

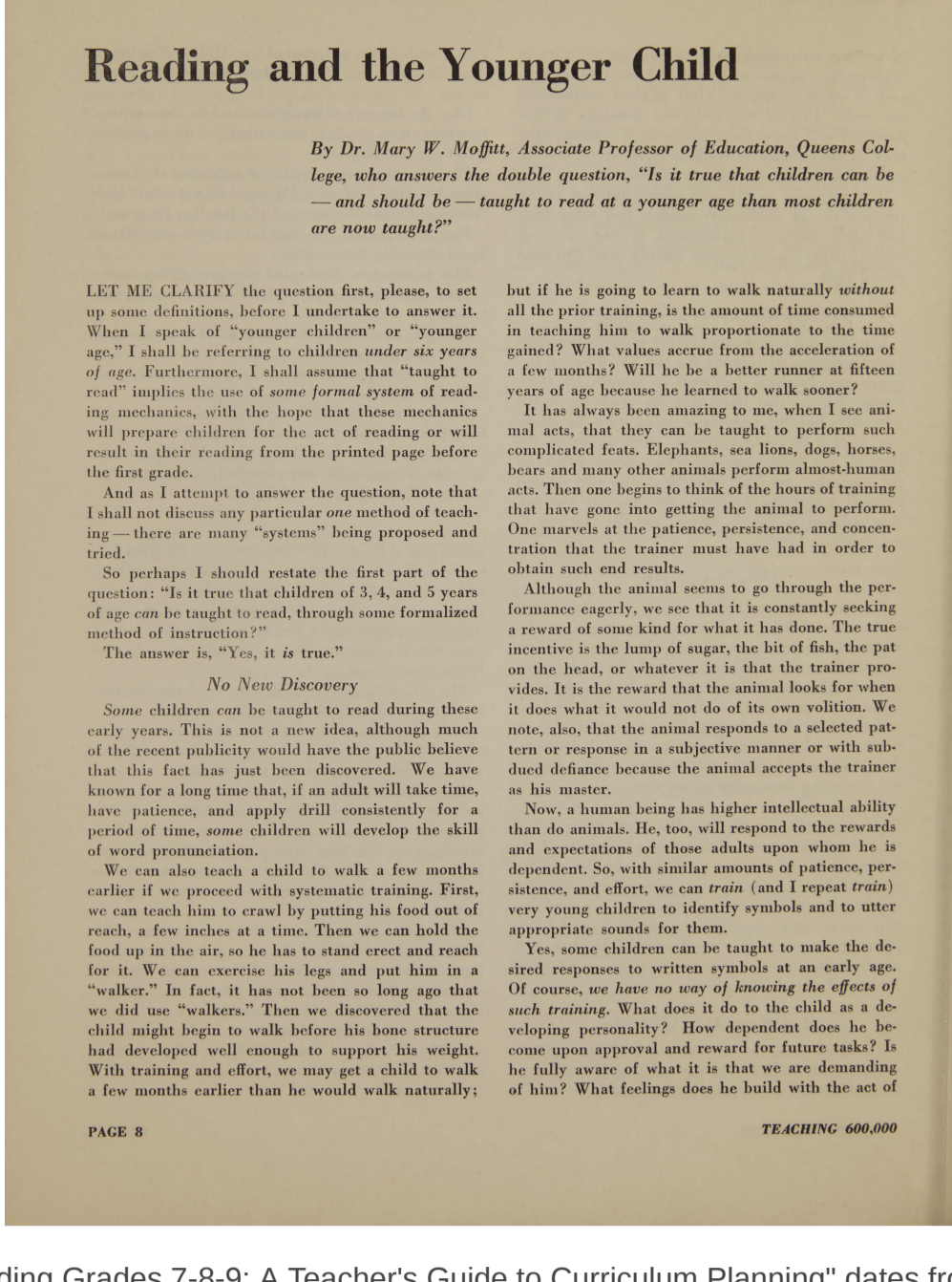
Municipal Library Notes - April 2022 SPOTLIGHT ON TEACHING READING IN SCHOOLS

Spotlight on: Teaching Reading in Schools

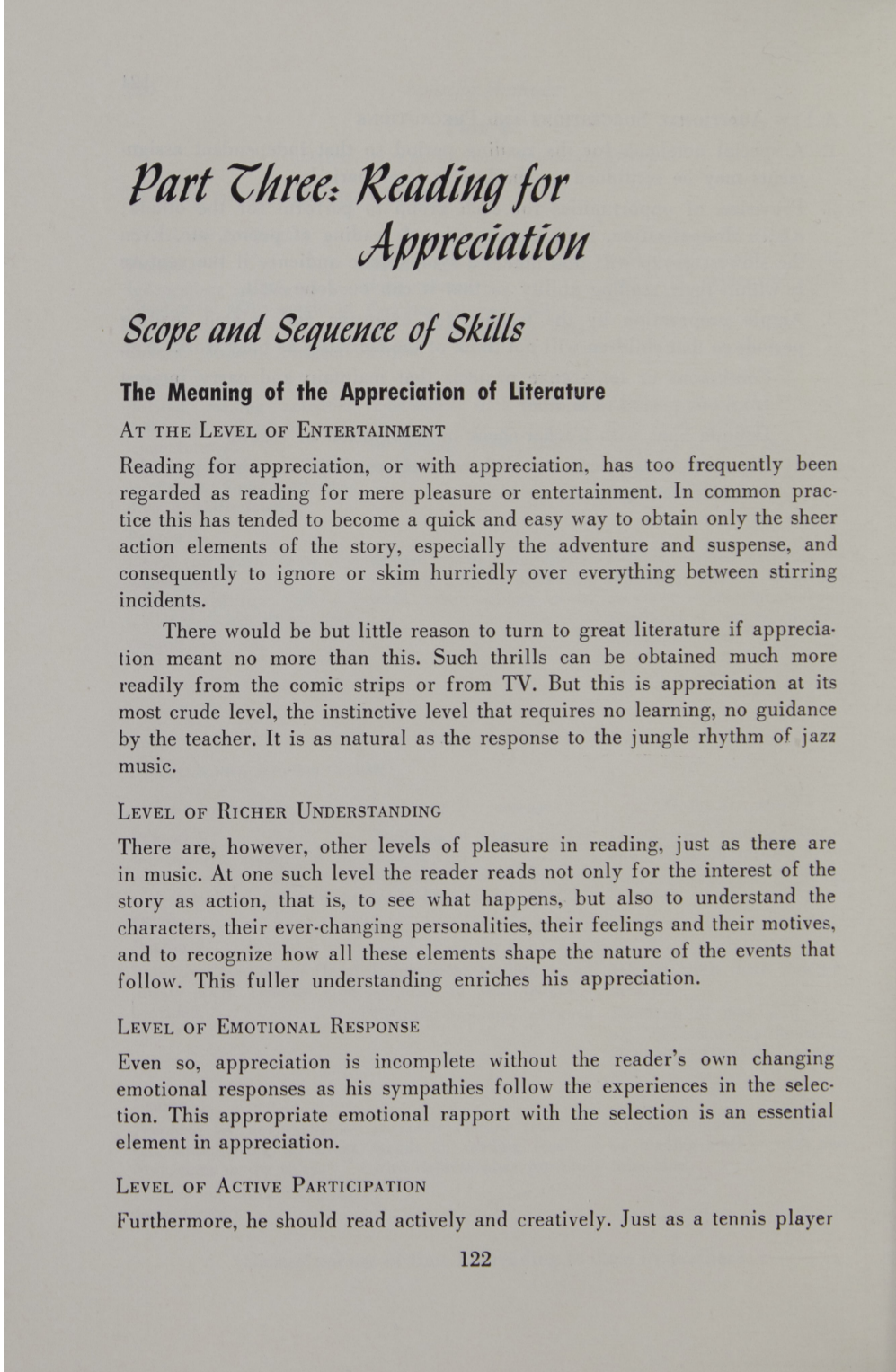
By Christine Bruzzese, Director, Municipal Library

Reading is one of the most important skills to learn and there are many approaches to teaching reading that have evolved over time. This article includes a few resources in the Municipal Library collection on teaching reading.

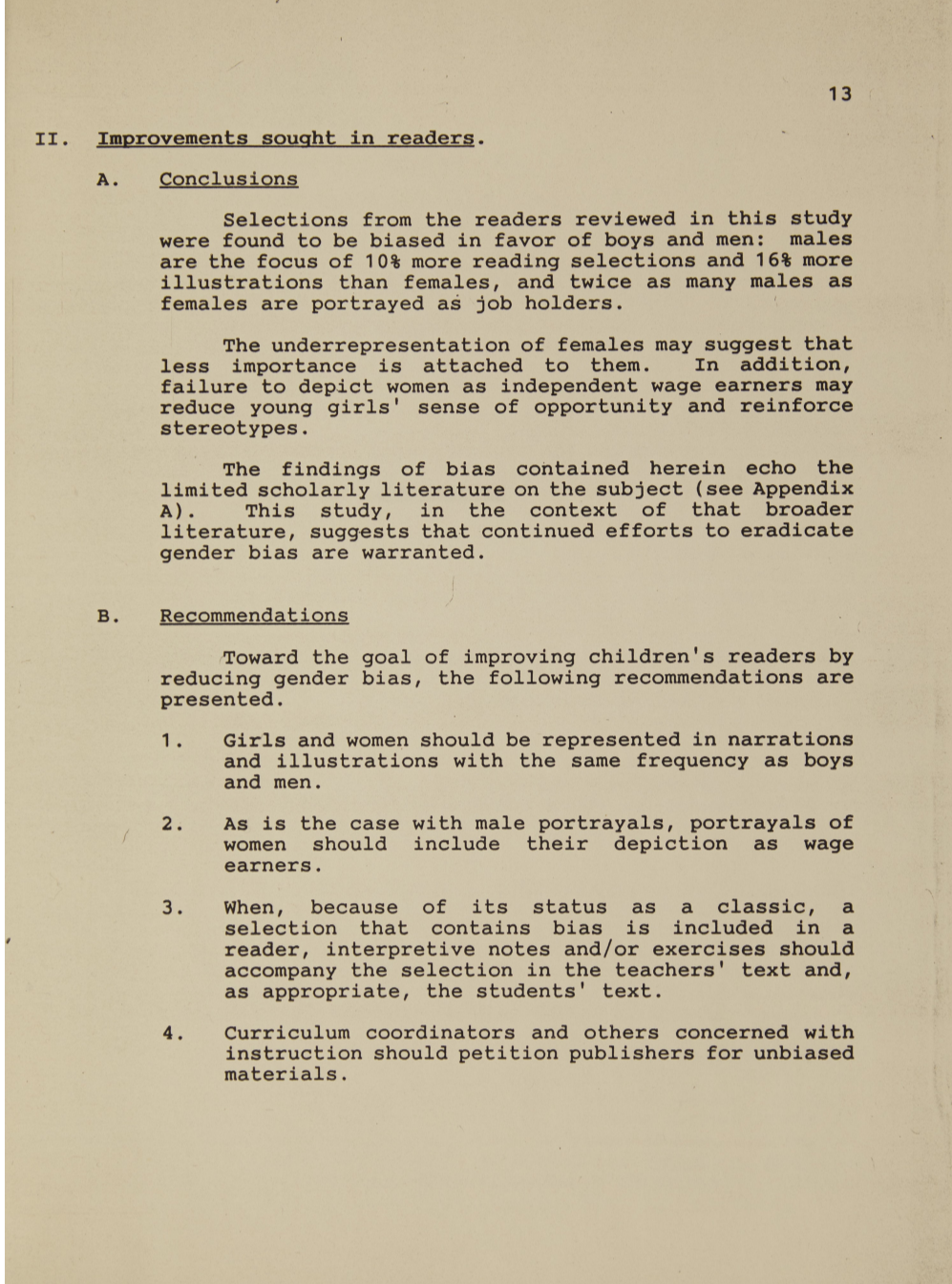
The report, "Teaching 600,000 'Johnnys' to Read" was published in 1962 by the Division of Elementary Schools at the New York City Board of Education. It summarizes the proceedings of the Reading Academy of the Division of Elementary Schools. Here is one page from an address "Reading and the Younger Child" by Dr. Mary W. Moffitt, Associate Professor of Education, Queens College.



"Reading Grades 7-8-9: A Teacher's Guide to Curriculum Planning" dates from 1958 and was reprinted in 1964. This guide focuses on how teachers can assist the more advanced students at intermediate and early high-school level to grow and develop their reading skills. Beyond school, they would need to be efficient and good readers in their adult lives. Pictured below is the introduction to teaching Reading for Appreciation.



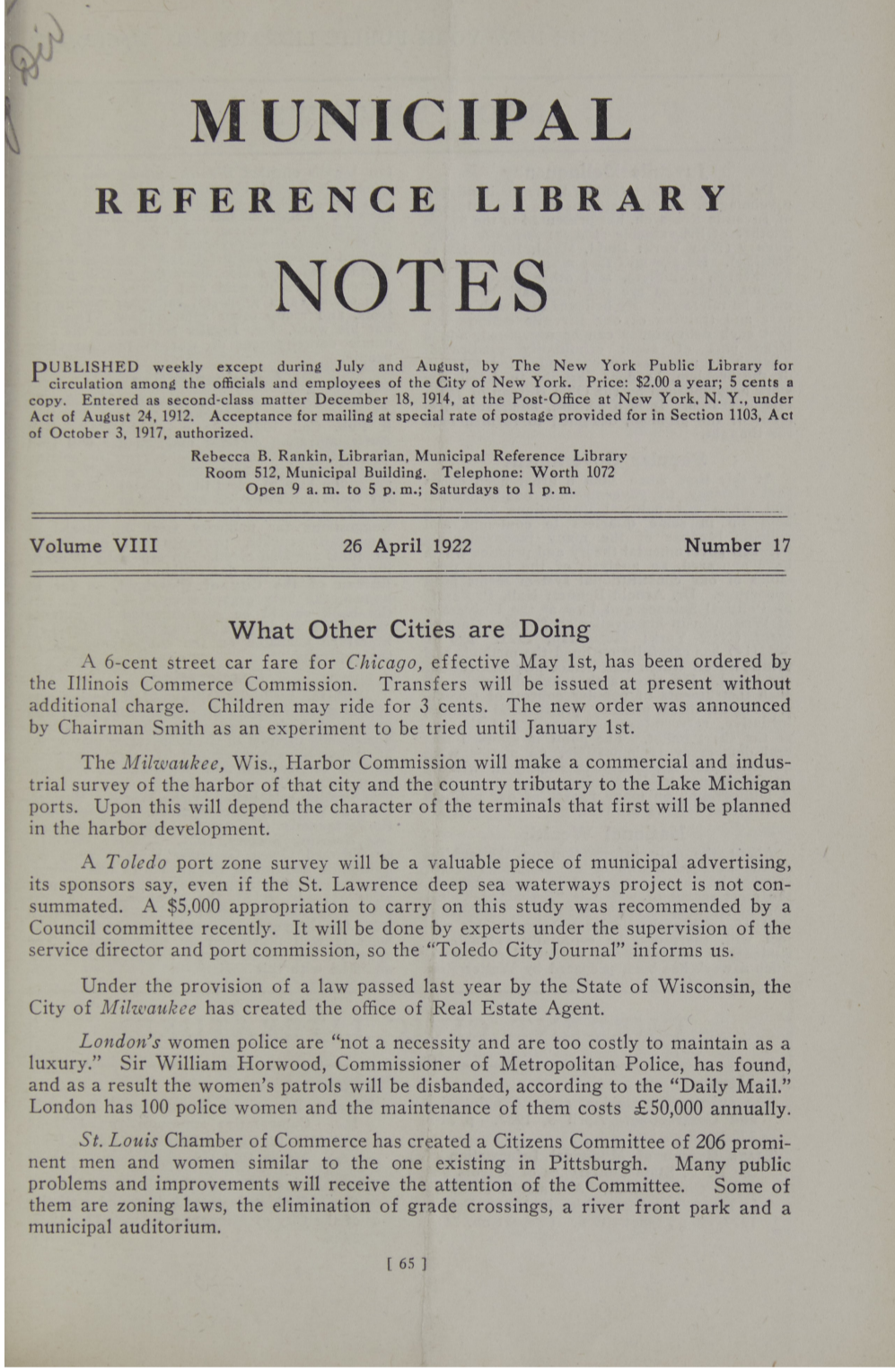
"Dick and Jane Revisited: A Study of Gender Bias in Children's Reading Materials" is a report published by the Comptroller's Office in 1991. Ten readers used in New York City schools were examined and it was found that men were more frequently and positively presented than women. Here is a summary of the conclusions and recommendations from the researchers.



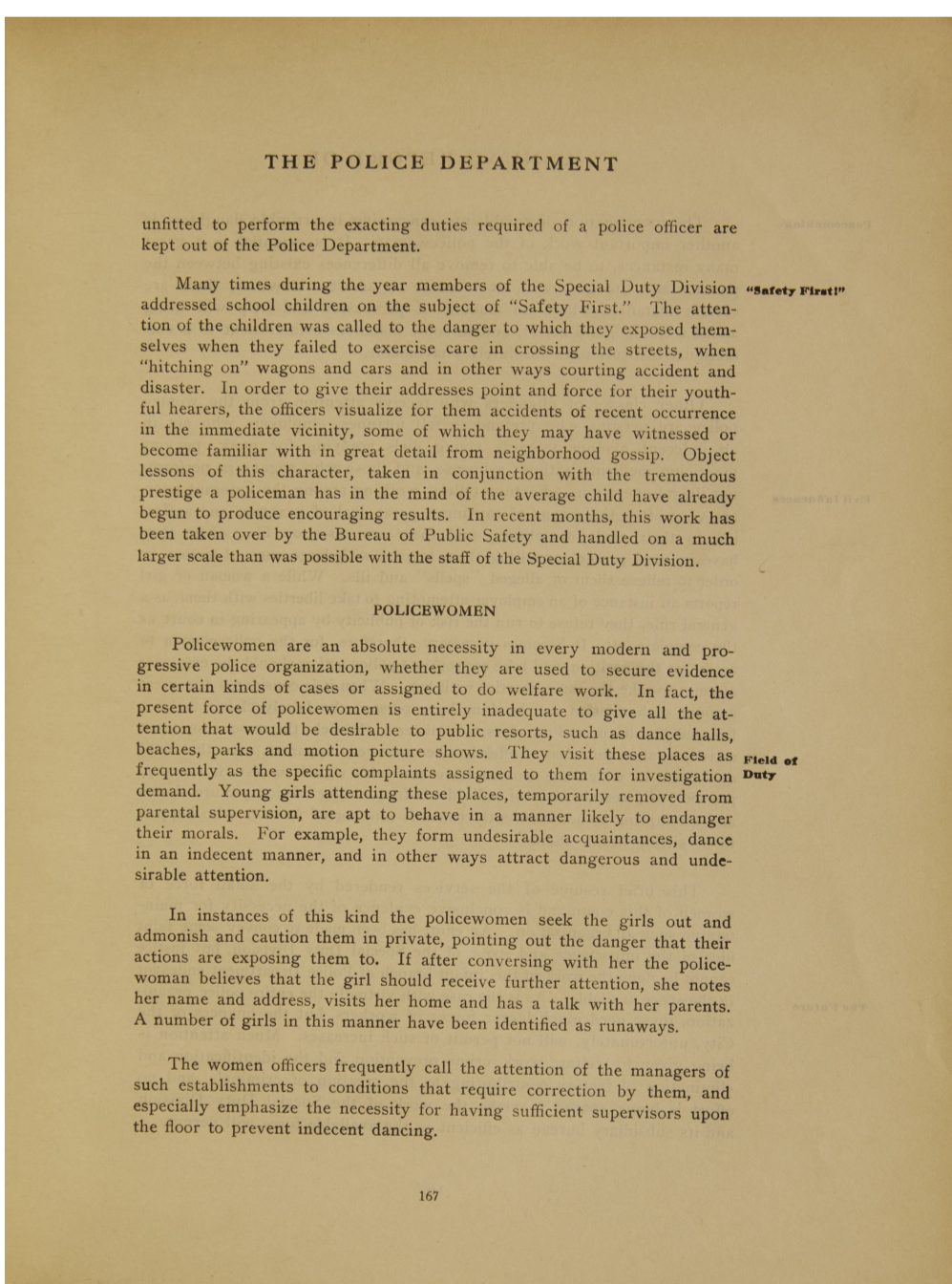
Municipal Library Notes April 1922 "What Other Cities are Doing" and the Role of Policewomen

By Christine Bruzzese, Director, Municipal Library

The Municipal Library Notes issue for April 26, 1922, included a periodic feature called "What Other Cities are Doing." News from London reveals that the Metropolitan Police Force was eliminating police jobs for women, believing these positions to be unnecessary and expensive. Below is the article from Municipal Library Notes.



In contrast, the New York City Police Department in its 1922 Annual Report, states that it is necessary to employ women on the force. Here is part of the description of their work.



Here are some statistics on the work of policewomen. Please note that "policewoman" or "policewomen" was the term used at the time.

THE POLICE DEPARTMENT		SUMMARY OF CASES INVESTIGATED BY THE POLICEWOMEN ATTACHED TO THIS BUREAU	
ARRAIGNED	1922	1921	
Complaints received	42	40	
Complaints forwarded	32	37	
Arrests	1	4	
Convictions	1	1	
Discharged	2	3	
Finings	4	-	
INCOGNITO CASES	1922	1921	
Complaints received	26	25	
Complaints forwarded	18	17	
Arrests	6	6	
Convictions	1	1	
Discharged	1	1	
Complaints in which Officer Work was done, by other members	278	210	
FORFEITING LICENSES	1922	1921	
Complaints received	68	57	
Complaints forwarded	39	44	
Arrests	15	15	
Convictions	11	11	
Discharged	3	3	
Finings	14	3	
FORFEITING LICENSES	1922	1921	
Complaints received	9	25	
Complaints forwarded	7	22	
Arrests	2	3	
Convictions	1	1	
Discharged	2	2	
Finings	11	-	
FORFEITING LICENSES	1922	1921	
Complaints received	11	44	
Complaints forwarded	9	15	
Arrests	1	1	
Convictions	1	1	
Discharged	4	6	
Finings	11	-	
MONITORING INVESTIGATIONS	1922	1921	
Investigation of non-traffic complaints, such as General Offenses, Disorderly conduct, in which witnesses were secured without making arrests	116	309	

Pop-up Exhibit

THE GREENSWARD PLAN

THE OLMSTED AND VAUX VISION FOR THE CENTRAL PARK

Celebrate Olmsted Bicentennial: The Greensward Plan for the Central Park

By External Affairs

In honor of famed landscape architect Frederick Law Olmsted's 200th birthday, the NYC Department of Records & Information Services will host a pop-up exhibit at 31 Chambers Street featuring the rarely seen original Greensward plan - the winning master plan submitted in 1856 by Olmsted and Calvert Vaux as part of the proposal for the Central Park design competition. The plan is considered a masterpiece of 19th century landscape architecture. Timed tickets for 30-minute slots on April 22nd, 11am - 7pm and April 23rd, 10am - 4pm are available.

Learn more and RSVP [here](#).

To learn more about upcoming events, please sign up for our [Events Mailing List](#).