

# **ATTACHMENT 5**

**Environmental Justice Informational Meeting PowerPoint Presentation Handout**

**City of New York Department of Sanitation  
(DSNY)  
Environmental Justice (EJ)  
Informational Meeting**

---



**Proposed Hamilton Avenue Converted Marine Transfer Station  
Pending State Permit Applications**

---

**April 12, 2007**

# Meeting Objectives

---

- Provide briefing on the proposed Hamilton Avenue Converted Marine Transfer Station (MTS).
- Explain the New York State Department of Environmental Conservation (NYSDEC or State) permit process.
- Explain how you can get comments to DSNY.
- Answer your questions.

# EJ Outreach Plan

---

- EJ Policy calls for a public participation plan (known as a PPP).
- NYSDEC has specifically approved the PPP for the MTS permit processes.
- This meeting is just one element of DSNY's approved PPP.
- DSNY is implementing the same outreach program in each of the four Converted MTS communities.

# DSNY Public Participation Plan

---

- Identifies organizations and individuals (called stakeholders) for outreach efforts.
- Describes written information on the proposed Converted MTS project, includes plans for non-English translations.
- Describes EJ informational meeting to be held to provide information on the project, the NYSDEC permits and the permitting process, includes plans for interpreters.
- Provides public locations where permit documents can be reviewed.
- Describes process to respond to comments from the community (question and answer session, comment period).

# **Solid Waste Management Plan (SWMP) Key Dates**

---

- Draft SWMP was issued in October 2004.
- October 2004 Draft Environmental Impact Statement (EIS) evaluated potential for significant adverse impact of Converted MTS Projects.
- April 2005 Final EIS responded to public comments and determined there were no potentially significant adverse impacts from construction or operation of the proposed Converted MTS Projects.

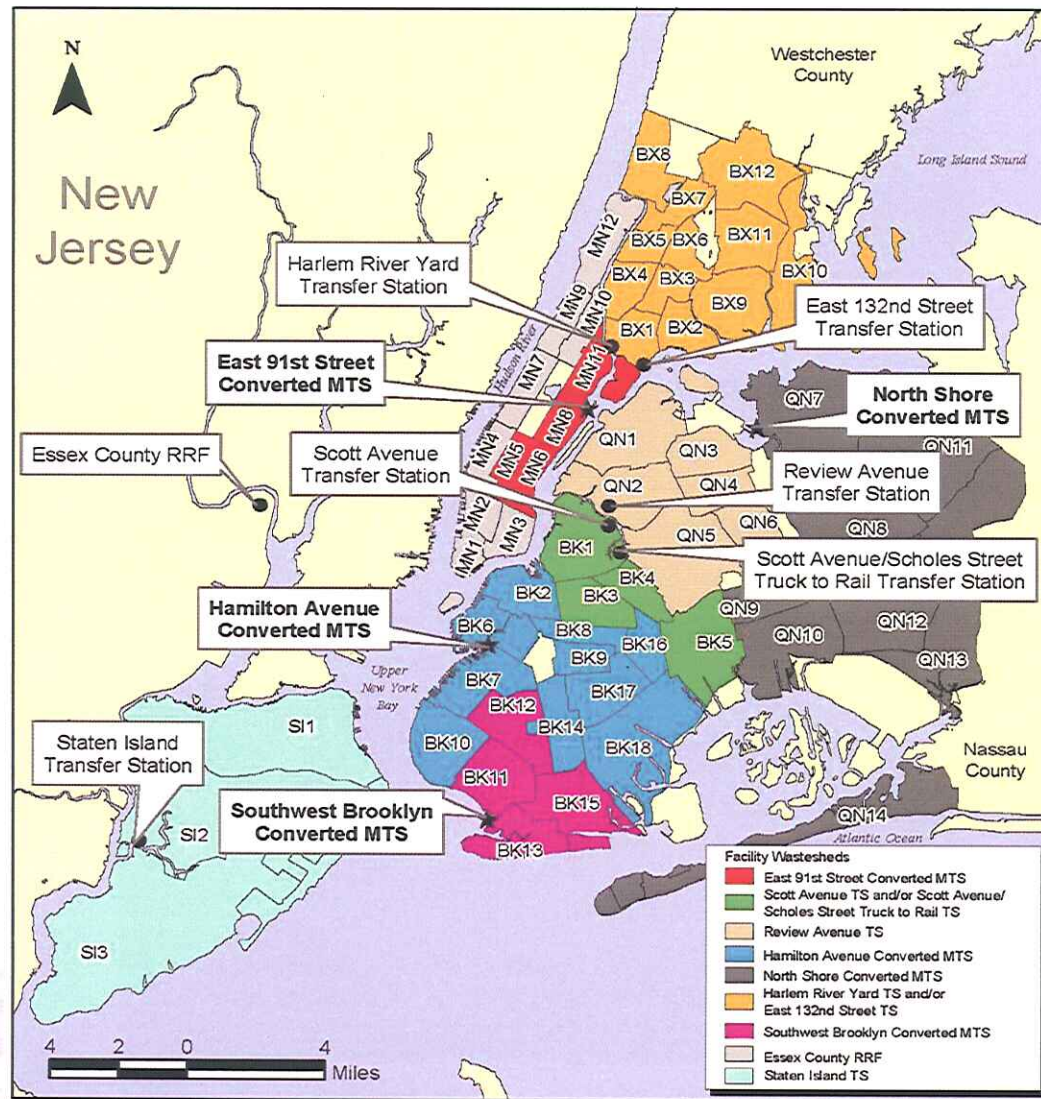
# **Solid Waste Management Plan**

## **Key Dates** (Continued)

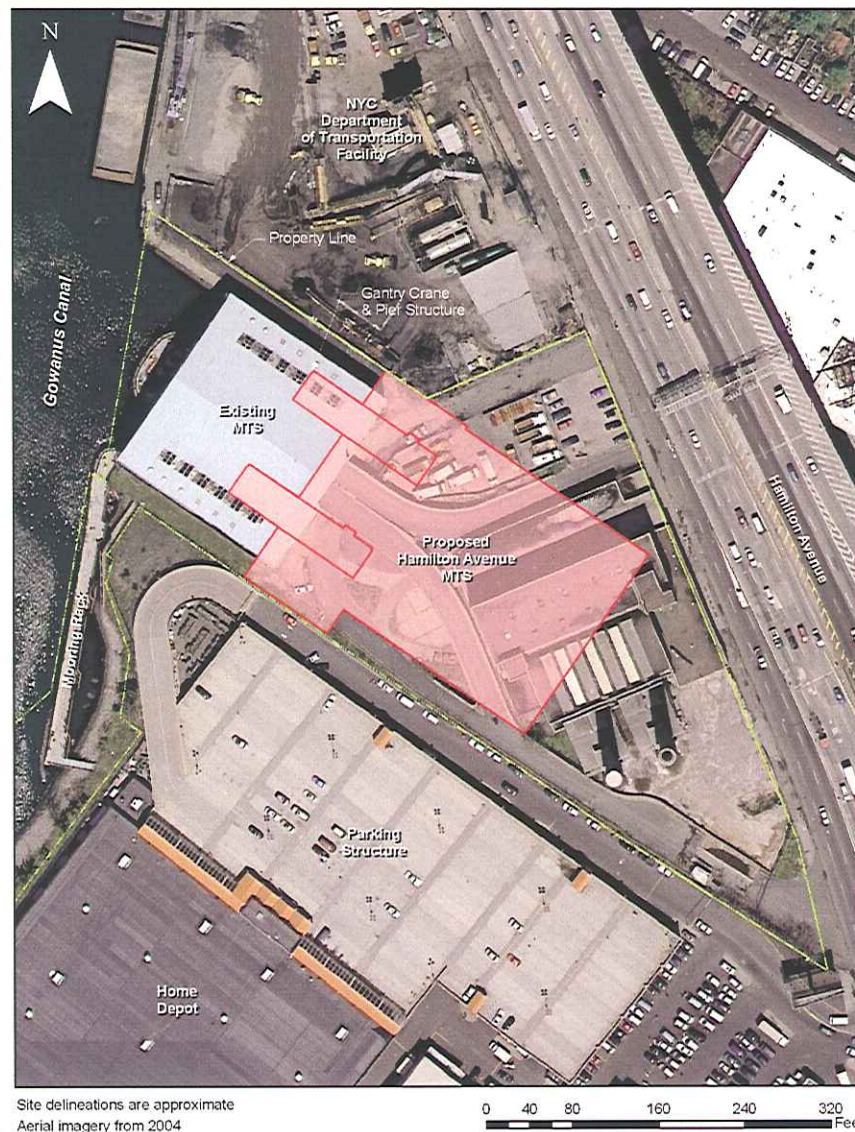
---

- After CB 7 yes vote and BP endorsement, City Planning Commission approved Hamilton Avenue Converted MTS Uniform Land Use Review Procedure siting action in April 2005.
- City Council adopted SWMP in July 2006.
- NYSDEC approved SWMP in October 2006.

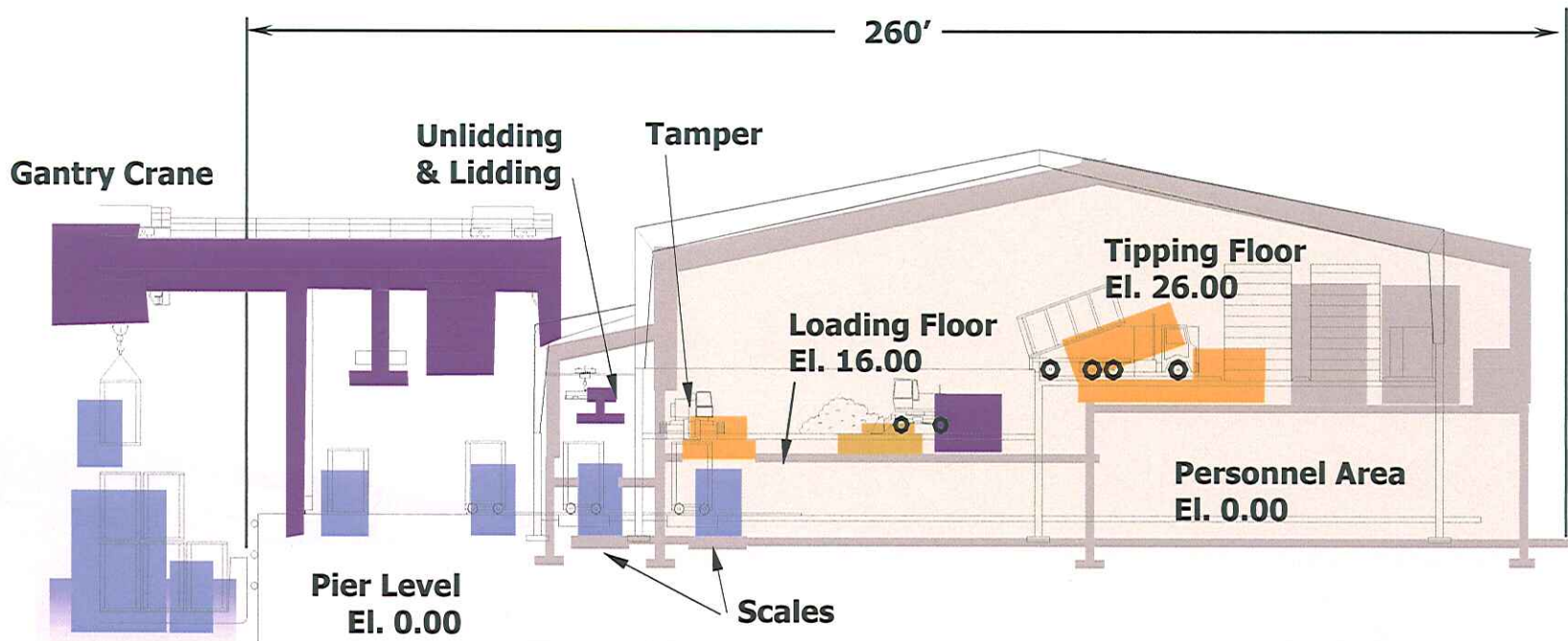
# DSNY- managed Waste: Long Term Export Facilities and Wastesheds



# Site Plan

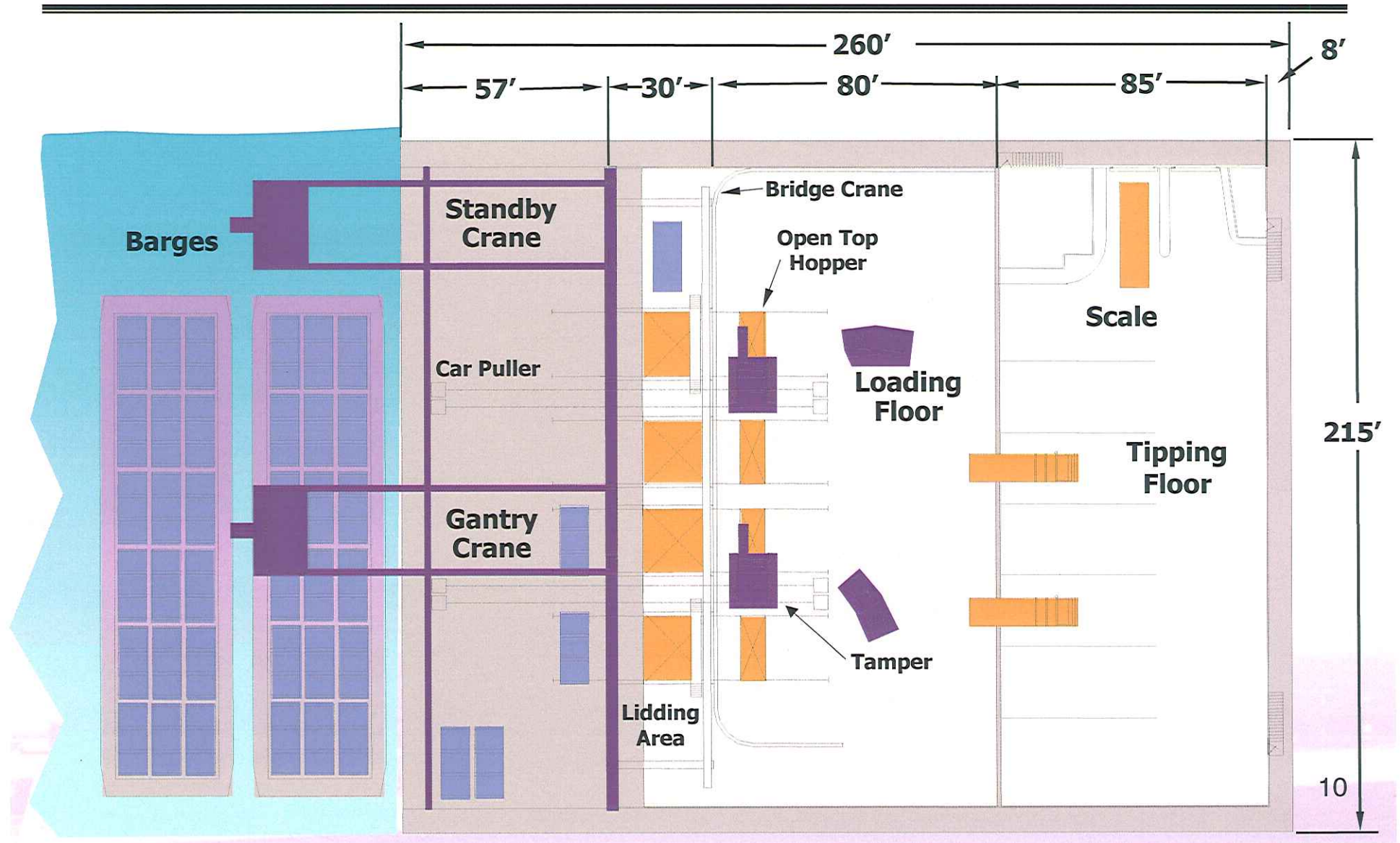


# Typical Proposed MTS Cross Section



All elevations are relative to Pier Level.

# Typical Proposed MTS Floor Plan



# Proposed Hamilton Avenue Converted MTS: Capacity

---

- Same historic wasteshed as existing MTS (1,900 average tons per day) from Brooklyn CDs 2, 6-10, 14, 16, 17 and 18.
- Expected average daily throughput is 1,900 tons of DSNY waste and up to 1,240 tons of commercial waste.
- Not-to-exceed permit limits are proposed on a Weekly and Maximum Peak Day basis.
- Proposed Weekly Limit is 21,120 tons.
- 20% allowance is included for seasonal variability, growth in waste generation and system redundancy.
- Proposed Maximum Peak Day Limit is 3,520 tons.
- Maximum Peak Day Limit addresses DSNY post-holiday collections.
- Old MTS operating permit allowed for 4,800 tons per day.

# Key Proposed MTS Features

---

- All waste processed in enclosed building that maintains negative air pressure to prevent escape of odors.
- Treatment system neutralizes (not masks) odor in building exhaust air.
- All waste leaves MTS in sealed, leak-proof containers.
- FEIS found no significant adverse impacts from MTS construction or operation.

# Acceptance of Commercial Waste

---

- To avoid noise impacts, Commercial Waste would be limited to 1,240 tons (113 trucks) over the 12-hour, 8:00 p.m. to 8:00 a.m. shift.



# Proposed MTS Permit Status

---

- DSNY has submitted Permit Applications to NYSDEC for:
  - Part 360, Solid Waste Facility Permit;
  - Part 608/681 Marine Permits (construction in public waters/protection of public waters) and Section 401 Water Quality Certification; and
  - Part 201 State Facility Air Permit (minor source).

# Proposed MTS Permit Status (Continued)

---

- The public is invited to review the Permit Applications at DSNY's website at <http://www.nyc.gov/html/dsny/html/reports/guides.shtml> , and at two public locations in your community:

<b>Brooklyn CB 7 Office</b> <b>Jeremy Laufer</b>	4201 4th Avenue, Brooklyn M-F 9 to 5; (718/854-0003)
<b>Sunset Park Library</b> <b>Roxanna Benavides</b> <b>(718/567-2806)</b>	5108 4 <sup>th</sup> Avenue, Brooklyn M 1-8; Tu/Th/F 1-6; Sa 10-5

# Part 360 Solid Waste Facility Permit

---

- Required to construct and operate the proposed MTS.
- The Engineering Report in the Permit Application defines the Permit requirements.
- The draft permit imposes conditions on construction and operation consistent with Part 360 regulations.

# Part 608/661 Marine Permits and Section 401 Water Quality Certification

---

## Required for:

- In-water construction to remove existing over-water access ramp and platform and bulkhead reconstruction; and
- Dredging proposed to be conducted using protective environmental method to enable barge transport operations.

# Part 201: State Facility Air Permit

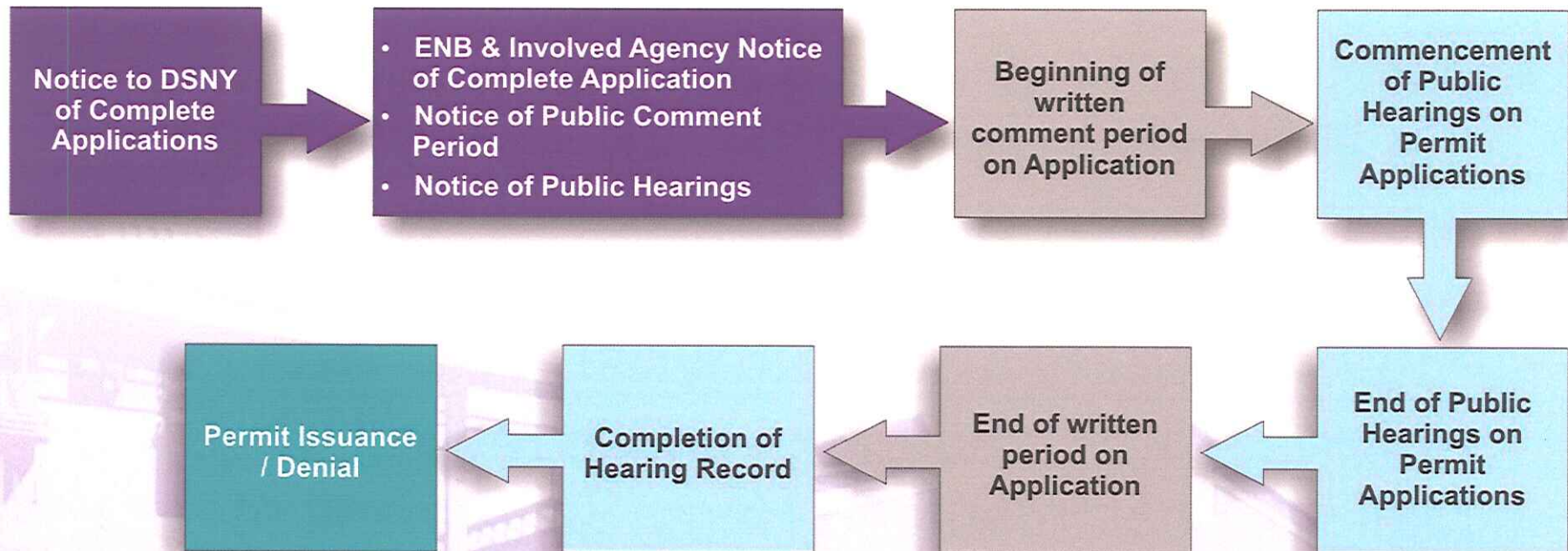
---

- This permit establishes the facility as a minor source of air emissions. Emissions result from equipment used at the proposed MTS.



# Flow Sheet on NYSDEC Permit Process

---



**For questions concerning the NYSDEC Permit Process please call Michelle Moore, NYSDEC Environmental Analyst, at (718) 482-4997**

# How Will My Comments at this EJ Meeting Be Addressed?

---

- Transcript of this meeting will be forwarded to NYSDEC for consideration.
- A response to all written comments received at the EJ meeting or by DSNY by April 30, 2007 will be part of the PPP certification record available on the DSNY web site at <http://www.nyc.gov/html/dsny/html/reports/guides.shtml> and in the public repositories. Mail your comments to Harry Szarpanski at DSNY, 44 Beaver Street, 12th Floor, NY, NY 10004 or fax your comments to 212 / 269 - 0788.

# Question and Answer Session

---

- Open the floor to discussion.



---

# BACKGROUND INFORMATION



# SWMP Long Term Export Goals

---

- End use of long-haul trucks for waste transport.
- Stabilize waste disposal costs.
- More fairly site waste transfer facilities among the City's boroughs.
- Containerize waste to achieve flexible transport and disposal options.