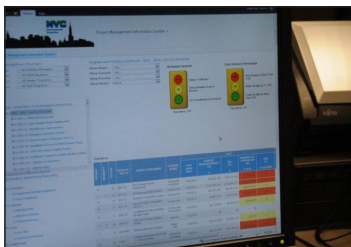


Your One Stop Shop for Project Information

With the largest capital construction program of any city agency, DEP is responsible for delivering dozens of critical projects on time and on budget. Many of these projects involve vital infrastructure upgrades and improvements that ensure DEP will be able to deliver clean, high quality drinking water to the city's eight million plus residents for decades to come. But with so many complicated projects simultaneously underway, it can often be difficult to effectively manage across multiple projects and ensure that the capital construction program is running smoothly and efficiently. In response to this challenge, the Bureau of Engineering Design, and Construction (BEDC) has developed a comprehensive database and project management system that centralizes information about all capital construction



projects in BEDC's portfolio (strategic plan initiative 63).

Known as the Project Management Information System, or PMIS for short, this tool provides extensive information about costs and performance schedules for more than 100 construction projects. According to **Kevin Donnelly**, BEDC's Assistant Commissioner of the Wastewater Program, "PMIS provides a single place to routinely review schedule and budget status on a large portfolio of proj-

(Continued on reverse side)

Spotlight on Safety

Protect Your Skin from the Summer Sun

Employees who work outside are more at risk to continued sun exposure, which over time can cause damaged skin to become cancerous. The risk of skin cancer increases with the amount of time spent without protection in the sun.

Symptoms of developing skin cancer include:

- Change in the size or color of a mole
- A sore that doesn't heal
- Any skin growth that increases in size

If you notice any of the symptoms listed above, see your doctor right away.

Here are some tips to consider when working outdoors in the sun:

- Wear lightweight, light-colored clothing and cover as much of the body as possible.
- Make sure your head is protected by a hat in the sun.
- Consider the use of sunscreens. If using sunscreens, choose one with a Sun Protection Factor (SPF) of at least 15 and one that is water-resistant, so that it can withstand sweat and humid conditions.

To read the complete article, please click [here](#).

Commissioner's Corner



This past weekend was touched by tragedy. On Saturday, a small plane carrying four people crashed after taking off from Westchester Airport. The crash occurred near Shaft 17 and the Kensico Reservoir, and all four passengers perished. DEP Police took a lead role in the recovery operation, securing the crash site and notifying the families, with assistance from the Armonk Fire Department, the North Castle Police Department, the Westchester Police Department, the American Red Cross, and the Federal Aviation Administration. The National Transportation Safety Board is investigating the cause of the crash—a terrible loss for those who died and everyone close to them. I want to acknowledge DEP Police Chief **Peter Fusco**, who served as incident commander, the officers from the Eastview Command, the Special Operations Division, and the Detective Unit for their sensitive handling of this tragic situation.

Over the past week, I have presented the Strategic Plan to staff at three BWSO water and sewer maintenance yards, in Brooklyn (North 15th), Manhattan (M-1) and Queens (3rd Ward). BWSO is responsible (among other things) for maintaining 14,000 miles of water and sewer mains, which support families and businesses in New York City's 950,000 buildings. BWSO is on call 24/7 responding to water and sewer-main breaks, sinkholes, open hydrants, and any other problem that comes up in the distribution network. As part of the Strategic Plan, we're focusing on using data about the system—like pipe age, material, and location—

to do preventive maintenance, and more sharply focus our resources. After the presentation, I opened the floor for questions and supervisor **Jorge Morales** along with construction laborer **Lillian Padilla** made some good points on how to increase efficiencies.

I also toured DEP's state-of-the-art Fleet Central Repair Shop, run by Fleet Director **Larry Marchesi**, in Long Island City. The 66 employees at the facility repair and perform preventive maintenance on agency vehicles, keeping our mobile units on the go at all times. On the tour I saw Fleet's computerized system that captures employee work hours and assignments in real time. For example, if an important job comes up, Fleet knows exactly what vehicle each mechanic is working on, and can easily shift resources to the most critical work. To see it in action, I randomly selected one employee's name, auto mechanic **Paul Hinds**, and the system directed us to where he was diligently working on one of BWSO's construction trucks.

Last Thursday, we announced the start of the major construction phase to upgrade the Gilboa Dam, which has been in service for more than 80 years. This project will rehabilitate and upgrade the dam to serve the water supply system for another 100 years. The Gilboa rehabilitation is the most significant dam reconstruction project under way in the city's water supply system, and is being overseen by **Sean McAndrew**, **Paul Costa**, and **Emory Chase** in BEDC. So far the project is on time and under budget—let's keep it that way!

At DEP, everyone is responsible for safety. If you or anyone on your team is concerned about your working conditions, it's okay to ask your supervisor or your bureau's EHS liaison how they can help. If you've still got questions, you can call the EHS Employee Concerns Hotline. It's DEP's responsibility to acknowledge and fix unsafe situations, procedures, and practices. With your help, we'll not only get the job done, we'll make it safer for ourselves, our coworkers, our families, and our city.

CALL (800) 897-9677 OR SEND A MESSAGE THROUGH PIPELINE. HELP IS ON THE WAY.

Focus on the Field



In January 2010, Deputy Commissioner Kathryn Mallon of the Bureau of Engineering, Design and Construction (BEDC) was looking for an IT Project Manager to develop the Project Management Information System (PMIS)—a tool to help manage scope, schedule and budget for capital projects. **Steve Levinsky**, with the Office of Information Technology (OIT), came on board as Section Chief for PMIS Support to help move this assignment to successful completion.

In order to ensure project and support continuity, Steve transferred to BEDC to work on implementing the new program full time. "I've spent much of my career doing IT project management and development but this project has given me the chance to grow professionally, to see project management from a different perspective,

and to develop skills which I otherwise wouldn't have the opportunity to utilize," said Steve.

With the reward comes the challenge. Steve is at his desk by 5:45 am reviewing schedules, action items, emails, and both the PMIS production and development systems. Steve provides classroom training for PMIS users, which he finds to be a great opportunity to exchange ideas and gain insight and connect with each of his users. The most interesting part of his job "is meeting the people who utilize the system and get their take on how the system should grow. Getting validation and feedback from my users makes it real, makes it tangible to me," said Steve.

Steve has been at DEP for almost 23 years. He holds a bachelor's of business administration from Hofstra University, a master's in environmental and waste management from SUNY at Stony Brook and is certified as a Project Management Professional. In his spare time Steve says he "enjoys spending time with family, teaching his kids things which could help them succeed in whatever they aspire to and relaxing with music, books, movies, photography and enjoying the outdoors."

Event Calendar

Visitor Center at Newtown Creek Summer Speaker Series – Thursday, June 23; 6:30-8:30 pm; Past, Present, and the Future: Newtown Creek. For more information please click here [🔗](#).

Kudos Corner



A-TRUE WINNER: **Bharat Gami**, RA, AIA, a Department of Buildings (DOB) employee in BEC's Asbestos Technical Review Unit (A-TRU), received a Commissioner's Award for Excellence on June 2, from DOB Commissioner **Robert LiMandri**. A-TRU is a joint DOB/DEP unit.

Kodak Moment



STRATEGICALLY SPEAKING: Commissioner Holloway presents the Strategic Plan to the DEP Police on June 8 at the Eastview Precinct. In addition to the 50 members of the Bureau of Police and Security in attendance, there were three teleconferencing monitors set up in Grahamsville, Ashokan and Lefrak.

(Your One Stop Shop for Project Information... continued)

ects." PMIS provides a centralized repository where managers can go for information about the overall status of the construction program: how many projects are delayed, how many are on time or ahead of schedule, how many projects are over or under budget and by what percent, and the responsible staff members for each project.

Before PMIS was developed, project status information was decentralized and spread out across BEDC's project managers. Recognizing the potential for better information sharing, increased efficiencies, and significant cost savings, BEDC's Deputy Commissioner **Kathryn Mallon** began to design a PMIS system that would provide the resources and tools necessary to make DEP a more cost and schedule driven agency. With the help of CH2M Hill, a global construction consulting firm, Phase 1 of the PMIS system was turned on in March 2011, providing managers with an invaluable reporting tool for tracking cost and scheduling data.

Now that the first phase of PMIS has been successfully executed,

BEDC is planning to roll out additional phases and features over the next couple of years. Each phase will further expand and enhance the system's capabilities; first by creating a more dynamic environment where budget data and workflows are created in real time and later by transforming the PMIS system into a comprehensive work tool that BEDC staff will use for all aspects of the project design and construction process, mirroring the management systems of many private construction firms.

Thanks to their new PMIS system, BEDC will now be able to manage projects in a way that wasn't possible just a few months ago. With cost and schedule information easily available, and transparent access to a range of data and program-wide trends, managers will be able to make better decisions and get better results. For DEP, that means a capital construction program that is more cost effective, more efficient, and better able to deliver the many improvements necessary to ensure the vitality of New York's water and wastewater infrastructure.

OFFICE OF VETERANS AFFAIRS – SUIT DRIVE

DEP will be participating in the "Suit Drive for Veterans" that the Mayor's Office of Veteran Affairs is launching, which will run from July 5 through July 22. Please click here [🔗](#) for further details on collection times and locations.

We welcome your feedback! To submit an announcement or suggestion, please email us at:
newsletter@dep.nyc.gov [🔗](#)