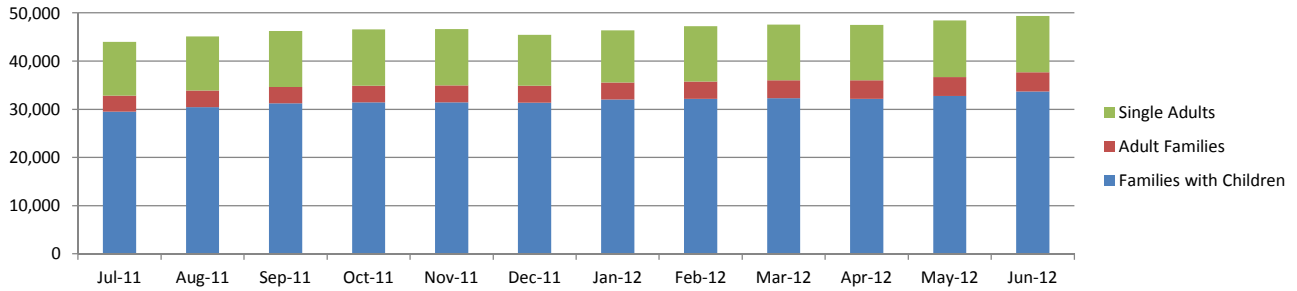


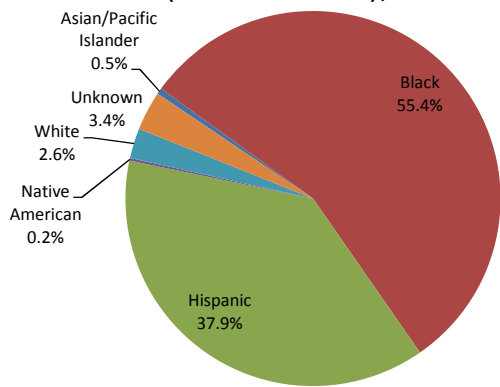
# DHS DATA DASHBOARD - FISCAL YEAR 2012

## Population

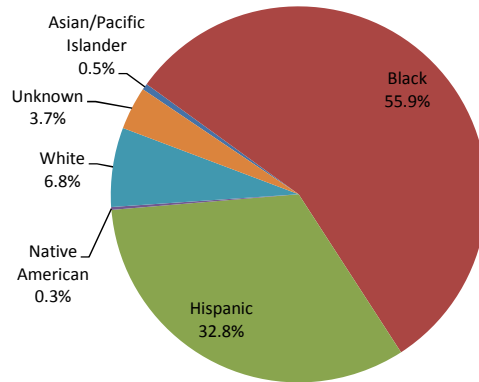
### Individuals in Shelter by Case Type, FY 2012



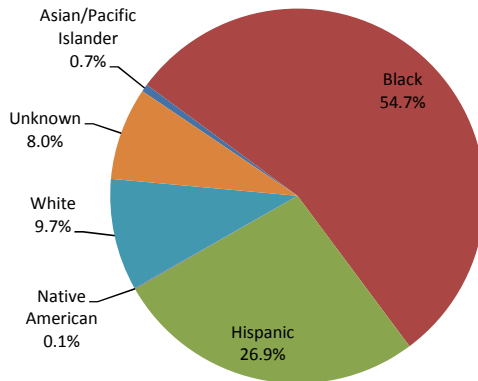
### Race/Ethnicity of Families with Children in Shelter (Heads of Households), FY2012



### Race/Ethnicity of Adult Families in Shelter (Heads of Households), FY2012



### Race/Ethnicity of Single Adults in Shelter, FY2012

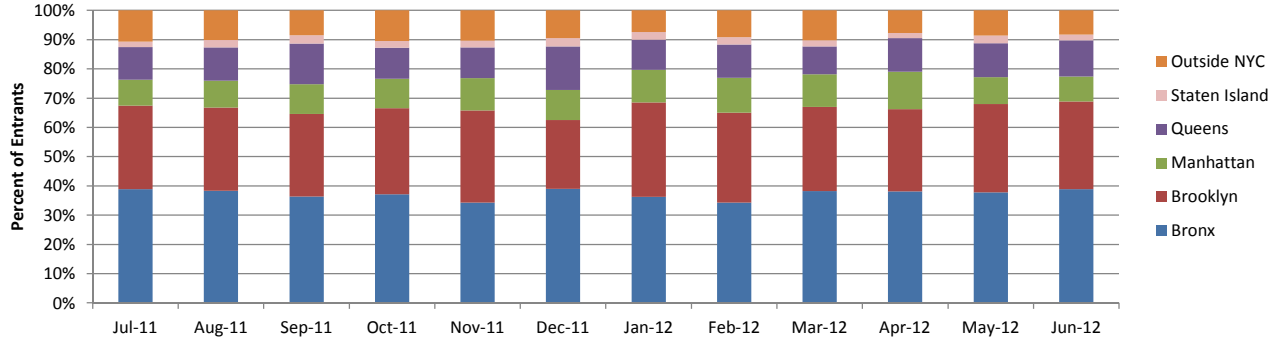


\*Due to data conversion the data for December 2011 and January 2012 is based upon unreconciled data.

# DHS DATA DASHBOARD - FISCAL YEAR 2012

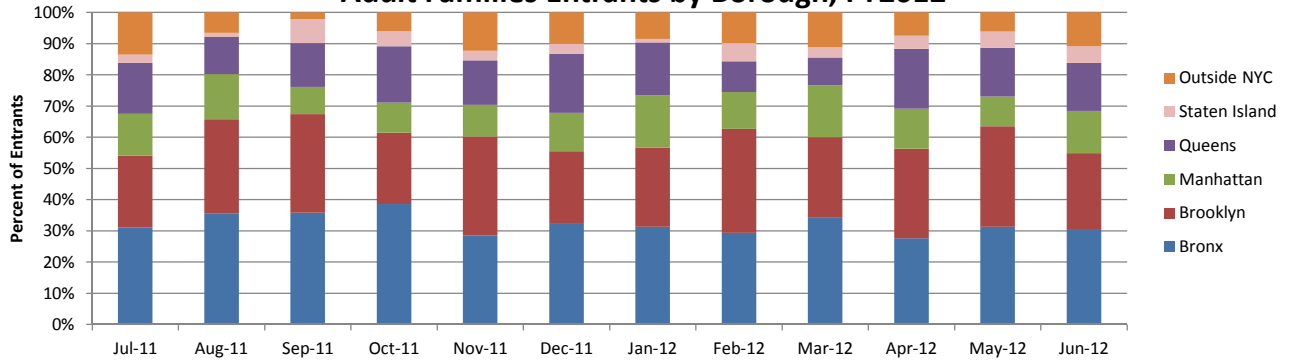
## Intake

### Families with Children Entrants by Borough, FY2012



\*Due to data conversion the data for December 2011 and January 2012 is based upon unreconciled data.

### Adult Families Entrants by Borough, FY2012

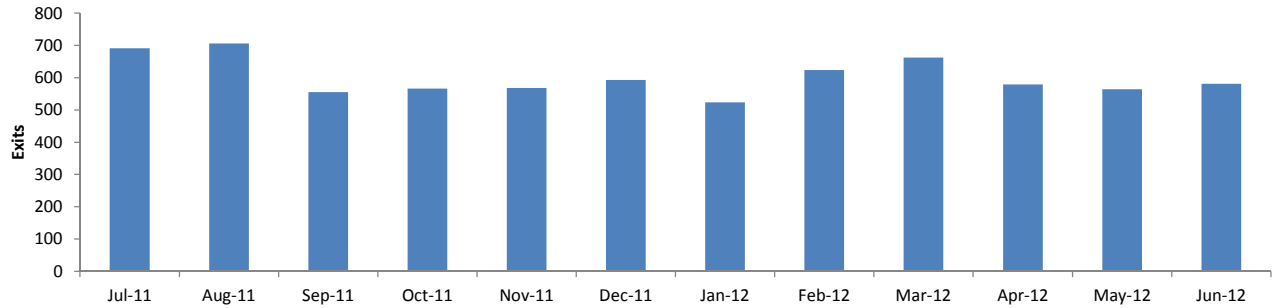


\*Due to data conversion the data for December 2011 and January 2012 is based upon unreconciled data.

# DHS DATA DASHBOARD - FISCAL YEAR 2012

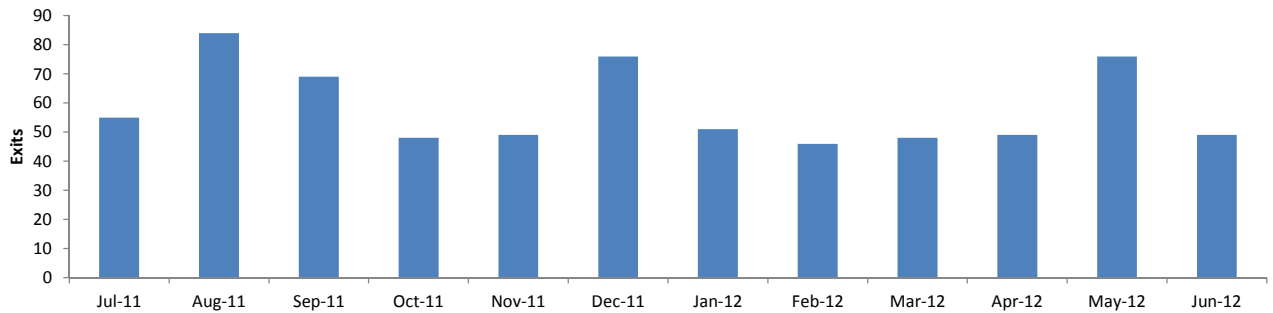
## Shelter Exits

### Families with Children Shelter Exits, FY2012



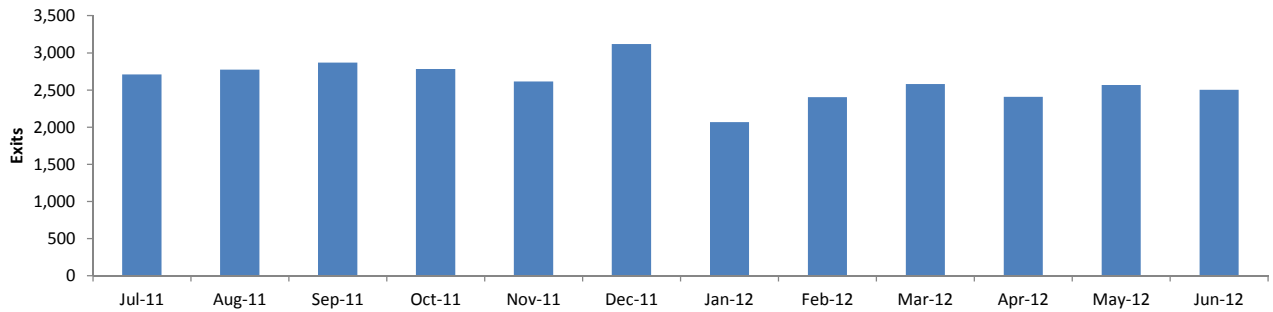
\*Due to data conversion the data for December 2011 and January 2012 is based upon unreconciled data.

### Adult Families Shelter Exits, FY2012



\*Due to data conversion the data for December 2011 and January 2012 is based upon unreconciled data.

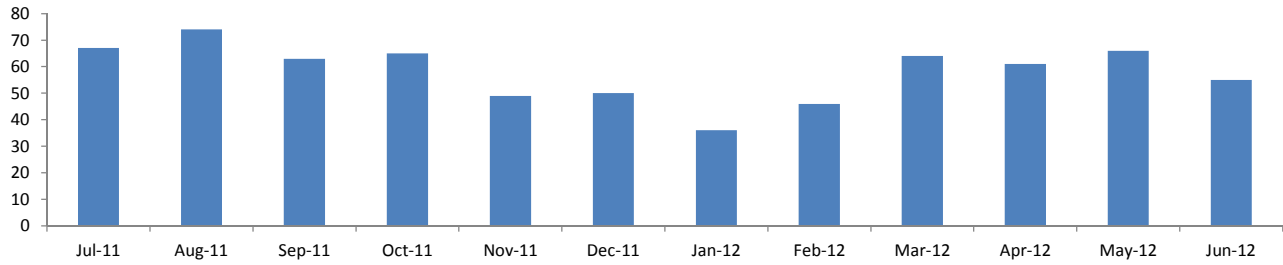
### Single Adult Shelter Exits, FY2012



\*Due to data conversion the data for December 2011 and January 2012 is based upon unreconciled data.

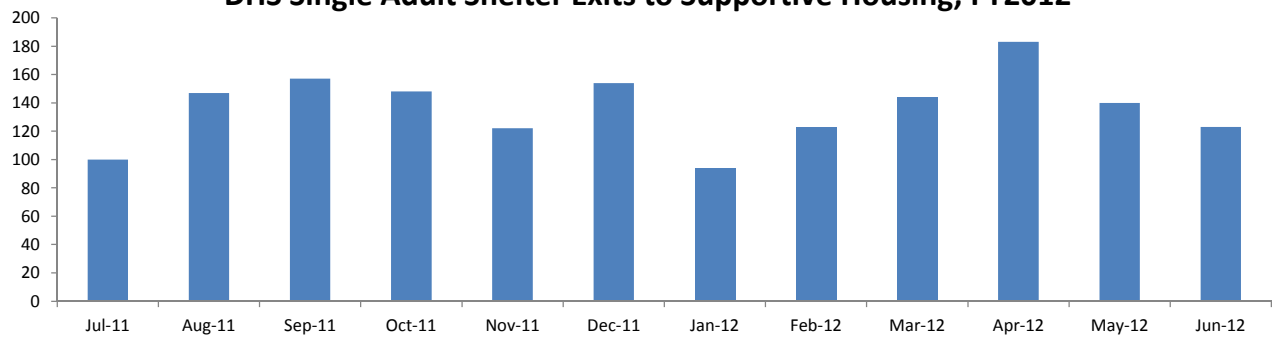
## DHS DATA DASHBOARD - FISCAL YEAR 2012

### DHS Single Adult Veteran Shelter Exits to Permanent Housing, FY2012



\*Due to data conversion the data for December 2011 and January 2012 is based upon unreconciled data.

### DHS Single Adult Shelter Exits to Supportive Housing, FY2012

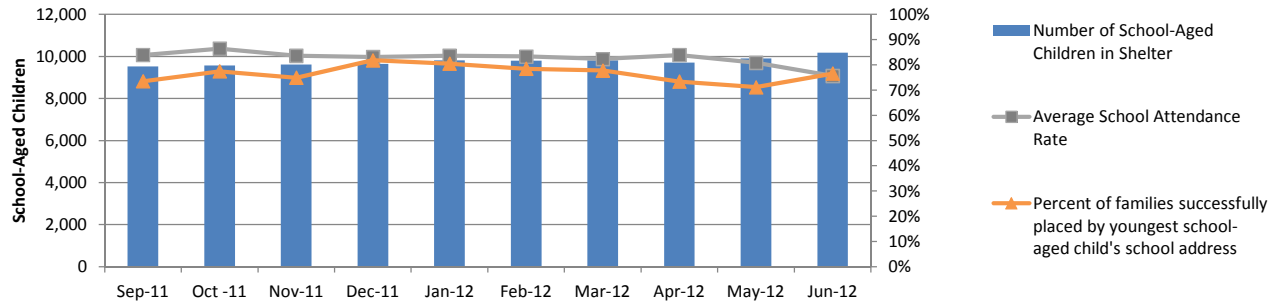


\*Due to data conversion the data for December 2011 and January 2012 is based upon unreconciled data.

# DHS DATA DASHBOARD - FISCAL YEAR 2012

## Schools

### School-Aged Children in Shelter, FY2012

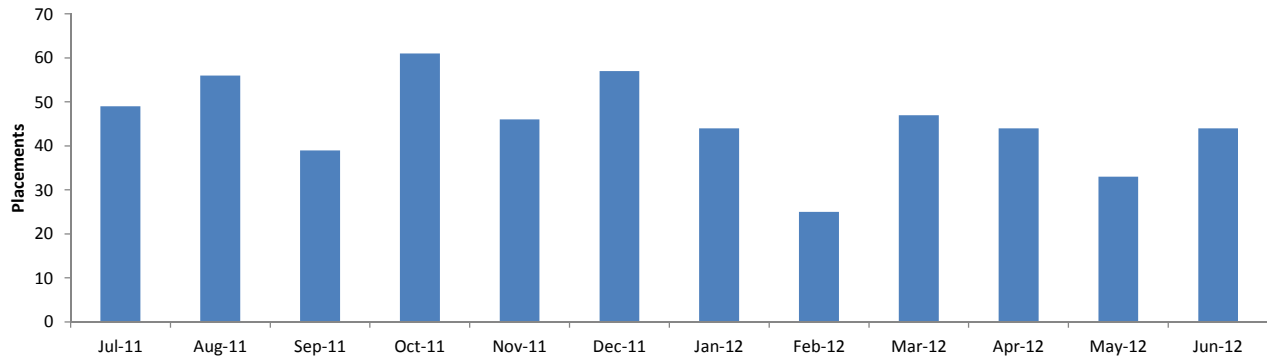


\*Due to data conversion the data for December 2011 and January 2012 is based upon unreconciled data.

# DHS DATA DASHBOARD - FISCAL YEAR 2012

## Outreach and Unsheltered Population

### Placements of Chronically Street Homeless Individuals, FY2012

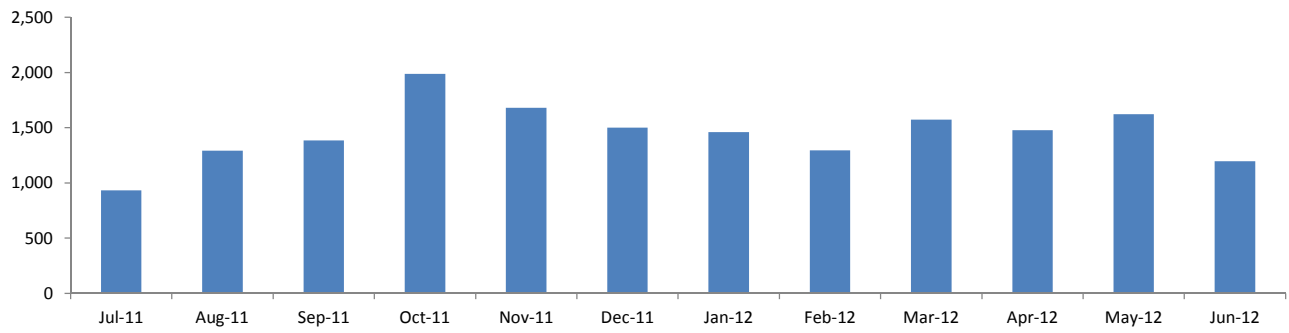


\*Due to data conversion the data for December 2011 and January 2012 is based upon unreconciled data.

# DHS DATA DASHBOARD - FISCAL YEAR 2012

## Prevention

### Total Citywide Prevention Enrollments, FY2012



\*Due to data conversion the data for December 2011 and January 2012 is based upon unreconciled data.