

# Barclays Center On-Street Parking Impact Study

New York City Department of  
Transportation

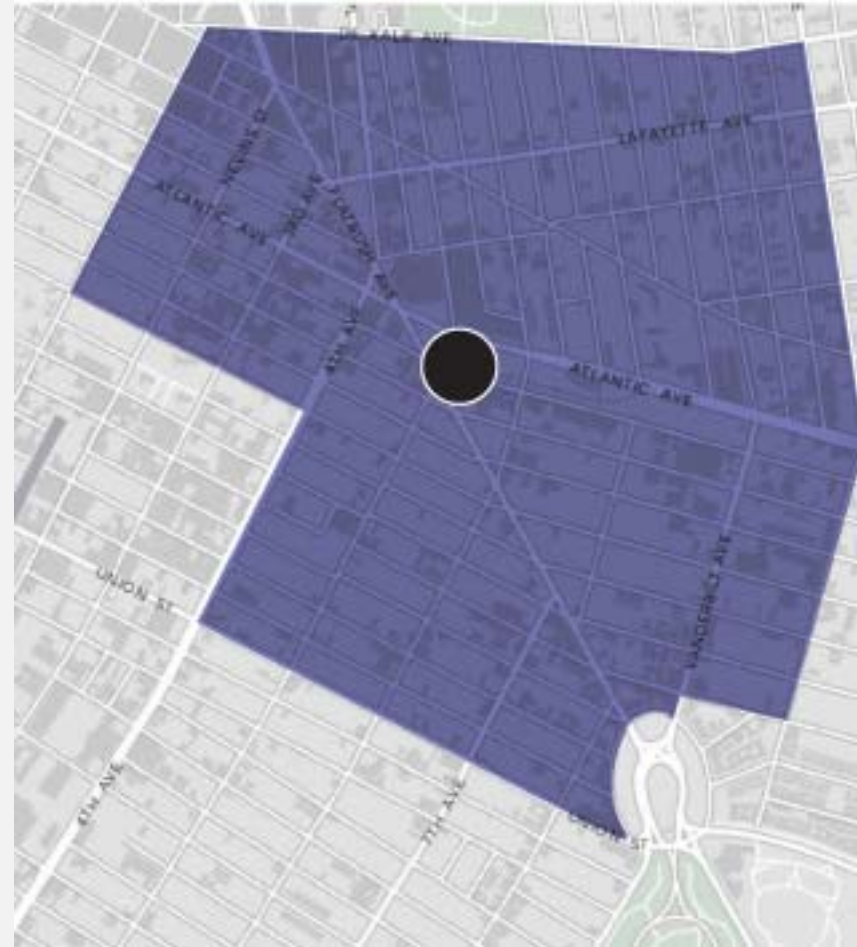
September 26, 2013

# Study Purpose

- To determine the extent and nature of parking demand induced by event-goers to the Barclays Center
- A follow up to a 2011 on-street parking data collection that examined parking conditions around the arena site

# Study Area

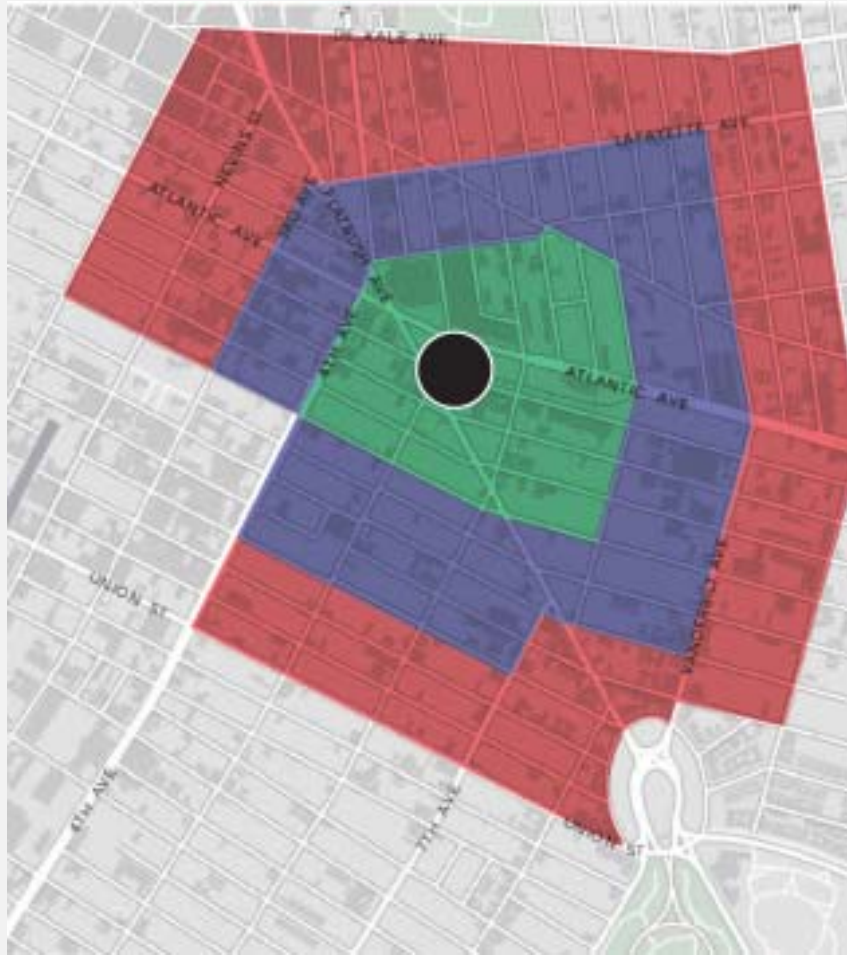
- Areas in Brooklyn roughly ½ mile from Barclays Center
  - Bounded by Dekalb, Vanderbilt, Union, and 3<sup>rd</sup> Avenue
  - Includes parts of Boerum Hill, Clinton Hill, Ft. Greene, Park Slope, and Prospect Heights
  - Over 9,000 total parking spaces






# Study Methods

- Time-lapse camera data collection (17 locations):
  - Parking occupancy: a measure of the percentage of spaces occupied on any given block
  - Turnover: a measure of how long, on average, a vehicle spends parked
- License Plate Readers (390 blockfaces):
  - Determines if parked vehicles are registered locally
- Data collected From April 6<sup>th</sup>-13<sup>th</sup>, 2014

# Data Collection Locations



-  Close Zone (4 locations)
-  Intermediate Zone (5 locations)
-  Far Zone (8 locations)



# Sample Time-Lapse Images

*Atlantic Avenue – 4/6/2013 10:14am*

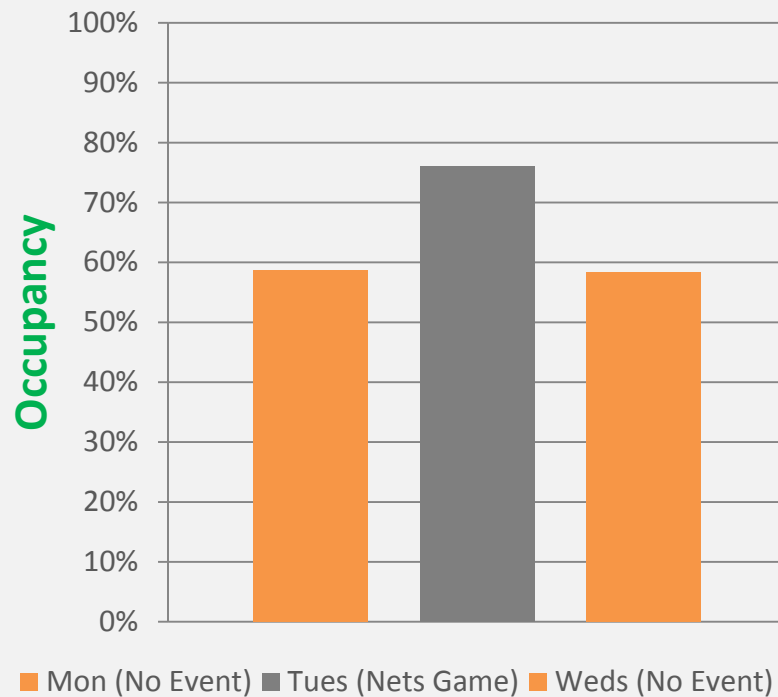


*Carlton Avenue 4/6/2013 7:44am*

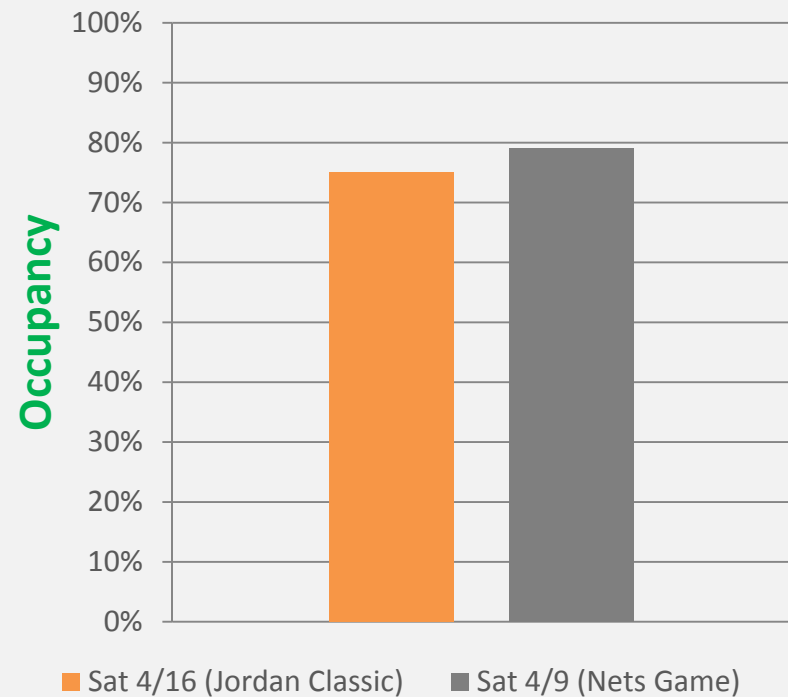
# Study Findings

Parking occupancy rose during arena events:

## Weekdays

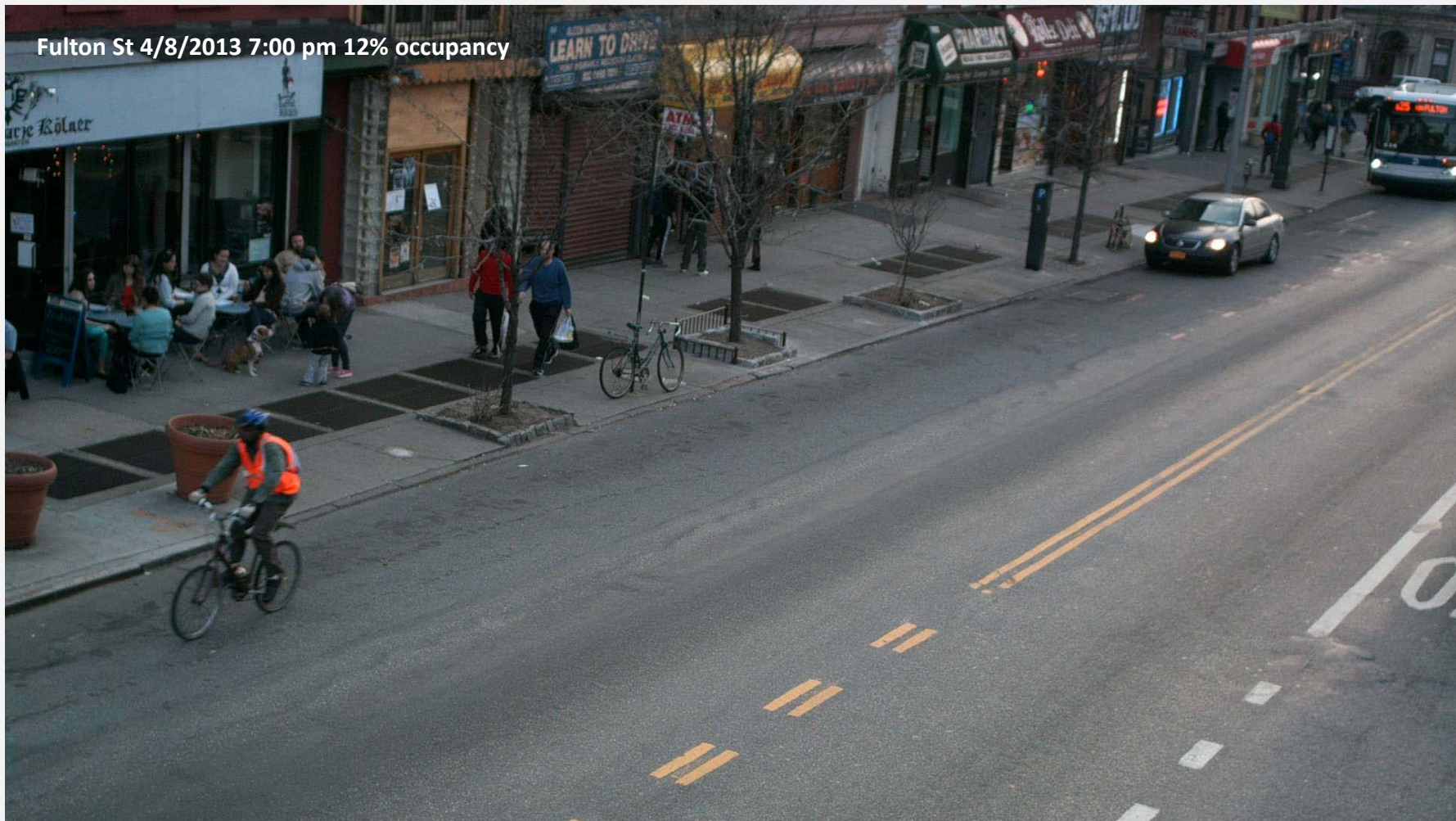


## Weekends





# Timelapse: Fulton Street



September 26, 2013 | Community Initiatives | Traffic and Planning  
Commissioner Janette Sadik-Khan New York City Department of Transportation





# Timelapse: Fulton Street

*Fulton Street – 4/9/2013 7:00pm 100% Occupancy*



September 26, 2013 | Community Initiatives | Traffic and Planning  
Commissioner Janette Sadik-Khan New York City Department of Transportation





# Timelapse: Fulton Street





# Event Day Parking

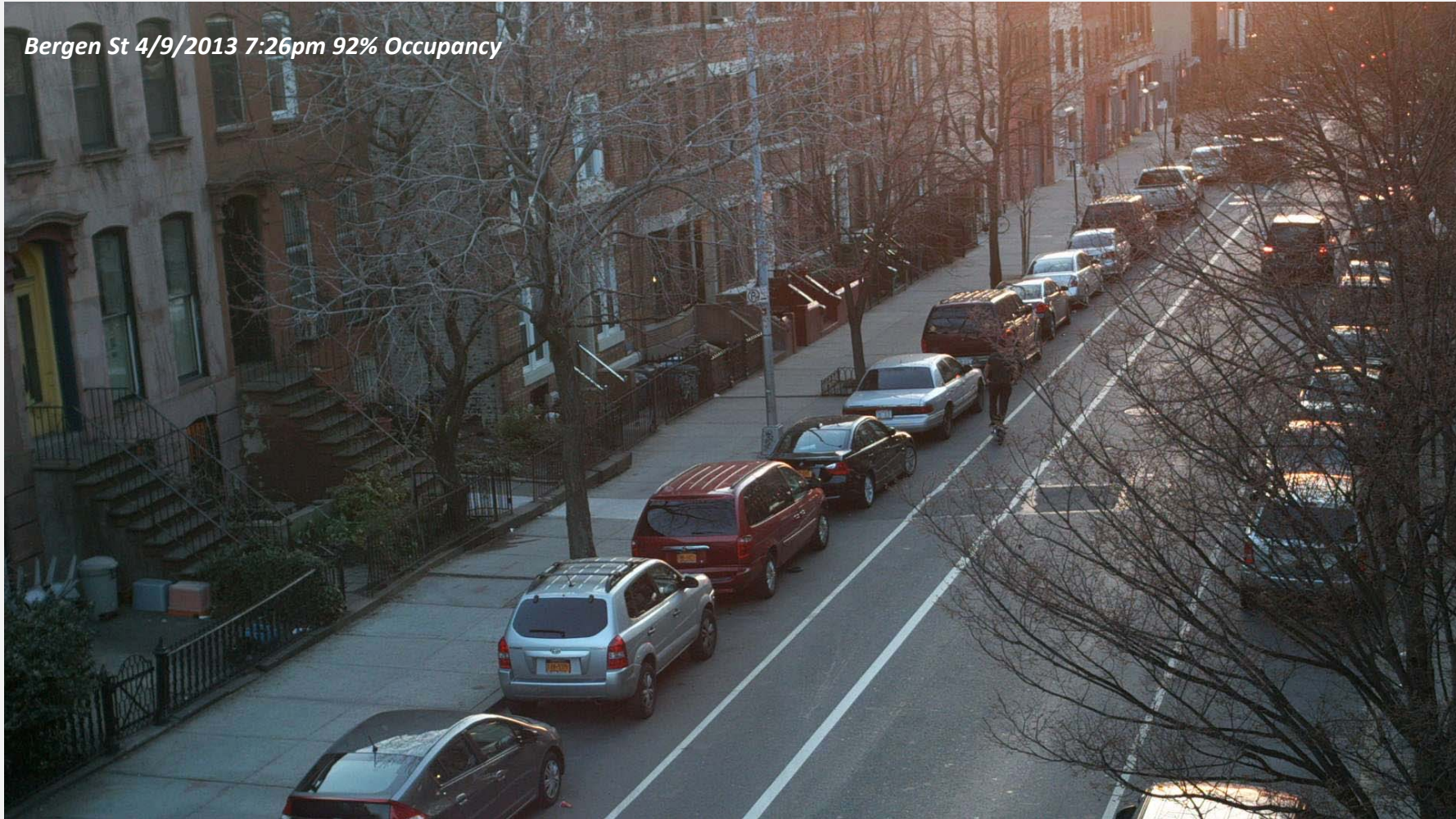
*Bergen St 4/8/2013 7:05pm 91% Occupancy*





# Event Day Parking

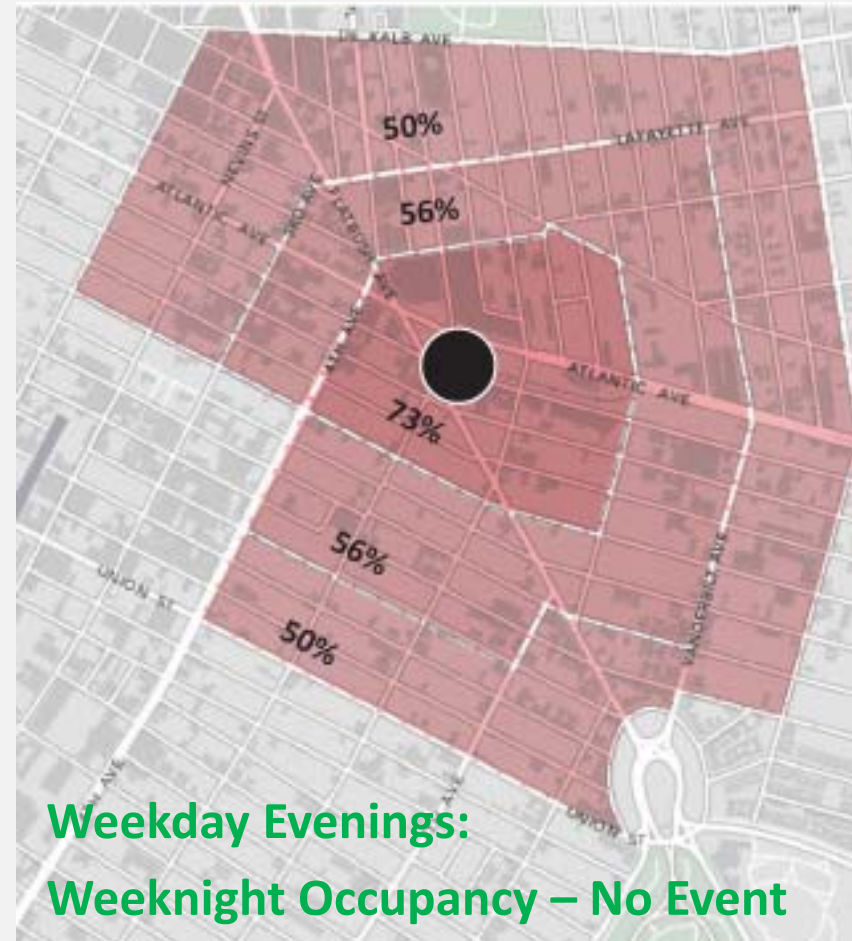
*Bergen St 4/9/2013 7:26pm 92% Occupancy*





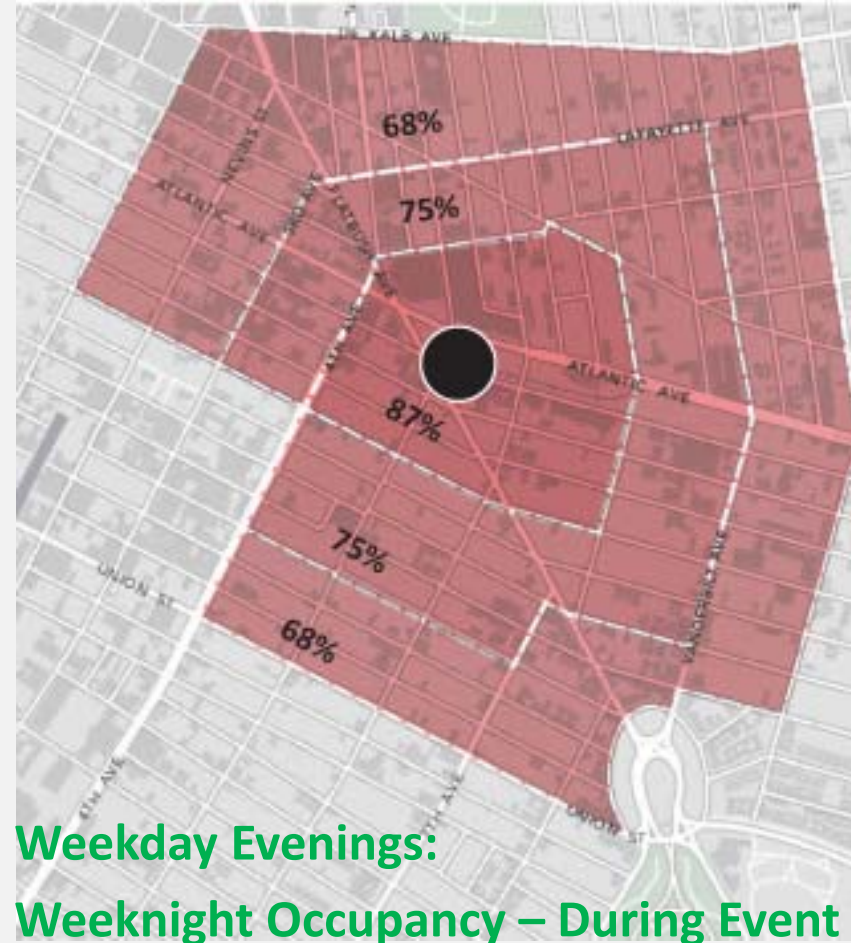
# Study Findings

The increase in parking occupancy is observed throughout the study area:



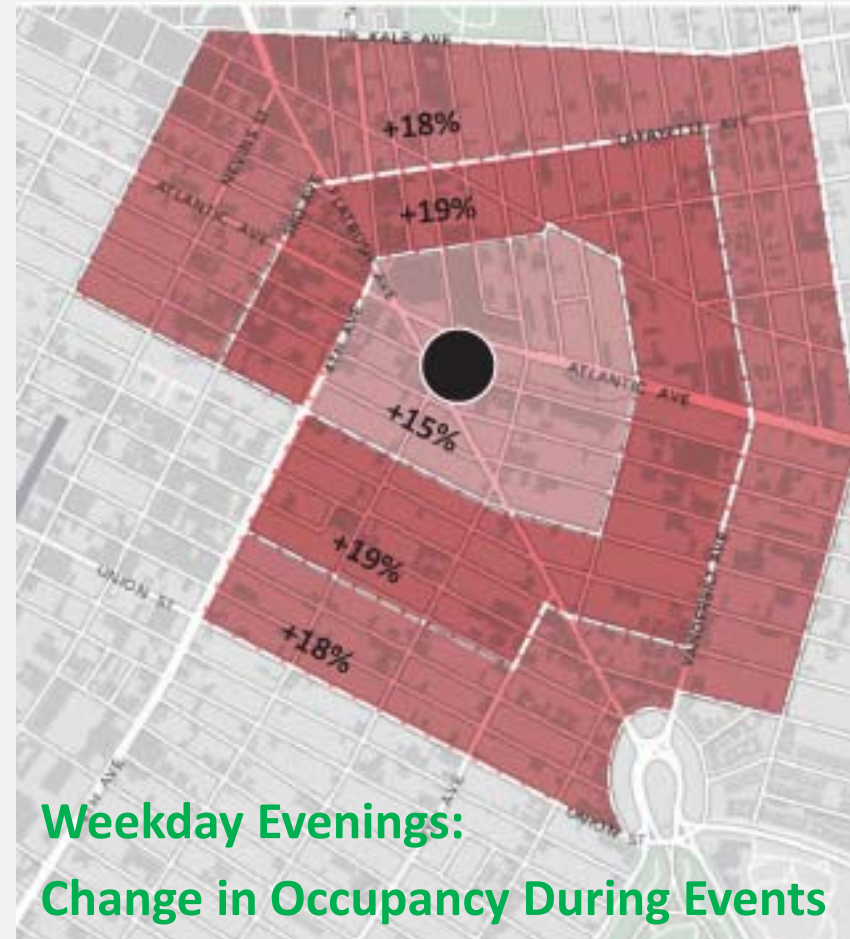
# Study Findings

The increase in parking occupancy is observed throughout the study area:



# Study Findings

The increase in parking occupancy is observed throughout the study area:

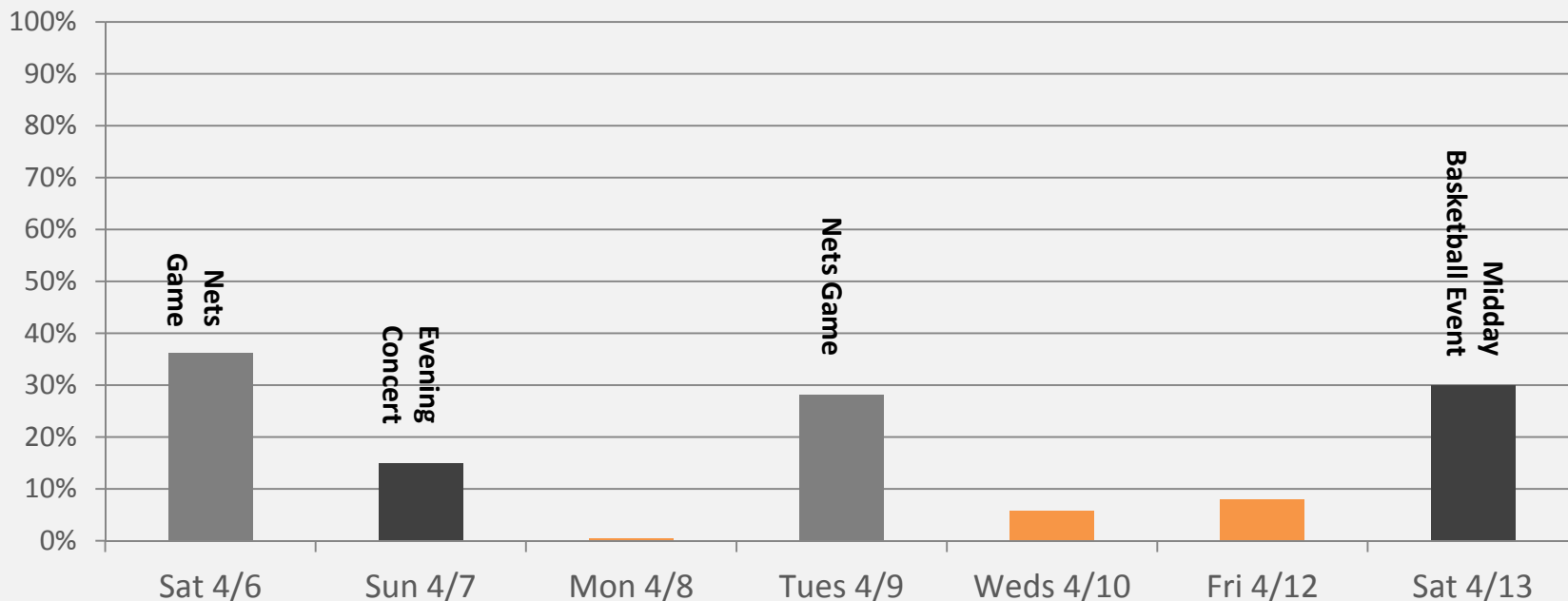


Weekday Evenings:  
Change in Occupancy During Events

# Study Findings

Data indicates that more blocks “fill up” on event days, but most blocks still have available spots.

Proportion of block faces at high occupancy (>85%)  
between 6pm and 7pm

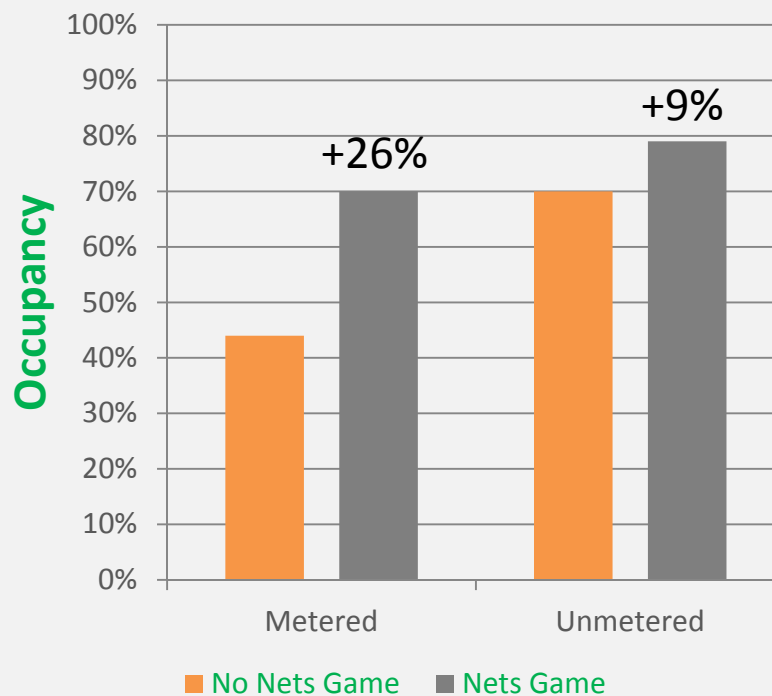




# Study Findings

The increases in parking occupancy on metered blocks is significantly higher than on non-metered blocks:

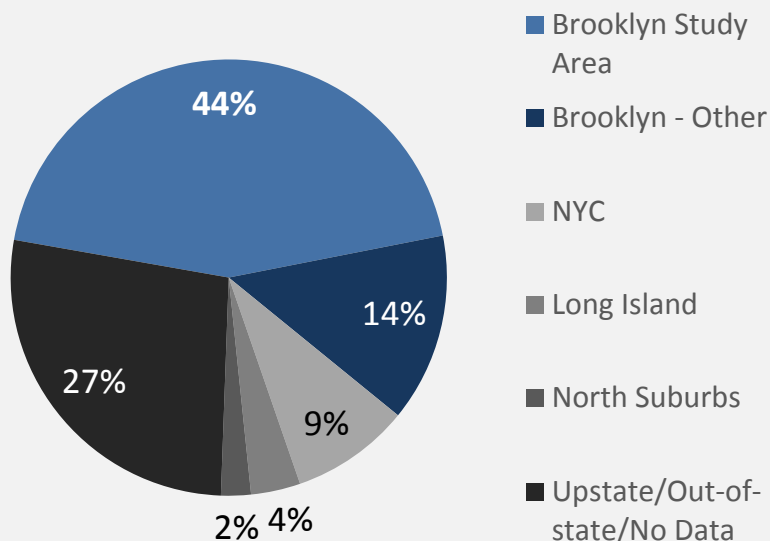
## Weekdays



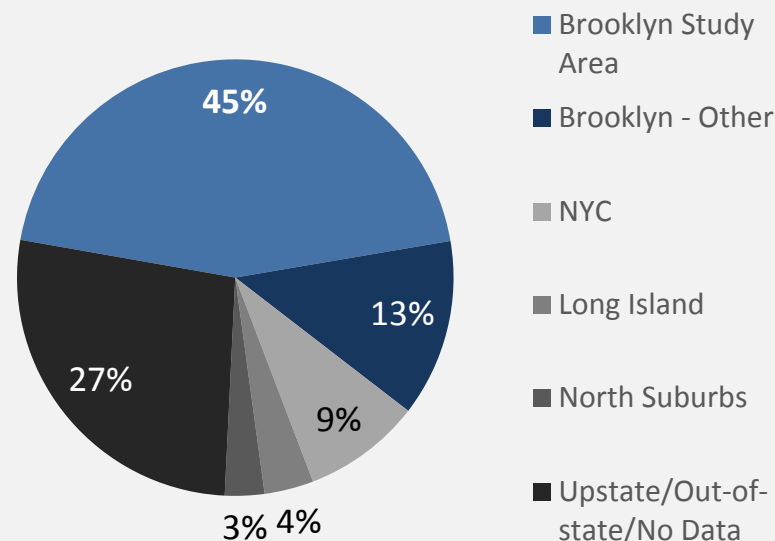
# Study Findings

Proportion of out-of-area parkers does not change significantly on event days.

Gameday (3,155 reads)



No Event (3,493 reads)



Proportion of parkers with local registration is higher than found in the 2011 survey

# Summary

- Parking occupancy increased on event days; however, most sampled blocks still had available spaces.
- Occupancy was highest closer to the arena and diminished away from the arena, both on event and non-event days
- Data indicates that parking impact of arena events was more significant on metered blocks.
  - Metered spaces become free at 7 pm, near the start of most arena events.
  - These blocks typically have overnight street cleaning regulations that discourage overnight parking.
  - Adjusting meter turn-off time to later in the evening may shift event parkers to non-metered spaces.