



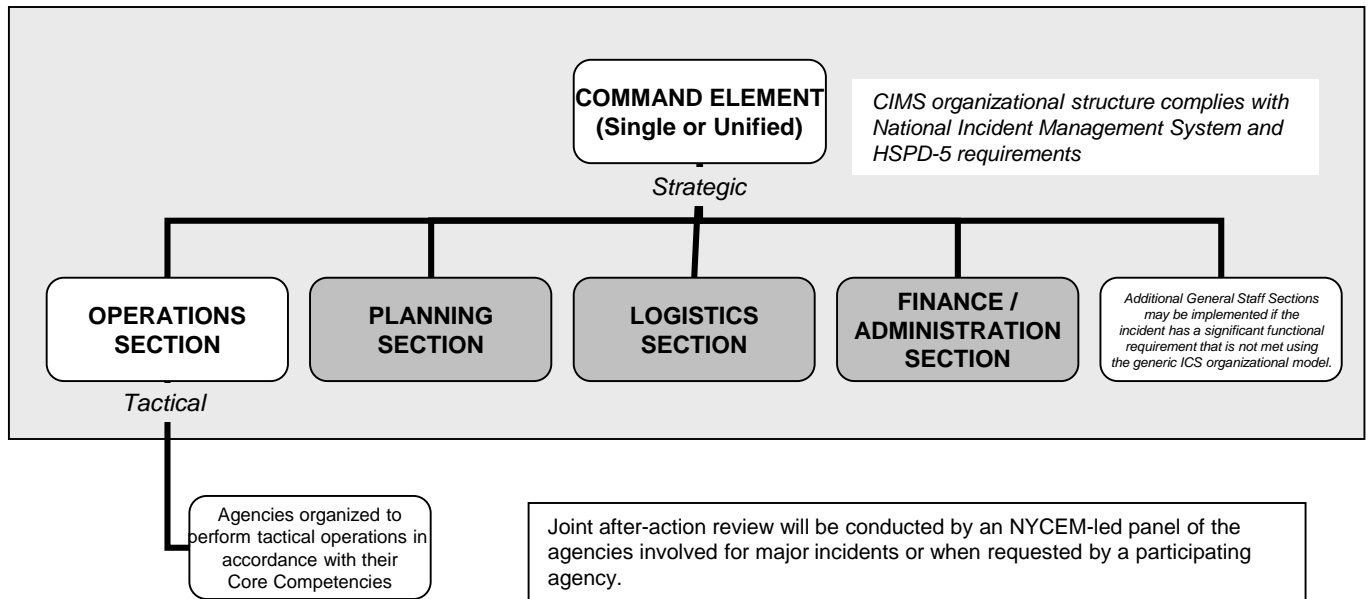
# Citywide Incident Management System Charts

**NYC** Emergency  
Management



# CIMS ICS Organization Chart

- CIMS is constantly evolving to:**
- Enhance an existing system that works well every day
  - Acknowledge the potential for terrorism in CBRN incidents
  - Comply with federal requirements
  - Enhance interagency communication and decision-making
  - Provide for a joint after-action review to constantly improve CIMS



Command Element	The Command Element is responsible for overall incident management and has the authority to make strategic and tactical decisions regarding the mitigation of the incident, define the Incident Objectives and determine what resources are required for the incident. The Command Element is responsible for working collaboratively with the Primary, Coordinating and Supporting Agencies to set Incident Objectives and priorities and is accountable for the effective deployment of available resources.
Operations Section	The Section responsible for all tactical operations at the incident. Includes Branches, Sectors and / or Groups, Task Forces, Strike Teams, Single Resources, and Staging Areas.
Planning Section	The Section responsible for the collection, evaluation, and dissemination of tactical information related to the incident, and for the preparation and documentation of Incident Action Plans. The Planning Section also maintains information on the current and forecasted situation and on the status of resources assigned to the incident.
Logistics Section	The Section responsible for providing facilities, services, and materials for the incident.
Finance / Administration Section	The Section responsible for tracking incident costs, personnel and equipment records, claims, procurement contracts and providing legal expertise and counsel, as needed. Most incidents will not require implementation of an on-site Finance / Administration Section. Instead incident costs will be tracked by the agencies providing personnel, equipment and support services to the incident.



# Core Competencies

**Core Competencies** are functional areas of expertise that relate specifically to tactical operations managed by the Operations Section. Agencies have the authority to direct operations related to their Core Competencies at incidents. If more than one agency is capable of performing the same tactical operations, the agency with the Core Competency will give tactical direction, by the ranking officer, to other agencies performing operations within that competency.

AGENCY	CORE COMPETENCIES
FDNY	<ul style="list-style-type: none"> <li>Fire Suppression</li> <li>Pre-hospital Emergency Medical Care</li> <li>Search and Rescue</li> <li>Structural Evacuation</li> <li>CBRN / Haz-Mat Life Safety and Mass Decontamination</li> <li>Arson Investigation (Cause and Origin)</li> </ul>
NYPD	<ul style="list-style-type: none"> <li>Law Enforcement and Investigation</li> <li>Intelligence Collection and Analysis</li> <li>Crime Scene Processing / Evidence Preservation</li> <li>Site Management <ul style="list-style-type: none"> <li>Perimeter Control</li> <li>Traffic Control</li> <li>Crowd Control</li> <li>Site Security and Force Protection</li> </ul> </li> <li>Evacuation (Area and / or Law Enforcement related)</li> <li>Water Search and Rescue</li> <li>CBRN / Haz-Mat Assessment and Investigation (Crime Scene / Terrorism)</li> <li>Accident Investigation</li> <li>VIP Protection</li> <li>Arson Investigation (Major Case)</li> </ul>
DOB	<ul style="list-style-type: none"> <li>Damage Assessment (Structural)</li> <li>Building Re-occupancy (Structural)</li> </ul>
DCAS	<ul style="list-style-type: none"> <li>Public Buildings: Infrastructure Assessment, Repair and Reconstruction</li> </ul>
DDC	<ul style="list-style-type: none"> <li>Technical Debris Management Operations</li> <li>Technical Stabilization, Remediation and Demolition</li> <li>Public Buildings, Roadways, Water and Wastewater: Infrastructure Assessment, Repair and Reconstruction</li> </ul>
DEP	<ul style="list-style-type: none"> <li>Environmental Monitoring, Sampling, Evaluation and Analysis</li> <li>Environmental Mitigation (Chemical)</li> <li>Environmental Law Enforcement</li> <li>Water and Wastewater: Infrastructure Assessment, Repair and Reconstruction</li> </ul>

AGENCY	CORE COMPETENCIES
DOHMH	<ul style="list-style-type: none"> <li>Disease Surveillance and Epidemiology</li> <li>Public Health Orders, Clinical Guidance and Risk Communication</li> <li>Mass Prophylaxis / Vaccination</li> <li>Laboratory Testing (Biological and Radiological)</li> <li>Public Health Assessment</li> <li>Environmental Mitigation (Radiological and Biological)</li> <li>Animal-Related Surveillance and Vector Control</li> <li>Mental Health Needs Assessment and Service Coordination</li> </ul>
HPD	<ul style="list-style-type: none"> <li>Stabilization, Remediation and Demolition</li> <li>Tenant Relocation</li> </ul>
DOITT	<ul style="list-style-type: none"> <li>Telecommunications: Infrastructure Assessment, Repair and Reconstruction</li> </ul>
OCME	<ul style="list-style-type: none"> <li>Fatality Management Operations</li> </ul>
NYCEM	<ul style="list-style-type: none"> <li>Interagency Coordination and Support</li> </ul>
DPR	<ul style="list-style-type: none"> <li>Forestry</li> <li>Parks: Infrastructure Assessment, Repair and Reconstruction</li> </ul>
DSNY	<ul style="list-style-type: none"> <li>Debris Management Operations (Non-Toxic And Non-Hazardous Debris)</li> <li>Snow Removal Operations</li> </ul>
DOT	<ul style="list-style-type: none"> <li>Bridges and Roadways: Infrastructure Assessment, Repair and Reconstruction</li> <li>Transportation Systems Management</li> <li>Staten Island Ferry Operations</li> </ul>
ConEd	<ul style="list-style-type: none"> <li>Electric, Gas and Steam: Infrastructure Assessment, Repair and Reconstruction</li> </ul>
National Grid	<ul style="list-style-type: none"> <li>Electric and Gas: Infrastructure Assessment, Repair and Reconstruction</li> </ul>
Verizon	<ul style="list-style-type: none"> <li>Telecommunications: Infrastructure Assessment, Repair and Reconstruction</li> </ul>



# Primary Agency Matrix

## UNIFIED COMMAND INCIDENTS

INCIDENT TYPE	PRIMARY AGENCIES	POTENTIAL PRIMARY AGENCIES / SUBJECT MATTER EXPERTS
Aviation Incident	FDNY, NYPD	PANYNJ, USCG, NTSB
Chemical, Biological, Radiological or Nuclear (CBRN) / Haz-Mat Incident *	NYPD, FDNY	DEP, DOHMH, USCG
Citywide Public Health Emergency	DOHMH, NYPD, FDNY	HHC, GNYHA
Explosion	FDNY, NYPD	DDC, DOB, HPD
Natural Disaster / Weather Emergency	NYCEM, NYPD, FDNY, DOT, DSNY	DDC, DEP, DOB, DOHMH, Con Ed, National Grid
Rail Incident	FDNY, NYPD	MTA, PANYNJ, NJT, Amtrak
Utility Incident: Electric	NYPD, FDNY	Con Ed, National Grid
Utility Incident: Gas	NYPD, FDNY	Con Ed, National Grid
Utility Incident: Steam	NYPD, FDNY	Con Ed
Utility Incident: Water / Wastewater	DEP, FDNY, NYPD	Con Ed, National Grid
Utility Incident: Telecommunications	DOITT, NYPD, FDNY	Verizon

### \* CBRN / Haz-Mat Incident

NYPD will be the Primary Agency (Incident Commander) at CBRN / Haz-Mat incidents. If NYPD determines there is no actual or suspected criminal activity or terrorism, a Unified Command will be implemented.

The Operations Section will be a Unified Operations Section based on agency Core Competencies in all circumstances, with NYPD responsible for overall site management, and assessment and investigations for criminal activity or terrorism, and with FDNY responsible for Life Safety Operations and mass decontamination. For chemical incidents, DEP will make a final assessment of the hazard, adjust or set "hot," "warm" and "cold" zones, and direct all mitigation efforts. For biological or radiological incidents, DOHMH will make a final assessment of the hazard, adjust or set "hot," "warm" and "cold" zones, and direct all mitigation efforts.

\* \* Designation of Potential Primary Agencies / Subject Matter Experts in this matrix does not exclude other agencies from being designated Primary Agencies depending on the jurisdictional issues of a specific incident.

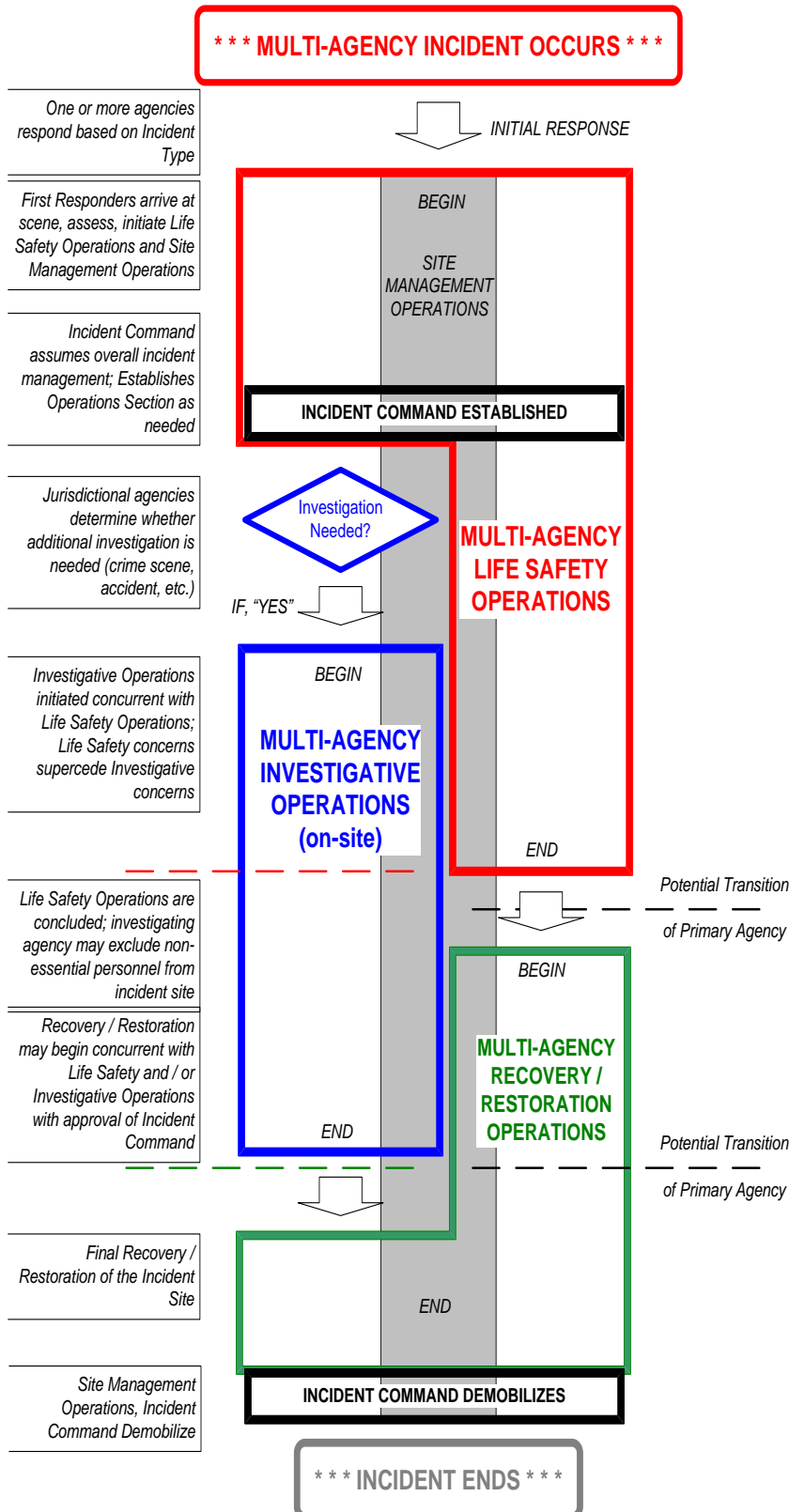
## SINGLE COMMAND INCIDENTS

INCIDENT TYPE	PRIMARY AGENCIES
Auto Extrication	NYPD / FDNY (First to arrive)
Boat in Distress	NYPD / FDNY (First to arrive)
Citywide Cyber Incident	NYPD and / or DOITT
Civil Disturbance	NYPD
Confined Space Rescue	FDNY
Correctional Facility Disturbance	DOC
Downed Tree	DPR / FDNY
Elevator Incident or Emergency	FDNY
Emotionally Disturbed Person	NYPD
Entrapment / Impalement	FDNY
Explosive Device, Bomb Threat	NYPD
Fire	FDNY
Hostage Incident	NYPD
Sniper Incident	NYPD
Special Event	NYPD
Structural Collapse	FDNY
Suspicious Package	NYPD
Water / Ice Rescue	NYPD

NYCEM, as the City's Coordinating Agency, may respond to multi-agency incidents and participate in either the Unified Command or Single Command responses. NYCEM is responsible for coordinating resources, relaying situation information to the City's Emergency Operations Center, and supporting logistical needs.



# Incident Sequence





# NYCEM ROLES & RESPONSIBILITIES

## On-scene Coordination

- Ensure that a CIMS command structure is in place;
- Ensure that interoperable communications are in use
- Coordinate resources from response and recovery agencies;
- Relay situation information to the City's Emergency Operations Center and to the Mayor;
- Support logistics and communications needs;
- Obtain subject matter expertise;
- Facilitate transition of command and resolution of interagency differences; and
- In complex incidents where the Primary Agency designation is unclear, falls outside of the incident types listed in the Primary Agency Matrix or changes as Incident Objectives are completed, NYCEM, based on the CIMS Protocol, will identify the appropriate Primary Agency or Agencies.

## Emergency Operations Center

- Activate the City's Emergency Operations Center in response to citywide or large-scale emergencies or events, or multiple smaller incidents, to centralize decision-making and information sharing and to allocate and deploy resources.
- In the context of NIMS, the City's EOC is the location and entity that performs the functions of an Area Command.

## After-Action Review

- Organize and lead after-action reviews for incidents if requested by a participating agency, or if recommended by NYCEM.

## CIMS Implementation

- Issue, update and maintain the CIMS Protocol to ensure consistency with NIMS and compliance with federal requirements and incorporates lessons learned and best practices
- Establish and maintain a CIMS training curriculum for use by all City agencies