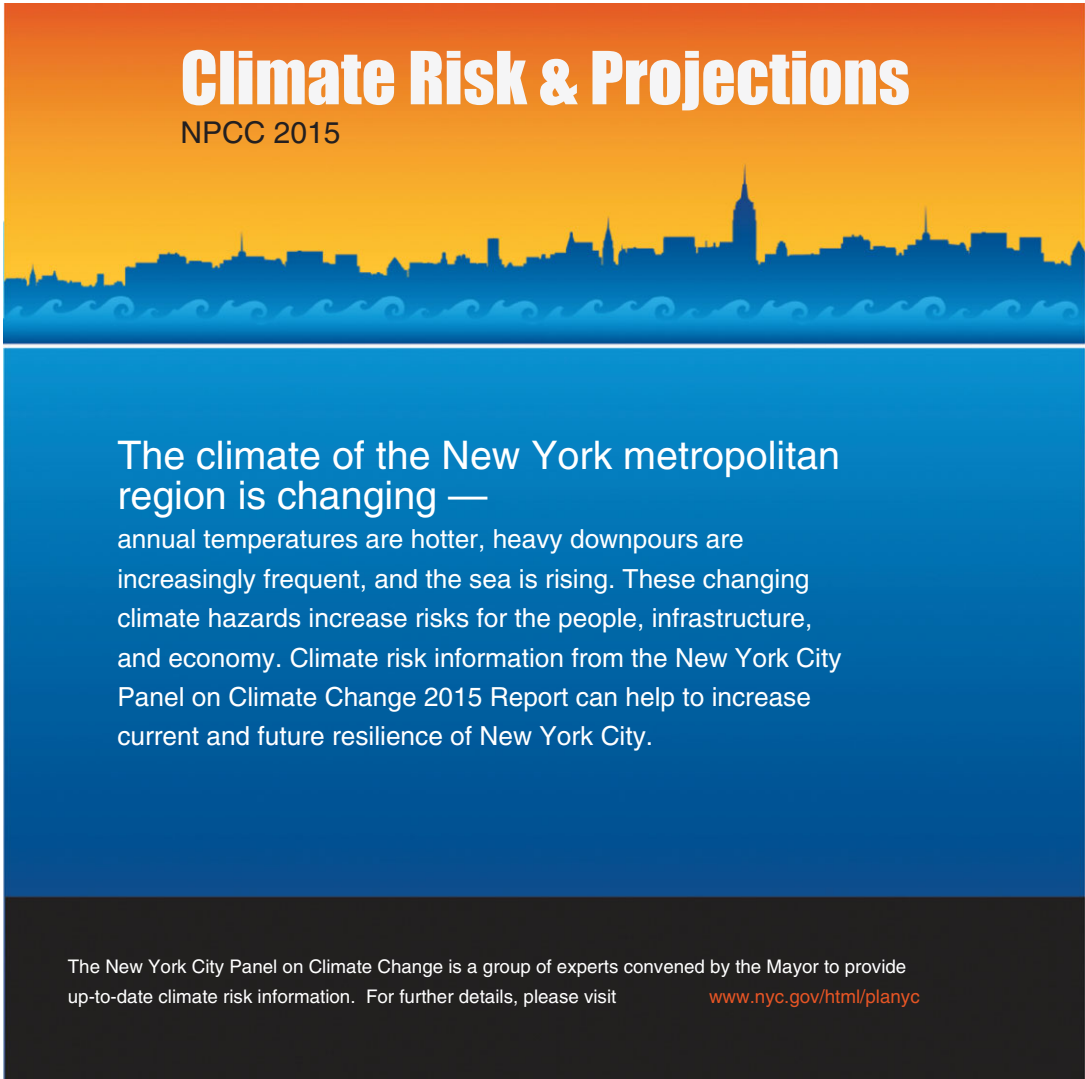


Appendix I: Climate Risk and Projections NPCC 2015 Infographics



Climate Risk & Projections
NPCC 2015

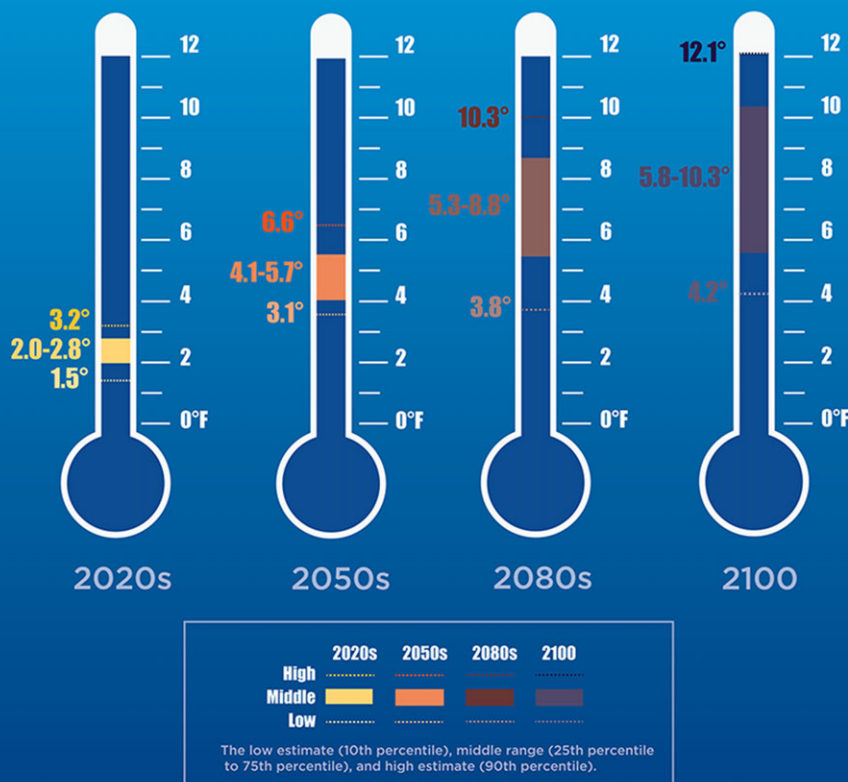
The climate of the New York metropolitan region is changing — annual temperatures are hotter, heavy downpours are increasingly frequent, and the sea is rising. These changing climate hazards increase risks for the people, infrastructure, and economy. Climate risk information from the New York City Panel on Climate Change 2015 Report can help to increase current and future resilience of New York City.

The New York City Panel on Climate Change is a group of experts convened by the Mayor to provide up-to-date climate risk information. For further details, please visit www.nyc.gov/html/planyc

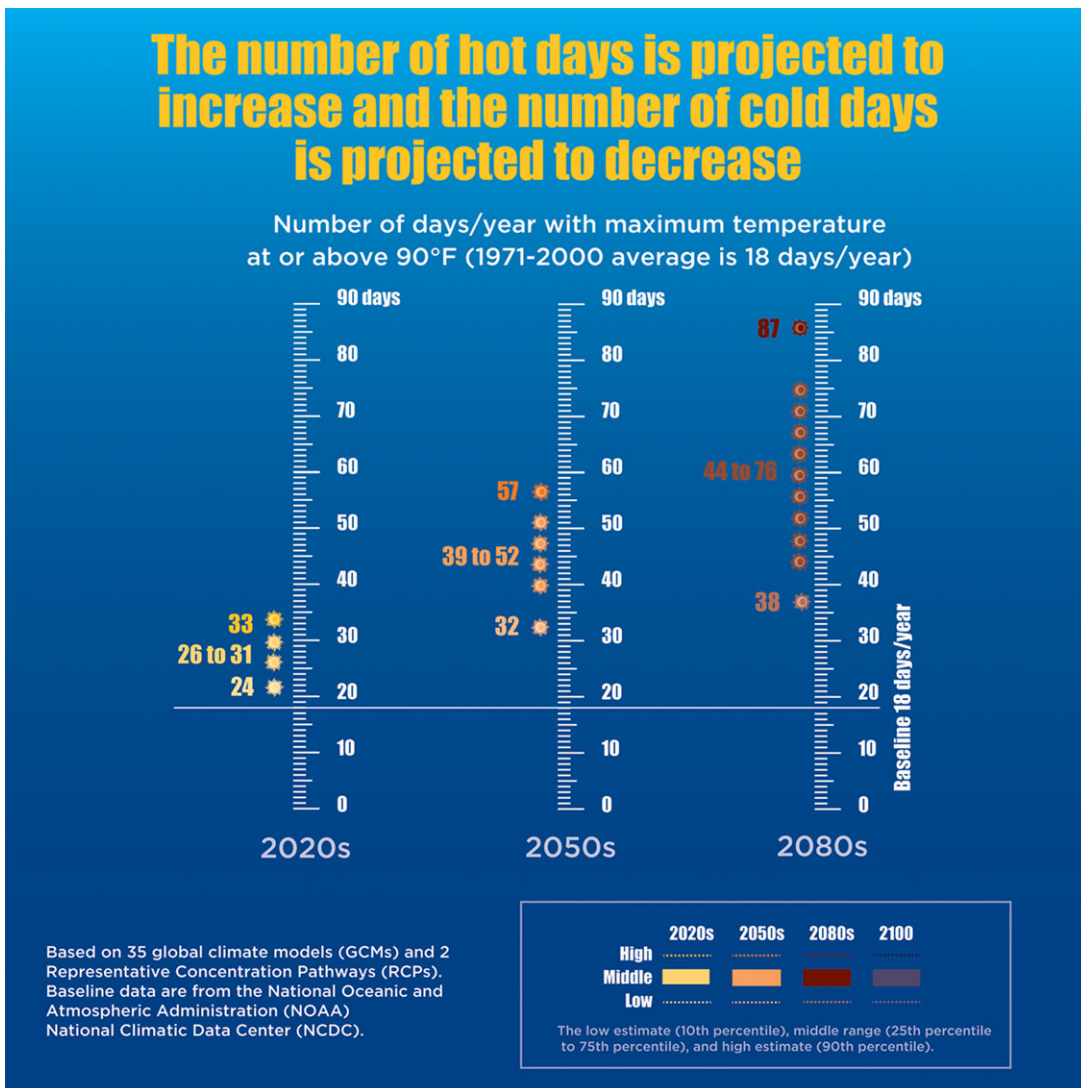
Infographic 1.

Temperatures are extremely likely to increase in New York City through the end of the century

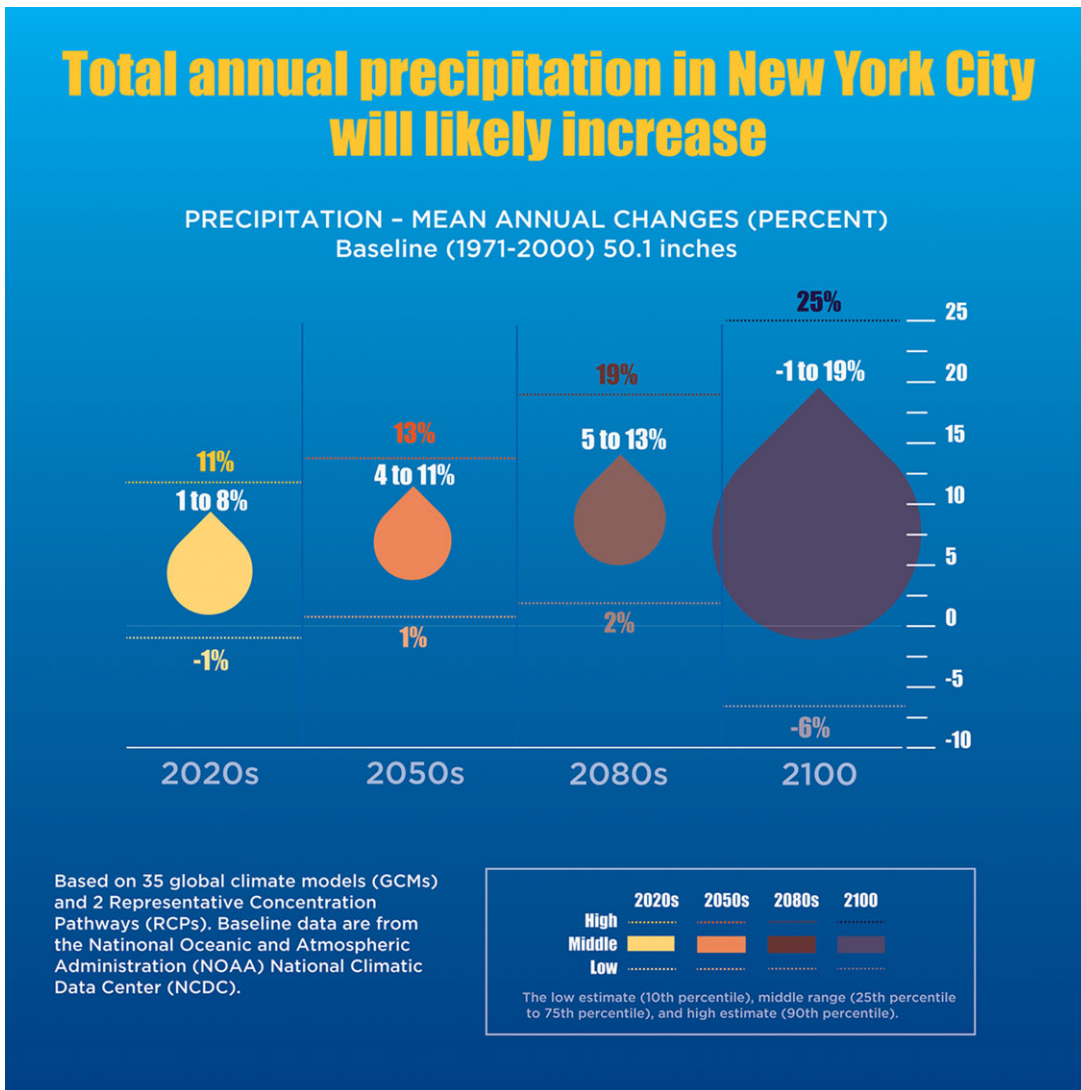
TEMPERATURE - MEAN ANNUAL CHANGES
Baseline (1971-2000) 54°F



Infographic 2.



Infographic 3.

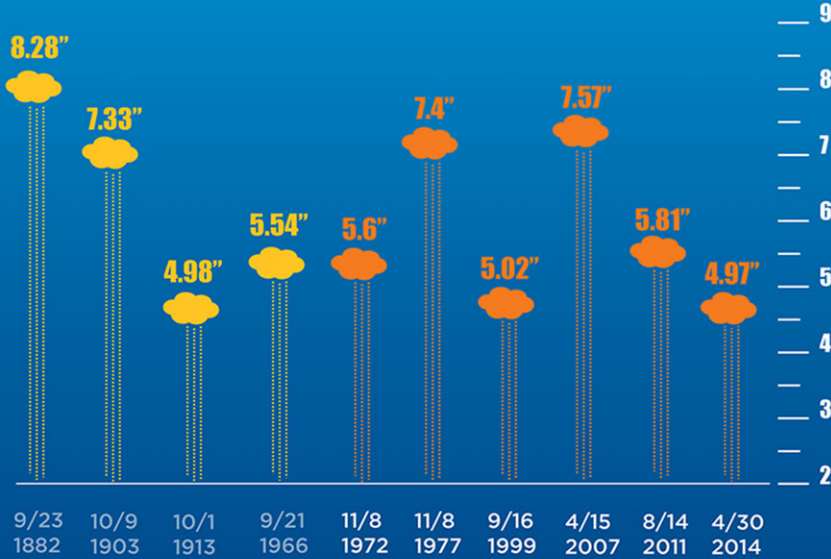


Infographic 4.

6 of the 10 wettest days on record in NYC have occurred since 1972

Heavy precipitation events in the Northeast have been increasing and this trend is projected to continue.

PRECIPITATION - TOP 10 WETTEST DAYS IN CENTRAL PARK

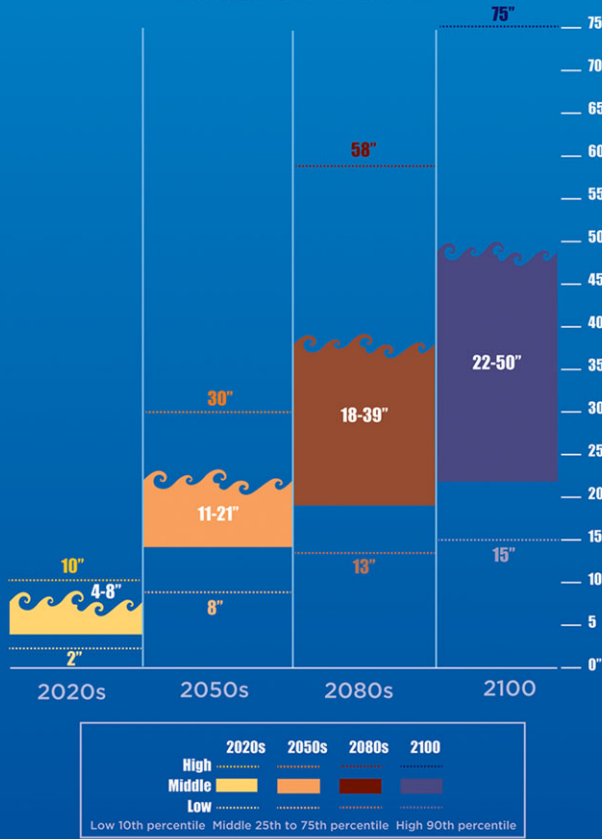


Data are from the National Weather Service and are for Central Park, New York. Record dates back to 1869.

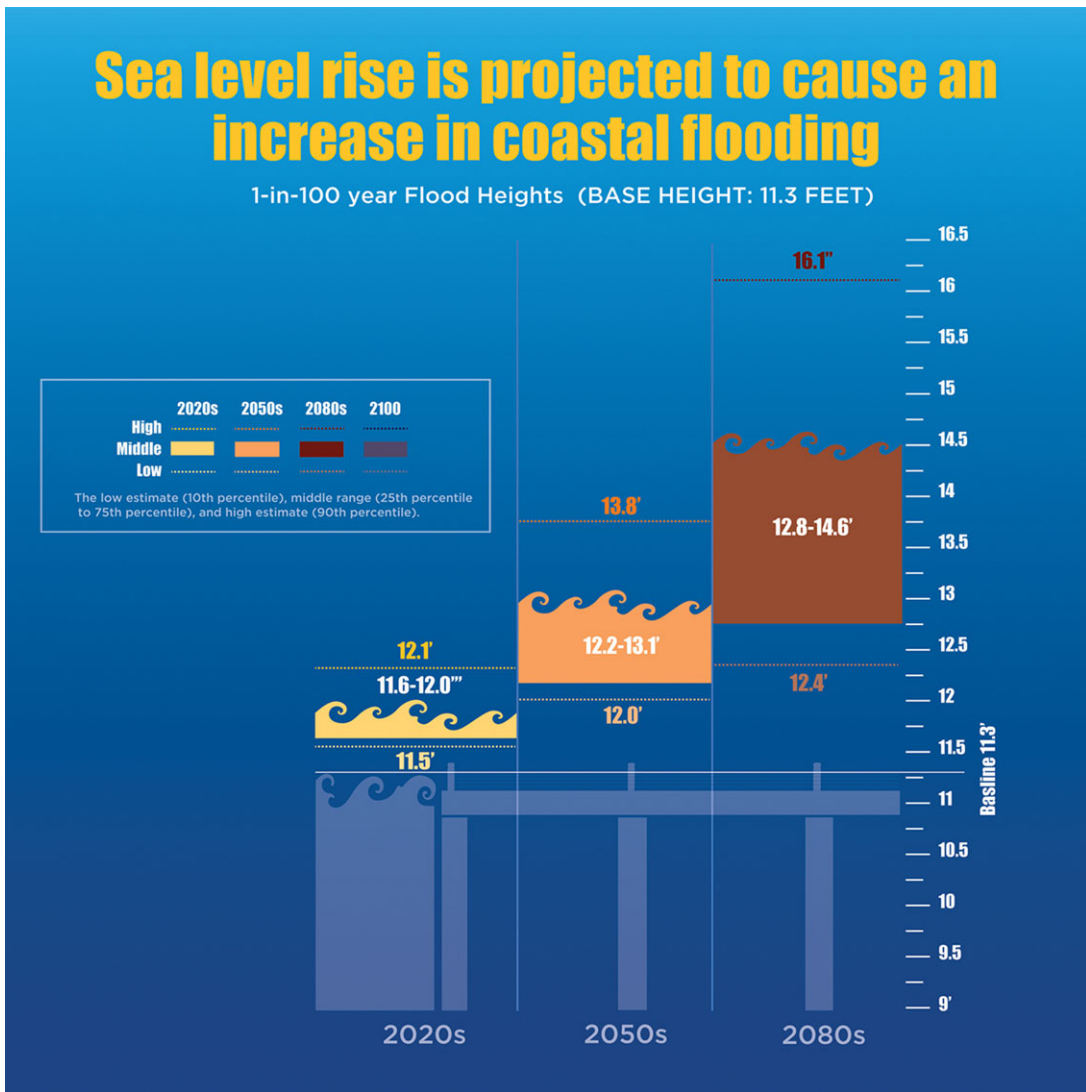
Infographic 5.

Sea level rise in New York City is very likely to accelerate as the century progresses

SEA LEVEL - MEAN ANNUAL CHANGES
Baseline (2000-2004)



Infographic 6.



Infographic 7.