



Bronx Community District 2:

HUNTS POINT AND LONGWOOD



Health is rooted in the circumstances of our daily lives and the environments in which we are born, grow, play, work, love and age. Understanding how **community conditions affect our physical and mental health** is the first step toward building a healthier New York City.



HUNTS POINT AND LONGWOOD TOTAL POPULATION

54,069

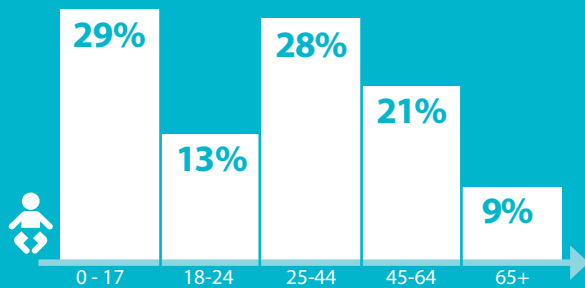
POPULATION BY RACE AND ETHNICITY

76% Hispanic

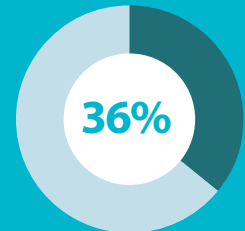
22% Black*

1% Asian*
1% White*
1% Other*

POPULATION BY AGE



HAVE LIMITED ENGLISH PROFICIENCY



PERCENT WHO REPORTED THEIR OWN HEALTH AS "EXCELLENT," "VERY GOOD" OR "GOOD"



LIFE EXPECTANCY

77.6 YEARS

* Non-Hispanic

Note: Percentages may not sum to 100% due to rounding

Sources: Overall population, race and age: U.S. Census Bureau Population Estimates, 2013; Foreign born and English proficiency: U.S. Census Bureau, American Community Survey, 2011-2013; Self-reported health: NYC DOHMH Community Health Survey, 2011-2013; Life Expectancy: NYC DOHMH Bureau of Vital Statistics, 2003-2012



Note from Dr. Mary Bassett, Commissioner, New York City Department of Health and Mental Hygiene

New York City is a city of neighborhoods. Their diversity, rich history and people are what make this city so special.

But longstanding and rising income inequality, combined with a history of racial residential segregation, has led to startling health inequities between neighborhoods. Poor health outcomes tend to cluster in places that people of color call home and where many residents live in poverty. Life expectancy in Brownsville, for example, is 11 years shorter than in the Financial District. And this is not because residents of Brownsville are dying of unusual diseases, but because they are dying of the same diseases – mostly heart disease and cancer – at younger ages and at higher rates.

This is unfair and avoidable. A person's health should not be determined by his or her ZIP code.

Reducing health inequities requires policymakers, health professionals, researchers and community groups to advocate and work together for systemic change. In *One New York: The Plan for a Strong and Just City (OneNYC)*, Mayor Bill de Blasio has outlined a vision to transform this city, and every neighborhood, guided by the principles of growth, equity, sustainability and resiliency.

Our communities are not simply made up of individual behaviors, but are dynamic places where individuals interact with each other, with their immediate environments and with the policies that shape those environments. The Community Health Profiles include indicators that reflect a broad set of conditions that impact health.

Our hope is that you will use the data and information in these Community Health Profiles to advocate for your neighborhoods.

A handwritten signature in black ink that reads "Mary T. Bassett". The signature is fluid and cursive.

MARY T. BASSETT, MD, MPH

Navigating this document

This profile covers all of Bronx Community District 2, which includes **Hunts Point and Longwood**. This is one of 59 community districts in New York City (NYC).

Community districts are ranked on each indicator. The highest rank (#1) corresponds to the largest value for a given measure. Sometimes a high rank indicates a positive measure of health (e.g., ranking first in flu vaccination). Other times, it indicates a negative measure of health (e.g., ranking first in the premature death rate).

The following color coding system is used throughout this document:

HUNTS POINT AND LONGWOOD
BEST-PERFORMING COMMUNITY DISTRICT
THE BRONX
NEW YORK CITY

TABLE OF CONTENTS



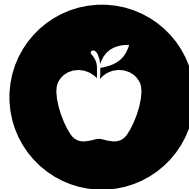
WHO WE ARE
PAGE 2



NEIGHBORHOOD CONDITIONS
PAGE 5



SOCIAL AND ECONOMIC CONDITIONS
PAGES 6 AND 7



HEALTHY LIVING
PAGES 8 AND 9



HEALTH CARE
PAGE 10



HEALTH OUTCOMES
PAGES 11, 12 AND 13



NOTES
PAGES 14 AND 15



MAP AND CONTACT INFORMATION
BACK COVER



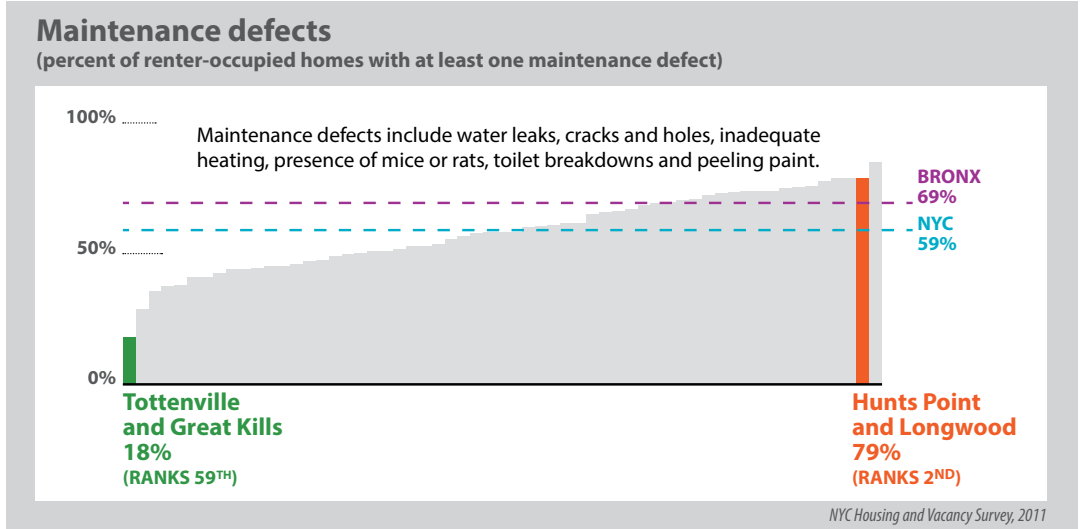
NEIGHBORHOOD CONDITIONS

Where we live determines the quality of the air we breathe, the homes we live in, how safe we feel, what kinds of food we can easily access and more.

When healthy foods are readily available, it is easier to make healthy choices.

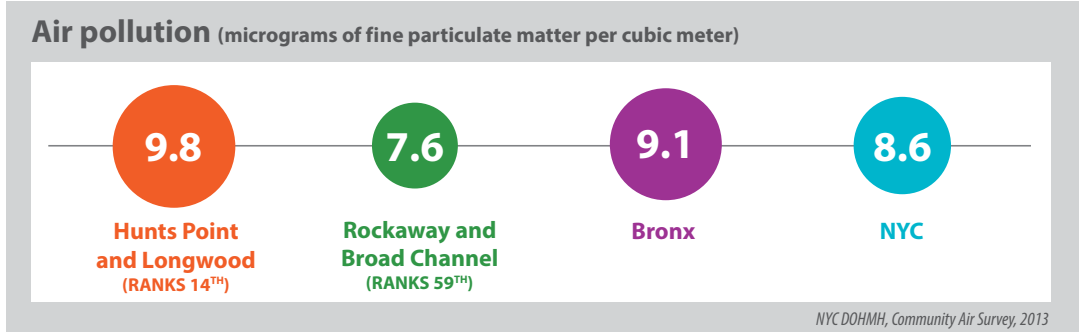
Housing quality

Poorly maintained housing is associated with negative health outcomes, including asthma and other respiratory illnesses, injuries and poor mental health. **Hunts Point and Longwood** has one of the highest percentages of homes with maintenance defects in the city.



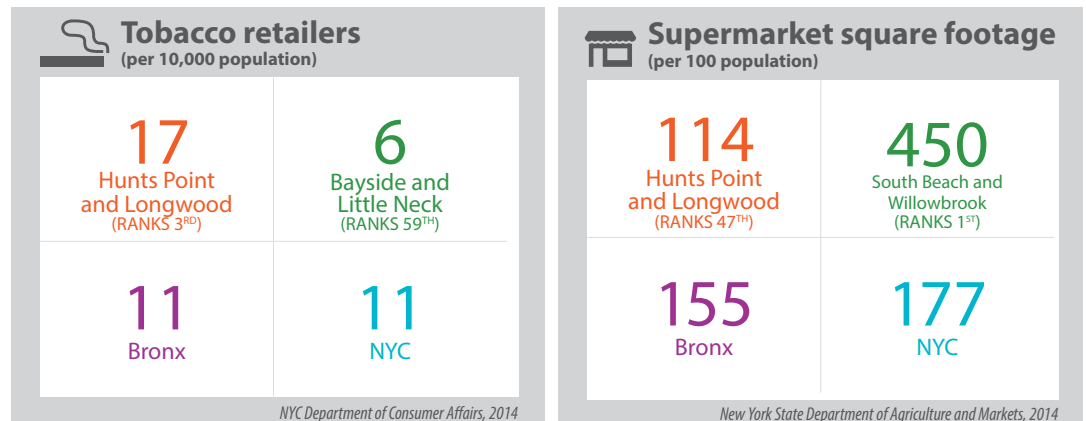
Air pollution

Although NYC air quality is improving, air pollution, such as fine particles (PM_{2.5}), can cause health problems, particularly among the very young, seniors and those with preexisting health conditions. In **Hunts Point and Longwood**, levels of PM_{2.5}, the most harmful air pollutant, are 9.8 micrograms per cubic meter, compared with 9.1 in the Bronx and 8.6 citywide.



Retail environment

Hunts Point and Longwood has the third-highest rate of tobacco retailers in the city. Supermarket access is limited, with only 114 square feet of supermarket space per 100 people.





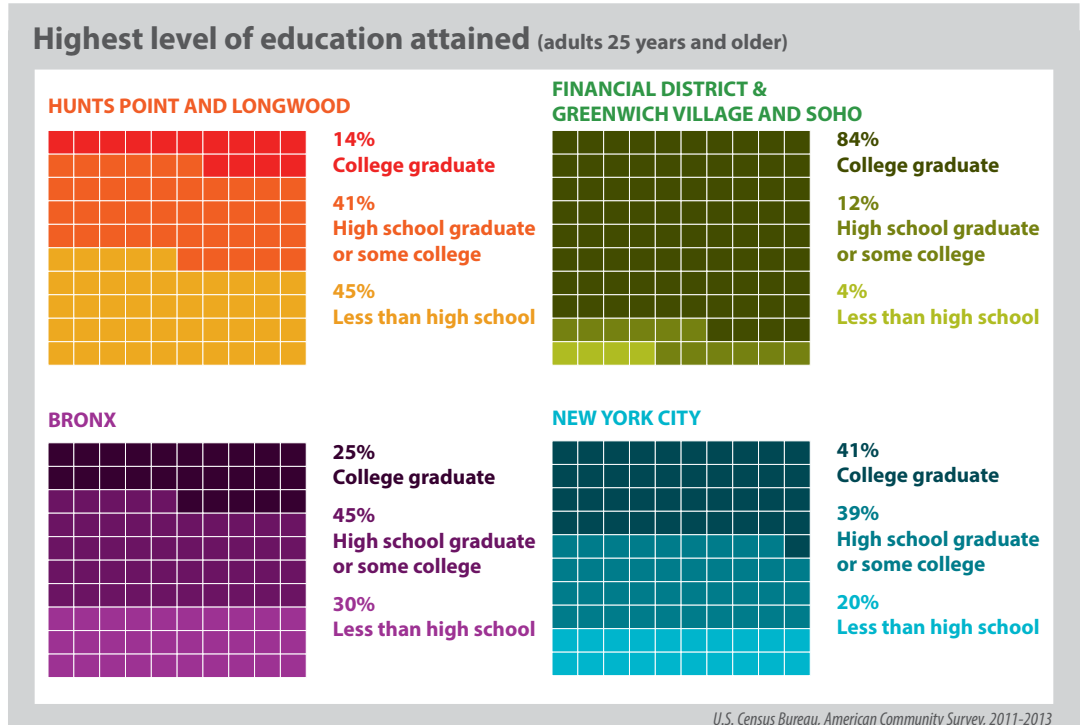
SOCIAL AND ECONOMIC CONDITIONS

Higher education levels are associated with better health outcomes.

43% of **Hunts Point and Longwood** residents live below the Federal Poverty Level; it is the third-poorest neighborhood in NYC. The six highest-poverty neighborhoods in NYC are in the Bronx.

Adult educational attainment

Hunts Point and Longwood has the highest percentage of adults who have not completed high school (45%) and the lowest percentage of adults with college degrees (14%) in all of NYC.



Income

Living in poverty limits healthy lifestyle choices and makes it difficult to access health care and resources that can promote health and prevent illness. Unemployment and unaffordable housing are also closely associated with poverty and poor health. About one in six **Hunts Point and Longwood** adults ages 16 and older is unemployed, and 59% of residents spend more than 30% of their monthly gross income on rent.

One way to consider the effect of income on health is by comparing death rates among neighborhoods. Assuming that the death rates from the five neighborhoods with the highest incomes are achievable in **Hunts Point and Longwood**, it is estimated that 40% of deaths could have been averted.

Economic stress

	Hunts Point and Longwood	Best-performing community district	Bronx	NYC
Poverty	43% (RANKS 3 RD)	6% Tottenville and Great Kills (RANKS 59 TH)	31%	21%
Unemployment	16% (RANKS 8 TH)	5% Greenwich Village and Soho & Financial District (RANKS 58 TH)	16%	11%
Rent burden	59% (RANKS 11 TH)	37% Greenwich Village and Soho & Financial District (RANKS 58 TH)	58%	51%

Poverty, unemployment and rent burden : U.S. Census Bureau, American Community Survey, 2011-2013; Avertable deaths: NYC DOHMH, Bureau of Vital Statistics 2008-2012



SOCIAL AND ECONOMIC CONDITIONS

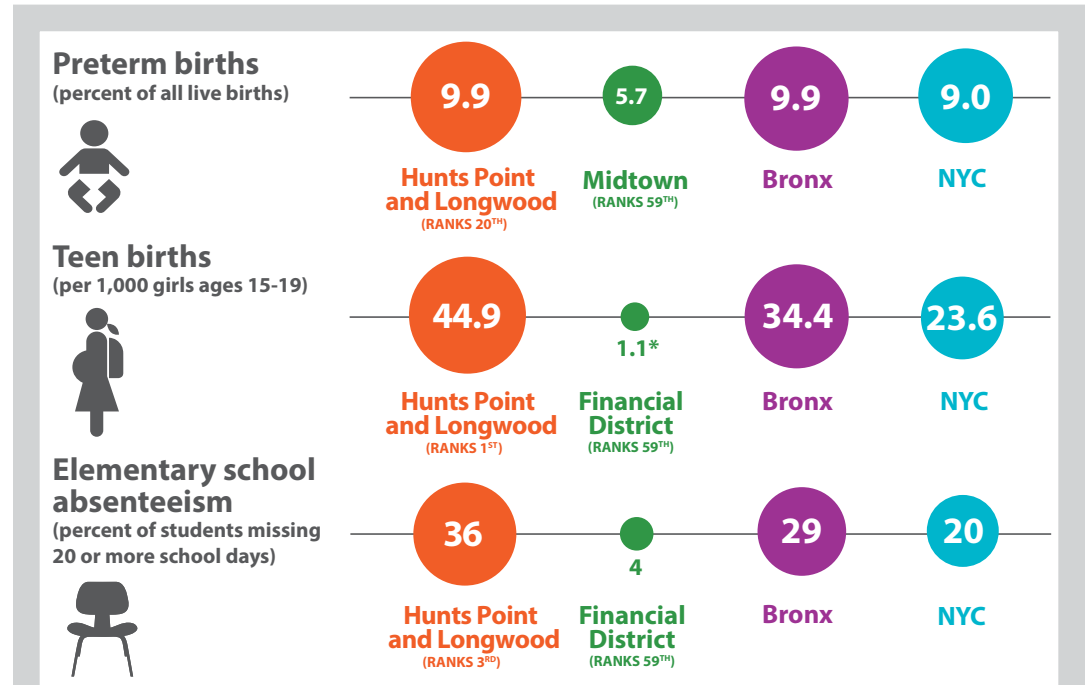
Child and adolescent health are a signal of a community's current well-being and potential.

People who are incarcerated have higher rates of mental illness, drug and alcohol addiction and other health conditions.

Non-fatal assault hospitalizations capture the consequences of community violence.

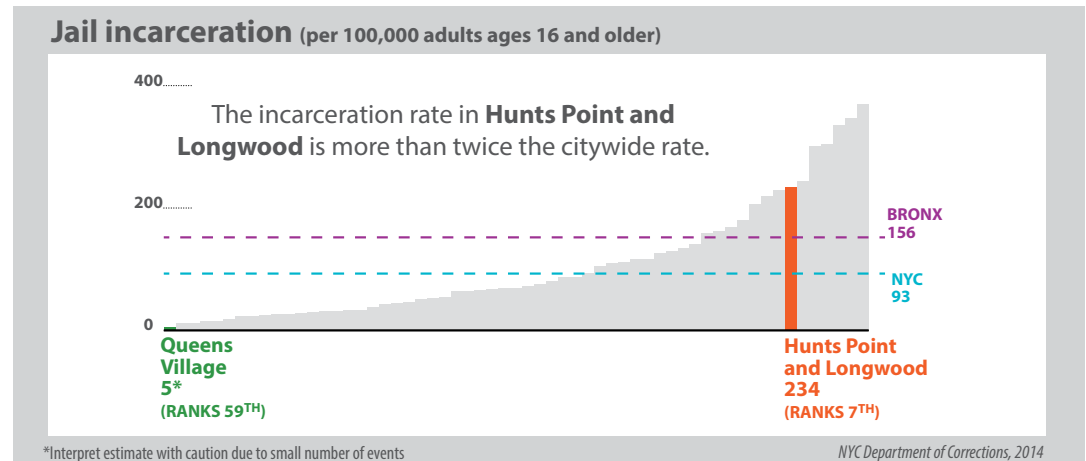
Children and adolescents

The littlest New Yorkers all deserve the same opportunities for health. In **Hunts Point and Longwood**, the rate of preterm births, a key driver of infant death, is higher than in Midtown, the teen birth rate is the highest citywide, and the percentage of elementary school students who miss 20 or more school days is third-highest in the city.



* Interpret estimate with caution due to small number of events
 Preterm births: NYC DOHMH, Bureau of Vital Statistics, 2013; Teen births: NYC DOHMH, Bureau of Vital Statistics, 2011-2013; Absenteeism: NYC Department of Education, 2013-2014

Incarceration

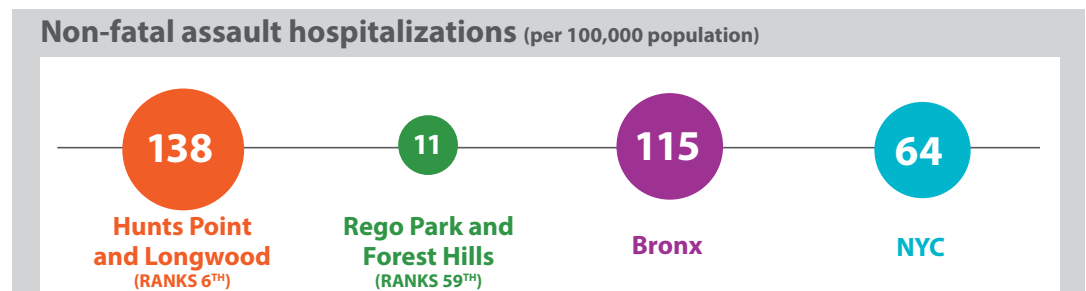


* Interpret estimate with caution due to small number of events

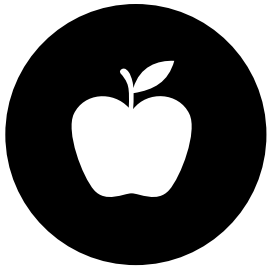
NYC Department of Corrections, 2014

Violence

The injury assault rate in **Hunts Point and Longwood** is more than twice the citywide rate.



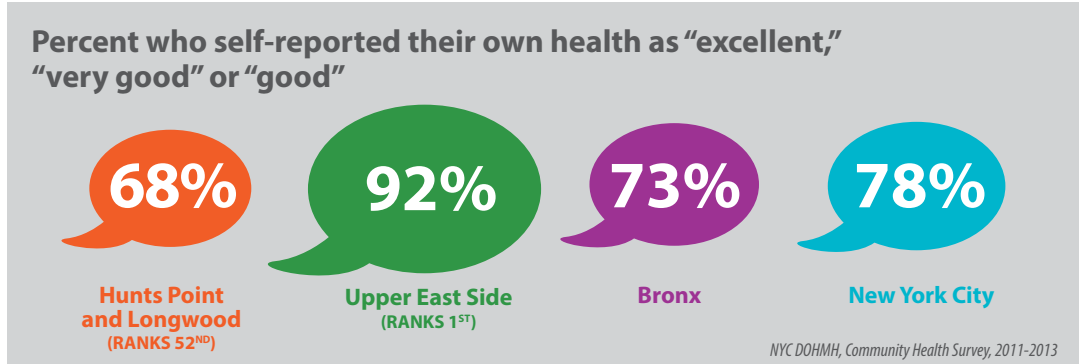
New York State Department of Health, Statewide Planning and Research Cooperative System, 2011-2013



HEALTHY LIVING

Self-reported health

People are good at rating their own health. When asked to rate their overall health on a scale of one to five (excellent, very good, good, fair or poor), 68% of **Hunts Point and Longwood** residents rate their health as “excellent,” “very good” or “good.”



Smoking, diet and physical activity

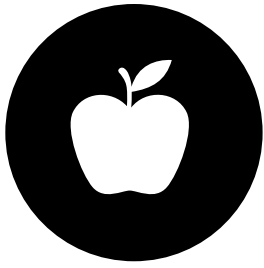
Smoking, poor quality diet and physical inactivity are risk factors for high blood pressure, diabetes and other problems. Adults in **Hunts Point and Longwood** smoke at a rate similar to residents of the Bronx and the city as a whole. However, adults in **Hunts Point and Longwood** are more likely to consume sugary drinks, and are less likely to eat fruits and vegetables and get physical activity than adults citywide.

77% of **Hunts Point and Longwood** adults consume at least one fruit or vegetable per day, the lowest percentage in the city.

	Hunts Point and Longwood	Best-performing community district	Bronx	NYC
Current smokers	16% (RANKS 24 TH)	10% East Flatbush (RANKS 59 TH)	16%	15%
1 or more 12 oz sugary drink per day	38% (RANKS 5 TH)	12% Stuyvesant Town and Turtle Bay (RANKS 59 TH)	35%	27%
At least one serving of fruits or vegetables per day	77% (RANKS 58 TH)	95%* Bayside and Little Neck (RANKS 1 ST)	82%	88%
Any physical activity in the last 30 days	70% (RANKS 56 TH)	90% Clinton and Chelsea & Midtown (RANKS 1 ST)	74%	77%

*Interpret estimate with caution due to small sample size

All: NYC DOHMH, Community Health Survey, 2011-2013

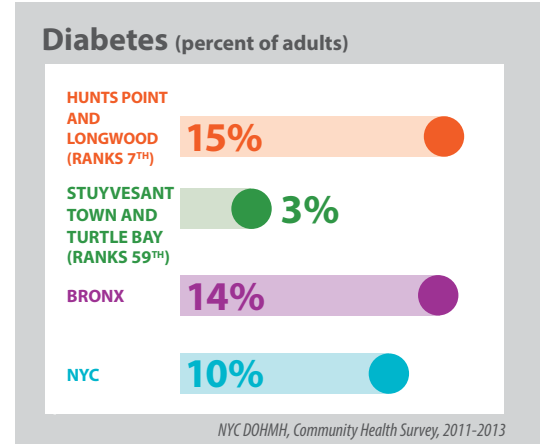
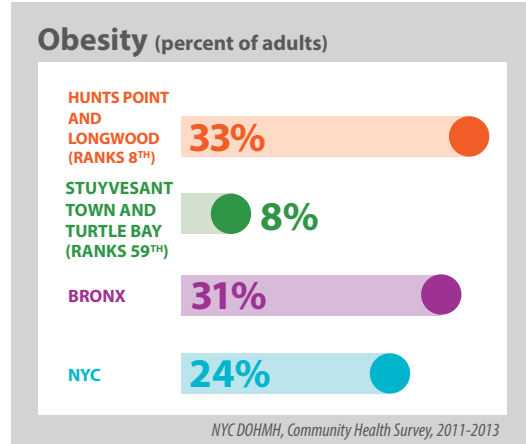


HEALTHY LIVING

Exercise is one way to maintain a healthy weight. Federal guidelines say that children should get 60 minutes of exercise per day, adults should get 150 minutes per week, and older adults should get 150 minutes per week as their physical abilities allow, with a focus on exercises to improve balance.

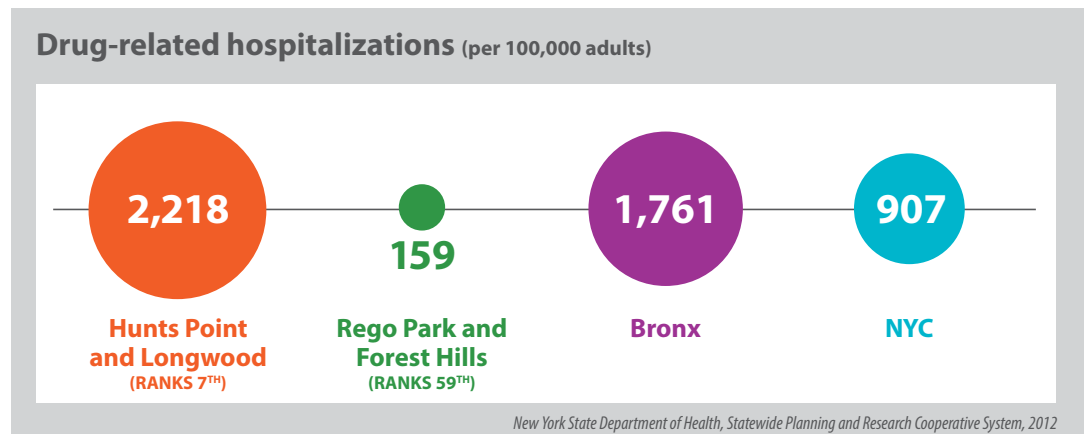
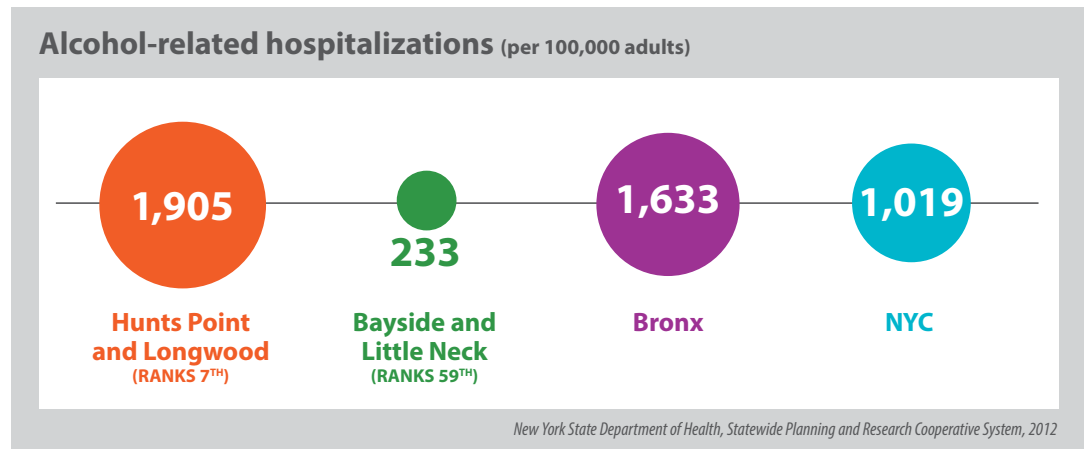
Obesity and diabetes

Obesity can lead to serious health problems, such as diabetes and heart disease. At 33%, the rate of obesity in **Hunts Point and Longwood** is higher than the citywide rate and over four times the rate in Stuyvesant Town and Turtle Bay. The diabetes rate in **Hunts Point and Longwood** is 15%, higher than the citywide rate and five times the rate in Stuyvesant Town and Turtle Bay.



Substance use

Drug- and/or alcohol-related hospitalizations reflect acute and chronic consequences of substance misuse. In **Hunts Point and Longwood** such hospitalization rates are higher than in the Bronx as a whole and are about twice the rates citywide.





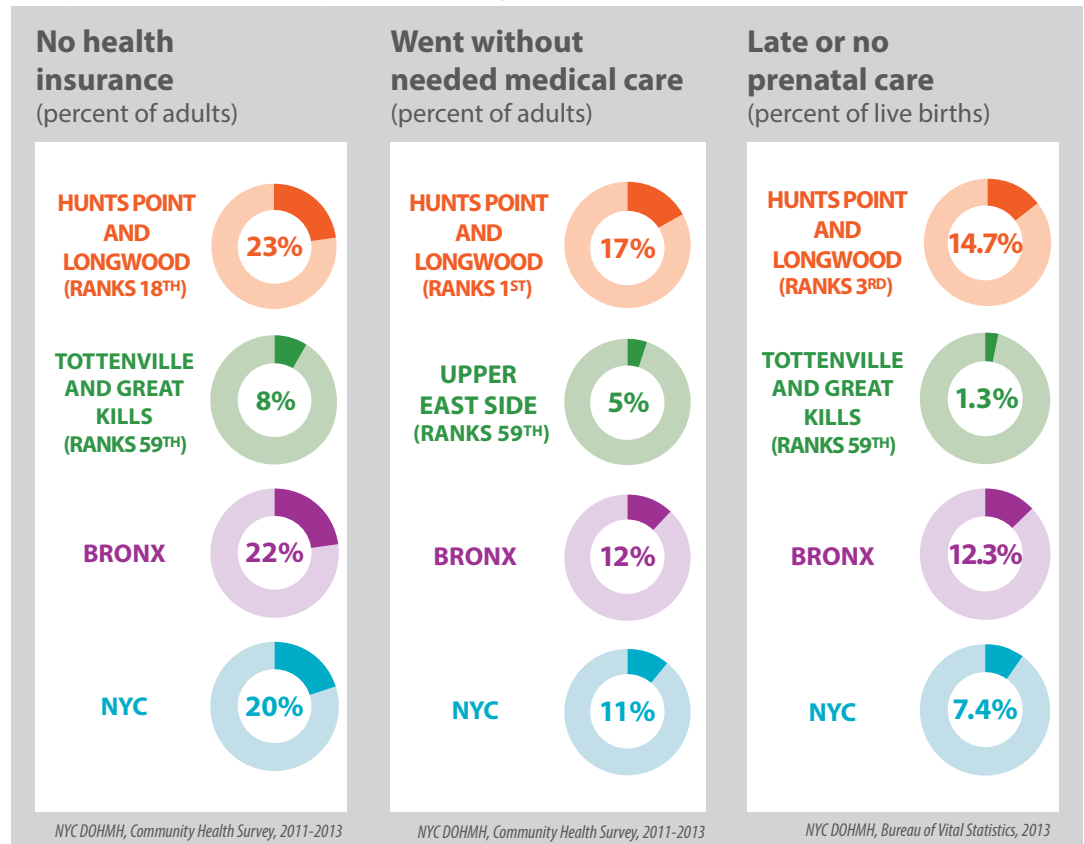
HEALTH CARE

Prior to 2014, 20% of adults in NYC had no health insurance; however, with implementation of the Affordable Care Act, this percentage decreased to 14% citywide in 2014. A similar decrease is expected in **Hunts Point and Longwood**.

HPV infection causes cancers that can be prevented by the HPV vaccine. Boys and girls should receive the vaccine at 11 to 12 years of age, prior to HPV exposure and when the vaccine is most effective.

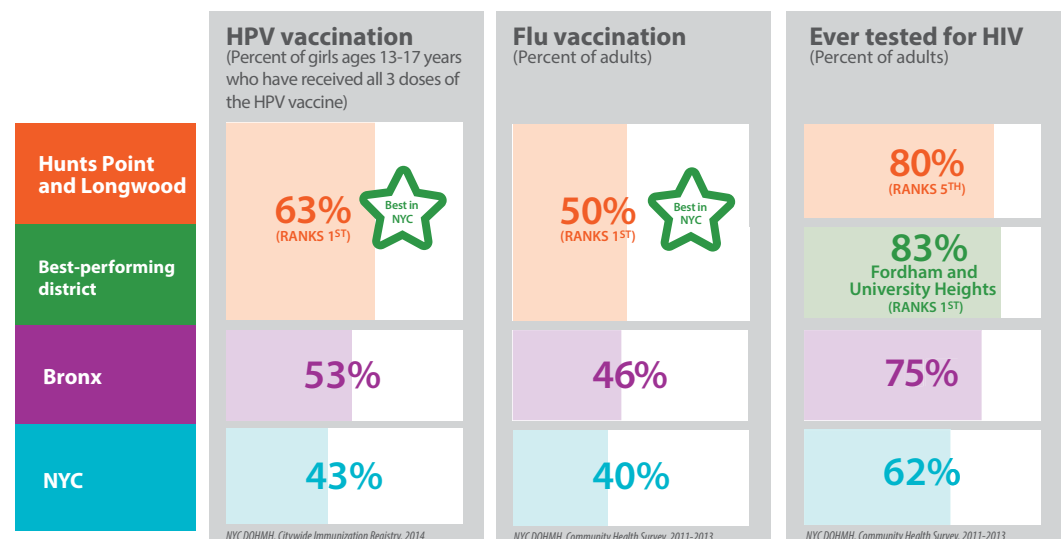
Access to health care

A lack of quality health care can lead to negative health outcomes and more intensive treatment, such as avoidable hospitalizations. In **Hunts Point and Longwood**, almost one in four adults has no health insurance, and one in six goes without needed medical care, the highest rate in the city. The rate of late or no prenatal care in **Hunts Point and Longwood** is the third-highest in the city.



Prevention and screening

Compared with teens citywide, teenaged girls from **Hunts Point and Longwood** are more likely to receive the full human papillomavirus (HPV) vaccine series. **Hunts Point and Longwood** adults are more likely to get tested for HIV than adults citywide. **Hunts Point and Longwood** adults rank the highest in NYC in receiving flu vaccinations.



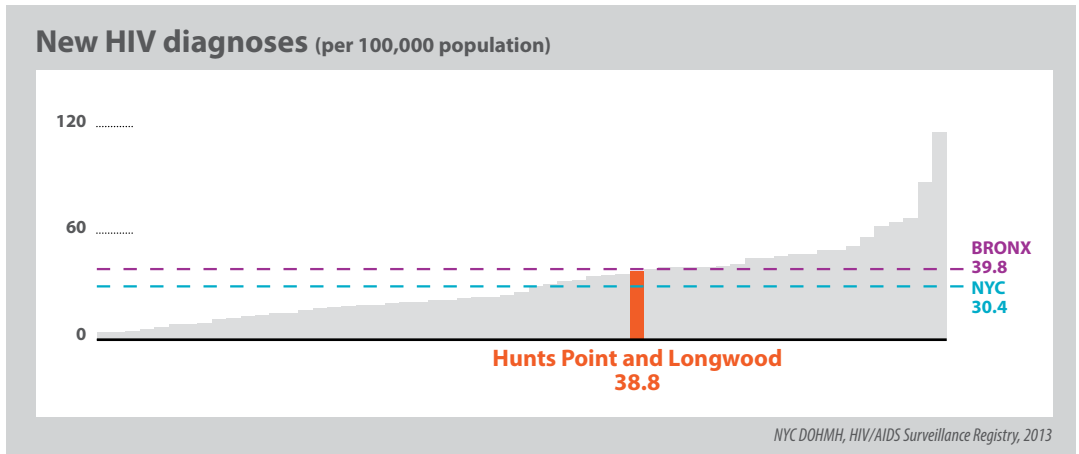


HEALTH OUTCOMES

People diagnosed with HIV who enter care and start antiviral medications live longer, healthier lives and are less likely to transmit HIV.

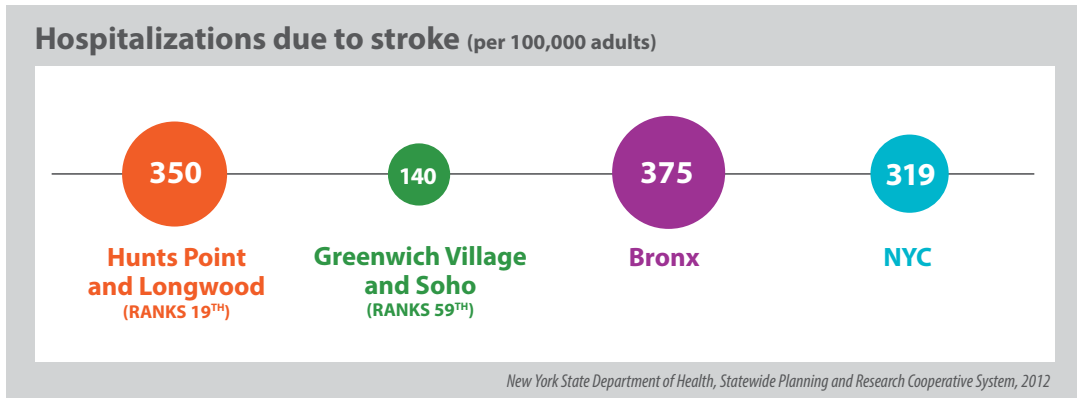
New HIV diagnoses

Some people with HIV do not know that they are infected. Getting diagnosed is the first step in the treatment and care of HIV. **Hunts Point and Longwood** ranks twenty-second in the rate of new HIV diagnoses.



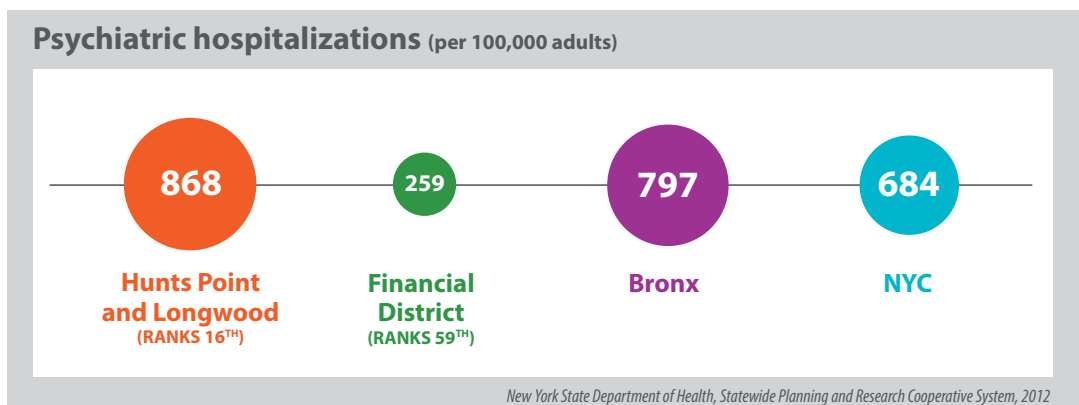
Stroke

High blood pressure is the leading risk factor for stroke and the most important to control. The rate of stroke hospitalizations in **Hunts Point and Longwood** is similar to the Bronx and citywide rates.



Mental health

Variations in hospitalization rates may reflect differences in rates of illness, access to health care and other social and cultural factors. The rate of adult psychiatric hospitalizations in **Hunts Point and Longwood** is similar to the Bronx average, but higher than the overall NYC rate.





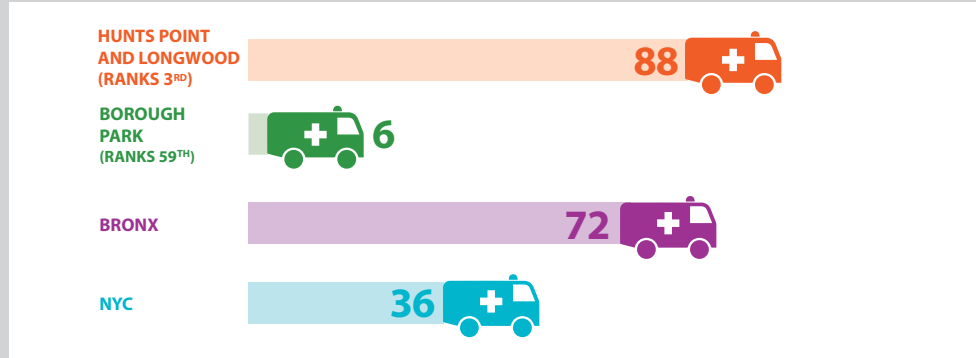
HEALTH OUTCOMES

Certain hospitalizations for asthma and diabetes can be prevented by high-quality outpatient care and are known as “avoidable hospitalizations.”

Child asthma

Many hospitalizations for asthma among children could be prevented by addressing housing-related exposures to asthma triggers, including cockroaches, mice and secondhand smoke. Good medical management can prevent asthma symptoms. **Hunts Point and Longwood** has the third-highest asthma hospitalization rate among children ages 5 to 14 in the city, more than twice the citywide rate.

Child asthma hospitalizations (per 10,000 children ages 5-14)

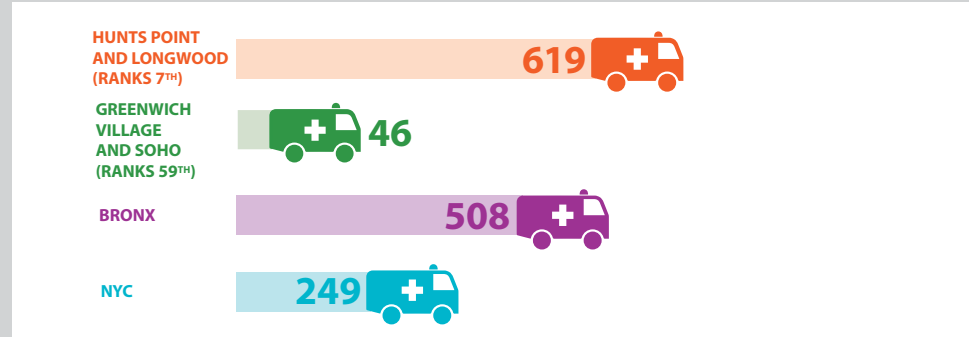


New York State Department of Health, Statewide Planning and Research Cooperative System, 2012-2013

Adult hospitalizations for asthma

The rate of avoidable adult asthma hospitalizations in **Hunts Point and Longwood** is more than twice the citywide rate.

Avoidable asthma hospitalizations (per 100,000 adults)

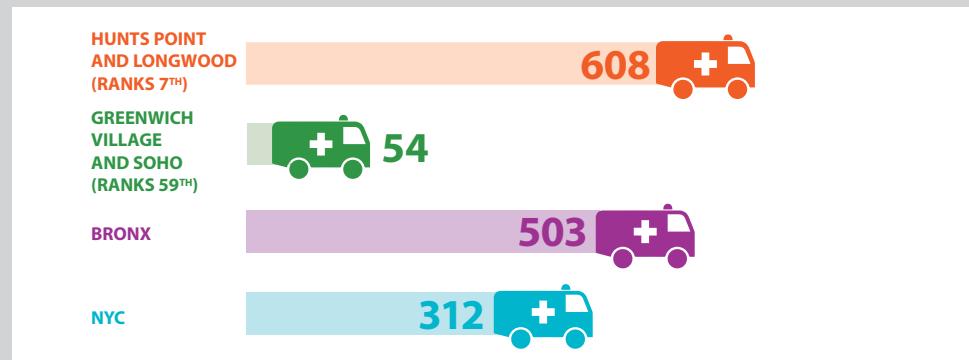


New York State Department of Health, Statewide Planning and Research Cooperative System, 2012

Adult hospitalizations for diabetes

The rate of avoidable adult diabetes hospitalizations in **Hunts Point and Longwood** is almost twice the citywide rate.

Avoidable diabetes hospitalizations (per 100,000 adults)



New York State Department of Health, Statewide Planning and Research Cooperative System, 2012



HEALTH OUTCOMES

Drug use is the fifth most common cause of death in **Hunts Point and Longwood**, but it is only the ninth leading cause citywide.

Leading causes of death

The top causes of death for residents of **Hunts Point and Longwood**, as for most New Yorkers, are heart disease and cancer. Death rates due to drug use and HIV are more than twice the citywide rates.

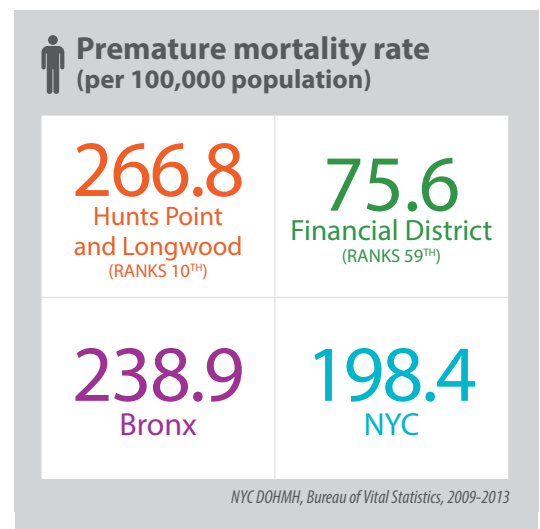
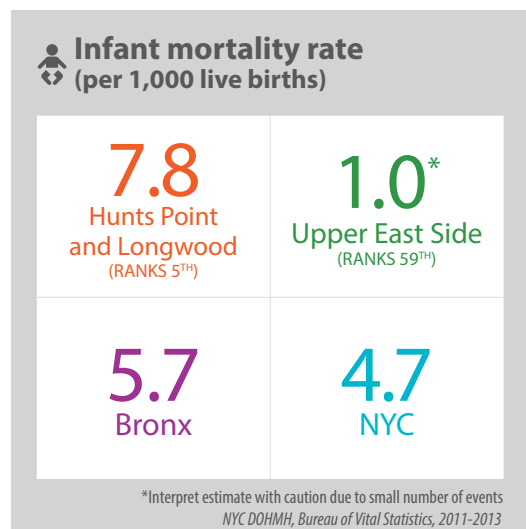
Hunts Point and Longwood			New York City	
RANK	CAUSE: NUMBER OF DEATHS	DEATH RATE	RANK	DEATH RATE
1	Heart disease: 384	204.2	1	202.6
2	Cancer: 292	150.8	2	156.7
3	Flu/pneumonia: 55	29.2	3	27.4
3	Diabetes mellitus: 55	28.6	4	20.6
5	Drug-related: 45	18.7	9	8.6
6	Lower respiratory diseases: 43	22.0	5	19.8
7	HIV: 42	17.3	10	8.4
8	Stroke: 34	18.1	6	18.8
9	Accidents (excluding drug poisoning): 32	14.0	7	11.8
10	Homicide: 29	10.5	14	5.7

NYC DOHMH, Bureau of Vital Statistics, 2009-2013

Infant mortality and premature death

Despite a decrease in infant mortality across the city, the rate in **Hunts Point and Longwood** is still more than seven times the rate in the Upper East Side; it is the fifth-highest rate in the city.

Disparities in premature death (death before the age of 65) also persist among neighborhoods. The rate of premature death in **Hunts Point and Longwood** is higher than the Bronx and citywide rates and more than three times the rate in the Financial District.





NOTES

A complete dataset including numbers, rates, rankings and confidence intervals, as well as definitions and complete citations, can be found online by going to nyc.gov and searching "Community Health Profiles".

Technical notes

Neighborhood Definitions and Rankings

The 59 Community Districts (CDs) were established citywide by local law in 1975. For a complete listing of all CDs and their boundaries, go to nyc.gov/html/dcp/html/neighbor_info/nhmap.shtml. The CDs correspond to New York City (NYC) Community Boards, which are local representative bodies. The names of neighborhoods within CDs are not officially designated. The names used in this document are not an exhaustive list of all known neighborhood names within this area.

CDs were ranked on every indicator. If two CDs had the same value, they were considered to be tied and were given the same rank.

For American Community Survey (ACS) indicators, data were available by Public Use Microdata Areas (PUMAs), which are aggregated Census tracts designed to approximate CDs. For Housing and Vacancy Survey (HVS), data were available by sub-borough areas. The U.S. Census Bureau combined four pairs of CDs in creating these PUMA or sub-borough areas to improve sampling and protect the confidentiality of respondents. These pairs are Mott Haven/Melrose (BX 01) and Hunts Point/Longwood (BX 02) in the Bronx, Morrisania/Crotona (BX 03) and Belmont/East Tremont (BX 06) in the Bronx, the Financial District (MN 01) and Greenwich Village/Soho (MN 02) in Manhattan and Clinton/Chelsea (MN 04) and Midtown (MN 05) in Manhattan. For these four areas, the same estimate was applied to both CDs that comprised the PUMA or sub-borough area for data from ACS and HVS. For NYC Department of Health and Mental Hygiene (DOHMH) Community Health Survey (CHS) data, these same pairs of CDs were combined and the same estimate applied to both CDs in the pair.

Analyses

For most data, 95% confidence limits were calculated for neighborhood, borough and NYC estimates. If these ranges did not overlap, a significant difference was inferred. This is a conservative measure of statistical difference. Only robust findings found to be statistically significant are discussed in the text. In addition, most estimates were evaluated for statistical stability using the relative standard error (RSE). Those estimates with an RSE greater than 30% are flagged as follows: "Interpret estimate with caution due to small number of events or small sample size."

Where noted, estimates in this report were age standardized to the Year 2000 Standard Population.

Data Sources

U.S. Census/American Community Survey (ACS): The U.S. Census calculates intercensal population estimates which were used for overall population, age, race and ethnicity indicators. The ACS is an ongoing national survey conducted by the U.S. Census Bureau. Indicators include limited English proficiency, foreign born percentage, adult educational attainment, poverty, unemployment and rent burden. Three-year estimates (2011-2013) are used to improve reliability of the data.

NYC DOHMH Community Health Survey (CHS): The CHS is an annual random-digit-dial telephone survey of approximately 9,000 adults in NYC. Indicators include self-reported health, smoking, average daily sugary drink consumption, fruit and vegetable consumption, physical activity, obesity, diabetes, insurance coverage, went without needed care, flu vaccination and HIV testing. A combined-year dataset (2011-2013) was used to increase statistical power, allowing for more stable analyses at the Community District level. Community District level estimates were imputed based on participant's ZIP code, age, race and ethnicity, sex and borough of residence. All indicators are age-adjusted; however crude estimates and rankings are available online in the complete dataset.

NYC DOHMH Vital Statistics: The Bureau of Vital Statistics analyzes data that it collects from hundreds of thousands of birth and death certificates issued in NYC each year by the Bureau of Vital Records. Indicators include preterm births, teen births, prenatal care, leading causes of death, infant mortality, premature mortality, avertable deaths and life expectancy. For some indicators, data sources were combined across three, five or ten years to increase statistical stability and average annual rates are presented. For this reason, these statistics may differ from the presentation in the "Summary of Vital Statistics" reports from the Bureau of Vital Statistics, NYC DOHMH. All rates are shown as crude rates, except leading causes of death and premature mortality rates, which are age-adjusted.

New York State (NYS) Department of Health Statewide Planning and Research Cooperative System (SPARCS): SPARCS is a statewide comprehensive all payer data reporting system established in 1979 currently collecting patient level detail on patient characteristics, diagnoses and treatments, services and charges for each hospital inpatient stay and outpatient visit (ambulatory surgery, emergency department and outpatient services); and each ambulatory surgery and outpatient services visit to a hospital extension clinic and diagnostic and treatment center licensed to provide ambulatory surgery services. Indicators include non-fatal assault



NOTES

hospitalizations, alcohol-related hospitalizations, drug-related hospitalizations, child asthma hospitalizations, avoidable adult asthma hospitalizations, avoidable adult diabetes hospitalizations, psychiatric hospitalizations and stroke hospitalizations. Hospitalization data are defined according to International Classification of Disease Clinical Modification, Version 9 (ICD-9-CM) codes. Most of these hospitalization indicators show 2012 data, updated in December 2014. For child asthma hospitalizations and non-fatal assault hospitalizations, data sources were combined across two and three years respectively to increase statistical stability and average annual rates are presented.

All indicators are age-adjusted, except child asthma hospitalizations, which is age-specific.

NYC Housing and Vacancy Survey (HVS): HVS data from 2011 were used to estimate the percent of renter-occupied homes with at least one maintenance issue (defect). Data were obtained from the NYC Housing Preservation and Development Report: Housing New York City 2011.

NYC Community Air Survey (NYCCAS): 2013 annual averages of micrograms of fine particulate matter per cubic meter were calculated from air samples collected at specific NYCCAS monitoring sites and were incorporated into a statistical model that predicted pollutant concentrations.

NYC Department of Consumer Affairs: 2014 tobacco retail density data were analyzed by the NYC DOHMH Bureau of Chronic Disease Prevention and Tobacco Control.

NYS Department of Agriculture and Markets: Based on data from 2014, the supermarket square footage rate was analyzed by the NYC Department of City Planning and the NYC DOHMH Bureau of Epidemiology Services.

NYC Department of Education: Elementary school absenteeism data for the 2013-14 school year were analyzed from FITNESSGRAM data by the NYC DOHMH Bureau of Epidemiology Services.

NYC Department of Corrections: The average daily population of incarcerated persons in NYC jails ages 16 and older by CD of last known residence. Based on NYC Department of Corrections (DOC) bi-weekly in-custody files from July 1 to Oct 9, 2014.

NYC DOHMH Citywide Immunization Registry: 2014 HPV vaccination data were analyzed by the NYC DOHMH Bureau of Immunization.

NYC DOHMH HIV/AIDS Surveillance Registry: New HIV diagnosis data for 2013 were analyzed by the NYC DOHMH Bureau of HIV/AIDS Prevention and Control.

Acknowledgements

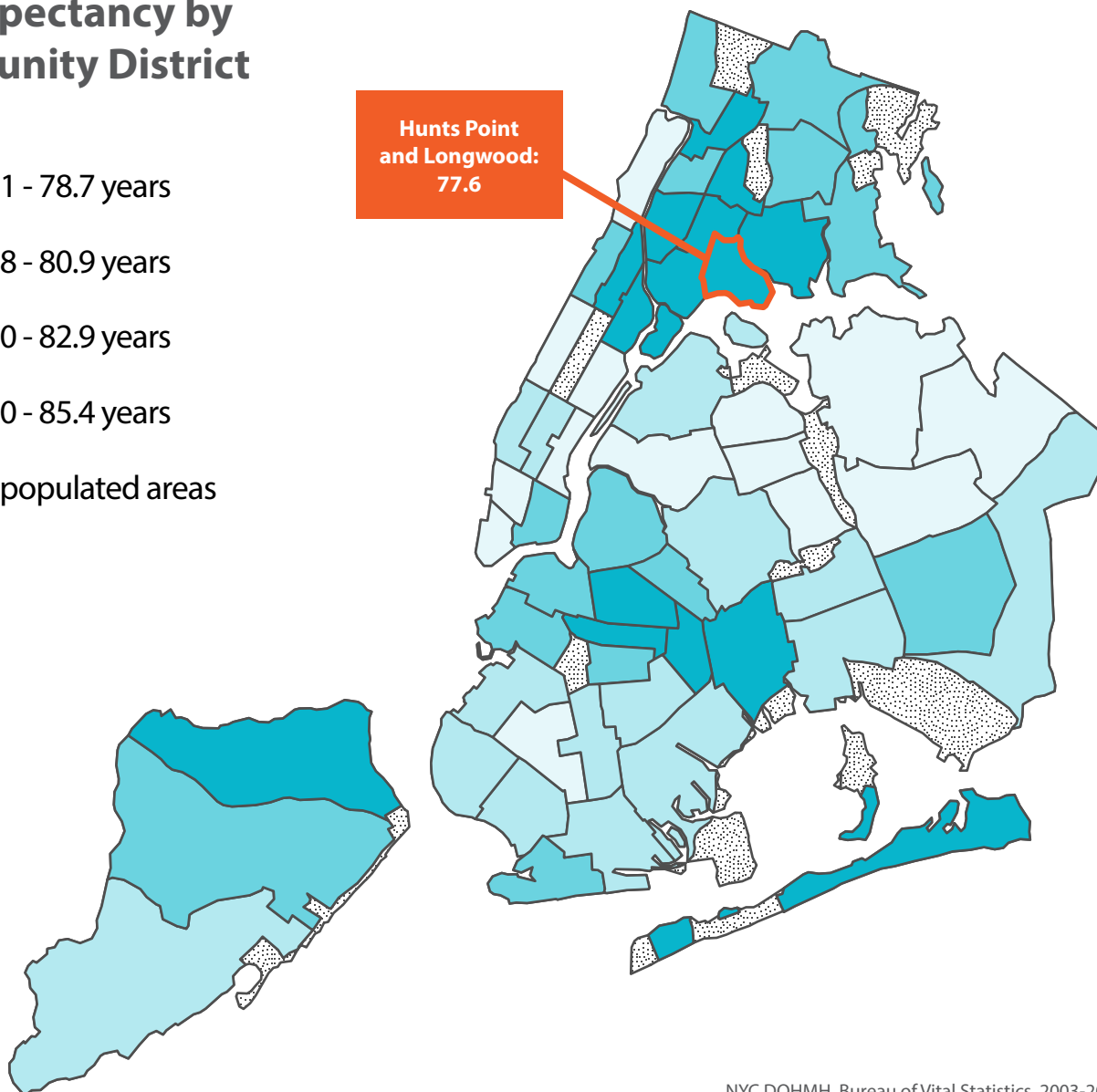
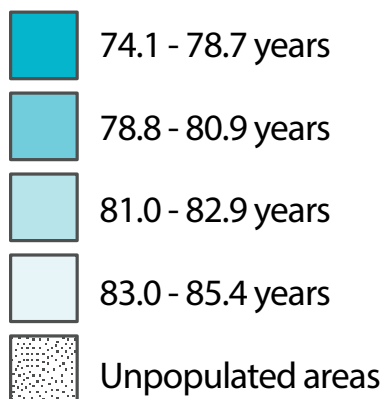
Thank you to all the individuals who contributed to these reports: Sonia Angell, George Askew, Katherine Bartley, Gary Belkin, Angelica Bocour, Sarah Braunstein, Shadi Chamany, Nancy Clark, Sarah Conderino, Karen Crowe, Gretchen Culp, Antonio D'Angelo, Sophia Day, Paloma de la Cruz, Karen Eggleston, Jeffrey Escoffier, Shannon Farley, Ana Garcia, Victoria Grimshaw, Fangtao He, Mary Huynh, Steven Immerwahr, John Jasek, Jillian Jessup, Kimberly Johnson, Sarah Johnson, Hetali Jokhakar, Dan Kass, Kevin Konty, Ram Koppaka, Hillary Kunins, Amber Levanon Seligson, Veronica Lewin, Wenhui Li, Nneka Lundy De La Cruz, Thomas Matte, Karen Aletha Maybank, Wendy McKelvey, Katharine McVeigh, Aaron Mettey, Chris Miller, Christa Myers, Deborah Nagin, Cathy Nonas, Christina Norman, Jennifer Norton, Carolyn Olson, Emiko Otsubo, Michelle Paladino, Denise Paone, Vassiliki Papadouka, Hilary Parton, Grant Pezeshki, Michael Porter, Susan Resnick, Rebekkah Robbins, John Rojas, Slavenka Sedlar, Tejinder Singh, Laura Smith, Travis Smith, Ariel Spira-Cohen, Catherine Stayton, Monica Sull, Ying Sun, Arpi Terzian, Elizabeth Thomas, Ellenie Tuazon, Gretchen Van Wye, Jay Varma, Verliene Wade, Sarah Walters, Catherine Wang, Kennedy Willis, Ewa Wojas, Ricky Wong, Joy Xu, Brian Yim and Jane Zucker.

In collaboration with:



SARAH TAY CREATIVE

Life Expectancy by Community District



NYC DOHMH, Bureau of Vital Statistics, 2003-2012

Contact Information:

For reports on the other 58 Community Districts, please visit nyc.gov and search "Community Health Profiles" or email: profiles@health.nyc.gov

Copyright©2015 The New York City Department of Health and Mental Hygiene

NYC Community Health Profiles feature information about 59 neighborhoods in New York City.

Suggested citation:

King L, Hinterland K, Dragan KL, Driver CR, Harris TG, Gwynn RC, Linos N, Barbot O, Bassett MT.

Community Health Profiles 2015, Bronx Community District 2: Hunts Point and Longwood; 2015; 14(59):1-16.