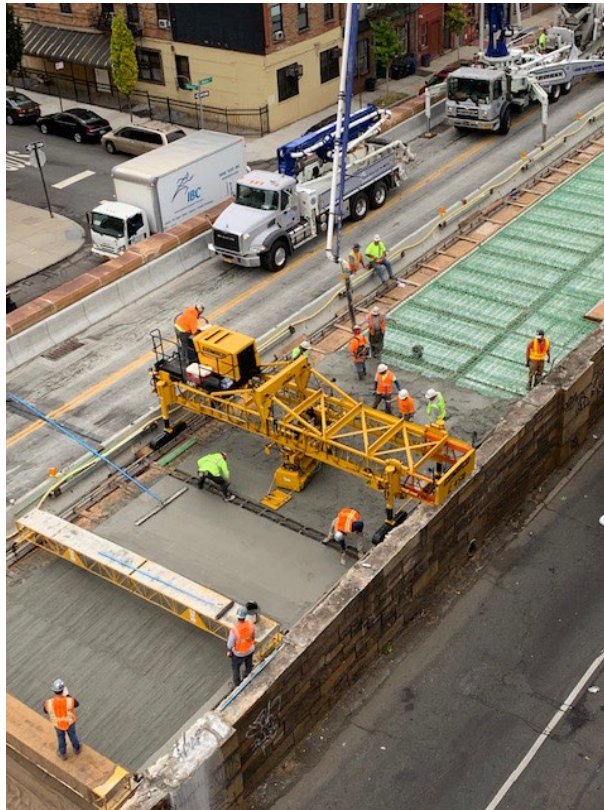


# 2020 NYC DOT Bridges & Tunnels Annual Condition Report





**NYC DEPARTMENT OF TRANSPORTATION  
DIVISION OF BRIDGES  
2020 BRIDGES AND TUNNELS ANNUAL CONDITION REPORT**



Atlantic Avenue Bridge Over LIRR Atlantic Avenue.

**Eric Adams, Mayor**

**Ydanis Rodriguez, Commissioner**

**Margaret Forgione, First Deputy Commissioner**

**Paul Schwartz P.E., Deputy Commissioner**

**Kevin McNulty, P.E., Interim Associate Deputy Commissioner, Maintenance, Inspections & Operations**

**David Dunn, P.E., Assistant Commissioner, Bridge Capital Design & Construction**

**Joannene Kidder, Chief Staff Manager/Executive Director, Community Affairs**

## Contents

---

---

<b>2020 Division Overview</b>	<b>2</b>
<b>2020 Bridge Inventory</b>	<b>10</b>
<b>Rating Note</b>	<b>24</b>
<b>Bridge Inventory Sorted by Feature Carried</b>	<b>25</b>
<b>2020 Tunnel Inventory</b>	<b>45</b>
<b>Staten Island Culverts</b>	<b>46</b>

As an integral part of New York City's Department of Transportation, the Division of Bridges has a two-fold mission: to maintain an optimal transportation network by ensuring smooth mobility on the city's bridges, and to ensure the safety of the public.

The New York City Department of Transportation's Division of Bridges is comprised of four major bureaus. The **Deputy Commissioner** is responsible for formulating policy and providing executive direction. He oversees all aspects of the design, construction, rehabilitation and reconstruction, maintenance, operation, and administration of the 799 bridges, 4 vehicular tunnels, and 53 culverts presently under the jurisdiction of the New York City Department of Transportation (NYCDOT). In addition to broad supervision, the Chief Bridge Officer also provides overall executive and administrative direction for the Division of Bridges, and ensures that all contractors are promptly paid.

Reporting to the Deputy Commissioner, the **Community Affairs Unit** maintains liaison with all stakeholders: elected officials, community boards, community groups, and civic/neighborhood associations. The Unit takes a proactive approach in addressing design issues and coordinating construction by working with communities throughout the life of a project. The unit is committed to strategic community interaction that considers the cultural and linguistic diversity of the city and employs a variety of communication tools including social media to ensure the delivery of timely information. This enables the Division to proceed with its capital program as well as on-going maintenance projects with community input and full awareness. Partnering with stakeholders creates opportunities for success.

The **Bureau of Bridge Maintenance, Inspections and Operations** employs 440 engineering, professional, administrative, and skilled trades employees in the maintenance and smooth operation of New York City's elevated infrastructure, and in specialized skilled trades and contract supervision functions. It is composed of seven sections:

The **Flag Engineering** section is an engineering group that reviews, routes, and tracks hazardous or potentially hazardous safety and structural conditions ("flags") in or on the city's 799 bridges and 4 vehicular tunnels. The Flags staff is on call 24 hours a day to respond to bridge emergencies. The section can be alerted to flag conditions by city and state inspectors and other sources, such as the Communications Center. All conditions undergo an evaluation involving review of the flag report and photographs of the condition, and, if necessary, a visit to the site. Subsequently, a "flag packet" describing the type of repair or response that is required is created and routed to an appropriate group, in-house or contractor, for elimination. The section monitors the status of each flag, reporting on all activities on a monthly basis.

**Bridge and Tunnel Operations** is responsible for operating the 23 City-owned movable bridges that span city waterways. This section operates under a variety of federal mandates that call for 24-hour coverage at many locations; its mission is to provide safe and expedient passage to all marine and vehicular traffic under and on movable bridges. In calendar year 2020, Bridge Operations effected a total of 5,112 openings, 4,343 of which allowed 7,665 vessels to pass beneath the bridges.

The remaining 769 openings were for operational and maintenance testing. The section also operates the city's mechanically-ventilated tunnels, performing electrical maintenance and monitoring of the tunnels' electrical and mechanical systems.

The **Bridge Repair** section is composed of two major units. *Bridge Repair* performs repairs to resolve flagged conditions. Flag repairs include structural and safety work, such as the repair of steel members damaged by corrosion or accident impact, the replacement of box beams and bridge railings, the replacement of roadway gratings, repairs to traffic control devices, brick and masonry repairs, concrete deck repairs, and the rebuilding of wooden walkways. Much of this work is performed in the off-hours, either to accommodate traffic or in response to emergencies.

This section also rehabilitates and replaces damaged, worn, or defective components whose failure can affect service. This type of work, known as corrective repair, primarily involves the electrical, mechanical and operational control systems for the twenty-three movable bridges, as well as the travelers (movable underdeck access platforms) on the four East River bridges. The Bridge Repair Section is also responsible for the lubrication of the movable bridges as well as the mechanical components and the main cables of the East River bridges.

The *East River and Movable Bridges Preventive Maintenance* unit administers federal funds for selected preventive maintenance activities on the East River and movable bridges. This unit is also responsible for highly specialized work such as the lubrication of cables inside anchorages, cleaning and lubrication of solid rod suspender bearings, operation and maintenance of travelling platforms on the East River bridges, and selected projects to replace the wearing surface on suspended spans. Work is performed with a combination of in-house and contracted personnel.

The engineers and inspectors of the ***When and Where Unit*** supervise the contractors' repairs of structural and safety flags citywide under both marine and general repair contracts, as well as a capital contract. The use of these contracts allows the unit greater flexibility in deploying the contractors' resources as necessary, and in obtaining a variety of construction equipment and materials that are not readily available to in-house forces. In addition, the unit responds to bridge emergencies during both working and off-hours, providing on-site inspection to verify field conditions, taking measurements for repairs and providing emergency lane closures. Some of the repair work is performed during night hours to reduce the impact on traffic and on public safety.

The ***Preventive Maintenance*** section is a vital part of the overall bridge program. This section is responsible for functions including debris removal, mechanical sweeping, pothole repairs, participating in the removal of homeless encampments, and drain cleaning; as well as emergency response, such as snow removal, oil/cargo spills, overpass hits, and assisting with expansion joint and through-hole repairs. The section also performs some corrective repair work such as asphalt deck repairs, sidewalk patching, and fence and guide rail repairs. Preventive Maintenance is responsible for conducting the Department's anti-icing operations on the four East River bridges.

The ***Bridge Painting*** Unit maintains the protective coating of the City's bridges. It is divided into two programs, the in-house (expense-funded) program and the capital program. The capital program oversees total paint removal and application of new paint, performed by contractors; this is done at twelve-year intervals on bridges measuring more than 100,000 square feet of painted area, and bridges over railroads. In-house personnel provide the inspection services on East River Bridge preventive maintenance contracts for quality control purposes. The in-house program is responsible for full steel painting of bridges measuring less than 100,000 square feet, and bridges that are not over railroads. This includes local surface preparation of deteriorated areas and overcoating of the entire bridge. In addition, the in-house program is responsible for salt splash/spot painting, performed at four-year intervals within the twelve-year full-steel painting cycle. This includes local surface preparation of deteriorated areas and overcoating of the steel areas within six feet of the joints and abutments.

The in-house program also performs graffiti removal on all NYC DOT bridges and 24 New York State highways, responds to emergency flag repairs alongside the in-house repair forces (to perform surface preparation prior to, and painting upon completion of, the steel work), assists Agency personnel in snow removal from the East River Bridges and priority bridge overpasses, and performs environmental clean-up after the repair forces finish their repair work.

The ***Bridge Inspections and Bridge Management*** section performs three essential functions: *Bridge Inspections* (including *In-Depth Inspections*), *Bridge Management*, and *Research and Development*.

The *Inspections Unit* inspects the city's bridges in accordance with state and federal standards; monitors bridge conditions with a high hazard potential, such as temporary repairs, outstanding flags, and fire hazards; responds to emergency inspection requests from NYCDOT and external sources; recommends repairs and remedial measures for hazardous conditions; generates flag and inspection reports for the Division; engages in special programs such as non-destructive monitoring of sensitive bridge components by advanced techniques; supervises inspections by consultants working for the Division; conducts inspections and inventories of expansion joints; and inspects non-structural cladding.

*In-Depth Inspections* are more detailed in scope than the federally-mandated biennial and interim inspections. Their findings can be used for advanced structural analysis, ultimately resulting in a legally binding load-rating of the structure. Two in-depth inspections teams are currently staffed and fully equipped. To that end, the Bridge Management Unit acquired a LIDAR high-definition laser scanning system. The system supplements In-Depth Inspection reports with high-precision 3-D laser scans of bridges. The scans can be used to verify existing drawings or provide as-built drawings where none currently exist. Once the scans are processed, 3D CAD models can be generated. The 3D models can then provide cross sectional details, accurate vertical clearance measurements or even before and after scans for bridges that are frequently damaged by impacts from trucks. The first in-depth inspection reports have already been transmitted to the Load Rating Unit within the Bureau of Engineering Review and Support.

The *Bridge Management Unit* develops and maintains the database for the City's bridge inventory, condition ratings, and inspection information. The unit is also responsible for maintaining records of privately-owned bridges in the City. The database is the source of information used in a variety of reports, including the present Bridges and Tunnels Annual Condition Report. This unit uses the bridge and span condition database to determine current and future needs for bridge rehabilitation, bridge component rehabilitation, flag forecasting, inspections and monitorings.

This Section is also responsible for investigating new materials and methods to improve existing bridge conditions. It sponsors a series of lectures by experts on subjects relevant to design, construction, and maintenance, such as seismic retrofitting of bridges, salt substitutes, cathodic protection against corrosion, concrete patching materials, new paint strategies, non-destructive bridge testing, and deck resurfacing. The unit also participates in research programs with interested transportation and infrastructure entities. In conjunction with the Port Authority, MTA Bridges and Tunnels, and NYS Bridge Authorities, it sponsored a report on suspension bridge cables that led to a federal project for the entire United States. A number of articles on bridge management are published by the unit in technical journals in the United States, Japan, France, and elsewhere. This section created the system for generating bridge inspection reports with portable computers; a similar system is now being adopted by the NYSDOT.

The overall mission of the Bureau of Bridge Maintenance, Inspections and Operations is to maintain the structural integrity of elevated structures and tunnels and to prolong their life by slowing the rate of deterioration. While our objective may be seen as "maintaining the status quo" of the infrastructure, we continue to take a new look at our methods, procedures, and general focus as we formulate our operational plans for the next several years.

As more bridges are rehabilitated, it becomes incumbent upon us to protect the government's investment in the infrastructure by developing and implementing a more substantive preventive maintenance program to keep these bridges in good condition.

The Associate Deputy Commissioner for Bridge Maintenance, Inspections and Operations also acts as the **Deputy Commissioner**, assuming the responsibilities of the Deputy Commissioner in that person's absence.

The **Bureau of Bridge Capital Design & Construction** is responsible for carrying out major capital improvement projects on New York City-owned bridges and tunnels throughout the five boroughs. From the City's 799 structures, the Department prioritizes selections for bridge projects that may include extensive reconstruction or complete replacement. The budget of this program in the current 10-Year Plan exceeds 5 billion dollars and consists of a combination of Federal, State and City funding. The Bureau manages the design and construction activities for these projects by contracting with private engineering and construction firms. Engineering firms provide Design, Construction Support and Resident Engineering/Inspection services under the direction, supervision and leadership of our staff. Construction firms serve as the builders for the projects. The Bureau has a staff of about 140 engineering and administrative professionals and is organized into the following sections:

The **East River Bridges Section** conducts projects on the four bridges that span the East River. These iconic long-span bridges carry thousands of vehicles a day and are among the City's most valued assets. The three suspension bridges consist of the Brooklyn Bridge, Manhattan Bridge and Williamsburg Bridge which span between lower Manhattan and Brooklyn. The fourth of the East River Bridges is the Ed Koch - Queensboro Bridge, a steel cantilevered truss that crosses from midtown Manhattan to Queens.

The **Movable Bridges Section** manages projects on the 23 movable bridges along with 4 tunnels. The movable bridges open and close for passing marine vessels and come in a number of varieties such as bascule, vertical lift, swing span and retractable. These bridges are situated along waterways in Manhattan, Brooklyn, Queens and the Bronx. The four tunnels that fall under DOT jurisdiction are located within Manhattan at Park Avenue, First Avenue, Battery Park and West Street.

The **Roadway Bridges Section** is responsible for projects on the more than 700 City-owned fixed span bridges located throughout the five boroughs. These range from short-span pedestrian bridges to long viaducts carrying expressways. The Roadway Bridges Section is further organized into two groups based on boroughs. Manhattan and Brooklyn form one of the groups while the other consists of the Bronx, Queens and Staten Island.



The **Component Rehabilitation Section** carries out projects on select deficient portions of bridges. The work is intended to focus on discreet elements rather than being a comprehensive overhaul. These projects are planned for bridges that have some substandard components but are otherwise in fair to good condition in order to extend their service life before the next capital rehabilitation project is required. Typically, several bridges can be combined under one contract so that improvements can be compiled efficiently.

The **Specialty Engineering/Emergency Contracts Section** provides technical expertise and versatility in categories such as declared emergencies, design-build contracts and other diverse work. Specialty Contracts may include projects that do not fit neatly into defined categories such as the reconstruction of ferry terminal ramps or a promenade spanning over a highway. This highly adaptable group has also been called in on more conventional bridge reconstruction projects as well when circumstances arise.

The **Engineering Review and Support Bureau** is responsible for providing Division-wide engineering support services. The following areas make up this Bureau: ***In-House Design, Engineering Support, Engineering Review, and Quality Assurance***.

***In-House Design*** staff (comprised of the Structural, Electrical, and CADD Groups) perform difficult and technically complex work in the fields of structural/seismic design and street/highway design related to bridges, prepare plans, specifications, and estimates for bridge rehabilitation/replacement projects that enable the Division to restore bridges considered “structurally deficient,” to a “very good” condition rating. This Unit also handles urgent Division projects, as well as special repair projects of the **Bureau of Bridge Maintenance, Inspections and Operations**.

The Electrical Group reviews and/or prepares contract documents for the electrical and street lighting work for all projects in the Division’s capital program. They further review plans and specifications prepared by consultants and review test results of electrical systems conducted by vendors on the movable bridges.

The **Engineering Support Section** is comprised of four units: *Specifications, Survey, Records Management, and Special Projects*.

The *Specifications Unit* prepares and reviews contract bid documents and specifications for all Federal and City-funded, private developer, City-let in-house and consultant-designed bridge and various other construction projects, processes the contracts for bidding, after ensuring that they comply with the City, New York State and Federal standards, prepares, reviews, and transmits advertisement packages, addenda, maintains and updates City-let bridge construction boiler plates in compliance with FHWA and NYSDOT Engineering bulletins and instructions, and updates and maintains an inventory of all NYC and NYS special specifications used in bridge and other construction projects. This Unit approves and issues item numbers for newly written special specifications for the city funded projects, and enters new items in the Contract and Project Management System Unit item catalogue. In addition, they review contract drawings for compliance with contract bid proposal books.

The *Survey Unit* performs field surveys and visual inspections of bridges and retaining walls, monitoring of cracks and longitudinal and transverse movements in bridge structures as well as foundation settlement. This Unit surveys bridge girder alignments and twisted movements in steel girders and floor beams due to damage by oversized trucks or fires, prepares and verifies elevations in the field to find existing vertical clearances of bridge structures, and performs various field feasibility studies in bridge construction projects for planning purposes.

The *Records Management and Electronic Media Unit* establishes drafting guidelines and digital media standards for the preparation and archiving of contract plans. It reviews design contract plans, as-built plans, and shop drawings, in printed format as well as PDF and CAD digital formats for compliance with such guidelines and standards, and provides technical guidance to drawing preparers including the In-House Design group, consultants, and contractors. This unit also maintains an as-built drawing database for city-owned and maintained bridges, and regularly updates it with new as-built plans as they become available after project closing. It also responds to requests for as-built plans from in-house groups, City and State agencies, consulting firms, and private developers, following established drawing security protocols.

The *Special Projects Unit* reviews contract bid documents and specifications for public and private agencies to ensure compliance with City, State and Federal standards and guidelines.

The ***Engineering Review Section*** consists of two major groups:

**Group 1** reviews bridge design projects, retaining wall projects, and bridge hold permit applications.

Bridge design project review involves the review of preliminary and final design plans, Design Approval Documents (DAD), structural/geotechnical/utilities design calculations in compliance with NYSDOT, AASHTO, and NYCDOT standards and specifications, and cost estimates. These personnel are also involved in managing ESA Task Orders, consultant payments, and other agency/private developer projects.

The Group manages the NYC DOT-owned retaining walls database, manages the consultant program for the periodic inspection of all the retaining walls Citywide, and files inspection reports to NYC Department of Buildings annually. The retaining walls that are in fair to poor condition are brought into the capital plan for rehabilitation. The design and construction is managed by the New York City Department of Design and Construction. The Project Capital Engineering Group from NYC DOT oversees the budgeting and DDC's work.

The Group is also involved in the review of construction permit applications, specifically those that come through BridgeHold for any proposed construction work within 100 feet of any City-owned bridge structure, tunnel or retaining wall.

**Group 2** is responsible for project scope development and budgeting, overweight truck permit review, land use planning, and load rating.

Project scope development involves the review of inspection reports, as-built drawings, and structural condition ratings, the performance of field inspections to develop scopes of work for the rehabilitation of deficient bridges, and the initiation of the procurement of Design Consultant contracts. These personnel also review quarterly budgetary plans for bridge rehabilitation projects in coordination with the Bureau of Bridge Maintenance, Inspections and Operations, and the Capital Procurement and Capital Planning Sections.

Overweight Truck Permit personnel, in coordination with the Division's Truck Permit Unit, review the engineering aspects of overweight and over-dimensional truck and self-propelled crane permit applications, to ensure the safety of City owned bridges.

Land Use Planning personnel review bridge design projects with a prime focus on legal grade changes, land use, and easements, and initiate Uniform Land Use Review Procedures (ULURP) applications for legal grade changes, permanent and temporary easements, and land acquisitions for bridge projects. They coordinate with the Department of City Planning (DCP), Community Boards, the Borough President offices, and the City Planning Commission.

Load Rating personnel review As-Built plans and in-depth inspection reports. They perform load rating analyses and maintain the record of safe load-carrying capacity of the City owned bridges.

The ***Quality Assurance Section*** ensures that materials installed for the Bridge Rehabilitation Program meet contractual requirements and are incorporated in strict compliance with plans and specifications. This section operates under its own formulated Quality Assurance Plan that is based on NYSDOT requirements and procedures. Quality Assurance also has direct contracts with private inspection/testing firms. This centralized arrangement with the outside resources enables the Quality Assurance Section to deliver services required for various bridge projects in the construction phase in the most cost-effective and timely manner. The section is comprised of four specialized units: *Fabrication Engineering, Materials Engineering, Field Operations, and Environmental Engineering*.

The *Fabrication Engineering Unit* is responsible for off-site inspections of structural steel, precast/prestressed concrete bridge components, and structural timber/lumber. It directs consultants during shop drawing review, RFI review and administers the "In-Process Shop Inspection Program" for structural steel and prestressed concrete bridge components, as well as other related metal materials. The Unit achieves this task by inspecting and approving fabrication facilities, directing inspection agencies during inspections, reviewing and approving shop drawings, weld procedures, fabrication procedures, repair procedures, transportation procedures, and erection procedures. Off-site inspection at fabrication plants is accomplished through the use of resources from private inspection agencies retained by the Quality Assurance Section. The Unit also makes shop visits to resolve any urgent or complicated shop fabrication issues.

Discrepancies from the approved shop drawings and approved fabrication procedures observed in the shop by inspection firm personnel are reported to the engineers in the Unit who possess the specialized knowledge, experience and engineering judgments in the fields of structural steel and precast/prestressed concrete fabrication



to make the determination of whether or not to accept, reject or repair the material which affects the quality of constructed work valued at approximately one billion dollars yearly. The Unit follows the same technical guidelines and operates in the same fashion as the NYSDOT-Structures Unit.

The *Materials Engineering Unit* is responsible for reviewing and approving a wide variety of construction materials (other than those handled by the Fabrication Engineering Unit), by confirming compliance with the specifications through on-site and off-site inspections, sampling and testing, or manufacturer's certification. Some of the materials handled in this Unit are concrete, asphalt, soils, reinforcing steel, bridge bearings, high-strength structural steel fasteners, expansion joints, and anti-corrosion coatings.

The Unit also reviews requests to substitute contract-specified materials to ensure that those requests are well-justified and that the alternate materials are equivalent or superior, thus establishing work of uncompromised quality. The unit is also responsible for implementing the Independent Assurance Sampling and Testing (IAST) Program which ensures that the personnel involved in the inspection and testing of materials are well-trained and their testing equipment are calibrated and maintained in good working conditions so as to develop confidence in their acceptance or rejection of materials at construction sites or off-site locations.

The *Field Operations Unit* ensures that materials approved by the above two units are incorporated into the rehabilitation/reconstruction work in strict accordance with plans, specifications and acceptable construction practice. This is accomplished by overseeing all construction activities in the field, e.g., the installation of reinforcing steel, structural steel and precast concrete units, the driving of piles and caisson foundations, the placement of structural and tremie concrete, asphalt, specialized deck overlays, and shotcrete, the structural lifting operations, and the preparation of subgrade and backfilling operations. The engineers of the Unit conduct meetings prior to these operations to ensure that both consultant and contractor are apprised of the specifications requirements and that the contractor's operations are well-planned to entail quality, thus avoiding project delays resulting from the potential removal and replacement of deficient work.

The engineers of the Unit provide assistance to REI staff in the interpretation of NYSDOT specifications and the requirements of MURK to ensure that the project record is developed and maintained accordingly, thus ensuring that items of work being advanced for payments have the proper supporting documentation. Their findings, observed during construction operations and review of the project record, are sent to the REI and the contractor through the project team for necessary corrective measures.

The *Environmental Engineering Unit* oversees implementation of the Final Environmental Impact Statement on bridge construction projects involving the removal and disposal of lead-based paint. The Unit's active involvement in training the supervisors and overseeing the abrasive blasting operations has resulted in the successful completion of various paint removal projects. This unit also oversees the proper and safe disposal of other hazardous waste and regulated waste encountered during construction activities.

In addition to enforcing the lead paint removal protocols, the Unit manages other environmental concerns. These issues include, but are not limited to, asbestos abatement, PCB remediation, soil sampling, groundwater sampling, remediation of contaminated soils and groundwater, worker exposure to environmental contaminants, management of waste oil, storage of hazardous waste, management of storm water runoff, soil erosion controls, management of concrete washout wastewater, site safety, and OSHA compliance. Typically, the unit participates in the design stage to ensure that any environmental issues are addressed during the construction phase of the project. During construction, the unit provides on-site quality assurance oversight and environmental management to ensure compliance with environmental regulations and contract documents. The role of this Unit in ensuring public safety has been recognized and commended by the community.

The unit continues to monitor impacts to the City's waterways for numerous projects.

The unit is responsible for site-specific discharge monitoring in conjunction with the NYS SPDES Discharge Permits for discharges at various bridges.

The Unit also provides input and technical services for the East Side Coast Resiliency Project, which will consist of the construction of flood walls, levees and gates to protect lower Manhattan in the event of future flooding from storm events such as Superstorm Sandy. In addition, the Unit works with other City agencies in the development of guidelines and standards for the implementation of the NYC MS4 permit system, which addresses the discharge of stormwater to NYC waterways.

The Unit also oversees and provides quality assurance management of field coating application on bridge construction and maintenance projects. These responsibilities include overseeing the quality of materials and equipment being used on projects and to provide inspection oversight to ensure that proper SSPC or NACE steel cleaning and painting guidelines and standards are followed.

The **Bureau of Management and Support Services** provides essential administrative and analytic services to each of the operational bureaus of the Division of Bridges. The Bureau is divided into four primary sections: **Office of the Assistant Commissioner, Administration and Finance, Capital Coordination, and the Truck Permit Unit**. Each highly-specialized section is designed to address those issues and requirements that are critical to the operation of the respective Bureaus within the Division.

In addition to the Division-wide responsibility for conflict resolution, Equal Employment Opportunity coordination, confidential investigations, Bridges' litigation claims, 311 Siebel complaints, Bridges' Engineering Service Agreements, space allocation, and special projects, the **Assistant Commissioner** oversees, on an executive level, the following areas and functions:

The **Senior Director of the Administration and Finance Section** oversees and administers all administrative/personnel-related functions for the Division, acting as a liaison with the Central Personnel Coordinator in NYCDOT Personnel including, but not limited to, recruiting for vacancies (this includes reviewing for completeness and submitting the necessary paperwork, and reviewing and distributing candidates' resumes); maintaining all Managerial Position Descriptions; maintaining all Division organization charts; scheduling training; confidential investigations; maintaining records of IFA-funded positions; initiating and assisting in resolving disciplinary/grievance actions; serving as Conflicts of Interest and Financial Disclosure Officer; collecting and reviewing managerial and non-managerial performance evaluations; absence control; providing interpretive advice to Division management regarding City and Agency policy and procedures; and overseeing telephone and facility-related issues for personnel located at 55 Water Street in Manhattan.

The Senior Director of the Administration and Finance Section also oversees the following three units:

The **Analytic Unit** prepares comprehensive bi-weekly and monthly reports that address major issues confronting the Division; compiles statistical data detailing the Division's productivity; processes and monitors all FOIL requests; frames issues in which oversight assistance is required for use by the Division, NYCDOT Executive Management and the Mayor's Office; and prepares the City Charter-mandated **Bridges and Tunnels Annual Condition Report**.

The **Vehicle Coordination Unit** tracks the placement and condition of all vehicles under the jurisdiction of Bridges. It maintains a database and prepares reports containing this information; provides information and reports to appropriate inquiring Divisions and Agencies such as the Auditor General's Office, NYCDOT Legal Department and NYCDOT Litigation Support Services; coordinates the assignments of vehicles and their movement throughout various borough field locations and job sites; prepares reports on Vehicle Status and replacement; prepares reports for the purpose of tracking Overnight Vehicle Assignments for all Division vehicles; receives and routes vehicle Accident Reports, Police Reports and Security Incident Reports relating to vehicle accident, theft and/or vandalism; coordinates priorities for vehicle and equipment repair with Fleet Services; prepares reports and memoranda regarding vehicle safety issues and communication procedures for the NYCDOT Communication Center; and collects required documentation from field personnel for checking Driver Certifications with the Department of Motor Vehicles and EZ Pass.

The **Finance Unit** oversees the Division's entire expense budget process including, but not limited to, base-line preparation, spending plans, overtime control, financial plan changes, and budget modifications. The unit further oversees all Division-wide fiscal activities, including the establishment and monitoring of all IFA-related project budgets, while simultaneously ensuring that the budget and plans represent the Division's priorities.

The **Senior Director of the Capital Coordination Section** is responsible for preparing, coordinating and updating the capital budget and capital program initiative within the Division of Bridges. Currently, the Division's Ten-Year Capital Plan is worth approximately \$9.2 billion. This plan is designed to rehabilitate the City's bridges. Responsibilities include: administering and participating in the development and implementation of planning capital

projects; acting as liaison with oversight agencies, DOT Administration and all responsibility centers within Bridges; reviewing and processing transfer of fund requests in an attempt to resolve funding issues; and maintaining the Division's registration report for all current year capital contracts. In addition, this section coordinates the Division's submission of Initial Financial Plans, Annual Financial Plan and Construction Management Plans prepared by Project Mangers that must be submitted to the Office of Finance, Contracts & Program Management.

The Senior Director of the Capital Coordination Section also oversees the following three units:

The *Project Delivery Section* monitors and collects data for all current and future capital Bridge projects from the identification and initiation phase through design and construction completion. The unit serves as a liaison with internal Agency divisions, sharing project schedule data related to procurement registration, Capital Commitment Plan forecasts, and project status.

The *Capital Consultant Section* serves as a liaison between the Division of Bridges and the Office of the Agency Chief Contracting Officer, other Agency Divisions, and the various consulting firms involved with the procurement process. The duties of this unit include: overseeing the Division's capital consultant contract procurement from scope to registration and preparing status reports. Certificates to Proceed [CPs] are a critical component for the registration of any Construction, Consultant Programs, Force Account, Change Order and Engineering Service Agreement and assigned ESA tasks. Coordinating the submission of New and Revised Certificates to Proceed for submission to the Capital Budget is overseen by this Unit.

The *Capital Contract Change Order and Force Account Section* serves as a liaison between the Division of Bridges and the Office of the Agency Chief Contracting Officer, other Agency Divisions, the public and private railroads; processes the Division's change orders through registration, and coordinates Railroad Force Account Agreements and railroad invoice payments for Division construction projects.

*Railroad Force Account Agreements* are a vital component in the rehabilitation/reconstruction program since train traffic affects 318 (39.80%) of City-owned bridges. The Railroad Coordinator provides a single point of contact for all railroad issues. The coordinator informs managers of "typical" railroad problems and attempts to avoid them through proactive measures. Upon registration of the railroad force account contracts between the City of New York and the respective railroad, Notices to Proceed [NTPs] are issued, and invoices are generated. The invoices, once approved by the engineers for the railroad and the corresponding DOT Project Manager, are sent to the Railroad Coordinator for processing and actual payment by the New York City Comptroller's Office.

Due to the nature of bridge construction projects, change order work is often on the critical path. Any delay in the issuance of a change order affects the overall project, and adds substantial overruns to the final cost. A tracking process for change orders has been implemented that significantly reduces the time for the approval process.

The ***Senior Director of the Truck Permit Section*** issues approximately 470 Annual Overweight Load Permits (mostly renewals), and approximately 45,000 Daily Oversize/Over-dimensional/ OD permits (including OD permits for film production vehicles and Supersize Truck Permits), and 260 Annual Self-Propelled Crane Permits, all in accordance with the New York City Department of Transportation Policy and Procedures and the New York City Traffic Rules and Regulations section 4-15.



# 2020 INVENTORY

---

---

<b>Inventory Summary</b>	<b>I-1</b>
<b>Posted, Partially Closed &amp; Closed Bridges</b>	<b>I-2</b>
<b>Bridge Identification Numbers</b>	<b>I-3</b>
<b>New York State Inspection System</b>	<b>I-4</b>
<b>Standard Abbreviations</b>	<b>I-5</b>
<b>Information on Inventory List</b>	<b>I-6</b>
<b>Adjustments to the Inventory</b>	<b>I-7</b>
<b>Rating Note</b>	<b>I-8</b>
<b>Listing of Bridge Inventory and Ratings</b>	<b>I-9</b>

---

---

## Inventory Summary

In Calendar Year 2020, the total number of bridge and tunnel structures under the jurisdiction of the New York City Department of Transportation (NYCDOT) increased to 803. In 2017, the four vehicular tunnels were assigned Tunnel Identification Numbers and removed from the inventory of bridges. NYCDOT owns, operates, and/or maintains 776 non-movable bridges, 23 movable bridges, and four vehicular tunnels. In 1999, a Memorandum of Understanding between NYCDOT and the New York City Department of Environmental Protection (NYCDEP) added 67 culverts (since reduced to 53) in Staten Island to the Division's Inventory. While the Division is responsible for the capital rehabilitation of these structures, maintenance and inspection responsibilities remain with NYCDEP.

The condition of New York City's 799 elevated bridge structures, as measured by the City's general condition rating, are as follows: One structure was rated *Poor*, 386 structures were rated *Fair*, 268 structures were rated *Good*, 143 structures were classified *Very Good*, and one structure is closed.

Over the past 10 years, there has been an increase in the number of bridges rated "Good," and a decrease in the number of bridges rated "Fair," as shown below.

	2011	2012	2013	2014	2015	#2016	#2017	2018	2019	2020
<b>Poor</b>	3	1	1	0	0	0	2	3	4	1
<b>Fair</b>	459	460	456	456	458	461	454	361	361	386
<b>Good</b>	215	212	217	221	228	224	223	241	263	268
<b>Vgood</b>	109	114	114	111	102	107	106	181	160	143
<b>Closed</b>	1	1	1	1	1	2	2	4	4	1
<b>Unrated</b>							2			
	787	788	789	789	789	794	789	790	792	799
<b>!!Tunnels</b>	!!	!!	!!	!!	!!	!!	4	4	4	4
<b>TOTAL STRUCTURES</b>	<b>787</b>	<b>788</b>	<b>789</b>	<b>789</b>	<b>789</b>	<b>794</b>	<b>793</b>	<b>794</b>	<b>796</b>	<b>803</b>

<sup>1</sup>In 2020 98 of the Parks bridges accounted for 25.4% of the "Fair" rated structures.

# The bridge ratings reflected in the 2016 and 2017 reports were the traditional NYS bridge condition ratings from 2014 and 2015 with the exception of the bridges inspected by in-house NYCDOT forces (pedestrian bridges). The NYS bridge condition rating system was being converted to a federal system developed by AASHTO and there was no current acceptable formula to translate the results of inspections performed in 2016 and 2017 into the traditional NYS ratings. The AASHTO inspection method does not generate numerical overall bridge condition ratings. The ratings were updated in the 2018 annual report.

The bridges in the Division's inventory connect a vast and diverse highway and street network throughout the City. The impressive East River crossings – the Brooklyn, Manhattan, Williamsburg, and Ed Koch Queensboro Bridges – are the most visible and famous structures, but are by no means representative of all the bridges in the City's inventory. Three hundred twenty-nine (41.18%) of the Division's structures consist of one span (the portion of a bridge between two supports). One hundred nineteen (14.89%) bridges carry pedestrian traffic. Of the 799 structures in the City's inventory, 118 (14.77%) cross waterways; of these, 21 connect the boroughs of the Bronx, Brooklyn, Manhattan and Queens. Three hundred eighteen (39.80%) structures cross the City's labyrinthine system of railroad and subway tracks. Two hundred forty-seven (30.91%) structures cross or connect arterial highways, such as the Henry Hudson Parkway, the Brooklyn-Queens Expressway, and the Belt Parkway, which facilitate traffic flow through and around the five boroughs of the City of New York.

### Rating System

The Division of Bridges bases its general condition ratings directly on the numerical ratings assigned during bridge inspections. Federal law mandates that bridge structures be inspected at least once every two years. The New York State Department of Transportation hires engineering consultants to perform biennial inspections for all bridge structures except pedestrian bridge structures, and bridge structures less than 20 feet in length. Bridge

structures not inspected by the State are inspected by the NYC Department of Transportation's Division of Bridges, with the exception of three NYC Parks Department structures, the East 63<sup>rd</sup> Street Pedestrian Bridge over the FDR Drive (which is inspected by Rockefeller University), and the East 71<sup>st</sup> Street Pedestrian Bridge over the FDR Drive (which is inspected by the Hospital for Special Surgery).

The State inspected 670 (83.85%) bridge structures. The City inspected 124 (15.52%) bridge structures. The remaining bridges in the 2020 inventory are the High Bridge over the Harlem River, which was inspected in 2002 by the Department of Parks and Recreation, two newly inventoried Riverside Park structures (inspected by consultants), and the East 63<sup>rd</sup> and East 71<sup>st</sup> Street Bridges (mentioned above).

Since 2016, the federally mandated biennial inspections no longer generate an overall numerical condition rating under the old rating scale of 1 (structural failure) to 7 (new condition) for all vehicular bridges inspected by NYSDOT consultants. The new inspection scale uses condition states CS1 (good) to CS4 (severe) as described below. Pedestrian bridges, inspected by City forces, still use the old 1 to 7 scale. In certain cases, where a bridge structure is closed to traffic, only a city condition rating is given.

Since 1972 NYSDOT has maintained a bridge condition rating database for all bridges in New York State. For the purposes of the National Bridge Inventory (NBI), the NYS bridge condition ratings were translated annually to a federal Sufficiency Rating, based on 100%, and federal condition ratings, on a 0 (failed) to 9 (new) scale. In 2015, the Federal Highway Administration converted to a new bridge inspection protocol developed by AASHTO. The purpose was to replace qualitative ratings with quantitative assessments. The new protocol assigns bridge elements to 4 condition states and assesses the quantities in each of them. There is no overall bridge condition rating. The NYSDOT adopted the new federal/AASHTO protocol in March 2016. The biennial bridge inspections since that time could not be used to produce overall condition ratings until very recently. The State Source ratings that are shown in the following pages reflect a first attempt at developing a consistent translation. This translation may be refined in the future to improve the overall accuracy of the translation.

City condition ratings correspond to the following ranges of State ratings:

<u>State Numerical Rating</u>		<u>City Condition Rating</u>
1.000 – 3.000	=	POOR
3.001 – 4.999	=	FAIR
5.000 – 6.000	=	GOOD
6.001 – 7.000	=	VERY GOOD

This method is used as a guide in assessing what operational action is needed. The overall bridge rating, in and of itself, is not always indicative of whether a bridge needs major rehabilitation. Further inspection and analysis must be done to determine specific rehabilitation or corrective repair needs.



### Summary of 2020 Bridge Structure Conditions

Rating	Number of Structures	Percent	Number of Spans	Percent	Deck Area Sq Ft	Percent
Poor	1	0.13%	403	8.10%	526,320	3.36%
Fair	386	48.37%	3,241	65.13%	9,518,742	60.82%
Good	268	33.58%	937	18.83%	3,733,567	23.85%
Very Good	143	17.92%	395	7.94%	1,872,776	11.97%
Closed	1	—	—	—	—	—
						%
<b>Total</b>	<b>799</b>	<b>100%</b>	<b>4,976</b>	<b>100%</b>	<b>15,651,405</b>	<b>100.00%</b>

As of December 31, 2020, the condition of the City's bridges indicated that 0.13% were rated as *Poor*; 48.37% were classified as *Fair*; 33.58% were awarded ratings of *Good*; and 17.92% as *Very Good*. Those structures given ratings of *Fair* encompassed 65.13% of bridge spans.

Rating	*2017		2018		2019		2020	
Poor	2	0.25%	3	0.38%	4	0.51%	1	0.13%
Fair	454	57.83%	361	45.93%	361	45.81%	386	48.37%
Good	223	28.41%	241	30.66%	263	33.38%	268	33.58%
Very Good	106	13.50%	181	23.03%	160	20.30%	143	17.92%
Closed	2		4		4		1	
Not Rated	2							
<b>Total</b>	<b>789</b>	<b>100</b>	<b>790</b>	<b>100</b>	<b>792</b>	<b>100</b>	<b>799</b>	<b>100</b>

The bridge ratings reflected in the 2017 report were the traditional NYS bridge condition ratings from 2014 and 2015 with the exception of the bridges inspected by in-house NYCDOT forces (pedestrian bridges). The NYS bridge condition rating system was being converted to a federal system developed by AASHTO and there was no current acceptable formula to translate the results of inspections performed in 2017 into the traditional NYS ratings. The AASHTO inspection method does not generate numerical overall bridge condition ratings. The ratings were updated in the current annual report.

During 2020, Manhattan had the highest percentage of bridge structures rated *fair* – 58.56% - as well as the lowest percentage of bridge structures rated *good* – 25.97%. Staten Island had the second highest percentage of bridge structures classified as *good* – 38.81%, and the second highest percentage of bridge structures rated *fair* – 50.75%. In 2020, Brooklyn had the highest percentage of bridge structures rated as *very good* – 28.41%. The Bronx had the highest percentage of bridge structures classified as *good* – 39.22%. Queens had the third highest percentage of bridge structures classified as *good* – 38%, and the third highest percentage of bridge structures rated as *fair* – 48%.

Borough*	Poor	% of Boro	Fair	% of Boro	Good	% of Boro	Very Good	% of Boro	Total
Bronx	0	0.00%	64	41.83%	60	39.22%	29	18.95%	153
Brooklyn	0	0.00%	75	42.61%	51	28.98%	50	28.41%	176
Manhattan	1	0.55%	106	58.56%	47	25.97%	27	14.92%	181
Queens	0	0.00%	96	48.00%	76	38.00%	28	14.00%	200
Staten Island	0	0.00%	34	50.75%	26	38.81%	7	10.45%	67
<b>Total</b>	<b>1</b>	<b>0.13%</b>	<b>375</b>	<b>48.26%</b>	<b>260</b>	<b>33.46%</b>	<b>141</b>	<b>18.15%</b>	<b>777</b>

\* Does not include borough-crossing bridges (see next table).

Fifty-two percent of the 21 borough-crossing bridge structures were rated in *fair* condition in 2020, and almost 48% were rated *good* or *very good*.

Boro-Crossing	Poor	% of Boro Crossing	Fair	% of Boro Crossing	Good	% of Boro Crossing	Very Good	% of Boro Crossing	Total
Bronx-Manhattan	0	0.00%	3	27.27%	6	54.55%	2	18.18%	11
Brooklyn-Manhattan	0	0.00%	4	100.00%	0	0.00%	0	0.00%	4
Queens-Manhattan	0	0.00%	2	66.67%	1	33.33%	0	0.00%	3
Brooklyn-Queens	0	0.00%	2	66.67%	1	33.33%	0	0.00%	3
Total	0	0.00%	11	52.38%	8	38.10%	2	9.52%	21

These figures evidence that the Division is continuing to make progress in improving the conditions of the City's bridges. However, it continues to remain essential that the overall bridge program include an expansion of the Preventive Maintenance and Corrective Repair programs which have traditionally slowed the deterioration of *good* and *very good* bridges.

During 2020 the total number of closed or partially closed bridge structures was six, with one closed and five partially-closed structures.

### NYCDOT Bridges with Posted Weight Restrictions

BIN	BOROUGH	LOCATION FEATURE-1	LOCATION FEATURE-2	LOCATION FEATURE-3	POSTED TONS	REMARKS
2240019	BROOKLYN & MANHATTAN	BROOKLYN BRIDGE	EAST RIVER	INCLUDING RAMPS	3	NO COMMERCIAL TRAFFIC NO TRUCKS, NO BUSES; 11'0" CLEARANCE
224001A	MANHATTAN	PARK ROW TO BROOKLYN	WILLIAM STREET NORTHBOUND		3	
224001C	MANHATTAN	PEARL STREET TO BROOKLYN	LAND ADJACENT TO BRIDGE		3	
224001F	MANHATTAN	PEARL STREET TO FDR DRIVE	LAND ADJACENT TO BRIDGE		4	
2240039	BROOKLYN & MANHATTAN	WILLIAMSBURG BRIDGE	EAST RIVER			INNER ROADWAYS, NO TRUCKS; OUTER ROADWAYS DESIGN FOR HS20 [36 TONS] AND TRUCKS ARE PERMITTED ON OUTER ROADWAY
2240047	MANHATTAN & QUEENS	ED KOCH QUEENSBORO BRIDGE	EAST RIVER		7.5	LOWER OUTER ROADWAYS POSTED AS H-7.5 [7.5 TONS] (PASSENGER CARS ONLY FOR SOUTHBOUND; PEDESTRIANS AND BICYCLES ONLY FOR NORTHBOUND); LOWER INNER ROADWAYS ARE DESIGNED FOR HS20 TRUCK LOAD [36 TONS]; UPPER ROADWAYS DESIGNED FOR H-15 [15 TONS], <u>NO TRUCKS</u> , <u>ONLY BUSES</u>
2240260	BROOKLYN	CARROLL STREET BRIDGE	GOWANUS CANAL	CARROLL STREET	10	
2240507**	QUEENS	ROOSEVELT AVENUE BRIDGE	VAN WYCK EXPRESSWAY		25	
2240640	MANHATTAN & QUEENS	ROOSEVELT ISLAND	EAST CHANNEL OF THE EAST RIVER		36	
2240660	QUEENS	RIKERS ISLAND BRIDGE	RIKERS ISLAND CHANNEL		36	
2244120	BROOKLYN	HILL DRIVE	PROSPECT PARK LAKE			NO VEHICLES
2245460	MANHATTAN	PARK AVENUE SB	EAST 45 <sup>TH</sup> STREET		15	NO COMMERCIAL TRAFFIC
2245470	MANHATTAN	PARK AVENUE NB	EAST 45 <sup>TH</sup> STREET		15	NO COMMERCIAL TRAFFIC
2246550	MANHATTAN	PARK AVENUE VIADUCT	42 <sup>ND</sup> STREET		15	NO COMMERCIAL TRAFFIC
2247120**	QUEENS	WOODSIDE AVENUE BRIDGE	LIRR MAIN LINE		8	
2247590	QUEENS	FOREST PARK DRIVE	LIRR		8	
2247660	QUEENS	FOREST PARK DRIVE	ABANDONED LIRR		8	
2257569	MANHATTAN	MILLER HIGHWAY – ROUTE 9A	RIVERSIDE PARK SOUTH		22	
226771A**	MANHATTAN	79 <sup>TH</sup> STREET RAMP to HHP	79 <sup>TH</sup> STREET BOAT BASIN GARAGE		15	
226771B**	MANHATTAN	79 <sup>TH</sup> STREET RAMP TO GARAGE	79 <sup>TH</sup> STREET BOAT BASIN GARAGE		15	
226771C**	MANHATTAN	GARAGE RAMP TO 79 <sup>TH</sup> STREET	79 <sup>TH</sup> STREET BOAT BASIN GARAGE		15	
226771D**	MANHATTAN	SB HHP RAMP TO 79 <sup>TH</sup> STREET	79 <sup>TH</sup> STREET BOAT BASIN GARAGE		15	

**22 COUNT**



## Partially Closed Bridges

### NEW YORK CITY DEPARTMENT OF TRANSPORTATION

BIN	BOROUGH	LOCATION FEATURE-1	LOCATION FEATURE-2	LOCATION FEATURE-3	FISCAL YEAR*	REMARKS
2076640	BRONX	DEPOT PLACE	CONRAIL HUDSON DIVISION			ONE LANE CLOSED TO TRAFFIC (BUT OPEN TO PEDESTRIANS AND BICYCLES), AND ONE LANE OPEN
2244120	BROOKLYN	HILL DRIVE (TERRACE BRIDGE)	PROSPECT PARK LAKE		CONSTRUCTION MOVED DUE TO LACK OF FUNDING	CLOSED TO VEHICULAR TRAFFIC, OPEN TO PEDESTRIAN TRAFFIC, ALONG THE CENTER OF THE ROADWAY.
2248379	QUEENS	BOATHOUSE BRIDGE	AQUACADE LAKE			LEFT SIDE CLOSED TO VEHICULAR TRAFFIC, AND OPEN TO PEDESTRIAN TRAFFIC.
2233040	MANHATTAN	EAST 60 <sup>TH</sup> STREET	FDR DRIVE			CLOSED TO PUBLIC VEHICLES, OPEN TO PEDESTRIAN TRAFFIC.
2245230	MANHATTAN	WEST 148 <sup>TH</sup> STREET PEDESTRIAN	AMTRAK 30 <sup>TH</sup> STREET BRANCH			STAIRCASE CLOSED.

5 COUNT

\* - CONSTRUCTION CONTRACT LETTING

2/13/19

## Closed Bridges

### NEW YORK CITY DEPARTMENT OF TRANSPORTATION

There is one closed bridge.

BIN	BOROUGH	LOCATION FEATURE-1	LOCATION FEATURE-2	LOCATION FEATURE-3	REMARKS
2245290	MANHATTAN	WEST 155 <sup>TH</sup> STREET PEDESTRIAN	AMTRAK 30 <sup>TH</sup> STREET BRANCH		SCHEDULED FOR DEMOLITION IN FY26

2/26/20

## Bridge Identification Numbers

In 1972, the State of New York developed a computerized system to store inventory and inspection data on bridges that are greater than 20 feet in length. In New York City, structures that are 20 feet in length or less, “mini-bridges,” are tracked independently by the City. Each structure is distinguished by a separate Bridge Identification Number (B.I.N.).

A six-digit B.I.N. identifies a single structure or group of connected or associated structures, while the seven-digit B.I.N. identifies each of those connected or associated bridge structures individually. Each level of a bi-level bridge, each separate bridge structure in a parallel configuration, and each ramp attached to a main bridge is considered an individual structure and assigned its own unique B.I.N. For example, the Brooklyn Bridge has one six-digit B.I.N., 2-24001, which incorporates the entire bridge. All ramps and secondary structures, as well as the main structure, are identified by their own seven-digit numbers, such as 2-24001-A, 2-24001-B, etc.

### **If the prefix (first number) of the B.I.N. is:**

**1**, the bridge is considered part of the **State** bridge system. This number might include City bridges if maintenance is shared between City and State.

**2**, the bridge is considered part of the **City** bridge system. This number might include State bridges if maintenance is shared between City and State.

**M, Q, or R**, the bridge is a “mini-bridge,” and is considered part of the **City** bridge system. They are located in Manhattan, Queens, or Staten Island, respectively.

### **If the suffix (last character) of the B.I.N. is:**

**1 through 6**, the bridge is in parallel configuration. The left-most bridge in the Direction of Orientation has a last character of 1. The next left-most bridge has a last character of 2, and so on.

**7 or 8**, the bridge is in a bi-level configuration. Seven indicates the lower level and eight indicates the upper level.

**0 or 9**, the bridge is not in parallel or bi-level configuration.

**A letter of the alphabet**, the structure is a ramp physically attached to the main bridge. If more than one ramp is attached to the same span of the main bridge, the characters are assigned alphabetically starting with the left-most ramp in the Direction of Orientation. Other ramps attached to the bridge are assigned alphabetical characters in a clockwise direction.

## New York State Biennial Bridge Inspection Rating System

In 2016, the State changed the rating system used during Biennial Inspections to the federally mandated AASHTO Element Rating System. The new rating system is described in detail in the 2017 NYSDOT Bridge Inspection Manual. Inspectors are also required to follow the guidelines established in the AASHTO Manual for Bridge Element Inspection (AMBEI) and the Federal Highway Administration Bridge Inspection Reference Manual (BIRM). A brief description of the ratings or Condition States is given below. All bridge components now have a quantity associated with it and the ratings dictate what percentage of that quantity falls into the various condition states.

The inspector is responsible for evaluating each element and assigning to it a descriptive Condition State (CS) assessment of "good", "fair", "poor", "severe", or "unknown". The following are general condition state guidelines and shall not be used in place of the AMBEI defects' condition state definitions:

Condition State	Condition Type	General Condition Guideline
CS-1	Good	That portion of the element that has either no deterioration or the deterioration is insignificant to the management of the element, meaning that portion of the element has no condition based preventive maintenance needs or repairs. Areas of an element that have received long lasting structural repairs that restore the full capacity of the element with an expected life equal to the original element may be coded as good condition.
CS-2	Fair	That portion of the element that has minor deficiencies that signify a progression of the deterioration process. This portion of the element may need condition based preventive maintenance. Areas of the element that have received repairs that improve the element, but the repair is not considered equal to the original member may be coded as fair.
CS-3	Poor	That portion of the element that has advanced deterioration but does not warrant structural review. This portion of the element may need condition based preventative maintenance or other remedial action.
CS-4	Severe	That portion of the element that warrants a structural review to determine the effect on strength or serviceability of the element or bridge; OR a structural review has been completed and the defects impact strength or serviceability of the element or bridge; OR a condition where that portion of the element is no longer effective for its intended purpose.
CS-5	Unknown	That portion of the element not assessable due to lack of access.

City Inspection crews are tentatively set to convert to the AASHTO Element Inspection System in summer 2022. In 2019 and 2020, City Inspectors used the older rating scale during Biennial bridge inspections. In this system, each bridge element is investigated and its structural condition is numerically rated according to the system indicated below:

<u>Numerical Rating</u>	<u>Description</u>
1	Potentially Hazardous
2	Used to shade between a rating of 1 and 3
3	Serious deterioration, or not functioning as originally designed
4	Used to shade between a rating of 3 and 5
5	Minor deterioration, and is functioning as originally designed
6	Used to shade between a rating of 5 and 7
7	New condition
8	Not Applicable
9	Unknown (due to inaccessibility, e.g. footings or piles)

Based on these individual ratings for each element, a weighted average rating is computed for the entire structure.

These ratings (both individual and weighted average) are recorded in our Bridge Data System application (BDS), and reports are produced in PDF format. Together with photographs and explanatory descriptions, the ratings provide the Division with information on the existing condition of each bridge.

A description of the condition ratings 1 through 7, with programmed responses to certain critical ratings, demonstrates the importance of these inspections:

A rating of 1 describes an extremely serious condition which is deemed potentially hazardous. This rating, which is phoned in by the inspection leader, necessitates that the Division respond immediately by 1) closing the structure either completely or partially until emergency repairs are made, or 2) limiting the vehicle weight permitted on the structure and then performing repairs on a timely basis.

A rating of 3 describes a bridge element that is not functioning as designed. Although not considered hazardous, such members require extensive rehabilitation. A determination is then made to repair such rated members either by the Division's in-house repair personnel, the critical maintenance contractor (When and Where contracts), or a major capital contract. Until such repairs are made, this condition is periodically monitored.

A rating of 5 indicates the member is functioning as designed but exhibits minor deterioration. These members are prioritized and scheduled for repair by the Bridge Maintenance, Inspection and Operations Bureau.

A rating of 7 indicates a new condition requiring no remediation.

The ratings of 2, 4, and 6 are utilized to shade between each of the above ratings.

The bridge ratings reflected here are the traditional NYS bridge condition ratings from 2019 and 2020 and are used on bridges inspected by in-house NYCDOT forces (pedestrian bridges).

## Standard Abbreviations

### General Abbreviations :

APP:	Approach	NB:	Northbound
AVE:	Avenue	PED BR:	Pedestrian Bridge
BLVD:	Boulevard	PKWY:	Parkway
BR:	Bridge	PL:	Place
CPK:	Central Park	RD:	Road
DR:	Drive	SB:	Southbound
EB:	Eastbound	ST:	Street
EXPWY:	Expressway	TPKE:	Turnpike
I:	Interstate	WB:	Westbound
LN:	Lane		
X:	No State accepted mileage markers exist on this route		

### Routes :

<u>No.</u>	<u>Borough</u>	<u>Name</u>
25	Queens	Union Turnpike
25A	Queens	Northern Boulevard
27	Brooklyn	Southern Parkway
I-87	Manhattan, Bronx	Major Deegan Expressway
I-95	Manhattan, Bronx	Cross Bronx Expressway
I-278	Brooklyn, Queens	Brooklyn-Queens Expressway
I-278	Bronx	Bruckner Expressway
I-278	Staten Island	Staten Island Expressway
I-295	Queens	Clearview Expressway
I-295	Bronx	Throgs Neck Expressway
I-440	Staten Island	Richmond Parkway
I-478	Brooklyn	Brooklyn Battery Tunnel
I-495	Queens	Long Island Expressway
I-678	Queens	Whitestone Expressway, Van Wyck
I-878	Queens	Nassau Expressway
I-895	Bronx	Sheridan Expressway



## Standard Abbreviations

### Highways :

BCIP:	Belt System - Cross Island
BE:	Bruckner Expressway
BLP:	Belt System - Laurelton Parkway
BPP:	Bronx Pelham Parkway
BQE:	Brooklyn-Queens Expressway
BRPC:	Bronx River Parkway (in NYC)
BSHP:	Belt System - Shore Parkway
BSOP:	Belt System - Southern Parkway
CBE:	Cross Bronx Expressway
FDRD:	Franklin D. Roosevelt Drive (to East 127 <sup>th</sup> Street)
GCP:	Grand Central Parkway
GW:	George Washington Bridge
HHP:	Henry Hudson Parkway
HRD:	Harlem River Drive (from East 127 <sup>th</sup> Street)
HRPC:	Hutchinson River Parkway (in NYC)
IP:	Jackie Robinson (Interborough) Parkway
LIE:	Long Island Expressway
MAP:	Marine Parkway
MDE:	Major Deegan Expressway
MP:	Mosholu Parkway
OCP:	Ocean Parkway
PR:	Prospect Expressway
RP:	Richmond Parkway
VWE:	Van Wyck Expressway
WLMBRG:	Williamsburg Bridge
WSE:	West Shore Expressway (also known as East River Drive from 1935 to 1947)

## Information Available On Division Of Bridges Inventory Of Bridge Structures

- **Bridge Identification Number (B.I.N.)**
- **Borough :**

B - The Bronx	Q - Queens	R - Staten Island
K - Brooklyn	M - Manhattan	
- **Feature Carried :** Name of passageway carrying vehicle or pedestrian traffic.
- **Feature Crossed :** Description of area crossed.
- **Railroad Crossed (if applicable):**

A - Amtrak	N - New York & Atlantic
C - Conrail	O - B & O Railroad
L - Long Island Railroad	S - Staten Island Railway
M - Metro-North (MTA)	T - NYC Transit Authority
X - CSX	
- **Other Owner :**

ED	Department of Education
F	Ferries (Department of Transportation)
P	Department of Parks and Recreation
PD	Police Department
- **Bridge Type :**

A	Arterial	PED	Pedestrian
E	East River	R	Ramp
M	Movable	T	Tunnel
O	Off-System	W	Waterway
- **Rating Source:**

(City)	City Inspection	(Parks)	Parks Inspection
(State)	State Inspection	(University)	Rockefeller University Inspection
- **Rating :** Numerical and/or verbal rating

1.000 - 3.000:	POOR	
3.001 - 4.999:	FAIR	
5.000 - 6.000:	GOOD	
6.001 - 7.000:	VGOD	VERY GOOD
- **Deck Area:** \*Square feet - \*the footage in the current report for some structures may differ greatly from the 2019 report due to changes in the way NYS DOT calculates their measurements.
- **CD:**

Community Board District

## 2020 Bridge Inventory Adjustments

There were 5 bridges deleted from and 12 bridges added to the City's inventory since the 2019 Annual Report was issued.

B.I.N.	BORO	FEATURE CARRIED	FEATURE CROSSED	EXPLANATION
<b>- Bridges deleted from the City's Inventory:</b>				
2249230	R	TRACY AVENUE PEDESTRIAN BRIDGE	SIRT SOUTH SHORE	DEMOLISHED
2249250	R	BETHEL AVENUE PEDESTRIAN BRIDGE	SIRT SOUTH SHORE	DEMOLISHED
2241030	B	EAST 163 <sup>RD</sup> STREET	CSX PORT MORRIS (ABANDONED)	DEMOLISHED
2241040	B	THIRD AVENUE	CSX PORT MORRIS (ABANDONED)	DEMOLISHED
2270250	B	BROOKE AVENUE	CSX PORT MORRIS (ABANDONED)	DEMOLISHED
<b>- Bridges added to the City's Inventory:</b>				
2271590	M	WEST 158 <sup>TH</sup> STREET PEDESTRIAN BRIDGE	FORT WASHINGTON PARK	PARKS
2271630	M	LITTLE HELL GATE	HARLEM RIVER INLET	PARKS
2271640	M	CARL SHURZ PARK	PARK PATH AT EAST 87 <sup>TH</sup> STREET	PARKS
Q00003	Q	BROOKVILLE PARK PEDESTRIAN BRIDGE AT 142 <sup>ND</sup> AVENUE	BROOKVILLE PARK STREAM	PARKS
Q00004	Q	BROOKVILLE PARK PEDESTRIAN BRIDGE AT CANEY ROAD	BROOKVILLE PARK STREAM	PARKS
Q00006	Q	BROOKVILLE PARK PEDESTRIAN BRIDGE AT NEWHALL AVENUE	BROOKVILLE PARK STREAM	PARKS
Q00007	Q	BROOKVILLE PARK PEDESTRIAN BRIDGE AT 147 <sup>TH</sup> AVENUE	BROOKVILLE PARK STREAM	PARKS
Q00008	Q	BROOKVILLE PARK PEDESTRIAN BRIDGE AT 144 <sup>TH</sup> AVENUE	BROOKVILLE PARK STREAM	PARKS
2269470	B	STARLIGHT PARK SOUTH PEDESTRIAN BRIDGE	BRONX RIVER	PARKS
2271600	B	KIERAN TRAIL CART PATH	VAN CORTLANDT LAKE	PARKS
2271650	R	LEMON CREEK PARK PEDESTRIAN BRIDGE	PRINCESS BAY INLET	PARKS
2233052	M	HARLEM RIVER DRIVE NORTHBOUND	NORTHBOUND HARLEM RIVER DRIVE RAMP TO EAST 127 <sup>TH</sup> STREET	

REV. DATE 5/4/21

## 2020 Rating Note

Beginning in April 2016, New York State began inspecting and rating the City's roadway bridges using a new national system, the AASHTO Element rating system. All bridges in the following table that have been inspected since then and that show a rating source of either "STATE" or "PARKS" were inspected according to this new scale. New York City DOT continues to rate pedestrian bridges on the older rating scale, so all bridges with a rating source of "CITY" or with an inspection date of March 2016 or earlier were rated with that older scale.

Ratings under the new AASHTO system do not include a single numerical score for the entire bridge. Instead, inspectors report the percentage of each element that is in Condition State CS1 (Very Good), CS2 (Good), CS3 (Fair), or CS4 (Poor). For example, the Curb element for a bridge could be rated 40% CS1, 30% CS2, 20% CS3, and 10% CS4.

The previous rating system calculated an overall score for each bridge, on a scale of 7 (New) to 1 (Failed). To allow comparison of the new ratings with those ratings, this report translates the new detailed scores into a single 7-to-1 rating for each bridge, using a refined version of a methodology developed by New York State. Because the new inspections report more detail but with somewhat less granularity (a four-level scale instead of the former seven-point scale), an exact translation is not possible. Therefore, the ratings in this report could differ significantly from ratings reported with previous inspections even without a significant improvement or decline in the condition of the bridge. DOT will be continuing to refine this translation to make comparisons as useful as possible.

**BRIDGE INVENTORY SORTED BY FEATURE CARRIED**

BRIDGE ID #	BORO	FEATURE CARRIED	FEATURE CROSSED	RAIL ROAD	BRIDGE TYPE	OTHER OWNER	SPANS	RATING SOURCE	INSPECTION DATE	GENERAL RECOMMENDATION**	CURRENT RATING*	VERBAL RATING	DECK AREA (SQ FT)	REPLACEMENT COST	CD	CD2	CD3
2243310	K	2ND AVENUE	LIRR BAY RIDGE	N	O		2	STATE	9/1/2020	6	4.347	FAIR	17,830	\$80,235,000	310		
224004J	M	(ROUTE 25X) TO/FROM 2ND AVENUE	NYC GARAGE		OE		14	STATE	3/19/2020	5	5.317	GOOD	42,301	\$190,354,500	108		
2243320	K	3RD AVENUE	LIRR BAY RIDGE	N	O		4	STATE	8/13/2019	5	5.125	GOOD	17,246	\$77,607,000	310		
2244160	K	3RD AVENUE	SHORE ROAD DRIVE		O		1	STATE	4/30/2019	6	6.222	VGOOD	4,360	\$19,620,000	310		
2243330	K	4TH AVENUE	LIRR BAY RIDGE	NT	O		4	STATE	7/12/2019	5	4.806	FAIR	13,845	\$62,302,500	310		
2243839	K	4TH AVENUE	NYCTA BMT TRACKS	T	O		1	STATE	7/5/2019	6	6.550	VGOOD	4,440	\$19,980,000	307		
2231270	K	4TH AVENUE	BELT SYSTEM - SHORE PARKWAY		A		2	STATE	2/27/2020	5	5.294	GOOD	6,100	\$27,450,000	310		
2244480	K	5TH AVENUE	GREENWOOD CEMETERY ROAD		O		1	STATE	9/9/2019	5	4.769	FAIR	3,600	\$16,200,000	307		
2243580	K	5TH AVENUE	LIRR & SEA BEACH	NT	O		4	STATE	7/29/2020	4	3.765	FAIR	12,462	\$56,079,000	310		
2066100	K	5TH AVENUE	27X PROSPECT EXPRESSWAY		A		1	STATE	3/25/2020	5	4.977	FAIR	8,800	\$39,600,000	307		
2243590	K	6TH AVENUE	LIRR & SEA BEACH	NT	O		2	STATE	6/26/2019	6	6.153	VGOOD	14,382	\$64,719,000	310		
2243280	K	6TH AVENUE	LIRR ATLANTIC AVENUE	L	O		9	STATE	9/2/2020	5	4.111	FAIR	12,524	\$56,358,000	302		
2243600	K	7TH AVENUE	LIRR & SEA BEACH	NT	O		7	STATE	7/8/2020	6	5.097	GOOD	18,699	\$84,145,500	310		
2243920	K	7TH AVENUE	NYCTA BMT YARD	T	O		2	STATE	6/18/2020	5	4.338	FAIR	3,080	\$13,860,000	307		
2243610	K	8TH AVENUE	LIRR & SEA BEACH	NT	O		2	STATE	6/26/2019	6	6.403	VGOOD	10,834	\$48,753,000	310		
2243840	K	9TH AVENUE	NYCTA BMT YARD	T	O		5	STATE	7/3/2019	6	6.264	VGOOD	12,400	\$55,800,000	312		
2243940	K	9TH AVENUE	NYCTA IND SBWY	T	O		5	STATE	7/2/2019	5	4.673	FAIR	6,496	\$29,232,000	312		
2245209	M	11TH AVENUE	AMTRAK 30TH STREET BRANCH	A	O		2	STATE	9/4/2020	5	4.000	FAIR	15,386	\$69,237,000	104		
2243630	K	11TH AVENUE	LIRR & SEA BEACH	NT	O		5	STATE	6/23/2020	6	6.735	VGOOD	9,600	\$43,200,000	310		
2245010	M	11TH AVENUE VIADUCT	LIRR WEST SIDE YARD	AL	O		34	STATE	11/24/2020	5	4.097	FAIR	140,300	\$631,350,000	104		
2243640	K	13TH AVENUE	LIRR & SEA BEACH	NT	O		5	STATE	7/11/2019	5	5.569	GOOD	16,000	\$72,000,000	310		
2231970	Q	14TH AVENUE	BELT SYSTEM - CROSS ISLAND PARKWAY		A		2	STATE	1/23/2020	5	4.658	FAIR	8,100	\$36,450,000	407		
2243650	K	14TH AVENUE	LIRR BAY RIDGE	N	O		1	STATE	9/9/2020	6	5.650	GOOD	4,800	\$21,600,000	311		
2243670	K	15TH AVENUE	BMT SEA BEACH	T	O		4	STATE	6/13/2019	6	6.426	VGOOD	10,858	\$48,861,000	311		
2243340	K	15TH AVENUE	LIRR BAY RIDGE	N	O		1	STATE	9/9/2020	6	4.491	FAIR	3,614	\$16,263,000	311		
2243680	K	16TH AVENUE	BMT SEA BEACH	T	O		3	STATE	5/13/2020	7	4.742	FAIR	6,816	\$30,672,000	311		
2243360	K	16TH AVENUE	LIRR BAY RIDGE	N	O		1	STATE	9/23/2020	6	4.367	FAIR	5,403	\$24,313,500	311		
2243690	K	17TH AVENUE	BMT SEA BEACH	T	O		4	STATE	5/12/2020	6	6.077	VGOOD	5,292	\$23,814,000	311		
2243370	K	17TH AVENUE	LIRR BAY RIDGE	N	O		1	STATE	9/23/2020	5	3.780	FAIR	3,406	\$15,327,000	312		
2231300	K	17TH AVENUE PEDESTRIAN BRIDGE	BELT SYSTEM - SHORE PARKWAY		PEDESTRIAN-A	P	1	CITY	8/3/2020	3	3.806	FAIR	2,100	\$9,450,000	311		
2243700	K	18TH AVENUE	BMT SEA BEACH	T	O		1	STATE	5/17/2019	6	6.632	VGOOD	5,200	\$23,400,000	311		
2243380	K	18TH AVENUE	LIRR BAY RIDGE	N	O		1	STATE	8/19/2020	6	4.547	FAIR	6,006	\$27,027,000	312		
2243710	K	19TH AVENUE	BMT SEA BEACH	T	O		4	STATE	11/30/2020	4	4.088	FAIR	4,800	\$21,600,000	311		
2243720	K	20TH AVENUE	BMT SEA BEACH	T	O		1	STATE	5/14/2020	7	6.632	VGOOD	7,000	\$31,500,000	311		
2243820	K	21ST AVENUE	BMT SEA BEACH	T	O		4	STATE	5/11/2020	4	3.176	FAIR	21,360	\$96,120,000	311		
2247270	Q	21ST STREET	LIRR NORTH SHORE YARD	L	O		6	STATE	11/8/2019	6	5.111	GOOD	17,591	\$79,159,500	402		
224004H	Q	TO 21ST STREET FROM NEW YORK	22ND STREET		OE		43	STATE	11/4/2020	5	4.580	FAIR	48,100	\$216,450,000	402		
2231330	K	27TH AVENUE PEDESTRIAN BRIDGE	BELT SYSTEM - SHORE PARKWAY		PEDESTRIAN-A	P	1	CITY	12/1/2020	4	4.176	FAIR	2,100	\$9,450,000	313		
2231890	Q	28TH AVENUE PEDESTRIAN BRIDGE	BELT SYSTEM - CROSS ISLAND PARKWAY		PEDESTRIAN-A	P	24	CITY	5/28/2020	4	4.385	FAIR	7,600	\$34,200,000	411		
2230730	Q	31ST AVENUE	2781 NORTHBOUND (BROOKLYN-QUEENS EXPRESSWAY WEST LEG)		A		1	STATE	5/31/2019	6	5.583	GOOD	5,875	\$26,437,500	401		
2230657	Q	31ST STREET	2781 (BROOKLYN-QUEENS EXPRESSWAY) - NYCTA		A		2	STATE	10/21/2020	5	3.986	FAIR	9,957	\$44,806,500	401		
2230640	Q	32ND STREET	2781 (BROOKLYN-QUEENS EXPRESSWAY)		A		2	STATE	8/12/2019	5	4.500	FAIR	8,100	\$36,450,000	401		



**BRIDGE INVENTORY SORTED BY FEATURE CARRIED**

BRIDGE ID #	BORO	FEATURE CARRIED	FEATURE CROSSED	RAIL ROAD	BRIDGE TYPE	OTHER OWNER	SPANS	RATING SOURCE	INSPECTION DATE	GENERAL RECOMMENDATION**	CURRENT RATING*	VERBAL RATING	DECK AREA (SQ FT)	REPLACEMENT COST	CD	CD2	CD3
2230630	Q	35TH STREET	278I (BROOKLYN-QUEENS EXPRESSWAY)		A		4	STATE	5/8/2020	5	4.931	FAIR	8,534	\$38,403,000	401		
2247370	Q	37TH AVENUE	CSX - HELLGATE	X	O		1	STATE	10/19/2019	6	5.892	GOOD	6,868	\$30,906,000	402		
2230620	Q	37TH STREET	278I (BROOKLYN-QUEENS EXPRESSWAY)		A		2	STATE	5/8/2020	5	5.083	GOOD	5,110	\$22,995,000	401		
2247330	Q	39TH STREET (NORTH)	SUNNYSIDE YARD	A	O		14	STATE	11/20/2019	6	6.306	VGOOD	48,200	\$216,900,000	402	401	
2247640	Q	39TH STREET (SOUTH)	AMTRAK & LIRR YARD	AL	O		9	STATE	11/20/2019	6	6.194	VGOOD	34,100	\$153,450,000	402		
2230570	Q	41ST AVENUE	278I (BROOKLYN-QUEENS EXPRESSWAY)		A		2	STATE	8/11/2020	6	6.132	VGOOD	8,450	\$38,025,000	402		
2247390	Q	41ST AVENUE	CSX - HELLGATE	X	O		2	STATE	10/19/2019	5	5.500	GOOD	4,473	\$20,128,500	402	404	
2247410	Q	43RD AVENUE	CSX TRANSPORT	X	O		1	STATE	10/28/2019	5	6.038	VGOOD	3,905	\$17,572,500	402	404	
2247420	Q	44TH AVENUE	CSX TRANSPORT	X	O		1	STATE	10/30/2019	5	5.731	GOOD	3,888	\$17,496,000	402	404	
2230840	Q	44TH STREET	278I (BROOKLYN-QUEENS EXPRESSWAY)		A		2	STATE	4/29/2020	5	4.333	FAIR	5,586	\$25,137,000	401		
2247430	Q	45TH AVENUE	CSX TRANSPORT	X	O		1	STATE	10/30/2019	5	6.061	VGOOD	2,376	\$10,692,000	402	404	
2230820	Q	47TH STREET	GRAND CENTRAL PARKWAY		A		2	STATE	4/27/2020	5	4.236	FAIR	5,824	\$26,208,000	401		
2247290	Q	49TH AVENUE	LIRR - AMTRAK	AL	O		5	STATE	11/22/2020	4	4.431	FAIR	20,658	\$92,961,000	402		
2230800	Q	49TH STREET	278I (BROOKLYN-QUEENS EXPRESSWAY WEST LEG)		A		2	STATE	4/21/2020	5	4.972	FAIR	5,304	\$23,868,000	401		
2230890	Q	49TH STREET	GRAND CENTRAL PARKWAY		A		2	STATE	7/8/2020	6	5.944	GOOD	6,350	\$28,575,000	401		
2243400	K	50TH STREET	LIRR BAY RIDGE	N	O		2	STATE	8/6/2019	5	4.571	FAIR	6,780	\$30,510,000	312		
1247280	Q	51ST AVENUE PEDESTRIAN BRIDGE (2247280)	LIRR MAIN LINE	L	PEDESTRIAN-O		5	CITY	6/26/2020	4	3.951	FAIR	1,030	\$4,635,000	402		
2243390	K	52ND STREET	LIRR BAY RIDGE	N	O		1	STATE	8/19/2020	7	5.250	GOOD	3,267	\$14,701,500	312		
2247190	Q	55TH AVENUE PEDESTRIAN BRIDGE	LIRR MAIN LINE	L	PEDESTRIAN-O		3	CITY	7/7/2020	4	4.120	FAIR	1,296	\$5,832,000	404		
2247450	Q	57TH AVENUE	CSX TRANSPORT	X	O		1	STATE	11/1/2019	6	6.000	VGOOD	2,283	\$10,273,500	405		
2247650	Q	60TH ROAD PEDESTRIAN BRIDGE	LIRR MAIN LINE	L	PEDESTRIAN-O		3	CITY	6/19/2020	5	4.857	FAIR	1,200	\$5,400,000	405	406	
2243350	K	60TH STREET	LIRR BAY RIDGE	N	O		1	STATE	8/8/2019	6	6.167	VGOOD	3,983	\$17,923,500	311		
2247540	Q	60TH STREET	LIRR MONTAUK DIV	L	O		2	STATE	9/20/2019	5	5.333	GOOD	5,340	\$24,030,000	405		
2230520	Q	65TH PLACE	278I (BROOKLYN-QUEENS EXPRESSWAY)		A		2	STATE	2/14/2020	6	5.764	GOOD	11,668	\$52,506,000	402		
2247160	Q	65TH PLACE	LIRR MAIN LINE	L	O		3	STATE	10/11/2019	6	6.000	VGOOD	8,381	\$37,714,500	402		
2243730	K	65TH STREET	BMT SEA BEACH	T	O		4	STATE	5/7/2020	5	4.265	FAIR	12,000	\$54,000,000	311		
2247150	Q	65TH STREET	LIRR MAIN LINE	L	O		3	STATE	10/10/2019	6	5.881	GOOD	6,600	\$29,700,000	402		
1247200	Q	67TH AVENUE PEDESTRIAN BRIDGE (2247200)	LIRR MAIN LINE	L	PEDESTRIAN-O		3	CITY	6/18/2020	4	4.017	FAIR	1,300	\$5,850,000	406		
2230550	Q	69TH STREET	278I (BROOKLYN-QUEENS EXPRESSWAY)		A		2	STATE	2/12/2020	5	5.702	GOOD	12,585	\$56,632,500	402		
2065950	Q	69TH STREET	495I (LONG ISLAND EXPRESSWAY)		A		2	STATE	7/2/2019	5	5.347	GOOD	10,336	\$46,512,000	405		
2247490	Q	69TH STREET	CSX TRANSPORT	X	O		1	STATE	12/12/2020	5	5.745	GOOD	6,175	\$27,787,500	405		
2230560	Q	70TH STREET	278I (BROOKLYN-QUEENS EXPRESSWAY)		A		2	STATE	8/11/2020	6	5.940	GOOD	8,580	\$38,610,000	402		
2248300	Q	71ST AVENUE	COOPER AVENUE		O		1	STATE	7/22/2019	4	5.356	GOOD	2,670	\$12,015,000	405		
2246150	M	72ND STREET CROSS DRIVE (TERRACE BRIDGE)	PEDESTRIAN PATH TO FOUNTAIN		O	P	3	STATE	2/5/2020	6	5.792	GOOD	5,070	\$22,815,000	184		
2246160	M	73RD STREET PEDESTRIAN BRIDGE (BOW BRIDGE)	THE LAKE		PEDESTRIAN-WO	P	1	CITY	8/26/2020	5	4.629	FAIR	1,700	\$7,650,000	184		
2246440	M	79TH STREET PEDESTRIAN BRIDGE	TRANSVERSE ROAD #2		PEDESTRIAN-O	P	1	CITY	5/12/2020	4	3.571	FAIR	5,900	\$26,550,000	184		
2267717	M	79TH STREET PEDESTRIAN PLAZA	79TH STREET BOAT BASIN GARAGE		A	P	10	STATE	5/29/2019	5	3.878	FAIR	29,250	\$131,625,000	107		
226771B	M	79TH STREET RAMP TO GARAGE	79TH STREET BOAT BASIN GARAGE		AR	P	21	STATE	3/6/2020	5	4.500	FAIR	9,706	\$43,677,000	107		
226771A	M	79TH STREET RAMP TO HENRY HUDSON PARKWAY	79TH STREET BOAT BASIN GARAGE		AR	P	4	STATE	2/27/2020	5	3.971	FAIR	2,943	\$13,243,500	107		
2267718	M	79TH STREET TRAFFIC CIRCLE	79TH STREET PEDESTRIAN PLAZA		A	P	34	STATE	5/3/2019	4	3.090	FAIR	24,130	\$108,585,000	107		
2247220	Q	80TH ROAD	LIRR MAIN LINE	L	O		3	STATE	10/15/2019	5	5.414	GOOD	4,048	\$18,216,000	409		
2247570	Q	80TH STREET	77TH AVENUE - LIRR MT	L	O		5	STATE	8/19/2020	6	5.418	GOOD	11,542	\$51,939,000	405		

**BRIDGE INVENTORY SORTED BY FEATURE CARRIED**

BRIDGE ID #	BORO	FEATURE CARRIED	FEATURE CROSSED	RAIL ROAD	BRIDGE TYPE	OTHER OWNER	SPANS	RATING SOURCE	INSPECTION DATE	GENERAL RECOMMENDATION**	CURRENT RATING*	VERBAL RATING	DECK AREA (SQ FT)	REPLACEMENT COST	CD	CD2	CD3
2231250	K	81ST STREET PEDESTRIAN BRIDGE	BELT SYSTEM - SHORE PARKWAY		PEDESTRIAN-A	P	5	CITY	3/3/2020	4	4.431	FAIR	3,100	\$13,950,000	310		
2247230	Q	82ND AVENUE	LIRR MAIN LINE	L	O		3	STATE	10/18/2019	5	5.607	GOOD	4,048	\$18,216,000	409		
2243570	K	88TH STREET	BMT SEA BEACH	T	O		1	STATE	6/9/2020	6	5.812	GOOD	12,167	\$54,751,500	313		
1247010	Q	91ST PLACE (2247010)	LIRR PORT WASHINGTON BRANCH	L	O		1	STATE	9/30/2019	6	6.167	VGOOD	2,760	\$12,420,000	404		
2231260	K	92ND STREET PEDESTRIAN BRIDGE	BELT SYSTEM - SHORE PARKWAY		PEDESTRIAN-A	P	6	CITY	8/28/2020	4	3.887	FAIR	3,000	\$13,500,000	310		
2247020	Q	94TH STREET PEDESTRIAN BRIDGE	LIRR PORT WASHINGTON BRANCH	L	PEDESTRIAN-O		5	CITY	6/17/2020	4	3.667	FAIR	905	\$4,072,500	404		
2248250	Q	102ND STREET	HAWTREE BASIN		WO		3	STATE	7/19/2019	6	6.088	VGOOD	4,900	\$22,050,000	410		
2231730	Q	130TH AVENUE	BELT SYSTEM - LAURELTON PARKWAY NORTHBOUND		A		1	STATE	1/23/2020	5	5.115	GOOD	4,354	\$19,593,000	413		
2231740	Q	130TH AVENUE	BELT SYSTEM - LAURELTON PARKWAY SOUTHBOUND		A		1	STATE	1/27/2020	5	4.038	FAIR	4,354	\$19,593,000	413		
2231590	Q	130TH STREET	BELT SYSTEM - SOUTHERN PARKWAY		A		2	STATE	1/15/2020	5	5.053	GOOD	6,800	\$30,600,000	410		
2240089	BM	145TH STREET BRIDGE	HARLEM RIVER		WMO		8	STATE	7/19/2019	7	6.125	VGOOD	54,374	\$244,683,000	110	204	201
2231980	Q	147TH STREET	BELT SYSTEM - CROSS ISLAND PARKWAY		A		2	STATE	2/14/2020	5	5.000	GOOD	6,300	\$28,350,000	407		
2247070	Q	147TH STREET	LIRR PORT WASHINGTON BRANCH	L	O		1	STATE	10/2/2019	5	6.000	VGOOD	2,888	\$12,996,000	407		
2247090	Q	149TH PLACE	LIRR PORT WASHINGTON BRANCH	L	O		2	STATE	10/3/2019	5	5.526	GOOD	4,340	\$19,530,000	407		
2231960	Q	149TH STREET	BELT SYSTEM - CROSS ISLAND PARKWAY		A		2	STATE	1/23/2020	5	4.526	FAIR	6,210	\$27,945,000	407		
2247080	Q	149TH STREET	LIRR PORT WASHINGTON BRANCH	L	O		1	STATE	7/29/2020	7	6.438	VGOOD	4,720	\$21,240,000	407		
2231950	Q	150TH STREET	BELT SYSTEM - CROSS ISLAND PARKWAY		A		2	STATE	1/28/2020	5	4.471	FAIR	5,900	\$26,550,000	407		
2247100	Q	150TH STREET	LIRR PORT WASHINGTON BRANCH	L	O		2	STATE	10/4/2019	6	5.681	GOOD	7,344	\$33,048,000	407		
2231920	Q	160TH STREET	BELT SYSTEM - CROSS ISLAND PARKWAY		A		2	STATE	8/9/2019	6	5.278	GOOD	5,704	\$25,668,000	407		
2240650	Q	163RD AVENUE PEDESTRIAN BRIDGE	HAWTREE BASIN		PEDESTRIAN-WO		13	CITY	8/6/2020	4	4.522	FAIR	5,000	\$22,500,000	410		
7705510	Q	167TH STREET PEDESTRIAN BRIDGE	LIRR PORT WASHINGTON BRANCH	L	PEDESTRIAN-O		3	CITY	6/16/2020	4	4.000	FAIR	840	\$3,780,000	407		
206672A	B	174TH STREET - NORTH PEDESTRIAN BRIDGE	8951 - SHERIDAN EXPRESSWAY		PEDESTRIAN-A		4	CITY	4/6/2020	5	4.833	FAIR	1,800	\$8,100,000	209		
206672B	B	174TH STREET - SOUTH PEDESTRIAN BRIDGE	8951 - SHERIDAN EXPRESSWAY		PEDESTRIAN-A		4	CITY	4/6/2020	5	4.731	FAIR	1,900	\$8,550,000	209		
2241259	B	204TH STREET PEDESTRIAN BRIDGE	METRO NORTH RR HAR	M	PEDESTRIAN-O	P	1	CITY	3/14/2018	4	3.845	FAIR	4,700	\$21,150,000	227	207	
2247680	Q	221ST STREET	LIRR PORT WASHINGTON BRANCH	L	O		3	STATE	10/7/2019	6	5.698	GOOD	6,050	\$27,225,000	411		
2231840	Q	225TH STREET	BELT SYSTEM - SOUTHERN PARKWAY		A		2	STATE	5/28/2020	5	5.553	GOOD	6,968	\$31,356,000	413		
2246490	M	A.C. POWELL BOULEVARD NORTHBOUND	A.C. POWELL BOULEVARD		O		1	STATE	2/8/2020	4	4.475	FAIR	2,970	\$13,365,000	110		
2243530	K	ALBANY AVENUE - AVENUE H	LIRR BAY RIDGE	N	O		2	STATE	8/1/2019	6	6.324	VGOOD	35,100	\$157,950,000	318		
2249320	R	ALBEE AVENUE	STATEN ISLAND RAILWAY SOUTH SHORE	S	O		3	STATE	9/13/2019	5	4.393	FAIR	6,500	\$29,250,000	503		
2268920	R	AMBOY ROAD	LEMON CREEK		WO		1	STATE	2/12/2020	6	4.500	FAIR	1,376	\$6,192,000	503		
2247530	Q	ANDREWS AVENUE	LIRR MONTAUK DIV	L	O		1	STATE	9/23/2019	7	6.594	VGOOD	3,350	\$15,075,000	405		
2249330	R	ANNADALE ROAD	STATEN ISLAND RAILWAY SOUTH SHORE	S	O		1	STATE	8/16/2019	6	5.333	GOOD	3,540	\$15,930,000	503		
2249820	R	ARTHUR KILL ROAD	ARTHUR KILL STREAM		WO		1	STATE	4/23/2019	4	4.848	FAIR	1,562	\$7,029,000	503		
2249240	R	ARTHUR KILL ROAD	STATEN ISLAND RAILWAY SOUTH SHORE	S	O		1	STATE	10/1/2020	4	4.439	FAIR	3,700	\$16,650,000	503		
2230810	Q	ASTORIA BOULEVARD EASTBOUND	2781 (BROOKLYN-QUEENS EXPRESSWAY WEST LEG)		A		4	STATE	5/3/2019	4	3.956	FAIR	8,259	\$37,165,500	401		
2243569	K	ATLANTIC AVENUE	LIRR ATLANTIC AVENUE	L	O		75	STATE	8/2/2019	4	3.344	FAIR	135,100	\$607,950,000	316	305	
2244170	K	ATLANTIC AVENUE SERVICE ROAD EASTBOUND	EAST NEW YORK AVENUE		O		2	STATE	5/30/2019	5	6.235	VGOOD	3,192	\$14,364,000	305		
2244180	K	ATLANTIC AVENUE SERVICE ROAD WESTBOUND	EAST NEW YORK AVENUE		O		2	STATE	5/30/2019	5	5.702	GOOD	5,600	\$25,200,000	305		
2243750	K	AVENUE O	BMT SEA BEACH	T	O		1	STATE	6/17/2019	6	6.093	VGOOD	4,658	\$20,961,000	311		
2243760	K	AVENUE P	BMT SEA BEACH	T	O		1	STATE	6/10/2019	6	6.721	VGOOD	5,544	\$24,948,000	311		
2243790	K	AVENUE S	BMT SEA BEACH	T	O		1	STATE	6/18/2019	6	6.211	VGOOD	5,360	\$24,120,000	315		
2243800	K	AVENUE T	BMT SEA BEACH	T	O		1	STATE	6/19/2019	6	6.289	VGOOD	5,360	\$24,120,000	311		

**BRIDGE INVENTORY SORTED BY FEATURE CARRIED**

BRIDGE ID #	BORO	FEATURE CARRIED	FEATURE CROSSED	RAIL ROAD	BRIDGE TYPE	OTHER OWNER	SPANS	RATING SOURCE	INSPECTION DATE	GENERAL RECOMMENDATION**	CURRENT RATING*	VERBAL RATING	DECK AREA (SQ FT)	REPLACEMENT COST	CD	CD2	CD3
2243810	K	AVENUE U	BMT SEA BEACH	T	O		1	STATE	6/8/2020	5	5.476	GOOD	5,846	\$26,307,000	315		
2249440	R	BANCROFT AVENUE	STATEN ISLAND RAILWAY SOUTH SHORE	S	O		3	STATE	8/28/2019	5	5.016	GOOD	5,974	\$26,883,000	502		
2241180	B	BARRETTO STREET	AMTRAK - CSX	AX	O		1	STATE	12/7/2018	5	5.781	GOOD	5,433	\$24,448,500	202		
2231290	K	BAY 8TH STREET	BELT SYSTEM - SHORE PARKWAY		A		1	STATE	5/8/2019	6	6.254	VGOOD	4,950	\$22,275,000	311		
2243740	K	BAY PARKWAY	BMT SEA BEACH	T	O		4	STATE	5/7/2020	5	4.265	FAIR	16,800	\$75,600,000	311		
2249400	R	BEACH AVENUE	STATEN ISLAND RAILWAY SOUTH SHORE	S	O		2	STATE	8/8/2019	5	4.545	FAIR	3,800	\$17,100,000	502		
2248230	Q	BEACH CHANNEL DRIVE WESTBOUND	BEACH CHANNEL DRIVE EASTBOUND		O		1	STATE	6/4/2019	6	3.923	FAIR	3,568	\$16,056,000	484		
2243490	K	BEDFORD AVENUE	LIRR BAY RIDGE	N	O		6	STATE	8/7/2020	5	4.164	FAIR	15,447	\$69,511,500	314		
2241840	B	BEDFORD PARK BOULEVARD	METRO NORTH RR HAR	M	O		1	STATE	5/14/2020	4	4.964	FAIR	6,500	\$29,250,000	227	207	
2241930	B	BEDFORD PARK BOULEVARD	NYCTA IND YARDS	T	O		4	STATE	12/14/2020	6	4.556	FAIR	39,525	\$177,862,500	207		
2249580	R	BELFIELD AVENUE PEDESTRIAN BRIDGE	STATEN ISLAND RAILWAY SOUTH SHORE	S	PEDESTRIAN-O		5	CITY	8/25/2020	4	3.808	FAIR	400	\$1,800,000	503		
2247140	Q	BELL BOULEVARD	LIRR PORT WASHINGTON BRANCH	L	O		1	STATE	10/9/2019	6	5.492	GOOD	4,320	\$19,440,000	411		
2231790	Q	BELMONT PARK NORTH RAMP	BELT SYSTEM - CROSS ISLAND PARKWAY		AR	P	1	STATE	2/5/2020	5	4.672	FAIR	3,400	\$15,300,000	413		
2231770	Q	BELMONT PARK SOUTH RAMP	BELT SYSTEM - CROSS ISLAND PARKWAY		AR	P	1	STATE	2/24/2020	5	4.875	FAIR	3,161	\$14,224,500	413		
2243100	K	BEVERLEY ROAD	BMT SUBWAY, BRIGHTON	T	O		3	STATE	5/29/2020	4	3.634	FAIR	4,352	\$19,584,000	314		
2243900	K	BLAKE AVENUE	LIRR BAY RIDGE	N	O		3	STATE	9/8/2020	6	4.889	FAIR	4,955	\$22,297,500	316		
2248379	Q	BOATHOUSE BRIDGE	AQUACADE LAKE		WO	P	5	STATE	7/17/2019	5	4.048	FAIR	6,321	\$28,444,500	481		
2240410	Q	BORDEN AVENUE	DUTCH KILLS		WMO		2	STATE	7/12/2019	5	4.294	FAIR	8,400	\$37,800,000	402		
2270180	R	BOROUGH PLACE - RAMP A	STATEN ISLAND RAILWAY	S	O	F	1	STATE	6/15/2020	7	6.224	VGOOD	1,870	\$8,415,000	501		
2242110	B	BOSTON ROAD	BRONX RIVER		WO		1	STATE	3/16/2020	5	5.619	GOOD	5,276	\$23,742,000	227		
2229579	B	BOSTON ROAD	HUTCHINSON RIVER		WO		14	STATE	8/20/2020	4	4.167	FAIR	95,683	\$430,573,500	212		
2242100	B	BOTANICAL GARDEN ROAD	TWIN LAKES		WO	P	1	STATE	3/16/2020	5	6.048	VGOOD	2,074	\$9,333,000	227		
2247050	Q	BOWNE STREET	LIRR PORT WASHINGTON BRANCH	L	O		1	STATE	7/27/2020	6	4.426	FAIR	4,974	\$22,383,000	407		
2231829	Q	BRADDOCK AVENUE	BELT SYSTEM - CROSS ISLAND PARKWAY		A		2	STATE	8/18/2020	5	4.488	FAIR	10,600	\$47,700,000	413		
2249730	R	BRIDGE OVER DAM	NORTH END CLOVE LAKE		PEDESTRIAN-WO	P	1	CITY	8/20/2020	3	3.297	FAIR	1,000	\$4,500,000	501		
2230590	Q	BROADWAY / 37TH AVENUE	278I (BROOKLYN-QUEENS EXPRESSWAY)		A		2	STATE	10/1/2020	6	5.147	GOOD	16,000	\$72,000,000	402		
2240137	BM	BROADWAY BRIDGE	HARLEM RIVER	TM	WMO		3	STATE	11/22/2019	4	4.556	FAIR	48,944	\$211,248,000	112	207	208
2242072	B	BRONX BOULEVARD NORTHBOUND	BRONX RIVER		WO		1	STATE	4/11/2020	5	5.000	GOOD	1,808	\$8,136,000	212		
2242082	B	BRONX BOULEVARD NORTHBOUND	BRONX RIVER		WO		1	STATE	4/11/2020	4	4.115	FAIR	2,800	\$12,600,000	212		
2242071	B	BRONX BOULEVARD SOUTHBOUND	BRONX RIVER		WO		1	STATE	4/11/2020	5	5.286	GOOD	1,785	\$8,032,500	212		
2242081	B	BRONX BOULEVARD SOUTHBOUND	BRONX RIVER		WO		1	STATE	4/11/2020	4	4.077	FAIR	2,797	\$12,586,500	212		
2229560	B	BRONX PELHAM PARKWAY	AMTRAK - CSX	AX	A		3	STATE	12/14/2018	5	5.194	GOOD	24,591	\$110,659,500	211		
2075849	B	BRONX PELHAM PARKWAY	HUTCHINSON RIVER PARKWAY		A		2	STATE	4/15/2020	4	3.882	FAIR	18,056	\$81,252,000	210	211	
2065629	B	BRONX RIVER PARKWAY	BOSTON ROAD - BRONX ZOO		A		1	STATE	7/1/2019	5	4.000	FAIR	6,669	\$30,010,500	227		
224001B	M	TO BROOKLYN FROM FDR DRIVE	FRANKFORT AND PEARL STREETS		OE		31	STATE	8/13/2020	5	5.000	GOOD	52,302	\$235,359,000	101	103	
2243520	K	BROOKLYN AVENUE	LIRR BAY RIDGE	N	O		3	STATE	8/5/2019	6	6.016	VGOOD	4,582	\$20,619,000	318		
2240019	KM	BROOKLYN BRIDGE	EAST RIVER		WEO		75	STATE	11/6/2020	3	4.292	FAIR	515,054	\$2,317,743,000	103	302	101
2267860	K	BROOKLYN BRIDGE APPROACH	STORAGE (SANDS STREET)		O		1	STATE	4/22/2020	5	6.042	VGOOD	6,490	\$29,205,000	302		
2268350	K	BROOKLYN PROMENADE	278I EASTBOUND (BROOKLYN-QUEENS EXPRESSWAY)		PEDESTRIAN-A	P	35	CITY	10/29/2020	4	3.828	FAIR	46,184	\$207,828,000	302		
2230470	K	278I (BROOKLYN-QUEENS EXPRESSWAY)	JAY STREET		A		1	STATE	1/9/2020	5	6.600	VGOOD	5,092	\$22,914,000	302		
2230510	K	278I (BROOKLYN-QUEENS EXPRESSWAY)	NASSAU STREET		A		6	STATE	5/3/2020	5	5.493	GOOD	51,696	\$232,632,000	302		
2230460	K	278I (BROOKLYN-QUEENS EXPRESSWAY)	PEARL STREET		A		1	STATE	1/9/2020	5	5.933	GOOD	4,484	\$20,178,000	302		

**BRIDGE INVENTORY SORTED BY FEATURE CARRIED**

BRIDGE ID #	BORO	FEATURE CARRIED	FEATURE CROSSED	RAIL ROAD	BRIDGE TYPE	OTHER OWNER	SPANS	RATING SOURCE	INSPECTION DATE	GENERAL RECOMMENDATION**	CURRENT RATING*	VERBAL RATING	DECK AREA (SQ FT)	REPLACEMENT COST	CD	CD2	CD3
2230480	K	278I (BROOKLYN-QUEENS EXPRESSWAY)	PROSPECT STREET		A		1	STATE	1/21/2020	5	5.000	GOOD	8,690	\$39,105,000	302		
2230500	K	278I (BROOKLYN-QUEENS EXPRESSWAY)	RAMP TO BROOKLYN-QUEENS EXPRESSWAY EASTBOUND		A		1	STATE	1/27/2020	5	5.000	GOOD	1,306	\$5,877,000	302		
2230490	K	278I (BROOKLYN-QUEENS EXPRESSWAY)	SANDS STREET		A		1	STATE	1/30/2020	5	5.073	GOOD	11,025	\$49,612,500	302		
2230679	Q	278I (BROOKLYN-QUEENS EXPRESSWAY)	34TH AVENUE		A		1	STATE	7/3/2019	6	5.965	GOOD	14,746	\$66,357,000	402		
2230669	Q	278I (BROOKLYN-QUEENS EXPRESSWAY)	35TH AVENUE		A		1	STATE	8/5/2019	6	6.404	VGOOD	13,530	\$60,885,000	402		
2230430	K	278I (BROOKLYN-QUEENS EXPRESSWAY) RAMP TO BROOKLYN BRIDGE	PROSPECT STREET		A		1	STATE	1/2/2020	5	6.538	VGOOD	1,100	\$4,950,000	302		
2230780	Q	278I (BROOKLYN-QUEENS EXPRESSWAY EAST LEG)	30TH AVENUE		A		1	STATE	5/9/2019	6	6.033	VGOOD	7,071	\$31,819,500	403	401	
2230770	Q	278I (BROOKLYN-QUEENS EXPRESSWAY WEST LEG)	30TH AVENUE		A		1	STATE	5/8/2019	6	6.246	VGOOD	6,199	\$27,895,500	401		
2268498	K	278I EASTBOUND (BROOKLYN-QUEENS EXPRESSWAY)	278I WESTBOUND (BROOKLYN-QUEENS EXPRESSWAY) - PROMENADE		A		69	STATE	10/27/2020	4	3.862	FAIR	133,708	\$601,686,000	302		
2268518	K	278I EASTBOUND (BROOKLYN-QUEENS EXPRESSWAY)	278I WESTBOUND (BROOKLYN-QUEENS EXPRESSWAY)		A		5	STATE	6/14/2019	4	5.786	GOOD	9,349	\$42,070,500	302		
2268508	K	278I EASTBOUND (BROOKLYN-QUEENS EXPRESSWAY)	278I WESTBOUND (BROOKLYN-QUEENS EXPRESSWAY) - BROOKLYN BRIDGE		A		11	STATE	6/13/2019	4	4.840	FAIR	20,529	\$92,380,500	302		
2230450	K	278I EASTBOUND (BROOKLYN-QUEENS EXPRESSWAY)	ADAMS STREET		A		1	STATE	1/9/2020	5	6.667	VGOOD	2,618	\$11,781,000	302		
2230888	K	278I EASTBOUND (BROOKLYN-QUEENS EXPRESSWAY)	CADMAN PLAZA / 278I WESTBOUND		A		2	STATE	8/8/2020	5	5.020	GOOD	4,500	\$20,250,000	302		
2230858	K	278I EASTBOUND (BROOKLYN-QUEENS EXPRESSWAY)	JORALEMON STREET / BROOKLYN-QUEENS EXPRESSWAY WESTBOUND		A		1	STATE	10/31/2019	4	5.079	GOOD	2,564	\$11,538,000	302		
2230410	K	278I EASTBOUND (BROOKLYN-QUEENS EXPRESSWAY)	WASHINGTON STREET		A		1	STATE	4/16/2020	4	5.859	GOOD	2,500	\$11,250,000	302		
2230830	Q	278I NORTHBOUND (BROOKLYN-QUEENS EXPRESSWAY WEST LEG)	GRAND CENTRAL PARKWAY		A		2	STATE	4/27/2020	5	4.139	FAIR	7,176	\$32,292,000	401		
2230720	Q	278I SOUTHBOUND (BROOKLYN-QUEENS EXPRESSWAY EAST LEG)	278I NORTHBOUND (BROOKLYN-QUEENS EXPRESSWAY WEST LEG)		A		3	STATE	5/31/2019	6	5.493	GOOD	20,824	\$93,708,000	401		
2230750	Q	278I SOUTHBOUND (BROOKLYN-QUEENS EXPRESSWAY EAST LEG)	31ST AVENUE		A		1	STATE	5/23/2019	6	6.263	VGOOD	4,221	\$18,994,500	401	403	
2230740	Q	278I SOUTHBOUND (BROOKLYN-QUEENS EXPRESSWAY WEST LEG)	31ST AVENUE		A		1	STATE	5/23/2019	6	5.766	GOOD	5,420	\$24,390,000	401		
2230710	Q	278I SOUTHBOUND (BROOKLYN-QUEENS EXPRESSWAY WEST LEG)	32ND AVENUE		A		1	STATE	7/25/2019	6	6.246	VGOOD	5,240	\$23,580,000	401		
2230440	K	278I WESTBOUND (BROOKLYN-QUEENS EXPRESSWAY)	ADAMS STREET		A		1	STATE	1/9/2020	5	6.067	VGOOD	2,550	\$11,475,000	302		
2230887	K	278I WESTBOUND (BROOKLYN-QUEENS EXPRESSWAY)	CADMAN PLAZA		A		2	STATE	8/8/2020	4	4.966	FAIR	4,500	\$20,250,000	302		
2268517	K	278I WESTBOUND (BROOKLYN-QUEENS EXPRESSWAY)	FURMAN STREET		A		7	STATE	6/14/2019	4	5.227	GOOD	12,243	\$55,093,500	302		
2268497	K	278I WESTBOUND (BROOKLYN-QUEENS EXPRESSWAY)	FURMAN STREET - 278I EASTBOUND		A		45	STATE	9/20/2019	4	5.158	GOOD	86,406	\$388,827,000	302		
2230857	K	278I WESTBOUND (BROOKLYN-QUEENS EXPRESSWAY)	JORALEMON STREET		A		1	STATE	3/9/2020	5	6.030	VGOOD	2,100	\$9,450,000	302		
2230420	K	278I WESTBOUND (BROOKLYN-QUEENS EXPRESSWAY)	WASHINGTON STREET		A		1	STATE	4/16/2020	5	6.281	VGOOD	2,500	\$11,250,000	302		
2268507	K	278I WESTBOUND (BROOKLYN-QUEENS EXPRESSWAY)	YORK STREET		A		6	STATE	6/3/2019	4	4.442	FAIR	10,500	\$47,250,000	302		
Q00003	Q	BROOKVILLE PARK PEDESTRIAN AT 142ND AVENUE	BROOKVILLE PARK STREAM		PEDESTRIAN-WO	P	1	CITY	10/9/2020	4	4.238	FAIR	200	\$900,000	413		
Q00008	Q	BROOKVILLE PARK PEDESTRIAN AT 144TH AVENUE	BROOKVILLE PARK STREAM		PEDESTRIAN-WO	P	1	CITY	10/14/2020	5	5.000	GOOD	469	\$2,110,500	413		
Q00007	Q	BROOKVILLE PARK PEDESTRIAN AT 147TH AVENUE	BROOKVILLE PARK STREAM		PEDESTRIAN-WO	P	1	CITY	11/4/2020	4	4.375	FAIR	217	\$976,500	413		
Q00004	Q	BROOKVILLE PARK PEDESTRIAN AT CANEY ROAD	BROOKVILLE PARK STREAM		PEDESTRIAN-WO	P	1	CITY	10/20/2020	4	4.125	FAIR	201	\$904,500	413		
Q00006	Q	BROOKVILLE PARK PEDESTRIAN AT NEWHALL AVENUE	BROOKVILLE PARK STREAM		PEDESTRIAN-WO	P	1	CITY	10/15/2020	4	3.643	FAIR	271	\$1,219,500	413		
2241099	B	BRUCKNER BOULEVARD	CSX TRANS - PORT MORRIS	X	O		1	STATE	7/1/2020	6	6.350	VGOOD	6,688	\$30,096,000	201		
224006A	B	FROM BRUCKNER BOULEVARD	PARKING AREA		OR		5	STATE	8/14/2019	6	6.377	VGOOD	14,037	\$63,166,500	201		
224005B	B	TO BRUCKNER BOULEVARD	RELIEF		OR		4	STATE	10/18/2019	7	5.899	GOOD	19,990	\$89,955,000	201		
2266540	B	BRUCKNER EXPRESSWAY	BRUCKNER BOULEVARD		A		2	STATE	6/21/2019	4	4.460	FAIR	36,465	\$164,092,500	201		
2076929	B	BRUCKNER EXPRESSWAY	CSX - HUNTS POINT	X	A		1	STATE	7/16/2019	5	5.607	GOOD	3,800	\$17,100,000	202		
2075352	B	BRUCKNER EXPRESSWAY NORTHBOUND	AMTRAK - CSX	AX	A		1	STATE	10/15/2020	6	5.885	GOOD	10,900	\$49,050,000	202		
2066672	B	BRUCKNER EXPRESSWAY NORTHBOUND	BRONX RIVER		WA		8	STATE	12/31/2020	4	5.254	GOOD	22,300	\$100,350,000	202	209	
2076109	B	BRUCKNER EXPRESSWAY NORTHBOUND SERVICE ROAD	HUTCHINSON RIVER PARKWAY		A		2	STATE	7/1/2019	5	5.529	GOOD	7,800	\$35,100,000	210		
1066610	B	BRUCKNER EXPRESSWAY SERVICE ROAD	WESTCHESTER CREEK		WMA		17	STATE	2/4/2020	4	3.806	FAIR	35,000	\$157,500,000	209		
2075351	B	BRUCKNER EXPRESSWAY SOUTHBOUND	AMTRAK - CSX	AX	A		1	STATE	10/15/2020	6	4.968	FAIR	11,623	\$52,303,500	202		

**BRIDGE INVENTORY SORTED BY FEATURE CARRIED**

BRIDGE ID #	BORO	FEATURE CARRIED	FEATURE CROSSED	RAIL ROAD	BRIDGE TYPE	OTHER OWNER	SPANS	RATING SOURCE	INSPECTION DATE	GENERAL RECOMMENDATION**	CURRENT RATING*	VERBAL RATING	DECK AREA (SQ FT)	REPLACEMENT COST	CD	CD2	CD3
2066671	B	BRUCKNER EXPRESSWAY SOUTHBOUND	BRONX RIVER		WA		3	STATE	11/5/2019	5	5.611	GOOD	12,400	\$55,800,000	202	209	
2076129	B	BRUCKNER EXPRESSWAY SOUTHBOUND SERVICE ROAD	HUTCHINSON RIVER PARKWAY		A		2	STATE	3/10/2020	5	6.559	VGOOD	7,366	\$33,147,000	210		
2241210	B	BRYANT AVENUE	AMTRAK - CSX	AX	O		1	STATE	10/13/2020	7	6.288	VGOOD	4,065	\$18,292,500	202		
2230790	Q	BULOVA AVENUE	278I (BROOKLYN-QUEENS EXPRESSWAY WEST LEG)		A		2	STATE	4/21/2020	5	5.361	GOOD	3,300	\$14,850,000	401		
2269770	R	BUS STATION ENTRANCE RAMP	STATEN ISLAND RAILWAY	S	O	F	19	STATE	11/1/2019	6	4.903	FAIR	39,376	\$177,192,000	501		
2269790	R	BUS STATION EXIT RAMP	STATEN ISLAND RAILWAY	S	O	F	7	STATE	10/27/2020	6	5.333	GOOD	28,182	\$126,819,000	501		
2269740	R	BUS STATION NORTH	STATEN ISLAND RAILWAY - FERRY TERMINAL	S	O	F	12	STATE	11/21/2020	6	6.607	VGOOD	64,959	\$292,315,500	501		
2269750	R	BUS STATION SOUTH	STATEN ISLAND RAILWAY - PARKING LOT	S	O	F	12	STATE	11/22/2020	5	5.625	GOOD	155,022	\$697,599,000	501		
2247460	Q	CALDWELL AVENUE	CSX TRANSPORT	X	O		1	STATE	12/12/2020	6	5.846	GOOD	2,218	\$9,981,000	405		
2271640	M	CARL SCHURZ PARK PEDESTRIAN	PARK PATH AT EAST 87TH STREET		PEDESTRIAN-O	P	1	CITY	10/23/2020	5	4.867	FAIR	418	\$1,881,000	108		
2243290	K	CARLTON AVENUE	LIRR ATLANTIC AVENUE	L	O		4	STATE	8/22/2019	7	5.833	GOOD	15,400	\$69,300,000	302		
2240260	K	CARROLL STREET	GOWANUS CANAL		WMO		2	STATE	11/24/2020	5	4.941	FAIR	3,024	\$13,608,000	306		
2243220	K	CARROLL STREET PEDESTRIAN BRIDGE	FRANKLIN SHUTTLE	T	PEDESTRIAN-O		3	CITY	9/29/2020	5	5.042	GOOD	600	\$2,700,000	309		
2243050	K	CATON AVENUE	BMT SUBWAY, BRIGHTON	T	O		4	STATE	5/31/2019	4	4.029	FAIR	20,800	\$93,600,000	314		
2249390	R	CEDARVIEW AVENUE PEDESTRIAN BRIDGE	STATEN ISLAND RAILWAY SOUTH SHORE	S	PEDESTRIAN-O		5	CITY	8/20/2020	4	3.912	FAIR	625	\$2,812,500	503		
2246100	M	CENTER DRIVE	TRANSVERSE ROAD #1		O	P	1	STATE	1/28/2020	4	4.308	FAIR	6,110	\$27,495,000	164		
2246050	M	CENTER DRIVE (DRIPROCK ARCH)	PEDESTRIAN OPPOSITE 63RD STREET		O	P	1	STATE	1/8/2020	5	5.269	GOOD	1,793	\$8,068,500	164		
2244050	K	CENTER DRIVE (NETHERMEAD ARCHES)	PEDESTRIAN PATH AND STREAM		WO	P	3	STATE	4/19/2019	5	5.824	GOOD	7,020	\$31,590,000	355		
2246070	M	CENTER DRIVE (PLAYMATES ARCH)	PEDESTRIAN PATH OPPOSITE 65TH STREET		O	P	1	CITY	8/21/2020	4	4.667	FAIR	1,129	\$5,080,500	164		
2268480	M	CHAMBERS STREET PEDESTRIAN BRIDGE	ROUTE 9A - WEST STREET		PEDESTRIAN-O		10	CITY	6/19/2020	5	5.137	GOOD	7,481	\$33,664,500	101		
2249880	R	CHELSEA ROAD	SAWMILL CREEK		WO		1	STATE	4/22/2019	6	6.465	VGOOD	2,205	\$9,922,500	502		
2240210	B	CITY ISLAND ROAD	EASTCHESTER BAY		WO		3	STATE	12/9/2019	7	6.611	VGOOD	38,914	\$175,113,000	228		
2241710	B	CLAREMONT PARKWAY	METRO NORTH RR HAR	M	O		1	STATE	4/23/2020	6	6.356	VGOOD	6,000	\$27,000,000	203		
2231940	Q	CLINTONVILLE STREET	BELT SYSTEM - CROSS ISLAND PARKWAY		A		2	STATE	1/28/2020	5	4.529	FAIR	7,400	\$33,300,000	407		
2249490	R	CLOVE ROAD	STATEN ISLAND RAILWAY SOUTH SHORE	S	O		3	STATE	10/5/2020	6	5.208	GOOD	5,236	\$23,562,000	502		
2231570	Q	COHANCY STREET	BELT SYSTEM - SOUTHERN PARKWAY		A		2	STATE	4/2/2020	5	5.368	GOOD	6,441	\$28,984,500	410		
2230870	K	COLUMBIA HEIGHTS	278I (BROOKLYN-QUEENS EXPRESSWAY)		A		1	STATE	8/9/2020	4	5.233	GOOD	12,095	\$54,427,500	302		
2241590	B	CONCOURSE VILLAGE EAST	METRO NORTH RR HAR	M	O		1	STATE	5/22/2020	4	3.875	FAIR	12,077	\$54,346,500	204		
2244460	K	CONDUIT BOULEVARD NORTHBOUND	ATLANTIC AVENUE EASTBOUND		O		1	STATE	10/2/2020	5	4.154	FAIR	3,864	\$17,388,000	305		
2243440	K	CONEY ISLAND AVENUE	LIRR BAY RIDGE	N	O		1	STATE	8/11/2020	5	4.455	FAIR	3,231	\$14,539,500	312		
2231380	K	CONEY ISLAND AVENUE	BELT SYSTEM - SHORE PARKWAY		A		4	STATE	10/11/2019	6	4.722	FAIR	19,866	\$89,397,000	313		
2230390	K	CONGRESS STREET	278I (BROOKLYN-QUEENS EXPRESSWAY)		A		2	STATE	3/23/2020	6	6.456	VGOOD	5,000	\$22,500,000	306		
2241850	B	CONNECTION ROAD BETWEEN MOSHOLU PARKWAY AND MOSHOLU PARKWAY	METRO NORTH RR HAR	M	O	PD	1	STATE	5/14/2020	4	4.656	FAIR	5,515	\$24,817,500	227	207	
2246510	M	CORBIN PLACE OVERPASS	CORBIN PLACE		O	P	1	STATE	1/17/2020	5	5.154	GOOD	2,257	\$10,156,500	112		
2232029	M	CORLEARS PARK ROAD	FDR DRIVE		A	P	4	STATE	10/8/2020	4	4.415	FAIR	4,247	\$19,111,500	103		
2247130	Q	CORPORAL KENNEDY STREET	LIRR PORT WASHINGTON BRANCH	L	O		1	STATE	10/8/2019	6	5.678	GOOD	3,394	\$15,273,000	411		
2243110	K	CORTELYOU ROAD	BMT SUBWAY, BRIGHTON	T	O		3	STATE	7/23/2019	6	5.250	GOOD	4,810	\$21,645,000	314		
2231880	Q	CROCHERON PARK PEDESTRIAN	BELT SYSTEM - CROSS ISLAND PARKWAY		PEDESTRIAN-A	P	9	CITY	5/28/2020	3	3.431	FAIR	2,300	\$10,350,000	411		
2243040	K	CROOKE AVENUE	BMT SUBWAY, BRIGHTON	T	O		4	STATE	5/20/2020	4	3.912	FAIR	6,000	\$27,000,000	314		
2231340	K	CROPSY AVENUE	BELT SYSTEM - SHORE PARKWAY		A		2	STATE	4/28/2020	5	4.181	FAIR	13,100	\$58,950,000	313		
2240302	K	CROPSY AVENUE NORTHBOUND	CONEY ISLAND CREEK		WO		3	STATE	10/4/2019	5	4.185	FAIR	9,400	\$42,300,000	313		
2240301	K	CROPSY AVENUE SOUTHBOUND	CONEY ISLAND CREEK		WO		3	STATE	10/2/2019	5	4.167	FAIR	9,400	\$42,300,000	313		



**BRIDGE INVENTORY SORTED BY FEATURE CARRIED**

BRIDGE ID #	BORO	FEATURE CARRIED	FEATURE CROSSED	RAIL ROAD	BRIDGE TYPE	OTHER OWNER	SPANS	RATING SOURCE	INSPECTION DATE	GENERAL RECOMMENDATION**	CURRENT RATING*	VERBAL RATING	DECK AREA (SQ FT)	REPLACEMENT COST	CD	CD2	CD3
2248039	Q	CROSS BAY BOULEVARD	NASSAU EXPRESSWAY - ROUTE 27		O		2	STATE	7/26/2019	6	5.611	GOOD	15,840	\$71,280,000	410		
2231559	Q	CROSS BAY BOULEVARD	BELT SYSTEM - SHORE PARKWAY		A		4	STATE	5/26/2020	5	4.833	FAIR	24,690	\$111,105,000	410		
2231760	Q	BELT SYSTEM - CROSS ISLAND PARKWAY	DUTCH BROADWAY-115TH AVENUE		A		1	STATE	2/24/2020	4	4.767	FAIR	7,290	\$32,805,000	413		
2266770	Q	BELT SYSTEM - CROSS ISLAND PARKWAY	LAURELTON PARKWAY		A		1	STATE	3/16/2020	5	6.308	VGOOD	6,912	\$31,104,000	413		
2231900	Q	BELT SYSTEM - CROSS ISLAND PARKWAY	TOTTEN AVENUE		A		1	STATE	6/26/2020	5	4.891	FAIR	4,788	\$21,546,000	407		
2242030	B	CROTONA AVENUE	EAST FORDHAM ROAD		O		2	STATE	3/19/2020	5	5.447	GOOD	7,968	\$35,856,000	206		
2243230	K	CROWN STREET	FRANKLIN SHUTTLE	T	O		3	STATE	6/25/2019	5	6.139	VGOOD	4,060	\$18,270,000	309		
2230040	Q	CYPRESS HILLS STREET	JACKIE ROBINSON PARKWAY		A		1	STATE	4/15/2020	5	5.567	GOOD	5,098	\$22,941,000	405		
2249160	R	DE HART AVENUE	B&O RR (ABANDONED)	O	O		4	STATE	4/17/2019	6	5.645	GOOD	6,700	\$30,150,000	501		
2232030	M	DELANCEY STREET PEDESTRIAN BRIDGE	FDR DRIVE		PEDESTRIAN-A	P	12	CITY	4/21/2020	4	4.343	FAIR	3,390	\$15,255,000	103		
2076640	B	DEPOT PLACE	METRO NORTH RR HUDSON	XM	O		11	STATE	9/29/2020	5	4.492	FAIR	26,566	\$119,547,000	204		
2243130	K	DITMAS AVENUE	BMT SUBWAY, BRIGHTON	T	O		1	STATE	7/24/2019	6	6.364	VGOOD	5,150	\$23,175,000	314		
2243120	K	DORCHESTER ROAD	BMT SUBWAY, BRIGHTON	T	O		1	STATE	6/1/2020	6	5.610	GOOD	5,020	\$22,590,000	314		
2266139	Q	DOUGLSTON PARKWAY	BELT SYSTEM - CROSS ISLAND PARKWAY NORTHBOUND		A		1	STATE	3/3/2020	5	5.105	GOOD	6,597	\$29,686,500	411		
2266129	Q	DOUGLSTON PARKWAY	BELT SYSTEM - CROSS ISLAND PARKWAY SOUTHBOUND		A		1	STATE	2/28/2020	5	6.211	VGOOD	4,698	\$21,141,000	411		
2247170	Q	DOUGLSTON PARKWAY	LIRR PORT WASHINGTON BRANCH	L	O		3	STATE	7/30/2020	5	3.758	FAIR	6,360	\$28,620,000	411		
2242260	B	EAGLE AVENUE	EAST 161ST STREET		O		1	STATE	4/13/2020	5	4.517	FAIR	2,800	\$12,600,000	201	203	
2243420	K	EAST 3RD STREET	LIRR BAY RIDGE	N	O		1	STATE	7/24/2019	6	6.733	VGOOD	1,840	\$8,280,000	312		
2232050	M	EAST 6TH STREET PEDESTRIAN BRIDGE	FDR DRIVE		PEDESTRIAN-A	P	19	CITY	4/16/2020	4	3.674	FAIR	2,200	\$9,900,000	103		
2233020	M	EAST 10TH STREET PEDESTRIAN BRIDGE	FDR DRIVE		PEDESTRIAN-A	P	21	CITY	6/20/2020	5	4.673	FAIR	2,754	\$12,393,000	103		
2231390	K	EAST 12TH STREET	BELT SYSTEM - SHORE PARKWAY		A		4	STATE	4/9/2020	5	5.333	GOOD	15,908	\$71,586,000	315		
2243450	K	EAST 14TH STREET BRIDGE	LIRR BAY RIDGE	N	O		1	STATE	8/12/2020	5	4.455	FAIR	1,775	\$7,987,500	314		
2233080	K	EAST 14TH STREET PEDESTRIAN BRIDGE	BELT SYSTEM - SHORE PARKWAY		PEDESTRIAN-A		14	CITY	7/17/2020	4	4.323	FAIR	4,700	\$21,150,000	315		
2243460	K	EAST 15TH STREET PEDESTRIAN BRIDGE	LIRR BAY RIDGE	N	PEDESTRIAN-O		3	CITY	7/31/2020	5	5.507	GOOD	900	\$4,050,000	314		
2243080	K	EAST 18TH STREET - CHURCH AVENUE	BMT SUBWAY, BRIGHTON	T	O		4	STATE	5/31/2019	4	4.310	FAIR	18,200	\$81,900,000	314		
2232070	M	EAST 25TH STREET PEDESTRIAN BRIDGE	FDR DRIVE		PEDESTRIAN-A		3	CITY	6/20/2020	4	4.433	FAIR	1,700	\$7,650,000	106		
2232100	M	EAST 51ST STREET PEDESTRIAN BRIDGE	FDR DRIVE		PEDESTRIAN-A	P	6	CITY	6/28/2020	4	4.400	FAIR	2,800	\$12,600,000	106		
2233040	M	EAST 60TH STREET	FDR DRIVE		A	P	17	STATE	6/10/2019	4	4.716	FAIR	23,000	\$103,500,000	108		
224004A	M	TO EAST 60TH STREET FROM QUEENS	FIRST AVENUE		OE		13	STATE	3/13/2020	5	6.042	VGOOD	14,820	\$66,690,000	108		
224004C	M	TO EAST 62ND STREET FROM QUEENS	EAST 60TH STREET- EAST 61ST STREET		OE		10	STATE	4/22/2020	5	5.125	GOOD	18,744	\$84,348,000	108		
2246030	M	EAST 62ND STREET PEDESTRIAN BRIDGE (GAPSTOW BRIDGE)	THE POND		PEDESTRIAN-O	P	1	CITY	8/27/2020	4	4.241	FAIR	1,400	\$6,300,000	164		
2232110	M	EAST 63RD STREET PEDESTRIAN BRIDGE	FDR DRIVE		PEDESTRIAN-A	P	11	UNIVERSITY	11/29/2017	6	5.410	GOOD	2,100	\$9,450,000	108		
2232120	M	EAST 71ST STREET PEDESTRIAN BRIDGE	FDR DRIVE		PEDESTRIAN-A	P	19	HOSPITAL	10/18/2019	4	4.718	FAIR	3,700	\$16,650,000	108		
M00005	M	EAST 72ND STREET	FDR DRIVE SOUTHBOUND EXIT RAMP		PEDESTRIAN-A		1	CITY	4/30/2020	5	4.125	FAIR	1,430	\$6,435,000	108		
2246450	M	EAST 77TH STREET PEDESTRIAN (GLADE ARCH)	PEDESTRIAN PATH OPPOSITE EAST 77TH STREET		PEDESTRIAN-O	P	1	CITY	3/3/2020	5	4.138	FAIR	5,000	\$22,500,000	164		
2232140	M	EAST 78TH STREET PEDESTRIAN BRIDGE	FDR DRIVE		PEDESTRIAN-A	P	13	CITY	7/23/2020	6	6.611	VGOOD	5,226	\$23,517,000	108		
2269820	M	EAST 81ST STREET PEDESTRIAN BRIDGE	FDR DRIVE NORTHBOUND		PEDESTRIAN-A	P	3	CITY	6/8/2014	3	3.439	FAIR	600	\$2,700,000	108		
2246380	M	EAST 86TH STREET PEDESTRIAN (SOUTHEAST RESERVOIR BRIDGE)	BRIDLE PATH		PEDESTRIAN-O	P	1	CITY	9/17/2020	5	5.000	GOOD	700	\$3,150,000	164		
2245319	M	EAST 97TH STREET	METRO NORTH MAIN LINE	M	O		1	STATE	11/18/2020	5	5.881	GOOD	3,363	\$15,133,500	111		
2232180	M	EAST 103RD STREET PEDESTRIAN BRIDGE	FDR DRIVE		PEDESTRIAN-A		18	CITY	7/24/2020	4	4.659	FAIR	6,807	\$30,631,500	111		
2232190	M	EAST 111TH STREET PEDESTRIAN BRIDGE	FDR DRIVE		PEDESTRIAN-A	P	9	CITY	8/5/2020	4	4.114	FAIR	4,254	\$19,143,000	111		
2232200	M	EAST 120TH STREET PEDESTRIAN BRIDGE	FDR DRIVE		PEDESTRIAN-A	P	18	CITY	9/30/2019	4	4.143	FAIR	3,978	\$17,901,000	111		

**BRIDGE INVENTORY SORTED BY FEATURE CARRIED**

BRIDGE ID #	BORO	FEATURE CARRIED	FEATURE CROSSED	RAIL ROAD	BRIDGE TYPE	OTHER OWNER	SPANS	RATING SOURCE	INSPECTION DATE	GENERAL RECOMMENDATION**	CURRENT RATING*	VERBAL RATING	DECK AREA (SQ FT)	REPLACEMENT COST	CD	CD2	CD3
2246620	M	EAST 128TH STREET PEDESTRIAN BRIDGE	3RD AVENUE BRIDGE APPROACH		PEDESTRIAN-O		18	CITY	7/22/2020	4	3.872	FAIR	2,300	\$10,350,000	111		
2246990	M	EAST 129TH STREET PEDESTRIAN BRIDGE	3RD AVENUE BRIDGE RAMP		PEDESTRIAN-O	P	5	CITY	10/6/2020	4	4.429	FAIR	1,046	\$4,707,000	111		
2241550	B	EAST 144TH STREET	METRO NORTH RR HAR	M	O		2	STATE	10/23/2019	6	5.306	GOOD	8,415	\$37,867,500	201		
2241129	B	EAST 149TH STREET	AMTRAK - CSX	AX	O		2	STATE	12/13/2018	5	5.141	GOOD	18,258	\$82,161,000	201	202	
2241560	B	EAST 149TH STREET	METRO NORTH RR HAR	M	O		8	STATE	6/5/2020	5	5.339	GOOD	29,800	\$134,100,000	201	204	
2241050	B	EAST 149TH STREET/JACKSON AVENUE	CSX PORT MORRIS - (ABANDONED)		O		1	STATE	4/15/2020	5	4.450	FAIR	59,400	\$267,300,000	201		
2270030	B	EAST 156TH STREET	ACCESS TO HOUSING		O	ED	16	STATE	11/11/2020	4	3.910	FAIR	50,830	\$228,735,000	204		
2241010	B	EAST 156TH STREET	CSX PORT MORRIS - (ABANDONED)		O		1	STATE	3/20/2018	5	4.983	FAIR	2,380	\$10,710,000	201		
2241600	B	EAST 158TH STREET	METRO NORTH RR HAR	M	O		1	STATE	11/15/2019	5	4.836	FAIR	3,400	\$15,300,000	204		
2241020	B	EAST 161ST STREET	CSX PORT MORRIS - (ABANDONED)		O		1	STATE	2/8/2018	6	6.492	VGOOD	12,800	\$57,600,000	203		
2241610	B	EAST 161ST STREET	METRO NORTH RR HAR	M	O		1	STATE	10/17/2019	5	5.000	GOOD	6,643	\$29,893,500	204	203	
2241620	B	EAST 162ND STREET	METRO NORTH RR HAR	M	O		1	STATE	6/5/2020	5	4.927	FAIR	4,665	\$20,992,500	203		
2241630	B	EAST 165TH STREET	METRO NORTH RR HAR	M	O		1	STATE	6/5/2020	4	4.964	FAIR	16,442	\$73,989,000	203		
2241650	B	EAST 167TH STREET	METRO NORTH RR HAR	M	O		1	STATE	5/5/2020	5	5.673	GOOD	3,560	\$16,020,000	203		
2241660	B	EAST 168TH STREET	METRO NORTH RR HAR	M	O		1	STATE	5/5/2020	5	5.810	GOOD	5,896	\$26,532,000	203		
2241670	B	EAST 169TH STREET	METRO NORTH RR HAR	M	O		1	STATE	5/6/2020	4	3.594	FAIR	3,100	\$13,950,000	203		
2241680	B	EAST 170TH STREET	METRO NORTH RR HAR	M	O		1	STATE	5/7/2020	6	6.367	VGOOD	3,239	\$14,575,500	203		
2241720	B	EAST 173RD STREET	METRO NORTH RR HAR	M	O		1	STATE	4/22/2020	5	4.294	FAIR	3,000	\$13,500,000	203		
2066720	B	EAST 174TH STREET	SHERIDAN EXPRESSWAY/AMTRAK	A	A		13	STATE	11/7/2018	4	4.014	FAIR	45,942	\$206,739,000	209	203	
2241740	B	EAST 175TH STREET	METRO NORTH RR HAR	M	O		1	STATE	5/7/2020	4	4.203	FAIR	3,584	\$16,128,000	206		
2241269	B	EAST 177TH STREET	AMTRAK - CSX	AX	O		3	STATE	10/8/2020	6	5.375	GOOD	16,606	\$74,727,000	206		
2241770	B	EAST 178TH STREET PEDESTRIAN BRIDGE	METRO NORTH RR HAR	M	PEDESTRIAN-O		1	CITY	3/11/2018	5	4.921	FAIR	731	\$3,289,500	206		
2241780	B	EAST 179TH STREET PEDESTRIAN BRIDGE	METRO NORTH RR HAR	M	PEDESTRIAN-O		6	CITY	3/12/2018	5	5.246	GOOD	1,011	\$4,549,500	206		
2242400	B	EAST 180TH STREET	BRONX RIVER		WO		1	STATE	7/23/2020	5	4.059	FAIR	4,550	\$20,475,000	206	227	
2241790	B	EAST 180TH STREET	METRO NORTH RR HAR	M	O		1	STATE	5/19/2020	4	3.800	FAIR	4,960	\$22,320,000	206		
2241800	B	EAST 183RD STREET	METRO NORTH RR HAR	M	O		1	STATE	5/20/2020	4	4.163	FAIR	4,080	\$18,360,000	206		
2241820	B	EAST 187TH STREET	METRO NORTH RR HAR	M	O		1	STATE	5/14/2020	5	5.182	GOOD	3,780	\$17,010,000	206		
2241810	B	EAST 188TH STREET	METRO NORTH RR HAR	M	O		1	STATE	5/2/2020	4	4.345	FAIR	5,300	\$23,850,000	206		
2242459	B	EAST 233RD STREET	BRONX RIVER		WO		1	STATE	3/16/2020	4	4.269	FAIR	7,113	\$32,008,500	212		
2242460	B	EAST 233RD STREET	ENTRANCE ROAD BRONX RIVER PARKWAY		O		1	STATE	3/2/2020	5	5.714	GOOD	5,300	\$23,850,000	212		
2241870	B	EAST 233RD STREET	METRO NORTH RR HAR	M	O		1	STATE	5/15/2020	5	5.441	GOOD	7,664	\$34,488,000	212	207	
2241890	B	EAST 241ST STREET	BRP, METRO NORTH HAR	M	WO		24	STATE	1/20/2021	4	3.583	FAIR	49,500	\$222,750,000	212		
2244030	K	EAST DRIVE	BRIDLE PATH NEAR ZOO		O	P	1	STATE	4/17/2019	5	6.632	VGOOD	2,000	\$9,000,000	355		
2246110	M	EAST DRIVE	TRANSVERSE ROAD #1		O	P	1	STATE	2/14/2020	4	4.654	FAIR	5,338	\$24,021,000	164		
2246230	M	EAST DRIVE	TRANSVERSE ROAD #2		O	P	1	STATE	2/21/2020	5	5.115	GOOD	5,207	\$23,431,500	164		
2246250	M	EAST DRIVE	TRANSVERSE ROAD #3		O	P	1	STATE	1/16/2020	4	4.308	FAIR	4,612	\$20,754,000	164		
2246270	M	EAST DRIVE	TRANSVERSE ROAD #4		O	P	1	STATE	2/7/2020	5	3.846	FAIR	5,535	\$24,907,500	164		
2244040	K	EAST DRIVE (EAST WOOD ARCH)	PEDESTRIAN PATH NEAR CENTER DRIVE		O	P	1	CITY	7/7/2020	4	3.933	FAIR	1,066	\$4,797,000	355		
2244010	K	EAST DRIVE (ENDALE ARCH)	PEDESTRIAN PATH NEAR GRAND ARMY PLAZA		O	P	1	CITY	6/16/2020	5	5.000	GOOD	1,533	\$6,898,500	355		
2246069	M	EAST DRIVE (GREEN GAP ARCH)	PEDESTRIAN PATH BETWEEN 63RD AND 64TH STREETS		O	P	1	STATE	1/15/2020	5	4.192	FAIR	2,158	\$9,711,000	164		
2246350	M	EAST DRIVE (GREYWACKE ARCH)	PEDESTRIAN PATH OPPOSITE EAST 80TH STREET		O	P	1	CITY	5/9/2019	4	3.733	FAIR	1,266	\$5,697,000	164		
2246470	M	EAST DRIVE (HUDDLESTONE ARCH)	THE LOCH		WO	P	1	STATE	1/14/2020	5	4.500	FAIR	1,228	\$5,526,000	164		

**BRIDGE INVENTORY SORTED BY FEATURE CARRIED**

BRIDGE ID #	BORO	FEATURE CARRIED	FEATURE CROSSED	RAIL ROAD	BRIDGE TYPE	OTHER OWNER	SPANS	RATING SOURCE	INSPECTION DATE	GENERAL RECOMMENDATION**	CURRENT RATING*	VERBAL RATING	DECK AREA (SQ FT)	REPLACEMENT COST	CD	CD2	CD3
2246040	M	EAST DRIVE (INSCOPE ARCH)	PEDESTRIAN PATH OPPOSITE EAST 62ND STREET		O	P	1	CITY	6/9/2020	4	4.400	FAIR	1,515	\$6,817,500	164		
2246170	M	EAST DRIVE (TREFOIL ARCH)	PEDESTRIAN PATH OPPOSITE EAST 73RD STREET		O	P	1	STATE	1/21/2020	5	5.537	GOOD	1,882	\$8,469,000	164		
2246130	M	EAST DRIVE (WILLOWDELL ARCH)	PEDESTRIAN PATH OPPOSITE EAST 67TH STREET		O	P	1	CITY	4/20/2020	3	3.567	FAIR	666	\$2,997,000	164		
2249720	R	EAST FOOTBRIDGE	CLOVE LAKE		PEDESTRIAN- WO	P	2	CITY	8/18/2020	4	4.189	FAIR	900	\$4,050,000	501		
2242010	B	EAST FORDHAM ROAD	BRONX RIVER		WO		1	STATE	4/17/2020	5	5.286	GOOD	9,557	\$43,006,500	227		
2242350	B	EAST FORDHAM ROAD	GRAND CONCOURSE		O		1	STATE	3/23/2020	6	6.692	VGOOD	10,300	\$46,350,000	205	207	
2241270	B	EAST TREMONT AVENUE	AMTRAK - CSX	AX	O		2	STATE	10/13/2020	5	4.889	FAIR	22,300	\$100,350,000	209	211	
2242149	B	EAST TREMONT AVENUE	BRONX RIVER		WO		2	STATE	5/6/2020	5	4.722	FAIR	12,900	\$58,050,000	206		
2075820	B	EAST TREMONT AVENUE	HUTCHINSON RIVER PARKWAY		A		2	STATE	9/27/2019	5	4.250	FAIR	10,200	\$45,900,000	210		
2241760	B	EAST TREMONT AVENUE	METRO NORTH RR HAR	M	O		1	STATE	10/16/2019	6	5.483	GOOD	8,541	\$38,434,500	206		
2241900	B	EASTCHESTER ROAD	NYCTA-DYRE AVE LN	T	O		3	STATE	12/8/2020	5	4.958	FAIR	13,500	\$60,750,000	212		
2243279	K	EASTERN PARKWAY	FRANKLIN SHUTTLE	T	O		1	STATE	6/11/2020	5	4.615	FAIR	7,686	\$34,587,000	309	308	
2240047	MQ	ED KOCH - QUEENSBORO BRIDGE (LOWER LEVEL)	EAST RIVER	AL	WEO		53	STATE	10/28/2020	5	4.029	FAIR	627,750	\$2,824,875,000	108	402	401
2240048	MQ	ED KOCH - QUEENSBORO BRIDGE (UPPER LEVEL)	EAST RIVER - LL		WEO		37	STATE	10/28/2020	5	3.588	FAIR	322,260	\$1,450,170,000	108	402	401
2247470	Q	ELIOT AVENUE	CSX TRANSPORT	X	O		1	STATE	11/1/2019	5	6.068	VGOOD	2,960	\$13,320,000	405		
2247550	Q	ELIOT AVENUE	LIRR MONTAUK DIV	L	O		2	STATE	9/19/2019	6	5.716	GOOD	9,550	\$42,975,000	405		
2248160	Q	ELIOT AVENUE	QUEENS BOULEVARD		O		2	STATE	7/16/2020	5	4.824	FAIR	13,875	\$62,437,500	406		
2269600	K	ERSKINE STREET	BELT SYSTEM - SHORE PARKWAY		A		1	STATE	6/30/2020	6	5.750	GOOD	8,325	\$37,462,500	305		
2241200	B	FAILE STREET	AMTRAK - CSX	AX	O		1	STATE	12/5/2018	6	6.062	VGOOD	5,970	\$26,865,000	202		
2231620	Q	FARMERS BOULEVARD	BELT SYSTEM - SOUTHERN PARKWAY		A		2	STATE	5/8/2020	4	5.421	GOOD	6,432	\$28,944,000	413		
2232060	M	FDR DRIVE	AVENUE C TO EAST 23RD STREET		A		46	STATE	8/26/2020	5	4.493	FAIR	183,164	\$824,238,000	106		
2268650	M	FDR DRIVE NORTHBOUND EAST 42ND STREET TO EAST 49TH STREET	EAST RIVER SHORELINE		A		119	STATE	8/7/2020	4	3.458	FAIR	24,839	\$111,775,500	106		
224001D	M	TO FDR DRIVE NORTHBOUND	PEARL STREET		OE		30	STATE	4/23/2020	5	4.695	FAIR	49,383	\$222,223,500	101	103	
223201A	M	FDR DRIVE NORTHBOUND OFF RAMP	FDR DRIVE & SOUTH STREET		AR		17	STATE	5/13/2020	6	4.754	FAIR	23,436	\$105,462,000	101		
223204A	M	FDR DRIVE NORTHBOUND RAMP TO HOUSTON STREET	RELIEF		AR		4	STATE	1/14/2020	5	5.727	GOOD	7,450	\$33,525,000	103		
2233038	M	FDR DRIVE SOUTHBOUND	FDR DRIVE NORTHBOUND / EAST 62ND STREET		A		34	STATE	10/1/2020	6	5.855	GOOD	54,682	\$246,069,000	106	108	
223201C	M	FDR DRIVE SOUTHBOUND OFF RAMP	SOUTH STREET		AR		8	STATE	2/10/2020	5	5.627	GOOD	11,924	\$53,658,000	103		
2229520	B	FIELDSTON ROAD	HENRY HUDSON PARKWAY		A		1	STATE	6/7/2019	5	6.115	VGOOD	6,600	\$29,700,000	208		
2243260	K	FLATBUSH AVENUE	FRANKLIN SHUTTLE	T	O		2	STATE	6/17/2020	5	4.216	FAIR	13,794	\$62,073,000	309		
2243510	K	FLATBUSH AVENUE	LIRR BAY RIDGE	N	O		2	STATE	6/8/2020	4	3.517	FAIR	5,880	\$26,460,000	318		
2231460	K	FLATBUSH AVENUE	BELT SYSTEM - SHORE PARKWAY		A		2	STATE	9/27/2019	6	6.206	VGOOD	14,058	\$63,261,000	356		
2244440	K	FLEET WALK PEDESTRIAN BRIDGE	NAVY STREET		PEDESTRIAN- O		1	CITY	7/24/2020	4	3.919	FAIR	620	\$2,790,000	302		
2248240	Q	FLUSHING AVENUE SERVICE ROAD	FLUSHING AVENUE		O		1	STATE	7/18/2019	6	4.898	FAIR	2,940	\$13,230,000	405		
2248090	Q	FLUSHING MEADOW PARK PEDESTRIAN	COLLEGE POINT BOULEVARD		PEDESTRIAN- O	P	3	CITY	2/14/2020	5	4.958	FAIR	8,400	\$37,800,000	407		
2248130	Q	FLUSHING MEADOW PARK PEDESTRIAN	WILLOW LAKE AND 76TH ROAD		PEDESTRIAN- WO	P	4	CITY	10/20/2020	5	5.000	GOOD	1,900	\$8,550,000	481		
2249780	R	FOOTBRIDGE	BROOKS LAKE DAM		PEDESTRIAN- WO	P	1	CITY	8/6/2019	4	4.417	FAIR	800	\$3,600,000	501		
2242120	B	FOOTBRIDGE NORTH OF ROUTE 1 (HESTER BRIDGE)	BRONX RIVER		PEDESTRIAN- WO	P	1	CITY	9/28/2020	4	3.630	FAIR	1,900	\$8,550,000	227		
2249790	R	FOOTBRIDGE SOUTH OF FOREST AVENUE	STREAM IN PARK		PEDESTRIAN- WO	P	3	CITY	9/17/2020	5	4.860	FAIR	700	\$3,150,000	501		
2241839	B	FORDHAM ROAD - EAST 189TH STREET	METRO NORTH RR HAR	M	O		1	STATE	10/29/2019	6	5.531	GOOD	39,972	\$179,874,000	206	207	
2249800	R	FOREST AVENUE	CLOVE LAKES PARK STREAM		WO	P	1	STATE	10/17/2019	5	5.154	GOOD	1,610	\$7,245,000	501		
2247660	Q	FOREST PARK DRIVE	ABANDONED LIRR		O	P	6	STATE	6/18/2020	4	3.968	FAIR	10,011	\$45,049,500	409		
2247590	Q	FOREST PARK DRIVE	LIRR MONTAUK DIV	L	O	P	5	STATE	8/20/2020	5	5.807	GOOD	5,974	\$26,883,000	409		

**BRIDGE INVENTORY SORTED BY FEATURE CARRIED**

BRIDGE ID #	BORO	FEATURE CARRIED	FEATURE CROSSED	RAIL ROAD	BRIDGE TYPE	OTHER OWNER	SPANS	RATING SOURCE	INSPECTION DATE	GENERAL RECOMMENDATION**	CURRENT RATING*	VERBAL RATING	DECK AREA (SQ FT)	REPLACEMENT COST	CD	CD2	CD3
2248340	Q	FOREST PARK DRIVE	MYRTLE AVENUE		O	P	3	STATE	7/24/2019	5	5.384	GOOD	5,100	\$22,950,000	409		
2243820	K	FORT HAMILTON PARKWAY	LIRR & SEA BEACH	NT	O		3	STATE	6/22/2020	5	6.164	VGOOD	12,640	\$56,880,000	310		
2246500	M	FORT TRYON PLACE	ENTRANCE FROM RIVERSIDE DRIVE		O	P	1	STATE	2/11/2020	4	3.435	FAIR	3,362	\$15,129,000	112		
7702990	M	FORT WASHINGTON PARK ROAD	AMTRAK - WEST SIDE CONNECTION	A	PEDESTRIAN-O	P	1	CITY	7/11/2020	3	3.064	FAIR	1,400	\$6,300,000	112		
2243150	K	FOSTER AVENUE	BMT SUBWAY, BRIGHTON	T	O		1	STATE	6/4/2020	4	4.218	FAIR	3,000	\$13,500,000	314		
2231930	Q	FRANCIS LEWIS BOULEVARD	BELT SYSTEM - CROSS ISLAND PARKWAY		A		3	STATE	1/28/2020	5	4.971	FAIR	9,100	\$40,950,000	407		
2267199	Q	FRANCIS LEWIS BOULEVARD	CUNNINGHAM PARK ROAD		O		1	STATE	4/25/2019	6	4.269	FAIR	7,181	\$32,314,500	408		
2231690	Q	FRANCIS LEWIS BOULEVARD	BELT SYSTEM - LAURELTON PARKWAY EASTBOUND		A		1	STATE	3/18/2020	5	4.692	FAIR	6,000	\$27,000,000	413		
2231700	Q	FRANCIS LEWIS BOULEVARD	BELT SYSTEM - LAURELTON PARKWAY WESTBOUND		A		1	STATE	3/17/2020	5	5.000	GOOD	5,986	\$26,937,000	413		
2249450	R	FREMONT AVENUE PEDESTRIAN BRIDGE	STATEN ISLAND RAILWAY SOUTH SHORE	S	PEDESTRIAN-O		3	CITY	8/21/2020	4	4.082	FAIR	800	\$3,600,000	502		
226771C	M	GARAGE RAMP TO 79TH STREET	79TH STREET BOAT BASIN GARAGE		AR	P	21	STATE	3/12/2020	5	5.132	GOOD	9,821	\$44,194,500	107		
2245480	M	TO GEORGE WASHINGTON BRIDGE OPPOSITE WEST 171ST STREET	RIVERSIDE DRIVE		O		1	STATE	1/31/2020	5	5.667	GOOD	10,880	\$48,960,000	112		
2241420	B	GERARD AVENUE	METRO NORTH RR HUD	M	O		1	STATE	6/5/2020	6	6.117	VGOOD	5,122	\$23,049,000	204		
2249360	R	GIFFORDS LANE	STATEN ISLAND RAILWAY SOUTH SHORE	S	O		1	STATE	10/9/2020	5	5.297	GOOD	3,042	\$13,689,000	503		
2243860	K	GLENMORE AVENUE	LIRR BAY RIDGE	N	O		2	STATE	9/16/2020	6	5.191	GOOD	5,668	\$25,506,000	316		
2247440	Q	GRAND AVENUE	CSX TRANSPORT	X	O		1	STATE	10/30/2019	6	5.950	GOOD	3,276	\$14,742,000	405		
2247180	Q	GRAND AVENUE	LIRR MAIN LINE	L	O		3	STATE	7/31/2020	5	4.000	FAIR	7,415	\$33,367,500	404		
2065940	Q	GRAND AVENUE	4951 (LONG ISLAND EXPRESSWAY)		A		2	STATE	9/21/2020	5	4.750	FAIR	12,852	\$57,834,000	405		
2242370	B	GRAND CONCOURSE	BEDFORD PARK BOULEVARD		O		1	STATE	3/23/2020	4	4.627	FAIR	9,435	\$42,457,500	207		
2242299	B	GRAND CONCOURSE	EAST 138TH STREET		O		1	STATE	6/3/2019	5	5.560	GOOD	9,500	\$42,750,000	201		
2242259	B	GRAND CONCOURSE	EAST 161ST STREET		O		1	STATE	5/5/2020	5	6.359	VGOOD	27,285	\$122,782,500	204		
2242280	B	GRAND CONCOURSE	EAST 167TH STREET		O		2	STATE	5/7/2020	5	5.386	GOOD	35,052	\$157,734,000	204		
2242300	B	GRAND CONCOURSE	EAST 170TH STREET		O		2	STATE	4/17/2020	5	4.587	FAIR	35,917	\$161,626,500	204		
2242319	B	GRAND CONCOURSE	EAST 174TH STREET	T	O		1	STATE	3/23/2020	4	4.923	FAIR	15,120	\$68,040,000	204		
2242329	B	GRAND CONCOURSE	EAST 175TH STREET	T	O		1	STATE	4/24/2020	5	4.154	FAIR	12,060	\$54,270,000	205		
2242380	B	GRAND CONCOURSE	EAST 204TH STREET		O		1	STATE	8/5/2019	6	5.969	GOOD	9,272	\$41,724,000	207		
2242360	B	GRAND CONCOURSE	EAST BURNSIDE AVENUE		O		2	STATE	5/20/2020	4	5.516	GOOD	8,736	\$39,312,000	205		
2242340	B	GRAND CONCOURSE	EAST KINGSBRIDGE ROAD		O		2	STATE	4/22/2020	5	4.476	FAIR	18,630	\$83,835,000	207		
2242330	B	GRAND CONCOURSE	EAST TREMONT AVENUE		O		1	STATE	8/12/2019	6	5.810	GOOD	11,700	\$52,650,000	205		
2241409	B	GRAND CONCOURSE	METRO NORTH RR HUD	MT	O		1	STATE	12/22/2020	4	4.891	FAIR	14,300	\$64,350,000	204		
2240390	KQ	GRAND STREET BRIDGE	NEWTOWN CREEK		WMO		2	STATE	9/18/2020	5	3.861	FAIR	7,176	\$32,292,000	301	405	
2249100	R	GRANITE AVENUE	B&O RR (ABANDONED)	O	O		4	STATE	3/24/2020	5	4.463	FAIR	7,300	\$32,850,000	501		
2249370	R	GREAVES AVENUE	STATEN ISLAND RAILWAY SOUTH SHORE	S	O		1	STATE	8/15/2019	7	5.200	GOOD	2,650	\$11,925,000	503		
2240370	KQ	GREENPOINT AVENUE BRIDGE	NEWTOWN CREEK	L	WMO		12	STATE	8/2/2019	5	5.194	GOOD	75,320	\$338,940,000	301	402	
2231370	K	GUIDER AVENUE RAMP TO BELT SYSTEM - SHORE PARKWAY	BELT SYSTEM - SHORE PARKWAY		A		4	STATE	8/28/2020	7	6.361	VGOOD	10,833	\$48,748,500	313		
2242430	B	GUN HILL ROAD	BRONX BOULEVARD		O		4	STATE	3/19/2020	5	5.304	GOOD	9,400	\$42,300,000	212		
2242440	B	GUN HILL ROAD	BRONX RIVER		WO		1	STATE	3/11/2020	5	6.731	VGOOD	8,700	\$39,150,000	212		
2241860	B	GUN HILL ROAD	METRO NORTH RR HAR	M	O		1	STATE	6/5/2020	6	6.567	VGOOD	9,109	\$40,990,500	212		
2241910	B	GUN HILL ROAD	NYCTA-DYRE AVE LN	T	O		1	STATE	12/7/2020	6	6.359	VGOOD	7,500	\$33,750,000	211	212	
2231610	Q	GUY R. BREWER BOULEVARD	BELT SYSTEM - SOUTHERN PARKWAY		A		4	STATE	8/10/2020	6	4.764	FAIR	12,342	\$55,539,000	413		
2249380	R	GUYON AVENUE	STATEN ISLAND RAILWAY SOUTH SHORE	S	O		3	STATE	9/11/2019	5	4.091	FAIR	6,964	\$31,338,000	503		
2240231	K	HAMILTON AVENUE BRIDGE	GOWANUS CANAL		WMO		3	STATE	9/6/2019	7	4.431	FAIR	7,300	\$32,850,000	307	306	

**BRIDGE INVENTORY SORTED BY FEATURE CARRIED**

BRIDGE ID #	BORO	FEATURE CARRIED	FEATURE CROSSED	RAIL ROAD	BRIDGE TYPE	OTHER OWNER	SPANS	RATING SOURCE	INSPECTION DATE	GENERAL RECOMMENDATION**	CURRENT RATING*	VERBAL RATING	DECK AREA (SQ FT)	REPLACEMENT COST	CD	CD2	CD3
2240232	K	HAMILTON AVENUE BRIDGE	GOWANUS CANAL		WMO		3	STATE	9/6/2019	5	5.222	GOOD	8,611	\$38,749,500	306		
2065930	Q	HAMILTON PLACE	4951 (LONG ISLAND EXPRESSWAY)		A		2	STATE	2/21/2020	6	5.361	GOOD	11,288	\$50,796,000	405		
2249520	R	HANNAH STREET	STATEN ISLAND RAILWAY SOUTH SHORE	S	O		10	STATE	10/8/2020	5	4.701	FAIR	13,360	\$60,120,000	501		
2249180	R	HARBOR ROAD	CONRAIL - EX B&O RR	C	O		4	STATE	8/17/2019	6	5.075	GOOD	5,864	\$26,388,000	501		
2267240	M	HARLEM RIVER DRIVE RAMP TO GEORGE WASHINGTON BRIDGE	HARLEM RIVER DRIVE SOUTHBOUND		A		55	STATE	9/12/2020	4	3.222	FAIR	113,936	\$512,712,000	112		
2233052	M	HARLEM RIVER DRIVE NORTHBOUND	NORTHBOUND HARLEM RIVER DRIVE RAMP TO EAST 127TH STREET		A		10	STATE	10/22/2020	7	6.333	VGOOD	38,406	\$172,827,000	111		
2233051	M	HARLEM RIVER DRIVE SOUTHBOUND	NORTHBOUND HARLEM RIVER DRIVE RAMP TO EAST 127TH STREET		A		9	STATE	5/13/2020	7	6.449	VGOOD	56,031	\$252,139,500	111		
2231780	Q	HEMPSTEAD AVENUE	BELT SYSTEM - CROSS ISLAND PARKWAY		A		2	STATE	1/22/2020	4	3.431	FAIR	14,200	\$63,900,000	413		
2266149	Q	HEMPSTEAD AVENUE	BELT SYSTEM - CROSS ISLAND PARKWAY RAMP NORTHBOUND		A		2	STATE	3/6/2020	4	4.982	FAIR	10,299	\$46,345,500	413		
2267250	M	HENRY HUDSON PARKWAY	AMTRAK - WEST 96TH STREET	A	A		55	STATE	9/25/2020	4	3.226	FAIR	90,550	\$407,475,000	107		
2229530	B	HENRY HUDSON PARKWAY	BROADWAY		A		1	STATE	6/26/2019	5	5.810	GOOD	7,500	\$33,750,000	208		
2229440	B	HENRY HUDSON PARKWAY	KAPPOCK STREET		A		1	STATE	6/12/2019	5	5.000	GOOD	5,014	\$22,563,000	208		
2266229	M	HENRY HUDSON PARKWAY	PEDESTRIAN PATH AT WEST 148TH STREET		A		1	STATE	1/20/2020	5	6.333	VGOOD	1,920	\$8,640,000	109		
2229309	M	HENRY HUDSON PARKWAY	RIVERSIDE PARK		A		1	STATE	1/7/2020	5	6.346	VGOOD	2,263	\$10,183,500	107		
2229349	M	HENRY HUDSON PARKWAY	WEST 158TH STREET	A	A		44	STATE	11/16/2020	5	3.300	FAIR	140,000	\$630,000,000	109	112	
2266230	M	HENRY HUDSON PARKWAY NORTHBOUND	PEDESTRIAN PATH INWOOD PARK		A		1	STATE	1/13/2020	5	6.333	VGOOD	917	\$4,126,500	112		
2229322	M	HENRY HUDSON PARKWAY NORTHBOUND	RAMP FROM WEST 96TH STREET		A		1	STATE	2/4/2020	5	6.423	VGOOD	1,975	\$8,887,500	107		
2229312	M	HENRY HUDSON PARKWAY NORTHBOUND	RAMP TO WEST 96TH STREET		A		1	STATE	1/22/2020	4	4.346	FAIR	1,995	\$8,977,500	107		
M00004	M	HENRY HUDSON PARKWAY ON/OFF RAMP - 79TH STREET NORTH SIDE	PEDESTRIAN PATH NORTH OF 79TH STREET		A		1	CITY	6/12/2020	4	4.467	FAIR	846	\$3,807,000	107		
M00003	M	HENRY HUDSON PARKWAY ON/OFF RAMP - 79TH STREET SOUTH SIDE	PEDESTRIAN PATH SOUTH OF 79TH STREET		A		1	CITY	6/12/2020	4	4.300	FAIR	846	\$3,807,000	107		
2266240	M	HENRY HUDSON PARKWAY SOUTHBOUND	PEDESTRIAN PATH INWOOD PARK		A		1	STATE	1/15/2020	6	5.667	GOOD	1,155	\$5,197,500	112		
2229321	M	HENRY HUDSON PARKWAY SOUTHBOUND	RAMP FROM WEST 96TH STREET		A		1	STATE	2/4/2020	5	6.385	VGOOD	2,081	\$9,364,500	107		
2229311	M	HENRY HUDSON PARKWAY SOUTHBOUND	RAMP TO WEST 96TH STREET		A		1	STATE	1/22/2020	4	5.615	GOOD	1,955	\$8,797,500	107		
2229289	M	HENRY HUDSON PARKWAY VIADUCT	AMTRAK - WEST 72ND STREET - WEST 79TH STREET	A	A		145	STATE	11/20/2020	5	3.700	FAIR	213,486	\$960,687,000	107		
2246580	BM	HIGH BRIDGE PEDESTRIAN OVERPASS	MAJOR DEEGAN EXPRESSWAY - HARLEM RIVER	M	PEDESTRIAN-WA	P	11	PARKS	8/12/2002	6	3.759	FAIR	34,100	\$153,450,000	112	204	
2230000	K	HIGHLAND BOULEVARD EASTBOUND	JACKIE ROBINSON PARKWAY		A		1	STATE	1/15/2020	5	5.167	GOOD	4,940	\$22,230,000	305		
2230220	K	HIGHLAND BOULEVARD NORTHBOUND	VERMONT STREET		A		1	STATE	4/26/2019	6	5.889	GOOD	3,995	\$17,977,500	305		
2230010	K	HIGHLAND BOULEVARD WESTBOUND	JACKIE ROBINSON PARKWAY		A		1	STATE	1/15/2020	5	5.233	GOOD	3,496	\$15,732,000	305		
2230020	K	HIGHLAND BOULEVARD WESTBOUND	JACKIE ROBINSON PARKWAY EASTBOUND ENTRANCE RAMP		A		2	STATE	1/16/2020	5	5.158	GOOD	4,700	\$21,150,000	305		
2248280	Q	HIGHLAND PARK PEDESTRIAN	PEDESTRIAN PATH		PEDESTRIAN-O	P	1	CITY	12/23/2019	6	5.714	GOOD	1,900	\$8,550,000	405		
2243780	K	HIGHLAWN AVENUE	BMT SEA BEACH	T	O		1	STATE	6/11/2019	6	6.840	VGOOD	6,960	\$31,320,000	311		
2244060	K	HILL DRIVE (CLEFT RIDGE SPAN)	PEDESTRIAN PATH SOUTH OF BOATHOUSE		O	P	1	CITY	5/11/2020	4	4.033	FAIR	750	\$3,375,000	355		
2244120	K	HILL DRIVE (TERRACE BRIDGE)	PROSPECT PARK LAKE		WO	P	3	STATE	9/23/2020	3	3.400	FAIR	7,735	\$34,807,500	355		
2231840	Q	HILLSIDE AVENUE	BELT SYSTEM - CROSS ISLAND PARKWAY		A		2	STATE	4/30/2020	4	4.412	FAIR	9,672	\$43,524,000	413		
2247320	Q	HONEYWELL STREET	SUNNYSIDE YARD	AL	O		22	STATE	11/20/2019	6	6.139	VGOOD	99,036	\$445,662,000	402	401	
2232040	M	HOUSTON STREET	FDR DRIVE		A		2	STATE	6/13/2019	7	6.207	VGOOD	11,175	\$50,287,500	103		
223204B	M	HOUSTON STREET RAMP TO FDR DRIVE NORTHBOUND	RELIEF		AR		4	STATE	1/14/2020	5	5.976	GOOD	7,150	\$32,175,000	103		
2249300	R	HUGUENOT AVENUE	STATEN ISLAND RAILWAY SOUTH SHORE	S	O		2	STATE	9/12/2019	5	4.803	FAIR	6,514	\$29,313,000	503		
2240450	Q	HUNTERS POINT AVENUE	DUTCH KILLS		WMO		4	STATE	6/30/2020	5	5.556	GOOD	12,168	\$54,756,000	402		
2241190	B	HUNTS POINT AVENUE	AMTRAK - CSX	AX	O		1	STATE	12/6/2018	5	5.767	GOOD	9,847	\$44,311,500	202		
2241959	B	HUTCHINSON RIVER PARKWAY	AMTRAK - CSX	AX	O		1	STATE	10/19/2020	6	5.683	GOOD	15,444	\$69,498,000	210	211	
2075859	B	HUTCHINSON RIVER PARKWAY	HUTCHINSON RIVER		WMA		7	STATE	11/13/2020	5	4.254	FAIR	60,206	\$270,927,000	210	228	



**BRIDGE INVENTORY SORTED BY FEATURE CARRIED**

BRIDGE ID #	BORO	FEATURE CARRIED	FEATURE CROSSED	RAIL ROAD	BRIDGE TYPE	OTHER OWNER	SPANS	RATING SOURCE	INSPECTION DATE	GENERAL RECOMMENDATION**	CURRENT RATING*	VERBAL RATING	DECK AREA (SQ FT)	REPLACEMENT COST	CD	CD2	CD3
2249810	R	HYLAN BOULEVARD	LEMON CREEK		WO		1	STATE	2/3/2020	6	6.344	VGOOD	11,400	\$51,300,000	503		
2245300	M	INWOOD HILL PARK FOOTBRIDGE	AMTRAK 30TH STREET BRANCH	A	PEDESTRIAN-O	P	6	CITY	6/27/2020	4	4.071	FAIR	700	\$3,150,000	112		
2246700	M	ISHAM PARK PEDESTRIAN BRIDGE	HARLEM RIVER INLET		PEDESTRIAN-WO	P	1	CITY	4/8/2020	4	4.306	FAIR	300	\$1,350,000	112		
2246690	M	ISHAM PARK VEHICULAR	HARLEM RIVER INLET		WO	P	1	STATE	2/7/2020	6	6.444	VGOOD	911	\$4,099,500	112		
2230099	Q	JACKIE ROBINSON PARKWAY	CYPRESS HILLS CEMETERY		A		1	STATE	1/15/2020	5	4.296	FAIR	3,842	\$17,289,000	405		
2230179	Q	JACKIE ROBINSON PARKWAY	METROPOLITAN AVENUE		A		2	STATE	3/26/2020	5	6.083	VGOOD	8,673	\$39,028,500	482		
2248299	Q	JACKIE ROBINSON PARKWAY-UNION TURNPIKE	AUSTIN STREET		O		1	STATE	5/13/2020	5	5.533	GOOD	6,930	\$31,185,000	409	406	
2247260	Q	JACKSON AVENUE	LIRR MONTAUK DIV	L	O		1	STATE	8/3/2020	6	5.031	GOOD	4,517	\$20,326,500	402		
2231819	Q	JAMAICA AVENUE	BELT SYSTEM - CROSS ISLAND PARKWAY		A		2	STATE	5/12/2020	5	4.465	FAIR	12,240	\$55,080,000	413		
2230287	B	JEROME AVENUE	MOSHOLU PARKWAY	T	A		3	STATE	6/21/2019	5	5.706	GOOD	11,800	\$53,100,000	207		
2249070	R	JOHN STREET PEDESTRIAN BRIDGE	B&O RR (ABANDONED)	O	PEDESTRIAN-O		2	CITY	10/28/2019	5	5.336	GOOD	1,050	\$4,725,000	501		
2247480	Q	JUNIPER BOULEVARD SOUTH	CSX TRANSPORT	X	O		1	STATE	11/1/2019	5	5.667	GOOD	9,000	\$40,500,000	405		
2230380	K	KANE STREET	278I (BROOKLYN-QUEENS EXPRESSWAY)		A		2	STATE	3/23/2020	5	5.060	GOOD	5,000	\$22,500,000	306		
2271600	B	KIERAN TRAIL CART PATH	VAN CORTLANDT		PEDESTRIAN-WO	P	4	CITY	10/22/2020	4	4.652	FAIR	676	\$3,042,000	226		
2243770	K	KINGS HIGHWAY	BMT SEA BEACH	T	O		1	STATE	6/14/2019	6	6.895	VGOOD	5,032	\$22,644,000	311		
2231449	K	KNAPP STREET	BELT SYSTEM - SHORE PARKWAY		A		1	STATE	3/13/2020	5	4.312	FAIR	9,398	\$42,291,000	315		
2241169	B	LAFAYETTE AVENUE	AMTRAK - CSX	AX	O		1	STATE	12/8/2018	5	5.814	GOOD	12,100	\$54,450,000	202		
2249110	R	LAKE AVENUE	B&O RR (ABANDONED)	O	O		3	STATE	3/11/2020	5	4.935	FAIR	5,900	\$26,550,000	501		
2247240	Q	LEFFERTS BOULEVARD	LIRR MAIN LINE	L	O		3	STATE	10/17/2019	6	5.791	GOOD	5,460	\$24,570,000	409		
2241139	B	LEGGETT AVENUE	AMTRAK - CSX	AX	O		3	STATE	12/14/2018	5	5.563	GOOD	41,741	\$187,834,500	202		
2271650	R	LEMON CREEK PARK PEDESTRIAN	PRINCESS BAY INLET		PEDESTRIAN-WO	P	3	CITY	10/20/2020	5	4.889	FAIR	179	\$805,500	503		
2243850	K	LIBERTY AVENUE	LIRR BAY RIDGE	N	O		3	STATE	9/16/2020	6	4.779	FAIR	6,716	\$30,222,000	316		
2249460	R	LINCOLN AVENUE	STATEN ISLAND RAILWAY SOUTH SHORE	S	O		1	STATE	9/3/2019	5	5.069	GOOD	4,500	\$20,250,000	502		
2243190	K	LINCOLN PLACE	FRANKLIN SHUTTLE	T	O		1	STATE	6/10/2020	6	5.516	GOOD	2,460	\$11,070,000	308		
2243010	K	LINCOLN ROAD	BMT SUBWAY, BRIGHTON	T	O		1	STATE	5/19/2020	7	4.789	FAIR	6,243	\$28,093,500	355		
2231750	Q	LINDEN BOULEVARD	BELT SYSTEM - CROSS ISLAND PARKWAY		A		2	STATE	2/24/2020	4	4.605	FAIR	6,716	\$30,222,000	413		
2271630	M	LITTLE HELL GATE BRIDGE	HARLEM RIVER INLET		PEDESTRIAN-WO	P	1	CITY	10/8/2020	5	4.786	FAIR	1,798	\$8,091,000	111		
2243910	K	LIVONIA AVENUE PEDESTRIAN BRIDGE	LIRR BAY RIDGE	N	PEDESTRIAN-O		6	CITY	10/1/2020	5	4.542	FAIR	2,500	\$11,250,000	316		
2066002	Q	LONG ISLAND EXPRESSWAY (2066000)	WOODHAVEN BOULEVARD		A		2	STATE	5/22/2019	6	4.420	FAIR	25,200	\$113,400,000	406	404	
2241159	B	LONGWOOD AVENUE	AMTRAK - CSX	AX	O		2	STATE	12/12/2018	5	5.931	GOOD	10,625	\$47,812,500	202		
1240090	BM	MACOMBS DAM BRIDGE	HARLEM RIVER	M	WMO		52	STATE	11/20/2019	5	5.070	GOOD	217,788	\$980,046,000	110	204	
2240079	BM	MADISON AVENUE BRIDGE	HARLEM RIVER		WMO		21	STATE	9/14/2020	5	4.352	FAIR	96,256	\$433,152,000	111	201	
2242210	B	MAGNOLIA WAY	BRONX RIVER		WO	P	3	STATE	4/16/2020	4	4.647	FAIR	6,200	\$27,900,000	227		
2249210	R	MAIN STREET PEDESTRIAN BRIDGE	STATEN ISLAND RAILWAY SOUTH SHORE	S	PEDESTRIAN-O		9	CITY	8/17/2020	4	4.579	FAIR	400	\$1,800,000	503		
2240027	KM	MANHATTAN BRIDGE (LOWER LEVEL)	EAST RIVER	T	WEO		23	STATE	11/10/2020	5	4.222	FAIR	616,390	\$2,773,755,000	103	302	
2240028	KM	MANHATTAN BRIDGE (UPPER LEVEL)	NYCTA TRACKS-BMT	T	WEO		43	STATE	11/16/2020	5	4.125	FAIR	587,424	\$2,643,408,000	103	302	
2229480	B	MANHATTAN COLLEGE PARKWAY	HENRY HUDSON PARKWAY		A		3	STATE	5/23/2019	5	6.447	VGOOD	6,200	\$27,900,000	208		
2245040	M	MARGARET CORBIN DRIVE	PEDESTRIAN PATH NEAR CAFÉ		O	P	1	CITY	3/6/2020	5	5.000	GOOD	598	\$2,691,000	112		
2245050	M	MARGARET CORBIN DRIVE	PEDESTRIAN PATH NEAR NORTH ENTRANCE		O	P	1	CITY	3/6/2020	4	4.639	FAIR	889	\$4,000,500	112		
2230190	Q	MARKWOOD ROAD	JACKIE ROBINSON PARKWAY		A		1	STATE	2/19/2020	5	4.733	FAIR	4,400	\$19,800,000	482	406	
2249760	R	MARTLINGS AVENUE	RICHMOND LAKE DAM		WO		2	STATE	5/17/2019	5	4.538	FAIR	7,000	\$31,500,000	501		
2269030	B	MATTHEWSON ROAD	MACCRACKEN AVENUE		O		15	STATE	7/31/2020	5	4.404	FAIR	14,880	\$66,960,000	205		

**BRIDGE INVENTORY SORTED BY FEATURE CARRIED**

BRIDGE ID #	BORO	FEATURE CARRIED	FEATURE CROSSED	RAIL ROAD	BRIDGE TYPE	OTHER OWNER	SPANS	RATING SOURCE	INSPECTION DATE	GENERAL RECOMMENDATION**	CURRENT RATING*	VERBAL RATING	DECK AREA (SQ FT)	REPLACEMENT COST	CD	CD2	CD3
2243410	K	MCDONALD AVENUE	LIRR BAY RIDGE	N	O		1	STATE	8/26/2020	5	4.891	FAIR	2,974	\$13,383,000	312		
2248260	Q	MEADOW LAKE BRIDGE	MEADOW LAKE		WO	P	5	STATE	7/16/2020	5	4.226	FAIR	4,160	\$18,720,000	481		
2241110	B	MELROSE AVENUE	CSX PORT MORRIS - (ABANDONED)		O		8	STATE	7/22/2019	6	6.014	VGOOD	37,854	\$170,343,000	203		
2248140	Q	MERIDIAN ROAD	STREAM NORTH OF LONG ISLAND EXPRESSWAY		WO	P	5	STATE	7/14/2020	5	4.371	FAIR	4,160	\$18,720,000	481		
2270690	Q	MERIDIAN ROAD	TIDE GATE DAM		WO	P	9	STATE	9/5/2019	5	3.071	FAIR	6,480	\$29,160,000	481		
2231710	Q	MERRICK BOULEVARD	BELT SYSTEM - LAURELTON PARKWAY NORTHBOUND		A		1	STATE	1/13/2020	4	5.077	GOOD	5,976	\$26,892,000	413		
2231720	Q	MERRICK BOULEVARD	BELT SYSTEM - LAURELTON PARKWAY SOUTHBOUND		A		1	STATE	1/14/2020	4	5.077	GOOD	5,976	\$26,892,000	413		
2247500	Q	METROPOLITAN AVENUE	CSX TRANSPORT	X	O		1	STATE	11/1/2019	5	6.100	VGOOD	18,648	\$83,916,000	405		
2240290	K	METROPOLITAN AVENUE	ENGLISH KILLS		WMO		5	STATE	7/19/2019	6	5.542	GOOD	10,550	\$47,475,000	301		
1247560	Q	METROPOLITAN AVENUE	LIRR - NY & ATL	LN	O		2	STATE	9/17/2019	5	5.635	GOOD	20,640	\$92,880,000	405		
2249470	R	MIDLAND AVENUE	STATEN ISLAND RAILWAY SOUTH SHORE	S	O		1	STATE	9/4/2019	5	5.172	GOOD	2,952	\$13,284,000	502		
2257569	M	MILLER HIGHWAY - ROUTE 9A	RIVERSIDE PARK SOUTH		A		64	STATE	8/21/2020	5	4.062	FAIR	272,475	\$1,226,137,500	104	107	
2249530	R	MINTHORNE STREET PEDESTRIAN BRIDGE	STATEN ISLAND RAILWAY SOUTH SHORE	S	PEDESTRIAN-O		26	CITY	8/24/2020	4	4.311	FAIR	6,000	\$27,000,000	501		
2243240	K	MONTGOMERY STREET	FRANKLIN SHUTTLE	T	O		1	STATE	6/24/2019	6	6.481	VGOOD	2,240	\$10,080,000	309		
2249090	R	MORNINGSTAR ROAD	B&O RR (ABANDONED)	O	O		4	STATE	3/31/2020	5	3.806	FAIR	7,900	\$35,550,000	501		
2230250	B	MOSHOLU PARKWAY	BRONX RIVER		WA		5	STATE	3/5/2020	5	5.176	GOOD	16,300	\$73,350,000	227		
2230300	B	MOSHOLU PARKWAY	CONRAIL (ABANDONED)		A		1	STATE	5/22/2020	5	6.297	VGOOD	4,600	\$20,700,000	226		
2230290	B	MOSHOLU PARKWAY	EQUESTRIAN PATH		A		1	STATE	3/9/2020	6	5.720	GOOD	4,300	\$19,350,000	226		
2230260	B	MOSHOLU PARKWAY	METRO NORTH	M	A		1	STATE	5/14/2020	6	6.250	VGOOD	8,880	\$39,960,000	227	207	
2230310	B	MOSHOLU PARKWAY	SOUTHBOUND RAMP TO HENRY HUDSON PARKWAY		A		2	STATE	8/8/2019	5	4.161	FAIR	7,400	\$33,300,000	226		
2230270	B	MOSHOLU PARKWAY	WEBSTER AVENUE		A		1	STATE	5/15/2019	5	5.542	GOOD	8,480	\$38,160,000	207		
2248100	Q	MOTOR PARKWAY (PEDESTRIAN)	73RD AVENUE		PEDESTRIAN-O	P	3	CITY	10/24/2019	4	4.541	FAIR	2,600	\$11,700,000	408		
2248110	Q	MOTOR PARKWAY (PEDESTRIAN)	ALLEY PARK PEDESTRIAN WALK		PEDESTRIAN-O	P	1	CITY	6/11/2020	4	4.208	FAIR	1,000	\$4,500,000	413		
2271310	Q	MOTOR PARKWAY (PEDESTRIAN)	ALLEY POND PARK PEDESTRIAN		PEDESTRIAN-O	P	1	CITY	9/28/2020	4	4.389	FAIR	798	\$3,591,000	411		
2248060	Q	MOTOR PARKWAY (PEDESTRIAN)	BELL BOULEVARD		PEDESTRIAN-O	P	2	CITY	6/2/2020	4	4.528	FAIR	2,650	\$11,925,000	411		
2248059	Q	MOTOR PARKWAY (PEDESTRIAN)	FRANCIS LEWIS BOULEVARD		PEDESTRIAN-O	P	2	CITY	6/11/2020	4	4.472	FAIR	2,800	\$12,600,000	408		
2248080	Q	MOTOR PARKWAY (PEDESTRIAN)	HOLLIS COURT BOULEVARD		PEDESTRIAN-O	P	3	CITY	10/23/2019	4	4.452	FAIR	2,700	\$12,150,000	408		
2248070	Q	MOTOR PARKWAY (PEDESTRIAN)	SPRINGFIELD BOULEVARD		PEDESTRIAN-O	P	3	CITY	7/22/2020	4	3.967	FAIR	2,900	\$13,050,000	411		
2247110	Q	MURRAY STREET	LIRR PORT WASHINGTON BRANCH	L	O		1	STATE	9/4/2019	5	6.148	VGOOD	4,030	\$18,135,000	407		
2247620	Q	MYRTLE AVENUE	ABANDONED LIRR		O		3	STATE	1/13/2020	6	4.681	FAIR	6,725	\$30,262,500	482	406	
2230120	Q	MYRTLE AVENUE	JACKIE ROBINSON PARKWAY		A		1	STATE	4/22/2020	5	6.349	VGOOD	6,363	\$28,633,500	405	482	
2249350	R	NELSON AVENUE PEDESTRIAN BRIDGE	STATEN ISLAND RAILWAY SOUTH SHORE	S	PEDESTRIAN-O		3	CITY	8/19/2020	4	4.071	FAIR	300	\$1,350,000	503		
1067150	B	NEREID AVENUE (EAST 240TH STREET)	BRONX RIVER PARKWAY	M	O		10	STATE	2/21/2020	5	4.103	FAIR	58,125	\$261,562,500	212		
2249430	R	NEW DORP LANE	STATEN ISLAND RAILWAY SOUTH SHORE	S	O		2	STATE	8/28/2019	5	4.227	FAIR	7,600	\$34,200,000	502		
2243860	K	NEW UTRECHT AVENUE	LIRR BAY RIDGE	N	O		1	STATE	9/3/2020	6	5.917	GOOD	2,416	\$10,872,000	311		
224004G	Q	TO NEW YORK FROM 11TH STREET	TERRAIN (CHAMBER)		OE		36	STATE	8/28/2020	6	3.429	FAIR	8,410	\$37,845,000	401	402	
224004F	Q	TO NEW YORK FROM 21ST STREET	21ST STREET		OE		63	STATE	12/11/2020	6	4.281	FAIR	63,365	\$285,142,500	402	401	
224004E	Q	TO NEW YORK FROM THOMSON AVENUE	JACKSON AVENUE	L	OE		94	STATE	12/15/2020	5	3.852	FAIR	105,067	\$472,801,500	402		
2243140	K	NEWKIRK AVENUE	BMT SUBWAY, BRIGHTON	T	O		3	STATE	6/2/2020	5	5.508	GOOD	4,343	\$19,543,500	314		
2240240	K	NINTH STREET BRIDGE	GOWANUS CANAL		WMO		3	STATE	5/22/2019	6	5.481	GOOD	5,824	\$26,208,000	306		
2231670	Q	NORTH CONDUIT AVENUE WESTBOUND	BELT SYSTEM - LAURELTON PARKWAY EASTBOUND		A		1	STATE	1/30/2020	5	4.733	FAIR	4,000	\$18,000,000	413		
2231680	Q	NORTH CONDUIT AVENUE WESTBOUND	BELT SYSTEM - LAURELTON PARKWAY WESTBOUND		A		2	STATE	1/31/2020	5	4.826	FAIR	6,517	\$29,326,500	413		

**BRIDGE INVENTORY SORTED BY FEATURE CARRIED**

BRIDGE ID #	BORO	FEATURE CARRIED	FEATURE CROSSED	RAIL ROAD	BRIDGE TYPE	OTHER OWNER	SPANS	RATING SOURCE	INSPECTION DATE	GENERAL RECOMMENDATION**	CURRENT RATING*	VERBAL RATING	DECK AREA (SQ FT)	REPLACEMENT COST	CD	CD2	CD3
2269760	R	NORTH RAMP	STATEN ISLAND RAILWAY	S	O	F	2	STATE	10/14/2020	7	5.866	GOOD	6,000	\$27,000,000	501		
2240440	Q	NORTHERN BOULEVARD	ALLEY CREEK		WO		2	STATE	7/13/2020	4	3.836	FAIR	8,249	\$37,120,500	411		
2231870	Q	NORTHERN BOULEVARD	BELT SYSTEM - CROSS ISLAND PARKWAY		A		2	STATE	6/25/2020	6	5.736	GOOD	9,394	\$42,273,000	411		
2055802	Q	NORTHERN BOULEVARD EASTBOUND	FLUSHING RIVER		WO		40	STATE	9/11/2020	4	4.562	FAIR	78,894	\$355,023,000	407		
2055801	Q	NORTHERN BOULEVARD WESTBOUND	FLUSHING RIVER		WO		40	STATE	9/11/2020	4	4.152	FAIR	71,900	\$323,550,000	407		
205580A	Q	NORTHERN BOULEVARD WESTBOUND TO 6781 SOUTHBOUND	VACANT LAND		AR		16	STATE	5/26/2020	6	4.238	FAIR	8,600	\$38,700,000	407		
2243500	K	NOSTRAND AVENUE	LIRR BAY RIDGE	N	O		2	STATE	8/13/2020	5	4.358	FAIR	4,320	\$19,440,000	314		
2240138	BM	NYCTA IRT	HARLEM RIVER/BROADWAY	TM	WMO		3	STATE	12/18/2019	5	5.260	GOOD	19,560	\$88,020,000	112	207	208
2243480	K	OCEAN AVENUE	LIRR BAY RIDGE	N	O		2	STATE	8/6/2020	5	5.413	GOOD	5,192	\$23,364,000	314		
2240320	K	OCEAN AVENUE PEDESTRIAN BRIDGE	SHEEPSHEAD BAY		PEDESTRIAN- WO		30	CITY	8/11/2020	5	4.935	FAIR	4,450	\$20,025,000	315		
2243439	K	OCEAN PARKWAY	LIRR BAY RIDGE	N	O		1	STATE	8/26/2020	5	5.200	GOOD	7,000	\$31,500,000	312		
2249269	R	PAGE AVENUE	STATEN ISLAND RAILWAY - TIDAL STREAM	S	WO		4	STATE	9/10/2019	6	5.222	GOOD	30,710	\$138,195,000	503		
2245470	M	PARK AVENUE NORTHBOUND	EAST 45TH STREET		O		1	STATE	2/27/2020	6	5.244	GOOD	2,457	\$11,056,500	105		
2245460	M	PARK AVENUE SOUTHBOUND	EAST 45TH STREET		O		1	STATE	2/27/2020	6	5.512	GOOD	2,375	\$10,687,500	105		
2246550	M	PARK AVENUE VIADUCT	EAST 42ND STREET		O		7	STATE	11/13/2020	5	4.567	FAIR	28,294	\$127,323,000	105		
2247600	Q	PARK LANE SOUTH	LIRR MONTAUK DIV	L	O		1	STATE	8/21/2020	6	6.500	VGOOD	3,024	\$13,608,000	409	482	
2242099	B	PARK ROAD (204TH STREET)	BRONX RIVER		WO		1	STATE	4/10/2020	5	4.077	FAIR	4,700	\$21,150,000	212		
224001G	M	TO PARK ROW	ROSE STREET		OE		8	STATE	8/14/2020	5	4.957	FAIR	16,578	\$74,601,000	101		
224001A	M	PARK ROW TO BROOKLYN	WILLIAM STREET NORTHBOUND		OE		4	STATE	7/6/2020	5	5.338	GOOD	9,317	\$41,926,500	101		
2269780	R	PARKING ENTRANCE RAMP	STATEN ISLAND RAILWAY	S	O	F	3	STATE	10/26/2020	6	6.194	VGOOD	8,589	\$38,650,500	501		
2269730	R	PARKING EXIT RAMP	STATEN ISLAND RAILWAY	S	O	F	10	STATE	11/21/2020	6	5.806	GOOD	20,769	\$93,460,500	501		
2243020	K	PARKSIDE AVENUE - OCEAN AVENUE	BMT SUBWAY, BRIGHTON	T	O		6	STATE	5/22/2020	4	3.706	FAIR	48,700	\$219,150,000	314		
2247060	Q	PARSONS BOULEVARD	LIRR PORT WASHINGTON BRANCH	L	O		1	STATE	7/28/2020	6	4.037	FAIR	4,032	\$18,144,000	407		
224001E	M	TO PEARL STREET	LAND ADJACENT TO BRIDGE		OE		3	STATE	4/1/2020	5	5.217	GOOD	5,508	\$24,786,000	101		
224001C	M	PEARL STREET TO BROOKLYN	LAND ADJACENT TO BRIDGE		OE		9	STATE	6/2/2020	4	3.644	FAIR	6,386	\$28,737,000	101		
224001F	M	PEARL STREET TO FDR DRIVE	LAND ADJACENT TO BRIDGE		OE		3	STATE	5/5/2020	6	5.928	GOOD	5,211	\$23,449,500	103		
222928C	M	PEDESTRIAN BRIDGE AT WEST 73RD STREET	HENRY HUDSON PARKWAY - AMTRAK	A	PEDESTRIAN- A	P	5	CITY	6/19/2020	4	3.929	FAIR	3,700	\$16,650,000	107		
2247630	Q	PEDESTRIAN BRIDGE NEAR UNION TURNPIKE	ABANDONED LIRR		PEDESTRIAN- O		8	CITY	7/22/2019	4	4.290	FAIR	1,500	\$6,750,000	406		
2246090	M	PEDESTRIAN BRIDGE OPPOSITE 65TH STREET	TRANSVERSE ROAD #1		PEDESTRIAN- O	P	1	CITY	11/23/2020	4	4.583	FAIR	2,300	\$10,350,000	164		
2244130	K	PEDESTRIAN BRIDGE NEAR BOATHOUSE (LULLWATER BRIDGE)	PROSPECT PARK LAKE		PEDESTRIAN- WO	P	1	CITY	9/2/2020	5	4.885	FAIR	1,000	\$4,500,000	355		
2246400	M	PEDESTRIAN PATH OPPOSITE EAST 79TH STREET	TRANSVERSE ROAD #2		PEDESTRIAN- O	P	1	CITY	5/12/2020	4	4.280	FAIR	3,700	\$16,650,000	164		
2241380	B	PELHAM BAY PARK EQUESTRIAN	AMTRAK - CSX	AX	PEDESTRIAN- O	P	1	CITY	6/11/2020	3	3.356	FAIR	7,300	\$32,850,000	228		
2231519	K	PENNSYLVANIA AVENUE	BELT SYSTEM - SHORE PARKWAY		A		2	STATE	5/3/2019	6	5.264	GOOD	6,636	\$29,862,000	356		
2243870	K	PITKIN AVENUE	LIRR BAY RIDGE	N	O		2	STATE	9/21/2020	7	4.779	FAIR	5,464	\$24,588,000	316		
2243210	K	PRESIDENT STREET	FRANKLIN SHUTTLE	T	O		2	STATE	7/13/2020	5	4.561	FAIR	2,500	\$11,250,000	309		
2232167	M	PROMENADE OVER FDR DRIVE	FDR DRIVE - EAST 81ST STREET - EAST 90TH STREET		PEDESTRIAN- A	P	53	STATE	6/21/2019	4	4.000	FAIR	93,000	\$418,500,000	108		
2268760	M	PS-5 PEDESTRIAN BRIDGE	TENTH AVENUE		PEDESTRIAN- O		5	CITY	8/15/2020	4	4.362	FAIR	1,285	\$5,782,500	112		
2240639	KQ	PULASKI BRIDGE	NEWTOWN CREEK		WMO		44	STATE	5/29/2020	5	4.099	FAIR	206,623	\$929,803,500	301	402	
224004D	M	TO QUEENS FROM EAST 58TH STREET	EAST 59TH STREET		OE		12	STATE	4/3/2020	5	5.373	GOOD	15,042	\$67,689,000	106	108	
224004B	M	TO QUEENS FROM EAST 59TH STREET	FIRST AVENUE		OE		13	STATE	3/12/2020	6	6.333	VGOOD	14,820	\$66,690,000	108		
2230869	Q	QUEENS BOULEVARD	ACCESS ROAD BROOKLYN-QUEENS EXPRESSWAY SOUTHBOUND		A		1	STATE	7/22/2020	6	5.595	GOOD	11,385	\$51,232,500	402		
2247310	Q	QUEENS BOULEVARD	AMTRAK & LIRR YARD	AL	O		19	STATE	11/24/2020	6	5.424	GOOD	103,011	\$463,549,500	402	401	

**BRIDGE INVENTORY SORTED BY FEATURE CARRIED**

BRIDGE ID #	BORO	FEATURE CARRIED	FEATURE CROSSED	RAIL ROAD	BRIDGE TYPE	OTHER OWNER	SPANS	RATING SOURCE	INSPECTION DATE	GENERAL RECOMMENDATION**	CURRENT RATING*	VERBAL RATING	DECK AREA (SQ FT)	REPLACEMENT COST	CD	CD2	CD3
2230530	Q	QUEENS BOULEVARD	2781 (BROOKLYN-QUEENS EXPRESSWAY)		A		2	STATE	8/14/2020	6	5.722	GOOD	262,208	\$1,179,936,000	402		
2230209	Q	QUEENS BOULEVARD	JACKIE ROBINSON PARKWAY	T	A		5	STATE	6/3/2020	5	5.810	GOOD	37,753	\$169,888,500	409		
224005A	M	RAMP FROM FDR DRIVE	HARLEM RIVER DRIVE NORTHBOUND		OR		11	STATE	9/25/2020	7	6.449	VGOOD	25,224	\$113,508,000	111		
2248040	Q	RAMP TO LINDEN BOULEVARD	SOUTH CONDUIT AVENUE		O		1	STATE	5/20/2020	5	4.950	FAIR	3,355	\$15,097,500	410		
224007A	M	RAMP TO MADISON AVENUE	EAST 138TH STREET		OR		7	STATE	1/31/2020	5	5.845	GOOD	18,587	\$83,551,500	111		
223201D	M	RAMP TO NORTHBOUND FDR DRIVE	FDR DRIVE & SOUTH STREET		AR		22	STATE	3/6/2020	5	4.593	FAIR	15,825	\$71,212,500	101	103	
222834A	M	RAMP TO NORTHBOUND HENRY HUDSON PARKWAY	AMTRAK WEST SIDE	A	AR		26	STATE	11/17/2020	4	3.935	FAIR	10,800	\$48,600,000	112		
2270970	BM	RANDALL'S ISLAND CONNECTOR PEDESTRIAN	BRONX KILL		PEDESTRIAN- WO	P	6	CITY	9/14/2020	6	5.549	GOOD	3,040	\$13,680,000	111	201	
2240350	R	RICHMOND AVENUE	RICHMOND CREEK		WO		3	STATE	5/17/2019	5	5.292	GOOD	32,589	\$146,650,500	502		
2249270	R	RICHMOND VALLEY ROAD	STATEN ISLAND RAILWAY SOUTH SHORE	S	O		4	STATE	8/26/2019	5	4.254	FAIR	9,440	\$42,480,000	503		
2249280	R	RICHMOND VALLEY STATION PEDESTRIAN BRIDGE	STATEN ISLAND RAILWAY SOUTH SHORE	S	PEDESTRIAN- O		7	CITY	8/18/2020	4	4.491	FAIR	595	\$2,677,500	503		
2244150	K	RIDGE BOULEVARD	SHORE ROAD DRIVE		O		1	STATE	4/30/2019	6	6.154	VGOOD	4,430	\$19,935,000	310		
2240660	Q	RIKERS ISLAND BRIDGE	RIKERS ISLAND CHANNEL		WO		56	STATE	10/27/2020	5	3.620	FAIR	179,565	\$808,042,500	401	480	
2241430	B	RIVER AVENUE	METRO NORTH RR HUD	M	O		1	STATE	10/29/2019	6	4.922	FAIR	5,184	\$23,328,000	204		
2229510	B	RIVERDALE AVENUE	HENRY HUDSON PARKWAY		A		2	STATE	6/7/2019	5	5.690	GOOD	5,200	\$23,400,000	208		
2246970	M	RIVERSIDE DRIVE	WEST 96TH STREET		O		3	STATE	4/16/2019	5	6.333	VGOOD	11,232	\$50,544,000	107		
2246660	M	RIVERSIDE DRIVE	WEST 125TH STREET - WEST 134TH STREET		O		27	STATE	7/16/2019	5	4.236	FAIR	147,795	\$665,077,500	109		
2246980	M	RIVERSIDE DRIVE	WEST 138TH STREET		O		1	STATE	1/10/2020	5	5.846	GOOD	6,783	\$30,523,500	109		
2267130	M	RIVERSIDE DRIVE	WEST 145TH STREET		O		1	STATE	4/23/2019	5	6.565	VGOOD	5,943	\$26,743,500	109		
2269240	M	RIVERSIDE DRIVE	WEST 155TH STREET		O		1	STATE	4/22/2019	4	5.261	GOOD	3,526	\$15,867,000	109	112	
2246720	M	RIVERSIDE DRIVE	WEST 158TH STREET - AMTRAK	A	O		77	STATE	11/22/2019	4	3.792	FAIR	186,822	\$840,699,000	109	112	
2269200	M	RIVERSIDE DRIVE SOUTH	AMTRAK	A	O		11	STATE	11/1/2019	6	6.134	VGOOD	69,040	\$310,680,000	107		
2271190	M	RIVERSIDE PARK - NORTH	AMTRAK EMPIRE LINE	A	PEDESTRIAN- O	P	403	PARKS	2/23/2018	3	2.854	POOR	526,320	\$2,368,440,000	107		
2271180	M	RIVERSIDE PARK - SOUTH	AMTRAK EMPIRE LINE	A	PEDESTRIAN- O	P	171	PARKS	1/25/2018	5	4.064	FAIR	252,728	\$1,137,276,000	107		
2300130	Q	ROCKAWAY BOULEVARD	HOOK CREEK		WO		3	STATE	7/19/2019	6	5.226	GOOD	18,302	\$82,359,000	413		
2248369	Q	ROCKAWAY BOULEVARD	THURSTON BASIN		WO		2	STATE	7/10/2019	5	3.778	FAIR	6,000	\$27,000,000	483	413	
2230587	Q	ROOSEVELT AVENUE	2781 (BROOKLYN-QUEENS EXPRESSWAY)		A		2	STATE	9/17/2019	5	5.778	GOOD	11,022	\$49,599,000	402		
2247380	Q	ROOSEVELT AVENUE	CSX - HELLGATE - NYCTA	X	O		2	STATE	10/19/2019	6	5.500	GOOD	7,407	\$33,331,500	402	403	404
2267160	Q	ROOSEVELT AVENUE	SHEA ROAD		O		4	STATE	7/18/2019	5	4.873	FAIR	7,928	\$35,676,000	408		
2240507	Q	ROOSEVELT AVENUE	6781 (VAN WYCK EXPRESSWAY) - FLUSHING RIVER		WA		27	STATE	11/18/2020	4	5.479	GOOD	63,847	\$287,311,500	407	481	
2240640	MQ	ROOSEVELT ISLAND BRIDGE	EAST RIVER EAST CHANNEL		WMO		8	STATE	10/15/2020	5	5.681	GOOD	39,757	\$178,906,500	108	401	
2249420	R	ROSE AVENUE	STATEN ISLAND RAILWAY SOUTH SHORE	S	O		2	STATE	8/12/2019	5	4.076	FAIR	3,800	\$17,100,000	502		
2249410	R	ROSS AVENUE	STATEN ISLAND RAILWAY SOUTH SHORE	S	O		2	STATE	8/8/2019	5	4.458	FAIR	3,800	\$17,100,000	502		
2248200	Q	RUST STREET	FLUSHING AVENUE		O		1	STATE	7/18/2019	6	4.797	FAIR	2,940	\$13,230,000	405		
2230370	K	SACKETT STREET	2781 (BROOKLYN-QUEENS EXPRESSWAY)		A		2	STATE	3/12/2020	5	5.931	GOOD	4,965	\$22,342,500	306		
2244470	K	SEELEY STREET	PROSPECT AVENUE		O		1	STATE	4/23/2020	4	3.692	FAIR	8,496	\$38,232,000	307		
2249290	R	SEGUINE AVENUE	STATEN ISLAND RAILWAY SOUTH SHORE	S	O		1	STATE	8/13/2019	6	5.000	GOOD	3,250	\$14,625,000	503		
2248220	Q	SERVICE ROAD TURNAROUND	FLUSHING AVENUE		O		1	STATE	7/18/2019	6	4.847	FAIR	2,940	\$13,230,000	405		
2231329	K	BELT SYSTEM - SHORE PARKWAY	26TH AVENUE		A		1	STATE	3/4/2020	5	6.231	VGOOD	6,700	\$30,150,000	313		
2231319	K	BELT SYSTEM - SHORE PARKWAY	BAY PARKWAY		A		1	STATE	5/30/2019	4	4.700	FAIR	7,198	\$32,391,000	311		
2231249	K	BELT SYSTEM - SHORE PARKWAY	BAY RIDGE AVENUE		A		1	STATE	3/16/2020	7	6.885	VGOOD	5,024	\$22,608,000	310		
2231429	K	BELT SYSTEM - SHORE PARKWAY	BEDFORD AVENUE		A		3	STATE	3/25/2020	4	4.375	FAIR	11,941	\$53,734,500	315		

**BRIDGE INVENTORY SORTED BY FEATURE CARRIED**

BRIDGE ID #	BORO	FEATURE CARRIED	FEATURE CROSSED	RAIL ROAD	BRIDGE TYPE	OTHER OWNER	SPANS	RATING SOURCE	INSPECTION DATE	GENERAL RECOMMENDATION**	CURRENT RATING*	VERBAL RATING	DECK AREA (SQ FT)	REPLACEMENT COST	CD	CD2	CD3
2231509	K	BELT SYSTEM - SHORE PARKWAY	FRESH CREEK		WA		3	STATE	11/5/2019	6	6.225	VGOOD	40,095	\$180,427,500	356		
2231450	K	BELT SYSTEM - SHORE PARKWAY	GERRITSEN INLET		WA		3	STATE	8/11/2020	7	6.366	VGOOD	60,016	\$270,072,000	356		
2231439	K	BELT SYSTEM - SHORE PARKWAY	NOSTRAND AVENUE		A		3	STATE	5/12/2020	4	3.556	FAIR	11,154	\$50,193,000	315		
2231419	K	BELT SYSTEM - SHORE PARKWAY	OCEAN AVENUE		A		3	STATE	3/6/2020	4	4.250	FAIR	14,000	\$63,000,000	315		
2231360	K	BELT SYSTEM - SHORE PARKWAY	OCEAN PARKWAY		A		3	STATE	4/21/2020	6	6.400	VGOOD	29,637	\$133,366,500	313		
2231499	K	BELT SYSTEM - SHORE PARKWAY	ROCKAWAY PARKWAY		A		1	STATE	9/22/2020	6	5.789	GOOD	10,368	\$46,656,000	356		
2231409	K	BELT SYSTEM - SHORE PARKWAY	SHEEPSHEAD BAY ROAD		A		1	STATE	3/5/2020	5	4.393	FAIR	6,794	\$30,573,000	315		
2231472	K	BELT SYSTEM - SHORE PARKWAY EASTBOUND	MILL BASIN		WA		17	STATE	5/9/2019	7	5.930	GOOD	191,281	\$860,764,500	318		
2231482	K	BELT SYSTEM - SHORE PARKWAY EASTBOUND	PAERDEGAT BASIN		WA		5	STATE	11/21/2020	7	6.606	VGOOD	82,308	\$370,386,000	318		
2231471	K	BELT SYSTEM - SHORE PARKWAY WESTBOUND	MILL BASIN		WA		17	STATE	3/6/2020	7	6.507	VGOOD	143,282	\$644,679,000	318		
2231481	K	BELT SYSTEM - SHORE PARKWAY WESTBOUND	PAERDEGAT BASIN		WA		3	STATE	10/18/2019	7	6.449	VGOOD	50,325	\$226,462,500	318		
2240200	B	SHORE ROAD	HUTCHINSON RIVER		WMO		7	STATE	6/19/2020	4	4.295	FAIR	43,836	\$197,262,000	228		
2241390	B	SHORE ROAD CIRCLE	AMTRAK - CSX	AX	O		1	STATE	10/5/2020	6	6.531	VGOOD	8,106	\$36,477,000	228		
2249120	R	SIMONSON AVENUE	B&O RR (ABANDONED)	O	O		3	STATE	4/11/2019	6	5.871	GOOD	5,819	\$26,185,500	501		
2249860	R	SLATER BOULEVARD	NEW CREEK		WO		1	STATE	4/29/2019	5	5.684	GOOD	2,037	\$9,166,500	502		
2242220	B	SNUFF MILL ROAD	BRONX RIVER		WO	P	2	STATE	3/9/2020	4	5.088	GOOD	4,800	\$21,600,000	227		
2249200	R	SOUTH AVENUE	ARLINGTON YARD	C	O		3	STATE	8/18/2019	7	5.667	GOOD	8,493	\$38,218,500	501		
2231560	Q	SOUTH CONDUIT BOULEVARD	BELT SYSTEM - SOUTHERN PARKWAY		A		2	STATE	6/8/2020	5	5.435	GOOD	15,842	\$71,289,000	410		
2249770	R	SOUTH OF BROOKS LAKE	STREAM IN PARK		PEDESTRIAN- WO	P	3	CITY	11/6/2020	5	4.674	FAIR	700	\$3,150,000	501		
223201B	M	SOUTH STREET RAMP TO FDR DRIVE SOUTHBOUND	SOUTH STREET		AR		10	STATE	9/25/2020	5	4.462	FAIR	13,036	\$58,662,000	101		
226771D	M	SOUTHBOUND HENRY HUDSON PARKWAY RAMP TO 79TH STREET	79TH STREET BOAT BASIN GARAGE		AR	P	4	STATE	3/18/2020	5	4.779	FAIR	2,943	\$13,243,500	107		
2241080	B	SOUTHERN BOULEVARD	CSX PORT MORRIS - (ABANDONED)		O		1	STATE	5/18/2020	5	5.093	GOOD	3,900	\$17,550,000	201		
2242029	B	SOUTHERN BOULEVARD	EAST FORDHAM ROAD		O		2	STATE	3/19/2020	5	5.947	GOOD	13,390	\$60,255,000	227		
2268770	Q	SPRINGFIELD BOULEVARD	EQUESTRIAN PATH (ABANDONED)		O		1	STATE	4/22/2019	6	4.067	FAIR	1,619	\$7,285,500	413		
2231630	Q	SPRINGFIELD BOULEVARD	BELT SYSTEM - SOUTHERN PARKWAY		A		2	STATE	5/14/2020	4	5.632	GOOD	8,500	\$38,250,000	413		
2270890	R	SPRINGVILLE GREENWAY PEDESTRIAN	FRESHWATER WETLANDS		PEDESTRIAN- O	P	1	CITY	3/30/2020	7	6.869	VGOOD	273	\$1,228,500	502		
2243180	K	ST. JOHNS PLACE	FRANKLIN SHUTTLE	T	O		1	STATE	6/27/2019	7	6.594	VGOOD	2,300	\$10,350,000	308		
2241060	B	ST. MARYS AND CONCORD AVENUE	CSX PORT MORRIS - (ABANDONED)		O		1	STATE	5/8/2020	5	6.116	VGOOD	2,600	\$11,700,000	201		
2241700	B	ST. PAULS PLACE PEDESTRIAN BRIDGE	METRO NORTH RR HAR	M	PEDESTRIAN- O		2	CITY	3/15/2018	5	4.746	FAIR	888	\$3,996,000	203		
2269480	B	STARLIGHT PARK NORTH PEDESTRIAN BRIDGE	BRONX RIVER		PEDESTRIAN- WO	P	1	CITY	6/5/2019	6	6.844	VGOOD	1,906	\$8,577,000	209		
2269470	B	STARLIGHT PARK SOUTH PEDESTRIAN BRIDGE	BRONX RIVER		PEDESTRIAN- WO	P	1	CITY	11/3/2020	6	6.812	VGOOD	3,271	\$14,719,500	209		
2270170	R	STATEN ISLAND FERRY PEDESTRIAN BRIDGE	PARKING LOT EXIT ROADWAY		PEDESTRIAN- O	F	5	CITY	4/9/2020	5	5.600	GOOD	2,917	\$13,126,500	501		
2230610	Q	STEINWAY STREET	278I EASTBOUND (BROOKLYN-QUEENS EXPRESSWAY)		A		1	STATE	6/17/2020	6	6.465	VGOOD	5,146	\$23,157,000	401		
2230600	Q	STEINWAY STREET	278I WESTBOUND (BROOKLYN-QUEENS EXPRESSWAY)		A		1	STATE	6/17/2020	6	5.721	GOOD	5,229	\$23,530,500	401		
2243170	K	STERLING PLACE	FRANKLIN SHUTTLE	T	O		1	STATE	6/26/2019	6	6.617	VGOOD	2,300	\$10,350,000	308		
2240540	K	STILLWELL AVENUE	CONEY ISLAND CREEK		WO		2	STATE	5/10/2019	6	6.119	VGOOD	17,000	\$76,500,000	313		
2230350	K	SUMMIT STREET PEDESTRIAN BRIDGE	278I (BROOKLYN-QUEENS EXPRESSWAY)		PEDESTRIAN- A		2	CITY	4/6/2020	4	4.186	FAIR	1,400	\$6,300,000	306		
2231650	Q	SUNRISE HIGHWAY WESTBOUND	BELT SYSTEM - LAURELTON PARKWAY EASTBOUND		A		1	STATE	5/1/2020	4	4.554	FAIR	4,100	\$18,450,000	413		
2231660	Q	SUNRISE HIGHWAY WESTBOUND	BELT SYSTEM - LAURELTON PARKWAY WESTBOUND		A		2	STATE	3/25/2020	5	4.644	FAIR	5,476	\$24,642,000	413		
2231800	Q	SUPERIOR ROAD	BELT SYSTEM - CROSS ISLAND PARKWAY		A		2	STATE	4/10/2020	5	5.658	GOOD	6,837	\$30,766,500	413		
2243890	K	SUTTER AVENUE	LIRR BAY RIDGE	N	O		3	STATE	9/21/2020	6	4.750	FAIR	5,607	\$25,231,500	316		
2240310	K	THIRD AVENUE BRIDGE	GOWANUS CANAL		WO		1	STATE	4/26/2019	6	6.550	VGOOD	3,765	\$16,942,500	306		

**BRIDGE INVENTORY SORTED BY FEATURE CARRIED**

BRIDGE ID #	BORO	FEATURE CARRIED	FEATURE CROSSED	RAIL ROAD	BRIDGE TYPE	OTHER OWNER	SPANS	RATING SOURCE	INSPECTION DATE	GENERAL RECOMMENDATION**	CURRENT RATING*	VERBAL RATING	DECK AREA (SQ FT)	REPLACEMENT COST	CD	CD2	CD3
2240069	BM	THIRD AVENUE BRIDGE	HARLEM RIVER		WMO		14	STATE	7/26/2020	6	5.944	GOOD	85,382	\$384,219,000	111	201	
2240250	K	THIRD STREET	GOWANUS CANAL		WMO		5	STATE	4/29/2019	5	5.344	GOOD	5,088	\$22,896,000	306		
2247300	Q	THOMSON AVENUE	AMTRAK & LIRR YARD	AL	O		14	STATE	11/14/2020	6	5.569	GOOD	60,246	\$271,107,000	402		
2240041	Q	TO THOMSON AVENUE FROM NEW YORK	JACKSON AVENUE	L	OE		39	STATE	10/14/2020	5	4.593	FAIR	59,100	\$265,950,000	402		
2241170	B	TIFFANY STREET	AMTRAK - CSX	AX	O		1	STATE	1/15/2020	6	4.636	FAIR	7,267	\$32,701,500	202		
2249040	R	TOMPkins AVENUE	B&O RR (ABANDONED)		O		1	STATE	4/2/2020	6	6.156	VGOOD	5,096	\$22,932,000	501		
2249840	R	TOMPkins AVENUE	GREENFIELD AVENUE		O		1	STATE	2/13/2020	6	4.364	FAIR	2,690	\$12,105,000	501		
2249510	R	TOMPkins AVENUE	WILLOW AVENUE, STATEN ISLAND RAILWAY	S	O		2	STATE	10/6/2020	5	5.284	GOOD	5,351	\$24,079,500	501		
2246410	M	TRANSVERSE ROAD #1 EASTBOUND (DENESMOUTH ARCH)	PEDESTRIAN PATH OPPOSITE EAST 65TH STREET		O	P	1	STATE	1/27/2020	5	5.231	GOOD	1,786	\$8,037,000	184		
2245380	M	TRANSVERSE ROAD #1 WESTBOUND	PEDESTRIAN PATH OPPOSITE EAST 66TH STREET		O	P	1	STATE	1/6/2020	5	5.269	GOOD	1,505	\$6,772,500	184		
2249870	R	TRAVIS AVENUE	MAIN CREEK		WO		1	STATE	10/22/2019	5	4.283	FAIR	1,700	\$7,650,000	502		
2246560	M	TUDOR CITY PLACE	EAST 42ND STREET		O		1	STATE	1/23/2020	5	6.033	VGOOD	6,615	\$29,767,500	106		
2249170	R	UNION AVENUE	B&O RR (ABANDONED)	O	O		4	STATE	4/19/2019	5	4.419	FAIR	6,630	\$29,835,000	501		
2230360	K	UNION STREET	2781 (BROOKLYN-QUEENS EXPRESSWAY)		A		2	STATE	3/12/2020	4	5.653	GOOD	4,965	\$22,342,500	306		
2243200	K	UNION STREET	FRANKLIN SHUTTLE	T	O		2	STATE	6/12/2020	5	4.327	FAIR	4,100	\$18,450,000	309		
2240270	K	UNION STREET	GOWANUS CANAL		WMO		5	STATE	10/1/2020	4	3.264	FAIR	4,943	\$22,243,500	306		
2247040	Q	UNION STREET	LIRR PORT WASHINGTON BRANCH	L	O		1	STATE	10/1/2019	6	5.891	GOOD	3,180	\$14,310,000	407		
2248129	Q	UNION TURNPIKE	CREEDMOORE HOSPITAL ROAD		O		1	STATE	7/5/2019	5	5.808	GOOD	3,518	\$15,831,000	413		
2231850	Q	UNION TURNPIKE	BELT SYSTEM - CROSS ISLAND PARKWAY		A		2	STATE	5/5/2020	4	4.132	FAIR	14,520	\$65,340,000	413		
2230180	Q	UNION TURNPIKE	JACKIE ROBINSON PARKWAY		A		1	STATE	2/18/2020	6	5.406	GOOD	5,426	\$24,417,000	482		
2241330	B	UNIONPORT ROAD	AMTRAK - CSX	AX	O		1	STATE	10/19/2020	5	5.375	GOOD	7,709	\$34,690,500	211		
2231910	Q	UTOPIA PARKWAY	BELT SYSTEM - CROSS ISLAND PARKWAY		A		2	STATE	2/25/2020	5	4.559	FAIR	7,200	\$32,400,000	407		
2229550	B	VAN CORTLANDT EQUESTRIAN	HENRY HUDSON PARKWAY		PEDESTRIAN-A	P	2	CITY	7/7/2020	5	4.615	FAIR	2,100	\$9,450,000	226		
2229540	B	VAN CORTLANDT PARK	HENRY HUDSON PARKWAY		PEDESTRIAN-A	P	2	CITY	7/7/2020	5	4.684	FAIR	3,900	\$17,550,000	226		
2249130	R	VAN NAME AVENUE	B&O RR (ABANDONED)	O	O		3	STATE	4/30/2019	5	5.871	GOOD	5,474	\$24,633,000	501		
2249140	R	VAN PELT AVENUE	B&O RR (ABANDONED)	O	O		3	STATE	4/15/2019	6	5.209	GOOD	5,000	\$22,500,000	501		
2241070	B	WALEs AVENUE	CSX PORT MORRIS - (ABANDONED)		O		1	STATE	5/8/2020	6	6.817	VGOOD	2,535	\$11,407,500	201		
2241410	B	WALTON AVENUE	METRO NORTH RR HUD	M	O		1	STATE	6/5/2020	4	4.855	FAIR	3,600	\$16,200,000	204		
2240620	M	WARDS ISLAND PEDESTRIAN BRIDGE	HARLEM RIVER		PEDESTRIAN-WMO		10	CITY	8/27/2020	5	4.933	FAIR	19,500	\$87,750,000	111		
2243250	K	WASHINGTON AVENUE	FRANKLIN SHUTTLE	T	O		1	STATE	6/17/2020	5	4.641	FAIR	5,957	\$26,806,500	309	355	
2068919	BM	WASHINGTON BRIDGE	HARLEM RIVER	M	WO		9	STATE	1/13/2020	3	5.167	GOOD	128,339	\$577,525,500	112	205	204
226672A	M	WEST 31ST STREET	AMTRAK LAYUP TRACKS	A	O		9	STATE	12/27/2018	5	3.255	FAIR	8,800	\$39,600,000	104		
224501B	M	WEST 33RD STREET	AMTRAK 30TH STREET BRANCH	A	OR		8	STATE	2/21/2020	4	4.444	FAIR	16,500	\$74,250,000	104		
224501D	M	WEST 34TH STREET	AMTRAK 30TH STREET BRANCH	A	OR		4	STATE	4/26/2019	5	5.042	GOOD	11,800	\$53,100,000	104		
224501E	M	WEST 35TH STREET	AMTRAK 30TH STREET BRANCH	A	OR		3	STATE	10/6/2020	4	4.206	FAIR	6,540	\$29,430,000	104		
224501F	M	WEST 36TH STREET	AMTRAK 30TH STREET BRANCH	A	OR		3	STATE	11/20/2019	5	5.642	GOOD	5,580	\$25,110,000	104		
2245060	M	WEST 37TH STREET	AMTRAK 30TH STREET BRANCH	A	O		3	STATE	10/11/2019	6	6.691	VGOOD	7,140	\$32,130,000	104		
2245070	M	WEST 38TH STREET	AMTRAK 30TH STREET BRANCH	A	O		2	STATE	5/1/2020	5	4.155	FAIR	6,180	\$27,810,000	104		
2245080	M	WEST 39TH STREET	AMTRAK 30TH STREET BRANCH	A	O		3	STATE	5/1/2020	5	4.269	FAIR	6,279	\$28,255,500	104		
2245440	M	WEST 40TH STREET	AMTRAK 30TH STREET BRANCH	A	O		4	STATE	8/14/2020	5	3.972	FAIR	9,420	\$42,390,000	104		
2245330	M	WEST 41ST STREET	AMTRAK 30TH STREET BRANCH	A	O		3	STATE	9/4/2020	5	4.074	FAIR	6,240	\$28,080,000	104		
2245210	M	WEST 42ND STREET	AMTRAK 30TH STREET BRANCH	A	O		4	STATE	11/16/2020	5	4.288	FAIR	10,300	\$46,350,000	104		

**BRIDGE INVENTORY SORTED BY FEATURE CARRIED**

BRIDGE ID #	BORO	FEATURE CARRIED	FEATURE CROSSED	RAIL ROAD	BRIDGE TYPE	OTHER OWNER	SPANS	RATING SOURCE	INSPECTION DATE	GENERAL RECOMMENDATION**	CURRENT RATING*	VERBAL RATING	DECK AREA (SQ FT)	REPLACEMENT COST	CD	CD2	CD3
2245090	M	WEST 43RD STREET	AMTRAK 30TH STREET BRANCH	A	O		2	STATE	3/20/2020	5	5.059	GOOD	4,140	\$18,630,000	104		
2245100	M	WEST 44TH STREET	AMTRAK 30TH STREET BRANCH	A	O		2	STATE	3/20/2020	5	4.588	FAIR	4,080	\$18,360,000	104		
2245110	M	WEST 45TH STREET	AMTRAK 30TH STREET BRANCH	A	O		2	STATE	4/10/2020	5	5.000	GOOD	4,080	\$18,360,000	104		
2245120	M	WEST 46TH STREET	AMTRAK 30TH STREET BRANCH	A	O		2	STATE	4/10/2020	5	4.676	FAIR	4,140	\$18,630,000	104		
2245130	M	WEST 47TH STREET	AMTRAK 30TH STREET BRANCH	A	O		2	STATE	4/29/2020	5	4.460	FAIR	4,140	\$18,630,000	104		
2245140	M	WEST 48TH STREET	AMTRAK 30TH STREET BRANCH	A	O		2	STATE	4/29/2020	5	4.111	FAIR	4,140	\$18,630,000	104		
2245150	M	WEST 49TH STREET	AMTRAK 30TH STREET BRANCH	A	O		3	STATE	5/27/2020	5	4.279	FAIR	4,140	\$18,630,000	104		
2245340	M	WEST 50TH STREET	AMTRAK 30TH STREET BRANCH	A	O		2	STATE	7/24/2020	5	4.297	FAIR	4,080	\$18,360,000	104		
2245160	M	WEST 51ST STREET	AMTRAK 30TH STREET BRANCH	A	O		2	STATE	5/8/2020	5	4.328	FAIR	4,260	\$19,170,000	104		
2245170	M	WEST 52ND STREET	AMTRAK 30TH STREET BRANCH	A	O		2	STATE	5/8/2020	5	4.781	FAIR	4,260	\$19,170,000	104		
2245180	M	WEST 53RD STREET	AMTRAK 30TH STREET BRANCH	A	O		2	STATE	7/24/2020	5	4.656	FAIR	5,082	\$22,869,000	104		
2245350	M	WEST 54TH STREET	AMTRAK 30TH STREET BRANCH	A	O		2	STATE	7/24/2020	5	4.661	FAIR	4,680	\$21,060,000	104		
2245360	M	WEST 55TH STREET	AMTRAK 30TH STREET BRANCH	A	O		2	STATE	7/24/2020	5	4.619	FAIR	4,320	\$19,440,000	104		
2245370	M	WEST 56TH STREET	AMTRAK 30TH STREET BRANCH	A	O		2	STATE	7/24/2020	5	4.778	FAIR	4,380	\$19,710,000	104		
2245220	M	WEST 57TH STREET	AMTRAK 30TH STREET BRANCH	A	O		3	STATE	7/24/2020	5	4.937	FAIR	9,100	\$40,950,000	104		
2245190	M	WEST 58TH STREET	AMTRAK 30TH STREET BRANCH	A	O		2	STATE	7/24/2020	5	4.221	FAIR	3,900	\$17,550,000	104		
2246010	M	WEST 62ND STREET PEDESTRIAN BRIDGE (PINEBANK ARCH)	BRIDLE PATH		PEDESTRIAN-O	P	1	CITY	7/11/2019	5	4.630	FAIR	1,000	\$4,500,000	164		
2269980	M	WEST 64TH STREET	AMTRAK	A	O		2	STATE	9/30/2020	6	6.731	VGOOD	5,177	\$23,296,500	107		
2245420	M	WEST 65TH STREET ENTRANCE EASTBOUND	BRIDLE PATH WEST END		O	P	1	STATE	1/9/2020	5	5.269	GOOD	1,436	\$6,462,000	164		
2269390	M	WEST 66TH STREET	AMTRAK	A	O		2	STATE	9/30/2020	6	6.552	VGOOD	4,469	\$20,110,500	107		
2269210	M	WEST 68TH STREET	AMTRAK	A	O		3	STATE	11/5/2019	7	6.731	VGOOD	5,382	\$24,219,000	107		
2269190	M	WEST 70TH STREET	AMTRAK	A	O		3	STATE	10/30/2019	6	6.278	VGOOD	17,258	\$77,661,000	107		
2246140	M	WEST 72ND STREET ENTRANCE (RIFTSTONE ARCH)	BRIDLE PATH		O	P	1	STATE	1/7/2020	5	5.654	GOOD	3,700	\$16,650,000	164		
222928D	M	WEST 72ND STREET RAMP TO HENRY HUDSON PARKWAY NORTHBOUND	RELIEF		AR		1	STATE	6/1/2020	7	6.259	VGOOD	1,764	\$7,938,000	107		
2246460	M	WEST 77TH STREET ENTRANCE (EAGLEVALE ARCH)	PEDESTRIAN PATH OPPOSITE WEST 77TH STREET		O	P	2	STATE	1/24/2020	4	5.235	GOOD	3,066	\$13,797,000	164		
2246340	M	WEST 77TH STREET PEDESTRIAN (LADIES POND BRIDGE)	STREAM TO THE LAKE		PEDESTRIAN-WO	P	3	CITY	10/15/2020	5	4.742	FAIR	500	\$2,250,000	164		
2246320	M	WEST 77TH STREET PEDESTRIAN (OAK BRIDGE)	THE LAKE		PEDESTRIAN-WO	P	3	CITY	8/28/2020	5	5.474	GOOD	992	\$4,464,000	164		
2229290	M	WEST 79TH STREET	AMTRAK	A	A		1	STATE	4/8/2020	5	4.068	FAIR	4,538	\$20,421,000	107		
2246390	M	WEST 86TH STREET PEDESTRIAN (SOUTHWEST RESERVOIR BRIDGE)	BRIDLE PATH		PEDESTRIAN-O	P	3	CITY	10/5/2020	4	4.544	FAIR	1,100	\$4,950,000	164		
2246430	M	WEST 110TH STREET ENTRANCE (MOUNTCLIFF ARCH)	PEDESTRIAN PATH OPPOSITE WEST 109TH STREET		O	P	1	STATE	1/28/2020	4	4.433	FAIR	1,364	\$6,138,000	164		
2246670	M	WEST 134TH STREET	TERRAIN		O		4	STATE	4/26/2019	5	6.452	VGOOD	7,500	\$33,750,000	109		
2245230	M	WEST 148TH STREET PEDESTRIAN BRIDGE	AMTRAK 30TH STREET BRANCH	A	PEDESTRIAN-O	P	5	CITY	6/12/2020	3	3.183	FAIR	1,100	\$4,950,000	109		
227128A	M	WEST 151ST STREET PEDESTRIAN -WEST RAMP	RIVERSIDE PARK		PEDESTRIAN-A	P	8	CITY	8/18/2020	6	6.448	VGOOD	3,375	\$15,187,500	109		
2246710	M	WEST 153RD STREET	A.C. POWELL BOULEVARD		O		1	STATE	1/17/2020	4	4.700	FAIR	3,082	\$13,869,000	110		
2245290	M	WEST 155TH STREET PEDESTRIAN BRIDGE	AMTRAK 30TH STREET BRANCH	A	PEDESTRIAN-O		3	CITY	6/9/2020	1	3.750	CLOSED	800	\$3,600,000	109	112	
2245250	M	WEST 158TH STREET	AMTRAK 30TH STREET BRANCH	A	O		7	STATE	10/22/2019	6	5.667	GOOD	20,219	\$90,985,500	112		
2271590	M	WEST 158TH STREET PEDESTRIAN BRIDGE	FORT WASHINGTON PARK		PEDESTRIAN-O	P	20	CITY	10/13/2020	5	5.131	GOOD	5,620	\$25,290,000	112		
2245260	M	WEST 173RD STREET PEDESTRIAN BRIDGE	AMTRAK 30TH STREET BRANCH	A	PEDESTRIAN-O	P	2	CITY	5/31/2020	4	4.600	FAIR	1,500	\$6,750,000	112		
2246600	M	WEST 176TH STREET PEDESTRIAN BRIDGE	APPROACH TO GEORGE WASHINGTON BRIDGE		PEDESTRIAN-O	P	1	CITY	4/27/2020	4	4.533	FAIR	1,200	\$5,400,000	112		
2246489	M	WEST 181ST STREET	RAMP TO WASHINGTON BRIDGE		O		1	STATE	1/23/2020	5	6.267	VGOOD	8,232	\$37,044,000	112		
2229400	M	WEST 181ST STREET PEDESTRIAN BRIDGE	HENRY HUDSON PARKWAY NORTHBOUND		PEDESTRIAN-A	P	7	CITY	1/13/2021	4	4.317	FAIR	1,500	\$6,750,000	112		
M00001	M	WEST 191ST STREET PEDESTRIAN	BROADWAY - IRT #1 SUBWAY		PEDESTRIAN-O		1	CITY	12/9/2020	4	4.000	FAIR	2,000	\$9,000,000	112		



**BRIDGE INVENTORY SORTED BY FEATURE CARRIED**

BRIDGE ID #	BORO	FEATURE CARRIED	FEATURE CROSSED	RAIL ROAD	BRIDGE TYPE	OTHER OWNER	SPANS	RATING SOURCE	INSPECTION DATE	GENERAL RECOMMENDATION**	CURRENT RATING*	VERBAL RATING	DECK AREA (SQ FT)	REPLACEMENT COST	CD	CD2	CD3
2241940	B	WEST 205TH STREET	NYCTA IND YARDS	T	O		4	STATE	12/15/2020	6	5.903	GOOD	32,508	\$146,286,000	207		
2240120	BM	WEST 207TH STREET/WEST FORDHAM RD	HARLEM RIVER		WMO		5	STATE	6/12/2020	5	5.208	GOOD	31,784	\$143,028,000	112	207	
2241489	B	WEST 225TH STREET	METRO NORTH RR YARD TRACKS	M	O		2	STATE	10/10/2020	6	6.075	VGOOD	10,900	\$49,050,000	207	208	
2241490	B	WEST 230TH STREET	CSX PUTNAM (ABANDONED)		O		1	STATE	5/9/2019	5	6.312	VGOOD	5,902	\$26,559,000	208		
2241509	B	WEST 231ST STREET	CSX PUTNAM (ABANDONED)		O		1	STATE	5/19/2020	5	5.847	GOOD	4,723	\$21,253,500	208		
2229450	B	WEST 232ND STREET	HENRY HUDSON PARKWAY		A		2	STATE	6/14/2019	5	6.467	VGOOD	4,900	\$22,050,000	208		
2241510	B	WEST 233RD STREET	CSX PUTNAM (ABANDONED)		O		1	STATE	5/9/2019	5	5.043	GOOD	3,760	\$16,920,000	208		
2241520	B	WEST 234TH STREET	CSX PUTNAM (ABANDONED)		O		1	STATE	5/9/2019	5	5.255	GOOD	3,770	\$16,965,000	208		
2229460	B	WEST 236TH STREET PEDESTRIAN BRIDGE	HENRY HUDSON PARKWAY		PEDESTRIAN-A		3	CITY	7/30/2019	4	4.390	FAIR	2,500	\$11,250,000	208		
2229470	B	WEST 239TH STREET	HENRY HUDSON PARKWAY		A		2	STATE	5/23/2019	5	5.421	GOOD	6,100	\$27,450,000	208		
2229490	B	WEST 246TH STREET	HENRY HUDSON PARKWAY		A		2	STATE	7/8/2019	5	5.079	GOOD	5,600	\$25,200,000	208		
2229500	B	WEST 252ND STREET	HENRY HUDSON PARKWAY		A		2	STATE	3/12/2020	5	5.123	GOOD	4,500	\$20,250,000	208		
2231860	Q	WEST ALLEY ROAD	BELT SYSTEM - CROSS ISLAND PARKWAY		A		2	STATE	8/14/2019	5	5.789	GOOD	7,200	\$32,400,000	411		
2246120	M	WEST DRIVE	TRANSVERSE ROAD #1		O	P	1	STATE	2/14/2020	4	3.462	FAIR	7,011	\$31,549,500	164		
2246240	M	WEST DRIVE	TRANSVERSE ROAD #2		O	P	1	STATE	2/21/2020	4	5.346	GOOD	6,396	\$28,782,000	164		
2246260	M	WEST DRIVE	TRANSVERSE ROAD #3		O	P	1	STATE	2/19/2020	5	5.346	GOOD	4,592	\$20,664,000	164		
2246280	M	WEST DRIVE	TRANSVERSE ROAD #4		O	P	1	STATE	2/7/2020	4	4.269	FAIR	3,920	\$17,640,000	164		
2246330	M	WEST DRIVE (BALCONY BRIDGE)	STREAM TO THE LAKE		WO	P	1	STATE	1/7/2020	5	5.846	GOOD	1,884	\$8,478,000	164		
2246080	M	WEST DRIVE (DALEHEAD ARCH)	BRIDLE OPPOSITE WEST 64TH STREET		O	P	1	STATE	1/10/2020	5	6.308	VGOOD	2,050	\$9,225,000	164		
2246000	M	WEST DRIVE (GREYSHOT ARCH)	PEDESTRIAN PATH BETWEEN 61ST AND 62ND STREETS		O	P	1	STATE	1/16/2020	5	5.808	GOOD	2,561	\$11,524,500	164		
2244020	K	WEST DRIVE (MEADOWPORT ARCH)	PEDESTRIAN PATH NEAR GRAND ARMY PLAZA		O	P	1	STATE	4/15/2019	5	5.875	GOOD	2,500	\$11,250,000	355		
2246360	M	WEST DRIVE (WINTERDALE ARCH)	PEDESTRIAN PATH OPPOSITE WEST 82ND STREET		O	P	1	STATE	1/8/2020	5	5.808	GOOD	2,613	\$11,758,500	164		
2249480	R	WEST FINGERBOARD ROAD	STATEN ISLAND RAILWAY SOUTH SHORE	S	O		2	STATE	9/5/2019	6	5.583	GOOD	5,279	\$23,755,500	502		
2249710	R	WEST FOOTBRIDGE	CLOVE LAKE		PEDESTRIAN-WO	P	2	CITY	8/18/2020	4	3.714	FAIR	900	\$4,050,000	501		
2244100	K	WEST FOOTBRIDGE (MUSIC GROVE BRIDGE)	PROSPECT PARK STREAM		PEDESTRIAN-WO	P	1	CITY	9/11/2020	5	4.885	FAIR	308	\$1,386,000	355		
2241470	B	WEST FORDHAM ROAD	METRO NORTH RR HUD	M	O		4	STATE	10/29/2019	6	5.208	GOOD	16,052	\$72,234,000	207		
2241460	B	WEST TREMONT AVENUE	METRO NORTH RR HUD	M	O		8	STATE	6/22/2020	4	4.492	FAIR	12,900	\$58,050,000	205		
2241230	B	WESTCHESTER AVENUE	AMTRAK - CSX	AX	O		3	STATE	12/11/2018	6	5.191	GOOD	15,600	\$70,200,000	202	209	
2240180	B	WESTCHESTER AVENUE	BRONX RIVER		WO		1	STATE	7/26/2019	5	5.153	GOOD	5,490	\$24,705,000	202	209	
2241000	B	WESTCHESTER AVENUE	CSX PORT MORRIS - (ABANDONED)		O		1	STATE	7/9/2020	5	5.655	GOOD	3,000	\$13,500,000	201		
2075837	B	WESTCHESTER AVENUE	HUTCHINSON RIVER PARKWAY		A		2	STATE	4/17/2020	4	4.722	FAIR	15,858	\$71,361,000	210	211	
2241329	B	WHITE PLAINS ROAD	AMTRAK - CSX	AX	O		1	STATE	10/13/2020	5	4.781	FAIR	10,238	\$46,071,000	211		
2248020	Q	WHITELAW PEDESTRIAN BRIDGE	NORTH AND SOUTH CONDUIT AVENUE		PEDESTRIAN-O		7	CITY	11/4/2019	4	4.181	FAIR	5,500	\$24,750,000	410		
1065210	Q	WHITESTONE EXPRESSWAY NORTHBOUND	BELT SYSTEM - CROSS ISLAND PARKWAY		A		1	STATE	6/1/2020	5	5.475	GOOD	2,480	\$11,160,000	407		
2266160	Q	WHITESTONE EXPRESSWAY 678I SOUTHBOUND TO BELT SYSTEM - CROSS ISLAND EASTBOUND	678I - BELT SYSTEM - CROSS ISLAND PARKWAY JUNCTION		A		1	STATE	5/29/2020	4	3.786	FAIR	2,512	\$11,304,000	407		
2241369	B	WILLIAMSBRIDGE ROAD	AMTRAK - CSX	AX	O		2	STATE	10/5/2020	5	5.556	GOOD	6,510	\$29,295,000	211		
2240039	KM	WILLIAMSBRIDGE BRIDGE	EAST RIVER	T	WEO		53	STATE	10/19/2020	5	4.319	FAIR	780,390	\$3,511,755,000	103	301	
2240059	BM	WILLIS AVENUE BRIDGE	HARLEM RIVER		WMO		15	STATE	9/17/2020	7	6.211	VGOOD	96,087	\$432,391,500	111	201	
2248019	Q	WOODHAVEN BOULEVARD	ATLANTIC AVENUE		O		3	STATE	5/20/2020	4	4.257	FAIR	19,832	\$89,244,000	409		
2248159	Q	WOODHAVEN BOULEVARD	QUEENS BOULEVARD		O		2	STATE	7/16/2020	4	4.588	FAIR	11,498	\$51,741,000	404		
2230540	Q	WOODSIDE AVENUE	278I (BROOKLYN-QUEENS EXPRESSWAY)		A		1	STATE	2/14/2020	6	5.719	GOOD	7,308	\$32,886,000	402		
2247400	Q	WOODSIDE AVENUE	CSX TRANSPORT	X	O		1	STATE	10/28/2019	5	6.038	VGOOD	4,970	\$22,365,000	402	404	

**BRIDGE INVENTORY SORTED BY FEATURE CARRIED**

BRIDGE ID #	BORO	FEATURE CARRIED	FEATURE CROSSED	RAIL ROAD	BRIDGE TYPE	OTHER OWNER	SPANS	RATING SOURCE	INSPECTION DATE	GENERAL RECOMMENDATION**	CURRENT RATING*	VERBAL RATING	DECK AREA (SQ FT)	REPLACEMENT COST	CD	CD2	CD3
2247120	Q	WOODSIDE AVENUE	LIRR MAIN LINE	L	O		3	STATE	8/6/2020	4	4.667	FAIR	15,750	\$70,875,000	402		
798 OPEN BRIDGES			OPEN SPANS 4,976									OPEN SF	15,651,405	\$70,434,922,500	ALL		

**VEHICULAR TUNNEL INVENTORY**

<b>TUNNEL IDENTIFICATION NUMBER</b>	<b>BORO</b>	<b>FEATURE CARRIED</b>	<b>FEATURE CROSSED</b>	<b>TUNNEL TYPE</b>	<b>SPANS</b>	<b>RATING SOURCE</b>	<b>*INSPECTION DATE</b>	<b>DECK AREA</b>	<b>REPLACEMENT COST</b>	<b>CD</b>	<b>CD2</b>
NYCDOTN3101	M	EAST 34TH STREET (2246540)	PARK AVENUE TUNNEL	OT	1	CITY	10/14/20	36,200	\$162,900,000	105	106
NYCDOTN3102	M	EAST 42ND STREET - EAST 47TH STREET (2246570)	FIRST AVENUE TUNNEL	OT	2	CITY	10/15/20	95,000	\$427,500,000	106	
NYCDOTN3103	M	BATTERY PLACE (2232000)	FDR DRIVE	AT	2	CITY	09/03/19	142,000	\$639,000,000	101	
NYCDOTN3104	M	WEST STREET (2267380)	RECTOR STREET - BROOKLYN BATTERY TUNNEL MANHATTAN PLAZA	AT	1	CITY	07/26/19	25,760	\$115,920,000	101	
*There is no rating scale for the tunnels - no conversion is available with the new rating system. The ratings shown in the last several annual reports were from the pre-2016 system.											

## STATEN ISLAND CULVERTS

BIN	FEATURE CARRIED	FEATURE CROSSED	BRIDGE TYPE	SPANS	SOURCE	
R00141	ALTER AVE	STORM&GRND FED STREAM		0	1	CITY
R00036	AMBOY ROAD	ARBUTUS AVE		0	1	CITY
R00133	ARDEN AVE	HALPIN AVE		0	1	CITY
R00105	ARTHUR KILL ROAD	CLARKE AVENUE		0	1	CITY
R00086	ARTHUR KILL ROAD	ENGLEWOOD ST		0	1	CITY
R00084	ARTHUR KILL ROAD	MULDOON AVE		0	1	CITY
R00085	ARTHUR KILL ROAD	150' N.W. ELLIS ROAD		0	1	CITY
R00106	ARTHUR KILL ROAD	RICHMONDTOWN ROAD		0	1	CITY
R00122	ARTHUR KILL ROAD	RIDGEWOOD AVE		0	1	CITY
R00103	AULTMAN AVE	ST GEORGE ROAD		0	2	CITY
R00005	BIDWELL AVE	COLUMBUS PLACE		0	1	CITY
R00035	BRADLEY AVE	WILLOWBROOK ROAD		0	1	CITY
R00077	BUCHANAN AVE	HAROLD ST		0	1	CITY
R00139	DE PEW PL	MAGUIRE AVE		0	1	CITY
R00004	DICKIE AVE	NEAR COLUMBUS PLACE		0	1	CITY
R00027	ELEANOR ST	ROCKLAND AVE		0	1	CITY
R00011	FOREST AVE	CRYSTAL AVE		0	1	CITY
R00068	FOREST AVE	RANDALL AVE		0	1	CITY
R00041	93 FOSTER ROAD	AMBOY ROAD		0	1	CITY
R00010	GALLOWAY AVE	MARIANNE ST		0	1	CITY
R00016	GRAHAM BLVD	JAY ST		0	2	CITY
R00025	GREELEY AVE	SANILAC ST		0	1	CITY
R00069	GREGG PLACE	RANDALL AVE		0	1	CITY
R00051	HARBOR ROAD	DUBLIN PLACE		0	1	CITY
R00065	HENDERSON AVE	WESTBURY AVE		0	1	CITY
R00138	HOLLAND AVE	BENJAMIN PLACE		0	1	CITY
R00021	HUNTER AVE	IDLEASE PLACE		0	1	CITY
R00135	HYLAN BLVD	CORNELIA AVE		0	1	CITY
R00022	IDLEASE PLACE	HUNTER AVE		0	1	CITY
R00062	KISSEL AVE	SNUG HARBOR ROAD		0	1	CITY
R00042	LEDYARD PLACE	LACONIA AVE		0	1	CITY
R00024	LINCOLN AVE	SANILAC ST		0	1	CITY
R00038	MAGUIRE AVE	DEPEW PLACE		0	1	CITY
R00040	113 MAGUIRE AVE	DEPEW PLACE		0	1	CITY
R00095	MEISNER AVE	ROCKLAND AVE		0	1	CITY
R00023	MIDLAND AVE	HYLAN BLVD		0	1	CITY
R00013	NAUGHTON AVE	PATTERSON AVE		0	3	CITY
R00015	OLYMPIA BLVD	SLATER AVE		0	1	CITY
R00097	RICHMOND HILL ROAD	RICHMOND ROAD		0	1	CITY
R00046	RICHMOND TERRACE	SNUG HARBOUR		0	2	CITY
R00137	RICHMOND TERRACE	WESTERN AVE		0	2	CITY
R00034	ROCKLAND AVE	BRIELLE AVE		0	1	CITY
R00096	ROCKLAND AVE	MANOR ROAD		0	1	CITY
R00076	ROOSEVELT AVE	HAROLD ST		0	1	CITY
R00101	ST ANDREWS ROAD	LIGHTHOUSE AVE		0	1	CITY
R00032	SEGUINE AVE	PURDY PLACE		0	1	CITY
R00060	SIGNS ROAD	VICTORY BLVD		0	1	CITY
R00136	SNUG HARBOR ROAD	KISSEL AVE		0	1	CITY
R00114	SWEET BROOK ROAD	RIDGEWOOD ROAD		0	1	CITY
R00031	TARLTON ST	GREAT KILLS LANE		0	1	CITY
R00055	TRAVIS AVE	VICTORY BLVD		0	1	CITY
R00115	VICTORY BLVD	CLOVES LAKE PARK		0	3	CITY
R00059	WESTERN AVE	RR BRIDGE		WO	1	CITY

Revised 2/26/13



Eric Adams  
Mayor



Ydanis Rodriguez  
Commissioner