

NEW YORK CITY

2018

BEACH SURVEILLANCE AND MONITORING PROGRAM



Photo by DOHMH Beach Program Staff

TABLE OF CONTENTS

1	INTRODUCTION	1
1.1	Public Risk Communication	3
2	BACKGROUND INFORMATION	5
2.1	Water Quality Criteria	5
2.2	Rainfall Events	5
2.3	Beach Classifications	6
2.4	Beach Monitoring and Surveillance	7
2.5	Public Notification and Risk Communication	8
2.6	Inspections.....	9
3	FINDINGS	10
3.1	Water Quality and Illness Reporting	10
3.2	Public Notification for Warnings and Closures	10
3.3	Inspections.....	11
	APPENDIX A: 2018 WATER QUALITY RESULTS AND EXCEEDANCE	12
	Table A1-1: Brooklyn Beaches Water Quality Results.....	12
	Table A1-2: Bronx Beaches Water Quality Results.....	13
	Table A1-3: Queens Beaches Water Quality Results.....	14
	Table A1-4: Staten Island Beaches Water Quality Results	15
	Table A2-1: 2018 Summary of Beach Samples and Single-Sample Exceedances.....	16
	Table A2-2: 2018 Public Beaches Samples and Single-Sample Exceedances.....	16
	Table A2-3: 2018 Private Beaches Samples and Single-Sample Exceedances	17
	APPENDIX B: 2018 WARNINGS AND CLOSURES.....	18
	Table B-1: Summary of Beach Warnings and Closure	18
	Table B-2: Public Beaches Warnings and Closures	Error! Bookmark not defined.
	Table B-3: Private Beaches Warnings and Closures	Error! Bookmark not defined.
	APPENDIX C: 2018 INSPECTION SUMMARY	23
	Table C-1: Inspection Non-Compliance Summary	23

LIST OF TABLES & FIGURES

Figure 1: New York City Permitted Beaches	2
Table 1: New York City Permitted Beaches and Water Body Identification	3
Figure 2: Beach Warning and Closed Signs	3
Figure 3: Know Before You Go Texting Program	4
Table 2: New York City Pre-emptive Rainfall Thresholds.....	6

SECTION 1

INTRODUCTION

In accordance with the New York City Administrative Code §18-131(c)(4), this annual report summarizes the 2018 New York City Beach Surveillance and Monitoring Program for beaches permitted by the Department of Health and Mental Hygiene (DOHMH or the “Department”). This law requires that the Health Commissioner “forward a combined report of the dates and results of all inspections of all beaches and the dates and reasons for any warning advisory or closure, and such other information deemed appropriate by the Commissioner of Health and Mental Hygiene, for the Friday proceeding the last Monday of May until the Friday after the first Monday of September of each year, to the mayor, the public advocate and the speaker of the council.”

With the principal goal of protecting ocean beachgoers from potential health and safety hazards, the Department closely monitors and conducts surveillance of permitted beaches in New York City. Under the regulatory directive and authority of both Article 167 of the New York City Health Code (Article 167) and Subpart 6-2 of the New York State Sanitary Code (Subpart 6-2), the Department administers the Beach Surveillance and Monitoring Program for all beaches operating within the city limits and with a permit issued by the Department. The Program responsibilities include: 1) beach monitoring and surveillance 2) public notification and communication, and 3) safety inspections.

The city’s beaches function as an important recreational resource for city residents and neighboring communities. As shown in Figure 1 (page 2) and Table 1 (page 3), there are eight public beaches operated by the Department of Parks and Recreations (the Parks Department) and 17 privately operated beaches permitted within New York City limits.

This year, New York City Parks Department public beaches remained open an additional week – until September 9th – for the 2018 beach season to coincide with the school calendar.

FIGURE 1: NEW YORK CITY PERMITTED BEACHES



 = Public Beach (NYC Dept. Parks and Recreation)

TABLE 1: NEW YORK CITY PERMITTED BEACHES AND WATER BODY IDENTIFICATION

Borough	Beaches	Water Body
Brooklyn	<i>Public:</i> Coney Island, Manhattan <i>Private:</i> Seagate, Kiddie Gerritsen, Kingsborough	Lower New York Harbor
Bronx	<i>Public:</i> Orchard Beach <i>Private:</i> American Turner, Danish American, Manhem, White Cross Fishing, Morris Yacht Club, Schuyler Hill, Trinity Danish, Locust Point Yacht Club, West Fordham Street	Eastchester Bay, Western Long Island Sound
Queens	<i>Public:</i> Rockaway <i>Private:</i> Breezy Point	Atlantic Ocean
	<i>Private:</i> Douglaston Manor, Whitestone Booster Civic Association	Western Long Island Sound
Staten Island	<i>Public:</i> South Beach, Midland, Cedar Grove, Wolfe’s Pond Park <i>Private:</i> Staten Island YMCA	Lower New York Bay

1.1 Public Risk Communication

The Department continued its effort to improve public notification and risk communication during the 2018 beach season. Easy-to-interpret signs shown in Figure 2 were in continuous use for beach closures and warnings in 2018.

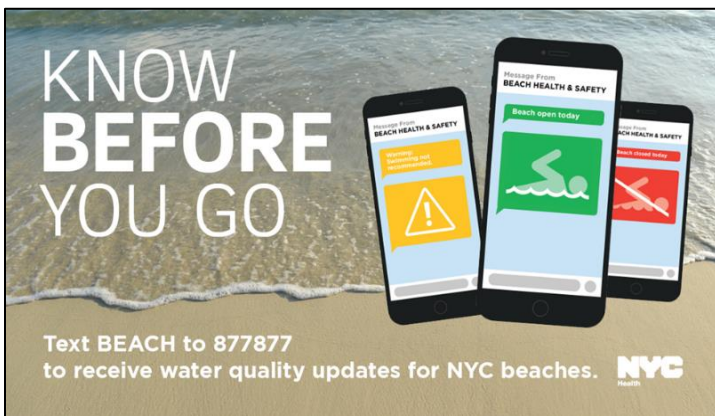
FIGURE 2: BEACH WARNING AND CLOSED SIGNS



“Know Before You Go”, a free texting service introduced in 2014, was continued for the 2018 beach season. The service enables subscribers to make informed decisions before they go to a public beach by checking if the beach is open or closed or if there are any warnings due to wet weather conditions or water quality concerns. Subscribers simply text “BEACH” to 877-877 to learn the status of any of the eight public beaches in New York City. This tool also can be used by the Department to deliver notifications of high priority water quality warnings or closures as well as safety related messages such as warnings for high rip currents, closures for extreme weather and when beaches open and close for the season.

In 2018, the Department’s outreach strategy included promotional posts on its social media platforms (Twitter and Facebook), examples of which are shown in Figure 3. At the beginning of the season, the texting service had 10,041 English-language subscribers and 439 Spanish-language subscribers. By the close of the beach season, there were 11,752 English-language subscribers (15% increase) and 559 Spanish-language subscribers (21% increase).

FIGURE 3: KNOW BEFORE YOU GO TEXTING PROGRAM



SECTION 2

BACKGROUND INFORMATION

This chapter provides background information on the New York City Beach Surveillance and Monitoring Program. The topics of discussion include: bacteriological water quality criteria; pre-emptive rainfall thresholds; beach classifications; monitoring and surveillance; public notification and risk communication; and safety inspections.

2.1 Water Quality Criteria

Under the New York State Sanitary Code §6-2.15, Article §167.13 of the New York City Health Code and the Federal Beaches Environmental Assessment and Coastal Health Act of 2000 (BEACH) Act, enterococcus is the indicator organism mandated for evaluating the microbiological quality of marine (saline) recreational beach water.

Under the New York State Sanitary Code and the New York City Health Code, enterococci concentrations for a single sample shall not exceed 104 Colony Forming Units (CFU's) per 100 mL (61 CFU's per 100 ml for fresh water), and the enterococci geometric mean shall not exceed 35 CFU's per 100 mL (33 CFU's per 100 ml for fresh water) for a series of five or more samples collected during a 30-day period. The geometric mean and single sample maximum is determined by analyzing samples for the presence and quantification of enterococci using EPA method 1600.

In November 2012, the Environmental Protection Agency (EPA) released revised recreational water quality criteria (RWQC). The revised criteria use a geometric mean and a statistical threshold value to indicate whether waters designated for primary contact recreation use are protective of human health. The 2012 revised criteria for marine waters are a 30-day geometric mean of 30 enterococci (CFU/100 mL) and a statistical threshold value of 110 enterococci (CFU/100 mL); the statistical threshold value is calculated as no more than 10% of samples within 30 days shall exceed the criteria. The EPA also introduced a Beach Action Value (BAV) of 60 enterococci (CFU/100 mL) to be used as a notification threshold for beach management, replacing earlier guidance that provided single sample maximum values. Revised water quality criteria have been proposed at the State level by the New York Department of Environmental Conservation (DEC), and recreational standards are subsequently scheduled to be proposed by the New York State Department of Health (NYSDOH), to be implemented by local beach programs in future seasons.

2.2 Rainfall Events

Pre-emptive rainfall thresholds have been developed for New York City beaches through statistical modeling of historical precipitation and water quality data. These preemptive thresholds are used as a management tool to provide a quick and reliable indication of water

quality conditions. Because the majority of the city has combined stormwater and sewer conveyance systems, high levels of precipitation may result in combined sewage and stormwater runoff bypassing the treatment system and overflowing into local waterbodies. This phenomenon, known as Combined Sewer Overflow (CSO), poses a public health threat to nearby beaches. When preemptive rainfall thresholds are met, as defined in Table 2, a public notification or warning takes effect for the predetermined duration.

TABLE 2: NEW YORK CITY PRE-EMPTIVE RAINFALL THRESHOLDS

Beach (Borough)	Rainfall Threshold (within 24 hrs)	Duration of Warning
South Beach, Midland Beach, Cedar Grove, Staten Island YMCA (Staten Island), Manhattan Beach, Kingsborough Community College (Brooklyn)	1.5 – 2.5 inches	12 hours
	> 2.5 inches	24 hours
Orchard Beach (Brooklyn)	> 2.5 inches	24 hours
Coney Island (Brooklyn)	> 2.5 inches	12 hours
Gerritsen/Kiddie Beach (Brooklyn) Whitestone Booster (Queens)	0.3 - 0.6 inches	18 hours
	> 0.6 inches	40 hours
American Turner, Danish American , Manhem, White Cross, Morris Yacht, Schuyler Hill, Trinity Danish, Locust Point Yacht Club, West Fordham Street Association (Bronx)	0.6 – 2.5 inches	36 hours
	> 2.5 inches	48 hours
Douglaston Manor (Queens)	0.3 – 0.6 inches	30 hours
	> 0.6 – 2.5 inches	60 hours
	> 2.5 inches	72 hours

2.3 Beach Classifications

There are three swimming classifications for New York City beaches which are determined by assessing water quality, rainfall and pollution events, on-site sanitary surveys, and/or historical information. Beaches, except those specifically restricted under Article §167.05, are classified as follows:

Class A: Open for Swimming and Wading. Beaches may be classified as open and approved for swimming and wading when *all* of the following conditions are met:

1. Beach water quality is in accordance with standards defined under Article §167.13;
2. Sanitary and safety surveys are satisfactory in accordance with Article §167.25; and

3. The epidemiological history is satisfactory to the Department, i.e., no repeated complaints or reports of illness/injury received from the public or from owners/operators of city beaches.

Class B: Warning – Not Recommended for Swimming and Wading. Beaches may be classified as “Not Recommended for Swimming and Wading,” resulting in notifications to the public that swimming should be avoided to prevent contracting a swimming-related illness, when *one or more* of the following conditions exists:

1. Rainfall events exceed the pre-emptive rainfall thresholds; and/or
2. A water quality sample exceeds the water quality standard or a beach notification threshold. The notification should remain in effect until resampling indicates that the beach water quality standard and/or notification thresholds are being met; and/or
3. An on-site sanitary survey or investigation reveals the presence of floatable debris, medical/infectious waste or toxic contaminants, petroleum products and/or other contamination on the beach; or evidence of sewage and wastewater discharge.

Class C: Closed – Temporarily Restricted for Swimming and Wading: Beaches may be classified as “Temporarily Restricted for Swimming and Wading” when *one or more* of the following conditions exists:

1. Sampling by bacteriological testing that finds beach water quality exceeding the statutory water quality standard for marine water beaches; and/or
2. Epidemiological data indicates a significant incidence of related illnesses or repeated complaints/reports of illness/injury received from beach patrons; and/or
3. A sanitary and safety survey or an investigation reveals the presence of potentially hazardous amounts of floatable debris, medical/infectious waste, toxic contaminants, petroleum products or other contaminants on the beach, or there is evidence of sewage and wastewater discharges in sufficient quantities that will adversely affect the quality of the beach water; and/or
4. Any other environmental factors determined to be a public health or safety hazard by the Department.

2.4 Beach Monitoring and Surveillance

Starting one month before the beach season, the Department monitors and samples each beach on a weekly basis with the exception of the Rockaway and Breezy Point beaches, which are sampled bi-weekly. In addition to routine water quality monitoring, the Department monitors on a daily basis the regional wet weather conditions and occasional Waste Water Treatment Plant (WWTP) bypasses, operational upsets and spills through interagency communication and cooperation. This information can be used to assess and make beach status determinations.

During a sample event, a routine on-site sanitary survey inspection is performed to identify any existing and/or potential sources of pollution that are likely to affect beach water quality. Water samples are collected at knee-depth (18 inches) in three feet of water, from the center left and right of the beach. At larger beaches, such as Coney Island and Rockaway, samples are taken from multiple locations to ensure adequate representation and reliable results. The collected samples are delivered to the Department's Public Health Laboratory for analysis. The analytical turnaround time for enterococci is 24 hours.

The water quality of the samples analyzed is reviewed and assessed for conformance to applicable standards. If the regulatory limit for enterococci is exceeded or conditions exist that may pose a threat to the health and/or safety of the public, the Department initiates one of the following actions: conducts immediate re-sampling; issues a warning and conducts re-sampling; and/or closes the beach and conducts re-sampling. The determining factors for additional sampling may include: proximity to suspected pollution sources; extent of pollution; beach use; historical water quality data; and other health risk factors.

2.5 Public Notification and Risk Communication

When beach status changes based upon evaluation and assessment of beach water quality as specified above, the Department notifies the public through on-site beach signage, website postings, 311 non-emergency government service hotline, Notify NYC (via Twitter, RSS feed, e-mail, and SMS), "Know Before You Go" texting service, and Department press releases when necessary. Beach operators are notified by phone, email and/or text as to the necessary on-site postings. The specific notification procedures and requirements for each of the above conditions are as follows:

On-Site Signage: When notified by the Department, the permittee is required to post or remove the warning or closure signs in designated areas visible to beach users such as beach entrances, bulletin boards, comfort stations or the general vicinity of the common swimming areas.

"Know Before You Go" Texting Service: Subscribers text "BEACH" to 877-877 to learn the beach status for any of the eight public beaches in New York City.

Website Postings: The Department has developed an easily accessible website with up-to-date information for all permitted beaches: www.nyc.gov/health/beach. The website contains background information on the beach program, explains the causes and sources of surface water pollution, and summarizes the beach classification system, including the different types of warnings. A list of city beaches by borough, along with their respective status (Open, Closed, or Warning) and sample results are promptly updated on the website.

Notify NYC: When notified by the Department of status changes relating to public beaches, the Office of Emergency Management will share this information with members of the public who have signed up for Notify NYC status information via Twitter, RSS feed, e-mail and SMS.

311: The 311 telephone operators monitor the Department’s website for updates on warning or closure information, as described above, and convey that information to 311 callers. The public can also report a swimming-related illness via 311.

NYC Press Release: Press releases are disseminated to various types of media (newspaper, radio, website, television), as well as elected officials.

2.6 Inspections

The Department conducts annual safety inspections and complaint inspections at bathing beaches to assure that (1) all staff, especially lifeguards and supervisors, have proper certificates and coverage, including CPR certification; (2) all required life-saving equipment is available, including rescue tubes, spine boards, first aid kits, and resuscitation equipment; (3) there is proper signage posted on site. Direct observations of conditions are supplemented by interviews with lifeguards and other personnel. The inspections also evaluate beach facility hygiene.

SECTION 3

FINDINGS

3.1 Water Quality and Illness Reporting

Routine water quality monitoring and sample collection was performed at all 25 permitted beaches. Over 1500 samples were collected and analyzed from these beaches between April and September 2018. There were no beach-related recreational water illnesses or complaints reported to the Department during the season.

Water quality sample results, including 30-day geometric mean and daily averages and exceedances of the single-sample maximum can be found in Appendix A (pages 12 to 18). Warnings and closures issued by the Department throughout the season are summarized in Appendix B (pages 18 to 22).

For private beaches, Gerritsen/Kiddie had the highest exceedance rate (16.7%), while Breezy Point 219, American Turner, Danish American, Locust Point, Schuyler Hill, Sea Gate Beach Club, and Trinity Danish had no exceedances.

For public beaches, Cedar Grove Beach in Staten Island had the highest exceedance rate for all public beaches (16.7%), while Orchard Beach and Wolfe's Pond Beach had no exceedances.

These exceedances may be due, in part, to particular precipitation and temperature patterns this year, which are consistent with recent increases in the summer heat index, as well as increases in total precipitation in the Northeast United States. According to the National Oceanic and Atmospheric Administration's National Climate Report (NOAA, 2018), average temperatures and precipitation in the lower regions of New York State were much above average and at record highs from June to August 2018.

3.2 Public Notification for Warnings and Closures

There are 17 private beaches, of which 12 were issued at least one swimming advisory warning notice during the 2018 bathing season. Of the private beaches that exceeded water quality standards, there were 306 warning days (232 of which were a result of wet weather conditions). The length of the notifications ranged from 1 to 14 days, most of which ranged between 1 and 3 days. Of the public beaches that exceeded water quality standards, there were 49 warning days and 1 closure day (none of which were a result of wet weather conditions). The length of notification ranged from 1 to 14 days. Cedar Grove and South Beach had 25 and 23 notification

days respectively. The specific warning dates for each beach are shown in Appendix B (pages 18 to 22).

3.3 Inspections

During the 2018 beach season, 25 inspections of public and private beaches were conducted by the Department at 23 permitted facilities. Three facilities were cited for a general violation at the time of inspection as detailed in Appendix C (page 23).

APPENDIX A: 2018 WATER QUALITY RESULTS AND EXCEEDANCE

Table A1-1: Brooklyn Beaches Water Quality Results

Enterococci 30 Day Geometric Mean/Daily Average (Count/100ml)

Water Quality Standards: 30 day geomean limit: 35cfu/100ml, Daily average limit: 104cfu/100ml

Date of Week Ending	CONEY ISLAND BEACH (public)		MANHATTAN BEACH (public)		GERRITSEN/ KIDDIE BEACH (private)		KINGSBOROUGH COMMUNITY COLLEGE (private)		SEA GATE 42 ND (private)		SEA GATE BEACH CLUB (private)	
	30 Day	Daily	30 Day	Daily	30 Day	Daily	30 Day	Daily	30 Day	Daily	30 Day	Daily
5/26/2018	6	5	10	24	22	95	9	19	5	5	5	7
6/2/2018	7	9	10	4	28	15	9	7	5	7	4	4
6/9/2018	6	4	18	79	43	127	12	21	7	15	7	45
6/16/2018	5	5	16	8	72	59	12	7	7	4	7	4
6/23/2018	5	5	12	5	32	4	9	5	6	4	7	4
6/30/2018	6	11	12	21	24	20	10	23	5	4	6	4
7/7/2018	5	5	12	5	21	9	9	4	5	4	6	4
7/14/2018	6	11	7	4	13	11	6	4	4	4	4	4
7/21/2018	6	7	8	20	11	21	9	57	5	17	4	4
7/28/2018	11	17	13	69	25	520	11	12	7	17	5	9
8/4/2018	10	37	10	7	27	31	8	5	12	73	6	20
8/11/2018	11	12	10	4	23	4	8	4	16	23	6	4
8/18/2018	10	4	16	52	31	43	13	36	30	93	7	15
8/25/2018	10	5	15	12	23	5	8	4	25	7	10	27
9/1/2018	6	5	12	20	10	4	10	41	18	4	9	4
9/8/2018	5	6	13	12	7	5	11	16	12	7	8	8

Values highlighted in red indicate exceedance of recreational water quality criteria

Table A1-2: Bronx Beaches Water Quality Results

Enterococci 30 Day Geometric Mean/Daily Average (Count/100ml)

Water Quality Standards: 30 day geomean limit: 35cfu/100ml, Daily average limit: 104cfu/100ml

Date of Week Ending	ORCHARD BEACH (public)		AMERICAN TURNER (private)		DANISH AMERICAN BEACH CLUB (private)		LOCUST POINT YACHT CLUB (private)		MANHEM CLUB (private)		MORRIS YACHT AND BEACH CLUB (private)		SCHUYLER HILL CIVIC ASSOC. (private)		TRINITY DANISH (private)		WEST FORDHAM STREET ASSOC. (private)		WHITE CROSS FISHING CLUB (private)	
	30 Day	Daily	30 Day	Daily	30 Day	Daily	30 Day	Daily	30 Day	Daily	30 Day	Daily	30 Day	Daily	30 Day	Daily	30 Day	Daily	30 Day	Daily
5/26/2018	4	4	7	5	6	8	7	12	6	11	5	7	5	4	6	4	5	7	6	5
6/2/2018	5	13	8	16	5	4	7	9	5	4	6	17	7	24	6	21	5	4	7	29
6/9/2018	5	4	8	4	5	5	7	4	6	12	6	4	6	4	8	12	8	44	7	4
6/16/2018	5	4	10	20	6	15	7	4	6	4	6	7	7	7	8	5	10	15	8	16
6/23/2018	5	4	7	4	7	19	5	4	7	15	6	4	6	4	9	12	8	4	8	8
6/30/2018	7	20	10	23	9	21	5	5	9	37	6	5	6	4	10	11	8	4	10	16
7/7/2018	5	4	7	4	9	4	5	7	9	4	7	63	4	4	8	5	8	4	7	4
7/14/2018	5	4	7	4	8	4	5	5	8	5	7	5	5	13	6	4	8	82	7	7
7/21/2018	6	5	6	5	8	9	5	5	8	5	7	4	5	7	7	9	7	4	8	17
7/28/2018	6	7	7	8	9	40	6	15	8	11	8	12	5	7	9	47	7	8	12	131
8/4/2018	4	4	6	17	8	9	6	4	5	4	8	4	5	4	10	12	7	4	11	11
8/11/2018	5	9	9	35	9	7	6	7	6	9	7	20	7	19	10	5	8	8	20	91
8/18/2018	6	8	13	21	10	8	6	4	6	7	7	5	8	16	13	20	7	27	27	25
8/25/2018	6	8	17	17	10	8	6	9	7	39	7	4	8	4	14	13	8	13	26	17
9/1/2018	6	4	16	5	6	4	5	4	6	5	5	4	7	4	9	5	7	4	15	4
9/8/2018	6	4	12	7	5	4	5	4	6	4	6	7	7	4	7	4	8	7	13	4
9/15/2018											8	87					9	13		
9/22/2018																	6	4		

Values highlighted in red indicate exceedance of recreational water quality criteria

Table A1-3: Queens Beaches Water Quality Results

Enterococci 30 Day Geometric Mean/Daily Average (Count/100ml)

Water Quality Standards- 30 day geomean limit: 35cfu/100ml, Daily Average limit: 104cfu/100ml

Date of Week Ending	ROCKAWAY BEACH* (public)		BREEZY POINT 219 (private)		BREEZY POINT Reid Ave (private)		WHITESTONE BOOSTER CIVIC ASSOCIATION (private)		DOUGLSTON MANOR ASSOCIATION (private)	
	30 Day	Daily	30 Day	Daily	30 Day	Daily	30 Day	Daily	30 Day	Daily
5/26/2018	4	5	4	4	13	130	4	4	17	431
6/2/2018							6	35	39	307
6/9/2018	4	4	4	4	13	4	6	7	28	13
6/16/2018							8	16	35	27
6/23/2018	4	4	4	4	13	4	10	11	57	101
6/30/2018							12	15	32	5
7/7/2018 *	4	4	4	4	4	4	11	17	14	7
7/14/2018							16	144	12	5
7/21/2018	4	5	5	8	4	4	15	8	10	7
7/28/2018							15	13	8	31
8/4/2018	4	5	5	4	4	4	12	5	8	9
8/11/2018							10	7	11	27
8/18/2018	5	7	5	4	4	4	9	27	12	8
8/25/2018							9	11	11	4
9/1/2018	7	14	10	68	4	4	7	4	7	4
9/8/2018							8	15	6	4
9/15/2018									10	293
9/22/2018									10	5

* mid-week sample result on 7/7/2018 at Rockaway Beaches resulted in water quality concern, see appendix B for description.

Values highlighted in red indicate exceedance of recreational water quality criteria

Table A1-4: Staten Island Beaches Water Quality Results

Enterococci 30 Day Geometric Mean/Daily Average (Count/100ml)

Water Quality Standards- 30 day Geomean limit: 35cfu/100ml, Daily Average limit: 104cfu/100ml

Fresh Water Standards- 30 day Geomean limit: 33cfu/100ml, Daily Average limit: 61cfu/100ml

Date of Week Ending	SOUTH BEACH (public)		MIDLAND BEACH (public)		CEDAR GROVE BEACH (public)		WOLFE'S POND BEACH (public)	
	30 Day	Daily	30 Day	Daily	30 Day	Daily	30 Day	Daily
5/26/2018	7	15	6	4	12	4	8	5
6/2/2018	7	5	6	4	13	9	8	4
6/9/2018*	12	40	8	19	20	8	12	39
6/16/2018*	15	37	7	4	26	7	9	4
6/23/2018	10	4	5	4	12	4	6	4
6/30/2018	11	13	7	15	12	4	6	4
7/7/2018	11	7	7	4	11	4	6	5
7/14/2018	8	8	5	4	7	4	4	4
7/21/2018	6	5	5	5	5	15	4	5
7/28/2018**	34	873	8	33	19	283	7	61
8/4/2018	34	12	6	4	30	74	7	4
8/11/2018***	34	23	6	4	34	12	7	4
8/18/2018****	45	44	11	11	48	31	11	31
8/25/2018*****	25	4	12	7	47	88	10	4
9/1/2018	13	4	8	4	17	4	6	4
9/8/2018	12	8	8	4	11	4	6	4

*mid-week sample on result 6/9/18 & 6/16/18 at Cedar Grove Beach resulted in a water quality exceedance, see appendix B for description.

**mid-week sample on result 7/28/18 at Cedar Grove & South Beaches resulted in a water quality exceedance, see appendix B for description.

***mid-week sample on result 8/11/18 at South Beach resulted in a water quality exceedance, see appendix B for description.

****mid-week sample on result 8/18/18 at Midland Beach resulted in a water quality exceedance, see appendix B for description.

*****mid-week sample on result 8/25/18 at South Beach resulted in a water quality exceedance, see appendix B for description.

Values highlighted in red indicate exceedance of recreational water quality criteria

Table A2-1: 2018 Summary of Beach Samples and Single-Sample Exceedances

Beach	Sample Location	Total # of Samples	# of Sample exceed 104	% of Sample exceed 104
ALL Beaches TOTAL		1525	55	3.6%
Public Beaches TOTAL		590	25	4.2%
Private Beaches TOTAL		935	30	3.2%

Table A2-2: 2018 Public Beaches Samples and Single-Sample Exceedances

Beach	Sample Location		Total # of Samples	# of Sample exceed 104	% of Sample exceed 104 (Location)	% of Sample exceed 104 (Beach)
CEDAR GROVE	CEDAR GROVE	Left	24	5	20.8%	16.7%
	CEDAR GROVE	Center	24	2	8.3%	
	CEDAR GROVE	Right	24	5	10.8%	
CONEY ISLAND	CONEY ISLAND BR. 15TH - 6TH	Center	20	0	0.0%	0.8%
	CONEY ISLAND BR. 6TH - OCEAN PKWY	Center	20	0	0.0%	
	CONEY ISLAND OCEAN PKWY - WEST 8TH	Center	20	0	0.0%	
	CONEY ISLAND WEST 8TH - PIER	Center	20	0	0.0%	
	CONEY ISLAND WEST 16TH - WEST 27TH	Center	20	0	0.0%	
	CONEY ISLAND WEST 28TH - WEST 37TH	Center	20	1	5.0%	
MANHATTAN BEACH	MANHATTAN BEACH	Left	20	0	0.0%	1.7%
	MANHATTAN BEACH	Center	20	1	5.0%	
	MANHATTAN BEACH	Right	20	0	0.0%	
MIDLAND BEACH	MIDLAND BEACH	Left	21	1	4.8%	1.6%
	MIDLAND BEACH	Center	21	0	0.0%	
	MIDLAND BEACH	Right	21	0	0.0%	
ORCHARD BEACH	ORCHARD BEACH	Left	20	0	0.0%	0.0%
	ORCHARD BEACH	Center	20	0	0.0%	
	ORCHARD BEACH	Right	20	0	0.0%	
ROCKAWAY BEACH	ROCKAWAY BEACH 9TH - 13TH	Center	10	1	10.0%	3.6%
	ROCKAWAY BEACH 15TH - 22TH	Center	10	0	0.0%	
	ROCKAWAY BEACH 23RD - 59TH	Center	10	1	10.0%	
	ROCKAWAY BEACH 59TH - 80TH	Center	10	0	0.0%	
	ROCKAWAY BEACH 80TH - 95TH	Center	10	0	0.0%	
	ROCKAWAY BEACH 95TH - 116TH	Center	11	1	9.1%	
	ROCKAWAY BEACH 116TH - 126TH	Center	11	0	0.0%	
	ROCKAWAY BEACH 126TH - 149TH	Center	11	0	0.0%	
SOUTH BEACH	SOUTH BEACH	Left	24	2	8.3%	9.7%
	SOUTH BEACH	Center	24	3	12.5%	
	SOUTH BEACH	Right	24	2	8.3%	
WOLFE'S POND BEACH	WOLFE'S POND BEACH	Left	20	0	0.0%	0.0%
	WOLFE'S POND BEACH	Center	20	0	0.0%	
	WOLFE'S POND BEACH	Right	20	0	0.08%	
Public Beaches (Locations) Total			590	25	4.2%	

Table A2-3: 2018 Private Beaches Samples and Single-Sample Exceedances

Beach	Sample Location		Total # of Samples	# of Sample exceed 104	% of Sample exceed 104 (Location)	% of Sample exceed 104 (Beach)
AMERICAN TURNER	AMERICAN TURNER	Left	20	0	0.0%	0.0%
	AMERICAN TURNER	Center	20	0	0.0%	
	AMERICAN TURNER	Right	20	0	0.0%	
BREEZY POINT 219	BREEZY POINT 219	Center	10	0	0.0%	0.0%
BREEZY POINT Reid	BREEZY POINT Reid Ave	Center	10	1	10.0%	10.0%
DANISH AMERICAN BEACH CLUB	DANISH AMERICAN BEACH CLUB	Left	20	0	0.0%	0.0%
	DANISH AMERICAN BEACH CLUB	Center	20	0	0.0%	
	DANISH AMERICAN BEACH CLUB	Right	20	0	0.0%	
DOUGLSTON MANOR ASSOCIATION	DOUGLSTON MANOR ASSOCIATION	Left	22	4	18.20%	13.6%
	DOUGLSTON MANOR ASSOCIATION	Center	22	3	13.6%	
	DOUGLSTON MANOR ASSOCIATION	Right	22	2	9.1%	
GERRITSEN/KIDDIE BEACH	GERRITSEN/KIDDIE BEACH	Left	20	4	20.0%	16.7%
	GERRITSEN/KIDDIE BEACH	Center	20	3	15.0%	
	GERRITSEN/KIDDIE BEACH	Right	20	3	15.0%	
KINGSBOROUGH COMMUNITY COLLEGE	KINGSBOROUGH COMMUNITY COLLEGE	Left	20	0	00%	1.7%
	KINGSBOROUGH COMMUNITY COLLEGE	Center	20	1	5.0%	
	KINGSBOROUGH COMMUNITY COLLEGE	Right	20	0	0.0%	
LOCUST POINT YACHT CLUB	LOCUST POINT YACHT CLUB	Left	21	0	0.0%	0.0%
	LOCUST POINT YACHT CLUB	Center	21	0	0.0%	
	LOCUST POINT YACHT CLUB	Right	21	0	0.0%	
MANHEM CLUB	MANHEM CLUB	Left	20	0	0.0%	1.7%
	MANHEM CLUB	Center	20	0	0.0%	
	MANHEM CLUB	Right	20	1	5.0%	
MORRIS YACHT AND BEACH CLUB	MORRIS YACHT AND BEACH CLUB	Left	21	0	0.0%	3.2%
	MORRIS YACHT AND BEACH CLUB	Center	21	1	4.8%	
	MORRIS YACHT AND BEACH CLUB	Right	21	1	4.8%	
SCHUYLER HILL CIVIC ASSOCIATION	SCHUYLER HILL CIVIC ASSOCIATION	Left	20	0	0.0%	0.0%
	SCHUYLER HILL CIVIC ASSOCIATION	Center	20	0	0.0%	
	SCHUYLER HILL CIVIC ASSOCIATION	Right	20	0	0.0%	
SEA GATE 42ND	SEA GATE 42ND	Left	20	1	5.0%	3.3%
	SEA GATE 42ND	Center	20	1	5.0%	
	SEA GATE 42ND	Right	20	0	0.0%	
SEA GATE BEACH CLUB	SEA GATE BEACH CLUB	Left	20	0	0.0%	0.0%
	SEA GATE BEACH CLUB	Center	20	0	0.0%	
	SEA GATE BEACH CLUB	Right	20	0	0.0%	
TRINITY DANISH	TRINITY DANISH	Left	19	0	0.0%	0.0%
	TRINITY DANISH	Center	19	0	0.0%	
	TRINITY DANISH	Right	19	0	0.0%	
WEST FORDHAM STREET ASSOCIATION	WEST FORDHAM STREET ASSOCIATION	Left	20	0	0.0%	1.5%
	WEST FORDHAM STREET ASSOCIATION	Center	20	0	0.0%	
	WEST FORDHAM STREET ASSOCIATION	Right	20	1	4.5%	
WHITE CROSS FISHING CLUB	WHITE CROSS FISHING CLUB	Left	19	2	10.0%	3.3%
	WHITE CROSS FISHING CLUB	Center	19	0	0.0%	
	WHITE CROSS FISHING CLUB	Right	19	0	0.0%	
WHITESTONE BOOSTER CIVIC ASSOCIATION	WHITESTONE BOOSTER CIVIC ASSOCIATION	Left	20	0	0.0%	1.7%
	WHITESTONE BOOSTER CIVIC ASSOCIATION	Center	20	1	5.0%	
	WHITESTONE BOOSTER CIVIC ASSOCIATION	Right	20	0	0.0%	
Private Beaches (Locations) Total			935	30	3.2%	

Table A2-3: 2018 Private Freshwater Beach Samples and Single-Sample Exceedances

Beach	Sample Location		Total # of Samples	# of Sample exceed 61	% of Sample exceed 61 (Location)	% of Sample exceed 61 (Beach)
Staten Island YMCA	Staten Island YMCA	Left	20	2	10.0%	15.0%
	Staten Island YMCA	Center	20	3	15.0%	
	Staten Island YMCA	Right	20	4	20.0%	
Private Freshwater Beaches (Locations) Total			60	9	15.0%	

APPENDIX B: 2018 WARNINGS AND CLOSURES

Table B-1: Summary of Beach Warnings and Closure

Beach	Types	Reason	Start Date	End Date	Beach Days	# of Beach-Specific Days	Notification (Beach Specific Days)		
							Warning	Closure	Total
NYC ALL Beaches (N=25)	Warning or Closure	Enterococci Exceedance or Rainfall Event	5/26/18	9/9/18	2319	356	355	1	356

Table B-2 Public Beaches Warnings and Closures

Beach	Types	Reason	Start Date	End Date	Beach Days	# of Beach-Specific Days	Notification (Beach Specific Days)		
							Warning	Closure	Total
CEDAR GROVE	Warning	Enterococci Exceedance	6/6/18	6/7/18	82	2	25	0	25
	Warning	Enterococci Exceedance	6/13/18	6/14/18		2			
	Warning	Enterococci Exceedance	7/25/18	7/31/18		7			
	Warning	Enterococci Exceedance	8/15/18	8/28/18		14			
CONEY ISLAND					107	0	0	0	0
MANHATTAN BEACH					107	0	0	0	0
MIDLAND BEACH	Warning	Enterococci Exceedance	8/15/18	8/16/18	105	2	2	0	2
ROCKAWAY BEACH					107	0	0	0	0
ORCHARD BEACH					107	0	0	0	0
SOUTH BEACH	Warning	Enterococci Exceedance	7/25/18	7/31/18	84	7	22	1	23
	Warning	Enterococci Exceedance	8/8/18	8/9/18		2			
	Closure	Enterococci Exceedance	8/15/18	8/23/18		9			
	Warning	Enterococci Exceedance	8/24/18	8/24/18		1			
	Warning	Enterococci Exceedance	8/25/18	8/28/18		4			
WOLFE'S POND PARK					107	0	0	0	0
Public Beaches TOTAL					806	50	49	1	50

Table B-3 Private Beaches Warnings and Closures

Beach	Types	Reason	Start Date	End Date	Beach Days	# of Beach-Specific Days	Notification (Beach Specific Days)		
							Warning	Closure	Total
AMERICAN TURNERS	Warning	Rainfall Event	6/4/18	6/5/18	88	2	19	0	19
	Warning	Rainfall Event	6/21/18	6/22/18		2			
	Warning	Rainfall Event	6/28/18	6/29/18		2			
	Warning	Rainfall Event	7/15/18	7/16/18		2			
	Warning	Rainfall Event	7/18/18	7/18/18		1			
	Warning	Rainfall Event	7/22/18	7/23/18		2			
	Warning	Rainfall Event	7/25/18	7/26/18		2			
	Warning	Rainfall Event	8/4/18	8/5/18		2			
	Warning	Rainfall Event	8/11/18	8/12/18		2			
	Warning	Rainfall Event	8/14/18	8/14/18		1			
	Warning	Rainfall Event	8/18/18	8/18/18		1			
BREEZY POINT 219					107	0	0	0	0
BREEZY POINT REID	Warning	Enterococci Exceedance	5/26/18	6/7/18	94	13	13	0	13
DANISH AMERICAN BEACH CLUB	Warning	Rainfall Event	6/4/18	6/5/18	88	2	19	0	19
	Warning	Rainfall Event	6/21/18	6/22/18		2			
	Warning	Rainfall Event	6/28/18	6/29/18		2			
	Warning	Rainfall Event	7/15/18	7/16/18		2			
	Warning	Rainfall Event	7/18/18	7/18/18		1			
	Warning	Rainfall Event	7/22/18	7/23/18		2			
	Warning	Rainfall Event	7/25/18	7/26/18		2			
	Warning	Rainfall Event	8/4/18	8/5/18		2			
	Warning	Rainfall Event	8/11/18	8/12/18		2			
	Warning	Rainfall Event	8/14/18	8/14/18		1			
	Warning	Rainfall Event	8/18/18	8/18/18		1			
DOUGLASTON HOMEOWNERS ASSOCIATION	Warning	Enterococci Exceedance	5/26/18	6/6/18	54	12	53	0	53
	Warning	Enterococci Exceedance	6/14/18	6/27/18		14			
	Warning	Rainfall Event	6/28/18	6/30/18		3			
	Warning	Rainfall Event	7/12/18	7/12/18		1			
	Warning	Rainfall Event	7/15/18	7/17/18		3			
	Warning	Rainfall Event	7/18/18	7/19/18		2			
	Warning	Rainfall Event	7/22/18	7/24/18		3			
	Warning	Rainfall Event	7/25/18	7/27/18		3			
	Warning	Rainfall Event	8/4/18	8/6/18		3			
	Warning	Rainfall Event	8/11/18	8/15/18		5			
	Warning	Rainfall Event	8/18/18	8/20/18		3			
	Warning	Rainfall Event	8/22/18	8/22/18		1			

Table B-3 Private Beaches Warnings and Closures (continued)

Beach	Types	Reason	Start Date	End Date	Beach Days	# of Beach-Specific Days	Notification (Beach Specific Days)		
							Warning	Closure	Total
GERRITSEN/KID DIE BEACH	Warning	Rainfall Event	5/27/18	5/28/18	71	2	36	0	36
	Warning	Rainfall Event	6/4/18	6/5/18		2			
	Warning	Enterococci Exceedance	6/6/18	6/19/18		14			
	Warning	Rainfall Event	6/28/18	6/29/18		2			
	Warning	Rainfall Event	7/15/18	7/16/18		2			
	Warning	Rainfall Event	7/18/18	7/18/18		1			
	Warning	Rainfall Event	7/22/18	7/24/18		3			
	Warning	Enterococci Exceedance	7/25/18	7/31/18		7			
	Warning	Rainfall Event	8/8/18	8/8/18		1			
	Warning	Rainfall Event	8/13/18	8/13/18		1			
	Warning	Rainfall Event	9/7/18	9/7/18		1			
KINGSBOROUGH COMMUNITY COLLEGE					107	0	0	0	
LOCUST POINT YACHT CLUB	Warning	Rainfall Event	6/4/18	6/5/18	88	2	19	0	19
	Warning	Rainfall Event	6/21/18	6/22/18		2			
	Warning	Rainfall Event	6/28/18	6/29/18		2			
	Warning	Rainfall Event	7/15/18	7/16/18		2			
	Warning	Rainfall Event	7/18/18	7/18/18		1			
	Warning	Rainfall Event	7/22/18	7/23/18		2			
	Warning	Rainfall Event	7/25/18	7/26/18		2			
	Warning	Rainfall Event	8/4/18	8/5/18		2			
	Warning	Rainfall Event	8/11/18	8/12/18		2			
	Warning	Rainfall Event	8/14/18	8/14/18		1			
	Warning	Rainfall Event	8/18/18	8/18/18		1			
MANHEM BEACH CLUB	Warning	Rainfall Event	6/4/18	6/5/18	88	2	19	0	19
	Warning	Rainfall Event	6/21/18	6/22/18		2			
	Warning	Rainfall Event	6/28/18	6/29/18		2			
	Warning	Rainfall Event	7/15/18	7/16/18		2			
	Warning	Rainfall Event	7/18/18	7/18/18		1			
	Warning	Rainfall Event	7/22/18	7/23/18		2			
	Warning	Rainfall Event	7/25/18	7/26/18		2			
	Warning	Rainfall Event	8/4/18	8/5/18		2			
	Warning	Rainfall Event	8/11/18	8/12/18		2			
	Warning	Rainfall Event	8/14/18	8/14/18		1			
	Warning	Rainfall Event	8/18/18	8/18/18		1			

Table B-3 Private Beaches Warnings and Closures (continued)

Beach	Types	Reason	Start Date	End Date	Beach Days	# of Beach-Specific Days	Notification (Beach Specific Days)		
							Warning	Closure	Total
MORRIS YACHT AND BEACH CLUB	Warning	Rainfall Event	6/4/18	6/5/18	88	2	19	0	19
	Warning	Rainfall Event	6/21/18	6/22/18		2			
	Warning	Rainfall Event	6/28/18	6/29/18		2			
	Warning	Rainfall Event	7/15/18	7/16/18		2			
	Warning	Rainfall Event	7/18/18	7/18/18		1			
	Warning	Rainfall Event	7/22/18	7/23/18		2			
	Warning	Rainfall Event	7/25/18	7/26/18		2			
	Warning	Rainfall Event	8/4/18	8/5/18		2			
	Warning	Rainfall Event	8/11/18	8/12/18		2			
	Warning	Rainfall Event	8/14/18	8/14/18		1			
	Warning	Rainfall Event	8/18/18	8/18/18		1			
SCHUYLER HILL CIVIC ASSOCIATION	Warning	Rainfall Event	6/4/18	6/5/18	88	2	19	0	19
	Warning	Rainfall Event	6/21/18	6/22/18		2			
	Warning	Rainfall Event	6/28/18	6/29/18		2			
	Warning	Rainfall Event	7/15/18	7/16/18		2			
	Warning	Rainfall Event	7/18/18	7/18/18		1			
	Warning	Rainfall Event	7/22/18	7/23/18		2			
	Warning	Rainfall Event	7/25/18	7/26/18		2			
	Warning	Rainfall Event	8/4/18	8/5/18		2			
	Warning	Rainfall Event	8/11/18	8/12/18		2			
	Warning	Rainfall Event	8/14/18	8/14/18		1			
	Warning	Rainfall Event	8/18/18	8/18/18		1			
SEAGATE 42nd					107	0	0	0	0
SEAGATE BEACH CLUB					107	0	0	0	0
TRINITY DANISH YOUNG PEOPLE'S SOCIETY	Warning	Rainfall Event	6/4/18	6/5/18	88	2	19	0	19
	Warning	Rainfall Event	6/21/18	6/22/18		2			
	Warning	Rainfall Event	6/28/18	6/29/18		2			
	Warning	Rainfall Event	7/15/18	7/16/18		2			
	Warning	Rainfall Event	7/18/18	7/18/18		1			
	Warning	Rainfall Event	7/22/18	7/23/18		2			
	Warning	Rainfall Event	7/25/18	7/26/18		2			
	Warning	Rainfall Event	8/4/18	8/5/18		2			
	Warning	Rainfall Event	8/11/18	8/12/18		2			
	Warning	Rainfall Event	8/14/18	8/14/18		1			
	Warning	Rainfall Event	8/18/18	8/18/18		1			

Table B-3 Private Beaches Warnings and Closures (continued)

Beach	Types	Reason	Start Date	End Date	Beach Days	# of Beach-Specific Days	Notification (Beach Specific Days)		
							Warning	Closure	Total
WEST FORDHAM STREET ASSOCIATION	Warning	Rainfall Event	6/4/18	6/5/18	88	2	19	0	19
	Warning	Rainfall Event	6/21/18	6/22/18		2			
	Warning	Rainfall Event	6/28/18	6/29/18		2			
	Warning	Rainfall Event	7/15/18	7/16/18		2			
	Warning	Rainfall Event	7/18/18	7/18/18		1			
	Warning	Rainfall Event	7/22/18	7/23/18		2			
	Warning	Rainfall Event	7/25/18	7/26/18		2			
	Warning	Rainfall Event	8/4/18	8/5/18		2			
	Warning	Rainfall Event	8/11/18	8/12/18		2			
	Warning	Rainfall Event	8/14/18	8/14/18		1			
	Warning	Rainfall Event	8/18/18	8/18/18		1			
WHITE CROSS FISHING CLUB	Warning	Rainfall Event	6/4/18	6/5/18	82	2	25	0	25
	Warning	Rainfall Event	6/21/18	6/22/18		2			
	Warning	Rainfall Event	6/28/18	6/29/18		2			
	Warning	Rainfall Event	7/15/18	7/16/18		2			
	Warning	Rainfall Event	7/18/18	7/18/18		1			
	Warning	Rainfall Event	7/22/18	7/23/18		2			
	Warning	Rainfall Event	7/25/18	7/25/18		1			
	Warning	Enterococci Exceedance	7/26/18	8/1/18		7			
	Warning	Rainfall Event	8/4/18	8/5/18		2			
	Warning	Rainfall Event	8/11/18	8/12/18		2			
	Warning	Rainfall Event	8/14/18	8/14/18		1			
Warning	Rainfall Event	8/18/18	8/18/18	1					
WHITESTONE BOOSTER CIVIC ASSOCIATION	Warning	Rainfall Event	5/27/18	5/27/18	80	1	27	0	27
	Warning	Rainfall Event	6/4/18	6/5/18		2			
	Warning	Rainfall Event	6/21/18	6/22/18		2			
	Warning	Rainfall Event	6/28/18	6/29/18		2			
	Warning	Enterococci Exceedance	7/12/18	7/18/18		7			
	Warning	Rainfall Event	7/22/18	7/23/18		2			
	Warning	Rainfall Event	7/25/18	7/26/18		2			
	Warning	Rainfall Event	8/4/18	8/5/18		2			
	Warning	Rainfall Event	8/11/18	8/14/18		4			
	Warning	Rainfall Event	8/18/18	8/19/18		2			
Warning	Rainfall Event	8/22/18	8/22/18	1					
Private Beaches TOTAL					1513	306	306	0	306

APPENDIX C: 2018 INSPECTION SUMMARY

Table C-1: Inspection Non-Compliance Summary *

Beach Name	General Violations**		
	167.09(13)	167.09(b)	167.05(a)
CONEY ISLAND BEACH	X		
DANISH AMERICAN BEACH CLUB		X	
SEA GATE BEACH CLUB			X

* All other beaches were in full compliance of the regulations at the time of inspection

**** General Violations:**

- 167.09(13) Any other condition determined to be a Public Health Hazard by the department (observed beach boardwalk in disrepair)
- 167.09(b) Most recent inspection report is not readily available at facility for inspection
- 167.05(a) Permit is not conspicuously posted during the time of inspection