

37th

Annual
Awards
For
Excellence
In Design



June 4, 2019

Dear Friends:

I am delighted to welcome everyone to the New York City Public Design Commission's 37th Annual Awards for Excellence in Design.

My administration is continuing to fulfill our mission to transform New York into one of the fairest and most equitable cities in the world, and by making vital improvements to our public infrastructure, iconic buildings, parks and open spaces, we have continued to set new precedents for sustainability, resiliency, and innovation. We are proud to have ushered in a new era of urban design that is focused on creating a better future for the next generation, and through the leadership of the New York City Public Design Commission, our communities have been enhanced and transformed while retaining the history, diversity, and dynamic energy that is emblematic of our entire city.

Since 1983, the NYC Public Design Commission has celebrated groundbreaking public projects that are bettering the lives of New Yorkers with its Annual Awards for Excellence in Design. From an innovative neighborhood development that blends together affordable housing, recreation, and economic opportunity to a new facility that will help clean the Gowanus Canal and also provide 1.6 acres of green space, a humane animal shelter, and a welcoming community garden and greenhouse, this year's winning projects represent the countless ways that good design can inspire all of us to work towards a better future. I am proud to join with all those gathered in applauding all of the talented design professionals, artists, and leaders being honored today who are enriching the five boroughs as we continue to create a city where all can share in its prosperity and great promise.

Sincerely,

A handwritten signature in black ink, appearing to read "Bill de Blasio". The signature is fluid and cursive, with a long horizontal stroke at the end.

Bill de Blasio
Mayor

37th Annual Awards for Excellence in Design

Ford Foundation Center for Social Justice

Tuesday, June 4, 2019

Bill de Blasio

Mayor

Vicki Been

Deputy Mayor for Housing
and Economic Development

Public Design Commission of the City of New York

Signe Nielsen, President

Landscape Architect

Philip E. Aarons, Vice President

Lay Member

Laurie Hawkinson

Architect

Manuel Miranda

Lay Member

Richard Moore

Brooklyn Museum

Susan Morgenthau

The New York Public Library

Ethel Sheffer

Mayor's Representative

Dr. Merryl H. Tisch

The Metropolitan Museum of Art

Shin-pei Tsay, Secretary

Lay Member

Mary Valverde

Sculptor

Hank Willis Thomas

Painter

Justin Garrett Moore, Executive Director

Keri Butler, Deputy Executive Director

Grace Han, Director of Capital Projects

Rebecca Macklis, Senior Urban Design Manager

Jenna Miller, Urban Design & Policy Manager

Julianna Monjeau, Archivist & Senior Records Manager

Carolina Llano, Project Manager

Mary Beth Betts, Tour Manager

Gail Cornell, Gary Deane, Gail Green, Deirdre LaPorte,
and Patricia Orfanos, Docents

Public Design Commission of the City of New York

The Public Design Commission reviews permanent works of architecture, landscape architecture, and art proposed on or over City-owned property. As established by the New York City Charter in 1898, the Commission comprises 11 members, and includes an architect, landscape architect, painter, and sculptor as well as representatives of the Brooklyn Museum, Metropolitan Museum of Art, New York Public Library, and the Mayor. The Commission is an advocate for excellence and innovation in the public realm, ensuring the viability and quality of public programs and services throughout the city for years to come.

Annual Awards for Excellence in Design

Since 1983, the Commission has recognized thoughtful and innovative public projects with its Annual Awards for Excellence in Design. Selected from the hundreds of submissions reviewed by the Commission the previous year, these winning projects exemplify a well-rounded approach to design that goes beyond aesthetics to create meaningful and welcoming civic spaces and resilient infrastructure.

Ford Foundation Center for Social Justice

The Ford Foundation Center for Social Justice is a hub for social good and the courageous people who devote their lives to achieving it. The Ford Foundation building was commissioned by Henry Ford II in the 1960s. The architectural firm of Kevin Roche John Dinkeloo and Associates designed a soaring, inspiring space for the foundation's headquarters: a radically transparent building of glass, granite, and Corten steel that stretches the width of the block between 42nd and 43rd streets. The 12-story enclosed atrium garden, designed by Dan Kiley, was the first of its kind in the United States.

Between 2015 and 2018, the building underwent a renovation led by architecture and design firm Gensler that preserved its original character while making it even more open, inclusive, and environmentally friendly. Driven by a mission to serve the individuals, institutions, and ideas that are broadening the frontiers of social change, the building features 81,000 square feet of convening space for the social sector, and a beautiful garden and social justice art gallery that are open to the public.

Thank you to the Associates of the Art Commission, the Ford Foundation Center for Social Justice, the Mayor's Print Shop, the Mayor's Office of Special Projects and Community Events, PDC Commissioner Susan Morgenthau, and Alicia West.

The Peninsula

Mixed-use Development

Tiffany Street, Spofford Avenue, and Manida Street, Bronx

A project of the Economic Development Corporation

WXY architecture + urban design
Body Lawson Associates Architects & Planners
Elizabeth Kennedy Landscape Architect

Anchored by 740 units of affordable housing, The Peninsula includes a light industrial hub, creative production and rehearsal spaces, a daycare, a health and wellness center, and a supermarket. When complete, this project will transform the 4.75-acre site of the former Spofford Juvenile Detention Center into a vibrant, mixed-use community.

Materials for the development were guided by the character of the residential and industrial fabric of Hunts Point. The housing is predominately brick, employing subtle variations in color and pattern to give each building its own identity. Commercial and community spaces feature concrete, steel, and glass to create a link with the neighborhood's industrial buildings.

A network of publicly accessible open spaces connects the new development with the surrounding neighborhood, while negotiating the site's sloping topography. The landscape blends engineered hardscape with a sense of local nature, using native groundcovers, shade trees, and salvaged rock to recall the natural ledge formations found in the Bronx.

Design Team

WXY architecture + urban design Claire Weisz, Principal; Mark Yoes, Principal; Jacob Dugopolski, Senior Associate; Tom Offord, Project Manager; Christian Rutherford, Designer; Allison Yung, Designer; Ronnie Katakai, Designer; **Body Lawson Associates Architects & Planners** Víctor F. Body Lawson, Principal; Antonia Walker, Project Manager; Luis Chacha, Designer; Gloria Bautista, Designer; **Elizabeth Kennedy Landscape Architect** Elizabeth Kennedy, Principal; Andrew D. McHenry, Designer; Nicholas Pretel, Designer; Hito Rodriguez, Designer; **Hudson Companies** Sally Gilliland, Principal; Aaron Koffman, Principal; Arianna Sacks Rosenberg, Director; Pedram Mahdavi, Senior Project Manager; Max Zarin, Project Manager; **Gilbane Development Company** Katherine Gray, Development Director; Blaise Rastello, Development Director; Dimitrios Katehis, Construction Executive; **MHANY Management** Ismene Speliotis, Executive Director; **Economic Development Corporation** James Patchett, President & Chief Executive Officer; Seth Myers, Executive Vice President; Susan Goldfinger, Senior Vice President; Robert Holbrook, Senior Vice President; Josh Mitchell, Senior Vice President; Gale Rothstein, Vice President; Charlie Samboy, Vice President; Diana Clement, Assistant Vice President; Sharon Tepper, Assistant Vice President



Third Street Men's Shelter Garden and Greenhouse

A project of the Department of Homeless Services

Hester Street Grain Collective Project Renewal

Designed in close consultation with residents of the Third Street Men's Shelter and completed in 2018, this project transformed an underutilized East Village lot into a welcoming and productive green space. The garden and greenhouse provide educational spaces for Project Renewal's culinary training, horticultural therapy, and wellness programs along with a communal open area for shelter residents.

The garden features brightly colored seating, a shade structure, raised planting beds, and permeable paving. A greenhouse with rainwater collection extends the growing season and supports educational and social services programs. Shelter residents participating in Project Renewal's Culinary Arts Training Program will cultivate herbs and vegetables in the garden and greenhouse that will ultimately be prepared by City Beet Kitchens, a social enterprise linking low-income and formerly homeless adults with food service industry training and jobs.

Design Team

Hester Street Betsy MacLean, Executive Director; Julia Lindgren, Senior Project Manager; Kim Ochilo, Senior Project Associate; **Grain Collective** Runit Chhaya, Principal; Kate Belsky, Senior Landscape Architect; **Project Renewal** Stephanie Cowles, Deputy Director; Shannon Potts, Senior Shelter Director; **Department of Homeless Services** Joslyn Carter, Administrator; James Russo, Chief Operations Officer; Robert Groppe, Assistant Commissioner, Environmental Design & Construction; Anil Wadhwan, Director Capital Projects; Marcia Williams, Deputy Director Capital Projects; Raymond Ortega, Sr., Project Manager



Manhattan Pet Adoption Center

323 East 109th Street, Manhattan

A project of the Department of Design and Construction, the Department of Health and Mental Hygiene, and Animal Care Centers of New York City

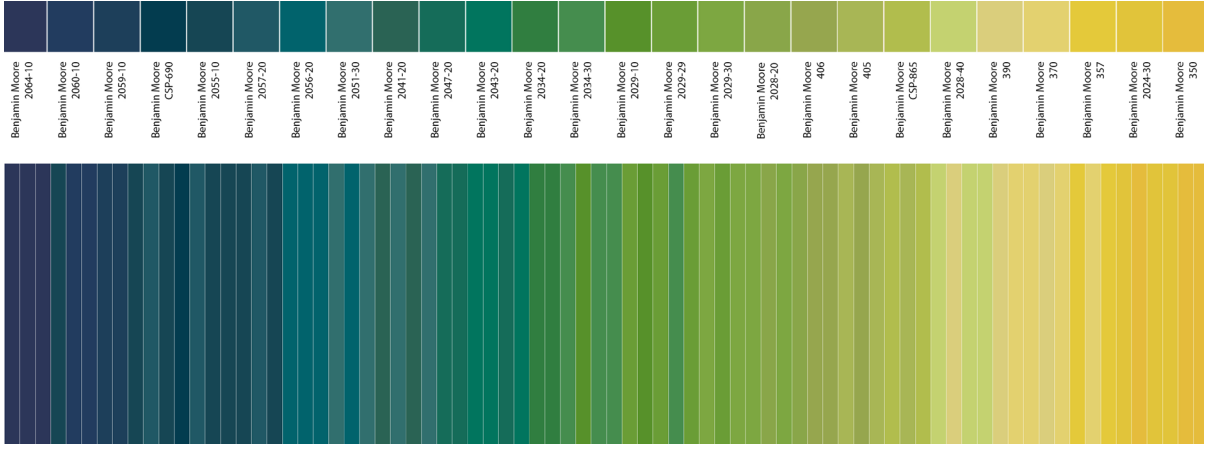
Studio Joseph

The Manhattan Pet Adoption Center will provide a dedicated adoption facility for the Animal Care Center of East Harlem. This adaptive reuse of a one-story garage will convert a deteriorated structure into a lively and welcoming community facility that offers a safe and healthy environment for dogs, cats, and rabbits awaiting adoption.

The renovation strategically enhances the building's façade to bring in daylight to the animals and create an attractive and engaging street presence. An overhead garage door is reimagined as a gracious entry and storefront window with a ceramic frit pattern that provides solar screening while offering views into a cat colony within. A steel rainscreen adds depth while preserving the existing masonry behind. The clever use of a color gradient on the screen's 3"-deep fins offers an intriguing optical illusion as people approach, encouraging future pet owners to come inside.

Design Team

Studio Joseph Wendy Evans Joseph, Partner; Rafael Herrin-Ferri, Architect; Alexios Bacolas, Project Manager; Connie Wu, Associate; Chris Raeburn, Senior Designer; Shuo Yang, Designer; Derek Lee, Designer; Emma Chen, Designer; **Silman** Jennifer Chan, Engineer; Jason Tipold, Associate; **Hage** Mark Hage, Principal; Plus Group Imtiaz Mulla, Principal; Marina Solovchuk, Principal; **Sighte Studio** Francesca Bastianini, Lighting Specialist; **Derosier** Jeffrey Derosier, Civil Engineer; **Animal Arts** Tony Cochrane, Animal Specialist; **Ellana** Rigo Hernández, Senior Estimator; **Department of Design and Construction** Lorraine Grillo, Commissioner; Jamie Torres-Springer, First Deputy Commissioner; Thomas Foley, Deputy Commissioner of Public Buildings; Christine Pohila, Senior Program Administrator; Michaela Metcalfe, Director of Design and Construction Excellence; Becky Yurek, Design Liaison; Daphne Lasky, Design Liaison; Rebecca Clough, Associate Commissioner; Christine Flaherty, Associate Commissioner; Eric Boorstyn, Associate Commissioner; Michael Nastasi, Assistant Commissioner; Oscar Gonzalez, Assistant Commissioner; Sergio Silveira, Assistant Commissioner; Susan Koparanian, Program Director; Kristina Blazeveski-Charpentier, Deputy Program Director; Jyh-Meei Jong, Senior Project Manager; Ron Tagliagambe, Director of Architecture; Isaac Vanunu, Director of Engineering; Starling Keene, Deputy Director of Architecture; Ashwani Bedi, Deputy Director of Engineering; Lili Khansari, A&E Team Leader; Christopher Diamond, Director of Sustainability; Kiumars Q. Amiri, Sustainability Project Director; Mathew Park, Chief of Commissioning; Rebecca Massey, Commissioning Project Director; Margaret Castillo, Chief Architect; Rick Bell, Former Executive Director of Design and Construction Excellence; **Department of Health and Mental Hygiene** Oxiris Barbot, Commissioner; Julie A. Friesen, Deputy Commissioner of Administration; Corinne Schiff, Deputy Commissioner of Environmental Health; Mario Merlino, Assistant Commissioner of Veterinary and Pest Control Services; Sheila Benjamin, Assistant Commissioner of Facilities Planning and Administrative Services; Sally Yap, Executive Director of Facilities Planning and Space Management; Jose Adames, Director of Architecture and Engineering; Stephen Doherty, Former Director of Architecture and Engineering; Geoffrey Gorousingh, Project Manager; **Animal Care Centers of New York City** Risa Weinstock, President & CEO; Jennifer Piibe, General Counsel; Emmanuel Rivera, Facilities Supervisor



Vision Zero Great Streets Queens Boulevard

Queens Boulevard from Roosevelt Avenue to Union Turnpike, Queens

A project of the Department of Design and Construction and the Department of Transportation

AECOM NV5

The Vision Zero Great Streets initiative aims to transform Queens Boulevard into one of the grand thoroughfares of the Eastern Seaboard. Stretching five miles through the most vibrant and diverse neighborhoods in New York City, Queens Boulevard intersects with cultural institutions, shopping centers, four major highways, ten subway stations, and over a dozen bus lines. However, even as the borough of Queens flourishes, its central boulevard remains one of the most dangerous corridors in the city.

The design will calm traffic by widening the service road and provide a raised bike path, pedestrian walkways and broad, tree-filled medians with lush landscaping, bicycle racks, and comfortable seating areas. The bus stops will be relocated to let-off passengers onto the widened service road medians, providing more generous circulation areas for pick-up and drop-off. When the project is complete, this multimodal transit corridor will be a destination enjoyed by locals and visitors alike and, most importantly, it will be safer for all.

Design Team

AECOM Tom Tehrani, Vice President; Semyon Burshteyn, Vice President; Elizabeth Thompson, Associate Vice President; Chanel Lubin, Project Manager; Matthew Kusy, Engineer; Jayvon Johnson, Engineer; Jeffrey Meyers, Associate Vice President; Yang Liu, Engineer; Paul Aviza, Project Manager; Mark Bauer, Engineer; **NV5** Jackson Wandres, Director of Landscape Architecture; Alexander Berryman, Landscape Architect; Maria Torres, Assistant Landscape Architect; Joseph Menzer, Director of Engineering; Robert Fliegel, Engineer; **EnTech Engineering** Sue Bayat, President; Daniel Warren, Director; **Hirani Engineering & Land Surveying** Jitendra Hirani, President; Abraham Rodriguez, Director; **WSP** Bernard Kalus, Senior Vice President; Adam Kwartowitz, Supervising Engineer; **SI Engineering** Sarwat Izhar, President; Ming Chen, Electrical Engineer; **Greenman-Pedersen** Michael Salatti, Vice President; Robert Pulver, Traffic and Intelligent Transportation Systems; **W Architecture and Landscape Architecture** Barbara Wilks, Principal; **KLD Engineering** Satya Muthuswamy, President; **Department of Design and Construction** Lorraine Grillo, Commissioner; Jamie Torres-Springer, First Deputy Commissioner; Eric Macfarlane, Deputy Commissioner; Mohsen Zargarelahi, Associate Commissioner; How Sheen Pau, Assistant Commissioner; Jorge Tua, Director; Glorybee Taveras, Engineer-in-Charge; Jason Mai, Project Manager; Scott Makosiej, Design Liaison; Michaela Metcalfe, Director of Design and Construction Excellence; Becky Yurek, Public Design Commission Liaison; **Department of Transportation** Polly Trottenberg, Commissioner; Joseph Jarrin, Executive Deputy Commissioner; Margaret Forgione, Chief Operations Officer; Eric Beaton, Deputy Commissioner, Transportation Planning & Management; Ann Marie Doherty, Senior Director; Chris Brunson, Director; Lily Gorden-Koven, Senior Project Manager; Navjodh Singh, Director of Transportation Analysis; Olivia Gibbeson, Urban Designer; Chiragi Amin, Director of Geometric Design - Queens; MD Rahman, Queens Project Coordinator; Elizabeth Franklin, Associate Commissioner, Budget and Capital Program Management; Richard Egan, Executive Director, Capital Project Engineering; Hanan Bashjawish, Director; MD Hasan, Project Manager; Leslie Wolf, Executive Director, Capital Project Planning; Christopher Hamby, Co-Director; Gavin Barber, Co-Director; Wendy Feuer, Assistant Commissioner, Urban Design, Art, and Wayfinding; Neil Gagliardi, Director of Urban Design; Nicholas Pettinati, Deputy Director of Urban Design; Betsy Jacobson, Senior Project Manager



Gowanus Combined Sewer Overflow Facility and Open Space

Gowanus Canal, Butler Street, Nevins Street, and Degraw Street, Brooklyn

A project of the Department of Environmental Protection and the Department of Parks & Recreation

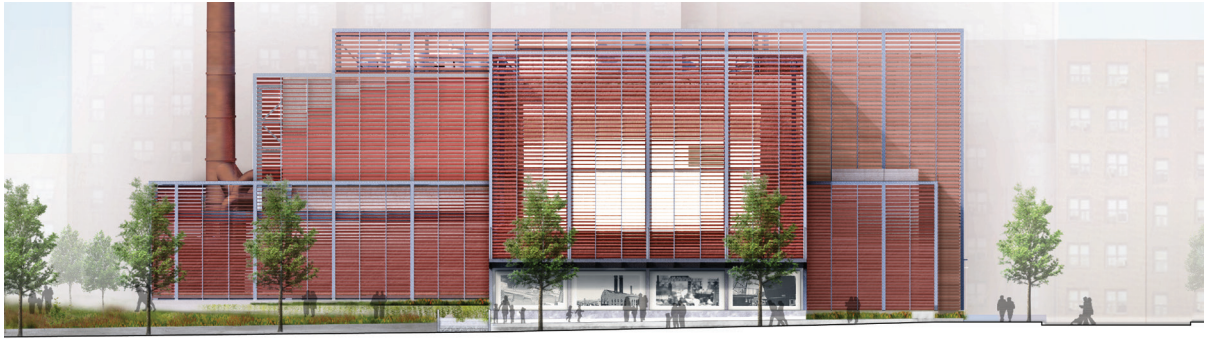
Selldorf Architects DLANDstudio

Continuing the City's work to limit combined sewer overflows into the Gowanus Canal, this proposed 8-million-gallon underground tank and associated headhouse will intercept and store combined sewage during wet weather events. The massing of the headhouse is guided by the equipment and processes within, creating an assemblage of volumes that are unified by an exterior scrim of terracotta baguettes in varying shades of red and orange. The aperture and orientation of the baguettes are manipulated to create areas of visual permeability, establishing a sense of depth and revealing elements of the facility's interior operation.

The 1.6-acre open space offers multipurpose passive recreation and a waterfront esplanade while allowing for maintenance access to the tanks below. Inspired by the canal's natural and industrial past, the landscape design features hardy plantings, granite setts, concrete seating elements, and Corten steel edging. Throughout, seat walls serve double duty as retaining walls to maximize soil volume and greenspace. Along Nevins Street, the sloped planted edge is punctuated with symbolic reveals of the tank beneath. To complement these subtle glimpses of the wastewater infrastructure, the headhouse affords visitors the opportunity to learn through digital graphics about the inner workings of the facility and the history of Gowanus.

Design Team

Selldorf Architects Annabelle Selldorf, Principal; Lisa Green, Principal; Julie Hausch-Fen, Principal; Kevin Keating, Studio Director; Kristine Makwinski, Project Architect; Dante Furioso, Architectural Designer; **DLANDstudio** Susannah Drake, Principal; Sandra Chuck, Principal; Josh Price, Associate; Mary Hohlt, Designer; Erin Wythoff, Designer; **Hazen** Charles Hocking, President & Chief Executive Officer; Norm Bradley, Associate Vice President; Lisa Giroux, Associate Vice President; Michael Stallone, Senior Associate; Eliora Camilleri, Associate; Paul Knowles, Associate; **Brown and Caldwell** Geoff Grant, Vice President/Managing Director; Jeff Caputi, Vice President/Managing Director; Rick Carrier, Vice President; Gui DeReamer, Project Manager; Tania Romero, Project Engineer; David Varjabedian, Managing Civil Engineer; **Department of Environmental Protection** Vincent Sapienza, Commissioner; Ana Barrio, Deputy Commissioner for Engineering, Design & Construction; Michael DeLoach, Deputy Commissioner for Public Affairs & Communications; James Mueller, Agency Chief Engineer; Michael Borsykowsky, Assistant Commissioner, Water Systems Capital Program; Kevin Clarke, Portfolio Manager; Lindsay Degueldre, Executive Program Manager; Natalia Perez, Project Manager; Alicia West, Director of Public Design Outreach; **Department of Parks & Recreation** Mitchell J. Silver, Commissioner; Therese Braddick, Deputy Commissioner, Capital Projects; Mark Focht, Deputy Commissioner/Chief Operating Officer; Alyssa Cobb Konon, Deputy Commissioner, Planning and Development; Martin Maher, Brooklyn Borough Parks Commissioner; Nancy Prince, Chief of Landscape Architecture; Nick Molinari, Chief of Planning & Neighborhood Development; David Martin, Team Leader for Brooklyn; Eric Mattes, former Brooklyn Design Director; Elizabeth Ernish, Project Administrator; Rande Stewart, Consultant Project Manager; Sheena Brown, Public Design Commission Liaison



Bay Breeze Park

Beach Channel Drive between Old Beach 88th Street and Beach 89th Street, Far Rockaway, Queens

A project of the Department of Parks & Recreation

Quennell Rothschild & Partners Sage and Coombe Architects

The construction of this new 2-acre park on the Jamaica Bay shore will offer a community beach-front destination with expansive views over the bay, a mounded lawn for passive recreation, a playground, and kayak amenities, including a launch and storage building. Anchoring the western edge of the park, the storage building is enclosed with a porous aluminum grille façade that allows water to flow through the structure in the event of flooding. Its sloped roof extends as a canopy toward the water's edge to form a generous shaded pavilion.

The landscape design capitalizes on existing site features, such as a circular foundation wall – a relic of the site's industrial past – re-envisioned as a seating terrace and the stone jetty, reinforced with riprap that extends to establish a resilient, stabilized shoreline. Wending through extensive areas of native plantings, a network of walking paths connect visitors to seating areas, a water-themed playground with log, rock, and canoe play elements, and a grand stair that leads down to the beach.

Design Team

Quennell Rothschild & Partners Alison Shipley, Partner; Nate Harris, Associate; Rucha Mandlik, Landscape Designer; Adel Vaughn, Landscape Designer; Crystal Xing, Landscape Designer; **Sage and Coombe Architects** Jennifer Sage, Partner; Peter Coombe, Partner; Chris Raeburn, Project Architect; Munjer Hashim, Designer; **McLaren Engineering Group** Jeremy Billig, President-Structural Engineer; Steven Grogg, Senior Vice President; Stephen Famularo, Director of Marine Engineering; Luke Daur, Associate Geotechnical Engineer; Eric Schwartz, Project Manager Structural; Brenden Kelly, Project Civil Engineer; Olabisi Kenku, Expert Environmental Engineer; **Wesler-Cohen Associates** Bill Ackerman, Principal-Electrical Engineer; **Department of Parks & Recreation** Mitchell J. Silver, Commissioner; Therese Braddick, Deputy Commissioner, Capital Projects; Dorothy Lewandowski, former Queens Borough Parks Commissioner; Nancy Prince, Chief of Landscape Architecture; Joanne Amagrande, Chief of Staff for Queens; Vincent Cirrito, former Team Leader for Queens; Diane Dreier, Queens Design Director; James Mituzas, Queens Design Director; Portia Dyrenforth, former Rockaway Park Administrator; Theresa Coulibaly, former Landscape Architect for Queens; Sheena Brown, Public Design Commission Liaison



Feynman Code by Pablo Helguera

Far Rockaway Community Library, 16-37 Central Avenue,
Far Rockaway, Queens

A project of the Department of Cultural Affairs' Percent for Art Program,
the Department of Design and Construction, and Queens Public Library

Pablo Helguera Snøhetta

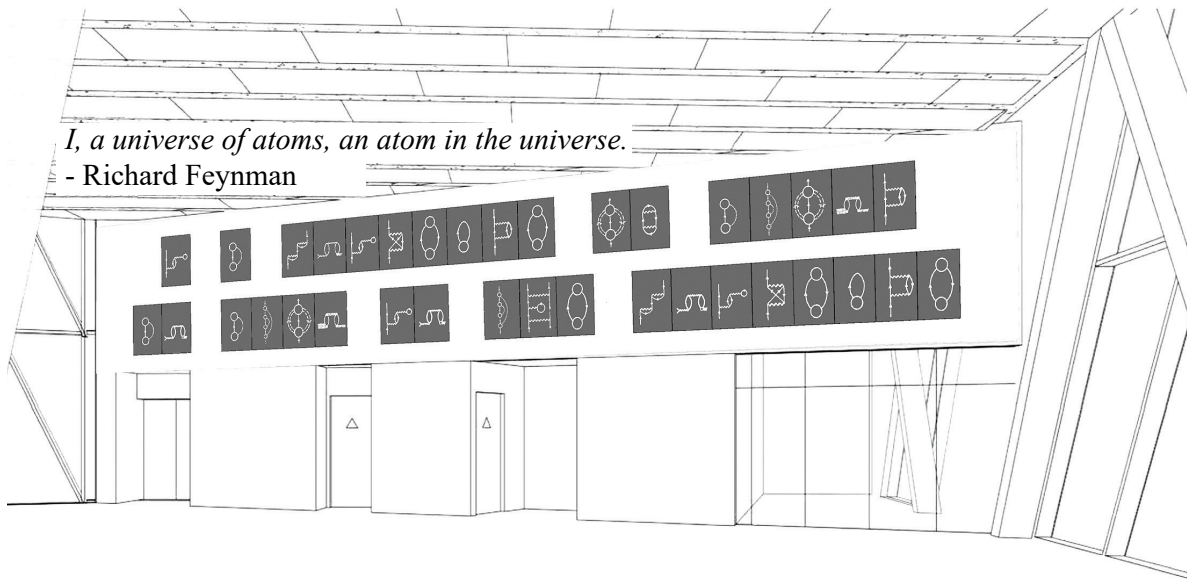
In this artwork for the new Far Rockaway Library, Mexican artist Pablo Helguera pays tribute to the Nobel Prize-winning theoretical physicist and Far Rockaway resident, Richard Feynman (1918-1988). Feynman is widely regarded as one of the most influential physicists of the 20th century for his work on nuclear physics and for his role in popularizing science through books and lectures.

Helguera's work often responds to local history, finding inspiration in education and literature. For this project, he invented a visual code that replaces every letter of the alphabet with one of Feynman's diagrams – pictorial representations of the mathematical expressions describing the behavior of subatomic particles.

At the second floor of the library's central atrium, the artist encodes two quotes, the first by the 19th-century American poet Emily Dickinson: "The brain is wider than the sky," and the other by Feynman himself: "I, a universe of atoms, an atom in the universe." This project celebrates Feynman's legacy and the value of intellectual curiosity that is embodied in the mission of public libraries.

Design Team

Pablo Helguera, Artist Dressler Parsons, Project Coordinator; JP-Anne Giera, Project Assistant; **Snøhetta** Craig Dykers, Founding Partner; Nathan McRae, Director and Senior Architect; John Oliver, Senior Architect; Emilie Alongi, Architect; **Department of Cultural Affairs** Tom Finkelpearl, Commissioner; Andrew Burmeister, Assistant Commissioner of Capital Projects; Kendal Henry, Director of Percent for Art; Reina Shibata, Deputy Director of Percent for Art; Sergio Pardo Lopez, Program Manager of Percent for Art; **Department of Design and Construction** Lorraine Grillo, Commissioner; Jamie Torres-Springer, First Deputy Commissioner; Thomas Foley, Deputy Commissioner; Christine Pohila, Senior Program Administrator; Michaela Metcalfe, Director of Design and Construction Excellence; Becky Yurek, Design Liaison; Daphne Lasky, Design Liaison; Christine Flaherty, Associate Commissioner; Eric Boorstyn, Associate Commissioner; Margaret Castillo, Chief Architect; Carol Clark, Director of Public Art; Xenia Diente, Deputy Director of Public Art; Dora Blount, Public Art Manager; Oscar Gonzalez, Assistant Commissioner; Owen Foote, Program Director; Maria Jansen, Deputy Program Director; Rene Tablante, Former Senior Project Manager; Anna Marie King, Project Manager; Ron Tagliagambe, Director of A&E Architecture; Isaac Vanunu, Director of A&E Engineering; Starling Keene, Deputy Director of A&E Architecture; Ashwani Bedi, Deputy Director of A&E Engineering; Frank Kugler, A&E Team Leader; **Queens Public Library** Dennis Walcott, President; John Katimaris, Director of Capital and Facilities Management; Robert Zoller, Director of Capital Management and Capital Contracts; Richard Tobin, Project Manager of Capital and Facilities Management; Chantal Antoine, Library Planner; Carlos Carbonero, Public Design Commission Liaison



<table border="1"> <thead> <tr> <th>CHARACTER</th> <th>CODE</th> <th>QUANTITY</th> <th>PROJECT</th> </tr> </thead> <tbody> <tr> <td>N</td> <td></td> <td>06</td> <td>FEYNMAN CODE by Pablo Helguera Percent for Art Program Fair Rockaway Library LQ0122-FA1</td> </tr> </tbody> </table>	CHARACTER	CODE	QUANTITY	PROJECT	N		06	FEYNMAN CODE by Pablo Helguera Percent for Art Program Fair Rockaway Library LQ0122-FA1	<table border="1"> <thead> <tr> <th>CHARACTER</th> <th>CODE</th> <th>QUANTITY</th> <th>PROJECT</th> </tr> </thead> <tbody> <tr> <td>O</td> <td></td> <td>03</td> <td>FEYNMAN CODE by Pablo Helguera Percent for Art Program Fair Rockaway Library LQ0122-FA1</td> </tr> </tbody> </table>	CHARACTER	CODE	QUANTITY	PROJECT	O		03	FEYNMAN CODE by Pablo Helguera Percent for Art Program Fair Rockaway Library LQ0122-FA1	<table border="1"> <thead> <tr> <th>CHARACTER</th> <th>CODE</th> <th>QUANTITY</th> <th>PROJECT</th> </tr> </thead> <tbody> <tr> <td>T</td> <td></td> <td>06</td> <td>FEYNMAN CODE by Pablo Helguera Percent for Art Program Fair Rockaway Library LQ0122-FA1</td> </tr> </tbody> </table>	CHARACTER	CODE	QUANTITY	PROJECT	T		06	FEYNMAN CODE by Pablo Helguera Percent for Art Program Fair Rockaway Library LQ0122-FA1	<table border="1"> <thead> <tr> <th>CHARACTER</th> <th>CODE</th> <th>QUANTITY</th> <th>PROJECT</th> </tr> </thead> <tbody> <tr> <td>U</td> <td></td> <td>02</td> <td>FEYNMAN CODE by Pablo Helguera Percent for Art Program Fair Rockaway Library LQ0122-FA1</td> </tr> </tbody> </table>	CHARACTER	CODE	QUANTITY	PROJECT	U		02	FEYNMAN CODE by Pablo Helguera Percent for Art Program Fair Rockaway Library LQ0122-FA1
CHARACTER	CODE	QUANTITY	PROJECT																																
N		06	FEYNMAN CODE by Pablo Helguera Percent for Art Program Fair Rockaway Library LQ0122-FA1																																
CHARACTER	CODE	QUANTITY	PROJECT																																
O		03	FEYNMAN CODE by Pablo Helguera Percent for Art Program Fair Rockaway Library LQ0122-FA1																																
CHARACTER	CODE	QUANTITY	PROJECT																																
T		06	FEYNMAN CODE by Pablo Helguera Percent for Art Program Fair Rockaway Library LQ0122-FA1																																
CHARACTER	CODE	QUANTITY	PROJECT																																
U		02	FEYNMAN CODE by Pablo Helguera Percent for Art Program Fair Rockaway Library LQ0122-FA1																																

Staten Island 1 & 3 Districts Garage

Fresh Kills, Muldoon Avenue and West Shore Expressway, Staten Island

A project of the Department of Design and Construction and the Department of Sanitation

TEN Arquitectos Sasaki

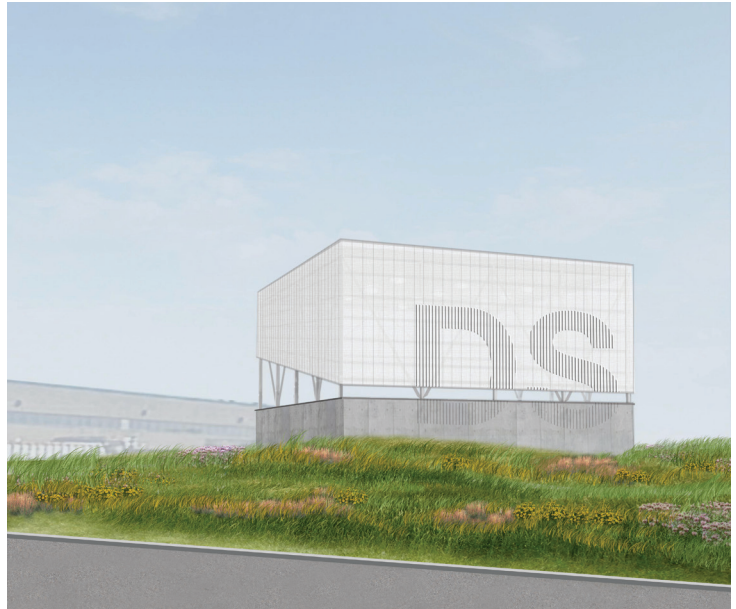
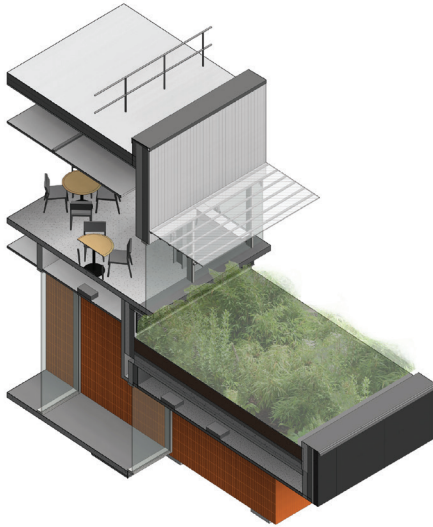
Located in a low-lying 13.7-acre site in Freshkills, this new facility will serve two sanitation districts with vehicle storage and repair, office and personnel spaces, a household recycling center, and salt storage. The garage features two stacked, offset volumes with metal above and concrete below, establishing a sense of human scale across the expansive façade.

At the front of the garage, bright orange tiles mark the ground floor entry, above which a glazed staff cafeteria offers views out onto a small green roof. Capitalizing on the 120,000-square-foot roof, the project includes a sprawling array of rooftop photovoltaic panels, contributing to the City's goals of reducing greenhouse gas emissions by at least 80 percent by 2050.

At the southern edge of the site, the sculptural salt shed prominently and proudly displays the DSNY logo. On the northern edge, the household recycling center offers a welcome community resource. The landscape is designed for safe and efficient vehicular circulation and comprehensive storm water management while integrating three native ecological systems – grasslands, woodlands, and wetlands – to support native habitats, enhance the visitor's experience, and tie into broader local ecosystems.

Design Team

TEN Arquitectos Enrique Norten; Andrea Steele; Charles Mattern; Ian Colburn; Nick Benner; Mahasti Fakour; Sonny Patel; Nicole Reamey; Fanny Adler; Andrew Schalk; Daniel Kuehn; Cesar Crespo; **Sasaki** Isabel Zempel; Mauricio Gomez; Phyllis Zhou; Breeze Outlaw; Andrew Sell; **Bialosky** William Bialosky; Bruce Horton; Jon Spring; Beau Bock; John Popple; Nick New; Kate Walker; **Simpson Gumpertz & Heger** Kevin Poulin; Scott N. Bondi; Rebecca Jones; Matthew Memberg; Abdisa Musa; Desiree Alghobahi; Anya L. LaRoche; **Eftinger Engineering** Ed Eftinger; Waldir Alvarez; Pournamasi Rath; Maria Sawchuk; George Armstead; Alex Smaga; Tom York; Vincent Leahy; Alex Zabolotsky; Cal Graziano; Piotr Bebenek; Mojtaba Tahiri; Santiago Quijano; Yiming Liu; Ahmed Elrawi; Nathan Hiebert; Saroj Bhattarai; Ramon Espinal; **Langan Engineering** Alan Poeppel; Christopher Vitolano; Adnan Pasha; Paul McAndrew; James Harley; Rajeev Raina; Stuart Knoop; Brian Conway; Terrence Cheung; Karmen Chong; Kevin Rogovich; Andrew Foertsch; **Horton Lees Brogden** Barbara Horton; Michelle Douglas; Ketryna Fares; Marta Casarin; **Selbert Perkins Design** Cliff Selbert; Tom Wojciechowski; Kevin Parker; Stevie Bales; **Department of Design and Construction** Lorraine Grillo, Commissioner; Jamie Torres-Springer, First Deputy Commissioner; Thomas Foley, Deputy Commissioner; Christine Pohila, Senior Program Administrator; Michaela Metcalfe, Director of Design and Construction Excellence; Daphne Lasky, Design Liaison; Christine Flaherty, Associate Commissioner; Eric Boorstyn, Associate Commissioner; Bogdan Pestka, Assistant Commissioner; Glenn Brue, Program Director; John Ziedonis, Deputy Program Director; Juan Francisco Barajas Orozco, Senior Project Manager; Wasmiya Tan, Project Manager; Ron Tagliagambe, Director of Architecture; Isaac Vanunu, Director of Engineering; Starling Keene, Deputy Director of Architecture; Robert Markinson, A&E Team Leader; Christopher Diamond, Director of Sustainability; Rebecca Schmidt, Sustainability Project Director; Mathew Park, Chief of Commissioning; Rebecca Massey, Commissioning Project Director; Margaret Castillo, Chief Architect; **Department of Sanitation** Kathryn Garcia, Commissioner; Steven W. Costas, First Deputy Commissioner; Marie L. Jean-Louis, Assistant Commissioner; Rahul Shah, Deputy Chief Engineer; Mike Friedlander, Director of Special Projects; Bo Kim, Administrative Engineer



SPECIAL RECOGNITION

The Bluebelt Program

Staten Island and Queens

The Department of Environmental Protection

The Department of Environmental Protection pioneered the Bluebelt system over 20 years ago as a means to manage stormwater runoff through natural drainage corridors including wetlands, ponds, and streams. These natural features are enhanced to better convey, store and filter stormwater before it is discharged into the local waterway. To date, over 70 Bluebelt projects have been completed in Staten Island and Queens.

In order to realize these projects and preserve open green space in Staten Island, over 400 acres of property was acquired by the City. In addition to reducing urban flooding and improving local water quality, the Bluebelts replace invasive plant species with native ones and provide an ecosystem for the reemergence of diverse wildlife such as turtles and birds. As New York City prepares for heavier rains due to climate change, Bluebelts offer a natural and effective toolkit for stable and sound stormwater management that can be employed through the city.

Design Team

Department of Environmental Protection Vincent Sapienza, Commissioner; Anastasios Georgelis, Deputy Commissioner for Water and Sewer Operations; Michael DeLoach, Deputy Commissioner for Public Affairs & Communications; Tom Wynne, Executive Director, Engineering and Planning; Jannine McColgan, Director of Engineering; Charles Olson, Chief, Urban Stormwater Planning; Jennifer Norton, City Research Scientist; Dean Cavallaro, Chief, Green Infrastructure Maintenance and Bluebelt Operations; James Rossi, Deputy Chief, Green Infrastructure Maintenance and Bluebelt Operations; Rob Brauman, Associate Project Manager, Green Infrastructure Maintenance and Bluebelt Operations; Joe Scarlotta, Supervisor Watershed Maintenance, Green Infrastructure Maintenance and Bluebelt Operations; Alicia West, Director of Public Design Outreach



SPECIAL RECOGNITION

The Mayoral Advisory Commission on City Art, Monuments, and Markers

A project of the Department of Cultural Affairs in partnership with the Public Design Commission, the Law Department, the Department of Parks & Recreation, and the Department of Education

In January 2018, the Mayoral Advisory Commission on City Art, Monuments, and Markers submitted its final report to the City of New York, establishing guiding principles for the critical review of the City's public art collection. Created by Mayor de Blasio in the wake of national uprisings against Confederate monuments, the Commission held a series of public hearings and meetings over the course of four months, offering opportunities for public dialogue, engagement, and debate.

Committed to a process of historical reckoning, the Commission members came to this project with a nuanced understanding of the complicated histories of our country. They gave thoughtful consideration to the various time periods and methods of acquisition that led to the current collection of public monuments and markers, which celebrates some histories and ignores others.

Ultimately, the Commission's final report can be seen as a blueprint for achieving equity and diversity in the City's public commemorations. And while there is a long road ahead, the process has already begun. With the announcement of She Built NYC, the City has committed to commissioning five new monuments to women within the next four years, beginning with Shirley Chisholm in Brooklyn's Prospect Park.

Co-Chairs

Darren Walker

President of the Ford Foundation, the nation's second largest philanthropy, and for two decades has been a leader in the nonprofit and philanthropic sectors; serves on the boards of Carnegie Hall, New York City Ballet, the High Line, the Arcus Foundation and PepsiCo.

Tom Finkelpearl

Commissioner of Cultural Affairs, New York City

Members

Richard Alba

Distinguished Professor at CUNY Graduate Center; President of the American Sociological Association

Michael Arad

Architect; designer of the World Trade Center Memorial

Harry Belafonte

Singer; songwriter; actor; civil rights activist

John Calvelli

Executive Vice President for the Public Affairs Division of the Wildlife Conservation Society (WCS) headquartered at the Bronx Zoo

Mary Schmidt Campbell

President of Spelman College; former Chair of the President's Committee on Arts and the Humanities; former Director of the Studio Museum of Harlem

Gonzalo Casals

Director of the Leslie-Lohman Museum of Gay and Lesbian Art; Professor of arts administration at Baruch College and Cultural Policy at Hunter College

Teresita Fernandez

Public artist; MacArthur Fellow

Amy Freitag

Executive Director of the JM Kaplan Fund; former Executive Director at New York Restoration Project

Jon Meacham

Professor at Vanderbilt University; Pulitzer prize-winning biographer of Jefferson and Jackson

Catie Marron

Chairman of the Board of Directors of the High Line; longtime contributing editor to Vogue

Pepón Osorio

Public artist focused on political and social issues in the Latino community; MacArthur Fellow

Harriet Senie

Public art scholar; author; Director of Museum Studies at City College of New York

Shahzia Sikander

Pakistani-American visual artist; MacArthur Fellow

Audra Simpson

Leading Native scholar; Mohawk anthropologist from the Kahnawake community in Quebec; Associate Professor of Anthropology at Columbia University with theoretical and ethnographic interest in the topics of nationhood, citizenship, colonialism, borders (US-Canada), and narrative

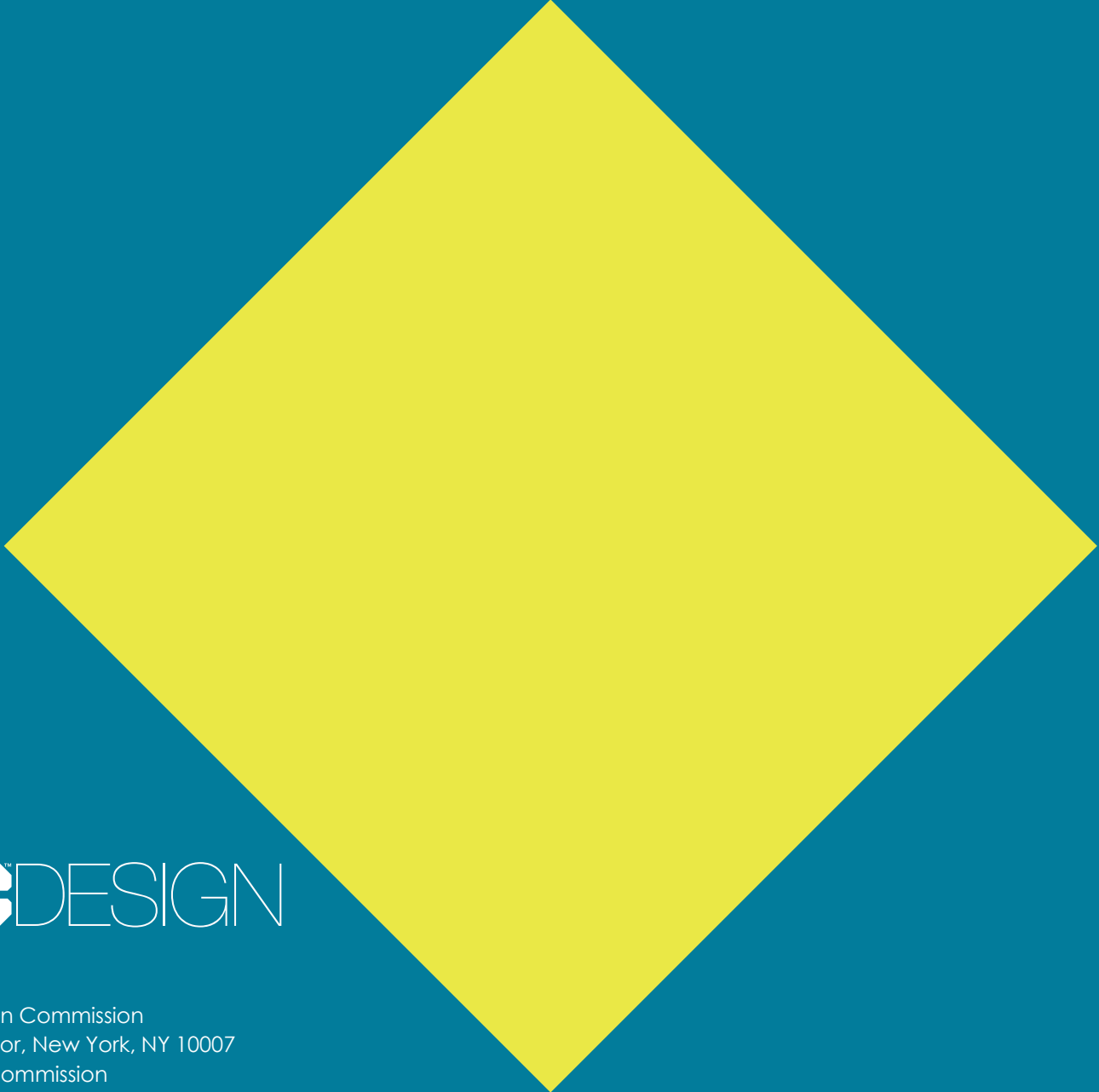
Dr. John Kuo Wei Tchen

Urban cultural historian; Associate Professor at New York University; the inaugural Clement A. Price Chair of Public History and Humanities, Rutgers at Newark

Mabel Wilson

Architect; scholar of race, memory, and urbanism; Professor at Columbia University





NYC[™]DESIGN

NYC Public Design Commission
City Hall, Third Floor, New York, NY 10007
nyc.gov/designcommission