

[Home](#)
**Customer Services**

- › [Pay Online](#)
- › [Ways to Pay Your Bill](#)
- › [eBilling](#)
- › [Account Information](#)
- › [Customer Assistance](#)
- › [Service Line Protection Program](#)
- › [Water Rates](#)
- › [Property Managers & Trade Professionals](#)

**Water Utilities**

- › [Drinking Water](#)
- › [Wastewater](#)
- › [Stormwater](#)
- › [Harbor Water](#)
- › [Long Term Control Plan](#)

**The Watershed**

- › [Watershed Protection](#)
- › [Watershed Recreation](#)

**Citywide Initiatives**

- › [Environmental Education](#)
- › [Conservation Programs](#)
- › [Air Pollution Control](#)
- › [Noise Codes & Complaints](#)

**Business and Professionals**

- › [Forms & Permits](#)
- › [Support for Businesses](#)
- › [Doing Business with DEP](#)
- › [Asbestos Abatement](#)
- › [Construction, Demolition & Abatement](#)

**About DEP**

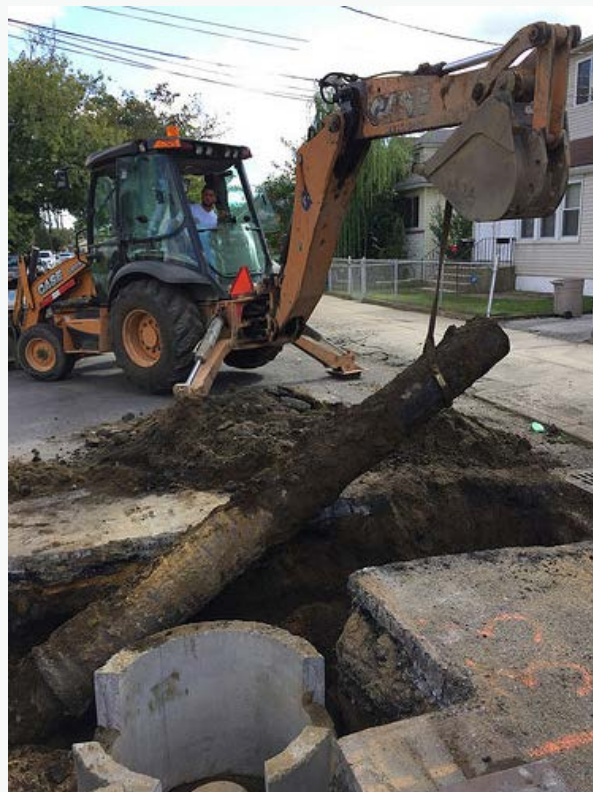
- › [Inside DEP](#)
- › [News](#)
- DEP Featured In...
- Press Releases
- Public Notices
- Testimony & Public Comments

FOR IMMEDIATE RELEASE 17-94

October 20, 2017

[depressoffice@dep.nyc.gov](mailto:depressoffice@dep.nyc.gov), (718) 595-6600

## Storm Sewer Extension Built to Improve Drainage in Rosedale



### Newly Added Infrastructure Will Help Alleviate Localized Street Flooding

#### Project Complements other Storm Sewer Extensions and Catch Basin Installations Completed Earlier this Summer throughout Southeast Queens

#### Construction Photos are Available on [DEP's Flickr Page](#)

The New York City Department of Environmental Protection (DEP) today joined with City Council Member Donovan Richards to announce the completion of a new storm sewer extension along a portion of 148<sup>th</sup> Avenue in Rosedale, Queens. This infrastructure upgrade will improve drainage in the community and help to alleviate localized street flooding. The project also complements the [\\$2.5 million investment](#) DEP made earlier this summer installing new catch basins and storm sewer extensions throughout the southeast Queens neighborhoods of St. Albans, Jamaica, South Jamaica and Laurelton, as well as other parts of Rosedale.

"This storm sewer extension will increase the local drainage system's capacity during heavy rainstorms, thereby reducing localized street flooding," said **DEP Commissioner Vincent Sapienza**. "This work, and the storm sewer extension projects completed earlier this summer, are helping to better manage stormwater

**More Information**

NYC Department of Environmental Protection  
Public Affairs

59-17 Junction Boulevard  
19<sup>th</sup> Floor  
Flushing, NY 11373  
(718) 595-6600

- › [Capital Projects](#)
- › [Careers at DEP](#)
- › [Environmental Reviews](#)
- › [Interagency MOUs](#)
- › [A to Z Index](#)
- › [Contact Us](#)

which, in turn, will improve the quality of life for Rosedale's residents.”

“For decades there were no solutions and residents of Rosedale had to accept flooding in their streets and homes on a regular basis,” said **Council Member Donovan Richards**. “Thankfully, Mayor de Blasio and DEP Commissioner Sapienza are in agreement with our office that this is unacceptable and are committed to solving this systemic issue. While we can't stop flooding overnight, each new project is a step towards solving this long-neglected problem that has impacted thousands of homeowners in southeast Queens.”

Construction included approximately 260 linear feet of a new 12-inch storm sewer along 148<sup>th</sup> Avenue, beginning just east of 259<sup>th</sup> Street and continuing on toward Francis Lewis Boulevard. Additionally, the project rehabilitated two existing catch basins and connected them to the new storm sewer. The New York City Department of Transportation resurfaced the roadway once the construction of the storm sewer extension and the rehabilitation of the catch basins was complete. Prior to the start of construction, DEP reached out to elected officials, Community Board 13 and residents of the impacted area to discuss the benefits this new infrastructure will bring to the neighborhood.

In addition to these types of storm sewer extension projects, Mayor de Blasio has committed \$1.7 billion to address flooding in southeast Queens. The bulk of the funding will go towards the construction of large trunk sewer spines along 150<sup>th</sup> Street, Guy Brewer Boulevard, Farmers Boulevard and Springfield Boulevard. This work will take place through approximately 15 separate projects, the first breaking ground in 2018. Dozens of smaller local sewer projects, such as [Hook Creek Boulevard and 119<sup>th</sup> Avenue](#), will connect neighborhoods to the trunk sewer spines.

Other improvements for southeast Queens include green infrastructure components at three City parks, two public schools, and one NYCHA facility. Bluebelts are also being constructed to help manage stormwater at [Springfield Lake](#), Baisley Pond, Twin Ponds and Brookville Triangle.

DEP manages New York City's water supply, providing approximately 1 billion gallons of high quality drinking water each day to more than 9 million residents, including 8.5 million in New York City. The water is delivered from a watershed that extends more than 125 miles from the city, comprising 19 reservoirs and three controlled lakes. Approximately 7,000 miles of water mains, tunnels and aqueducts bring water to homes and businesses throughout the five boroughs, and 7,500 miles of sewer lines and 96 pump stations take wastewater to 14 in-city treatment plants. DEP has nearly 6,000 employees, including almost 1,000 in the upstate watershed. In addition, DEP has a robust capital program that will create up to 3,000 construction-related jobs per year. For more information, visit [nyc.gov/dep](http://nyc.gov/dep), like us on [Facebook](#), or follow us on [Twitter](#).

 [All Press Releases](#)