

Third Annual Report on Homeless Deaths
New York City Department of Health and Mental Hygiene
Bureau of Vital Statistics
Local Law 63 of 2005
July 1, 2007 – June 30, 2008

Summary. For the time period July 1, 2007 through June 30, 2008, the NYC Department of Homeless Services (DHS), NYC Department of Housing Preservation and Development (HPD) and the Office of Chief Medical Examiner (OCME) reported a total of 190 homeless deaths, the largest number reported in three years; 162 and 125 homeless deaths were reported in the first and second annual reports respectively. During the same time period, the NYC Human Resources Administration (HRA) reported 45 homeless deaths, fewer than the 60 and 58 homeless deaths reported in the first and second annual reports. Due to confidentiality reasons, HRA data could not be assessed for potential duplication with deaths reported by the other agencies, or matched to death certificates. As a result, findings from the 2 groups of deaths are reported separately.

Among homeless decedents reported by DHS, HPD and OCME, most deaths (91%) were investigated by OCME; 90% and 83% were investigated by OCME in the first and second annual reports respectively. Men constituted 75% of deaths, comparable to the 80% and 74% reported in the first and second annual reports. More than half (53%) of homeless decedents continue to be between the ages of 45 and 64. Even with the increase in the number of homeless deaths (70(37%) compared to 79(49%) and 79(63%) in prior annual reports), slightly fewer were sheltered in this report than in previous reports. Among the sheltered, the majority (53%) continue to die in a hospital. This is the first annual report where the largest proportion of non-sheltered homeless decedents (45%) also died in a hospital. Seventeen percent died outdoors; among sheltered 3% died outdoors; among non-sheltered 14% died outdoors. Deaths of those found outdoors were due to exposure to cold as well as other causes. Twenty-three percent died in other locations; 3% of sheltered died in other locations and 21% of non-sheltered died in other locations.

The leading cause of death was diseases of the heart among 26% of homeless followed by overdose deaths (22%), reversing the rank order of the first two leading causes in the previous two annual homeless reports. The third leading cause of death was non-overdose accidents (14%), followed by assault (homicide) (5%), and mental disorders due to use of alcohol (5%). Of the non-overdose accidents, 5 homeless individuals died of exposure to excessive natural cold and no homeless individuals died of exposure to excessive natural heat

Similar descriptions were found for the 45 HRA reported homeless decedents. Information on cause of death, as per LL63, however, is not provided due to laws protecting data confidentiality. Approximately 69% of HRA decedents were men and most (73%) were between the ages of 45 and 64. All 45 HRA reported homeless decedents were sheltered as part of their shelter system; among them, the largest proportion (40%) died in a shelter. Information on whether HRA homeless decedents were investigated by OCME and cause of death is not available.

Introduction. This report has been prepared and submitted pursuant to Local Law 63 of 2005 (LL63), amending the Administrative Code of the City of New York to track and report deaths of homeless persons in the City of New York. Data contained in this report are for the annual period of July 1, 2007 – June 30, 2008 and were provided by the NYC Office of Chief Medical Examiner (OCME), the NYC Department of Homeless Services (DHS), the NYC Department of Housing Preservation and Development (HPD) and the NYC Human Resources Administration (HRA) to the Department of Health and Mental Hygiene (DOHMH).

DHS, HPD and HRA maintain records on the homeless individuals for whom they provide temporary housing in New York City. OCME, through its responsibilities over investigating NYC deaths, investigates the deaths of some homeless individuals. Data from these agencies were compiled, matched against NYC death certificates and analyzed by the DOHMH Office of Vital Statistics and is presented herein.

Definitions. As defined in LL63, a “homeless person” is “a person who at the time of death did not have a known street address of a residence at which he or she was known or reasonably believed to have resided.” A “homeless shelter resident” is “a person who at the time of death lived in a homeless shelter.” A “homeless shelter” is “(i) a residence operated by or on behalf of the Department of Homeless Services; (ii) an emergency residence operated by or on behalf of the Department of Social Services/Human Resources Administration which is available primarily for homeless persons with HIV or AIDS related illness; or (iii) a residence operated by or on behalf of the Department of Housing Preservation and Development to the extent that such residence houses clients of the Department of Homeless Services; provided, however that such term shall not include any residence that is available primarily for battered women.”

Methods. Based on the definitions above, incident reports were provided by OCME, DHS and HPD. Information from corresponding NYC death certificates were used to validate agency reports and remove any duplicates among them (i.e. when DHS cases are also OCME cases). HRA did not disclose any identifiable information on HRA homeless residents, per Article 27-F of the New York State Public Health Law, which prohibits disclosure of information that could reasonably identify someone as having an HIV-related illness or AIDS. As a result HRA homeless deaths cannot be combined with DHS, HPD and OCME deaths, and total NYC homeless deaths cannot be ascertained.

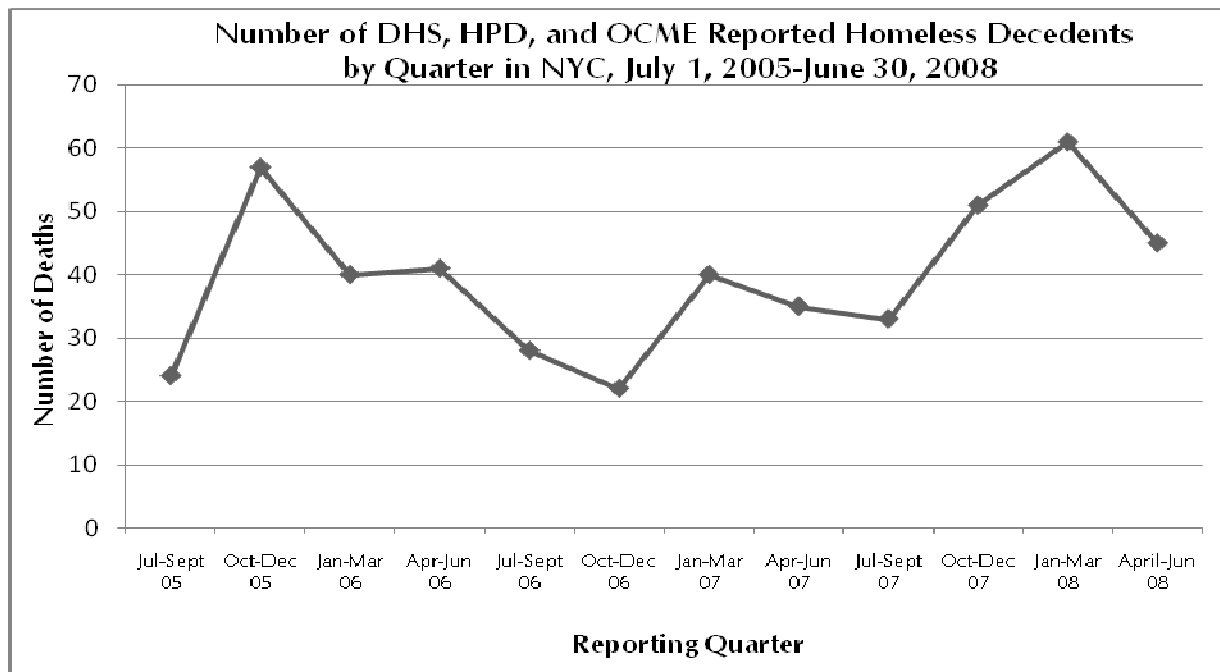
This report contains a compilation of case reports from the past 4 quarterly reports and covers the period July 1, 2007 - June 30, 2008. Case reports from the three agencies and OCME were compiled, and DHS, HDP and OCME case reports only were matched against NYC DOHMH Vital Statistics death certificates. DOHMH has followed up with agencies to obtain missing data elements for the past 4 quarters. Some reports were also later determined to be outside the bounds of the LL63 homeless case definition. In those circumstances, cases determined not to be homeless according to LL63 were removed from the annual report.

DEATHS OF HOMELESS PERSONS AND HOMELESS SHELTER RESIDENTS

Reported Homeless Deaths

DHS, HPD and OCME reported 190 homeless deaths between July 1, 2007 and June 30, 2008, the largest number of homeless deaths among the last three years of reporting, a total of 190 homeless deaths. HRA reported the fewest number of homeless deaths in the last three years with 45 homeless deaths between July 1, 2007 and June 30, 2008 (Table 2). The trend chart displays deaths reported by quarter since the inception of the report, July 1, 2005 to June 30, 2008.

Figure 1



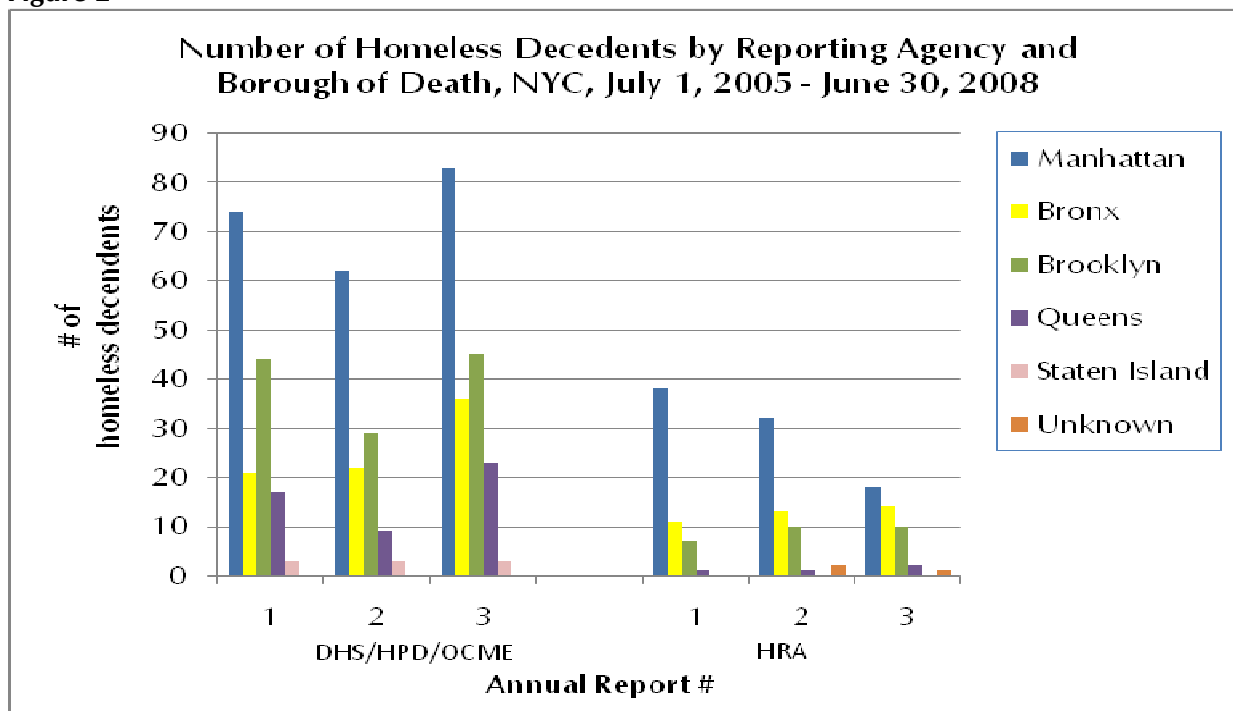
Among the 190 deaths reported by DHS, HPD, and OCME, 44% (83) occurred in Manhattan, 24% (45) in Brooklyn, 19% (36) in the Bronx, 12% (23) in Queens and 2% (3) in Staten Island (Table 2, Figure 2).

Thirty-seven percent (70) of the 190 decedents had been sheltered and 63% (120) were non-sheltered (Table 2). Among the sheltered, 37% (25) were sheltered in Manhattan, 37% (26) were sheltered in Brooklyn, 16% (11) were sheltered in the Bronx, 11% (8) were sheltered in Queens and none in Staten Island (Table 3).

Among those that were sheltered, the largest proportion, 37% (26), died in Manhattan followed by Brooklyn (33%, 23 deaths), then the Bronx (20%, 14 deaths), Queens (10%, 7 deaths), and none in Staten Island. Among non-sheltered decedents, the largest proportion, 48% (57) died in Manhattan, followed by both the Bronx and Brooklyn (18%, 22 each), Queens (13%, 16), and then Staten Island (3%, 3) (Table 2).

Similar to DHS, HPD and OCME sheltered homeless decedents, the largest proportion of HRA sheltered homeless, 40% (18), died in Manhattan. However, the Bronx followed by Brooklyn had the second and third largest proportion of deaths respectively, with 31% (14) dying in the Bronx and 22% (10) dying in Brooklyn. Four percent (2) of HRA homeless decedents died in Queens and none in Staten Island. The borough of death for the 1 (2%) remaining HRA resident was reported as unknown. The rank order of frequency of homeless deaths by borough of occurrence remains consistent over the three years of reporting regardless of reporting agency (Figure 2).

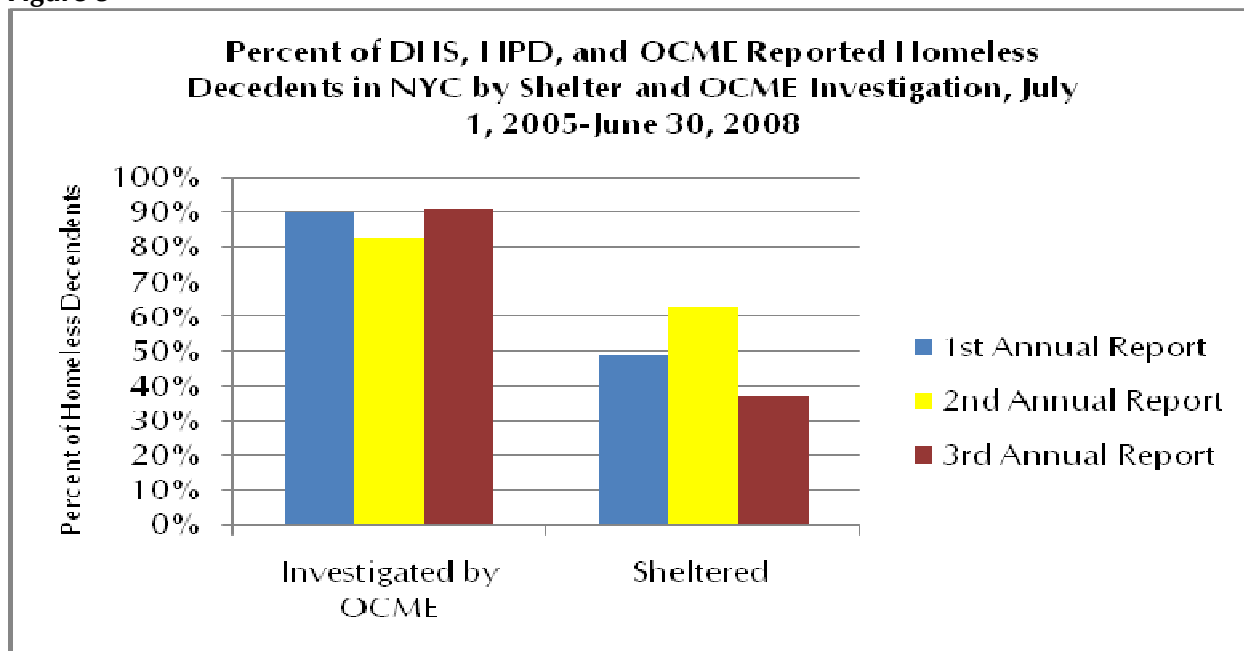
Figure 2



The majority of homeless decedents are investigated by OCME: 91% (173) in the current report; 90% (146) and 83% (104) in 1st and 2nd annual reports respectively (Figure 3). The proportion of homeless decedents that were sheltered has varied from 49% in the first report, 63% in the second and 37% in the current report. The actual number of sheltered in the 1st (79), 2nd (79) and current (70) annual reports remained almost the same. The increase in the number of deaths in the current report is among non-sheltered decedents and is described in the next section.

Among the 70 sheltered decedents, 80% (56) were investigated by OCME. Among the 120 non-sheltered decedents, all but 3 (98%) were investigated by OCME.

Figure 3



Location of Death for Homeless Decedents

The locations (i.e., in a shelter, in a hospital, outdoors, or other place) of OCME, DHS and HPD reported deaths, disaggregated by borough, community district and shelter residency status are shown in Table 4a. Categories of *outdoor* and *other place* deaths are provided in Table 1. HRA’s homeless deaths by location of death are presented separately in Table 4b by borough only, as required by LL63.

Over the last three years, the number of sheltered decedents has remained virtually constant with 79, 79 and 70 deaths reported in the 1st, 2nd and current annual report. However, non-sheltered decedents decreased between year 1 (83) and year 2 (46) and increased significantly in year 3 with 120 deaths. The largest proportion of non-sheltered deaths occurred in hospitals (45%) with 54 deaths. There were only 26 hospital deaths in year 1 and 14 in year 2 accounting for 31% and 30% of non-sheltered deaths respectively. *Other place* deaths accounted for 32.5% (39 deaths) of deaths in the current report compared to 22% (18) of deaths and 30% (14) in years 1 and 2 respectively. These include a friend’s apartment, subway platform/train station, abandoned building, and a public space in a building. *Outdoor* deaths accounted for 22.5% (27 deaths) of deaths in the current report compared to 47% (39 deaths) and 39% (18 deaths) in years 1 and 2 respectively. These include the sidewalk/street, expressway, building entrance, park area, encampment, vehicle, vacant lot, and bank/shore of or in a body of water (Table 1).

The proportional increase in hospital deaths may be an artifact of reporting location of death. When DHS and/or OCME investigator reports indicate that the decedent was declared dead at the shelter, *outdoors* or *other place* and then transferred to the hospital, location of death is reported as shelter, *outdoors* or *other place* respectively. If the investigative report indicates that the decedent was found in the shelter, *outdoors* or at an *other place* and declared dead at the hospital, then the location of death is reported as hospital. Further investigation into these deaths is required to explain the increase in non-sheltered deaths.

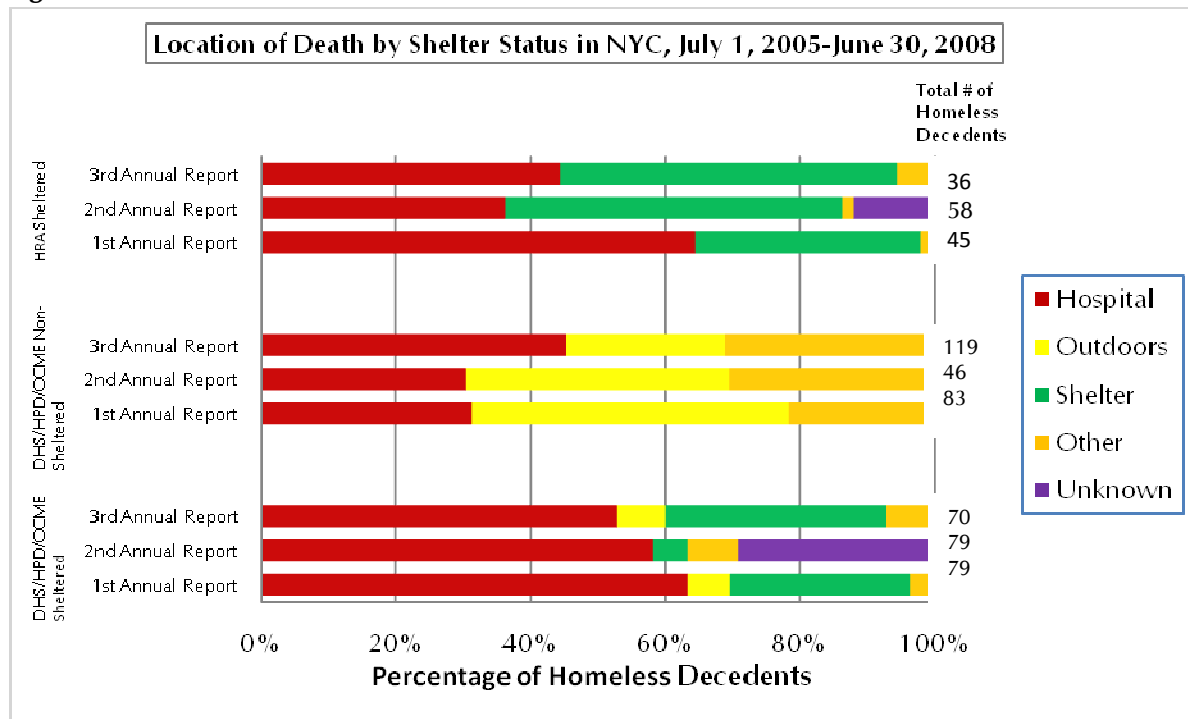
Non-sheltered homeless decedents found outdoors were found in park areas, encampments, in or near a body of water, in a vacant lot, in a vehicle, or on the sidewalk or street (Table 4a). Deaths of

those found outdoors were due to exposure, heart disease, overdose, drowning as well as other causes. Those found in *other place* were found in abandoned buildings, public spaces in buildings, apartments of friends or family, or at or near subway or train stations (Table 4a). These deaths were due to heart disease, overdose, accidents, as well as other causes.

Among the remaining sheltered decedents, 33% (23) died in a shelter, 7% (5) died outdoors and 7% (5) in *other place*. Of the 5 sheltered decedents that died outdoors, 2 were found on the bank or shore or in a body of water and died from drowning or submersion with undetermined intent; 3 were found on the sidewalk or street: 1 died of alcohol abuse, 1 died of an overdose, 1 was a homicide. Among the 5 sheltered decedents that died in *other place*, 3 died from an overdose and were found at friend's apartments and 2 died in subway trains accidents and were found on a subway platform or train station.

Among the 45 HRA reported homeless decedents, the largest proportion, 40% (18), died in shelters followed by hospitals, 36% (16). The location of death for remaining 11 (24%) were reported as other (2) or unknown (9).

Figure 4

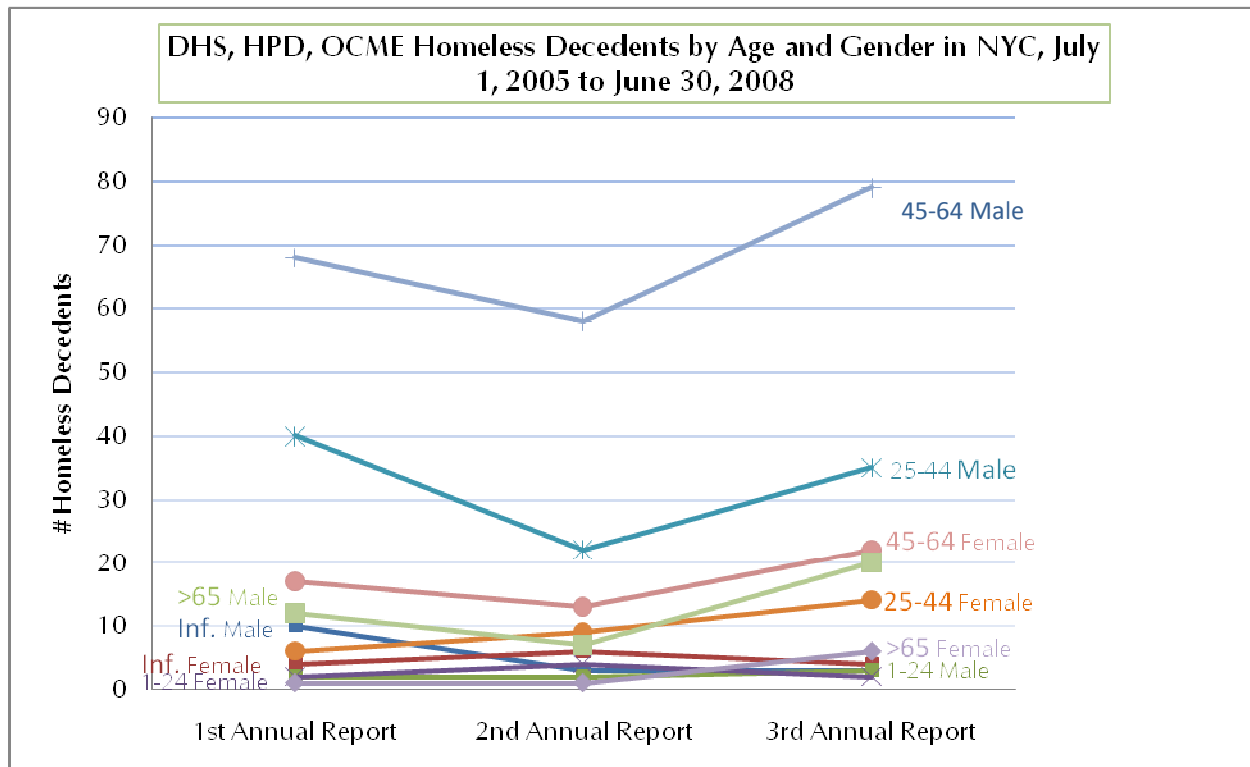


Homeless Decedents’ Age and Gender by Borough and Community District

Males between the ages of 45 and 64, followed by males between the ages of 25 and 44, then females between the ages of 45 and 64 have made up the three largest age groups of homeless decedents in the 1st, 2nd and current annual report. In the current report, males between the ages of 45 and 64 make up 42% of homeless decedents followed by males between the ages of 25-44 (18%), females between the ages of 45 to 64 (12%), then males > 65 (11%) and females between 25 and 44 (7%). Infants account for 4%; children between the ages of 1 and 24 account for 3% as do females homeless decedents ≥ 65. The age and gender distribution by borough and community district is found in Table 5a.

Among the 45 HRA homeless deaths, 31 (69%) were male and 14 (31%) were female. Ten (22%) were between 25 and 44 years, 33 (73%) were between 45 and 64 years, and 2 (4%) were 65 and over. These distributions have remained comparable over the three years of reporting. The age and gender distribution by borough is found in Table 5b.

Figure 5

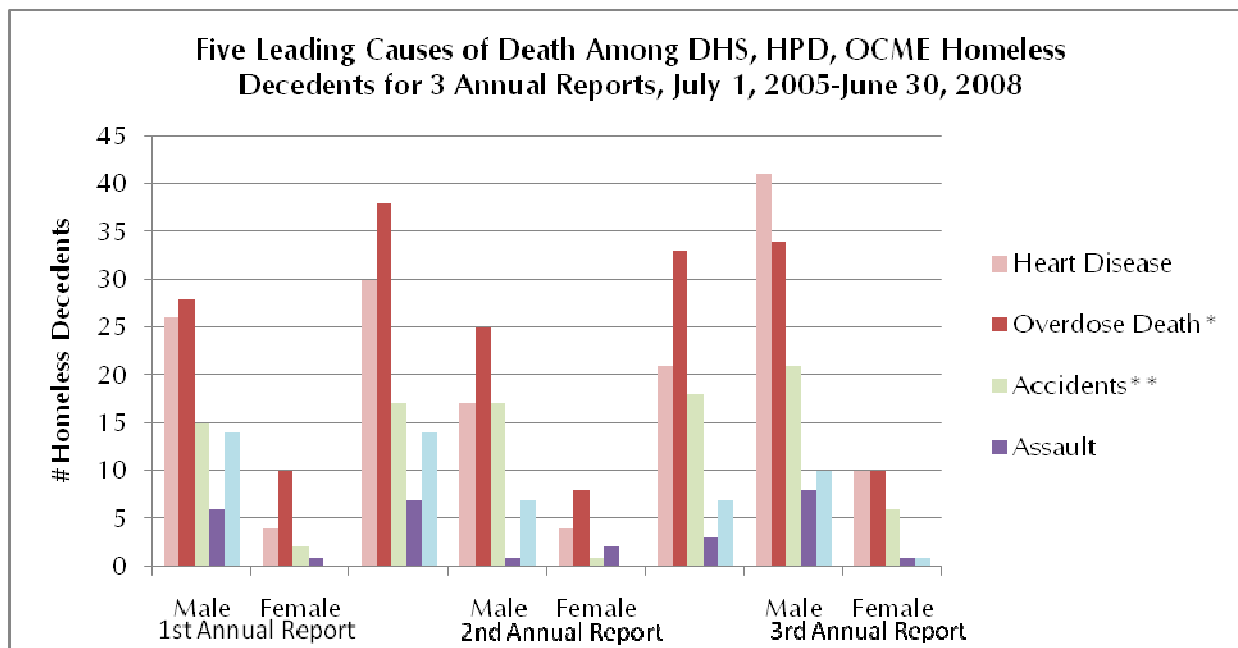


DHS, HPD, and OCME Homeless Decedents by Leading Cause of Death

In the current annual report, the 5 leading causes of death accounted for 74% of all homeless deaths. Heart disease accounted for 27% (51 deaths: 41 male and 10 female) of deaths; overdose deaths accounted for 23% (43 deaths: 34 male and 9 female) of deaths; accidents accounted for 14% (27 deaths: 21 males and 6 female) of deaths; assault (homicide) accounted for 5% (9 deaths: 8 males and 1 female) of deaths and mental and behavioral disorders due to use of alcohol, also referred to as alcohol abuse, accounted for 5% (10 deaths: 9 male and one female) of deaths. The overdose death category includes accidental and intentional overuse, or abuse of, illicit and/or therapeutic drugs. Mental and behavioral disorders – used to define overdose deaths and alcohol abuse – encompass acute intoxication, harmful use, dependence syndrome, and withdrawal state (Table 6a).

The leading causes of homeless death continues to vary from NYC’s 5 leading causes of death: In 2007 heart disease (40%) was the leading cause followed by malignant neoplasms (25%), influenza and pneumonia, (4%), cerebrovascular diseases, (3%), and diabetes mellitus (3%). Overdose death was the leading cause of homeless death followed by heart disease in the first two years of reporting compared to heart disease followed by overdose death in the current report. Accidents remain the third and alcohol abuse remains the fourth leading cause of death; this year alcohol abuse tied with homicide as the fourth leading causes of death. Homicide had ranked fifth in the 1st annual report and was not among the 5 leading causes in the 2nd annual report. Chronic lower respiratory diseases was not among the 5 leading causes in the 1st annual report and ranked fifth in the 2nd. Leading cause of death information is found in Tables 6a to c.

Figure 6



* Mental and Behavior Disorders Due to the Use of, or Accidental Poisoning by, Psychoactive Substances Excluding Alcohol and Tobacco

** Excluding Accidental Drug Overdose

***Mental and Behavioral Disorders due to the Use of Alcohol

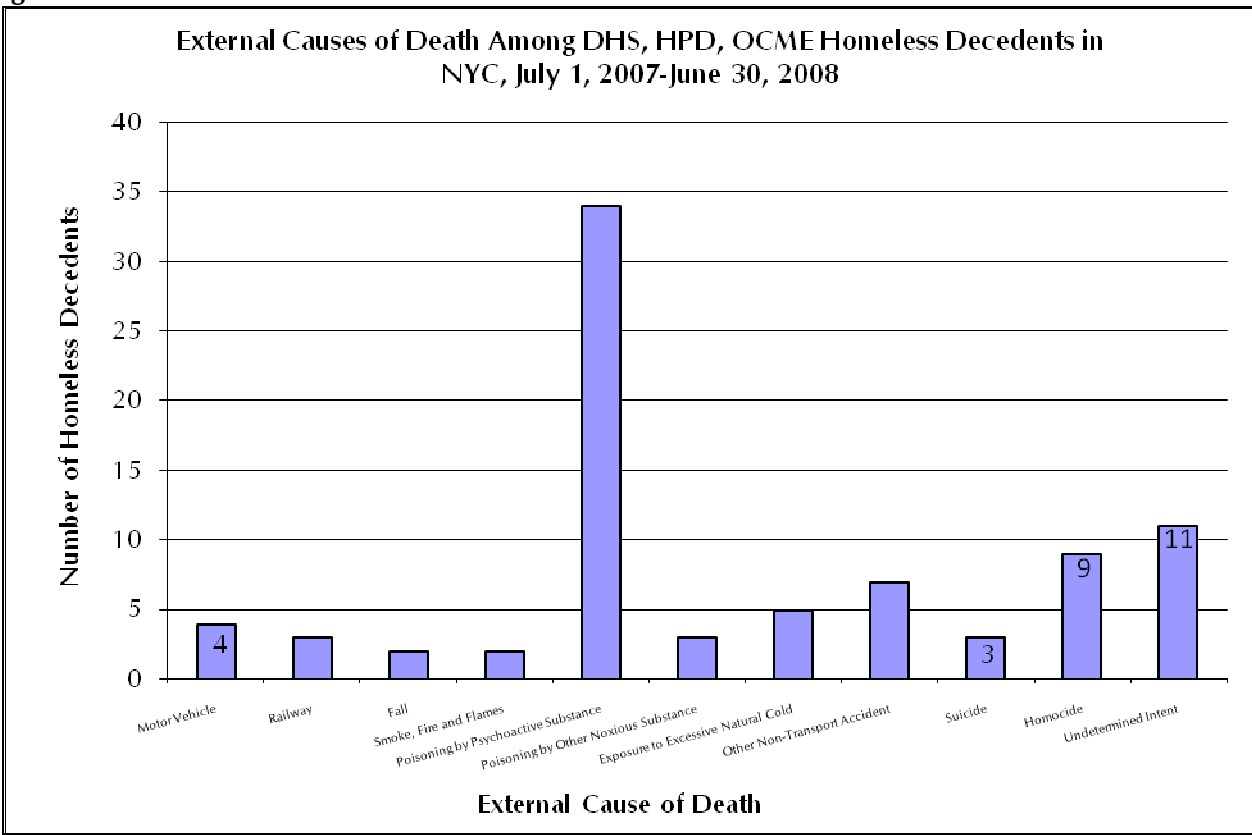
The rank order of leading causes of death among male homeless decedents has been the same as the overall homeless cause of death ranking (Figure 7) in all three years of reporting; the rank order for female homeless decedents – making up a smaller proportion of all homeless deaths - differs. Female homeless decedents died from heart disease (10), followed by overdose (9), then accidents (6). Three causes tied for the fourth leading cause of death with 2 deaths from each of the following causes: malignant neoplasm, influenza and pneumonia, human immunodeficiency virus disease, and septicemia (Table 6a).

The 5 leading causes of death vary by decedent shelter status. Among sheltered homeless decedents, the top 5 leading causes of death were overdose deaths (20), followed by heart disease (18), accidents (7), cancer (3), and influenza and pneumonia (3). Among non-sheltered homeless, the top 5 leading causes of death were heart disease (33), followed by overdose deaths (23), accidents (20), alcohol abuse (9) and assault (homicide) (7). (Figure 8; Table 6b).

External Causes of Death among DHS, HPD, and OCME Homeless Persons

Forty-six, 35 and 83 external causes of death are reported in the 1st, 2nd and current annual report. Among the 83 reported in this annual report, 34 (41%) were due to poisoning by psychoactive substance. This large increase in the number of external causes in the current year's data is attributable to a 2007 correction in cause of death coding. Prior to 2007, the manner of some overdose deaths were miscoded as "natural" rather than "accidental", undercounting those due to external causes. See Special Section: New York City Changes from Manual to Automated Cause-of-Death Coding: <http://www.nyc.gov/html/doh/downloads/pdf/vs/2007sum.pdf>. Current numbers more accurately reflect the number of deaths due to external causes. Among the 83 external causes, 9 (11%) were due to assault (homicide), 7 (8%) were due to other non-transport accidents, and 5 (6%) were due to exposure to excessive natural cold. Eleven (13%) were due to external causes of undetermined intent (i.e. there was insufficient information to ascertain the manner of death). Among those where manner of death was undetermined, but cause was known (5), 2 were caused by drowning and submersion, 2 by exposure to smoke, fire, and flames and 1 due to falling, jumping, or being pushed from a high place. All five deaths caused by exposure to cold occurred between January 1, 2008 and March 30, 2008; these individuals were between the ages of 38 and 70. Three were found dead in Queens, and 2 in Manhattan. Two were found in parks outside a building, 1 was found in a building entrance, 1 was found in an abandoned buildings, and 1 was found on the street.

Figure 7



Note: This large increase in the number of external causes in the current year’s data is a result of the increase in the number of poisoning by psychoactive substance categorized as an external cause. This increase is attributable to a 2007 correction in cause of death coding. Prior to 2007, the manner of some overdose deaths were miscoded as natural rather than accidental, underestimating those due to external causes. See Special Section: New York City Changes from Manual to Automated Cause-of-Death Coding: <http://www.nyc.gov/html/doh/downloads/pdf/vs/2007sum.pdf>.

Deaths Among DHS, HPD, and OCME Homeless Infants

In the last three years of reporting, there were 30 homeless infant deaths reported. All but one was sheltered (the one non-sheltered infant was reported in the 1st annual report); all but one was investigated by OCME; (the one was a natural death due to congenital malformations and deformations). Among the 7 reported in this current report, 2 died of an external cause - accidental suffocation, 1 died of bronchopneumonia, 1 of coarction of the aorta, 1 of septicemia, and 2 died due to unspecified causes.

Comments

In this annual report, we indicate that there were 190 homeless deaths, the largest number of homeless deaths reported in three years compared to 162 and 125 reported in the first two annual reports. The majority of deaths (61) in the 3rd annual report occurred during the 11th quarter (January 1, 2008 to March 31, 2008). This is the highest number yet documented for any one quarter. We also report the fewest number of sheltered decedents in the last three years; 70 sheltered decedents compared to 79 in the two prior reports.

The increase in the number of deaths was among non-sheltered homeless. There were 83 and 46 non-sheltered homeless deaths in the first two years of reporting respectively, compared to 120 in the current year. The majority of these deaths occurred in the hospital rather than *outdoors* or in some *other place*. Further investigation into the location of death by cause is necessary to determine the causes that dominate this sub-population. These analyses are pending due to changes that must be made to the datasets of Annual Reports 1 and 2 datasets. These analyses will be included as a supplement to 14th quarterly report due to be published on April 1st.

Heart disease overtook overdose deaths as the leading cause of death with 51 (27%) homeless deaths. Heart disease was the leading cause of death among male (10 deaths) and female (6 deaths) decedents. Accident continues to rank as the third leading cause.

While overdose deaths moved to the second leading cause of death, the distribution of natural vs. external overdose deaths has changed due to a 2007 correction in NYC's cause of death coding (See Special Section: New York City Changes from Manual to Automated Cause-of-Death Coding: <http://www.nyc.gov/html/doh/downloads/pdf/vs/2007sum.pdf>). While previous reports accurately reported the number of overdose deaths, those non-intentional overdoses were over-counted in previous reports. As a result, we have a better estimate of the overall number of external deaths and the proportion of external deaths that are due to overdose (Figure 9).

Table 1: LL63 Categories for Classifying Deaths

Outdoor Deaths	Other Place Deaths
Sidewalk/Street	Friend's Apartment
Expressway	Subway Platform/Train Station
Building Entrance	Abandoned Building
Park Area	Public Space in a Building
Encampment	
Vehicle	
Vacant Lot	
Bank/Shore of or in Body of Water	

* In the 1st annual report, subway and train deaths were categorized as outdoor; this was changed in the 2nd annual report based on discussions between agencies reporting these deaths

Table 2: Homeless Decedents by Agency, Shelter Residency Status, OCME Investigation, and Borough

Table 2: Deaths of Homeless Persons by Shelter Residency Status and Borough of Death, Jul. 1, 2007 - Jun. 30, 2008	Deaths Reported by OCME, DHS, and HPD									Deaths Reported by HRA*		
	Total			Shelter Residency Status						Total	Shelter Residency Status	
	All	OCME	Non-OCME	Sheltered			Non-Sheltered				Sheltered	Non-Sheltered
				All	OCME	Non-OCME	All	OCME	Non-OCME			
New York City	190	173	17	70	56	14	120	117	3	45	45	0
Manhattan	83	76	7	26	20	6	57	56	1	18	18	0
Bronx	36	32	4	14	12	2	22	20	2	14	14	0
Brooklyn	45	39	6	23	17	6	22	22	0	10	10	0
Queens	23	23	0	7	7	0	16	16	0	2	2	0
Staten Island	3	3	0	0	0	0	3	3	0	0	0	0
Borough Unknown	0	0	0	0	0	0	0	0	0	1	1	0

* All HRA deaths occurred to homeless placed in Single Room Occupancy (SRO). SROs are not considered homeless shelters by HRA, but they are included in this report because they are homeless shelter residents according to Local Law No. 63 of 2005 (codified at New York City Administrative Code Section 17-190) definitions #2 Homeless shelter resident and #3 Homeless shelter were classified as homeless sheltered residents. See: <http://webdocs.nycouncil.info/attachments/66681.htm>

HRA homeless sheltered deaths are reported separately and should not be added to other homeless sheltered deaths as there may be duplication. To comply with Article 27-F of the New York state Public Health Law which prohibits disclosure of any information that could reasonably identify someone having an HIV related illness or AIDS, personal identifiers on HRA homeless deaths were not provided; hence corresponding death certificates could not be reviewed to determine whether deaths were also reported by OCME.

Table 3: Sheltered Homeless Decedents by Shelter Location

Table 3: Shelter Locations of Sheltered Homeless Decedents by Borough and Community District of Shelter, Jul.1,2007 - Jun.30,2008		Deaths of Sheltered Homeless Persons Reported by OCME, DHS, and HPD
New York City		70
Manhattan	Total	25
	Battery Park, Tribeca (01)	0
	Greenwich Village, SOHO (02)	0
	Lower East Side (03)	4
	Chelsea, Clinton (04)	0
	Midtown Business District (05)	0
	Murray Hill (06)	5
	Upper West Side (07)	2
	Upper East Side (08)	0
	Manhattanville (09)	1
	Central Harlem (10)	2
	East Harlem (11)	11
	Washington Heights (12)	0
Bronx	Total	11
	Mott Haven (01)	1
	Hunts Point (02)	1
	Morrisania (03)	3
	Concourse, Highbridge (04)	2
	University/Morris Heights (05)	0
	East Tremont (06)	3
	Fordham (07)	0
	Riverdale (08)	1
	Unionport, Soundview (09)	0
	Throgs Neck (10)	0
	Pelham Parkway (11)	0
Williamsbridge (12)	0	

Table 3: Shelter Locations of Sheltered Homeless Decedents by Borough and Community District of Shelter, Jul.1,2007 - Jun.30,2008		Deaths of Sheltered Homeless Persons Reported by OCME, DHS, and HPD
Brooklyn	Total	26
	Williamsburg, Greenpoint (01)	2
	Fort Greene, Brooklyn Heights (02)	1
	Bedford Stuyvesant (03)	1
	Bushwick (04)	2
	East New York (05)	5
	Park Slope (06)	0
	Sunset Park (07)	0
	Crown Heights North (08)	7
	Crown Heights South (09)	0
	Bay Ridge (10)	0
	Bensonhurst (11)	0
	Borough Park (12)	0
	Coney Island (13)	0
	Flatbush, Midwood (14)	0
	Sheepshead Bay (15)	0
	Brownsville (16)	4
	East Flatbush (17)	0
Canarsie (18)	4	

Table 3: Shelter Locations of Sheltered Homeless Decedents by Borough and Community District of Shelter, Jul.1,2007 - Jun.30,2008		Deaths of Sheltered Homeless Persons Reported by OCME, DHS, and HPD
Queens	Total	8
	Astoria, Long Island City (01)	0
	Sunnyside, Woodside (02)	2
	Jackson Heights (03)	0
	Elmhurst, Corona (04)	0
	Ridgewood, Glendale (05)	0
	Rego Park, Forest Hills (06)	0
	Flushing (07)	0
	Fresh Meadows, Briarwood (08)	0
	Woodhaven (09)	0
	Howard Beach (10)	0
	Bayside (11)	0
	Jamaica, St. Albans (12)	5
	Queens Village (13)	1
The Rockaways (14)	0	
Staten Island	Total	0
	Port Richmond (01)	0
	Willowbrook, South Beach (02)	0
	Tottenville (03)	0

Tables 4a and 4b: Homeless Decedents by Location of Death: Shelter, Hospital, Outdoors, or *Other place*

Table 4a: Deaths of Homeless Persons by Shelter Residency Status Location, Borough, and Community District of Death, Jul.1,2007 - Jun.30,2008		Deaths Reported by OCME, DHS, and HPD														
		Total					Shelter Residency Status									
							Sheltered					Non-Sheltered				
		Location of Death					Location of Death					Location of Death				
Total	Shelter	Hospital	Outdoors	Other	Total	Shelter	Hospital	Outdoors	Other	Total	Shelter	Hospital	Outdoors	Other		
New York City		190	23	91	32	44	70	23	37	5	5	120	0	54	27	39
Manhattan	Total	83	4	53	12	14	26	4	16	4	2	57	0	37	8	12
	Battery Park, Tribeca (01)	5	0	4	0	1	0	0	0	0	0	5	0	4	0	1
	Greenwich Village, SOHO (02)	8	0	7	1	0	0	0	0	0	0	8	0	7	1	0
	Lower East Side (03)	6	1	2	0	3	3	1	2	0	0	3	0	0	0	3
	Chelsea, Clinton (04)	7	0	7	0	0	0	0	0	0	0	7	0	7	0	0
	Midtown Business District (05)	2	0	0	1	1	0	0	0	0	0	2	0	0	1	1
	Murray Hill (06)	13	1	11	1	0	4	1	3	0	0	9	0	8	1	0
	Upper West Side (07)	0	0	0	0	0	0	0	0	0	0	0	0	0	0	0
	Upper East Side (08)	6	0	3	2	1	1	0	1	0	0	5	0	2	2	1
	Manhattanville (09)	9	0	5	2	2	2	0	0	1	1	7	0	5	1	1
	Central Harlem (10)	6	1	3	0	2	2	1	0	0	1	4	0	3	0	1
	East Harlem (11)	17	1	8	5	3	11	1	7	3	0	6	0	1	2	3
Washington Heights (12)	4	0	3	0	1	3	0	3	0	0	1	0	0	0	1	

Table 4a: Deaths of Homeless Persons by Shelter Residency Status Location, Borough, and Community District of Death, Jul.1,2007 - Jun.30,2008		Deaths Reported by OCME, DHS, and HPD														
		Total					Shelter Residency Status									
							Sheltered					Non-Sheltered				
		Location of Death					Location of Death					Location of Death				
Total	Shelter	Hospital	Outdoors	Other	Total	Shelter	Hospital	Outdoors	Other	Total	Shelter	Hospital	Outdoors	Other		
Bronx	Total	36	6	11	7	12	14	6	5	0	3	22	0	6	7	9
	Mott Haven (01)	6	0	3	1	2	1	0	0	0	1	5	0	3	1	1
	Hunts Point (02)	2	1	0	0	1	1	1	0	0	0	1	0	0	0	1
	Morrisania (03)	5	2	0	0	3	2	2	0	0	0	3	0	0	0	3
	Concourse, Highbridge (04)	5	1	2	1	1	3	1	2	0	0	2	0	0	1	1
	University/Morris Heights (05)	2	0	0	1	1	0	0	0	0	0	2	0	0	1	1
	East Tremont (06)	4	1	1	1	1	2	1	1	0	0	2	0	0	1	1
	Fordham (07)	3	0	2	0	1	2	0	1	0	1	1	0	1	0	0
	Riverdale (08)	2	1	0	0	1	1	1	0	0	0	1	0	0	0	1
	Unionport, Soundview (09)	1	0	0	1	0	0	0	0	0	0	1	0	0	1	0
	Throgs Neck (10)	0	0	0	0	0	0	0	0	0	0	0	0	0	0	0
	Pelham Parkway (11)	4	0	3	1	0	1	0	1	0	0	3	0	2	1	0
	Williamsbridge (12)	2	0	0	1	1	1	0	0	0	1	1	0	0	1	0

Table 4a: Deaths of Homeless Persons by Shelter Residency Status Location, Borough, and Community District of Death, Jul.1,2007 - Jun.30,2008		Deaths Reported by OCME, DHS, and HPD														
		Total					Shelter Residency Status									
							Sheltered					Non-Sheltered				
		Location of Death					Location of Death					Location of Death				
Total	Shelter	Hospital	Outdoors	Other	Total	Shelter	Hospital	Outdoors	Other	Total	Shelter	Hospital	Outdoors	Other		
Brooklyn	Total	45	9	22	4	10	23	9	14	0	0	22	0	8	4	10
	Unionport, Soundview (09)	1	0	0	0	1	0	0	0	0	0	1	0	0	0	1
	Williamsburg, Greenpoint (01)	2	1	0	1	0	1	1	0	0	0	1	0	0	1	0
	Fort Greene, Brooklyn Heights (02)	5	1	4	0	0	3	1	2	0	0	2	0	2	0	0
	Bedford Stuyvesant (03)	7	0	6	0	1	3	0	3	0	0	4	0	3	0	1
	Bushwick (04)	2	1	0	0	1	1	1	0	0	0	1	0	0	0	1
	East New York (05)	2	2	0	0	0	2	2	0	0	0	0	0	0	0	0
	Park Slope (06)	4	0	1	1	2	0	0	0	0	0	4	0	1	1	2
	Sunset Park (07)	0	0	0	0	0	0	0	0	0	0	0	0	0	0	0
	Crown Heights North (08)	2	2	0	0	0	2	2	0	0	0	0	0	0	0	0
	Crown Heights South (09)	4	0	4	0	0	2	0	2	0	0	2	0	2	0	0
	Bay Ridge (10)	0	0	0	0	0	0	0	0	0	0	0	0	0	0	0
	Bensonhurst (11)	0	0	0	0	0	0	0	0	0	0	0	0	0	0	0
	Borough Park (12)	0	0	0	0	0	0	0	0	0	0	0	0	0	0	0
	Coney Island (13)	3	0	0	1	2	0	0	0	0	0	3	0	0	1	2
	Flatbush, Midwood (14)	0	0	0	0	0	0	0	0	0	0	0	0	0	0	0
	Sheepshead Bay (15)	1	0	0	0	1	0	0	0	0	0	1	0	0	0	1
	Brownsville (16)	1	0	0	1	0	0	0	0	0	0	1	0	0	1	0
	East Flatbush (17)	8	0	7	0	1	7	0	7	0	0	1	0	0	0	1
Canarsie (18)	3	2	0	0	1	2	2	0	0	0	1	0	0	0	1	

Table 4a: Deaths of Homeless Persons by Shelter Residency Status Location, Borough, and Community District of Death, Jul.1,2007 - Jun.30,2008		Deaths Reported by OCME, DHS, and HPD														
		Total					Shelter Residency Status									
							Sheltered					Non-Sheltered				
		Location of Death					Location of Death					Location of Death				
Total	Shelter	Hospital	Outdoors	Other	Total	Shelter	Hospital	Outdoors	Other	Total	Shelter	Hospital	Outdoors	Other		
Queens	Total	23	4	5	9	5	7	4	2	1	0	16	0	3	8	5
	Astoria, Long Island City (01)	0	0	0	0	0	0	0	0	0	0	0	0	0	0	0
	Sunnyside, Woodside (02)	1	1	0	0	0	1	1	0	0	0	0	0	0	0	0
	Jackson Heights (03)	0	0	0	0	0	0	0	0	0	0	0	0	0	0	0
	Elmhurst, Corona (04)	3	0	0	2	1	0	0	0	0	0	3	0	0	2	1
	Ridgewood, Glendale (05)	1	0	0	1	0	0	0	0	0	0	1	0	0	1	0
	Rego Park, Forest Hills (06)	2	0	1	1	0	0	0	0	0	0	2	0	1	1	0
	Flushing (07)	1	0	1	0	0	1	0	1	0	0	0	0	0	0	0
	Fresh Meadows, Briarwood (08)	0	0	0	0	0	0	0	0	0	0	0	0	0	0	0
	Woodhaven (09)	1	0	0	1	0	0	0	0	0	0	1	0	0	1	0
	Howard Beach (10)	2	0	0	0	2	0	0	0	0	0	2	0	0	0	2
	Bayside (11)	0	0	0	0	0	0	0	0	0	0	0	0	0	0	0
	Jamaica, St. Albans (12)	11	3	3	3	2	5	3	1	1	0	6	0	2	2	2
	Queens Village (13)	0	0	0	0	0	0	0	0	0	0	0	0	0	0	0
The Rockaways (14)	1	0	0	1	0	0	0	0	0	0	1	0	0	1	0	
Staten Island	Total	3	0	0	0	3	0	0	0	0	0	3	0	0	0	3
	Port Richmond (01)	2	0	0	0	2	0	0	0	0	0	2	0	0	0	2
	Willowbrook, South Beach (02)	1	0	0	0	1	0	0	0	0	0	1	0	0	0	1
	Tottenville (03)	0	0	0	0	0	0	0	0	0	0	0	0	0	0	0

Table 4b: Deaths of Homeless Persons by Shelter Residency Status, Location, and Borough of Death, Jul.1,2007 - Jun.30,2008	Deaths Reported by HRA*					
	Sheltered					
	Location of Death					
	Total	Shelter	Hospital	Outdoors	Other Place	Unknown
New York City	45	18	16	0	2	9
Manhattan	18	12	6	0	0	0
Bronx	14	4	6	0	0	4
Brooklyn	10	2	3	0	1	4
Queens	2	0	1	0	0	1
Staten Island	0	0	0	0	0	0
Borough Unknown	1	0	0	0	1	0

*All HRA deaths occurred to homeless placed in Single Room Occupancy (SRO). While SROs are not homeless shelters, these decedents had been provided with temporary emergency housing and as such and according to Local Law No. 63 of 2005 (codified at New York City Administrative Code Section 17-190) definitions #2 Homeless shelter resident and #3 Homeless shelter were classified as homeless sheltered residents. See: <http://webdocs.nycouncil.info/attachments/66681.htm>

Tables 5a and 5b: Homeless Decedents by Age and Sex

Table 5a: Deaths of Homeless Persons by Sex, Age, Borough, and Community District of Death, Jul.1,2007 - Jun.30,2008	Deaths Reported by OCME, DHS, and HPD																			
	Total							Male							Female					
	Age							Age							Age					
	Total	Inf.	1-24	25-44	45-64	>=65	Unk.	Total	Inf.	1-24	25-44	45-64	>=65	Unk.	Total	Inf.	1-24	25-44	45-64	>=65
New York City	190	7	5	49	101	26	2	142	3	3	35	79	20	2	48	4	2	14	22	6

Table 5a: Deaths of Homeless Persons by Sex, Age, Borough, and Community District of Death, Jul. 1, 2007 - Jun. 30, 2008		Deaths Reported by OCME, DHS, and HPD																				
		Total							Male							Female						
		Age							Age							Age						
		Total	Inf.	1-24	25-44	45-64	>=65	Unk.	Total	Inf.	1-24	25-44	45-64	>=65	Unk.	Total	Inf.	1-24	25-44	45-64	>=65	
Manhattan	Total	83	1	3	19	47	12	1	70	1	2	14	42	10	1	13	0	1	5	5	2	
	Battery Park, Tribeca (01)	5	0	0	0	4	1	0	4	0	0	0	3	1	0	1	0	0	0	1	0	
	Greenwich Village, SOHO (02)	8	0	0	4	1	3	0	6	0	0	2	1	3	0	2	0	0	2	0	0	
	Lower East Side (03)	6	0	0	0	4	2	0	6	0	0	0	4	2	0	0	0	0	0	0	0	
	Chelsea, Clinton (04)	7	0	0	1	5	1	0	7	0	0	1	5	1	0	0	0	0	0	0	0	
	Midtown Business District (05)	2	0	0	1	1	0	0	2	0	0	1	1	0	0	0	0	0	0	0	0	0
	Murray Hill (06)	13	1	0	2	8	2	0	11	1	0	2	7	1	0	2	0	0	0	1	1	
	Upper West Side (07)	0	0	0	0	0	0	0	0	0	0	0	0	0	0	0	0	0	0	0	0	0
	Upper East Side (08)	6	0	0	1	2	2	1	5	0	0	1	2	1	1	1	0	0	0	0	1	
	Manhattanville (09)	9	0	2	3	4	0	0	8	0	2	2	4	0	0	1	0	0	1	0	0	
	Central Harlem (10)	6	0	0	3	3	0	0	5	0	0	2	3	0	0	1	0	0	1	0	0	
	East Harlem (11)	17	0	0	3	13	1	0	15	0	0	2	12	1	0	2	0	0	1	1	0	
	Washington Heights (12)	4	0	1	1	2	0	0	1	0	0	1	0	0	0	3	0	1	0	2	0	
Bronx	Total	36	1	1	12	15	6	1	28	1	1	9	12	4	1	8	0	0	3	3	2	
	Mott Haven (01)	6	0	0	1	3	2	0	5	0	0	1	2	2	0	1	0	0	0	1	0	
	Hunts Point (02)	2	0	0	1	1	0	0	1	0	0	0	1	0	0	1	0	0	1	0	0	
	Morrisania (03)	5	0	0	2	2	1	0	4	0	0	1	2	1	0	1	0	0	1	0	0	
	Concourse, Highbridge (04)	5	1	0	2	2	0	0	4	1	0	1	2	0	0	1	0	0	1	0	0	
	University/Morris Heights (05)	2	0	0	0	2	0	0	1	0	0	0	1	0	0	1	0	0	0	1	0	
	East Tremont (06)	4	0	0	1	1	1	1	2	0	0	1	0	0	1	2	0	0	0	1	1	
	Fordham (07)	3	0	0	1	1	1	0	3	0	0	1	1	1	0	0	0	0	0	0	0	
	Riverdale (08)	2	0	0	1	0	1	0	1	0	0	1	0	0	0	1	0	0	0	0	1	
	Unionport, Soundview (09)	1	0	0	1	0	0	0	1	0	0	1	0	0	0	0	0	0	0	0	0	
	Throgs Neck (10)	0	0	0	0	0	0	0	0	0	0	0	0	0	0	0	0	0	0	0	0	
	Pelham Parkway (11)	4	0	1	0	3	0	0	4	0	1	0	3	0	0	0	0	0	0	0	0	
	Williamsbridge (12)	2	0	0	2	0	0	0	2	0	0	2	0	0	0	0	0	0	0	0	0	

NYC Local Law 63: Reporting Deaths Of Homeless Persons, Annual 3 (July 1, 2007 – June 30, 2008)

Table 5a: Deaths of Homeless Persons by Sex, Age, Borough, and Community District of Death, Jul. 1, 2007 - Jun. 30, 2008		Deaths Reported by OCME, DHS, and HPD																			
		Total							Male							Female					
		Age							Age							Age					
		Total	Inf.	1-24	25-44	45-64	>=65	Unk.	Total	Inf.	1-24	25-44	45-64	>=65	Unk.	Total	Inf.	1-24	25-44	45-64	>=65
Brooklyn	Total	45	5	0	11	24	5	0	28	1	0	7	16	4	0	17	4	0	4	8	1
	Unionport, Soundview (09)	1	0	0	1	0	0	0	1	0	0	1	0	0	0	0	0	0	0	0	0
	Williamsburg, Greenpoint (01)	2	0	0	2	0	0	0	1	0	0	1	0	0	0	1	0	0	1	0	0
	Fort Greene, Brooklyn Heights (02)	5	0	0	1	3	1	0	3	0	0	1	1	1	0	2	0	0	0	2	0
	Bedford Stuyvesant (03)	7	1	0	2	4	0	0	6	1	0	2	3	0	0	1	0	0	0	1	0
	Bushwick (04)	2	0	0	0	2	0	0	2	0	0	0	2	0	0	0	0	0	0	0	0
	East New York (05)	2	0	0	1	1	0	0	1	0	0	0	1	0	0	1	0	0	1	0	0
	Park Slope (06)	4	0	0	0	3	1	0	3	0	0	0	2	1	0	1	0	0	0	1	0
	Sunset Park (07)	0	0	0	0	0	0	0	0	0	0	0	0	0	0	0	0	0	0	0	0
	Crown Heights North (08)	2	0	0	1	1	0	0	0	0	0	0	0	0	0	2	0	0	1	1	0
	Crown Heights South (09)	4	0	0	1	2	1	0	2	0	0	0	1	1	0	2	0	0	1	1	0
	Bay Ridge (10)	0	0	0	0	0	0	0	0	0	0	0	0	0	0	0	0	0	0	0	0
	Bensonhurst (11)	0	0	0	0	0	0	0	0	0	0	0	0	0	0	0	0	0	0	0	0
	Borough Park (12)	0	0	0	0	0	0	0	0	0	0	0	0	0	0	0	0	0	0	0	0
	Coney Island (13)	3	0	0	1	0	2	0	2	0	0	1	0	1	0	1	0	0	0	0	1
	Flatbush, Midwood (14)	0	0	0	0	0	0	0	0	0	0	0	0	0	0	0	0	0	0	0	0
	Sheepshead Bay (15)	1	0	0	0	1	0	0	1	0	0	0	1	0	0	0	0	0	0	0	0
	Brownsville (16)	1	0	0	0	1	0	0	1	0	0	0	1	0	0	0	0	0	0	0	0
East Flatbush (17)	8	3	0	1	4	0	0	4	0	0	1	3	0	0	4	3	0	0	1	0	
Canarsie (18)	3	1	0	0	2	0	0	1	0	0	0	1	0	0	2	1	0	0	1	0	

Table 5a: Deaths of Homeless Persons by Sex, Age, Borough, and Community District of Death, Jul.1,2007 - Jun.30,2008		Deaths Reported by OCME, DHS, and HPD																			
		Total							Male							Female					
		Age							Age							Age					
		Total	Inf.	1-24	25-44	45-64	>=65	Unk.	Total	Inf.	1-24	25-44	45-64	>=65	Unk.	Total	Inf.	1-24	25-44	45-64	>=65
Queens	Total	23	0	1	6	13	3	0	13	0	0	4	7	2	0	10	0	1	2	6	1
	Astoria, Long Island City (01)	0	0	0	0	0	0	0	0	0	0	0	0	0	0	0	0	0	0	0	0
	Sunnyside, Woodside (02)	1	0	0	0	1	0	0	1	0	0	0	1	0	0	0	0	0	0	0	0
	Jackson Heights (03)	0	0	0	0	0	0	0	0	0	0	0	0	0	0	0	0	0	0	0	0
	Elmhurst, Corona (04)	3	0	0	1	1	1	0	3	0	0	1	1	1	0	0	0	0	0	0	0
	Ridgewood, Glendale (05)	1	0	0	0	1	0	0	1	0	0	0	1	0	0	0	0	0	0	0	0
	Rego Park, Forest Hills (06)	2	0	0	0	2	0	0	0	0	0	0	0	0	0	2	0	0	0	2	0
	Flushing (07)	1	0	0	1	0	0	0	0	0	0	0	0	0	0	1	0	0	1	0	0
	Fresh Meadows, Briarwood (08)	0	0	0	0	0	0	0	0	0	0	0	0	0	0	0	0	0	0	0	0
	Woodhaven (09)	1	0	0	1	0	0	0	1	0	0	1	0	0	0	0	0	0	0	0	0
	Howard Beach (10)	2	0	0	0	2	0	0	0	0	0	0	0	0	0	2	0	0	0	2	0
	Bayside (11)	0	0	0	0	0	0	0	0	0	0	0	0	0	0	0	0	0	0	0	0
	Jamaica, St. Albans (12)	11	0	1	2	6	2	0	6	0	0	1	4	1	0	5	0	1	1	2	1
	Queens Village (13)	0	0	0	0	0	0	0	0	0	0	0	0	0	0	0	0	0	0	0	0
The Rockaways (14)	1	0	0	1	0	0	0	1	0	0	1	0	0	0	0	0	0	0	0	0	
Staten Island	Total	3	0	0	1	2	0	0	3	0	0	1	2	0	0	0	0	0	0	0	
	Port Richmond (01)	2	0	0	1	1	0	0	2	0	0	1	1	0	0	0	0	0	0	0	
	Willowbrook, South Beach (02)	1	0	0	0	1	0	0	1	0	0	0	1	0	0	0	0	0	0	0	
	Tottenville (03)	0	0	0	0	0	0	0	0	0	0	0	0	0	0	0	0	0	0	0	

Table 5b: Deaths of Homeless Persons by Sex, Age and Borough of Death, Jul.1,2007 - Jun.30,2008	Deaths Reported by HRA																	
	Total						Male						Female					
	Total	Age					Total	Age					Total	Age				
		Inf.	1-24	25-44	45-64	>=65		Inf.	1-24	25-44	45-64	>=65		Inf.	1-24	25-44	45-64	>=65
New York City	45	0	0	10	33	2	31	0	0	7	22	2	14	0	0	3	11	0
Manhattan	18	0	0	5	12	1	14	0	0	4	9	1	4	0	0	1	3	0
Bronx	14	0	0	4	10	0	8	0	0	2	6	0	6	0	0	2	4	0
Brooklyn	10	0	0	1	8	1	8	0	0	1	6	1	2	0	0	0	2	0
Queens	2	0	0	0	2	0	0	0	0	0	0	0	2	0	0	0	2	0
Staten Island	0	0	0	0	0	0	0	0	0	0	0	0	0	0	0	0	0	0
Borough Unknown	1	0	0	0	1	0	1	0	0	0	1	0	0	0	0	0	0	0

Tables 6a, 6b, and 6c: Leading Causes of Death

Table 6a: Deaths of Homeless Persons By Leading Cause and Gender, Jul.1, 2007-Jun.30, 2008	Gender					
	Total		Male		Female	
	All	Percent	All	Percent	All	Percent
Total	190	100%	142	75%	48	25%
All Other Causes	21	11%	14	67%	7	33%
DISEASES OF HEART	51	27%	41	80%	10	20%
PSYCH. SUBSTANCE USE & ACCIDENTAL DRUG POISONING*	43	23%	34	79%	9	21%
ACCIDENTS EXCEPT DRUG POISONING	27	14%	21	78%	6	22%
MENTAL DISORDERS DUE TO USE OF ALCOHOL**	10	5%	9	90%	1	10%
ASSAULT (HOMICIDE)	9	5%	8	89%	1	11%
MALIGNANT NEOPLASMS	7	4%	5	71%	2	29%
INFLUENZA AND PNEUMONIA	4	2%	2	50%	2	50%
HUMAN IMMUNODEFICIENCY VIRUS DISEASE	4	2%	2	50%	2	50%
INTENTIONAL SELF-HARM (SUICIDE)	3	2%	2	67%	1	33%
CEREBROVASCULAR DISEASE (I60-I69)	2	1%	1	50%	1	50%
VIRAL HEPATITIS	2	1%	2	100%	0	0%
SEPTICEMIA	2	1%	0	0%	2	100%

Table 6a: Deaths of Homeless Persons By Leading Cause and Gender, Jul.1, 2007-Jun.30, 2008	Gender					
	Total		Male		Female	
	All	Percent	All	Percent	All	Percent
AORTIC ANEURYSM AND DISSECTION (I71)	1	1%	0	0%	1	100%
CHRONIC LIVER DISEASE AND CIRRHOSIS	1	1%	1	100%	0	0%
ESSENTIAL HYPERTENSION AND RENAL DISEASES (I10,I12)	1	1%	0	0%	1	100%
ANEMIAS (D50-D64)	1	1%	0	0%	1	100%
CONGENITAL MALFORMATIONS,DEFORMATIONS	1	1%	0	0%	1	100%
DIABETES MELLITUS	1	1%	0	0%	1	100%

*Mental and Behavioral Disorders Due to the Use of, or Accidental Poisoning by, Psychoactive Substances Excluding Alcohol and Tobacco

**Mental and Behavioral Disorders Due to the Use of Alcohol

Table 6b: Deaths of Homeless Persons By Leading Cause and Shelter Residency Status, Jul.1, 2007-Jun.30, 2008	Shelter Residency Status					
	Total		Non-Sheltered		Sheltered	
	All	Percent	All	Percent	All	Percent
Total	190	100%	121	64%	70	36%
All Other Causes	21	11%	16	76%	5	24%
DISEASES OF HEART	51	27%	33	65%	18	35%
PSYCH. SUBSTANCE USE & ACCIDENTAL DRUG POISONING*	43	23	23	53%	20	47%
ACCIDENTS EXCEPT DRUG POISONING	27	14%	20	74%	7	26%
MENTAL DISORDERS DUE TO USE OF ALCOHOL**	10	5%	9	90%	1	10%
ASSAULT (HOMICIDE)	9	5%	7	78%	2	22%
MALIGNANT NEOPLASMS	7	4%	4	57%	3	43%
INFLUENZA AND PNEUMONIA	4	2%	1	25%	3	75%
HUMAN IMMUNODEFICIENCY VIRUS DISEASE	4	2%	3	75%	1	25%
INTENTIONAL SELF-HARM (SUICIDE)	3	2%	2	67%	1	33%
CEREBROVASCULAR DISEASE (I60-I69)	2	1%	0	0%	2	100%
VIRAL HEPATITIS	2	1%	0	0%	2	100%
SEPTICEMIA	2	1%	1	50%	1	50%
AORTIC ANEURYSM AND DISSECTION (I71)	1	1%	1	100%	0	0%
CHRONIC LIVER DISEASE AND CIRRHOSIS	1	1%	1	100%	0	0%
ESSENTIAL HYPERTENSION AND RENAL DISEASES (I10,I12)	1	1%	0	0%	1	100%
ANEMIAS (D50-D64)	1	1%	0	0%	1	100%
CONGENITAL MALFORMATIONS,DEFORMATIONS	1	1%	0	0%	1	100%
DIABETES MELLITUS	1	1%	0	0%	1	100%

*Mental and Behavioral Disorders Due to the Use of, or Accidental Poisoning by, Psychoactive Substances Excluding Alcohol and Tobacco

**Mental and Behavioral Disorders Due to the Use of Alcohol

Table 6c: Deaths of Homeless Persons By External Cause and Gender, Jul.1, 2007-Jun.30, 2008	Gender		
	All	Female	Male
Total	83	16	67
MOTOR VEHICLE	4	1	3
RAILWAY	3	0	3
FALL	2	1	1
SMOKE, FIRE AND FLAMES	2	0	2
POISONING BY PSYCHOACTIVE SUBSTANCE	34	7	27
POISONING BY OTHER NOXIOUS SUBSTANCE	3	1	2
EXPOSURE TO EXCESSIVE NATURAL COLD	5	1	4
OTHER NON-TRANSPORT ACCIDENT	7	1	6
SUICIDE	3	1	2
HOMICIDE	9	1	8
UNDETERMINED INTENT	11	2	9

