

Trends in Pregnancy, Sexual Behavior, and Use of Contraception among Teens in New York City

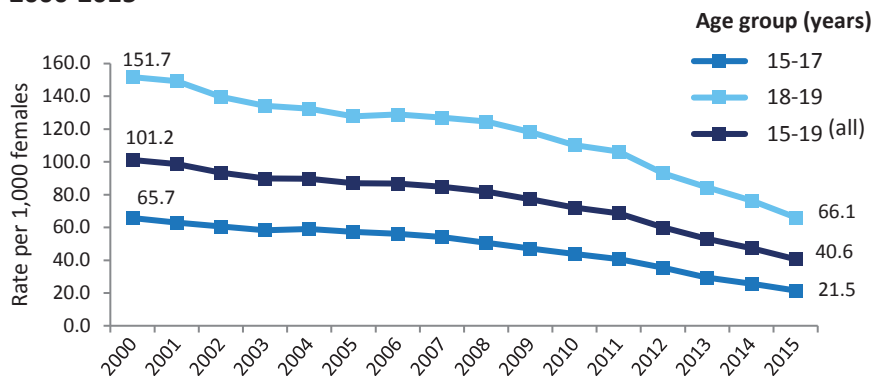
From 2000 to 2015, the pregnancy rate among New York City (NYC) residents ages 15 to 19 declined 60% and the number of teen[^] pregnancies dropped by more than 16,000. Rates declined notably among Black, Latino, and Asian/Pacific Islander teens, and among teens in neighborhoods where the Health Department has established Neighborhood Health Action Centers. ^{^^} During this same period, there were declines in sexual activity and greater use of hormonal or long-acting reversible contraception among NYC public high school students.

Declines in NYC teen pregnancy rates are consistent with declines nationally. From 2000 to 2010 (the latest year of US data), the US teen pregnancy rate declined 31%;¹ the NYC decline was 29% during the same period.

Of the more than 9,000 teen pregnancies among NYC residents in 2015, almost 8 in 10 were unintended (mistimed or unwanted).² There continue to be disparities; teen pregnancy rates are highest in the poorest neighborhoods.

Teen pregnancy declined throughout New York City from 2000 to 2015; declines were larger among younger teens 15 to 17

Pregnancy rates among New York City residents ages 15 to 19 years old, 2000-2015



Source: NYC Office of Vital Statistics, 2000-2015

- The teen pregnancy rate among NYC residents declined 60% from 2000 to 2015, from 101.2 to 40.6 per 1,000 females 15 to 19 years old. Rates decreased 67% among 15- to 17-year-olds and 56% among 18- to 19-year-olds.
- Rates declined in all five NYC boroughs, with the greatest decline seen in Manhattan (68%), particularly among teens ages 15 to 17 (74% decline).

Definitions:

[^]**Teens:** Pregnancies among teens are limited to events in NYC among NYC residents ages 15 to 19; sexual activity and contraception data are limited to NYC public high school students.

^{^^}**Neighborhood Health Action Centers:**

To promote health equity and reduce health disparities at the neighborhood level, the Health Department established **Neighborhood Health Action Centers** (formerly District Public Health Offices) in the South Bronx, East and Central Harlem, and North and Central Brooklyn, neighborhoods with high rates of chronic disease and premature death. Action Centers work with community partners to improve local conditions for good health. Action Center area pregnancy data are from teens residing in these areas; sexual activity and contraception data represent teens who attend public schools located in Action Center areas.

[◇]**Neighborhood poverty:** (based on ZIP code) defined as percentage of residents with incomes below 100% of the federal poverty level (FPL), per American Community Survey 2010-2014: low poverty (<10% of residents below FPL), medium poverty (10 to <20%), high poverty (20 to <30%), and very high poverty (>=30% of residents below FPL).

[†]**Currently sexually active:** had sexual intercourse during the past three months

[‡]**Hormonal birth control (HBC)** includes birth control pill, Depo-Provera, patch, ring and emergency contraception. **Long-acting reversible contraception (LARC)** includes intrauterine device (IUD) and implant. Use of HBC and LARC reported as used by self or partner.

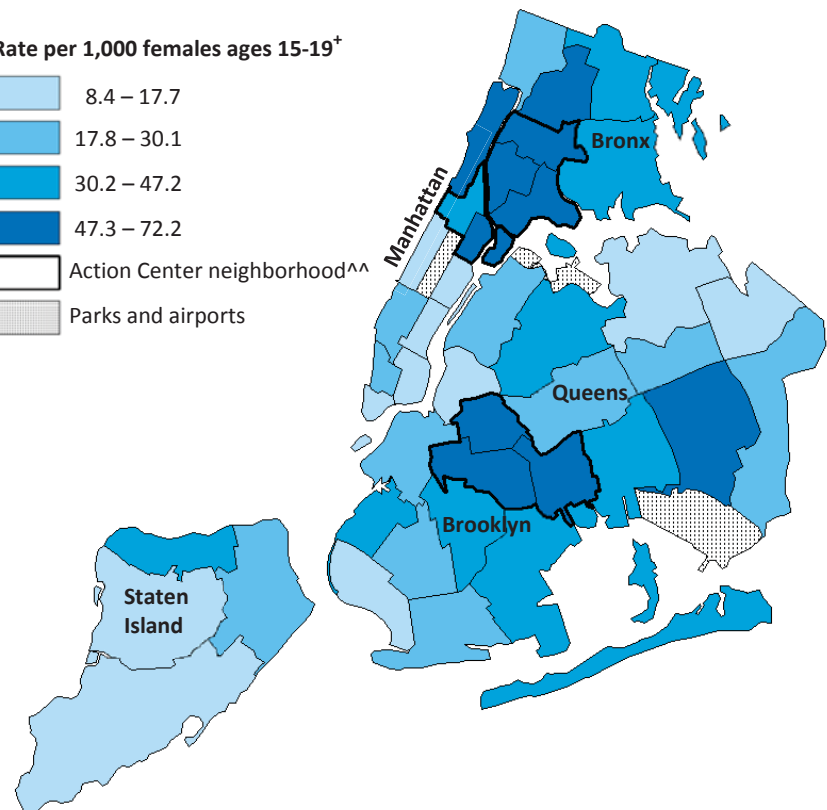
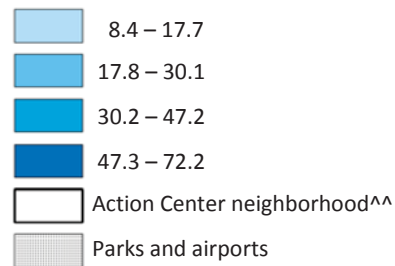
Data Sources: NYC pregnancy data 2000-2015 are from the Bureau of Vital Statistics and prepared by the Office of School Health, NYC Department of Health and Mental Hygiene. Total pregnancies is defined as the sum of live births, spontaneous abortions, and induced abortions. Rates were calculated using interpolated intercensal population estimates updated in 2016 and will differ from previously reported rates based on older population estimates. For the purpose of this publication, Latino includes mothers of Hispanic origin based on ancestry reported on the birth certificate, regardless of reported race; Latino excludes reported ancestry from non-Spanish speaking Central/South American countries, and non-Spanish speaking Caribbean islands. Black, White, Asian/Pacific Islander race categories do not include persons of Latino origin.

The estimated percent of pregnancies that are unintended is calculated by totaling the number of unintended pregnancies ending in birth or spontaneous or induced abortion and dividing by total pregnancies. Data from the 2012-2013 NYC Pregnancy Risk Assessment Monitoring System and from Guttmacher Institute analyses of the 2011-2013 National Survey of Family Growth and the 2008 Abortion Patient Survey were used to estimate the number of unintended pregnancies.

NYC Youth Risk Behavior Survey (YRBS) 2001-2015 YRBS is a self-administered, anonymous survey conducted in NYC public high schools by the Health Department and the NYC Department of Education. Data at the borough level are available from 2003-2015; data for Neighborhood Health Action Center areas are available from 2007-2015. For the purposes of this report, Latino includes persons of Hispanic or Latino origin, as identified by the survey question "Are you Hispanic or Latino?" and regardless of reported race. Black, White, and Asian race categories exclude those who identified as Latino. For more survey details, visit: www1.nyc.gov/site/doh/data/data-sets/nyc-youth-risk-behavior-survey.page

Pregnancy rates among New York City residents ages 15 to 19 years old by neighborhood,[‡] 2015

Rate per 1,000 females ages 15-19⁺



[‡]The United Hospital Fund classifies NYC into 42 neighborhoods comprised of contiguous ZIP codes. A map of UHF neighborhoods and table of corresponding ZIP codes ([PDF](#)) is available.

⁺Each interval contains approximately one-quarter of the UHF neighborhoods.

^{^^}The Health Department has established Neighborhood Health Action Centers (formerly District Public Health Offices) in the South Bronx, East and Central Harlem, and North and Central Brooklyn.

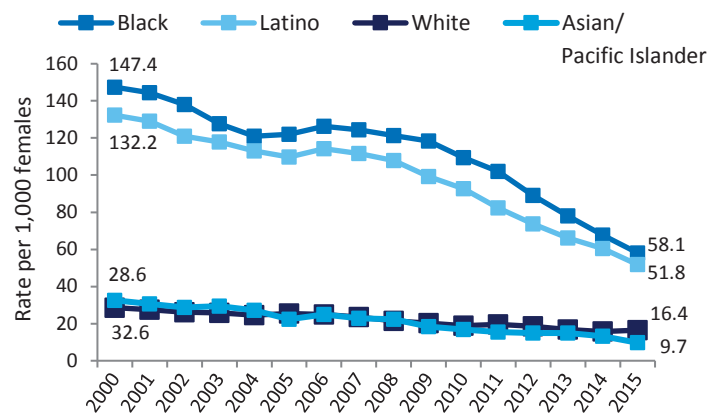
Source: NYC Office of Vital Statistics, 2015

- Between 2000 and 2015, the pregnancy rate among NYC teens declined in the three Health Action Center^{^^} neighborhoods:
 - 71% in East and Central Harlem (from 151.1 to 43.7 per 1,000 females 15 to 19),
 - 63% in North and Central Brooklyn (from 149.4 to 55.3 per 1,000 females 15 to 19), and
 - 61% in the South Bronx (from 170.5 to 67.3 per 1,000 females 15 to 19).
- In non-Action Center areas, the rate declined 61% overall (from 81.7 to 31.5 per 1,000 females 15 to 19).

Declines in pregnancy rates were greater among Black, Latino, and Asian/Pacific Islander teens compared with White teens

- Teen pregnancy rates declined across all racial/ethnic groups between 2000 and 2015 and disparities between groups narrowed.
- From 2000 to 2015, pregnancy rates declined 61% among Black and Latina teens, 70% among Asian/Pacific Islander teens, and 43% among White teens.
- While pregnancy rates remain higher among Black and Latino teens compared with White and Asian/Pacific Islander teens, absolute differences in rates have narrowed. In 2000, absolute differences in pregnancy rates between Black and White teens and Latina and White teens were 118.8 and 103.6 per 1,000, respectively. These differences narrowed to 41.7 and 35.3 per 1,000 in 2015.

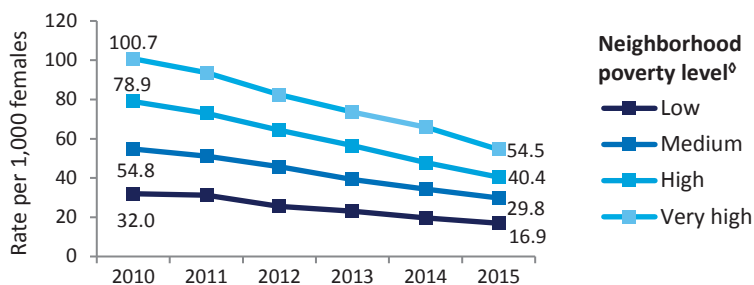
Pregnancy rates among New York City residents ages 15 to 19, by race/ethnicity, 2000-2015



White, Black, Asian/Pacific Islander race categories exclude Latino ethnicity. Latino is defined as Hispanic or Latino of any race.

Source: NYC Office of Vital Statistics, 2000-2015

Pregnancy rates by neighborhood poverty level^o among New York City residents ages 15 to 19, 2010-2015



^oNeighborhood poverty (based on ZIP code) defined as the percentage of residents with incomes below 100% of the Federal Poverty Level (FPL), per American Community Survey 2010-2014. Low poverty: <10% of residents below FPL; Medium: 10-<20%; High: 20-<30%; Very high poverty: 30% or more of residents below FPL.

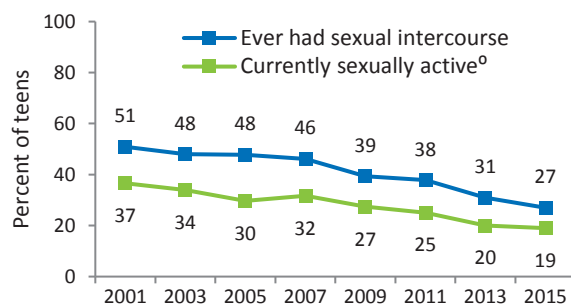
Source: NYC Office of Vital Statistics, 2010-2015

- From 2010 to 2015, declines in teen pregnancy rates were similar (46 to 49%) across neighborhoods of all poverty levels^o (low, medium, high, or very high).
- In 2015, the absolute difference in pregnancy rates among teens in very high poverty vs. low poverty neighborhoods was 37.6 per 1,000 (54.5 vs. 16.9 per 1,000 females ages 15 to 19). This nearly halves the difference seen in 2010 (100.7 vs. 32.0 per 1,000 females, difference of 68.7 per 1,000).

Sexual activity among New York City public high school teens has declined

- From 2001 to 2015, the prevalence of NYC public high school male and female teens who ever had sexual intercourse decreased from 51% to 27% citywide.
- A lower percentage of teens were currently sexually active[†] in 2015 compared with 2001 (37% vs. 19%).
- These declines occurred in all boroughs (from 2003 to 2015) and in all three Action Center neighborhoods (from 2007 to 2015).
Note: year ranges reflect available data at specified geographic level.
- Teens were also more likely to delay sexual initiation: Among teens who had ever had sex, in 2015, one in six reported they had sex before 13 years of age, compared with one in four in 2001 (16% vs. 24%).

Sexual activity among New York City public high school students, 2001-2015



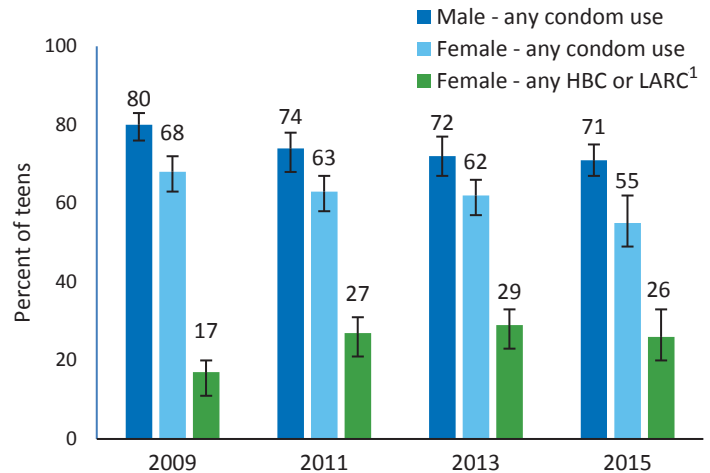
^oHad sexual intercourse during the past three months.

Source: NYC Youth Risk Behavior Surveys, 2001 - 2015

Among sexually active New York City public high school teens, use of hormonal or long-acting reversible contraception increased from 2009 to 2015

- From 2009 to 2015, among sexually active female teens in NYC public high schools, use of hormonal birth control (HBC) or long-acting reversible contraception (LARC)[‡] increased from 17% to 26%.
- Dual protection (condom with HBC or LARC) provides maximum protection from both sexually transmitted infections and unintended pregnancies. Among sexually active female and male teens in NYC public high schools, 10% used dual protection in 2015.
- Condoms were the most common contraceptive method used, either alone or in combination with other methods. Between 2009 and 2015 condom use decreased from 73% to 63% among sexually active teens.
- In 2015, 16% of sexually active teens did not use any contraception the last time they had sex.

Contraceptive use at last sexual intercourse among currently sexually active^o New York City public high school students, by sex, 2009 to 2015



^oHad sexual intercourse during the past three months

¹Hormonal birth control (HBC) includes birth control pill, Depo-Provera, patch, ring, and emergency contraception. Long-acting reversible contraception (LARC) includes intrauterine device (IUD) and implant. May include those who reported also using withdrawal.

Error bars represent 95% confidence intervals, which are an estimate of precision. A smaller bar indicates a more precise estimate.

Source: NYC Youth Risk Behavior Survey 2009-2015

Resources for teens

- Find providers of sexual and reproductive health services in all five boroughs. The Health Department's Sexual Health Clinics provide low- to no-cost services. Find locations at the Health Department's website (search [Sexual Health Clinics](#) at [nyc.gov](#))
- Find information about safe birth control options and where to get them by searching [Teen Health: Birth Control](#) at [nyc.gov](#).
- Find information for teens on sexual health, pregnancy and much more at [NYC Teen – nyc.gov/Teen](#).

Authored by: Cristina Yunzal-Butler, Rebecca Fisher, Kinjia Hinterland, Tracy Agerton

Acknowledgements: George Askew, Phoebe Danza, Kacie Dragan, Hannah Gould, Charon Gwynn, Mary Huynh, Jillian Jessup, Carl Letamendi, Amber Levanon Seligson, Nneka Lundy De La Cruz, Megan Naidoo, Roger Platt, Lorraine Tiezzi

Reference: ¹Curtin SC, Abma JC, Kost K. 2010 pregnancy rates among U.S. women. NCHS Health E-stat Web site.

http://www.cdc.gov/nchs/data/hestat/pregnancy/2010_pregnancy_rates.htm. Published 2015. Accessed May 9, 2016.

²Finer LB, Zolna MR. Declines in unintended pregnancy in the United States, 2008-2011. *N Engl J Med*. 2016;374:843-852.

Suggested citation: Yunzal-Butler C, Fisher R, Hinterland K, Agerton T. Trends in Pregnancy, Sexual Behavior, and Use of Contraception among Teens in New York City. New York City Department of Health and Mental Hygiene: Epi Data Brief (98); December 2017.

MORE New York City Health Data and Publications at [nyc.gov/health/data](#)

Visit EpiQuery – the Health Department's interactive health data system at [nyc.gov/health/EpiQuery](#)

New York City Department of Health and Mental Hygiene





Epi Data Tables

December 2017, No. 98

Trends in Pregnancy, Sexual Behavior, and Use of Contraception among Teens in New York City

Data Tables

- Table 1.** Pregnancy rates among New York City residents ages 15-19, by borough and Neighborhood Health Action Center, 2000 to 2015
- Table 2.** Pregnancy rates among New York City residents ages 15-19, by race/ethnicity, 2000 to 2015
- Table 3.** Pregnancy rates among New York City residents ages 15-19, by United Hospital Fund neighborhood, 2000 to 2015
- Table 4.** Pregnancy rates among New York City residents ages 15-19, by neighborhood poverty level, 2005 to 2015
- Table 5.** Prevalence of ever having sex among New York City public high school students, by demographic and geographic characteristics, 2001 - 2015
- Table 6.** Prevalence of current sexual activity among New York City public high school students, by demographic and geographic characteristics, 2001 - 2015
- Table 7.** Prevalence of New York City public high school students whose age at first sex was under 13 years old, among those who ever had sex, by demographic and geographic characteristics, 2001 - 2015
- Table 8.** Contraception at last intercourse among currently sexually active New York City public high school students, 2009 - 2015
- Table 9.** Contraception at last intercourse among currently sexually active New York City public high school students, by Neighborhood Health Action Center area, 2009 - 2015

Data Sources

NYC pregnancy data are from the Bureau of Vital Statistics and prepared by the Office of School Health, New York City Department of Health and Mental Hygiene. Rates were calculated using interpolated intercensal population estimates, updated in 2016, and will differ from previously reported rates based on older population estimates. Data are limited to events that occurred in New York City among residents ages 15 to 19.

NYC Youth Risk Behavior Surveys (YRBS) 2001-2015 are self-administered, anonymous surveys conducted in NYC public high schools by the Health Department and the NYC Department of Education. For more survey details, visit: www.nyc.gov/html/doh/html/data/youth-risk-behavior.shtml.

Table 1. Pregnancy rates among New York City residents ages 15-19, by borough and Neighborhood Health Action Center area, 2000 to 2015

Source: New York City Department of Health and Mental Hygiene Bureau of Vital Statistics 2000-2015; Rates calculated using NYCDOHMH population estimates, modified from US Census Bureau intercensal population estimates, updated 2016, and may differ from previously reported rates based on prior versions of population estimates. Prepared by Health Department's Office of School Health

Rates are per 1,000 females in specified group. Data are limited to events that occurred in New York City among residents ages 15 to 19.

Woman's Age		2000	2001	2002	2003	2004	2005	2006	2007	2008	2009	2010	2011	2012	2013	2014	2015
NYC Total																	
15-17	65.7	63.0	58.3	59.1	57.4	56.2	54.1	50.6	47.2	43.7	40.6	35.3	29.4	25.7	21.5	21.5	21.5
18-19	151.7	149.2	139.6	134.1	127.8	129.0	126.9	124.7	118.2	110.3	106.3	93.0	84.5	76.3	66.1	66.1	66.1
15-19	101.2	98.7	93.4	89.9	86.9	86.8	84.8	81.9	77.3	72.1	68.6	59.9	52.9	47.4	40.6	40.6	40.6
Borough																	
Bronx	92.0	88.8	86.4	84.9	84.7	81.6	79.3	74.2	69.7	65.4	61.6	57.3	50.3	40.3	36.5	31.8	31.8
18-19	208.3	200.2	189.3	185.4	181.1	175.4	173.4	173.3	168.3	161.2	154.4	148.7	133.2	123.1	112.1	95.4	95.4
15-19	139.5	134.3	128.5	126.0	124.1	118.7	119.2	114.8	110.2	104.8	99.8	94.9	84.4	74.4	67.7	58.1	58.1
Brooklyn	65.8	62.7	60.4	55.7	56.3	54.0	54.2	49.5	47.3	42.9	39.8	33.8	30.2	24.0	21.3	21.3	21.3
18-19	164.0	164.6	153.2	143.5	141.7	140.0	138.6	136.6	131.1	117.2	113.8	99.6	88.1	84.9	72.5	72.5	72.5
15-19	104.4	103.0	97.1	90.6	90.3	88.2	88.5	84.7	81.2	73.1	69.8	60.5	53.7	48.8	42.1	42.1	42.1
Manhattan	78.6	70.8	69.5	65.7	69.7	64.4	63.5	59.8	59.1	50.4	45.3	44.7	37.7	29.8	26.7	20.5	20.5
18-19	119.7	118.1	106.9	102.3	108.0	100.0	97.9	94.4	92.0	86.7	79.7	77.9	64.3	60.4	46.9	40.9	40.9
15-19	98.9	94.3	88.2	84.2	89.2	82.7	81.3	77.8	76.4	69.6	63.6	62.5	52.1	46.4	37.7	31.6	31.6
Queens	46.5	46.0	42.6	43.3	42.8	43.0	40.1	39.7	37.1	33.6	33.2	29.8	26.8	22.0	20.5	15.8	15.8
18-19	126.5	121.9	117.0	115.7	110.1	107.2	112.3	108.5	107.6	98.1	96.8	92.9	82.4	74.7	66.7	59.8	59.8
15-19	78.4	76.4	72.4	72.3	69.8	68.7	69.2	67.4	65.5	59.7	58.9	55.3	49.2	43.3	39.2	33.6	33.6
Staten Island	36.6	38.3	37.6	34.7	36.9	35.7	35.4	34.1	31.4	34.3	28.6	23.8	23.2	18.2	18.0	13.9	13.9
18-19	97.2	103.4	93.4	87.5	91.1	91.5	89.4	86.3	85.9	84.2	74.3	66.9	58.0	53.5	50.5	46.6	46.6
15-19	59.7	63.2	59.0	55.0	57.8	57.3	56.4	54.4	52.7	53.8	46.6	40.7	36.8	32.1	30.7	26.7	26.7
Neighborhood Health Action Center area¹																	
South Bronx	112.8	106.3	101.4	98.2	96.3	96.4	99.5	89.1	80.9	75.3	70.1	66.7	60.0	46.1	43.0	37.8	37.8
18-19	258.0	246.2	230.7	222.5	210.8	209.9	203.7	204.5	196.7	185.9	185.9	174.8	154.9	146.0	132.8	110.7	110.7
15-19	170.5	162.0	153.0	147.9	142.1	141.9	141.4	135.5	127.6	120.0	116.9	110.5	98.4	86.5	79.4	67.3	67.3
North & Central Brooklyn	98.9	95.5	92.5	83.3	87.7	88.1	80.7	81.1	74.5	72.8	66.2	59.9	50.3	49.0	35.1	29.7	29.7
18-19	226.5	231.5	215.5	205.3	197.7	192.3	199.9	200.1	201.2	187.0	169.3	157.8	144.0	127.2	117.6	93.0	93.0
15-19	149.4	149.4	141.3	131.9	131.6	129.8	128.5	128.9	125.5	119.0	107.9	99.5	88.2	80.7	68.5	55.3	55.3
East & Central Harlem	115.5	111.0	98.9	96.9	104.5	94.6	97.3	88.2	83.5	73.4	69.6	60.8	51.1	36.9	37.4	26.8	26.8
18-19	193.4	201.2	178.2	164.2	176.0	166.4	163.2	157.7	141.7	141.7	133.4	131.3	104.5	94.4	73.7	61.2	61.2
15-19	151.1	152.5	135.6	128.1	137.8	126.2	129.8	123.7	118.7	106.0	100.1	94.7	76.9	64.9	55.2	43.7	43.7
Non-Action Center area	51.5	49.7	48.0	46.9	47.0	45.0	44.0	43.0	40.7	37.6	35.0	31.7	27.7	22.7	19.4	15.9	15.9
18-19	124.6	121.2	113.8	110.5	109.6	105.0	106.6	103.5	101.5	97.5	90.5	85.2	74.3	67.9	59.7	52.1	52.1
15-19	81.7	79.4	75.4	73.5	73.3	70.3	70.5	68.7	66.6	63.2	58.7	54.6	47.7	42.1	36.7	31.5	31.5

¹To promote health equity and reduce health disparities, the Health Department established Neighborhood Health Action Centers in the South Bronx, East and Central Harlem, and North and Central Brooklyn, neighborhoods with high rates of chronic disease and premature death. Action Center area pregnancy rates are based on combined United Hospital Fund neighborhoods. Pregnancy data for Action Center areas are from teens residing in those neighborhoods.

Table 2. Pregnancy rates among New York City residents ages 15-19, by race/ethnicity 2000 to 2015

Source: New York City Department of Health and Mental Hygiene Bureau of Vital Statistics 2000-2015; Rates calculated using NYC DOHMH population estimates, modified from US Census Bureau intercensal population estimates, updated 2016, and may differ from previously reported rates based on prior versions of population estimates. Prepared by Health Department's Office of School Health

Rates are per 1,000 females in specified group. Data are limited to events that occurred in New York City among residents ages 15 to 19.

		2000	2001	2002	2003	2004	2005	2006	2007	2008	2009	2010	2011	2012	2013	2014	2015
Woman's																	
Age																	
15-17		65.7	63.0	60.7	58.3	59.1	57.4	56.2	54.1	50.6	47.2	43.7	40.6	35.3	29.4	25.7	21.5
18-19		151.7	149.2	139.6	134.1	132.6	127.8	129.0	126.9	124.7	118.2	110.3	106.3	93.0	84.5	76.3	66.1
15-19		101.2	98.7	93.4	89.9	89.8	86.9	86.8	84.8	81.9	77.3	72.1	68.6	59.9	52.9	47.4	40.6
Race/ethnicity¹																	
Black, non-Latino		96.3	92.5	89.7	82.4	79.3	79.4	80.4	78.4	74.9	73.3	67.5	59.7	51.9	44.4	36.5	30.5
18-19		227.3	225.0	212.4	196.9	184.1	186.4	195.0	192.8	189.9	184.4	170.3	163.2	143.2	127.1	113.1	98.3
15-19		147.4	144.4	137.9	127.6	120.9	122.0	126.2	124.4	121.3	118.3	109.4	101.8	89.0	78.0	67.7	58.1
Latino		86.1	83.4	79.3	76.7	73.6	72.9	74.9	71.8	66.6	59.3	56.0	49.2	43.3	35.6	33.4	28.4
18-19		197.7	193.9	180.1	176.0	168.8	162.0	170.1	167.9	166.3	155.9	144.7	128.8	116.6	109.5	98.8	85.0
15-19		132.2	129.1	121.0	117.8	112.9	109.8	114.3	111.6	107.8	99.2	92.7	82.1	73.6	66.1	60.4	51.8
White, non-Latino		14.3	14.6	14.3	14.6	13.4	13.7	13.5	12.5	10.3	9.8	8.8	8.7	8.9	7.5	6.3	6.5
18-19		47.3	44.0	41.4	39.8	38.4	39.7	38.8	36.9	34.6	32.6	30.8	32.1	29.7	27.5	26.5	27.8
15-19		28.6	27.4	26.2	25.7	24.5	25.4	24.9	23.6	21.4	20.2	18.9	19.5	18.6	16.8	15.7	16.4
Asian & Pacific Islander, non-Latino		19.1	14.9	13.6	13.7	13.3	11.2	12.3	11.9	11.7	10.2	7.6	7.5	6.1	7.5	5.1	3.6
18-19		50.9	51.8	49.1	50.3	45.6	36.9	41.4	37.0	36.3	28.9	28.6	25.6	26.2	24.3	23.2	17.4
15-19		32.6	30.6	28.8	29.4	27.2	22.3	25.0	22.8	22.4	18.4	16.8	15.5	14.9	14.9	13.1	9.7

¹For the purpose of this publication, Latino includes persons of Hispanic origin based on ancestry reported on the birth certificate, regardless of reported race; Latino excludes reported ancestry from non-Spanish speaking Central/South American countries, and non-Spanish speaking Caribbean islands. Black, White and Asian race categories do not include persons of Latino origin.

Table 3. Pregnancy rates among New York City residents ages 15-19, by United Hospital Fund* neighborhood, 2000 to 2015

Source: New York City Department of Health and Mental Hygiene Bureau of Vital Statistics 2000-2015; Rates calculated using NYC DOHMH population estimates, modified from US Census Bureau intercensal population estimates, updated 2016, and may differ from previously reported rates based on prior versions of population estimates. Prepared by Health Department's Office of School Health

Rates are per 1,000 females in specified group. Data are limited to events that occurred in New York City among residents ages 15 to 19.

UHF Code	2000	2001	2002	2003	2004	2005	2006	2007	2008	2009	2010	2011	2012	2013	2014	2015
NYC Total	101.2	98.7	93.4	89.9	89.8	86.9	86.8	84.8	81.9	77.3	72.1	68.6	59.9	52.9	47.4	40.6
Bronx																
Kingsbridge - Riverdale	69.8	67.0	58.9	58.1	60.4	57.6	55.0	48.9	46.4	44.0	45.3	39.7	39.3	26.9	26.3	20.9
Northeast Bronx	94.1	104.4	93.0	95.3	101.6	92.0	90.0	95.9	87.2	90.4	80.7	74.4	65.5	52.9	48.8	42.2
Fordham - Bronx Park	135.6	129.4	121.2	118.7	118.5	110.6	115.9	107.7	104.6	96.8	92.0	87.4	77.4	69.3	59.1	51.2
Pelham - Throgs Neck	111.4	103.7	105.8	109.2	111.7	97.9	98.8	93.3	95.3	94.7	87.9	79.0	68.6	64.2	54.6	46.7
Grotona - Tremont	173.3	166.4	151.7	152.3	138.1	137.3	138.7	131.1	125.6	119.4	116.4	107.6	91.6	82.9	70.8	64.8
High Bridge - Morrisania	169.1	162.3	151.5	143.0	141.8	142.1	139.0	132.8	128.6	119.1	113.2	109.0	104.4	92.1	87.2	66.7
Hunts Point - Mott Haven	168.2	154.8	157.2	148.4	148.8	148.8	149.3	146.5	129.4	122.3	123.5	117.3	99.7	83.7	80.8	72.2
Brooklyn																
Greenpoint	63.5	64.5	58.4	52.3	51.6	52.3	54.6	52.5	58.5	51.0	48.2	44.9	31.6	31.2	26.5	17.7
Downtown - Heights - Slope	119.8	103.2	101.8	90.5	92.4	83.1	88.9	83.1	80.8	77.9	72.0	64.0	54.9	46.4	40.6	30.1
Bedford Stuyvesant - Crown Heights	145.2	149.6	145.8	135.2	131.6	135.7	129.0	128.3	126.2	118.2	112.9	104.3	92.1	79.4	68.2	54.8
East New York	142.4	144.8	134.4	122.6	123.9	117.1	126.4	127.0	121.4	121.3	105.1	93.0	88.0	85.8	74.4	59.5
Sunset Park	108.7	104.8	110.1	91.2	95.1	95.5	95.2	102.0	92.4	82.3	71.3	67.6	69.0	60.9	51.5	42.8
Borough Park	46.7	42.5	38.9	35.6	36.6	37.3	35.9	34.0	33.4	30.2	30.2	30.5	27.1	24.5	26.5	21.2
East Flatbush - Flatbush	113.8	113.4	108.8	104.3	101.6	101.7	95.6	97.9	93.1	97.2	82.3	74.5	66.9	60.0	46.2	42.7
Canarsie - Flatlands	80.2	79.7	78.6	76.2	71.4	71.8	75.6	77.0	72.5	73.6	64.8	64.3	49.3	39.7	36.8	36.8
Bensonhurst - Bay Ridge	45.6	40.1	33.2	36.1	39.8	34.7	34.9	37.3	38.3	33.2	30.2	36.1	24.0	22.5	16.7	16.8
Coney Island - Sheepshead Bay	64.9	67.8	60.0	60.6	61.2	56.9	60.0	57.2	50.5	48.4	45.6	43.6	43.8	31.3	30.3	29.0
Williamsburg - Bushwick	162.6	153.5	141.0	135.8	139.3	133.4	130.0	131.9	128.8	117.6	103.5	99.3	82.8	77.2	63.0	51.9
Manhattan																
Washington Heights - Inwood	124.3	121.5	121.6	123.5	123.8	112.4	114.3	113.7	112.6	107.7	101.7	86.0	73.7	65.7	60.1	48.9
Central Harlem - Morningside Heights	143.7	139.0	128.5	119.7	124.3	117.4	120.9	117.7	110.1	98.0	97.5	85.6	68.8	61.2	48.7	39.2
East Harlem	161.8	172.2	146.0	140.7	158.4	139.7	143.4	132.8	131.9	118.4	104.2	108.9	89.7	70.7	65.4	50.9
Upper West Side	56.3	49.7	54.5	45.3	49.9	52.1	37.0	46.1	44.6	39.7	30.4	37.1	29.3	24.0	20.2	14.1
Upper East Side	36.3	35.9	30.6	34.1	28.7	33.3	27.6	23.6	20.8	22.3	20.6	19.8	16.6	26.9	18.7	17.2
Chelsea - Clinton	85.4	78.7	73.6	71.5	66.9	63.4	64.1	47.9	51.4	46.4	40.1	34.8	25.3	23.0	22.1	19.7
Gramercy Park - Murray Hill	37.8	26.1	19.2	24.2	24.7	26.3	23.9	26.1	24.3	30.4	15.9	27.8	15.1	18.4	11.1	12.2
Greenwich Village - Soho	30.5	33.2	25.7	23.3	22.7	21.6	21.4	18.4	27.5	28.6	13.5	21.4	27.7	25.9	27.8	23.0
Union Square - Lower East Side	63.6	58.0	53.5	48.2	54.2	50.4	47.7	41.8	43.3	39.3	37.7	32.8	27.3	24.9	19.0	13.5
Lower Manhattan	51.5	41.3	34.1	32.6	39.8	35.0	37.2	37.7	39.5	30.5	27.5	23.2	27.1	19.7	11.0	13.5
Queens																
Long Island City - Astoria	68.9	74.3	67.3	76.4	76.3	69.9	69.8	58.4	64.6	53.6	68.8	58.6	40.4	37.9	35.0	30.0
West Queens	88.5	85.6	80.3	83.8	82.2	74.8	76.9	79.9	74.4	66.4	70.2	59.2	57.2	48.8	44.2	39.8
Flushing - Cleanview	42.3	36.3	33.7	32.0	35.9	30.8	31.9	34.0	31.8	29.3	29.1	23.0	25.4	19.4	19.9	14.5
Bayside - Little Neck	19.4	21.2	19.9	19.3	17.1	18.9	17.1	20.6	13.3	13.3	9.6	12.5	11.8	8.7	8.3	8.4
Ridgewood - Forest Hills	50.9	51.5	49.3	49.5	53.3	46.8	54.9	47.1	50.8	43.2	45.6	44.7	38.2	35.1	30.9	24.2
Fresh Meadows	32.3	34.5	40.9	39.3	38.4	37.0	42.4	28.5	31.8	26.0	27.2	26.8	24.8	20.8	18.1	18.6
Southwest Queens	87.8	80.1	75.8	74.7	73.7	76.9	73.9	71.8	67.1	61.9	57.0	58.9	56.2	48.6	43.3	34.0
Jamaica	106.5	103.7	101.4	100.1	84.6	89.2	89.4	89.5	86.8	82.3	76.2	75.4	63.0	61.8	50.8	48.7
South East Queens	76.5	74.5	70.2	68.5	65.6	66.7	67.6	65.1	62.3	61.2	55.2	47.4	48.0	40.6	30.3	27.4
Rockaway	115.6	111.1	98.9	84.4	84.4	95.7	94.0	94.4	93.3	79.9	76.0	75.5	70.1	56.9	50.5	42.5
Staten Island																
Port Richmond	114.1	120.9	109.1	108.9	101.7	104.3	108.5	106.0	99.7	100.6	91.4	76.7	72.6	63.6	52.1	47.2
Stapleton - St. George	88.7	97.5	83.5	76.4	83.4	77.8	84.2	74.3	78.4	72.2	63.8	56.6	49.4	44.3	46.5	29.5
Willowbrook	32.6	31.4	35.9	30.2	39.3	40.1	29.3	35.7	30.1	36.0	31.6	29.1	18.0	15.1	15.0	13.8
South Beach - Tottenville	504	25.5	28.2	26.4	27.3	25.8	23.7	22.9	21.3	23.6	17.5	17.3	17.9	13.7	12.3	11.9

*The United Hospital Fund classifies New York City into 42 neighborhoods comprised of contiguous ZIP codes.

Table 4. Pregnancy rates among New York City residents ages 15-19, by neighborhood poverty level,^ 2010 to 2015

Source: New York City Department of Health and Mental Hygiene Bureau of Vital Statistics 2010-2015; Rates calculated using NYC DOHMH population estimates, modified from US Census Bureau intercensal population estimates, updated 2016, and may differ from previously reported rates based on prior versions of population estimates. Prepared by Health Department's Office of School Health Rates are per 1,000 females in specified group. Data are limited to events that occurred in New York City among residents ages 15 to 19.

	Woman's	2010	2011	2012	2013	2014	2015
	Age						
NYC Total	15-17	43.7	40.6	35.3	29.4	25.7	21.5
	18-19	110.3	106.3	93.0	84.5	76.3	66.1
	15-19	72.1	68.6	59.9	52.9	47.4	40.6
Neighborhood poverty level^							
Low: 0 to <10%	15-17	17.4	16.9	14.3	12.3	10.8	6.5
	18-19	54.1	53.2	42.6	39.5	32.9	32.7
	15-19	32.0	31.3	25.6	23.1	19.6	16.9
Medium: 10% to <20%	15-17	33.6	30.0	26.7	21.7	18.1	15.2
	18-19	80.7	76.9	68.7	60.4	54.0	47.4
	15-19	54.8	51.2	45.7	39.2	34.4	29.8
High: 20% to <30%	15-17	47.7	42.7	37.4	30.7	25.2	21.2
	18-19	123.3	115.9	102.6	93.0	80.0	67.8
	15-19	78.9	72.9	64.3	56.4	47.8	40.4
Very High: 30% or higher	15-17	61.5	57.0	48.9	41.3	36.1	30.4
	18-19	154.3	143.8	128.3	117.3	106.3	87.0
	15-19	100.7	93.7	82.5	73.6	65.9	54.5

^Neighborhood poverty (based on ZIP code) defined as the percent of residents with incomes below 100% of the Federal Poverty Level, per American Community Survey 2010-2014.

Table 5. Prevalence of ever having sex among New York City public high school students, by demographic and geographic characteristics, 2001 - 2015

Source: NYC Youth Risk Behavior Survey, 2001 - 2015; Data are weighted to the NYC public high school student population eligible for the survey.

	2001		2003		2005		2007		2009		2011		2013		2015		linear trend		
	Percent	Confidence Interval	Percent	Confidence Interval	Percent	Confidence Interval	Percent	Confidence Interval	Percent	Confidence Interval	Percent	Confidence Interval	Percent	Confidence Interval	Percent	Confidence Interval	95% CI	trend	
																			95% CI
Sex																			
Female	45.6	(38.7 - 52.7)	41.1	(38.6 - 43.7)	43.1	(39.5 - 46.9)	41.2	(37.0 - 45.6)	34.5 D	(30.3 - 38.9)	32.1	(28.3 - 36.2)	26.2	(23.2 - 29.4)	24.3	(20.9 - 28.1)		<0.001	
Male	56.6	(47.5 - 65.3)	55.3	(51.3 - 59.4)	52.3	(46.5 - 58.0)	51.6	(37.0 - 45.6)	45.2	(39.6 - 50.9)	43.9	(40.6 - 47.3)	36.3	(33.0 - 39.8)	30.4	(26.0 - 35.2)		<0.001	
Age group																			
14 and younger	38.0 *	(27.4 - 49.8)	29.5 D	(24.2 - 35.3)	34.9	(28.0 - 42.5)	27.9	(22.7 - 33.8)	22.9	(19.1 - 27.2)	20.4	(17.6 - 23.6)	16.1	(13.6 - 19.1)	12.3	(9.5 - 15.8)		<0.001	
15	46.9	(37.9 - 56.1)	42.9	(39.3 - 46.7)	42.7	(36.7 - 48.9)	41.8	(35.9 - 47.9)	34.6	(29.6 - 39.9)	32.2	(26.3 - 38.7)	24.4	(21.2 - 27.9)	21.6	(18.0 - 25.7)		<0.001	
16	56.7	(46.8 - 66.1)	53.2	(48.7 - 57.6)	50.4	(45.6 - 55.3)	48.0	(42.9 - 53.2)	45.3	(40.7 - 50.0)	45.7	(42.0 - 49.6)	33.9	(27.9 - 40.4)	30.9	(27.4 - 34.5)		<0.001	
17	57.3	(48.4 - 65.8)	58.5	(54.0 - 62.8)	56.1	(49.1 - 62.8)	56.8	(52.0 - 61.5)	56.3	(51.8 - 60.6)	53.6	(49.2 - 58.0)	49.8	(45.6 - 54.1)	43.1	(38.9 - 47.4)		<0.001	
18 and older	57.4 *	(41.9 - 71.6)	67.2	(60.1 - 73.6)	67.9	(58.2 - 76.4)	59.6	(52.1 - 66.8)	68.0	(61.3 - 74.0)	66.5 D	(55.5 - 75.9)	57.6	(52.0 - 63.0)	61.0 *	(48.5 - 72.1)		0.793	
Grade																			
9th grade	47.9	(38.6 - 57.3)	39.4	(36.1 - 42.8)	41.1	(35.3 - 47.2)	36.2	(30.1 - 42.8)	28.4	(23.5 - 33.9)	24.6	(21.1 - 28.4)	19.8	(16.7 - 23.4)	14.8	(11.4 - 19.0)		<0.001	
10th grade	50.3	(41.0 - 59.6)	48.0	(43.0 - 53.0)	47.2	(41.8 - 52.7)	45.3	(39.7 - 51.0)	34.6	(29.1 - 40.5)	33.6	(28.0 - 39.7)	24.8	(20.9 - 29.1)	21.8	(18.5 - 25.4)		<0.001	
11th grade	52.3 *	(40.5 - 63.9)	52.4	(48.2 - 56.6)	50.0	(43.2 - 56.9)	51.7	(46.8 - 56.7)	44.2	(39.3 - 49.1)	43.8	(39.2 - 48.4)	33.7	(27.3 - 40.7)	31.3	(26.9 - 36.1)		<0.001	
12th grade	57.5 *D	(41.5 - 72.0)	63.3	(58.4 - 68.0)	58.3	(50.9 - 65.5)	58.9	(51.7 - 65.7)	56.5 U	(51.6 - 61.4)	54.3	(49.3 - 59.3)	50.4	(46.7 - 54.1)	44.9	(40.1 - 49.9)		0.004	
Race/Ethnicity¹																			
Latino	56.2	(50.1 - 62.1)	51.7	(48.6 - 54.7)	51.4	(47.3 - 55.4)	53.1	(49.3 - 56.8)	47.2	(44.1 - 50.3)	46.2	(43.5 - 49.0)	38.1	(34.9 - 41.4)	33.5 U	(29.1 - 38.3)		<0.001	
White, non-Latino	38.5 *U	(26.4 - 52.2)	35.5 U	(31.4 - 39.8)	38.8	(34.6 - 43.1)	34.7	(29.8 - 39.9)	27.5 U	(20.9 - 35.2)	25.9	(22.0 - 30.2)	24.9	(20.1 - 30.4)	22.8	(19.5 - 26.5)		<0.001	
Black, non-Latino	60.2	(55.3 - 65.0)	59.2	(54.5 - 63.7)	59.1	(53.0 - 64.9)	56.6	(51.7 - 61.3)	50.7	(47.0 - 54.4)	45.7	(42.2 - 49.2)	37.4	(33.6 - 41.3)	32.6	(26.6 - 39.2)		<0.001	
Asian, non-Latino	20.6	(13.1 - 30.9)	16.0	(13.2 - 19.3)	18.2	(13.5 - 24.2)	15.5 U	(11.5 - 20.5)	11.3	(8.8 - 14.4)	15.1	(11.8 - 19.1)	11.3	(8.5 - 14.8)	11.2	(8.7 - 14.4)		0.002	
Other, non-Latino	50.0 *	(34.0 - 66.0)	47.5 D	(40.6 - 54.4)	47.5 U	(42.7 - 52.4)	46.8	(38.2 - 55.6)	38.5 D	(33.0 - 44.3)	41.5 D	(35.1 - 48.1)	36.5 U	(28.8 - 45.0)	29.2	(21.9 - 37.7)		0.001	
Borough of School																			
Bronx	NA	(50.1 - 58.5)	54.3	(49.5 - 61.9)	55.8	(49.5 - 61.9)	53.5 D	(47.7 - 59.2)	46.6	(43.0 - 50.3)	43.5 U	(39.8 - 47.4)	37.5 U	(33.1 - 42.1)	30.0	(23.4 - 37.6)		<0.001	
Brooklyn	NA	(44.8 - 58.3)	51.6	(44.8 - 58.3)	47.2	(38.3 - 56.2)	47.6	(40.3 - 55.1)	42.4 *	(29.5 - 56.4)	38.5 U	(31.4 - 46.1)	31.9	(27.3 - 36.9)	25.5 U	(19.9 - 32.1)		<0.001	
Manhattan	NA	(39.8 - 52.8)	46.2	(39.8 - 52.8)	49.9	(40.8 - 59.0)	42.8	(34.6 - 51.3)	38.4	(32.1 - 45.1)	38.7	(29.5 - 48.7)	29.6	(22.4 - 37.8)	29.5 *D	(18.4 - 43.7)		<0.001	
Queens	NA	(37.5 - 48.7)	43.0	(37.5 - 48.7)	42.7	(37.2 - 48.4)	43.3	(34.0 - 53.2)	32.8	(26.3 - 40.0)	34.7	(29.1 - 40.9)	28.5 U	(24.1 - 33.4)	26.3	(21.7 - 31.6)		<0.001	
Staten Island	NA	(34.4 - 44.0)	39.1	(34.4 - 44.0)	44.4	(39.6 - 49.4)	38.6	(34.6 - 42.8)	34.5 U	(29.7 - 39.7)	28.2	(24.7 - 32.0)	26.6	(22.8 - 30.9)	22.8	(18.5 - 27.8)		<0.001	
Neighborhood Health Action Center area (of School)²																			
South Bronx	NA	NA	NA	(46.3 - 59.3)	55.3	(50.2 - 60.3)	47.4	(39.0 - 55.9)	39.4	(34.1 - 44.9)	29.2	(24.4 - 34.5)							
North and Central Brooklyn	NA	NA	NA	(51.6 - 60.6)	55.2	(49.4 - 60.8)	55.7	(49.2 - 62.0)	44.3	(39.2 - 49.5)	39.5 U	(30.8 - 48.9)							
East and Central Harlem	NA	NA	NA	(43.6 - 53.9)	44.8	(37.6 - 52.2)	39.3	(32.9 - 46.2)	36.1	(31.4 - 41.2)	29.6	(23.8 - 36.1)							
All other neighborhoods	NA	NA	NA	(40.4 - 49.4)	37.1	(32.1 - 42.4)	36.1	(32.4 - 40.1)	29.8	(26.9 - 32.8)	26.4	(22.5 - 30.7)							

Confidence intervals (CIs) are a measure of estimate precision; the wider the CI, the more imprecise the estimate.

p-value refers to the significance of the test for trend; p-values below the significance level (0.05) appear in **bold** and indicate a statistically significant trend.

*Estimate should be interpreted with caution. Estimate's Relative Standard Error (a measure of estimate precision) is greater than 30% or the sample size is less than 50, or the 95% confidence interval half width is greater than 10, making the estimate potentially unreliable.

D When rounding to the nearest whole number, round down.

U When rounding to the nearest whole number, round up.

¹For the purpose of this publication, Latino includes persons of Hispanic or Latino origin, as identified by the survey question "Are you Hispanic or Latino?" and regardless of reported race. Black, White, and Asian race categories exclude those who identified as Latino. "Other" category includes non-Latino students who selected American Indian/Alaska Native, Native Hawaiian/other Pacific Islander, or multiple race categories.²Neighborhood Health Action Centers: To promote health equity and reduce health disparities at the neighborhood level, the Health Department established Neighborhood Health Action Centers (formerly District Public Health Offices) in the South Bronx, East and Central Harlem, and North and Central Brooklyn, neighborhoods with high rates of chronic disease and premature death. YRBS data for Action Center areas represent teens who attend public schools in those neighborhoods.

Table 6. Prevalence of current sexual activity¹ among New York City public high school students, 2001 - 2015, by demographic characteristics

Source: NYC Youth Risk Behavior Survey, 2001 - 2015. Data are weighted to the NYC public high school student population eligible for the survey.

	2001		2003		2005		2007		2009		2011		2013		2015		linear trend 2001-2015 p- value†
	Percent	95% Confidence Interval	Percent	95% Confidence Interval	Percent	95% Confidence Interval	Percent	95% Confidence Interval	Percent	95% Confidence Interval	Percent	95% Confidence Interval	Percent	95% Confidence Interval	Percent	95% Confidence Interval	
Overall	36.6	(31.6 - 42.0)	33.9	(26.6 - 33.1)	31.7	(28.7 - 34.8)	27.4	(23.8 - 31.3)	25.1	(22.6 - 27.7)	20.3	(18.4 - 22.4)	18.7	(15.9 - 21.9)	<0.001		
Sex																	
Female	34.5 D	(29.3 - 40.0)	30.8	(25.5 - 34.0)	31.0	(27.4 - 34.9)	25.2	(21.8 - 28.9)	22.5 U	(19.5 - 25.9)	18.1	(15.9 - 20.5)	18.5 D	(15.4 - 22.0)	<0.001		
Male	38.9	(32.8 - 45.5)	37.1	(25.3 - 34.0)	32.4	(29.3 - 35.7)	30.1	(25.8 - 34.8)	27.8	(25.0 - 30.8)	22.7	(20.3 - 25.3)	19.1	(15.7 - 23.0)	<0.001		
Age group																	
14 and younger	22.3	(16.6 - 29.2)	18.1	(15.3 - 21.4)	17.8	(12.8 - 20.7)	13.4	(11.2 - 16.0)	12.2	(10.4 - 14.1)	9.0	(7.4 - 10.9)	6.3	(4.5 - 8.7)	<0.001		
15	34.3	(27.0 - 42.4)	28.5 D	(26.1 - 31.0)	24.1	(20.7 - 27.8)	22.8	(19.4 - 26.5)	20.1	(16.0 - 24.9)	15.4	(13.0 - 18.3)	14.3	(11.9 - 17.0)	<0.001		
16	42.4	(35.9 - 49.2)	39.3	(35.8 - 42.9)	33.7	(29.0 - 38.8)	31.9	(28.6 - 35.5)	32.2	(27.6 - 34.2)	22.3	(18.4 - 26.7)	22.1	(18.6 - 26.1)	<0.001		
17	42.8	(36.8 - 49.0)	42.5 D	(32.3 - 42.7)	40.6	(36.4 - 44.8)	43.0	(38.3 - 47.8)	37.4	(33.9 - 41.1)	34.1	(30.3 - 38.2)	31.5 U	(27.7 - 35.6)	<0.001		
18 and older	41.5 *U	(28.5 - 55.9)	51.6	(40.9 - 56.1)	49.0	(42.5 - 55.6)	50.3	(43.7 - 57.0)	50.2 *	(39.6 - 60.9)	40.5 D	(34.8 - 46.5)	45.1 *	(29.6-61.6)	0.762		
Grade																	
9th grade	32.8	(25.2 - 41.4)	25.4	(23.0 - 27.9)	21.5 U	(18.3 - 25.2)	22.6	(18.6 - 27.2)	17.5 U	(14.4 - 21.1)	15.0	(12.8 - 17.4)	11.3	(9.3 - 13.7)	8.1	(6.1 - 10.6)	<0.001
10th grade	35.7	(28.4 - 43.7)	34.4	(30.6 - 38.5)	30.0	(26.0 - 34.3)	29.1	(25.3 - 33.3)	23.0	(19.3 - 27.2)	21.4	(17.5 - 25.9)	16.2	(13.1 - 19.8)	14.4	(12.4 - 16.7)	<0.001
11th grade	40.6 *	(30.9 - 51.2)	38.1	(34.9 - 41.4)	34.7	(29.2 - 40.6)	37.3	(33.0 - 41.7)	32.0	(28.0 - 36.2)	30.8	(27.0 - 34.9)	22.6	(18.1 - 27.8)	23.4	(19.1 - 28.4)	<0.001
12th grade	42.7 *	(31.0 - 55.3)	47.8	(42.9 - 52.7)	40.1	(32.5 - 48.2)	45.4	(39.0 - 51.9)	42.5 U	(37.7 - 47.5)	37.4	(33.5 - 41.5)	34.5 D	(30.7 - 38.4)	32.3	(27.5 - 37.4)	0.002
Race/Ethnicity²																	
Latino	41.2	(36.1 - 46.5)	35.9	(33.5 - 38.5)	33.2	(30.1 - 36.5)	37.0	(34.4 - 39.6)	33.1	(30.4 - 36.0)	30.6	(28.6 - 32.8)	25.4	(22.5 - 28.5)	23.3	(20.1 - 26.9)	<0.001
White, non-Latino	30.2	(22.4 - 39.5)	25.1	(21.8 - 28.8)	25.4	(21.6 - 29.6)	22.3	(19.3 - 25.6)	20.7	(14.7 - 28.3)	18.2	(15.3 - 21.5)	18.0	(13.5 - 23.5)	17.1	(15.2 - 19.2)	<0.001
Black, non-Latino	40.8	(37.8 - 44.0)	42.2	(38.8 - 45.6)	35.4	(29.1 - 42.2)	39.4	(34.7 - 44.2)	35.3	(32.0 - 38.8)	30.3	(26.5 - 34.4)	23.7	(20.7 - 26.9)	22.4	(16.7 - 29.4)	<0.001
Asian, non-Latino	15.9	(10.0 - 24.4)	11.5 D	(9.1 - 14.4)	12.4	(9.5 - 15.9)	8.7	(5.9 - 12.9)	7.5 D	(5.5 - 10.2)	9.7	(7.2 - 12.9)	6.4	(4.8 - 8.3)	7.2	(5.7 - 9.0)	<0.001
Other, non-Latino	36.1 *	(19.7 - 56.5)	33.8	(28.5 - 39.5)	27.3	(21.0 - 34.6)	38.6 *	(29.0 - 49.2)	25.0	(20.8 - 29.8)	25.7	(19.5 - 33.1)	23.2	(16.3 - 31.9)	19.9	(12.7 - 29.8)	0.013
Borough of School																	
Bronx	NA	(38.5 U)	38.5 U	(35.1 - 42.0)	38.7	(32.9 - 44.8)	37.3	(32.1 - 42.9)	32.7	(29.6 - 36.0)	28.5 U	(25.4 - 31.8)	24.6	(21.8 - 27.7)	19.9	(15.0 - 25.9)	<0.001
Brooklyn	NA	(36.3 U)	36.3	(32.2 - 40.7)	25.9	(19.6 - 33.3)	32.5 U	(26.9 - 38.8)	29.8 *	(19.7 - 42.4)	27.5 D	(21.3 - 34.6)	20.4	(16.7 - 24.7)	16.3	(13.5 - 19.4)	<0.001
Manhattan	NA	(32.9 U)	32.9	(28.2 - 38.1)	33.3	(28.5 - 38.5)	30.0	(24.1 - 36.7)	26.3	(21.7 - 31.5)	25.0	(19.1 - 32.1)	18.1	(12.9 - 24.7)	21.8 *	(12.2 - 36.1)	0.002
Queens	NA	(29.8 U)	29.8	(26.4 - 33.5)	26.1	(21.5 - 31.2)	28.8	(22.3 - 36.3)	22.3	(17.5 - 27.9)	21.5 D	(19.1 - 24.1)	19.6	(16.5 - 23.0)	18.7	(14.6 - 23.6)	<0.001
Staten Island	NA	(27.9 U)	27.9	(23.7 - 32.6)	31.7	(27.4 - 36.3)	27.6	(23.9 - 31.6)	26.3	(22.6 - 30.3)	19.2	(16.4 - 22.4)	18.9	(15.8 - 22.3)	16.9	(13.5 - 21.1)	<0.001
Neighborhood Health Action Center area (of School)³																	
South Bronx	NA	(NA)	NA	(35.1 - 42.0)	38.7	(32.9 - 44.8)	37.3	(32.1 - 42.9)	32.7	(29.6 - 36.0)	28.5 U	(25.4 - 31.8)	24.6	(21.8 - 27.7)	19.9	(15.0 - 25.9)	<0.001
North and Central	NA	(NA)	NA	(32.2 - 40.7)	25.9	(19.6 - 33.3)	32.5 U	(26.9 - 38.8)	29.8 *	(19.7 - 42.4)	27.5 D	(21.3 - 34.6)	20.4	(16.7 - 24.7)	16.3	(13.5 - 19.4)	<0.001
Brooklyn	NA	(NA)	NA	(28.2 - 38.1)	33.3	(28.5 - 38.5)	30.0	(24.1 - 36.7)	26.3	(21.7 - 31.5)	25.0	(19.1 - 32.1)	18.1	(12.9 - 24.7)	21.8 *	(12.2 - 36.1)	0.002
East and Central	NA	(NA)	NA	(26.4 - 33.5)	26.1	(21.5 - 31.2)	28.8	(22.3 - 36.3)	22.3	(17.5 - 27.9)	21.5 D	(19.1 - 24.1)	19.6	(16.5 - 23.0)	18.7	(14.6 - 23.6)	<0.001
Harlem	NA	(NA)	NA	(23.7 - 32.6)	31.7	(27.4 - 36.3)	27.6	(23.9 - 31.6)	26.3	(22.6 - 30.3)	19.2	(16.4 - 22.4)	18.9	(15.8 - 22.3)	16.9	(13.5 - 21.1)	<0.001
All other neighborhoods	NA	(NA)	NA	(31.0 - 34.6)	38.6 *	(29.0 - 49.2)	25.0	(20.8 - 29.8)	25.7	(19.5 - 33.1)	23.2	(16.3 - 31.9)	19.9	(12.7 - 29.8)	0.013		
South Bronx	NA	(NA)	NA	(33.4 - 40.9)	38.8	(33.4 - 44.5)	34.3	(28.3 - 40.9)	38.8	(33.4 - 44.5)	30.0	(23.6 - 37.3)	25.5 D	(21.1 - 30.4)	20.5 D	(17.7 - 23.5)	<0.001
North and Central	NA	(NA)	NA	(35.3 - 42.5)	38.0	(32.0 - 44.3)	38.8	(35.3 - 42.5)	38.0	(32.0 - 44.3)	39.8	(33.0 - 47.0)	28.3	(25.7 - 31.0)	25.1	(17.5 - 34.7)	<0.001
Brooklyn	NA	(NA)	NA	(29.5 - 37.6)	31.4	(25.5 - 38.1)	33.4	(29.5 - 37.6)	31.4	(25.5 - 38.1)	22.8	(18.7 - 27.6)	23.6	(20.4 - 27.2)	19.3	(13.6 - 26.7)	<0.001
East and Central	NA	(NA)	NA	(27.6 - 34.5)	25.9	(21.9 - 30.2)	31.0	(27.6 - 34.5)	25.9	(21.9 - 30.2)	24.0	(21.2 - 27.1)	19.5 D	(17.3 - 21.8)	18.3	(15.1 - 21.9)	<0.001
All other neighborhoods	NA	(NA)	NA	(31.0 - 34.5)	25.9	(21.9 - 30.2)	31.0	(27.6 - 34.5)	25.9	(21.9 - 30.2)	24.0	(21.2 - 27.1)	19.5 D	(17.3 - 21.8)	18.3	(15.1 - 21.9)	<0.001

Confidence intervals (CIs) are a measure of estimate precision; the wider the CI, the more imprecise the estimate.

*p-value refers to the significance of the test for trend; p-values below the significance level (0.05) appear in **bold** and indicate a statistically significant trend.

†Estimate should be interpreted with caution. Estimate's Relative Standard Error (a measure of estimate precision) is greater than 30% or the sample size is less than 50, or the 95% confidence interval half width is greater than 10, making the estimate potentially unreliable.

D When rounding to the nearest whole number, round down.

U When rounding to the nearest whole number, round up.

¹Current sexual activity: had sexual intercourse with one or more partners in the previous three months²For the purpose of this publication, Latino includes persons of Hispanic or Latino origin, as identified by the survey question "Are you Hispanic or Latino?" and regardless of reported race. Black, White, and Asian race categories exclude those who identified as Latino. "Other" category includes non-Latino students who selected American Indian/Alaska Native, Native Hawaiian/other Pacific Islander, or multiple race categories.³Neighborhood Health Action Centers: To promote health equity and reduce health disparities at the neighborhood level, the Health Department established Neighborhood Health Action Centers (formerly District Public Health Offices) in the South Bronx, East and Central Harlem, and North and Central Brooklyn, neighborhoods with high rates of chronic disease and premature death. YRBS data for Action Center areas represent teens who attend public schools in those neighborhoods.

Table 7. Prevalence of New York City public high school students whose age at first sex was under 13 years old, among those who ever had sex, by demographic and geographic characteristics, 2001 - 2015

Source: NYC Youth Risk Behavior Survey, 2009 - 2015. Data are weighted to the NYC public high school student population eligible for the survey.

Sex	2001		2003		2005		2007		2009		2011		2013		2015		linear trend
	Percent	95% Confidence Interval	Percent	95% Confidence Interval	Percent	95% Confidence Interval	Percent	95% Confidence Interval	Percent	95% Confidence Interval	Percent	95% Confidence Interval	Percent	95% Confidence Interval	Percent	95% Confidence Interval	2001-2015 p-value†
Overall	24.1	(19.6 - 29.2)	23.1	(20.4 - 26.0)	23.0	(20.2 - 26.1)	20.3	(16.9 - 24.1)	21.0	(18.8 - 23.4)	18.6	(16.5 - 20.8)	17.7	(15.4 - 20.2)	16.0	(13.0 - 19.5)	0.000
Female	12.0	(6.9 - 20.1)	10.5 U	(8.3 - 13.3)	11.1	(8.6 - 14.1)	9.3	(7.0 - 12.2)	11.7	(9.6 - 14.2)	12.0	(10.0 - 14.5)	8.7	(6.3 - 11.8)	6.2	(4.2 - 9.0)	0.074
Male	34.5 U	(26.9 - 43.1)	33.0	(29.3 - 37.0)	33.1	(28.1 - 38.5)	29.9	(24.8 - 35.6)	29.6	(26.1 - 33.2)	23.8	(21.3 - 26.5)	24.4	(20.7 - 28.4)	24.3	(19.5 - 29.8)	<0.001
Age group																	
14 and younger	31.5 U	(17.0 - 50.9)	38.8	(31.3 - 46.8)	44.5 U	(36.9 - 52.4)	39.6	(30.9 - 49.0)	36.5 U	(32.7 - 40.5)	39.3	(32.7 - 46.2)	36.7	(30.6 - 43.2)	31.8	(23.6 - 41.3)	0.701
15	26.3	(17.7 - 37.2)	26.2	(21.8 - 31.1)	28.7	(24.9 - 32.9)	30.6 *	(21.1 - 41.9)	25.4	(20.8 - 30.6)	20.7	(17.5 - 24.2)	21.2	(16.8 - 26.2)	16.7	(10.4 - 25.7)	0.008
16	27.1	(29.3 - 36.6)	22.1	(18.8 - 25.7)	19.0	(14.5 - 24.5)	14.5 D	(11.9 - 17.5)	16.2	(13.6 - 19.2)	15.3	(12.2 - 19.0)	14.0	(10.3 - 18.9)	11.7	(8.5 - 15.9)	<0.001
17	18.5 U	(12.1 - 27.3)	15.4	(12.6 - 18.7)	11.2 *	(6.1 - 19.8)	13.2	(10.1 - 16.9)	13.1	(10.0 - 16.9)	10.0	(7.8 - 12.9)	11.9	(8.5 - 16.4)	11.3	(7.3 - 17.2)	0.037
18 and older	11.5 D	(5.5 - 22.5)	17.3	(13.0 - 22.6)	15.2	(11.6 - 19.7)	12.5 U	(8.7 - 17.7)	18.8	(14.1 - 24.6)	16.8	(12.3 - 22.5)	11.8	(8.1 - 17.1)	21.1 *	(11.8 - 34.7)	0.328
Grade																	
9th grade	34.9	(31.4 - 38.5)	33.6	(29.3 - 38.3)	38.2	(32.4 - 44.3)	33.5 D	(27.8 - 39.7)	34.3	(28.8 - 40.1)	38.0	(32.6 - 43.7)	33.6	(27.4 - 40.4)	33.7	(25.0 - 43.6)	0.842
10th grade	26.1	(17.5 - 37.0)	23.3	(19.3 - 27.7)	22.1	(17.8 - 27.0)	22.1	(14.9 - 31.6)	24.1	(19.8 - 29.0)	19.2	(16.2 - 22.6)	18.8	(15.4 - 22.8)	13.9	(9.1 - 20.6)	0.006
11th grade	13.9	(9.6 - 19.8)	15.8	(12.9 - 19.2)	11.7	(9.3 - 14.5)	13.0	(10.0 - 16.7)	17.0	(14.9 - 19.3)	14.5 U	(11.0 - 19.0)	14.3	(10.3 - 19.3)	15.8	(11.0 - 22.2)	0.549
12th grade	9.1	(5.3 - 15.4)	12.9	(10.3 - 16.1)	8.9	(6.4 - 12.3)	10.9	(8.7 - 13.8)	11.3	(8.7 - 14.5)	9.3	(7.3 - 11.8)	10.9	(8.0 - 14.7)	9.8	(7.1 - 13.3)	0.861
Race/Ethnicity‡																	
Latino	23.9	(19.6 - 28.9)	20.4	(17.2 - 24.1)	21.4	(17.7 - 25.6)	19.0	(15.8 - 22.6)	20.9	(18.8 - 23.3)	20.1	(17.3 - 23.2)	17.5 U	(14.6 - 20.9)	14.7	(12.3 - 17.4)	<0.001
White, non-Latino	#	#	11.7	(7.5 - 17.7)	12.1 *	(5.4 - 25.0)	13.9	(9.3 - 20.0)	8.2	(5.7 - 11.6)	9.4	(5.9 - 14.5)	14.2	(9.1 - 21.6)	6.0 *	(3.2 - 11.0)	0.956
Black, non-Latino	32.3	(26.2 - 39.0)	29.3	(26.0 - 32.8)	27.2	(23.5 - 31.2)	23.6	(17.9 - 30.4)	25.7	(22.0 - 29.8)	19.8	(16.5 - 23.6)	20.3	(15.9 - 25.7)	21.2	(15.0 - 29.0)	<0.001
Asian, non-Latino	#	#	13.2	(8.3 - 20.4)	16.8	(9.1 - 28.9)	11.1 *	(5.6 - 20.9)	14.1 *	(6.2 - 28.9)	14.9	(9.3 - 23.1)	9.8 *	(3.8 - 22.8)	6.7	(3.9 - 11.2)	0.828
Other, non-Latino	26.9 *	(8.3 - 59.7)	25.7	(18.4 - 34.5)	28.5 D	(17.5 - 42.8)	28.8	(19.9 - 39.7)	19.1	(13.6 - 26.1)	25.7 *	(15.0 - 40.3)	26.9 *	(18.0 - 38.1)	13.7	(7.6 - 23.4)	0.306
Borough of School																	
Bronx	NA		22.2	(18.4 - 26.6)	22.4	(19.1 - 26.1)	23.1	(19.3 - 27.4)	19.1	(15.4 - 23.5)	20.1	(16.8 - 23.9)	21.5 U	(17.0 - 26.8)	16.4	(14.4 - 18.7)	0.023
Brooklyn	NA		29.0	(23.9 - 34.7)	27.5 U	(21.8 - 34.1)	24.7	(17.3 - 33.9)	23.9	(19.2 - 29.4)	20.4	(16.1 - 25.5)	16.7	(13.7 - 20.2)	18.2	(11.1 - 28.4)	0.001
Manhattan	NA		17.8	(13.0 - 23.9)	22.1	(16.9 - 28.4)	16.0	(11.8 - 21.3)	20.0	(16.3 - 24.3)	17.2	(12.1 - 23.8)	17.9	(12.4 - 25.1)	17.2	(10.8 - 26.1)	0.589
Queens	NA		21.3	(16.2 - 17.4)	21.0	(17.0 - 25.7)	17.9	(12.6 - 24.9)	21.8	(17.0 - 27.5)	17.3	(13.3 - 22.2)	15.8	(11.3 - 21.6)	12.3	(8.6 - 17.3)	0.004
Staten Island	NA		16.2	(12.6 - 20.5)	10.6	(7.1 - 15.6)	8.7	(6.0 - 12.4)	12.7	(9.5 - 16.8)	13.0	(9.6 - 17.2)	14.6	(10.9 - 19.2)	17.5 U	(12.6 - 23.9)	0.183
Neighborhood Health Action Center area (of School)‡																	
South Bronx	NA		NA		NA		22.8	(17.9 - 28.6)	21.3	(17.3 - 26.1)	22.0	(17.5 - 27.1)	22.2	(18.4 - 26.6)	18.0	(16.2 - 20.0)	0.186
North and Central Brooklyn	NA		NA		NA		20.6	(16.2 - 25.8)	25.4	(19.4 - 32.6)	25.7	(20.6 - 31.6)	26.0	(21.9 - 30.6)	19.5 D	(15.2 - 24.6)	0.840
East and Central Harlem	NA		NA		NA		14.8	(10.7 - 20.0)	22.9	(17.3 - 29.7)	16.5 U	(12.4 - 21.6)	16.4	(11.1 - 23.4)	21.2	(13.1 - 32.4)	0.586
All other neighborhoods	NA		NA		NA		20.3	(16.3 - 24.8)	20.5 U	(17.9 - 23.4)	17.7	(15.4 - 20.4)	16.7	(14.1 - 19.7)	15.4	(11.8 - 19.7)	0.028

Confidence intervals (CIs) are a measure of estimate precision; the wider the CI, the more imprecise the estimate.

†p-value refers to the significance of the test for trend; p-values below the significance level (0.05) appear in bold and indicate a statistically significant trend.

*Estimate should be interpreted with caution. Estimate's relative Standard Error (a measure of estimate precision) is greater than 30% or the sample size is less than 50, or the 95% Confidence Interval half width is greater than 10, making the estimate potentially unreliable.

#Data are suppressed due to imprecision and unreliable estimates.

D When rounding to the nearest whole number, round down.

U When rounding to the nearest whole number, round up.

‡For the purpose of this publication, Latino includes persons of Hispanic or Latino origin, as identified by the survey question "Are you Hispanic or Latino?" and regardless of reported race. Black, White, and Asian race categories exclude those who identified as Latino. "Other" category includes non-Latino students who selected American Indian/Alaska Native, Native Hawaiian/other Pacific Islander, or multiple race categories.

§Neighborhood Health Action Centers: To promote health equity and reduce health disparities at the neighborhood level, the Health Department established Neighborhood Health Action Centers (formerly District Public Health Offices) in the South Bronx, East and Central Harlem, and North and Central Brooklyn.

¶Neighborhoods with high rates of chronic disease and premature death. YRBS data for Action Center areas represent teens who attend public schools in those neighborhoods.

Table 8. Contraception at last intercourse among currently sexually active¹ New York City public high school students, 2009 to 2015

Source: NYC Youth Risk Behavior Survey, 2009 - 2015; Data are weighted to the NYC public high school student population eligible for the survey. These data are not directly comparable to results from the national Youth Risk Behavior Surveillance System.

	2009		2011		2013		2015		linear trend
	Percent	95% Confidence Interval	Percent	95% Confidence Interval	Percent	95% Confidence Interval	Percent	95% Confidence Interval	2009-2015 p-value [‡]
All									
Condom, alone or with other methods	73.4	(70.4, 76.2)	68.0	(63.7, 72.0)	67.3	(63.4, 70.9)	62.6 ^	(58.1, 66.9)	<0.001
Hormonal birth control (HBC) or long-acting reversal contraception (LARC), alone or with other methods** [§]	15.6	(14.0, 17.3)	22.4	(19.8, 25.1)	23.5 U	(21.0, 26.2)	23.2 ^	(19.4, 27.6)	0.001
Birth control pill, alone or with other methods	6.9	(5.9, 8.0)	10.4	(8.7, 12.5)	10.0	(8.3, 12.1)	11.5 ^U	(9.3, 14.3)	0.002
Emergency contraception, alone or with other methods	4.0	(2.8, 5.7)	6.5 U	(5.3, 8.0)	9.4	(7.6, 11.7)	9.8 ^	(7.8, 12.3)	<0.001
Mutually exclusive categories:									
Condom, no HBC or LARC [§]	64.9	(61.8, 68.0)	57.2	(53.2, 61.0)	55.5 D	(52.6, 58.3)	52.6 ^	(48.2, 57.1)	<0.001
HBC or LARC, no condom** [§]	7.1	(5.9, 8.5)	11.5 U	(9.7, 13.7)	11.7	(9.3, 14.7)	13.3 ^	(10.8, 16.3)	<0.001
Dual contraception: condom + HBC/LARC [§]	8.5 D	(7.1, 10.1)	10.8	(9.1, 12.8)	11.8	(9.7, 14.2)	10.0	(7.6, 13.0)	0.271
Withdrawal/other only	5.8	(4.7, 7.1)	8.0	(5.9, 10.7)	8.7	(6.5, 11.6)	8.5 ^D	(6.7, 10.6)	0.025
No contraception	13.7	(11.4, 16.3)	12.5 U	(10.4, 15.0)	12.3	(10.0, 15.0)	15.7 ◊	(13.6, 18.0)	0.283
Females									
Condom, alone or with other methods	67.7	(63.4, 71.7)	62.7	(57.8, 67.3)	61.9	(57.1, 66.4)	55.3 ^	(48.7, 61.6)	0.002
Hormonal birth control (HBC) or long-acting reversal contraception (LARC), alone or with other methods** [§]	17.3	(14.8, 20.2)	26.9	(23.5, 30.6)	29.2	(25.7, 33.1)	26.3 ^	(20.4, 33.2)	0.007
Birth control pill, alone or with other methods	6.9	(5.6, 8.4)	11.4	(9.1, 14.2)	10.9	(7.8, 15.0)	11.7 ^	(9.5, 14.3)	0.004
Emergency contraception, alone or with other methods	5.1	(3.4, 7.7)	9.2	(7.5, 11.3)	12.1	(9.5, 15.3)	10.9 ^	(7.6, 15.3)	0.003
Mutually exclusive categories:									
Condom, no HBC or LARC [§]	59.0	(54.3, 63.5)	50.1	(45.4, 54.8)	47.8	(43.5, 52.2)	44.5 ^U	(38.7, 50.5)	<0.001
HBC or LARC, no condom** [§]	8.6	(6.9, 10.7)	14.4	(11.9, 17.2)	15.2	(12.3, 18.5)	15.6 ^	(12.2, 19.7)	0.001
Dual contraception: condom + HBC/LARC [§]	8.7	(6.8, 11.1)	12.6	(10.0, 15.6)	14.1	(10.6, 18.4)	10.8	(6.9, 16.3)	0.344
Withdrawal/other only	5.7	(4.1, 7.9)	9.6	(6.9, 13.1)	8.9	(6.1, 12.7)	9.4 ^	(7.0, 12.7)	0.060
No contraception	18.0	(15.1, 21.4)	13.4	(10.9, 16.3)	14.1	(10.8, 18.1)	19.7 ◊	(15.8, 24.4)	0.494
Males									
Condom, alone or with other methods	79.8	(75.6, 83.4)	73.6	(68.1, 78.4)	72.0	(66.6, 76.9)	71.0 ^	(67.1, 74.6)	0.002
Hormonal birth control (HBC) or LARC, alone or with other methods** [§]	13.6	(11.4, 16.1)	17.5 U	(14.4, 21.2)	18.6	(15.2, 22.5)	19.7	(14.0, 27.1)	0.071
Birth control pill, alone or with other methods	6.8	(5.2, 8.7)	9.5 D	(7.4, 12.0)	9.2	(6.7, 12.5)	11.4	(7.3, 17.3)	0.095
Emergency contraception, alone or with other methods	2.7	(1.6, 4.5)	3.5 D	(2.3, 5.2)	7.1	(4.9, 10.1)	8.6 ^	(5.5, 13.1)	0.001
Mutually exclusive categories:									
Condom, no HBC or LARC [§]	71.7	(67.5, 75.6)	64.4	(58.8, 69.7)	62.2	(57.3, 66.9)	61.9 ^	(56.7, 66.8)	0.003
HBC or LARC, no condom** [§]	5.5 D	(4.0, 7.4)	8.4	(6.3, 11.1)	8.8	(5.9, 12.9)	10.6 ^	(7.5, 14.9)	0.015
Dual contraception: condom + HBC/LARC [§]	8.1	(6.2, 10.6)	9.2	(7.4, 11.3)	9.8	(7.2, 13.2)	9.1	(6.0, 13.7)	0.599
Withdrawal/other only	5.9	(4.2, 8.3)	6.4	(4.3, 9.4)	8.5 D	(5.6, 12.5)	7.3	(5.0, 10.7)	0.261
No contraception	8.8	(6.3, 12.3)	11.7	(8.6, 15.7)	10.7	(7.9, 14.4)	11.0	(8.0, 15.0)	0.437

partners in the previous three months

**Hormonal birth control (HBC) includes birth control pill, Depo-Provera, patch, ring, and emergency contraception. Long-acting reversible contraception (LARC) includes intrauterine device (IUD) and implant. Use of HBC and LARC reported as used by self or partner.

§ May include those who reported also using withdrawal.

Statistically significant change (p<.05) from: ^2009 to 2015; ◊2013 to 2015

‡p-value refers to the significance of the test for trend; p-values below the significance level (0.05) appear in **bold** and indicate a statistically significant trend.

D When rounding to the nearest whole number, round down.

U When rounding to the nearest whole number, round up.

