

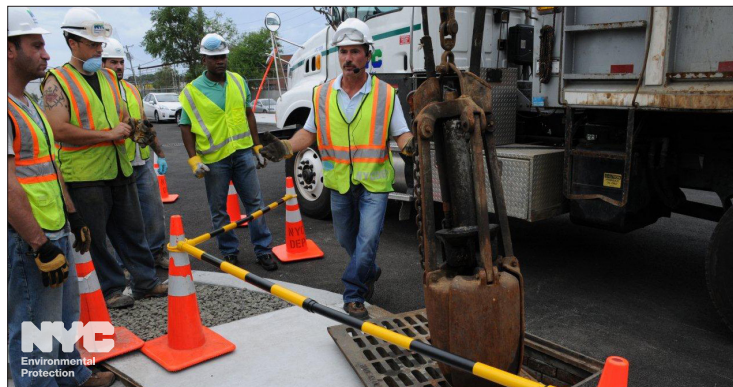
## Spotlight on Safety

### Think Safety First!

As we approach year's end, let's take a moment to reflect on some important Employee Health and Safety (EHS) programs laid out in Strategy 2011-2014.

- **Measure EHS performance and demand success:** Performance audits have been implemented throughout the department resulting in higher levels of not only EHS compliance, but better accountability, program integration, and awareness.
- **Integrate EHS compliance into every aspect of DEP operations and construction:** In the vast majority of facilities, the number and severity of EHS Audit findings continues to drop and bureau employees are more involved in the corrective action process.
- **Ensure effective EHS training and education for all employees:** Computer Based Training Programs have been integrated into DEP's training portfolio, including classes on Hazard Communication/Office Right to Know and Computer Ergonomics. In 2013, 85 percent of DEP Supervisors received skills training and the Training Course Catalog was put on The Source.
- **Encourage open, frequent, and candid communication about EHS issues:** The EHS email address, weekly Spotlight on Safety articles, and the EHS Matters newsletter provide employees with relevant and timely EHS information. DEP also hosted its first EHS Forum for staff professional development.

These initiatives contributed to DEP receiving the American Waterworks Association's (AWWA) National Safety Award for the second time in the last three years. In addition, Assistant Commissioner **Persis Luke** has been chosen to be the National Chairperson for AWWA's Environmental, Safety and Health Committee. At year's end, it is good to reflect on our past successes, but it is also a good time to consider how we can continue to contribute towards making DEP among the safest water utilities in the nation.



At DEP, everyone is responsible for safety. If you or anyone on your team is concerned about your working conditions, it's okay to ask your supervisor or your bureau's EHS liaison how they can help. If you've still got questions, you can call the EHS Employee Concerns Hotline. It's DEP's responsibility to acknowledge and fix unsafe situations, procedures, and practices. With your help, we'll not only get the job done, we'll make it safer for ourselves, our coworkers, our families, and our city.

CALL (800) 897-9677 OR SEND A MESSAGE THROUGH PIPELINE. HELP IS ON THE WAY.

## Commissioner's Corner



DEP's important role in the Catskills reaches far beyond the six reservoirs that provide New York City with clean, unfiltered water. Those reservoirs exist within a "living watershed" that is home to 50,000 people. DEP has worked with our neighbors in the watershed to strengthen their local economy in ways that are compatible with source-water protection. Partners such as the Catskill Watershed Corporation and the Watershed Agricultural Council have been invaluable in this effort by using City funding to promote local farm products, provide grants to economic development projects, and improve outdoor recreation opportunities on thousands of acres of reservoirs and water supply lands. These partnerships are key to maintaining our Filtration Avoidance Determination and providing affordable drinking water to New Yorkers.

Last Thursday, we took another big step to achieve both those goals when I joined Deputy Commissioner **Paul Rush** and Ulster County Executive **Mike Hein** to announce the City's support for a proposed 11.5-mile recreational trail that would be constructed on an existing railroad right-of-way that runs through water supply lands along the Ashokan Reservoir. Under terms of a conceptual agreement, we have committed to provide \$2.5 million for developing the proposed trail for human-powered transportation instead of rail use, provided that DEP funds are designated for projects that protect water quality and address localized erosion issues. We also committed to construct and maintain access points along the trail, including parking areas, and support Ulster County as it seeks additional local, state, and federal funds for the project.

In addition to funding for the trail and constructing the access points, DEP also plans to connect the proposed trail with other popular recreation facilities at Ashokan Reservoir. This will include establishing a dedicated lane for recreational use across the dividing weir bridge that will allow

walkers, joggers, and cyclists to safely access the proposed rail trail, the popular "frying pan" trail along the east basin, and the Route 28A promenade. More than 25,000 visitors already use the frying pan and promenade trails every year, making them among the most popular recreational paths in the region.

The recreational trail agreement underscores our commitment to support the outdoor recreation and tourism economies of the Catskills. Since 2003, we have more than doubled the amount of water supply lands that are open for recreation. That total now stands at 118,600 acres, including roughly 85,000 acres of land and 33,000 acres of water. Access to those properties has been enhanced through partnerships with watershed communities and the Catskill Watershed Corporation. DEP has also collaborated with nonprofit groups such as the Catskill Mountain Club and New York-New Jersey Trail Conference to open four trails on water supply lands in Andes, Conesville, Tompkins, and Walton. Ashokan Reservoir is currently open for fishing from approved boats and the shore during fishing season, and 3,453 acres around the reservoir are open to hunters with the required permits and licenses.

Once constructed, the Ulster County rail trail will provide beautiful views of Ashokan Reservoir and the Esopus Creek as it flows into the reservoir. Ashokan Reservoir was placed into service in 1915 and is the oldest of New York City's reservoirs in the Catskills. It holds 128 billion gallons of water that flow into the reservoir from a 255-square-mile drainage basin. It has the largest surface area of any reservoir in the Catskills, totaling roughly 8,300 acres. The reservoir provides about 40 percent of the 1.1 billion gallons of drinking water used by New York City and upstate communities every day.

I would like to thank **Ira Stern** and **Adam Bosch** from our Bureau of Water Supply and **May Chin** from our Bureau of Legal Affairs for working with our partners in Ulster County to support responsible recreation that aligns with our water quality goals.

## Focus on the Field



Recently, the American Society of Civil Engineers adopted a new industry standard for rating the sustainability of infrastructure projects called the Envision™ system. Envision™ is the product of a joint collaboration between the Zofnass Program for Sustainable Infrastructure at Harvard University and the Institute for Sustainable Infrastructure. Envision™ provides a holistic framework for evaluating and rating the community, environmental and economic benefits of all types and sizes of infrastructure projects. It evaluates, grades, and gives recognition to infrastructure projects that use transformational, collaborative approaches to assess the sustainability indicators over the course of the project's life cycle.

Environmental Engineer **Dennis Stanford** and Civil Engineer **Floren Poliseo**, both with the Bureau of Engineering, Design and Construction (BEDC), are at the forefront of bringing the Envision™ system to DEP's capital projects. "The goal is to develop and implement sustainable designs into our capital program," says Stanford. Both were among the first in the nation to complete the Envision™ Independent Certifier training and they have shared their knowledge with their colleagues in BEDC. To date, nearly 30 BEDC staffers have passed the online Envision™ training course.

Stanford heads the department's Panel for Sustainable Infrastructure, an inter-bureau committee that focuses on incorporating sustainable practices into capital projects and Poliseo is a key member of the team. "In meeting with my design teams, we discuss all the elements of a project to see where we can make improvements based on the Envision™ model,"

she said. The Envision™ system has already been applied to three recent DEP projects—the Hanna Street Pump Station, the Queens groundwater system, and work on the Rondout/ West Branch Bypass Tunnel.

"Envision™ looks at everything from efficient lighting, to stormwater management, to the use of recycled materials, to a projects' resiliency to climate change, even to how workers commute to the facility," said Deputy Commissioner **Kathryn Mallon**. "Dennis and Floren really deserve a lot of credit for getting this initiative off the ground and supporting our forward looking push to incorporate sustainable practices in all of our infrastructure projects."

Stanford began his career with DEP in 2007. He grew up in Peekskill, New York, near the Croton Watershed and now lives in Astoria, Queens. He serves as the Chair of the New York Water Environment Association's (NYWEA) Metropolitan Chapter's Young Professionals Committee and is a member of the Sustainability Committee. In his free time he enjoys camping and cycling.

Poliseo got her start at DEP in 2010 after spending 15 years living in Atlanta. She is originally from Tallahassee, Florida and currently resides in Brooklyn. She is involved with the global non-profit Water for People, NYWEA's Sustainability Committee and Green Infrastructure Task Force, and the Institute for Sustainable Infrastructure's Intergovernmental, Nonprofit and Global Affairs Committee. She loves the outdoors and in her free time enjoys running—particularly on trails, as well as travelling.

## Gilboa Project Ahead of Schedule



The \$400 million full-scale rehabilitation of Gilboa Dam is two years ahead of schedule after an extremely productive construction season in 2013. Since the project began, approximately 87,500 cubic yards of concrete have been added to the face of the dam, which is now 80 percent complete. Workers have also completed 12 of the 14 concrete slab sections below the dam's spillway, and installed post-tensioned anchors and structural concrete at the west training wall. Similar work at the east training wall is also nearing completion. The rehabilitation, originally projected to be completed in 2016, is now expected to be substantially complete by the end of summer 2014. Click [here](#) to see additional photos.

## Last Day to Donate to the Toy Drive

**BRING A SMILE TO A CHILD:** Please take part in DEP's Holiday Toy Drive by donating new and unwrapped toys, sports equipment or accessories for young people from tots to teens.

Please drop off toys with your [bureau coordinators](#). **Final date to donate has been extended to Friday, December 20<sup>th</sup>.**

## 'Tis the Season



Last week, hundreds of employees gathered at Lefrak headquarters to celebrate the holidays by sharing delicious food from Dallas BBQ and dancing to music provided by celebrity DJ Mary Mac. Special thanks to the following employees for helping to organize the event and ensure its success: **Adrienne Blanford, Nicole Devito, Helene Amato, Kimberly Cusumano, Lenora Smith, Cavita Lewis, Robin Turner, Joe Sokolowski, Yanina Panchishina, Samuel Somerville, James Cuggy, Keino Leitch, Colin Abrams, Hortense Taylor, Abigail Taylor, Zoe Ann Campbell, Diana Chernov, and Grace Pigott.** Click [here](#) to see more photos.

**We welcome your feedback! To submit an announcement or suggestion, please email us at: [newsletter@dep.nyc.gov](mailto:newsletter@dep.nyc.gov).** 