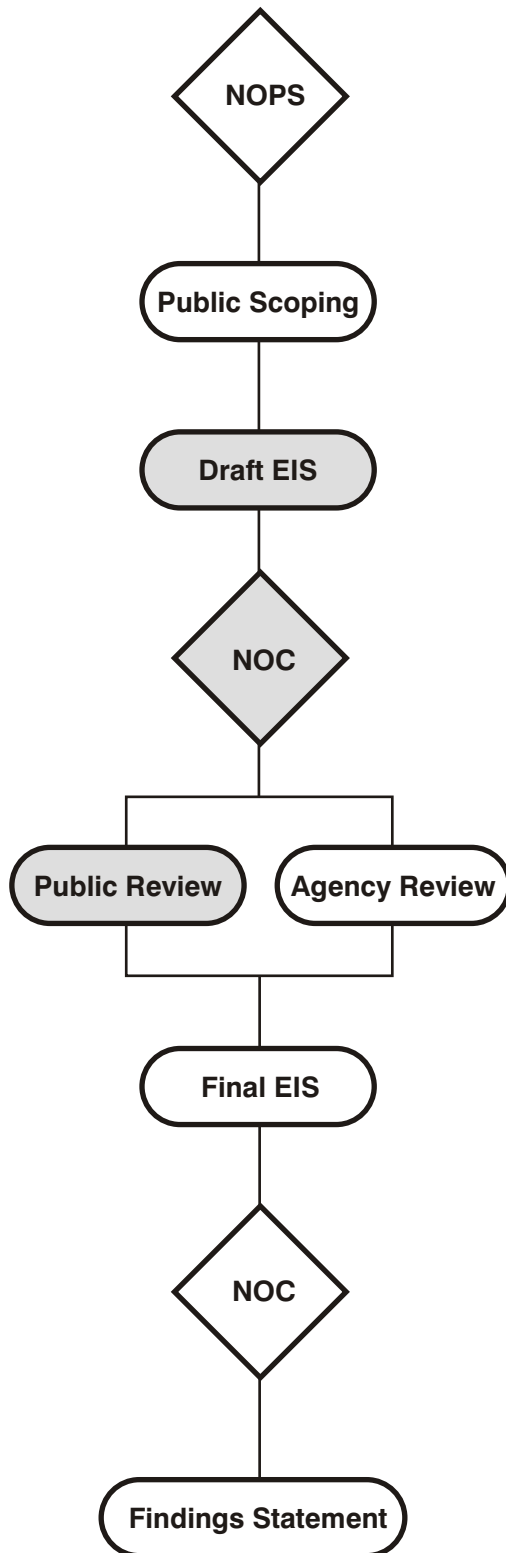




# NEW SOLID WASTE MANAGEMENT PLAN

## FACT SHEET NO. 1 Department of Sanitation (DSNY) Public Involvement



### Notice of Public Scoping (NOPS)

In May 2004, a NOPS was issued to open the public scoping process and announce the City's intent to prepare an Environmental Impact Statement (EIS) for the New Solid Waste Management Plan (New SWMP). This notice was published in the *City Record* and the *Environmental Notice Bulletin* 30 days before the first scoping meeting was held and in numerous community based newspapers.<sup>1</sup>

### Public Scoping

An early and open process for determining the scope and identifying the significant issues related to the proposed action. The City held ten public meetings on the Draft Scoping Document for the Draft EIS during a seven week comment period. Over 850 people attended 10 Public Scoping meetings in June/July 2004, and the hundreds of comments received were considered in the preparation of the Final Scoping Document for the New SWMP Draft EIS issued in October 2004.

### Draft EIS

A draft document that discloses the results of the analysis of the environmental consequences of the proposed action. The Draft EIS for the New SWMP was published in October 2004. Copies were mailed to involved and interested parties, placed on the DSNY web site and made available at the public repositories.

### Notice of Completion (NOC) of Draft EIS

A formal notice that announced the completion of the Draft EIS for the New SWMP and opened the Draft EIS comment period. This notice, published in the *Environmental Notice Bulletin* on October 22, 2004, marked the beginning of the Draft EIS comment period. A second notice was published in mid-November to provide notice of the schedule for the 8 Draft EIS public hearings and the extension of the public comment period.<sup>2</sup>

### Public Review

The City will receive comments at eight Draft EIS public hearings, with at least one public hearing in each borough. The hearings are being held in communities that host facilities/sites at which the City proposes to containerize and export waste.

### Final EIS

The City will consider substantive comments received during the DEIS comment period. The Final EIS for the New SWMP, expected to be issued in February/March 2005, will set forth comments received and responses thereto, as well as revised text, as appropriate.

### Notice of Completion (NOC) for Final EIS

A formal notice that announces the completion of the Final EIS for the New SWMP will be published after the Final EIS is issued.

### CEQR Findings Statement

A document that summarizes the findings reached on the proposed action will be issued between 10 and 30 days after the Final EIS for the New SWMP is published.

<sup>1,2</sup>In accordance with the New York State Department of Environmental Conservation's (NYSDEC) Environmental Justice (EJ) and Permitting Policy Document, formal written notices were also provided in readily available community-based newspapers. In addition, the DEIS comment period has been extended from 30 days to more than 90 days to promote fair involvement of all people in DSNY's environmental review and the NYSDEC permit process.

### DSNY Public Involvement

The New York State Department of Environmental Conservation (NYSDEC) policy on Environmental Justice (EJ) and Permitting (EJ Policy) promotes the fair involvement of all people in the NYSDEC environmental permit process. DSNY has chosen to apply the EJ Policy to the environmental review of the New SWMP and to the NYSDEC permitting processes required for solid waste management facility permits. DSNY has developed and implemented an enhanced public participation and outreach program (EJ Program) to seek input and share information on the New SWMP Draft EIS and facilities for which DSNY is required to obtain a NYSDEC permit. Upon completion of the EJ Program, DSNY will submit a report detailing activities occurring in each community.

### EJ Program

DSNY's EJ Program includes enhanced public outreach, information dissemination, translation/interpretation services, and community meetings accessible to each EJ project area. To date, DSNY has:

#### PUBLIC SCOPING

- Worked with Community District Managers to identify unique needs of each community, compile stakeholder mailing lists, and coordinate meeting venues;
- Established a toll-free information hotline;
- Published Display Advertisements in 12 newspapers, including in Spanish and Korean in *El Diario*, *Ming Pao Daily News* and the *Korean Times*;
- Distributed written information to over 2,800 stakeholders;
- Established 20 easily accessible public document repositories;
- Conducted 10 Public Scoping meetings in June/July 2004;
- Provided simultaneous or consecutive Spanish interpreter services at 8 of 10 Public Scoping meetings;
- Translated outreach materials into Spanish, Mandarin Chinese, and Korean for distribution;
- Issued a compendium of comments received; and
- Included a 30+ page comment summary and responses section in the Final Scoping Document.

#### INTERIM PERIOD

- Responded to inquiries received on the toll-free hotline;
- Expanded stakeholder lists to include Public Scoping meeting attendees and speakers, commentors and other contacts;
- Added two repositories and updated repositories with public documents; and
- Considered Public Scoping comments in DEIS preparation.

#### DEIS HEARING

- Worked with Community District Managers to select Public Hearing dates and venues;
- Distributed written information to over 3,200 stakeholders;
- Published display advertisements in the *City Record*, *Environmental Notice Bulletin*, the *New York Post*, *Staten Island Advance*, and *El Diario*;
- Provided an extended DEIS public comment period (October 22, 2004, to January 24, 2005); and
- Prepared translated outreach materials and provided simultaneous or consecutive interpreter services at the DEIS public hearings, as appropriate.

---

As defined by NYSDEC, EJ communities are census block groups or contiguous areas which have 1) a low-income population equal to or greater than 23.59% of the total population, and/or 2) a minority population equal to or greater than 51.1% in an urban area. Minority populations are identified by the U.S. Census Bureau as Hispanic, African-American or Black, Asian and Pacific Islander or American Indian. The percent thresholds for low-income and minority populations rely on 2000 Census data.