

# Thirty-Ninth Annual Awards for Excellence in Design





# **Thirty-Ninth Annual Awards for Excellence in Design**

Thursday, June 10, 2021





June 10, 2021

Dear Friends:

It is a great pleasure to welcome everyone to the Public Design Commission's 39th Annual Awards for Excellence in Design.

New York has always been a global leader of innovation in art, architecture, and infrastructure, and my administration remains committed to channeling our city's endless reserves of creativity and ingenuity into projects that enhance the quality of life for communities across every borough. The New York City Public Design Commission is an invaluable ally in this effort, and today, it will continue its tradition of highlighting impressive new works from diverse sectors that will make New York a healthier, greener, and stronger city.

Throughout the COVID-19 pandemic, New York's beautiful parks have served as havens for New Yorkers to gather safely with their loved ones and enjoy active lifestyles. In this spirit, this year's awards will recognize these vital resources and the design teams that ensured they could support the residents of our city during these unprecedented times. The winning projects include the construction and reconstruction of new green spaces, playgrounds, and recreation areas, vital library renovations, a stunning stainless-steel sculpture, an expansion of the NYC Public Health Laboratory that will prepare us to prevent and combat future pandemics, and many other revolutionary plans. As you come together virtually to celebrate these outstanding designs, I applaud all of the exceptional artists, architects, and design professionals being honored today for maintaining New York's reputation as a beacon of cutting-edge invention and for their unwavering commitment to forging a brighter tomorrow.

On behalf of the City of New York, congratulations to today's award recipients. I offer my best wishes for a wonderful event and continued success.

Sincerely,

A handwritten signature in black ink, appearing to read "Bill de Blasio".

Bill de Blasio  
Mayor





### **Public Design Commission of the City of New York**

The Public Design Commission (PDC) is an advocate for innovative, sustainable, and equitable design of the public realm. As New York City's design review agency, the PDC reviews hundreds of proposals each year, including permanent buildings, parks, open spaces, and art on City-owned property. The PDC comprises 11 members who serve pro bono and meet monthly to review and vote on projects that are submitted by City agencies. Members include an architect, landscape architect, painter, sculptor, and three lay members, as well as representatives from the Brooklyn Museum, Metropolitan Museum of Art, the New York Public Library, and the Mayor. When reviewing designs, the PDC considers an array of design parameters such as the unique history and context of the site, durability and resiliency of materials, and how to successfully achieve the desired function and programs so that the built project can best serve New Yorkers.

### **Annual Awards for Excellence in Design**

Since 1983, the Public Design Commission has recognized well-designed public projects with its Annual Awards for Excellence in Design. The winning projects are selected from the submissions reviewed by the Commission the previous year and exemplify best practices in public design. These projects range in size from large scale mixed-use developments to prototypical bioswales, and incorporate green infrastructure, waterfront resiliency, accessibility, innovative materials, creative planning, and sustainability.

### **Pandemic Recovery and the Public Realm**

Over the past sixteen months, the global COVID-19 pandemic has underscored the importance of our public spaces for the health and well-being of New Yorkers. Our city's parks, plazas, and streetscapes have provided safe spaces throughout this time for recreation, civic action and respite when we could not gather inside. For many in the city, local parks became their backyards, living rooms, and gyms.

We share a renewed appreciation for those who care for the public realm, ensuring our parks retain their beauty and usefulness during this time of crisis. In celebrating this year's Design Awards, we recognize especially the many partner organizations who raise funds and organize volunteers, as well as the thousands of front line workers who were out there every day cleaning up after yesterday's picnics. Their civic stewardship is commendable and deserves our heartfelt praise.

The pandemic, however, also highlighted inequities in access to open space, economic systems, and health resources. As New York City recovers, we must dedicate ourselves to implementing more equitable ways in which our open spaces are planned, designed, used, and responsive to a diversity of community needs across all five boroughs. Building upon frameworks created throughout the de Blasio Administration and the strategies outlined in OneNYC, many of our agency colleagues and public realm organizations are actively working on articulating guidelines and identifying resources for a more inclusive future city. We look forward to engaging with them over the course of the coming year, including with the next in our *Designing New York* series: *Streetscapes for Wellness*.



# Reconstruction of Grant Park

Grant Avenue between East 169th Street and East 170th Street, Bronx

A project of the Department of Parks & Recreation and the Department of Transportation

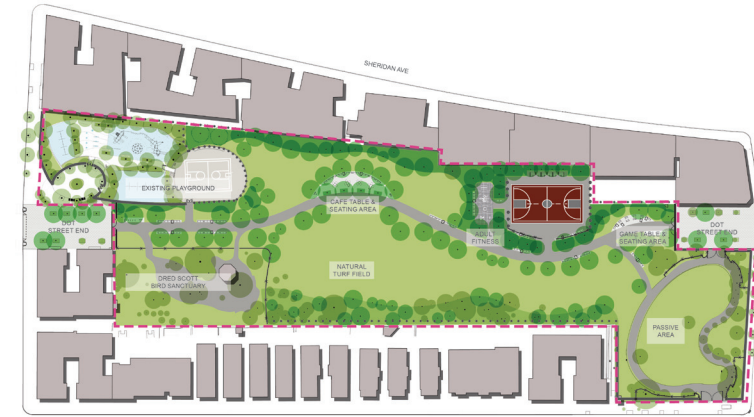
## Stantec

As envisioned by the Jerome Avenue rezoning initiative, the Grant Park reconstruction converts a portion of the Grant Avenue roadbed into green space to integrate two previously bifurcated parks into one larger and more cohesive public open space. The roadbed is replaced by a central pathway that meanders through the park with paths connecting to various program areas. Drop curbs create ADA accessible entrances at each street end.

Designed to serve the growing community, the 4.7-acre park design features a natural lawn for passive recreation and field games, shaded areas for seating and gathering, and an active recreation zone with a full-size basketball court and adult fitness area. The project also provides a protected home for the Dred Scott Bird Sanctuary, which is sited within the park and was created by community member Troy Lancaster, who more than 20 years ago transformed an abandoned lot into a garden area with native plants that attract songbirds.

## Design Team

**Stantec** Donna Walcavage, Principal; Thomas A. Hammerberg, Senior Landscape Architect; Gloria Lau, Senior Landscape Architect; Vivienne Edwards, Senior Associate; Sylvia Barnett, Associate; April Schneider, Associate; Elizabeth Wu, Landscape Architectural Designer; Adriana Hidalgo, Landscape Architectural Designer; Haikun Xu, Landscape Architectural Designer; Anna Schmiedicke, Senior Environmental Engineer; Hugh Goode, Civil Engineering Designer; Madison McCoy, Civil Engineer In Training; Mike Loux, Project Coordinator **SiteWorks** John Payne, Principal; Garrett Ray, Certified Arborist; Andrew Novitsky, Landscape Designer **Department of Parks & Recreation** Mitchell J. Silver, Commissioner; Thérèse Braddick, Deputy Commissioner for Capital Projects; Mark Focht, Deputy Commissioner & Chief Operating Officer; Iris Rodriguez-Rosa, Bronx Borough Commissioner; Vincent Cirrito, Assistant Commissioner for Landscape Architecture Program Management; Nancy Prince, Chief of Landscape Architecture; Meredith Griffin, Chief of Landscape Program Management; Nicholas Molinari, Chief of Planning & Neighborhood Development; Andrew Penzi, Team Leader; Michael Ortiz, Director of Capital Projects; Renata Sokolowski, Director of Landscape Architecture; Ruby Wei, Director of Specifications; Doug Sessler, Director of Landscape Construction; Kay Zias, Director of Environmental Remediation; Tara Valenta, Deputy Director of Landscape Architecture; Paul Rubé, Project Manager; Arsheen Ehtesham, Project Manager for Environmental Remediation; Fern Siew, Specifications Writer; Jerome Thorpe, Capital Arborist; Darryl Milton, Project Planner; Antonios Michelakis, Senior GIS Specialist; Sheena Brown, Public Design Commission Liaison **Department of Transportation** Henry Gutman, Commissioner; Polly Trottenberg, Former Commissioner; Margaret Forgione, First Deputy Commissioner; Joseph Jarrin, Executive Deputy Commissioner; Nivardo Lopez, Bronx Borough Commissioner; Eric Beaton, Deputy Commissioner of Transportation Planning & Management; Elisabeth Franklin, Associate Commissioner of Budget & Capital Program Management; Sean Quinn, Assistant Commissioner of Street Improvement Programs; Terra Ishee, Director of Pedestrian Unit; Paul Mercurio, Assistant Director for Long Range Team of Pedestrian Unit; Mia Moffett, Senior Project Manager; Matt Arancio, Director of Community Affairs & Planning; Leslie Wolf, Executive Director of Capital Planning; Chris Hamby, Director of Project Initiation; Gavin Barber, Director of Capital Planning; Rachel Federlin, Bronx Borough Planner; Neil Gagliardi, Director of Urban Design; Nicholas Pettinati, Deputy Director of Urban Design & Public Design Commission Liaison





# Reconstruction of Soccer Fields at the Red Hook Recreation Area, Phase IV

Clinton Street, Bay Street, and Court Street, Brooklyn

A project of the Department of Parks & Recreation

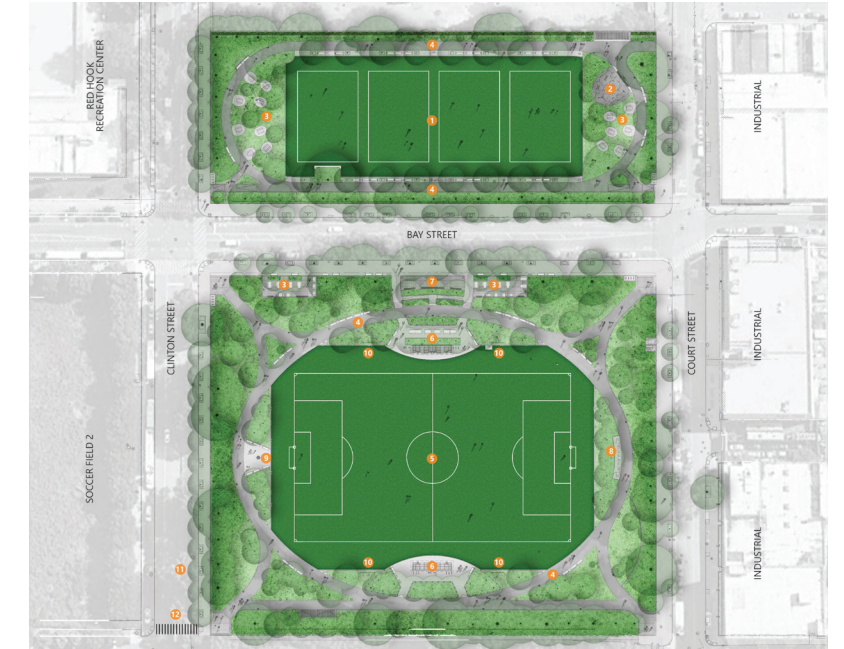
## Abel Bainnson Butz, LLP

This portion of the Red Hook Recreation Area reconstruction is the final phase of a 36-acre remediation project to transform a contaminated former industrial site and popular neighborhood park into a borough and city-wide destination. The project incorporates storm resiliency interventions for long-term functionality as well as park-wide public realm enhancements to provide a welcoming experience for all.

Spanning 7.33-acres, the existing fields, running track, and adult fitness area will be reconstructed to improve both passive and active recreation for multi-generational users. Soccer Field 1 provides a full-size synthetic turf field and spectator plazas, while Field 6 provides four youth soccer fields with family-oriented amenities such as picnic tables and fitness equipment. A central corridor with enhanced accessibility connects to the other sections of the park as well as to the streetscape along Bay Street, which includes enhanced gathering spaces with a variety of seating options to accommodate the popular Food Truck Marketplace.

## Design Team

**Abel Bainnson Butz, LLP** John Butz, RLA, Principal-In-Charge & Lead Designer; James Crocker, Senior Civil Engineer & Project Manager; Brian C. Meneghin, Senior Landscape Architect; Slavica Mickovic, Senior Landscape Architect & Arborist; Felix Law, Senior Design Technician; Deanna Lu, Landscape Designer & Arborist; Tyler Newborn, Landscape Designer & Arborist  
**TRC Companies** James Peronto, Principal Engineer; Jennifer L. Miranda, Program Manager; Wes D. Lindemuth, Senior Project Manager; Henry Delgado, Senior CAD Designer  
**Matrix New World Engineering** Ahmed Osman, Civil & Structural Engineer Project Manager; Jei Chon, Civil Engineer; Mike Soltys, Structural Engineer  
**DVL Consulting Engineers** Hector Mena, President; Darshan Kariappa, Electrical Engineer; Asrar Wasay, Electrical Engineer; Mohamed Zedan, Plumbing & Fire Protection Project Engineer  
**Oweis Engineering** James Malak, Geotechnical Engineer & Senior Project Manager  
**Department of Parks & Recreation** Mitchell J. Silver, Commissioner; Thérèse Braddick, Deputy Commissioner for Capital Projects; Mark Focht, Deputy Commissioner & Chief Operating Officer; Martin Maher, Brooklyn Borough Commissioner; Vincent Cirrito, Assistant Commissioner for Landscape Architecture Program Management; Nancy Prince, Chief of Landscape Architecture; Meredith Griffin, Chief of Landscape Program Management; David Martin, Team Leader; Terry Naranjo, Director of Landscape Architecture; Chris Syrett, Director of Landscape Architecture; Chris Yandoli, Director of Capital Projects; Ruby Wei, Director of Specifications and Estimating; Kay Zias, Director of Environmental Remediation; Jeff Martin, Deputy Director of Landscape Architecture; Imelda Bernstein, Senior Landscape Architect; Emmanuel Thingue, Senior Landscape Architect; Allaire O'Connor, Engineering Project Manager; Greg Losapio, Arborist; Daniel Motter, Assistant Civil Engineer; Lindsay Quartini, Senior Project Manager; Michael Kralovich, Capital Projects Analyst; Judy Tung, Senior Project Manager for Design; Sheena Brown, Public Design Commission Liaison





# Construction of Bushwick Inlet Park, Motiva Parcel

Kent Avenue between North 14th Street and North 15th Street, Brooklyn

A project of the Department of Parks & Recreation

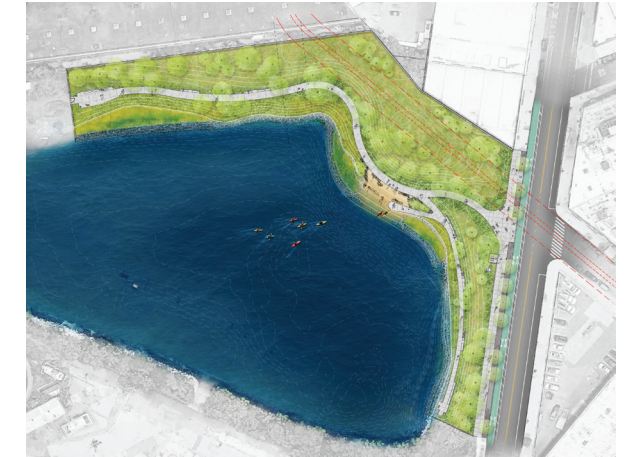
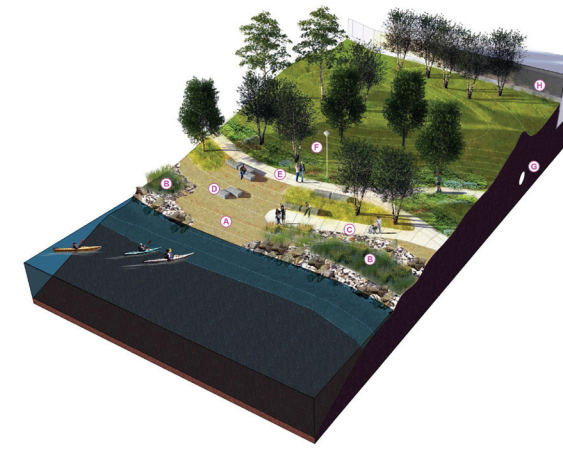
## Abel Bainnson Butz, LLP

A critical component of a larger waterfront park initiative and in line with the Williamsburg-Greenpoint Master Plan, this 1.9-acre Bushwick Inlet Park Motiva parcel design will remediate a post-industrial landscape that is currently overgrown and fenced off, providing public access while restoring the local ecosystem. The design is inspired by the site's earliest history, when the area was a mix of meadows, forest uplands, and salt marshes at the water's edge.

The project incorporates naturalized treatments to stabilize the shoreline and provide opportunities for passive recreation in the upland areas. Undulating organic coastal geometries integrate tidal marsh wetland plantings with an interwoven and strategically positioned revetment. A continuous esplanade includes observation points and a kayak launch for more active pursuits. At the northern edge, the esplanade accounts for a future connection to the forthcoming Monitor Museum.

## Design Team

**Abel Bainnson Butz, LLP** Terri Burger, Partner & Lead Designer; David Weissman, Principal & Project Manager; Brian Meneghin, Senior Landscape Architect; Felix Law, Senior Design Technician; Taylor Burgess, Landscape Designer; Deanna Lu, Landscape Designer & Arborist; Tyler Newborn, Landscape Designer & Arborist **Matrix New World Engineering** Nicholas DeCotiis, Senior Engineer; Robert DeCotiis, Senior Engineer; Rejina Sharma, Ecologist & Regulatory Specialist **TRC Companies** Jim Peronto, Principal Engineer; Wes Lindemuth, Senior Project Manager; Lindsay O'Hara, Senior Project Manager; Henry Delgado, Senior CAD Designer **DVL Consulting Engineers** Hector Mena, President; Mohamed Zedan, Plumbing Engineer; Asrar Wasay, Electrical Engineer **Oweis Engineering** James Malak, Senior Geotechnical & Project Manager **Department of Parks & Recreation** Mitchell J. Silver, Commissioner; Thérèse Braddick, Deputy Commissioner for Capital Projects; Mark Focht, Deputy Commissioner & Chief Operating Officer; Martin Maher, Brooklyn Borough Commissioner; Vincent Cirrito, Assistant Commissioner for Landscape Architecture Program Management; Nancy Prince, Chief of Landscape Architecture; Meredith Griffin, Chief of Landscape Program Management; David Martin, Team Leader; Terry Naranjo, Director of Landscape Architecture; Chris Syrett, Director of Landscape Architecture; Chris Yandoli, Director of Capital Projects; Denise Mattes, Deputy Director of Landscape Architecture; Erik Linsalata, Deputy Director of Engineering; Randee Stewart, Consultant Project Manager; Mary Salig, North Brooklyn Parks Director; Michael Kralovich, Capital Projects Analyst; Judy Tung, Senior Project Manager for Design; Sheena Brown, Public Design Commission Liaison





# Reconstruction of the Pool and Rink at the Harlem Meer

Central Park between East Drive and the Harlem Meer, Manhattan

A project of the Department of Parks & Recreation and the Central Park Conservancy

**Central Park Conservancy In-house Design**  
**Susan T. Rodriguez Architecture & Design**  
**Mitchell Giurgola**

The capstone effort of a decades-long commitment to restore the northern end of Central Park, this project replaces a failing and oversized facility with a stunning yet modest pool and rink structure to provide a vital resource for the surrounding community of Harlem.

Inspired by Central Park's original visionary and landmarked design as well as the tradition of fusing architecture and landscape, the new facility is built into the topography of the site with landscape and park paths extending across the rooftop to create a scenic overlook. Below, a light-filled gathering space with large floor-to-ceiling glass doors, punctuated by slender wood columns, opens onto the pool deck.

The oval-shaped pool, which will serve as a flexible recreation space during the shoulder seasons and an ice-skating rink in winter, is framed by a low retaining wall enveloped by a landscape berm. Between the berm and the Park Drive, a stream course and park path displaced by the construction of the existing facility will be re-established, restoring the continuity of the landscape. The Meer shoreline will be naturalized, and a waterside pergola and boardwalk through freshwater marsh plantings will support nature-based recreation.

## Design Team

**Central Park Conservancy** Elizabeth W. Smith, President & CEO; Christopher J. Nolan, Chief Landscape Architect; Lane Addonizio, Vice President of Planning; Sandra Huber, Vice President of Program & Project Management; Bob Rumsey, Studio Director for Landscape Architecture; Steven Bopp, Senior Project Manager for Landscape Architecture; John Reddick, Director of Community Engagement Projects; Liz Kushner, Landscape Architect; Grey Elam, Project Planner & Landscape Architect; Brian Purcell, Project Engineer; Jianing Tao, Assistant Landscape Architect; Jacob Fiss-Hobart, Assistant Landscape Architect; Jordan Warner, Assistant Landscape Architect **Susan T. Rodriguez Architecture & Design** Susan T. Rodriguez, Principal; Amy Maresko, Architect; Sonia Flamborg, Architect; Josh Homer, Architect; George Switzer, Architect; Megan Friedman, Architect; Duncan White, Architect; Lucy Flieger, Intern Architect; Colin Matthews, Intern Architect **Mitchell Giurgola** John Doherty, Partner; Carl Gruswitz, Senior Associate; Angela Fisher, Associate; Jaqueline Kow, Architect; Melida Marte, Architect; Catherine Vera, Architect; Jonathan Walston, Architect; Ying Xu, Architect; Colin Embrey, Intern Architect; Plub Warnitchai, Intern Architect **Langan** Mark Seel, Senior Associate; Jerome Secares, Associate; Timothy Ward, Associate; Rachel Belsky, Associate; Robert March, Senior Project Scientist; Amy Beri, Senior Staff Engineer; Na Jin, Senior Staff Engineer; Andrew Mitchell, Environmental Planner **McLaren Engineering** Peter Koklanos, Vice President; Jesse Chrimer, Senior Associate; Brendan Kelly, Associate **Séamus Henchy and Associates** Séamus Henchy, President; Chris Norfleet, Project Director; Paul Golden, Project Director; Miguel Olivarez, Project Manager **Stantec** Jim Maland, Senior Associate **LERA Consulting Structural Engineers** Dan Sesil, Partner **Loring Consulting Engineers** Steve Kenah, Principal **Atelier Ten** Ben Shepherd, Director **Werner Sobek** Enrica Oliva, Partner; Michele Andaloro, Project Manager **James R. Gainfort Consulting Architects** Jim Gainfort, Principal **Robert Schwartz and Associates** Robert Schwartz, Principal **Brandston Partnership** Scott Matthews, Senior Consulting Partner **Department of Parks & Recreation** Mitchell J. Silver, Commissioner; Liam Kavanagh, First Deputy Commissioner; Thérèse Braddick, Deputy Commissioner for Capital Projects; Mark Focht, Deputy Commissioner & Chief Operating Officer; William T. Castro, Manhattan Borough Commissioner; Vincent Cirrito, Assistant Commissioner for Landscape Architecture Program Management; Nancy Prince, Chief of Landscape Architecture; Meredith Griffin, Chief of Landscape Program Management; Desmond Spillane, Team Leader; Leslie Peoples, Director of Landscape Architecture; Katherine Riley, Senior Project Manager; Mitchel Loring, Senior Project Planner; Sheena Brown, Public Design Commission Liaison





# Reconstruction of Gorman Playground

84th Street, 25th Avenue, 85th Street, and 30th Avenue, East Elmhurst, Queens

A project of the Department of Parks & Recreation

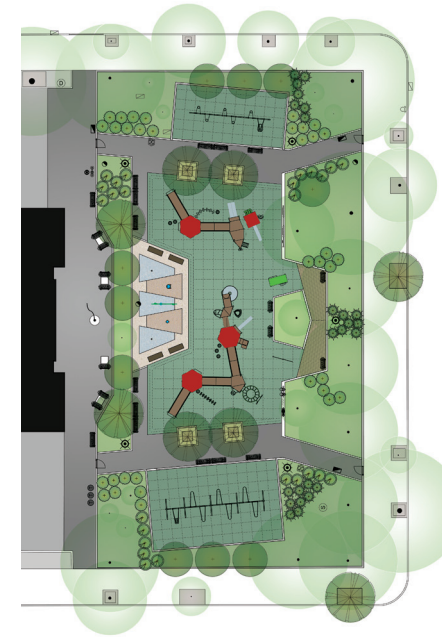
## DPR In-house

Exemplifying a commitment to inclusive play and universal design, the Gorman Playground reconstruction will provide recreation opportunities for a wide range of ages and abilities. The play areas feature four interconnected zones for various user-groups, while the play structures themselves feature multiple accessible ramps as well as a variety of slides and climbers. Separate spaces off the main play area provide a more intimate play experience with lower sensory stimulation, and companion seating is integrated throughout.

The spray shower, which will double as a seating area and free play space during cooler months, includes decorative sea animals and in-ground spray features. Plantings were chosen for both seasonal and sensory interest, and the siting of program spaces throughout the playground prioritizes the protection of existing trees and increased surface permeability for improved stormwater retention.

## Design Team

**DPR In-house** Imelda Bernstein, Project Lead & Landscape Architect; Nancy Prince, Chief of Landscape Architecture; Diane Dreier, Director of Landscape Architecture; James Mituzas, Director of Landscape Architecture; Bryan Cantwell, Queens Deputy Design Director; Marta Goracznik, Assistant Landscape Architect **Department of Parks & Recreation** Mitchell J. Silver, Commissioner; Thérèse Braddick, Deputy Commissioner for Capital Projects; Mark Focht, Deputy Commissioner & Chief Operating Officer; Michael Dockett, Queens Borough Commissioner; Vincent Cirrito, Assistant Commissioner for Landscape Architecture Program Management; Meredith Griffin, Chief of Landscape Program Management; Eric Mattes, Team Leader; Ruby Wei, Director of Specifications & Estimating; Kevin Moulthrop, Specifications Writer; Yelena Lyubarskaya, Senior Environmental Engineer; Heidi Maschino, Senior Civil Engineer; Swithin Titus, Project Administrator; Di Tan, Administrative Assistant; Emma Reakes, Capital Projects Analyst; Joyce Lai, Assistant Environmental Engineer; Luis Gualpa, Assistant Civil Engineer; Ashok Gupta, Assistant Electrical Engineer; Arsheen Ehtesham, Environmental Project Manager; Eugenia Leonidou, Senior Abatement Project Manager; Michael Kralovich, Capital Projects Analyst; Judy Tung, Senior Project Manager for Design; Sheena Brown, Public Design Commission Liaison





# Reconstruction of Dongan Playground

Adjacent to P.S. 52, Dongan Hills Avenue, Mason Avenue, and Buel Avenue, Staten Island

A project of the Department of Parks & Recreation

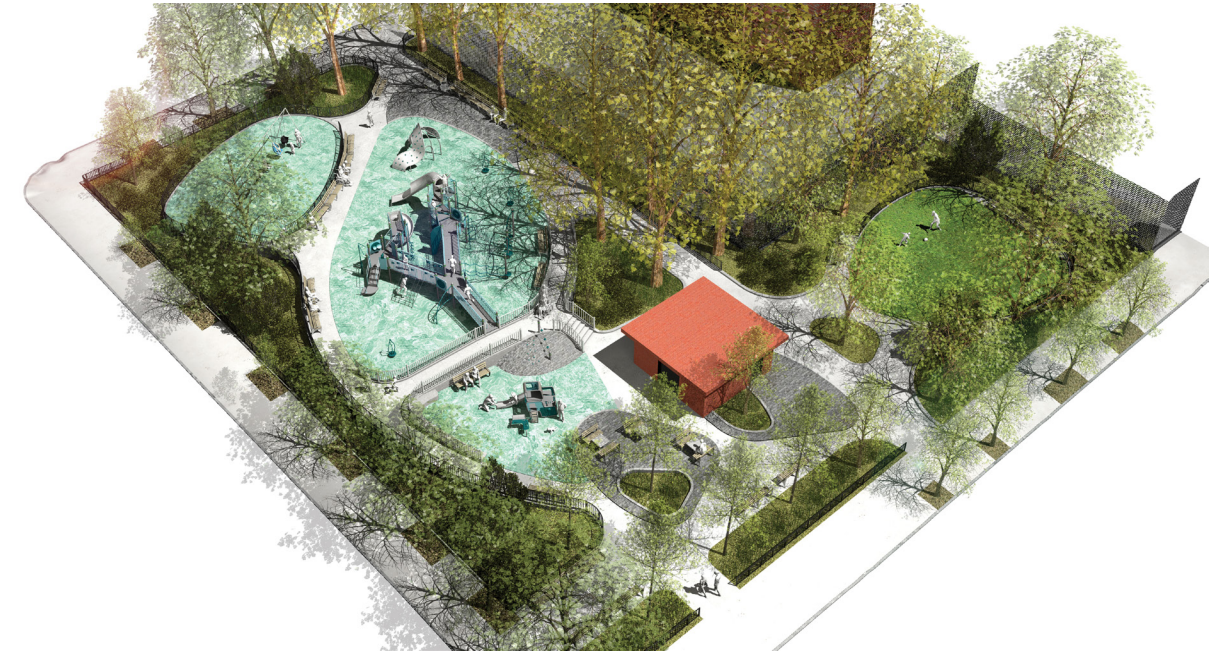
## DPR In-house

Focused on adaptive strategies for building in the floodplain while maintaining critical useable open space, the reconstruction of Dongan Playground provides passive and active areas for a variety of age groups while also accommodating sea level rise for the lifespan of the playground. To decrease surface flooding and lessen the burden on the neighborhood stormwater system, high-value features like play equipment are placed at elevations above the projected floodplain and stormwater detention spaces are located in the void between the existing and newly raised elevations.

Designed in part to serve the adjacent P.S. 52, the project includes a large play area with ample seating that welcomes students and parents into the park after school. A central promenade allows for clear pedestrian and maintenance access across the site while linking various program elements. Tot-lot and game tables are separated into quieter spaces, while a synthetic turf lawn provides opportunities for un-programmed and intergenerational play. Overall, this redesign strives to serve its neighborhood while respecting the environmental impacts of its coastal location.

## Design Team

**DPR In-house** Jordan Weber, Project Lead & Assistant Landscape Architect; Nancy Prince, Chief of Landscape Architecture; David McConnell, Director of Landscape Architecture; Gabriella Keller, Deputy Director of Landscape Architecture **Department of Parks & Recreation** Mitchell J. Silver, Commissioner; Thérèse Braddick, Deputy Commissioner for Capital Projects; Mark Focht, Deputy Commissioner & Chief Operating Officer; Lynda Ricciardone, Staten Island Borough Commissioner; Vincent Cirrito, Assistant Commissioner for Landscape Architecture Program Management; Meredith Griffin, Chief of Landscape Program Management; Joseph Homsey, Chief of Staff for Staten Island; Adrian L. Smith, Team Leader; Ruby Wei, Director of Specifications & Estimating; Anne Cumella, Deputy Director of Specifications & Estimating; Heidi Maschino, Senior Civil Engineer; Prabesh Adhikari, Civil Engineer; Gus Henaidy, Lead Structural Engineer; Zulfiqar Syed, Assistant Structural Engineer; Arsheen Ehtesham, Environmental Project Manager; Agnieszka Sadowski, Surveyor; Jerome Thorpe, Capital Arborist; Trevor Lepucki, Senior Forester; Michael Kralovich, Capital Projects Analyst; Judy Tung, Senior Project Manager for Design; Sheena Brown, Public Design Commission Liaison





# Reconstruction of Ericsson Playground

Adjacent to M.S. 126, Manhattan Avenue and Leonard Street, Brooklyn

A project of the Department of Parks & Recreation

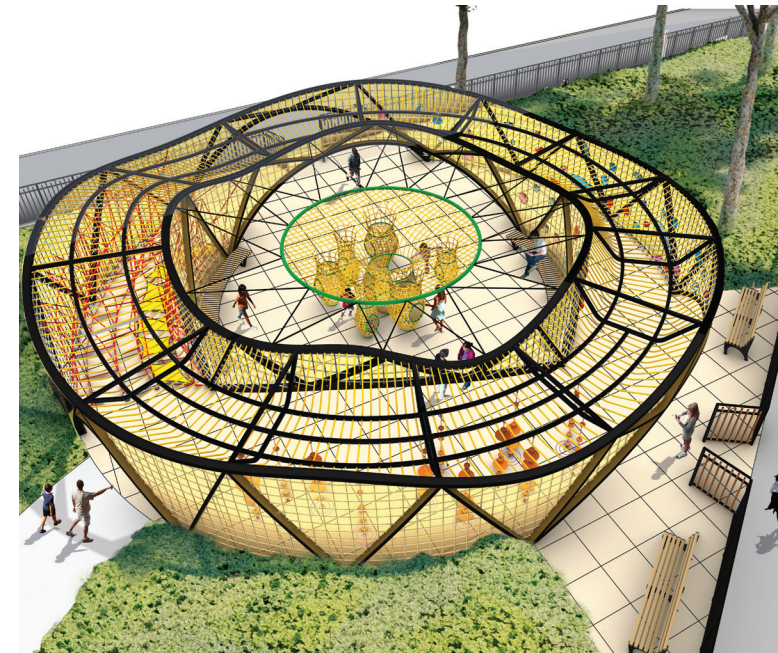
## James Corner Field Operations

Designed in part to serve the adjacent Magnet School for Environmental Engineering, this project will provide a framework to expand the school's eco-focused mission and programs. The primary design feature is a "green ribbon" that nearly triples the amount of planting at the site and connects an existing outdoor classroom and grove of trees through a meandering nature trail.

The trail defines three distinct activity areas including a flexible field and running track, two basketball courts with an outdoor fitness area, and a unique climbing feature called the "Tree House" that is universally accessible and promotes physical challenge and socialization. Additional amenities include garden spaces for children and seniors in the neighborhood.

## Design Team

**James Corner Field Operations** Lisa Switkin, Senior Principal; Matt Grunbaum, Senior Associate; Chi-Yin Lee, Associate; Victor Czulak, Associate **Abundant Playscapes** Antonio Malkusak, Founder & Landscape Architect **Department of Park & Recreation** Mitchell Silver, Commissioner; Thérèse Braddick, Deputy Commissioner for Capital Projects; Mark Focht, Deputy Commissioner & Chief Operating Officer; Martin Maher, Brooklyn Borough Commissioner; Vincent Cirrito, Assistant Commissioner for Landscape Architecture Program Management; Nancy Prince, Chief of Landscape Architecture; Meredith Griffin, Chief of Landscape Program Management; Christine Dabrow, Chief of Marketing & Development; Davey Ives, Chief of Staff, Brooklyn; David Martin, Team Leader; Terry Naranjo, Director of Landscape Architecture; Chris Syrett, Director of Landscape Architecture; Chris Yandoli, Director of Capital Projects; Mary Salig, North Brooklyn Parks Director; Michael Kralovich, Capital Projects Analyst; Judy Tung, Senior Project Manager for Design; Sheena Brown, Public Design Commission Liaison





# Modular Comfort Station Prototype for Parks Citywide

Citywide

A project of the Department of Parks & Recreation

## 1100 Architect

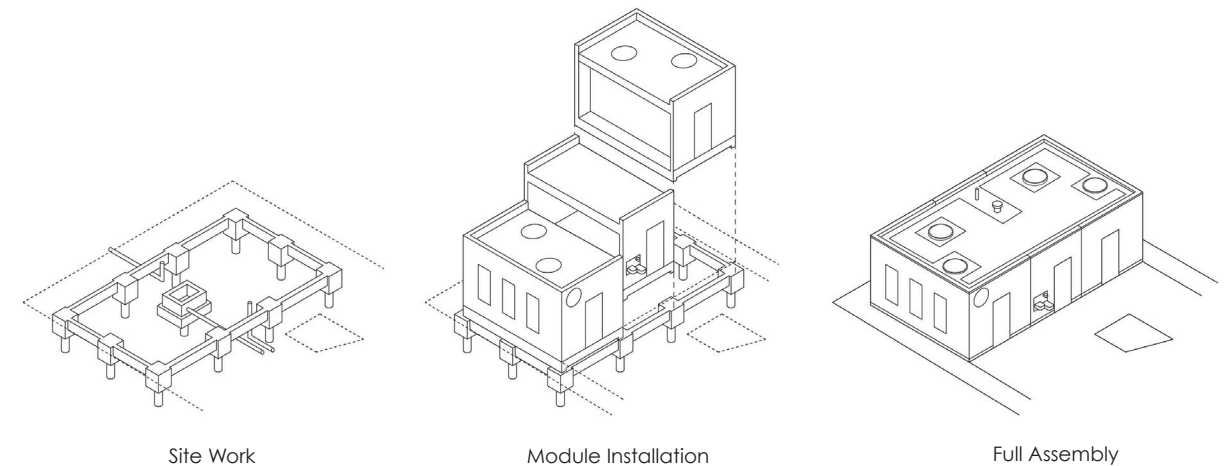
Utilizing the efficiencies of off-site construction and the lower costs associated with modular production techniques, this comfort station prototype provides an adaptable, affordable, and well-designed comfort station to serve New Yorkers citywide. Fabricated off-site and assembled on-site, the design expedites and optimizes construction delivery for the City.

The station is designed to be universally accessible, vandal resistant, and available year-round. Steel-frame structures are banked together and clad with a pattern of glazed blocks in a variety of color options, which can be specified per site. A green roof enhances the project's environmental performance and skylights maximize natural light within the restroom spaces. The pilot installation will be located in Luis Lopez Park in Staten Island.

Designed in a year that has highlighted the fundamental imperative and value of accessible public spaces and small-scale urban infrastructure, this prototype provides a pathway to efficiently update the City's public spaces by equipping them with thoughtfully designed and cost-effective comfort stations.

## Design Team

**1100 Architect** Juergen Riehm, Founding Principal; Jean-Cedric de Foy, Senior Associate; Jordan Tait, Designer; Kelly Li, Designer; Lydie Berthet-Bondet, Designer **Silman** Nat Oppenheimer, Senior Vice President; Thomas Reynolds, Associate; Hubert Chang, Project Engineer; Michael Machado, Senior Drafter; Romeo Hermogenes, Senior Drafter **JFK&M Consulting Group** Cindy Feinberg, Partner; Thomas Felicio, Mechanical Engineer; Thomas Carmiciano, Senior Electrical Engineer; Thomas Ribarich, Senior Plumbing & Fire Protection Engineer; Jack Jing, Plumbing/Fire Protection Engineer **Ellana** Ella Berezniysky, Principal Cost Manager; Henry Chin, Senior Cost Manager; Amir Assarpour, Senior Cost Manager; Yelena Kravchuk, Senior MEP Estimator; Volha Varaksa, Estimator **William Vitacco Associates** Joseph DeCeglie, Senior Vice President; Wymen Yu, Project Manager; Joseph Coffey-Slattery, Senior Project Coordinator **Matrix New World Engineering** Ahmed Osman, Senior Project Manager & Engineer; Vikki Hon PE, Geotechnical Project Manager; Stephen Moncrief, Survey Director; Brian Crespi, Environmental Project Manager **Department of Parks & Recreation** Mitchell J. Silver, Commissioner; Thérèse Braddick, Deputy Commissioner for Capital Projects; Mark Focht, Deputy Commissioner & Chief Operating Officer; Vesna Hadzibabic, Assistant Commissioner for Architecture & Engineering; Vincent Cirrito, Assistant Commissioner for Landscape Architecture Program Management; Nancy Prince, Chief of Landscape Architecture; Meredith Griffin, Chief of Landscape Program Management; Susan Bresler, Deputy Chief Architecture & Engineering; Adrian Smith, Team Leader; Jorge Prado, Director of Architecture; Terence McCormick, Director of Engineering; David McConnell, Director of Landscape Architecture; Paul Schubert, Deputy Director of Architecture; Raymond Palmares, Deputy Director of Engineering; Steven Moltz, Deputy Director of Engineering; Chad McNeil, Project Manager; Kimberly Butta, Landscape Architect; Gabriella Keller, Landscape Architect; Michael Kralovich, Capital Projects Analyst; Judy Tung, Senior Project Manager for Design; Sheena Brown, Public Design Commission Liaison





# Brownsville Library Renovation and Expansion

61 Glenmore Avenue, Brooklyn

A project of the Department of Design and Construction and Brooklyn Public Library

**LTL Architects**  
**Architectural Preservation Studio**  
**Local Office Landscape + Urban Design**

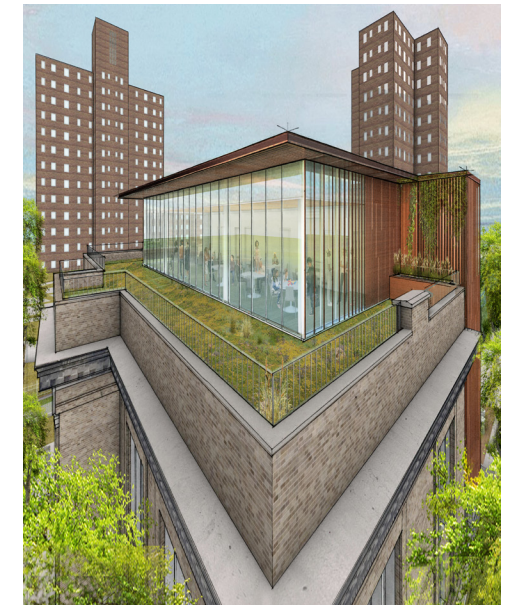
This complete renovation and expansion of the Brownsville Library will restore the historic beauty of this 1908 Carnegie library designed by Lord & Hewlett while enhancing the facility's ability to provide 21st-century services to the local community in the heart of the Howard Houses of Brownsville. Enlarged and light-filled spaces will inspire hope and enhance learning while providing a gathering place for a community that has been disproportionately impacted by the COVID-19 pandemic.

At the exterior, the terracotta clad addition reflects the historic use of materials in the original Carnegie building, and the landscape design provides an inviting and safe space for socialization, complete with a front sitting area and a children's outdoor reading terrace at the north courtyard.

Renovated interior spaces emphasize flexibility and adaptability to meet current needs while allowing for future programs and uses. The restoration of the historic reading room is complemented by a teen-focused mezzanine space and lower-level media-centered zone. At the top floor, a community space highlights the important multi-faceted social and cultural role performed by branch libraries today.

## Design Team

**LTL Architects** David J. Lewis, Principal; Paul Lewis, Principal; Marc Tsurumaki, Principal; Anna Knoell, Associate; Shane Algieri, Project Manager; Yasamin Mayas, Designer; Barrington Calvert, Designer **Architectural Preservation Studio** Pamela Jerome, President; Douglas Emilio, Principal; Stephanie Gerard, Senior Project Architect; Erin Guerra, Project Architect **Local Office Landscape + Urban Design** Walter Rodriguez Meyer, Principal; Vincent DiFusco, Project Manager **Silman** Scott Hughes, Principal; Justin Den Herder, Associate; Russell Feathers, Senior Engineer **Lumen Architecture** Nelson Jenkins, Principal **ME Engineers** Ed Bosco, Managing Principal; Sarah Gartenberg, Associate Principal **Insight Civil** Michelle Ryckman, President **Karp Strategies** Rebecca Karp, CEO & Managing Principal; Ali Sutherland-Brown, Director **Christopher Myers Studio** Christopher Myers, Artist; Kamal Nassif, Artist **Department of Design and Construction** Jamie Torres-Springer, Commissioner; Thomas Foley, Deputy Commissioner; Michaela Metcalfe, Director of Project Excellence; Becky Yurek, Senior Design Liaison & Public Design Commission Liaison; Daphne Lasky, Design Liaison; Sal Cali, Associate Commissioner; Sergio Vazquez, Program Director; Antonios Milatos, Deputy Program Director; Cheri Hawkins, Project Director; Eric Boorstyn, Associate Commissioner; Starling Keene, Director of Architecture; Jenny Gillette, Deputy Director of Architecture; Isaac Vanunu, Director of Engineering; Ashwani Bedi, Deputy Director of Engineering; Brett Miller, Deputy Director of Engineering; Yuri Birchwood-Fuentes, AE Team Leader; Raymond Zebrowski, Landscape Architecture Reviewer; Christopher Diamond, Director of Sustainability; Rebecca Schmidt, Deputy Director of Sustainability; Jessica Bristow, Sustainability Design Reviewer; Mathew Park, Chief of Commissioning; Rebecca Massey, Commissioning Project Director; Jason Wood, Director of ADA Compliance **Brooklyn Public Library** Linda E. Johnson, President & CEO; Nick Higgins, Chief Librarian; Karen Sheehan, Executive Vice President for Finance & Administration; David Woloch, Executive Vice President for External Affairs; Philip Heller, Vice President of Capital Planning & Facilities Management; Sonya Covington, Director of Capital Planning; Jasmine Sims, Capital Projects Coordinator & Public Design Commission Liaison; Michael Gunther, Project Manager for Capital Planning & Facilities; LaMeane Isaac, Regional Librarian in Neighborhood Services; Paul Levy, Supervising Librarian; Adwoa Adusei, Senior Librarian; Paulette Silvera, Library Circulation Supervisor; Tobi Thomas, Library Associate; Marcus Eason, Children's Senior Librarian; Addie Smock, Young Adult Senior Librarian; Darren Glenn, Outreach Senior Librarian; Revere Joyce, Early Literacy Outreach Associate; Monique Johnson, Technology Resource Specialist





# Paradise Parados by Teresita Fernández

Robert W. Wilson Sculpture Terrace at BAM Strong  
651 Fulton Street, Brooklyn

A project of the Department of Cultural Affairs  
and the Brooklyn Academy of Music

**Teresita Fernández**  
**Camber Studio**

A play on the words paradise, which originally means “walled or enclosed garden,” and parados, a term used in Ancient Greek theater meaning “side entrance,” this site-specific installation suggests a three-sided enclosed garden and is positioned, literally, on the side of the theater.

Framing the doorway to an interior lounge area, the artwork becomes a canopy that suggests a draped, proscenium-like entrance, mimicking the undulating curtains that would frame a stage.

The organic form was inspired by the meandering ivy-covered brick walls that are omnipresent in Brooklyn’s urban landscape and made of mirror-polished stainless steel to reflect the changing light of the day, passersby, street activity, and the tree canopies of the dynamic urban surroundings.

## Design Team

**Teresita Fernández**, Artist **Camber Studio** Wes Rozen, Designer **Department of Cultural Affairs** Gonzalo Casals, Commissioner; Andrew Burmeister, Assistant Commissioner of Capital Projects; Angela Blocker, Director of Capital Projects; David Bryant, Capital Projects Manager & Public Design Commission Liaison **Brooklyn Academy of Music** Jennifer Anglade, Co-Interim President; Coco Killingsworth, Co-Interim President; Elizabeth Moreau, Co-Interim President; Jonathan Jones, Director of Capital Projects; Alli Arnold, Manager of Visual Art





# Public Health Laboratory at the Harlem Hospital Center

40 West 137th Street, Manhattan

A project of the Economic Development Corporation and the Department of Health and Mental Hygiene

## Skidmore, Owings & Merrill

This 230,000 square foot state-of-the-art lab located adjacent to the Harlem Hospital will allow for testing and services for a wide range of clinical and environmental health-related concerns. From microbiology and virology, to immunology and biosafety, the new laboratory will further enhance the City's capability to respond to emerging public health challenges like COVID-19.

Organized in two parts, the building features a glassy, city-scaled laboratory volume rising from a pedestrian-scaled masonry podium that features essential support functions and the facility's community-facing program. The podium includes a green roof and the laboratory's administrative functions. Above, five floors of state-of-the-art laboratories are equipped to support a wide range of testing needs.

The façade design is characterized by a structural grid with diagonal glass and metal cladding. On the south side, the volume steps up to accommodate various laboratory sizes. This strategy also provides passive solar shading, which is one of the design components integrated to comply with the City's ambitious resiliency and sustainability goals.

## Design Team

**Skidmore, Owings & Merrill** Mustafa Abadan, Partner; Laura Ettelman, Partner; Nathan King, Associate Director; Scott Habjan, Associate Director; Rowan Georges, Associate Director; Julia Grabazs, Associate; Yohan Kim, Associate; Shubhra Singhal, Associate **DBB Architecture** Dayo Babalola, Principal; Kishel John, Designer **WSP** Leslie Gartner, Senior Vice President; Joe DePozzo, Senior Vice President; Mark Powasnik, Senior Vice President; Daniel Smith, Vice President; Handan Nazli, Director of Architecture **LERA Consulting Structural Engineers** Crystal Lin, Senior Design Engineer; Yun Luo, Associate **Airspace** Jill Ayers, Founder & Creative Director; Rachel Einsidler, Senior Designer **Heintges Consulting Architects** Jessica Young, Associate Principal; Samantha Leung, Associate **e4** Pamela Lippe, Principal; Mercedes Oviedo, Associate; Alia'a Harun, Senior Sustainability Analyst **Jensen Hughes** Ed LaPine, Team Leader; Rich Kelly, Senior Consultant **Entek** Steve Maddi, Project Engineer **JFK&M Consulting Group** Oscar Vanegas, Engineer; Gene Pupchenko, Engineer; Mark Zolotarev, Engineer **Langan** Ryan Manderbach, Senior Associate; Vijay Patel, Senior Associate **Lerch Bates** Tim Russell, Manager of Architectural Design; Hector Ruiz, Project Manager **Quennell Roitshchild & Partners** Elizabeth Franz, Partner; Ryan Castro, Associate **SBLD Studio** Susan Brady, President; Attila Uysal, Principal; Bruce Taylor, Associate Principal; Wei-Chun Chan, Designer **Shen Milsom Wilkie** David Goetz, Senior Associate; Jarrod Whittington, Senior Associate; Nicholas Sciannameo, Senior Associate **Department of Health and Mental Hygiene** Dr. Dave A. Chokshi, Commissioner; Julie Friesen, Deputy Commissioner; Darrin Taylor, Acting Deputy Commissioner; Sheila Benjamin, Assistant Commissioner; Jennifer Rakeman-Cagno, Assistant Commissioner; Scott Hughes, Deputy Director of the Public Health Laboratory; Jose Adames, Director of Architecture & Engineering; Omer Cabuk, Agency Energy Manager; Pauline Ferrante, Office of External Affairs; Kseniya Inoyatov, Public Design Commission Liaison **Economic Development Corporation** Rachel Loeb, President & CEO; Elizabeth Arnaiz, Executive Vice President; Dan Colangione, Vice President; Gale Rothstein, Vice President; Zack Aders, Assistant Vice President; Nikita Sharma, Senior Project Manager; Hannah Huynh, Project Analyst





# Waterfowl Management Program Building

Kensico Reservoir, Valhalla

A project of the Department of Environmental Protection

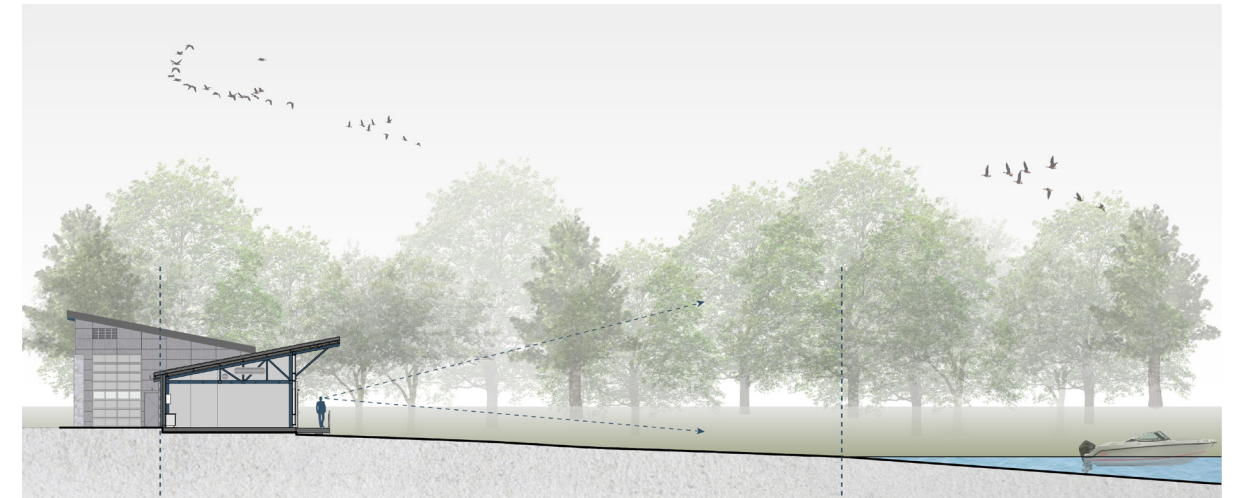
## Hazen and Sawyer Goshow Architects

Located on the shore of the Kensico Reservoir north of New York City, the Waterfowl Management Program Building will provide upgraded facilities for the management of the water bird population at the reservoir, which is critical to ensuring the health and safety of our water. This waterfowl management program is part of the City's robust watershed protection, which safeguards the celebrated quality of the more than one billion gallons of drinking water that the Department of Environmental Protection delivers to nine million New Yorkers daily.

The building comprises two volumes with intersecting rooflines that are intended to visually reference a bird's wings while functionally directing stormwater runoff away from the watershed. The primary volume houses administrative and support spaces designed to prioritize views of the water with expansive glazing that wraps the building to reveal a steel roof truss system within. The secondary volume encloses a boat wash and allows for pull-through access for boats through glazed overhead doors. The rear façades face the reservoir's historic campus and are clad in stone to provide an aesthetic continuity with the nearby early 20th-century buildings.

## Design Team

**Hazen and Sawyer** Edward Barboe, Vice President; Chris Roumbas, Senior Associate; Ryan Neumann, Project Engineer **Goshow Architects** Eric Goshow, Partner; Elizabeth Claassen, Studio Director; Shanette Kinard, Intern Architect; Miguel Varona, Intern Architect; Terry McMahon, Specifications Writer **Department of Environmental Protection** Vincent Sapienza, Commissioner; Paul Rush, Deputy Commissioner, Bureau of Water Supply; Michael DeLoach, Deputy Commissioner, Bureau of Public Affairs & Communications; Todd West, Director of Planning; Maria Mandarino, Chief, Infrastructure Planning, Design & Construction; Mark DelBalzo, Section Chief of On-call Planning, Design & Construction; Chris Nadareski, Section Chief Watershed Protection Programs, Wildlife Studies Section; Jose Nieves, Accountable Design Project Manager; Adam Bosch, Director of Public Affairs; Alicia West, Director of Public Design Outreach





# SPECIAL RECOGNITION

## Citywide Coastal Resiliency Initiatives

As the predictions for climate change continue to worsen, New York City and State agencies are advancing the largest and most ambitious portfolio of coastal resiliency projects anywhere in the United States with the goal to reimagine how waterfront areas can be designed to withstand the current and future effects of climate change, while meeting the needs of New Yorkers.

As part of the coastal resiliency portfolio, projects are being implemented across all five boroughs and incorporate a wide variety of design features to protect against coastal storms, prevent regular tidal flooding caused by rising sea levels, reduce beach erosion, and guard critical infrastructure. Project interventions include elevating shorelines, installing continuous protection systems such as levees, berms, and seawalls, enhancing natural dunes, and introducing fixed and deployable flood barriers.

To meet the unique needs and parameters of respective New York City neighborhoods, each project has been tailored to consider local topography, the preferences of the surrounding community, environmental concerns, and neighborhood character. The projects strive to strengthen connections to the shoreline, increase accessibility for all New Yorkers, and wherever possible, employ nature-based features, such as restored wetlands, resilient tree plantings, and the use of natural dunes to conceal seawalls made of steel and stone.

Together, spanning New York City's 520 miles of shoreline, the projects across the coastal resiliency portfolio will work to create stronger, more vibrant, and more resilient coastal neighborhoods within our densely populated urban environment.

**Mayor's Office of Climate Resiliency**

*in partnership with the*

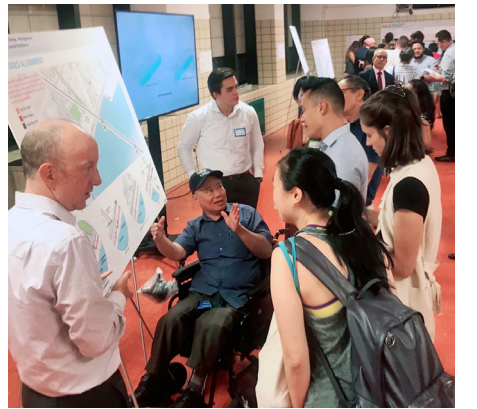
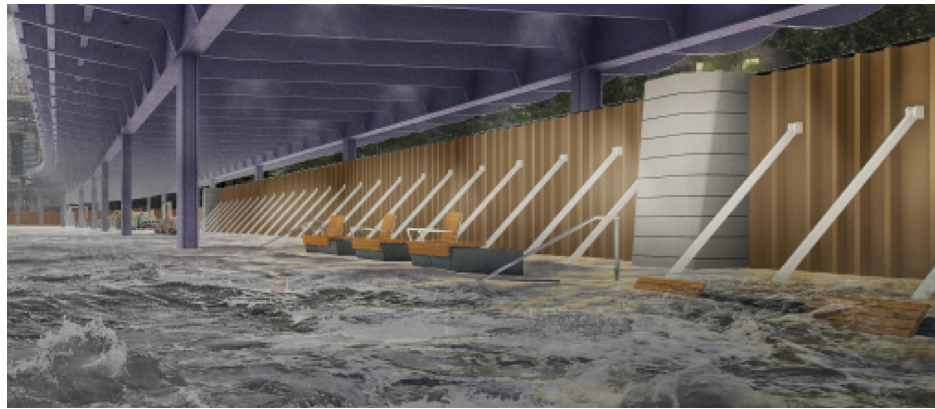
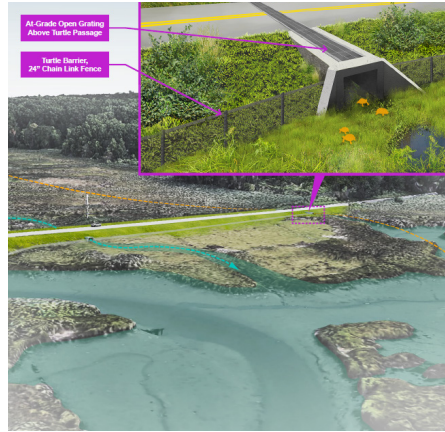
- Economic Development Corporation**
- Department of Design and Construction**
- Department of Environmental Protection**
- Department of Parks and Recreation**
- Department of Transportation**
- New York City Emergency Management**
- US Army Corps of Engineers**

*and including*

- East Side Coastal Resiliency**
- Interim Flood Protection Measures**
- Lower Manhattan Coastal Resiliency**
- Raise the Shoreline**
- Rockaways Atlantic Shorefront**
- Staten Island Coastal Storm Risk Management**









# SPECIAL RECOGNITION

## Parks Maintenance, Operations, and Art Conservation Staff

Over the past year, the pandemic brought a critical awareness of how essential our city parks and open spaces are for our physical and mental well-being. With so many seeking fresh air and a connection to the outdoors throughout this difficult time, parks served as critical infrastructure in our communities, and for a while, neighborhood parks were the only outlet many New Yorkers had for safe recreation, social gathering, and respite.

Thousands of maintenance and operations staff reported to work to clean over 600 comfort stations, remove trash and debris from parks, cut grass, maintain our tree canopies, and preserve the safety and operation of over 1,000 playgrounds, even during Tropical Storm Isaias.

Art and antiquities staff who perform critical care for a collection of more than 800 monument and art sites were, despite limited field time and diminished funding, able to complete annual maintenances and graffiti removals, which saw a 400% incident growth over the past year.

In the summer, staff worked to reopen the City's public beaches and pools in record time. Over 10.4-million people were able to safely visit NYC beaches and over 200,000 patrons enjoyed Parks' pools throughout the summer of 2020 because of this work.

The essential workers who care for these public spaces stepped up for the City when we needed them most. With immense gratitude, thank you to the Department of Parks and Recreation, Parks Alliances and partner organizations, and the more than 3,000 front-line workers who have kept our parks clean, safe, and attractive throughout the pandemic.

### Department of Parks & Recreation

*in partnership with*

#### Asphalt Green

#### Bronx River Alliance

#### Bryant Park Corporation / 34th Street Partnership

#### Central Park Conservancy

#### City Parks Foundation

#### Alliance for Flushing Meadows Corona Park

#### Forest Park Trust

#### Friends of The High Line

#### Greenbelt Conservancy

#### Historic House Trust

#### Hudson Yards Hell's Kitchen Alliance

#### Lincoln Center for the Performing Arts

#### Lower East Side Ecology Center

#### Madison Square Park Conservancy

#### New York Restoration Project

#### Prospect Park Alliance

#### Randall's Island Park Alliance

#### Riverside Park Conservancy

#### The Battery Conservancy

#### Times Square Alliance









## Numerous design teams are part of the citywide coastal resiliency initiative. They are supported by:

**Mayor's Office of Climate Resiliency** Jainey Bavishi, Director; Carrie Grassi, Deputy Director for Waterfront Resiliency; Jordan Salinger, Senior Policy Advisor for Waterfront Resiliency; Rebecca Fischman, Senior Policy Advisor for Waterfront Resiliency; Jessica Colon, Senior Policy Advisor for Waterfront Resiliency; Cherry Mui, Program Manager for Waterfront Resiliency; Katie Schmid, Deputy Director for Program Coordination and Delivery; Tomi Vest, General Counsel; Phil Ortiz, Deputy Director for External Affairs; Nate Kimball, Senior Policy Advisor for Infrastructure **Economic Development Corporation** Rachel Loeb, President & CEO; Seth Myers, Director of Project Implementation **Capital** Brian Larsen, Senior Vice President; Kathryn Prybylski, Vice President; Gale Rothstein, Vice President; Steven Nelson, Project Director; Alison Bognuda, Project Support Analyst **Planning & Land Use** Robert Holbrook, Senior Vice President; Nicole Campo, Vice President **Neighborhood Strategies** Katherine Ward, Assistant Vice President; Elijah Hutchinson, Vice President **Government Coordination** Wil Fisher, Assistant Vice President **Budget** Daniel Broom, Vice President; Modiha Bhatti, Supervising Analyst **Contracts** Irene Maropakis, Vice President **Legal** Michael Barone, Senior Legal Counsel **Department of Design and Construction** Jamie Torres-Springer, Commissioner; Eric Macfarlane, Deputy Commissioner; Jessica Mathew, Assistant Commissioner for Strategic Initiatives; How-Sheen Pau, Assistant Commissioner; Thu-Loan Dinh, Director; Bobby Issac, Director; Luis Caminero, Director; Mihir Shah, Director; Eric Ilijevich, Deputy Director; Kiumars Q. Amiri, Deputy Director; Dhanraj Damri, Deputy Director; Krupesh Patel, Deputy Director; Deborah Van Dermark, Design Liaison; Fay Lee, Borough Outreach Coordinator; Kevin Lee, Administrative Project Manager; Carlos Pichardo-Jimenez, Assistant Civil Engineer; Nicholas Adams, Assistant Civil Engineer; Husham Janjua, Assistant Civil Engineer; Ophelia Rivas, Assistant Director, Intergovernmental Affairs; Michaela Metcalfe, Director of Project Excellence; Becky Yurek, Senior Design Liaison & Public Design Commission Liaison **Department of Environmental Protection** Vincent Sapienza, Commissioner; James Mueller, Agency Chief Engineer; Michael Borsykowsky, Deputy Agency Chief Engineer; Kenneth Lam, Chief of Resiliency Coordination and Infiltration & Inflow Initiatives; Kamil Dyrda, Accountable Manager of Resiliency Coordination & Infiltration & Inflow Initiatives; Andrew Chao, Assistant Environmental Engineer; Keith Mahoney, Senior Director of Water Quality Planning; Gregory Mayes, Chief of Wastewater Integrated Planning; Kevin Hanley, Chief of Modeling and Analysis; Anastasios Georgelis, Deputy Commissioner; Thomas Wynne, Executive Director of Engineering; Jannine McColgan, Director of Engineering; Charles Olsen, Chief of Urban Stormwater Planning; Guo Zhan Wu, Chief of Regulatory Review; Shofiqule Azam, Section Chief of Plan Review Section; Hemraj Sham, Chief of Distribution Engineering; John Byrne, Distribution Engineer; Pamela Elardo, Deputy Commissioner; Angela DeLillo, Assistant Commissioner; Frank Loncar, Director of Collections & Resource Recovery Operations; Frank Kulcsar, Section Chief of Capital Planning & Budget; Anthony Maracic, Director of Asset Management & Capital Projects; Michael DeLoach, Deputy Commissioner; Humberto Galarza, Manhattan Coordinator; Alicia West, Director of Public Design Outreach **Department of Parks and Recreation** Mitchell J. Silver, Commissioner; Thérèse Braddick, Deputy Commissioner; Alyssa Cobb Konon, Deputy Commissioner; Mark Focht, Deputy Commissioner & Chief Operating Officer; William Castro, Manhattan Borough Commissioner; Michael Dockett, Queens Borough Commissioner; Lynda Ricciardone, Staten Island Borough Commissioner; Vincent Cirrito, Assistant Commissioner for Landscape Program Management; Vesna Hadzibabic, Assistant Commissioner for Architecture & Engineering; Sarah Neilson, Chief of Policy & Long-range Planning; Nancy Prince, Chief of Landscape Architecture; Steve Simon, Chief of Staff; Alda Chan, Director of Resiliency; Leslie Peoples, Director of Landscape Architecture; Jorge Prado, Director of Architecture; Doug Sessler, Director of Landscape Construction; Ruby Wei, Director of Specifications & Estimating; Stephen Hamson, Deputy Director of Landscape Architecture; Erik Linsalata, Deputy Director of Engineering; Melissa Haldeman, Senior Project Manager; Tom Adams, Former Senior Project Manager; Mark Vaccaro, Regional Manager; Lawrence Mauro, Landscape Architect; Luis Guallpa, Assistant Civil Engineer; Kevin Moulthrop, Specifications Writer; Chris Noel, Accessibility Coordinator; Joanne Amagrande, Chief of Staff; Joe Homsey, Chief of Staff; Tom Russo, Chief of Operations; Adrian Smith, Staten Island Team Leader; Eric Mattes, Queens Team Leader; Diane Dreier, Queens Design Director; James Mituzas, Queens Design Director; David McConnell, Staten Island Design Director; Ruby Wei, Director of Specifications; Eric Peterson, Rockaway Administrator; Bryan Cantwell, Deputy Design Director; Gabriella Keller, Deputy Design Director; Nicholas Magilton, Deputy Design Director; Justin Opalka, Deputy Design Director; Stacia Tull, Deputy Design Director; Raymond Palmares, Deputy Director of Engineering; Frank Carcaterra, Deputy Chief of Operations; Anne Cumella, Assistant Director of Specifications; Joseph Mauro, District Manager; Tony Arcamone, District Manager; Garrett Burger, Senior Project Planner; Mitchel Loring, Senior Project Planner; Judy Tung, Senior Project Manager; Abigail Chatfield, Former Project Manager; Joanne DeLorenzo, Former Project Manager; Marina Fedorova, Project Manager; Adrian Hayes, Project Manager; Kouichi Komuro, Project Manager; Adrienne Weremchuk, Project Manager; Shastine Van Vugt, Project Manager; Heidi Maschino, Civil Engineer; Fern Siew, Specifications Writer; Sandy Serra, Specifications Writer; Sheena Brown, Public Design Commission Liaison **Department of Transportation** Henry Gutman, Commissioner; Polly Trottenberg, Former Commissioner; Margaret Forgione, First Deputy Commissioner; Joseph Jarrin, Executive Deputy Commissioner; Elizabeth Franklin, Associate Commissioner; Leslie Wolf, Executive Director of Capital Planning; Louise Yeung, Director of Resiliency; Neg Lakew, Senior Project Manager; Adam Berkowitz, Resiliency Planner; Alan Olmsted, City Planner; Brad Zambrello, Queens Capital Borough Planner; Edward Pincar, Jr. Manhattan Borough Commissioner; Jennifer Sta. Ines, Deputy Manhattan Borough Commissioner; Kimberly Rancourt, Director of Special Projects; Colleen Chattergoon, Senior Borough Planner; Jennifer Leung, Senior Borough Planner; John Matterna, Senior Project Planner; Tom Cocola, Former Staten Island Borough Commissioner; Alia Kasem, Borough Planner; Nicole Garcia, Queens Borough Commissioner; Al Silvestri, Deputy Queens Borough Commissioner; Andrew Arcese, Borough Planner; Robert Collyer, Chief Bridge Officer; Paul Schwartz, Associate Deputy Commissioner; Sharita Hunter, Assistant Commissioner Emergency Response; Michelle Craven, Assistant Commissioner; Neil Gagliardi, Director of Urban Design; Nick Pettinati, Deputy Director of Urban Design & Public Design Commission Liaison; Christina Yoo, Project Manager **Emergency Management** Benjamin Krakauer, Executive Advisor to the Commissioner; Megan Pribram, Deputy Commissioner for Risk Reduction & Recovery; Heather Roiter, Assistant Commissioner for Risk Reduction & Recovery; Justin Diehl, Director of Ground Support Logistics; Lauren Mahon, Director of Continuous Improvement; Melissa Umberger, Director of Recovery & Risk; Suzan Rosen, Program Manager for Deployables

## Over 3,000 front-line women and men of NYC Parks Maintenance, Operations, and Art Conservation staff cared for our parks and kept them clean, safe, and attractive throughout the pandemic. They are supported by:

### Department of Parks & Recreation

Mitchell J. Silver, Commissioner  
Liam Kavanagh, First Deputy Commissioner  
Mark A. Focht, Deputy Commissioner & Chief Operating Officer

### Borough Commissioners

William Castro, Manhattan; Michael Dockett, Queens; Martin Maher, Brooklyn; Lynda Ricciardone, Staten Island; Iris Rodriguez-Rosa, Bronx

### Chiefs of Operation

Paul D'Amore; Jackie Langsam; Thomas Russo; Lawrence Scoones; Jeffrey Sigadel

### Deputy Chiefs of Operation

Frank Carcaterra; Michael Grattan; Jamey Hewitt; Adriana Jacykewycz; Daniel Mercado; Ralph Musolino; Philip Sparacio; Michael Super; Bonnie Williams

### Regional Managers

Minerva Del Real; Terese Flores; Eric Goetz; Laurence Major; Michael McLean; Macceau Medozile; Tannise Palmer; Christina Pisano; Daniel Reynolds; Mark Vaccaro; Elizabeth Walsack

### Park Administrators, Directors, Deputy Administrators

Marianne Anderson; David Barker; Joseph Block; Steve Cain; Shawn Cargil; Sue Donoghue; Portia Dyrenforth; Stephanie Ehrlich; Maria Febus; Maggie Greenfield; John Herrold; Eloise Hirsh; Jennifer Hoppa; John Kilcullen; Benjamin Kramer; Jana La Sorte; Deborah Maher; Joseph Mauro; Janice Melnick; Will Morrison; Margot Perrone; Eric Peterson; Mary Salig; David Salerno; Matt Symons; Stephanie Thayer; Latisha Williams; Kristin Zagorski-Kelly

### Park Managers

Christopher Acosta; Tony Arcamone; Justin Argo; Helaine Basher; James Cruickshank; Gloria Daniels; Matthew Doiron; Sumiyah Dupass; Gabrielle Echevarria; Shirley Echevarria; Monifa Edmondson; Paul Evans; Libertad Fernandez; Nelson Fung; Matthew Genrich; Joseph Gobin; Danielle Goldfarb; Wesley Hamilton; Danny Hernandez; Michael Holoszyc; Clinton Johnson; Shena Kaufman; Andrea Keyes; Emilio Llopiz; Kelvin Lomax; Joseph Magneri; Geoff Martin; Rashaun Mitchell; Karl Nightstar; Claude Ormsby; Kathy Parham; Jamil Patterson; Jamil Phillips; Vincent Piccolo; Kenneth Pragl; Felix Rodriguez; Matthew Sheridan; Joseph Spano; Lauren Sylvester; Ralph Violet; David Williams; Richard Williams

The Public Design Commission recognizes that design is a truly collaborative process. The names on this spread and included throughout the publication are just the tip of the iceberg of the myriad of people - designers, project managers, fundraisers, City agency heads, and nonprofits - who worked and continue to work behind the scenes to enhance our city's public realm.

**Thank you for all your work and dedication to New York City.**

**Bill de Blasio**

Mayor

**Vicki Been**

Deputy Mayor for Housing  
and Economic Development

## Public Design Commission of the City of New York

**Signe Nielsen**, President  
Landscape Architect

**Philip E. Aarons**, Vice President  
Lay Member

**Kenseth Armstead**  
Painter

**Laurie Hawkinson**  
Architect

**Karen Kiehl\***  
Brooklyn Museum

**Deborah Marlon**  
Lay Member

**Manuel Miranda**  
Lay Member

**Susan Morgenthau**  
The New York Public Library

**Ethel Sheffer**  
Mayor's Representative

**Dr. Merryl H. Tisch**  
The Metropolitan Museum of Art

**Mary Valverde**  
Sculptor

**Keri Butler**, Executive Director

**Grace Han**, Director of Capital Projects

**Rebecca Macklis**, Senior Urban Design Manager

**Jenna Miller**, Urban Design & Policy Manager

**Julianna Monjeau**, Archivist & Senior Records Manager

**Carolina Llano**, Project Manager

**Mary Beth Betts**, Tour Manager

Gail Cornell, Gary Deane, Gail Green, Deirdre LaPorte,  
and Patricia Orfanos, Docents

\*Richard Moore served on the Commission as  
the Brooklyn Museum representative through April 2021.



39

**NYC**DESIGN

NYC Public Design Commission  
City Hall, Third Floor, New York, NY 10007  
[nyc.gov/designcommission](http://nyc.gov/designcommission)