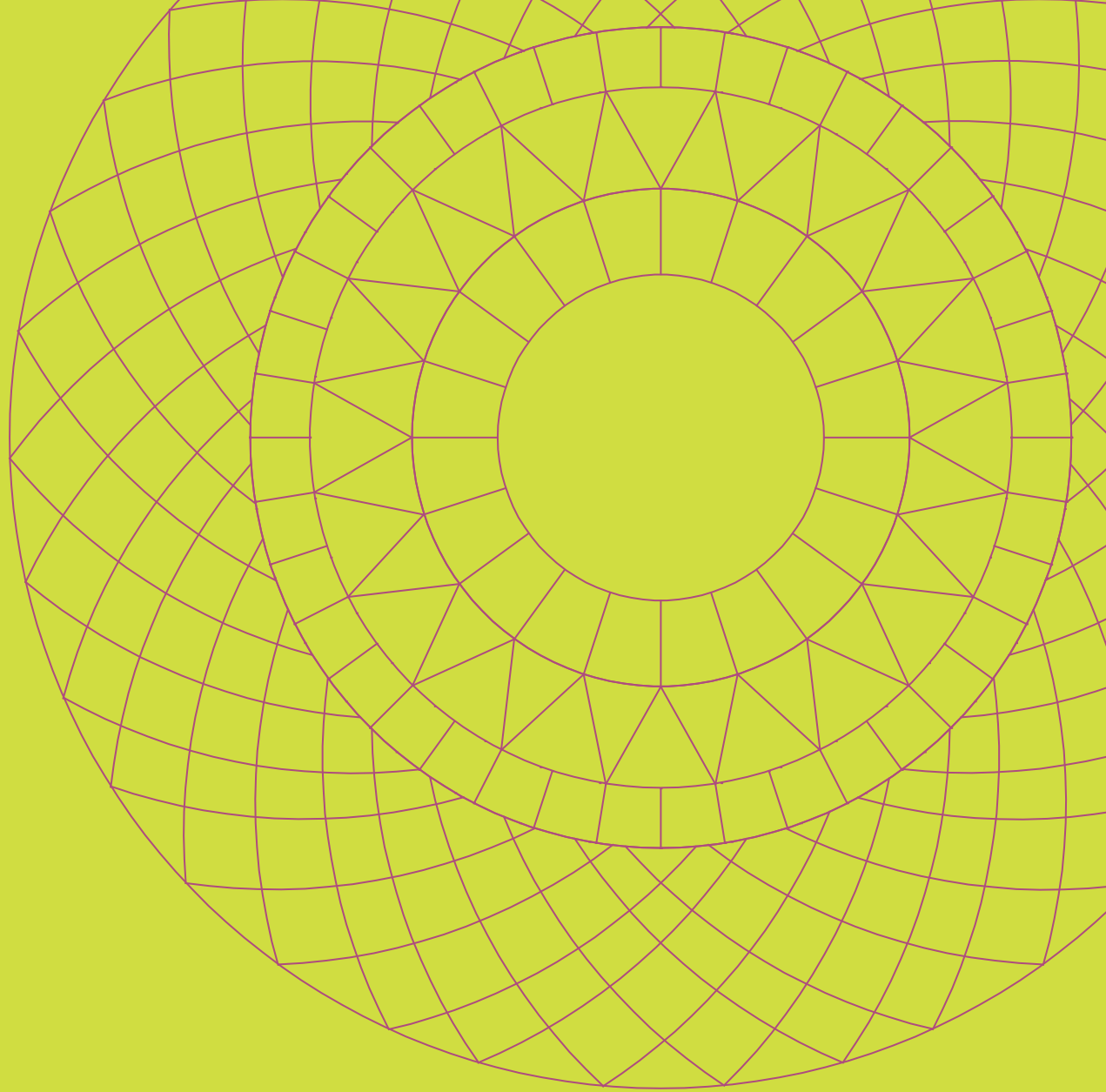


**36<sup>th</sup>** Annual Awards for  
Excellence  
in Design



May 23, 2018

Dear Friends:

It is a pleasure to welcome everyone to the New York City Public Design Commission's 36th Annual Awards for Excellence in Design.

New York has a rich architectural and artistic history, and New Yorkers are fortunate to have access to a variety of impressive public structures, spaces, and parks across the five boroughs. Guided by its mission to oversee public artworks, structures and open spaces, the Commission not only helps to preserve our built environment and New York's historic structures, it also plays an important role in preparing us for the future by supporting our efforts to become a more resilient city. Its annual awards ceremony recognizes the latest public works that are advancing these goals and enhancing our streetscapes and landscapes.

This year's winning projects include art installations that will capture people's imaginations, recreational and park facilities that will provide space for community events and outdoor activities, a library and museum that will enrich our cultural vitality, an education center that will fortify our thriving tech industry, and kiosks for small businesses that will enliven plazas across the city and serve our diverse residents and visitors. Tonight's event is a wonderful opportunity to applaud the creativity of leaders from our dynamic urban planning, arts, and design sectors who are allies in my administration's efforts to foster a more inclusive cultural life, enhance the vibrancy of our neighborhoods, and build a more sustainable, equitable, and livable city. I look forward to the many ways New Yorkers and visitors of all backgrounds will be engaged and uplifted by your innovative artworks and designs.

Sincerely,

A handwritten signature in black ink, appearing to read "Bill de Blasio". The signature is fluid and cursive, with a long horizontal stroke at the end.

Bill de Blasio  
Mayor

**Bill de Blasio**

Mayor

**Alicia Glen**

Deputy Mayor for Housing and Economic Development

**Public Design Commission of the City of New York****Signe Nielsen**, President

Landscape Architect

**Philip E. Aarons**, Vice President

Lay Member

**Laurie Hawkinson**

Architect

**Manuel Miranda**

Lay Member

**Richard Moore**

Brooklyn Museum

**Susan Morgenthau**

The New York Public Library

**Ethel Sheffer**

Mayor's Representative

**Dr. Merryl H. Tisch**

The Metropolitan Museum of Art

**Shin-pei Tsay**

Lay Member

**Mary Valverde**

Sculptor

**Hank Willis Thomas**

Painter

Justin Garrett Moore, Executive Director

Keri Butler, Deputy Director

Grace Han, Director of Capital Projects

Rachel Guinn, Senior Project Manager

Rebecca Macklis, Design & Special Projects Manager

Jenna Miller, Urban Design & Policy Manager

Julianna Monjeau, Archivist & Records Manager

Mary Beth Betts, Tour Manager

Gail Cornell, Gary Deane, Gail Green, Deirdre LaPorte,

and Patricia Orfanos, Docents

**Public Design Commission of the City of New York**

The Public Design Commission reviews permanent works of architecture, landscape architecture, and art proposed on or over City-owned property. As established by the New York City Charter in 1898, the Commission comprises 11 members, and includes an architect, landscape architect, painter, and sculptor as well as representatives of the Brooklyn Museum, Metropolitan Museum of Art, New York Public Library, and the Mayor. The Commission is an advocate for excellence and innovation in the public realm, ensuring the viability and quality of public programs and services throughout the city for years to come.

**Annual Awards for Excellence in Design**

Since 1983, the Design Commission has recognized outstanding public projects with its Awards for Excellence in Design. The winning projects, which are selected from the hundreds of submissions reviewed by the Commission the previous year, exemplify the City's highest design standards. This year's awards ceremony is taking place at New York City Hall.

**New York City Hall**

Designed by Joseph François Mangin and John McComb Jr. and completed in 1812, City Hall is one of the finest architectural achievements of its period. The Landmarks Preservation Commission designated City Hall an individual landmark in 1966 and its central rotunda an interior landmark in 1976. In 1993, the African Burial Ground and the Commons, which includes City Hall and the surrounding park, was designated a Historic District.

Special thanks to Bestype, Food Trends Catering and Events, the Mayor's Office of Special Projects and Community Events, the Mayor's Print Shop, Anusha Venkataraman, and Alicia West.

# DESIGN AWARDS

Wednesday May 23, 2018 | New York City Hall

# Garrison Playground

East 146th Street, Walton Avenue, and the Grand Concourse, Bronx

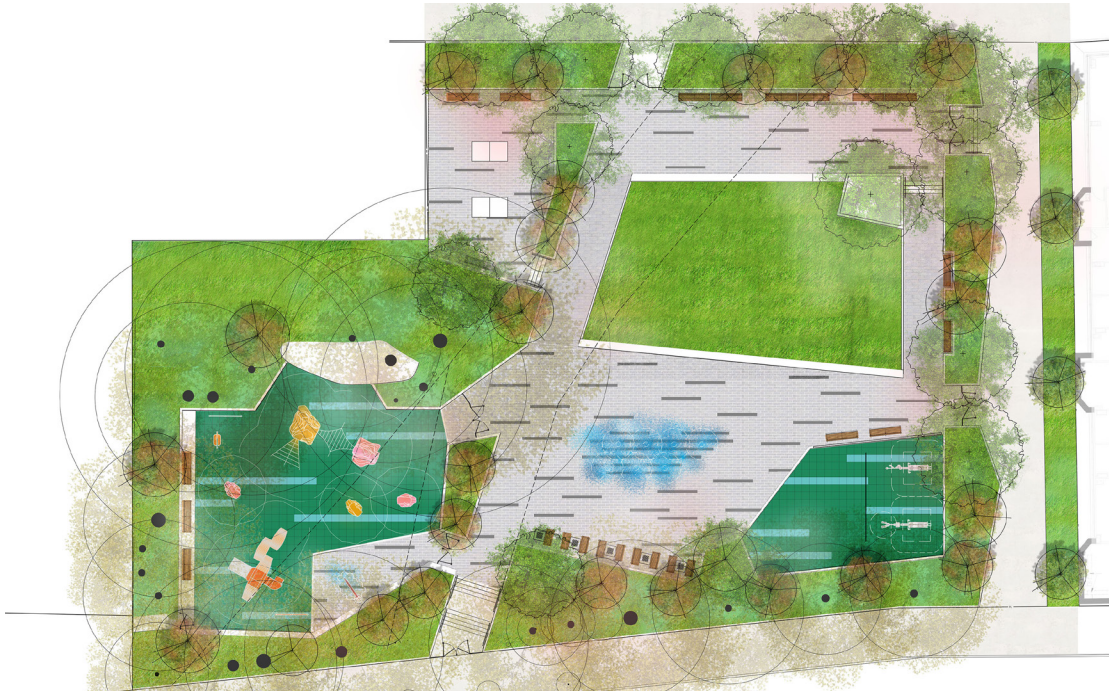
A project of the Department of Parks & Recreation

## Department of Parks & Recreation In-House Design

The reconstruction of Garrison Playground will benefit the previously underserved Bronx neighborhood of Mott Haven, creating a vibrant community space for a variety of users and age groups. As part of the Community Parks Initiative, the design was developed in collaboration with the adjacent Hostos Community College and a future affordable housing development that will include a school and community center. The site presents significant challenges, including a steep grade change from the sidewalk, retaining walls that reduce visibility and accessibility, and a below-grade subway tunnel that limits planting opportunities. High canopy trees, low understory planting, and low fences will open up view corridors, while a complete re-grading to lower or remove the retaining walls along the Grand Concourse and Walton Avenue will provide ADA-access. The park design is conceived as an expansive outdoor room with flexible social space. An elevated lawn shaded by canopy trees is the central focal point, surrounded by paved space to support events. A playground, table tennis, and an adult fitness area provide active recreation options within small footprints and encourage social interaction. With a permeable perimeter and a diverse range of amenities, the park is designed to become a nexus of community engagement and recreation.

## Design Team

**Department of Parks & Recreation In-House Design** Judy Tung, Landscape Architect; Renata Sokolowski, Bronx Design Director; David McConnell, Senior Landscape Architect; Kirsten Myhr, Assistant Landscape Architect; Penelope Segura, Junior Landscape Architect; **Dattner Architects** Kristen Nelson, Senior Associate; **Weintraub Diaz** Leonard Hopper, Landscape Architect; **Trinity Financial** Christoph Stump, Vice President of Design and Construction; **Hostos Community College** David Gomez, President; Joshua Rivera, Director of Government Relations; Elizabeth Friedman, Director of Campus Planning and Development; **Department of Housing Preservation & Development** Maria Torres-Springer, Commissioner; Leila Bozorg, Deputy Commissioner for Neighborhood Strategies; Eunice Suh, Assistant Commissioner for Planning & Predevelopment; Eric H. Wilson, Former Assistant Commissioner of Planning & Predevelopment; Ted Weinstein, Director of Bronx Planning; Winifred Campbell, Deputy Director of Bronx Planning; Summer Greenstein, Bronx Planner; **Department of Parks & Recreation** Mitchell J. Silver, Commissioner; Thérèse Braddick, Deputy Commissioner for Capital Projects; Iris Rodriguez-Rosa, Bronx Borough Parks Commissioner; Nick Molinari, Chief of Planning & Neighborhood Development; Nancy Prince, Chief of Landscape Architecture; Andrew Penzi, Team Leader for the Bronx; Doug Sessler, Director of Landscape Construction; Ruby Wei, Deputy Director of Specifications & Estimates; Zev Reuter, Bronx Director of Forestry; Raymond Palmares, Deputy Director of Engineering; Tristan Porto, Senior Project Manager for Design; Brenda Curtis, Capital Projects Arborist; Michael Ortiz, Bronx Borough Project Development Coordinator; Marisa Berry, Project Development Coordinator for Planning and Development; Julia Wagner, Project Planner, Planning and Development; Lindsay Quartini, Senior Project Manager; Heidi Maschino, Senior Engineer; Anne Cumella, Senior Specifications Writer; Chris Adkins, former Assistant Counsel; Susan Leung, Assistant Counsel; Sheena Brown, Public Design Commission Liaison; Michael Kralovich, Capital Projects Analyst



# The Studio Museum in Harlem

144 West 125th Street, Manhattan

A project of the Department of Cultural Affairs  
and The Studio Museum in Harlem

## Adjaye Associates Cooper Robertson

The Studio Museum's new building will more than double the gallery space for its permanent collection, temporary exhibitions, and *Artist-in-Residence* program. The design will further open up the museum to the public with a welcoming multipurpose space and rooftop terrace for Harlem residents and visitors from around the world to enjoy lectures, performances, and informal gatherings. The design takes its cues from the neighborhood's vernacular architecture. The rhythmic composition of the façade, with its glazing of varying proportions, references the masonry-framed windows of Harlem's apartment buildings. At the ground floor, welcoming glass doors, which can be opened in differing configurations, lead to descending steps that suggest an inversion of Harlem's ubiquitous brownstone stoops. Inside, the top-lit central core recalls the soaring volumes of neighborhood churches. The design draws Harlem into the museum with a porous and inviting street level frontage and a central grand stair that provides multiple lookout points from landings and suffuses the gallery spaces with natural light. The Studio Museum's new home will establish a distinguished architectural presence that celebrates the legacy of this critical cultural resource and will support and sustain the organization's programming into the future.

## Design Team

**Adjaye Associates** David Adjaye, Principal; Joe Franchina, Associate Director, US & American Projects; Russell Crader, Project Director; Christina Yang, Project Lead; Marc Massey, Project Manager; Joohui Son, Architectural Assistant; Seungho Park, Architectural Assistant; **Cooper Robertson** Scott Newman, Partner; Bruce Davis, Partner; Erin Flynn, Senior Associate; Christian Bollinger, Senior Associate; Jonathan Pietro, Associate; Alfia White, Architectural Designer; Octavio Ulloa, Architectural Designer; Matthew Mark, Architectural Designer; **Guy Nordenson Associates** Guy Nordenson, Principal; Lucile Walgenwitz, Associate; **Simpson Gumpertz & Heger** Kevin Poulin, Principal; Dimitri Papagiannakis, Senior Project Manager; Tzoni Tzonev, Senior Staff; **WSP** Paul Corrado, Senior Vice President; Nicholas Chiarelli, Senior Engineer; Meghan Fitzgerald, Mechanical Engineer; Alex Rezendes, Electrical Engineer; Jimmie Ng, Senior Associate; Frank Scala II, Senior Technology Engineer; **Langan Engineering & Environmental Services** Terrence Cheung, Project Engineer; Jared Green, Vice President and Senior Associate; Kelly Tufts, Senior Project Manager; Stephen Beavan, Senior Staff Engineer; **Thornton Tomasetti** Silverio Patrizi, Senior Project Engineer; **Longman Lindsey** Patricia Scanlon, Partner; Nate Perna, Associate Partner; **Fisher Marantz Stone** Hank Forrest, Senior Associate Principal; Carla Ross Allen, Associate; Michal LaRue, Lighting Designer; **Fisher Dachs Associates** Peter Rosenbaum, Associate Principal; Jeff McCrum, Consultant; **Harvey Marshall Berling Associates** David Harvey, Principal; John Radocy, Senior Consultant; **Vidaris** Andrew Graceffa, Senior Associate; Emma Stanley, Senior Associate; Adrian Tuluca, Senior Principal; **Two Twelve** David Gibson, Principal; Anna Sharp, Creative Director; Jenny Uchida, Senior Designer; Jenny Taing, Junior Designer; Alyssa Weinstein, Client Service Manager; **Department of Cultural Affairs** Tom Finkelpearl, Commissioner; Andrew Burmeister, Assistant Commissioner, Capital Projects; David Bryant, Capital Project Manager; **The Studio Museum in Harlem** Thelma Golden, Director and Chief Curator; Sheila McDaniel, Deputy Director, Finance and Operations; Evans Richardson, Chief of Staff; Betsy McClelland, Project Manager, Resources and Planning





# New York State Pavilion Observation Towers and Tent of Tomorrow

Flushing Meadows Corona Park, Queens

A project of the Department of Parks & Recreation

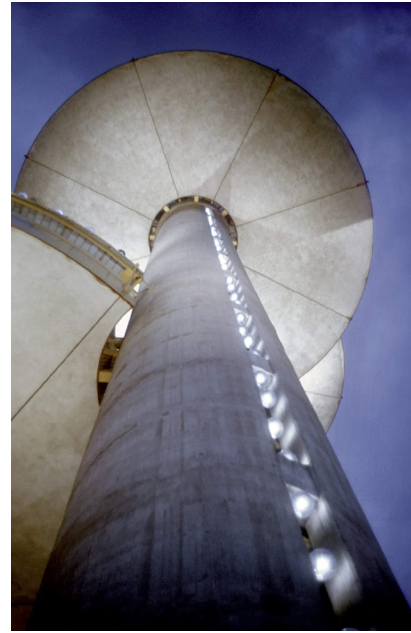
## **Silman Jan Hird Pokorny Associates L'Observatoire International**

The New York State Pavilion was designed for the 1964 World's Fair by esteemed architect Philip Johnson and engineer Lev Zetlin. The complex features the Tent of Tomorrow, a 12-story open-air ellipse capped by the world's largest suspended cable system roof, three observation towers topping off at 226 feet in height, and the Theaterama, which showcased a 360-degree panorama film. Today, the pavilion is deteriorated and closed, except for the Theaterama, which has been home to the Queens Theatre since 1993.

The rehabilitation of the pavilion includes stabilization of the towers and restoration of portions of the original architectural lighting design at both the towers and the Tent of Tomorrow. The illumination will increase the visibility of these iconic structures, which are listed on both the State Register of Historic Places and on the National Register of Historic Places. The tower stairs will be replaced, providing much-needed access for maintenance. In addition, the Tent's concrete columns will be repaired, suspension cables replaced, and the electrical system will be upgraded. This project lays the foundation for future preservation and potential adaptive reuse of these iconic structures.

## **Design Team**

**Silman** Nat Oppenheimer, Executive Vice President; Jeffrey Beane, Associate; Shinjinee Pathak, Senior Project Engineer; **Jan Hird Pokorny Associates** Michael Devonshire, Director of Conservation; Kurt Hirschberg, Architectural Designer; Nicole Ambrose, Architectural Designer; Angela Curmi, Architectural Designer; **L'Observatoire International** Hervé Descottes, Principal; Wei Jien, Senior Associate; Thomas Minch, Lighting Designer; Nicolas Dufils, Technical Director; **Jacob Feinberg Katz & Michaeli Consulting Group** Cindy Feinberg, Partner; Donald Chamberland, Senior Electrical Engineer; **Langan Engineering** Kelly Tufts PE, Senior Project Manager; Liza Billings, Project Engineer; Jennifer Imbro, Staff Engineer; **Vertical Access** Kent Diebolt, Founding Partner; Evan Kopelson, Partner; Kelly Streeter, Partner; Kevin Dalton, Rope Access Supervisor; Berta de Miguel, Metropolitan New York Branch Manager; Mike Russell, Rope Access Technician; **Department of Parks & Recreation** Mitchell J. Silver, Commissioner; Thérèse Braddick, Deputy Commissioner for Capital Projects; Dorothy Lewandowski, Queens Borough Parks Commissioner; Janice Melnick, Flushing Meadows Corona Park Administrator; Nancy Prince, Chief of Landscape Architecture; Kevin Quinn, former Chief of Architecture & Engineering; Kathleen O'Malley, Director of Architecture; Hassan Rashid, former Director of Engineering; Meira Berkower, Director of Planning & Project Management; Doug Sessler, Director of Landscape Construction; Paul Schubert, Deputy Director of Architecture; Sybil Young, Preservation Officer; Joseph DiSponzio, Preservation Landscape Architect; Sheena Brown, Public Design Commission Liaison



# Reflecting Pool

Flushing Meadows Corona Park, Queens

A project of the Department of Parks & Recreation

## Quennell Rothschild & Partners

The reconstruction of the Reflecting Pool is the first phase of a larger project to adaptively repurpose the Fountain of the Fairs, a row of three fountains that were constructed as part of the 1964 World's Fair. Retaining the fountain's original footprint, the basin of the Reflecting Pool will be raised to meet the existing perimeter granite coping and the pool will be transformed into an interactive fog garden. Five-hundred in-ground jets will create an ephemeral cloud that rises up to five feet in the air, providing cooling relief for visitors on hot days while using a relatively small amount of water – approximately the same volume as a small tot lot spray shower. The paving pattern reflects the tiered weirs of the original fountain and includes a decorative Art Deco design referencing the 1939 World's Fair, which also occupied this site. Lounge chairs and benches nestled into the surrounding landscape will offer varied seating options. Swaths of grasses and low shrubs will provide an understory for existing trees that affords a sense of enclosure without obstructing eye-level views. The design references the original use of the space as a water feature yet transforms the site into an enjoyable and sustainable focal point in the park.

## Design Team

**Quennell Rothschild & Partners** Mark Bunnell, Partner; Maria Riley, Project Manager; Alan Waxman, Illustrator; Wei Guo, Illustrator; **Delta Fountains** Joe Petry, Principal; James Turner, Vice President and Head of Design; Chris Blanton, Designer; **McLaren Engineering** Steven Grogg, Senior Vice President & Site Civil Division Chief; Brendan Kelly, Project Manager; Jeremy Billig, Vice President & New York City Regional Director; Constantine F. Panagkos, Project Engineer; **Wesler Cohen Associates Consulting Engineers** William Ackerman, Principal; Mark Keptsi, Principal; Juan Rivas, CAD Operator; **Department of Parks & Recreation** Mitchell J. Silver, Commissioner; Thérèse Braddick, Deputy Commissioner for Capital Projects; Dorothy Lewandowski, Queens Borough Parks Commissioner; Janice Melnick, Flushing Meadows Corona Park Administrator; Nancy Prince, Chief of Landscape Architecture; Kevin Quinn, former Chief of Architecture & Engineering; Vincent Cirrito, Team Leader for Queens; Diane Dreier, Queens Design Director; James Mituzas, Queens Design Director; Meira Berkower, Director of Planning & Project Management; Hassan Rashid, Former Director of Engineering; Doug Sessler, Director of Landscape Construction; Ruby Wei, Deputy Director of Specifications & Estimates; Justin Opalka, Senior Landscape Architect; Mayank Kumar, former Consultant Project Manager; Sheena Brown, Public Design Commission Liaison



# Convergence by Shawn Smith

Westchester Square Branch Library, 9 Westchester Square, Bronx

A project of the Department of Cultural Affairs' Percent for Art Program, the Department of Design and Construction, and the New York Public Library

## Shawn Smith Snøhetta

The Bronx is home to an exceptionally diverse bird population, with over 200 species found in the surrounding areas of Pelham Bay Park and the Bronx Zoo. Artist Shawn Smith worked with the New York Audubon Society to research these species and develop his installation for the new Westchester Square Branch Library. Suspended from the second floor ceiling, each of the 100 sculptures is constructed from approximately 2,500 individually painted pieces of basswood, a process that results in “pixelated” birds – with forms abstracted, details blurred, and colors intensified. Inspired by the New York Public Library’s digital collection of 19th- and early 20th-century illustrations, the artist chose 20 different types of songbirds for a diverse mix of bright patterns, shapes, and colors in predominantly red, orange, and yellow hues to contrast against the greens and blues of the library’s ceiling. Placed throughout the space to suggest movement, the birds converge at the children’s “story time” area – a metaphor for the community coming together at the library to learn, gather information, and connect to one another. From outside, the birds will be seen through the fritted glass of the building, which was designed by the architects as an abstraction of a tree canopy.

## Design Team

**Shawn Smith**, Artist; **Snøhetta** Craig Dykers, Founding Partner; Takeshi Tornier, Senior Designer and Project Manager; Samantha Stein, Designer; **Silman** Ian Pendleton, Structural Engineer and Project Manager; **Department of Cultural Affairs** Tom Finkelppearl, Commissioner; Kendal Henry, Director of Percent for Art; Reina Shibata, Deputy Director of Percent for Art and Public Design Commission Liaison; Sergio Pardo Lopez, Conservation Consultant for Percent for Art; **Department of Design and Construction** Ana Barrio, Acting Commissioner; Thomas Foley, Deputy Commissioner of Public Buildings; Christine Flaherty, Associate Commissioner of Public Buildings; Eric Boorstyn, Associate Commissioner of Architecture & Engineering; Margaret Castillo, Chief Architect; Oscar Gonzalez, Assistant Commissioner for Civic Structures; Gus Kritharis, Executive Director for Libraries Unit; Michael Giltenane, Program Director for New York Public Libraries Unit; Anthony Mayer, Deputy Director for New York Public Libraries Unit; Steven Whalen, Project Manager; Rocket Osborne, Junior Project Manager; Ron Tagliagambe, Director of Architecture; Starling Keene, Deputy Director of Architecture and Architecture & Engineering Team Leader; Isaac Vanunu, Director of Engineering; Ashwani Bedi, Deputy Director of Engineering; Rick Bell, Executive Director of Design and Construction Excellence; Michaela Metcalfe, Director of Design and Construction Excellence; Carol Clark, Director of Interagency Collaboration; Xenia Diente, Deputy Director of Public Art; Dora Blount, Public Art Manager; Becky Yurek, Design Liaison; **New York Public Library** Anthony Marx, President; Iris Weinshall, Chief Operating Officer, Chief Financial Officer & Treasurer; Risa Honig, Vice President, Capital Planning and Construction; Robert Kozlik, Director of Projects, Capital Planning and Construction; Steven Torrenti, Senior Project Manager, Capital Planning and Construction; Christopher Platt, Chief Branch Library Officer; Gesille Dixon, Borough Director, Bronx Libraries; Jean Pamphile, Associate Director, East Bronx; Luz Marin, Branch Manager, Westchester Square Library



American Goldfinch



Blackburnian Warbler



Blue-Winged Warbler



Dickcissel



House Finch



Magnolia Warbler



American Redstart



American Robin



Mourning Warbler



Northern Cardinal (Female)



Northern Cardinal (Male)



Palm Warbler



Purple Finch



Baltimore Oriole



Bay-Breasted Warbler



Rose-Breasted Grosbeak



Scarlet Tanager (Male)



Scarlet Tanager (Female)



Summer Tanager (Juvenile Male)



Yellow-Throated Vireo



# Brownsville Recreation Center

1555 Linden Boulevard, Brooklyn

A project of the Department of Parks & Recreation

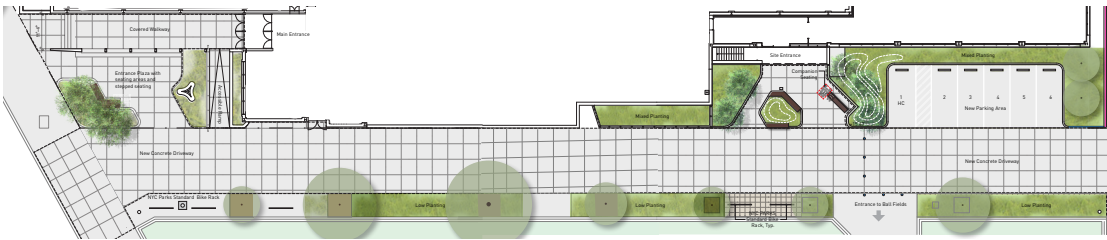
## 1100 Architect MNLA

The rehabilitation of the Brownsville Recreation Center will transform an outdated 1950s structure into a vital neighborhood resource with renovated fitness areas, a pool, a basketball gymnasium, and a range of different multi-purpose classrooms and spaces, including a separate area for after-school programs. The project takes its cues from the original building design, such as the distinctive signage on the portico at the main entrance, while also enhancing the building's public-facing presence. Improved circulation and increased transparency will create more inviting and secure spaces for the public and updates to HVAC systems, electrical, and plumbing will render the facility more energy efficient and comfortable. To enhance the pedestrian experience and improve the connection to the outdoor recreation space, the road between the recreation center and the adjacent park will be closed to vehicular traffic and replaced with two new entry plazas with planting and seating. The revitalized center will provide the community of Brownsville with enhanced programming and recreation for years to come.

## Design Team

**1100 Architect** Juergen Riehm, Founding Principal; Spencer Leaf, Senior Associate; Anca Vasiliu, Associate; Hormuz Batliboi, Architect; Zachary Goldstein, Architect; Kelsey Odom, Architect; William Ruffenach, Designer; Harris Mazur, Designer; Alejandra Sanchez Perez, Junior Designer; **MNLA** Xinpeng Yu, Landscape Architect; Rita Kwong, Landscape Designer; Silman Nat Oppenheimer, Executive Vice President and Senior Principal; Michael Machado, Senior Principal; Sara Steele, Principal; **Vanderweil Engineers** David Pinto, Managing Principal; Steven Karl, Associate; Ethan Case, Mechanical Engineer; Melissa Poggi, Electrical Engineer; Jorge Diaz, Fire Protection Engineer; Xuechao Xu, Fire Protection Design Engineer; Sesan Za'fra, Plumbing Engineer; Sebastian Velasquez, Plumbing Design Engineer; **Department of Parks & Recreation** Mitchell J. Silver, Commissioner; Thérèse Braddick, Deputy Commissioner for Capital Projects; Adena Long, Deputy Commissioner for Urban Park Service and Public Programs; Martin Maher, Brooklyn Borough Parks Commissioner; Eileen Dalton, Brooklyn Borough Chief of Recreation; Nancy Prince, Chief of Landscape Architecture; Kevin Quinn, former Chief of Architecture and Engineering; Kathleen O'Malley, Director of Architecture; Paul Schubert, Deputy Director of Architecture; Michael Browne, Administrative Project Manager; Katherine Riley, Consultant Project Manager; Sheena Brown, Public Design Commission Liaison





# *Aship, Aground, Anew* by Saul Becker

Snug Harbor Cultural Center Music Hall, 1000 Richmond Terrace,  
Staten Island

A project of the Department of Cultural Affairs' Percent for Art Program,  
the Department of Design and Construction, and the Snug Harbor  
Cultural Center

## **Saul Becker Studio Joseph**

Saul Becker's painting for Snug Harbor depicts an 18th-century sailing ship run aground and transformed by nature with mature trees growing out of its hull – a representation of the past and present merging into the future. Installed within the main stairwell of the new Music Hall addition, the painting will be printed on a series of aluminum panels to create one two-story image. From outside, the fritted gradient on the building's large windows provides the mural with an otherworldly appearance. Once a self-sustaining community for retired sailors, Snug Harbor has been a cultural center since 1975 and continues to redefine its cultural landscape. *Aship, Aground, Anew* expresses this transformation of a community founded in a maritime tradition finding new ground and fostering growth.

## **Design Team**

**Saul Becker**, Artist; **Mutuus Studio** Kristen Becker, Partner; Jim Friesz, Partner; **Studio Joseph** Wendy Evans Joseph, Principal; Robin Taff, Project Architect; Connie Wu, Associate; **Anita Jorgensen Lighting Design** Anita Jorgensen, Principal; **Department of Cultural Affairs** Tom Finkelppearl, Commissioner; Edwin Torres, Deputy Commissioner; Andrew Burmeister, Assistant Commissioner; Victor Metoyer, Deputy Director; Kendal Henry, Director of Percent for Art; Reina Shibata, Deputy Director of Percent for Art and Public Design Commission Liaison; Sergio Pardo Lopez, Conservation Consultant for Percent for Art; **Department of Design and Construction** Ana Barrio, Acting Commissioner; Thomas Foley, Deputy Commissioner of Public Buildings; Christine Flaherty, Associate Commissioner of Public Buildings; Eric Boorstyn, Associate Commissioner of Architecture & Engineering; Margaret Castillo, Chief Architect; Oscar Gonzalez, Assistant Commissioner for Civic Structures; Michael Nastasi, Assistant Commissioner for Cultural Unit; Woon Lam, Program Director for Cultural Unit; Jeremy Lockard, Deputy Director for Cultural Unit; Amar Malla, Senior Project Manager; Ron Tagliagambe, Director of Architecture; Starling Keene, Deputy Director of Architecture; Isaac Vanunu, Director of Engineering; Ashwani Bedi, Deputy Director of Engineering; Adele Finer, Architecture & Engineering Team Leader; Rick Bell, Executive Director of Design and Construction Excellence; Michaela Metcalfe, Director of Design and Construction Excellence; Carol Clark, Director of Interagency Collaboration; Xenia Diente, Deputy Director of Public Art; Dora Blount, Public Art Manager; Becky Yurek, Design Liaison; **Snug Harbor Cultural Center** Aileen Chumard Fuchs, President & Chief Executive Officer; Larry Anderson, Director of Performing Arts and Public Programs



# Verizon Executive Education Center and Graduate Hotel

Cornell University/Cornell Tech Campus, Roosevelt Island, Manhattan

A project of the Economic Development Corporation

## **Snøhetta** **James Corner Field Operations**

Forming the northwest gateway to Cornell University's Roosevelt Island tech campus, the education center and hotel will become an active and dynamic campus hub. The buildings share a transparent podium that will house a mix of public and academic spaces, enlivening the exterior courtyard and the arterial Tech Walk through campus. The structures are united with a continuous soffit yet each has its own vertical expression. The hotel has a tall and slender profile with a façade comprising two-story folded metal panels of varied widths. The education center, more intimate in scale, has a façade of two-story aluminum fins accented with wood. The hotel will be open to the public and will feature 224 guest rooms, three conference rooms, a restaurant, and a rooftop bar. The education center will accommodate academic conferences and programs generated by Cornell Tech and Cornell University more broadly. Combined, the two buildings will welcome and engage a diverse range of visitors from New York City and abroad.

## **Design Team**

**Snøhetta** Craig Dykers, Founding Partner; Alan Gordon, Partner, Director of Architecture; Michael Cotton, Project Manager, Senior Architect; Mia Kang, Project Designer, Team Leader; Sam Brissette, Senior Designer; Jeff Cheung, Designer; Todd Ebeltoft, Designer; **James Corner Field Operations** James Corner, Founder and Director; Karen Tamir, Principal; Biyoung Heo, Associate; Boqian Xu, Designer; **BuroHappold** Craig Schwitter, Partner; Julie Janiski, Associate Principal; Rob Franco, Associate Principal; **Iros Elevator** Mike Sori, Principal; **Stonehill Taylor** Paul Taylor, Principal; Damion Cera, Project Manager; **Gace Consulting Engineers** Brad Kiefer, Principal; **Ambrosino, DePinto, & Schmieder** Michael Leone, Principal; **Vidaris** Jennifer Sze, Principal; **Economic Development Corporation** James Patchett, President & Chief Executive Officer; Charles Gans, former Executive Vice President; Jeff Nelson, Executive Vice President; Matthew Kwatinetz, Executive Vice President; Lauren Brady, Senior Counsel; Darryl Connelly, Senior Vice President; Patrick Conway, Vice President; Jose Figuereo, Vice President; Lauren Wolf, Vice President; Gale Rothstein, Vice President and Public Design Commission Liaison; Beata Kosierb, former Senior Project Manager; Angelica Zhang, Project Manager



# Concert Grove Pavilion

Concert Grove adjacent to East Lake Drive, Prospect Park, Brooklyn

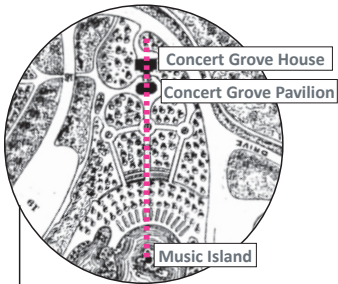
A project of the Department of Parks & Recreation and the Prospect Park Alliance

## Prospect Park Alliance In-House Design

Designed by Calvert Vaux in 1874, the Concert Grove Pavilion is an open-air shelter with eight cast iron columns supporting a decorative metal and wood roof with a stained-glass skylight. Typical of the day, the design borrows motifs from Hindu, Chinese, Moorish, and Egyptian architecture. Situated in the Upper Concert Grove, the pavilion originally served as a gathering place for the adjacent Concert Grove House restaurant, which was torn down at the direction of Robert Moses in 1949. The pavilion was almost completely destroyed by a fire in 1974, but the elaborate cast iron columns were salvaged and the pavilion was later restored in 1987. Unfortunately, an improperly installed detail at the roof flashing resulted in water damage. The current project will repair water damage, reconstruct missing elements, and repaint the structure based on historic images, bringing new life to this charming historic gathering space.

## Design Team

**Prospect Park Alliance In-House Design** Christian Zimmerman, Vice President of Capital & Landscape Management; Alden Maddry, Senior Architect; Sheena Enriquez, Assistant Architect; Fred Wallace, Assistant Architect; Justine Heilner, Senior Landscape Architect; Svetlana Ragulina, Assistant Landscape Architect; Jabari Taylor, Assistant Landscape Architect; **Department of Parks & Recreation** Mitchell J. Silver, Commissioner; Thérèse Braddick, Deputy Commissioner for Capital Projects; Martin Maher Brooklyn Borough Parks Commissioner; Nancy Prince, Chief of Design; David Martin, Team Leader for the Bronx; Eric Mattes, Bronx Design Director; Michael Leigh, Consultant Project Manager; Christopher Ameigh, former Consultant Project Manager; Sheena Brown, Public Design Commission Liaison; **Prospect Park Alliance** Susan Donoghue, President and Park Administrator; James Snow, Chief Operating Officer and Chief Financial Officer; Elizabeth Walsack, Regional Manager Central Brooklyn; Susan Sharer, Vice President of Development; Deborah Kirschner, Vice President of Marketing; Maria Cobo, Vice President of Education and Programming; Amy Peck, Park Historian and Archivist



**1874**  
Designed by Calvert Vaux. Typical of the day, its design borrowed motifs from Hindu, Chinese, Moorish, and Egyptian architecture.



**1950**  
The Concert Grove Pavilion hosted a concession stand beneath its canopy that served light refreshments.



**2018**  
The Pavilion is now closed to all access and left unused due to disrepair.



The Concert Grove Pavilion is an open shelter that consists of eight cast-iron columns supporting a decorative wood and steel roof with a beautiful stained glass skylight.



**1949**  
Was a gathering place for the adjacent restaurant called the Concert Grove House, which later suffered fire damage and was torn down in 1949.

**1974**  
The Pavilion was devastated by fire, leaving nothing but cast-iron columns.



**1988**  
Only the Concert Grove Pavilion was restored from the fire in the previous decade to once again be an "anchor" of the Concert Grove area and serve as a shelter and event space.

# Hamilton Fish Park Branch Library

415 East Houston Street, Manhattan

A project of the Department of Design and Construction and the New York Public Library

## **Rice+Lipka Architects** **Starr Whitehouse Landscape Architects & Planners**

Nestled under a three-story school complex, the Hamilton Fish Park Branch library is a single-story 1959 structure originally designed by Kelly & Gruzen Architects. The renovation of the library will restore and renew the modernist structure, creating an open and accessible community space. On Houston Street, the main entrance will be reopened and expanded with signage and a canopy that invite visitors into a day-lit reading room. The planting bed that spans the full length of the Houston Street façade will be reimaged to create a more welcoming space with raised planters, seating, and lighting to provide a community amenity while enlivening views from the interior. To meet the City's 80x50 goals to reduce greenhouse gas emissions, the project includes an energy-efficient mechanical system and building envelope upgrade, which will restore the building's original window openings with high-performance thermal glazing. The renovation will transform this well used civic structure into a light-filled, active facility that is visually connected to the community it serves.

## **Design Team**

**Rice+Lipka Architects** Lyn Rice, Principal; Astrid Lipka, Principal; Benjamin Cadena, Design Director; Joe Malboeuf, Senior Project Architect; Ahmad Khan, Designer; Yiyao Liu, Designer; **Starr Whitehouse Landscape Architects & Planners** Stephen Whitehouse, Principal; Jeffrey Poor, Principal; Gail Wittwer-Laird, Senior Associate; Heather Faivre, Landscape Designer; **Plus Group** Marina Solovchuk, Principal; Imtiaz Mulla, Principal; David Goldstein, Project Engineer; **Silman** Pat Arnett, Principal; Justin Den Herder, Associate; Ryan Miller, Senior Engineer; **Richard Shaver Architectural Lighting** Richard Shaver, Principal; **SMW Engineering Group** Steven Sorrenti, Senior Associate, Security; Matthew Tibbals, Senior Consultant, Information Technology; Brian Takacs, Senior Consultant, Audiovisual; **Department of Design and Construction** Ana Barrio, Acting Commissioner; Thomas Foley, Deputy Commissioner of Public Buildings; Christine Flaherty, Associate Commissioner of Public Buildings; Eric Boorstyn, Associate Commissioner of Architecture & Engineering; Margaret Castillo, Chief Architect; Oscar Gonzalez, Assistant Commissioner for Civic Structures; Gus Kritharis, Executive Director for Libraries Unit; Michael Giltenane, Program Director for New York Public Libraries Unit; Anthony Mayer, Deputy Director for New York Public Libraries Unit; Jacqueline Abel, Senior Project Manager; Steven Whalen, Project Manager; Ron Tagliagambe, Director of Architecture; Starling Keene, Deputy Director of Architecture; Isaac Vanunu, Director of Engineering; Ashwani Bedi, Deputy Director of Engineering; Maria Puternicki, Architecture & Engineering Team Leader; Christopher Diamond, Director of Sustainable Design; Michael Balagur, Deputy Director of Sustainable Design; Rebecca Schmidt, Sustainability Specialist; Rick Bell, Executive Director of Design and Construction Excellence; Michaela Metcalfe, Director of Design and Construction Excellence; Becky Yurek, Design Liaison; **New York Public Library** Anthony Marx, President; Iris Weinsall, Chief Operating Officer, Chief Financial Officer & Treasurer; Risa Honig, Vice President, Capital Planning and Construction; Ann Webster, Senior Project Manager, Capital Planning and Construction; Leslie Williams, Senior Project Manager, Capital Planning and Construction; Christopher Platt, Chief Branch Library Officer; Yolanda Gleason, Borough Director, Manhattan and Staten Island Libraries; Dawn Chance, Associate Director, Lower Manhattan; Norma Acevedo, Branch Manager, Hamilton Fish Park Library





# Prototypical Kiosks for Citywide Plazas

Citywide

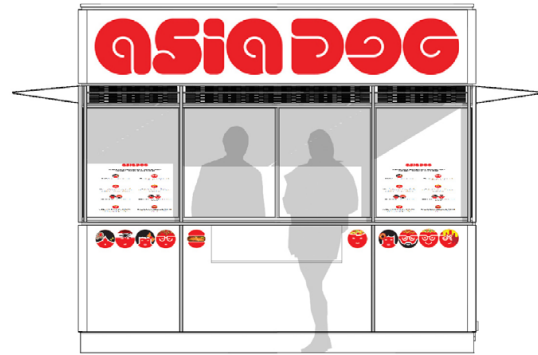
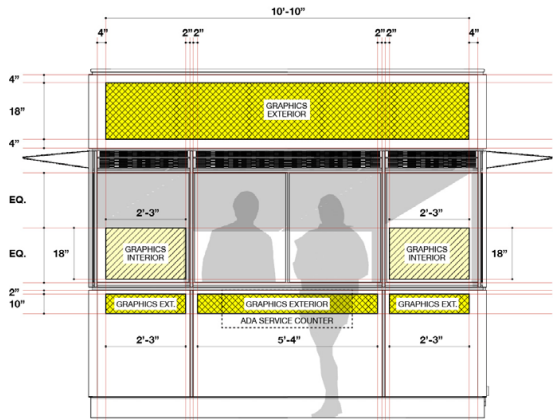
A project of the Department of Transportation

## Billings Jackson Design

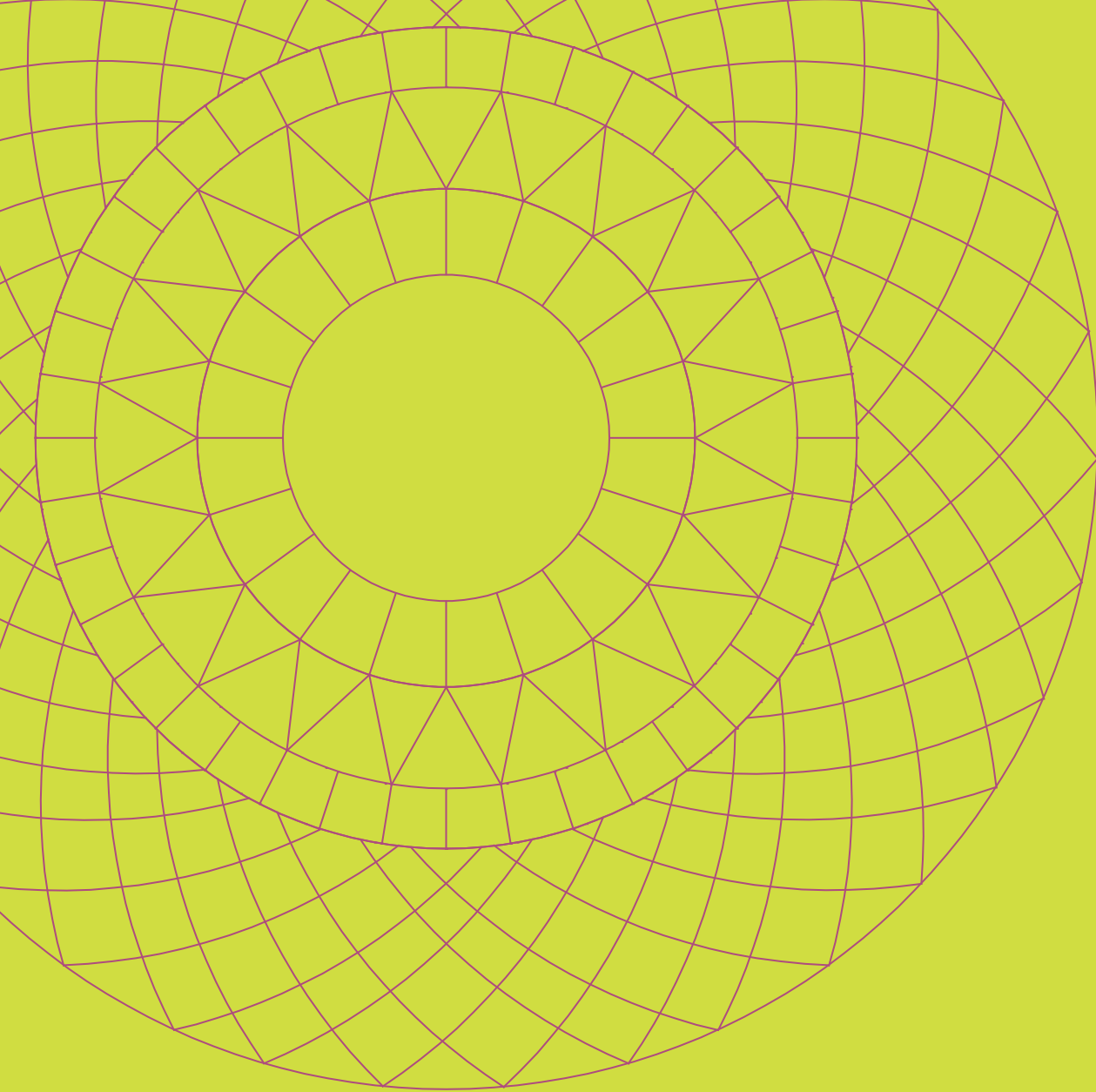
Since its inception in 2008, the NYC Plaza Program has transformed neighborhoods throughout the city by enhancing pedestrian safety, promoting walking, providing passive recreation space, fostering civic engagement, and boosting local economies. Concessions have greatly contributed to the lifeblood of the plazas – activating the public spaces, providing an amenity, and offering a source of revenue for the plazas' continued maintenance. The prototypical plaza kiosk design provides a cost-effective and versatile structure that is aesthetically harmonious with the city's street furnishings. The design is sleek, with a smooth, stainless steel finish and designated areas for signage and branding. The interior allows for maximum flexibility to accommodate equipment for a variety of potential operators. Sliding service windows feature folding perforated stainless steel panels that double as awnings when open and security shutters when closed. At night, when the kiosks have closed, light will shine through the perforated shutters, transforming the structures into beacons for a safe and vibrant public space.

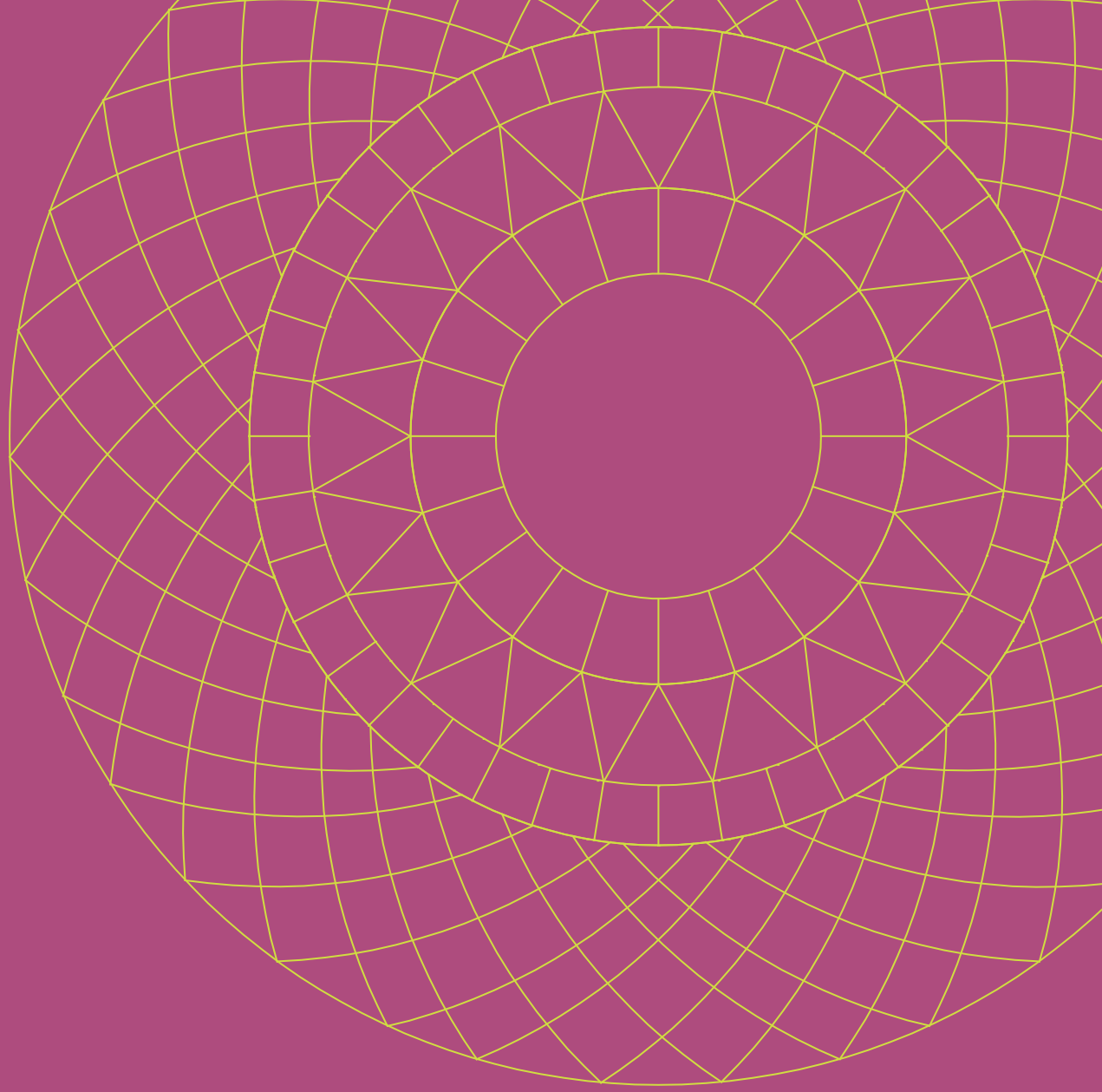
## Design Team

**Billings Jackson Design** Simon Kristak, Director; Jason Vigneri-Beane, Project Designer; **Arup** L.J. Nassivera, Associate; **Department of Transportation** Polly Trottenberg, Commissioner; Margaret Forgione, Chief Operating Officer; Joseph Jarrin, Executive Deputy Commissioner, Strategic and Agency Services; Wendy Feuer, Assistant Commissioner of Urban Design, Art and Wayfinding; Neil Gagliardi, Director of Urban Design; Nick Pettinati, Senior Project Manager, Urban Design, and Public Design Commission Liaison; Sean Quinn, Senior Director, Office of Bicycle and Pedestrian Programs; Emily Weidenhof, Director of Public Space; David Breen, Deputy Director of Public Space; Jessica Cronstein, Public Space Urban Designer; Lian Farhi, Public Space Urban Designer









**NYC** DESIGN