

Ninth Annual Report on Homeless Deaths
New York City Department of Health and Mental Hygiene
Bureau of Vital Statistics
Local Law 63 (2005)
July 1, 2013 – June 30, 2014

Background

This report has been prepared and submitted pursuant to Local Law 63 (LL63) which requires the City of New York to track and report deaths of homeless persons in the City. The original Local Law 63 of 2005 was extended on January 30, 2012. This report contains data provided by the NYC Office of Chief Medical Examiner (OCME), the NYC Department of Homeless Services (DHS), the NYC Department of Housing Preservation and Development (HPD), and the NYC Human Resources Administration (HRA) to the Department of Health and Mental Hygiene (DOHMH) throughout the annual period of July 1, 2013 – June 30, 2014. DHS, HPD, and HRA maintain records on the homeless individuals for whom they provide temporary housing in New York City. OCME is responsible for investigating NYC deaths that are suspicious, unusual, violent, or criminal in nature, investigates most homeless deaths. Data presented herein were compiled from the agencies and matched against NYC death certificates and analyzed by the DOHMH Office of Vital Statistics.

Summary

For the period July 1, 2013 through June 30, 2014, there were a total of 213 homeless deaths reported by OCME and DHS, an increase of 5 deaths in from the prior year. The largest number of deaths (n=65; 31%) for this reporting year (FY14) occurred during the fourth quarter (April 1- June 30, 2014).

Note that the NYC Human Resources Administration (HRA) simultaneously and separately reported 39 homeless deaths during this period. Due to confidentiality concerns, HRA data could not be assessed for potential duplication with deaths reported by the other agencies or matched to death certificates. As a result, findings from the 2 groups of deaths are reported separately.

Homeless deaths reported by DHS, HPD, and OCME

Of the 213 deaths reported by DHS, HPD, and OCME, the majority were male (78%; n=167) and more than half were aged 45 to 64 (60%; n=127). Non-sheltered decedents accounted for just over half (51%; n=108).

Location of death was grouped into hospital, shelter, outdoors and other places.

- Hospital deaths accounted for 51% (n=109) of deaths among the homeless overall while hospital deaths accounted for 57% (n=60) of these deaths among the sheltered and 45% (n=49) among non-sheltered.
- The proportion of deaths that occurred in shelters among those sheltered was 30% (n=31).
- Outdoor deaths accounted for 15% (n=32) among all decedents. Outdoor deaths accounted for 5% (n=5) among the sheltered and 25% (n=27) among non-sheltered.
- Deaths in other places (e.g. apartment of a friend, subway station, or public building) accounted for 19% (n=41) among all decedents. Deaths in other places accounted for 9% (n=9) of deaths

among the sheltered and 30% (n=32) among non-sheltered. Refer to Table 1 for definitions of outdoor and other place deaths.

The top five leading causes of death were drug overdose (20%; n=43), heart disease (19%; n=41), accidents (15%; n=33), alcohol abuse (8%; n=17), and suicide (3%; n=7). The majority of deaths were investigated by OCME (88%; n=187), comparable to past annual reports.

Homeless deaths reported by HRA

Of the 39 deaths reported by HRA, most were male (79%; n=31) and between the ages of 45 and 64 (54%, n=21). All 39 homeless decedents were sheltered within an HRA emergency residence. Most decedents died in hospitals (62%; n=24) or shelters (28%; n=11). Information on OCME investigations of HRA homeless deaths and community board district of death is not available. Cause of death information cannot be extracted from the death certificate or analyzed as HRA does not provide identifying information for cases, due to laws protecting data confidentiality.

Additional Methodological Information

Definitions

LL63 defines, a “homeless person” as “a person who at the time of death did not have a known street address of a residence at which he or she was known or reasonably believed to have resided.” A “homeless shelter” is “(i) a residence operated by or on behalf of the Department of Homeless Services; (ii) an emergency residence operated by or on behalf of the Department of Social Services/Human Resources Administration which is available primarily for homeless persons with HIV or AIDS related illness; or (iii) a residence operated by or on behalf of the Department of Housing Preservation and Development to the extent that such residence houses clients of the Department of Homeless Services; provided, however that such term shall not include any residence that is available primarily for battered women.” A “homeless shelter resident” or “sheltered” is “a person who at the time of death lived in a homeless shelter.”

Outdoor and other place location of death categories are given in Table 1.

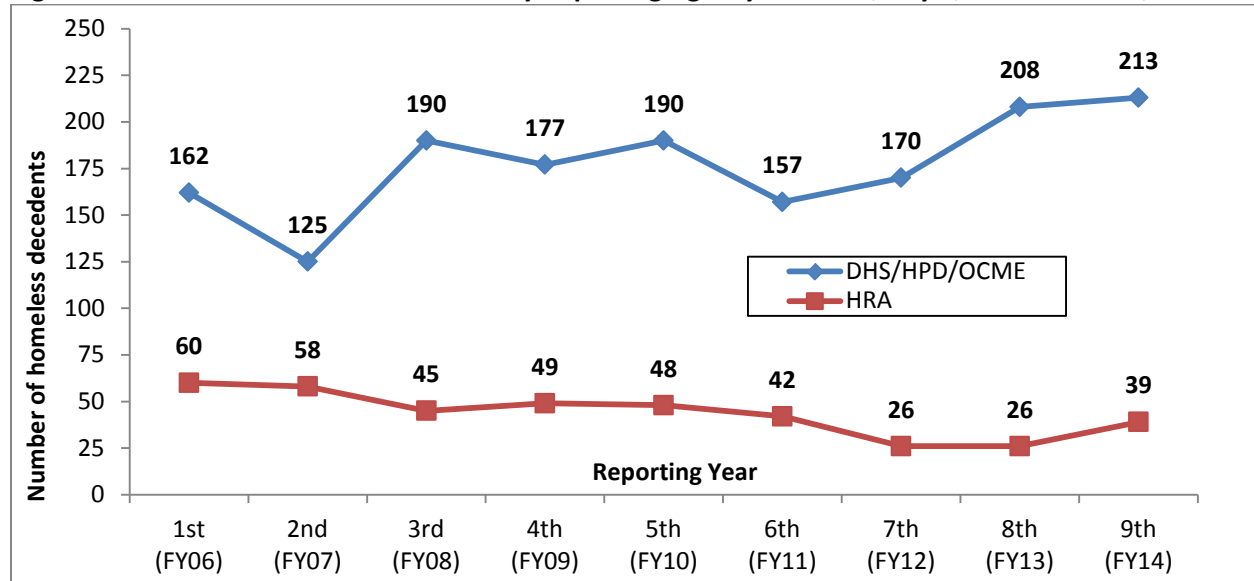
Methods

DHS, HPD, and OCME provided homeless death case reports to DOHMH using the definitions above. These reports were validated and duplicates (i.e. when DHS cases were, also, OCME cases) were removed. HRA did not disclose any identifiable information on HRA homeless residents, per Article 27-F of the New York State Public Health Law, which prohibits disclosure of information that could reasonably identify someone as having an HIV-related illness or AIDS. As a result, HRA homeless deaths could not be distinguished from DHS, HPD and OCME deaths, and total NYC homeless deaths could not be ascertained.

Case reports from DHS, HPD, OCME, and HRA were compiled. Because HRA cases remain anonymous, only DHS, HPD, and OCME case reports were matched against NYC DOHMH Vital Statistics death certificates. DOHMH followed up with agencies to obtain any missing data elements. Some cases may have been determined not to meet the LL63 homeless case definition. Such cases were removed from the annual report.

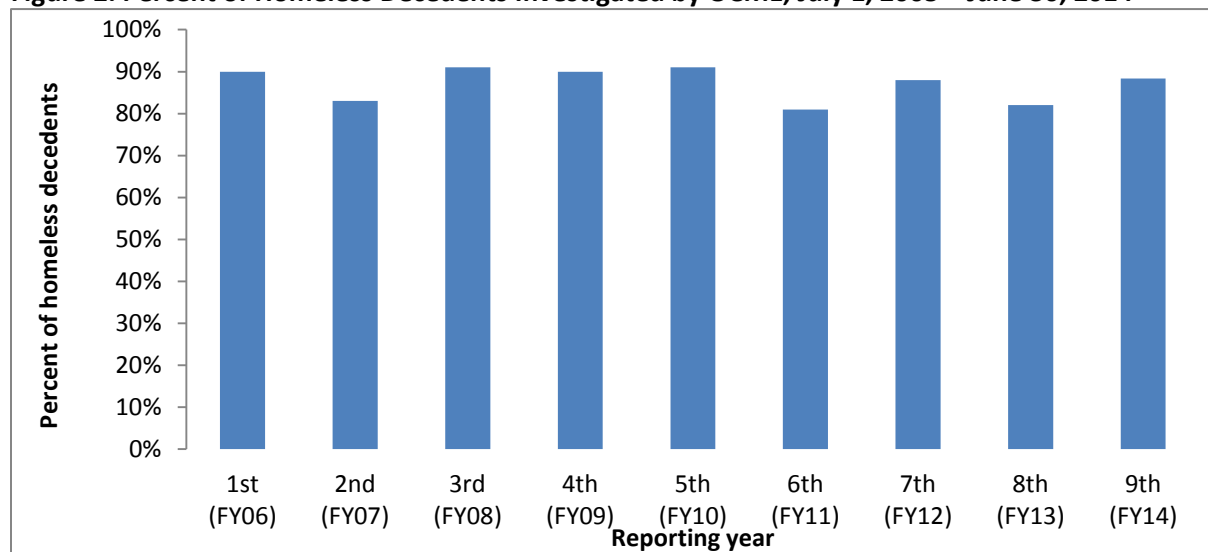
DEATHS OF HOMELESS PERSONS

Figure 1. Deaths of Homeless Decedents by Reporting Agency and Year, July 1, 2005 - June 30, 2014



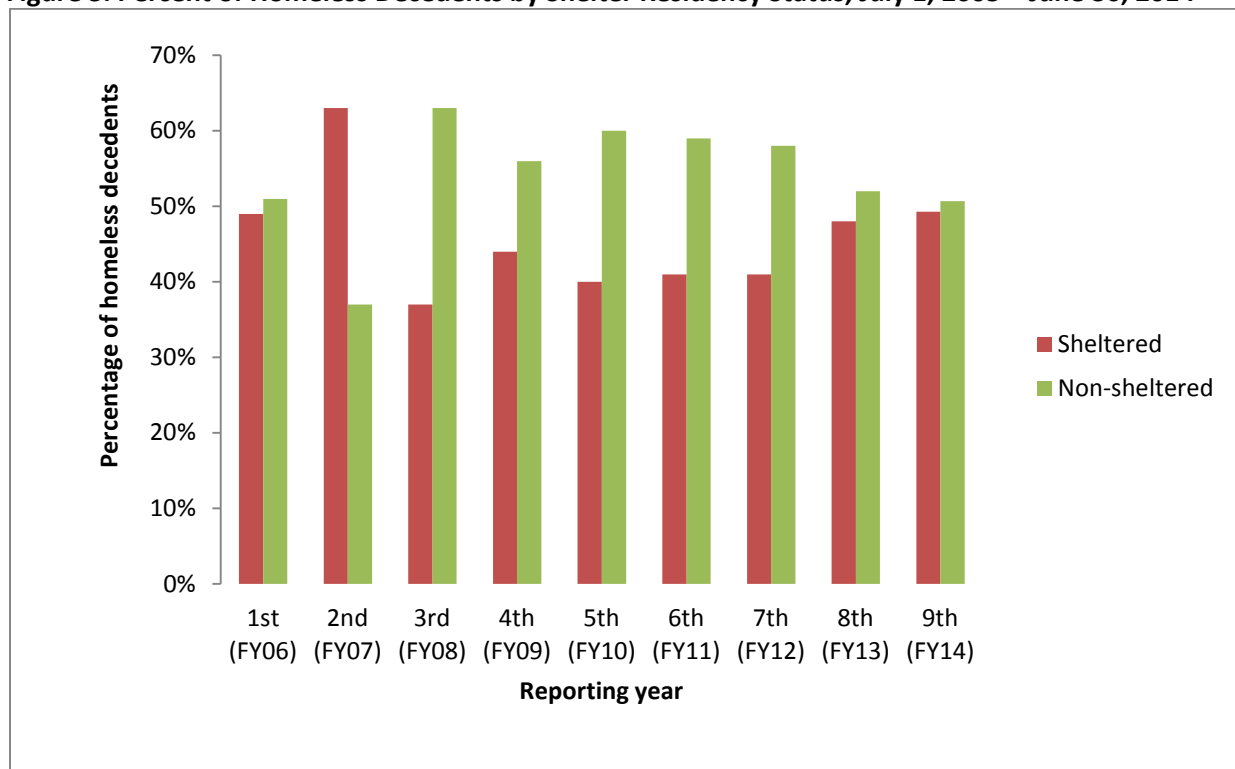
The number of homeless decedents reported annually by DHS, HPD, and OCME has ranged between 125 and 213 (Figure 1) since this report was initiated. The month with the highest number of deaths ($n=22$) was June 2014. The quarter with the highest number of deaths ($n=65$) was from April 1 to June 30, 2014 (Table 2).

Figure 2. Percent of Homeless Decedents Investigated by OCME, July 1, 2005 – June 30, 2014



OCME investigated the majority of homeless deaths (88%; $n=187$), consistent with previous years (81-91%) (Figure 2). Among the 105 sheltered decedents, 78% ($n=82$) were investigated by OCME, and among the 108 non-sheltered decedents, 96% ($n=105$) were investigated by OCME (Table 2).

Figure 3. Percent of Homeless Decedents by Shelter Residency Status, July 1, 2005 – June 30, 2014



Of the 213 deaths reported in FY14, 49% (105) of decedents were sheltered and 51% (108) were non-sheltered (Figure 3, Table 2).

LOCATION OF DEATH

The location of death (shelter, hospital, outdoors, or other place), stratified by borough, community district, and shelter residency status are shown in Table 4a for deaths reported by DHS, HPD, and OCME. Categories of outdoor and other place deaths are provided in Table 1. HRA-reported homeless deaths, stratified by location of death, are presented, separately, in Table 4b, by borough only, as community district is not available for these deaths.

Non-sheltered decedents (DHS, HPD, and OCME)

Hospital deaths accounted for 45% (n=49) of deaths among the non-sheltered (Figure 4, Table 4a). This proportion has increased since reporting began, up from 31% in the first annual report. Non-sheltered individuals also died outdoors (25%, n=27) and in other places (30%; n=32). The proportion of outdoor deaths among non-sheltered individuals has ranged from 47% in the first reporting year to 20% in the 7th Annual Report (FY12) (Figure 4).

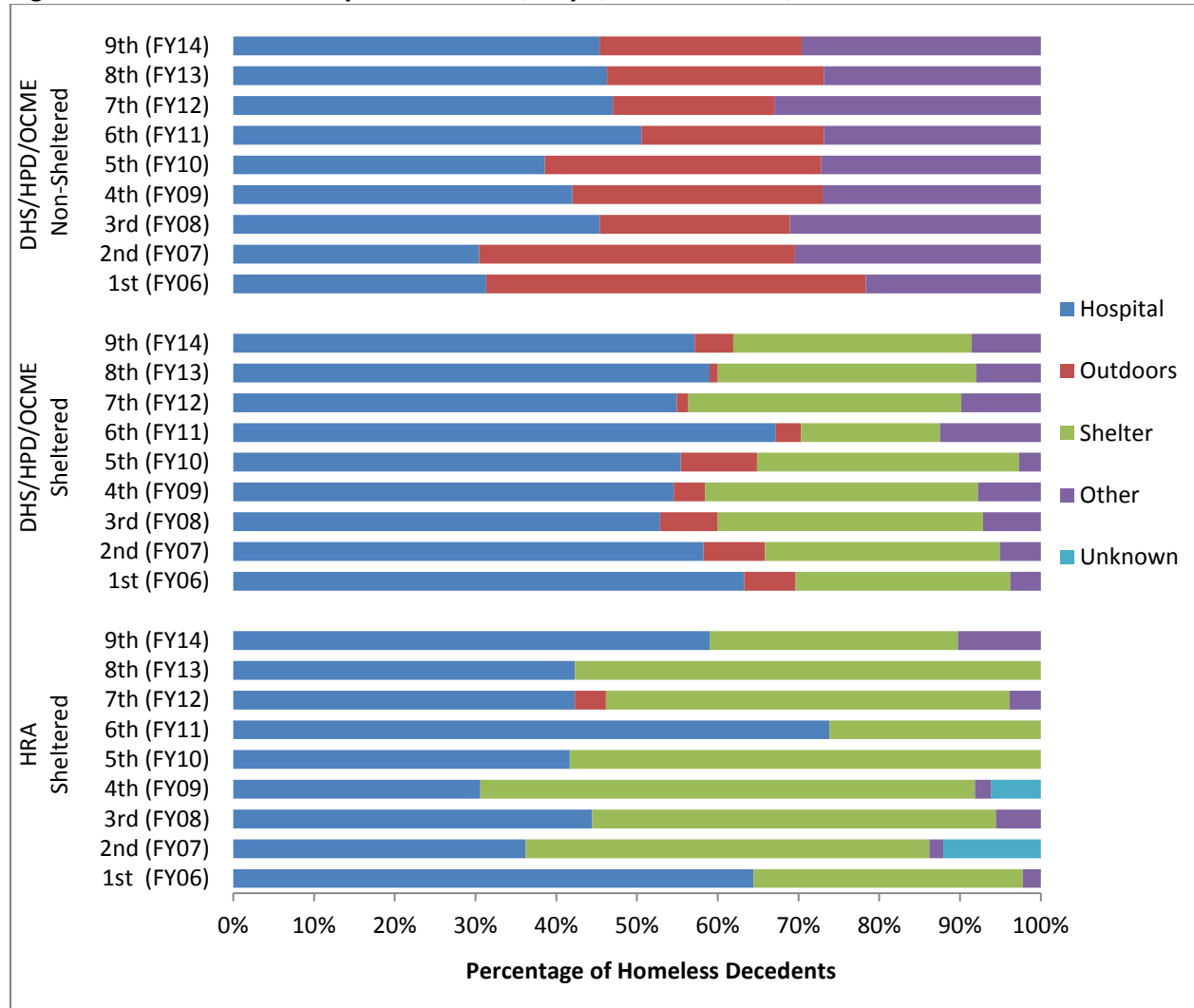
Sheltered decedents (DHS, HPD, and OCME)

Deaths in hospitals accounted for more than half (57%; n=60) of deaths among the sheltered (Figure 4, Table 4a). The next most frequent locations of death were shelter (30%; n=31), other places (9%; n=9), and outdoors (5%; n=5). The sheltered decedents, who died in other places, were found in the apartment of friends or family, on subway tracks or in a subway station, or in a public space or in a building. Location of shelter for sheltered decedents included all five boroughs; Manhattan (33%; n=35), Brooklyn (33%; n=35); the Bronx (21%; n=23), Queens (10%; n=11), and Staten Island (1%; n=1) (Table 3).

Sheltered decedents (HRA)

The 39 HRA reported homeless decedents died in hospitals (62%; n=24), shelters (28%; n=11), and other places (10%, n=4) (Table 4b). The majority of deaths among HRA decedents occurred in Manhattan (59%; n=23), followed by the Bronx (26%; n=10). Five deaths (13%) occurred in Brooklyn. None died in Queens or Staten Island (Table 4b).

Figure 4. Location of Death by Shelter Status, July 1, 2005 – June 30, 2014



AGE AND GENDER

DHS, HPD, and OCME reported deaths

Male decedents accounted for the majority of deaths (78%; n=167). Decedents aged 45 to 64 accounted for nearly 60% of deaths (60%; n=127). The number of deaths in the 45 to 64 years age group has increased since FY11. The proportion of decedents aged > 65 was 8% (n=16) in FY 14. Decedents aged 1 to 24 years accounted for 4% (n=9) of deaths. There were 5 infant deaths (2%). The number of infant deaths has ranged from 1-14 since reporting began.

Males aged 45 to 64 accounted for just over half of decedents (51%; n=109) (Figure 5a, 5b, Table 5). Males aged 45 to 64 and 25 to 44 years have ranked as the first and second largest age-gender classes of homeless decedents since reporting began.

Figure 5a. Male Homeless Decedents by Age Group, New York City, July 5, 2005 - June 30, 2014

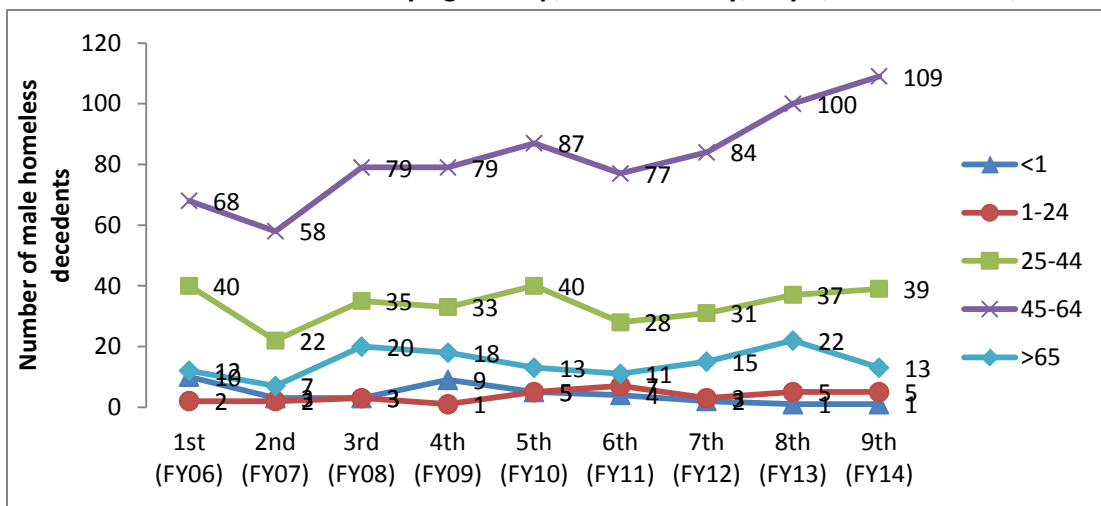
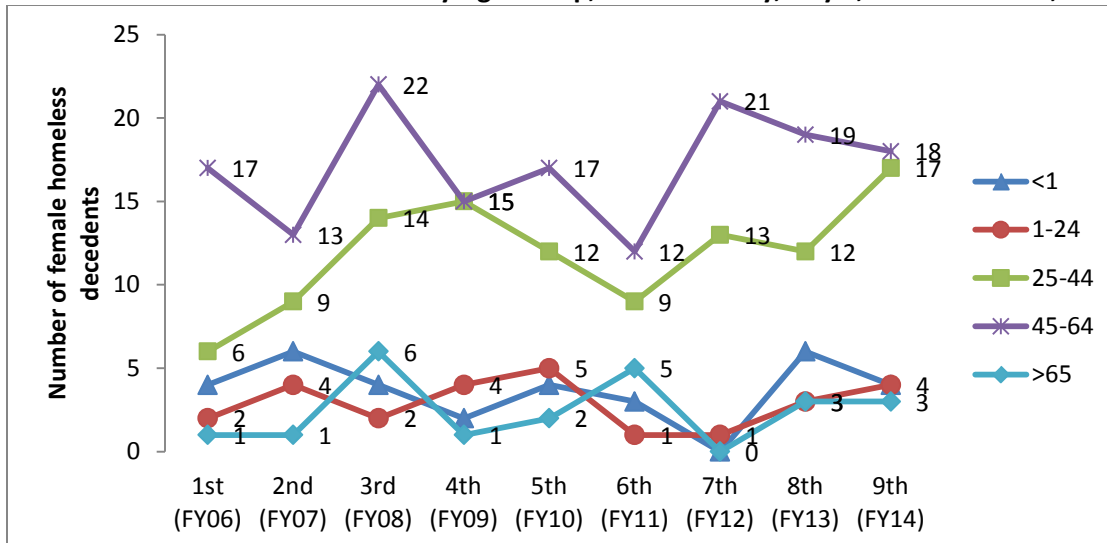


Figure 5b. Female Homeless Decedents by Age Group, New York City, July 1, 2005 – June 30, 2014



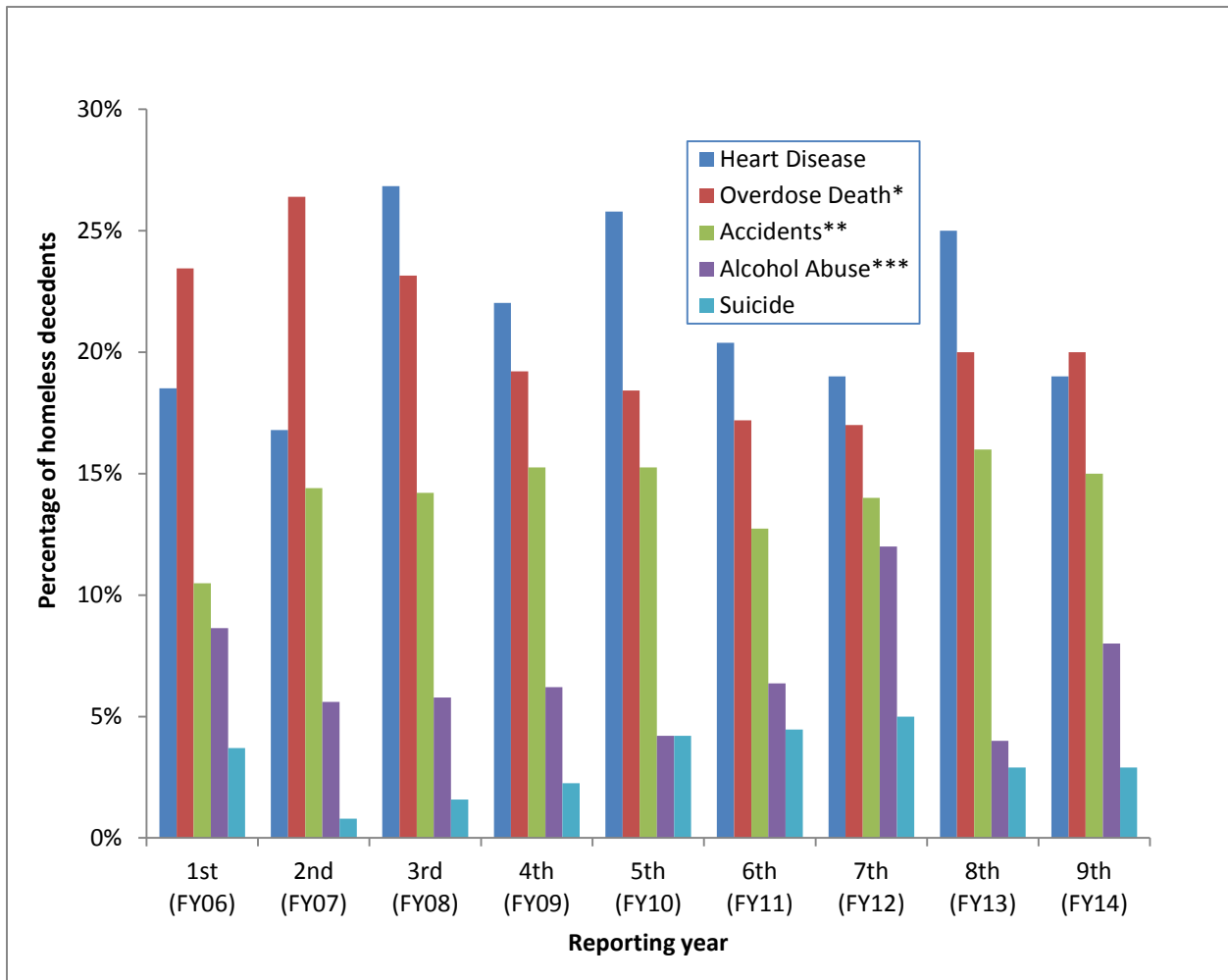
HRA reported deaths

Among the 39 HRA homeless deaths in FY14, 79% (n=31) were male, 18% (n=7) were female and 3% (n=1) were transgender female. The age group 45 to 64 accounted for 54% (n=21) of decedents, those aged 25 to 44, 26% (n=10), and four decedents (10%) were 65 and older (Table 5).

LEADING CAUSE OF DEATH (DHS, HPD, and OCME reported deaths only)

Drug overdose has narrowly become the leading cause of deaths in FY14, accounting for 20% (n=43) (Figure and Table 6a). Heart disease accounted for 19% (n=41), followed by accidents (15%; n=33), alcohol abuse (8%; n=17), and suicide (3%; n=7). Drug overdose includes accidental and intentional overuse, or abuse of, illicit and/or therapeutic drugs. Additionally, drug overdose and alcohol abuse include acute intoxication, harmful use, dependence syndrome, and withdrawal state (Table 6a).

Figure 6a. Leading Cause of Death, July 1, 2005 - June 30, 2014



* Mental and Behavior Disorders Due to the Use of, or Accidental Poisoning by, Psychoactive Substances Excluding Alcohol and Tobacco

** Excluding Accidental Drug Overdose

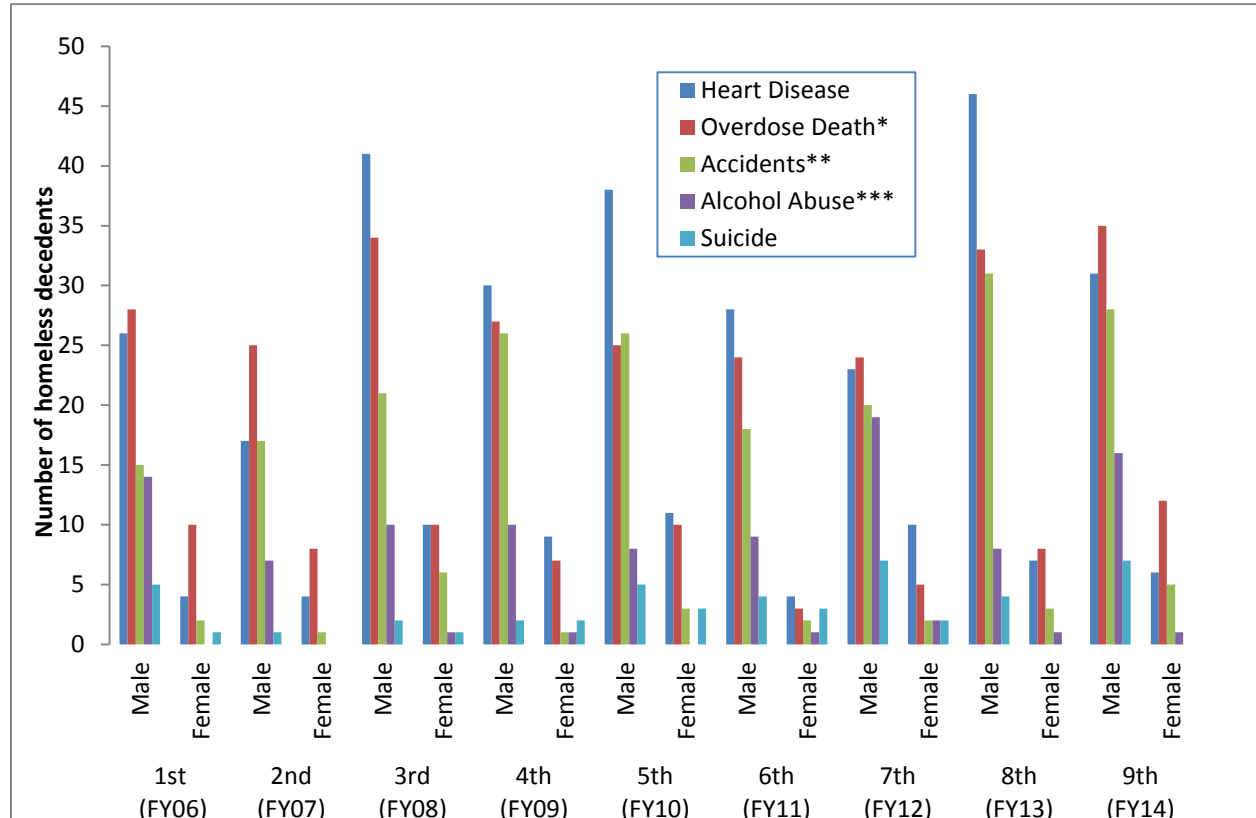
***Mental and Behavioral Disorders due to the Use of Alcohol

†Leading causes of death for each reporting year have been altered to reflect the current reporting year’s five leading causes.

Leading Causes of Death by Sex

During FY14 the leading cause of death among males was heart disease (21%; n=35). Among females drug overdose was the leading cause (26%; n=12). (Figure 6b, Table 6a).

Figure 6b. Leading Cause of Death by Sex, July 1, 2005 – June 30, 2014



* Mental and Behavior Disorders Due to the Use of, or Accidental Poisoning by, Psychoactive Substances Excluding Alcohol and Tobacco

** Excluding Accidental Drug Overdose

***Mental and Behavioral Disorders due to the Use of Alcohol

Leading Causes of Death and Shelter Status

In FY14, the leading cause of death among sheltered decedents was drug overdose (24%; n=25), followed by heart disease (22%; n=23), alcohol abuse (14%; n=15), accidents (9%; n=9). Lastly, chronic liver disease and influenza and pneumonia accounted for 4% (n=4) each.

Among non-sheltered homeless, the leading cause of death was accidents (22%; n=24), followed by heart disease (17%; n=18), drug overdose (17%; n=18), suicide (15%; n=16), alcohol abuse (13%; n=14), and homicide (5%; n=5) (Table 6b).

Leading Causes of Death and Shelter Status by location of death

There were 27 outdoor deaths among the non-sheltered during FY14. These included overdose (30%; n=8), alcohol abuse (19%; n=5), heart disease (11%; n=3), accidents (11%; n=3), suicide (4%; n=1) and cancer (4%; n=1). There were 32 other place (not outdoor or hospital) deaths among the non-sheltered in FY14. Non-sheltered other place deaths were due to accidents (n=11), alcohol abuse (n=6), heart disease (n=4), drug overdose (n=4) and suicide (n=2). There were 5 outdoor deaths among the sheltered in FY14. Sheltered outdoor deaths included one each of accident, suicide, homicide and three in the category “other causes”. There were 9 other place deaths among the sheltered. Sheltered other place deaths included drug overdose (33%; n=3), accidents (33%; n=3), and one each of alcohol abuse, heart disease, and suicide.

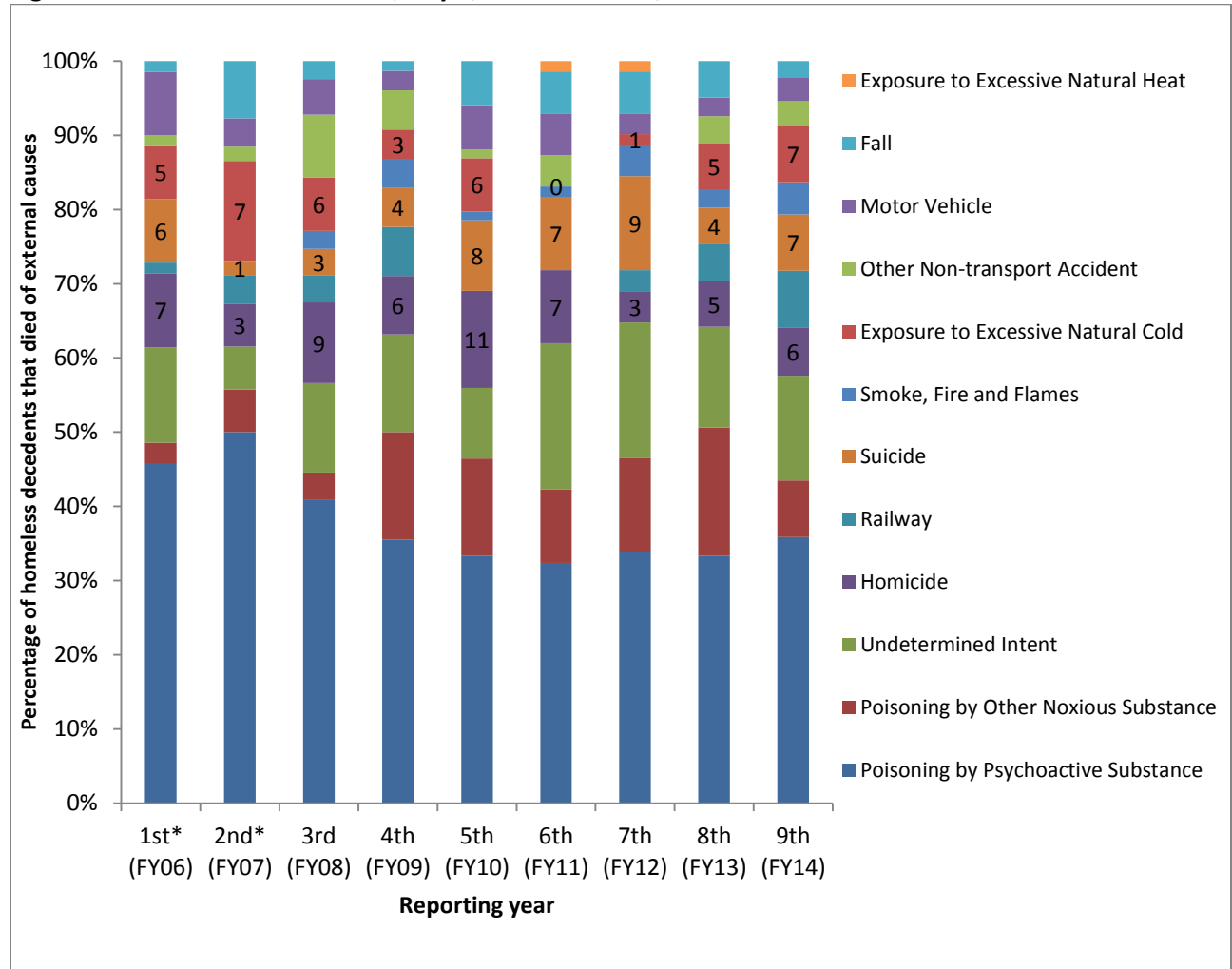
Leading Causes of Death among Homeless Infants

Since reporting began, in 2005, 71 homeless infant deaths were reported. All, but 11, deemed natural deaths, were investigated by OCME. Among the 5 infant deaths in FY14, one was due to congenital malformations or conditions, one due to accidents, and three had an undetermined cause of death.

External Causes of Death among DHS, HPD, and OCME Homeless Persons

External causes of death are those which are not due to natural causes, such as accident, homicide, or suicide. The number of external cause deaths has ranged between 52 and 104 since reporting began. Among the 93 external deaths reported in this annual report, 35% (n=33) were overdose deaths. (Figure 7, Table 6c, 6d). Undetermined intent deaths accounted for 14% (n=13) of external deaths. This was followed by suicide (8%; n=7), railway accidents (8%; n=7), exposure to excessive natural cold (8%; n=7), homicide (6%; n=6) and poisoning by other noxious substance (5%; n=5). Railway accidents include collisions with railways and falls from railways.

Figure 7. External Cause of Death, July 1, 2006 – June 30, 2014



*Prior to 2007, the manner of some overdose deaths were coded as natural rather than external, underestimating those due to external causes. As a result, we have used cause of death codes provided by the National Center for Health Statistics (NCHS) to correct the first and second reporting year data for this change in coding. See Special Section: New York City Changes from Manual to Automated Cause-of-Death Coding: <http://www.nyc.gov/html/doh/downloads/pdf/vs/2007sum.pdf> for more information.

TABLES

Table 1: LL63 Categories for Classifying Deaths

Outdoor Deaths	Other Deaths
Sidewalk/Street	Friend or Family Member's Apartment
Expressway	Subway Car/ Subway Platform/Train Station
Outside of Building Entrance	Abandoned Building
Park Area	Public Space in a Building†
Encampment	Motel/Hotel Room
Vehicle	Drop-in Center
Vacant Lot	Building Vestibule
Bank/Shore of in Body of Water	Place of Employment
Construction Site	Storage Facility
Roof of Building	Other, not otherwise specified

* In the 1st annual report, subway and train deaths were categorized as outdoor; this was changed in the 2nd annual report based on discussions between agencies reporting these deaths

†Public spaces in buildings include lobbies, stairwells, elevators, and roofs.

Table 2: Deaths by Shelter Residency Status and Month of Death, July 1, 2013 – June 30, 2014

Month of Death	Deaths Reported by OCME, DHS, and HPD									Deaths Reported by HRA*		
	Total			Shelter Residency Status						Total	Shelter Residency Status	
				Sheltered			Non-Sheltered				Sheltered	Non-Sheltered
	All	OCME	Non-OCME	All	OCME	Non-OCME	All	OCME	Non-OCME	Total		
All Months	213	187	26	105	82	23	108	105	3	39	39	0
July '13	7	6	1	3	2	1	4	4	0	5	5	0
August '13	12	11	1	6	5	1	6	6	0	3	3	0
September '13	19	17	2	7	5	2	12	12	0	4	4	0
October '13	16	15	1	7	6	1	9	9	0	3	3	0
November '13	21	19	2	12	10	2	9	9	0	5	5	0
December '13	15	13	2	9	7	2	6	6	0	1	1	0
January '14	22	18	4	12	8	4	10	10	0	3	3	0
February '14	15	11	4	7	4	3	8	7	1	5	5	0
March '14	21	21	0	12	12	0	9	9	0	3	3	0
April '14	23	18	5	14	10	4	9	8	1	2	2	0
May '14	19	16	3	8	6	2	11	10	1	1	1	0
June '14	23	22	1	8	7	1	15	15	0	4	4	0

* All HRA deaths occurred to homeless placed in Single Room Occupancy (SRO). SROs are not considered homeless shelters by HRA, but they are included in this report because they are homeless shelter residents according to Local Law No. 63 of 2005 (codified at New York City Administrative Code Section 17-190) definitions #2 Homeless shelter resident and #3 Homeless shelter were classified as homeless sheltered residents. See: <http://webdocs.nycouncil.info/attachments/66681.htm>

HRA homeless sheltered deaths are reported separately and should not be added to other homeless sheltered deaths as there may be duplication. To comply with Article 27-F of the New York state Public Health Law which prohibits disclosure of any information that could reasonably identify someone having an HIV related illness or AIDS, personal identifiers on HRA homeless deaths were not provided; hence corresponding death certificates could not be reviewed to determine whether deaths were also reported by OCME

Table 3: Sheltered Homeless Decedents by Shelter Location, July 1, 2013 – June 30, 2014

Borough	Community District	Deaths of Sheltered Homeless Persons Reported by OCME, DHS, and HPD
All Boroughs		105
Manhattan	Total	35
	Battery Park, Tribeca (01)	0
	Greenwich Village, SOHO (02)	2
	Lower East Side (03)	6
	Chelsea, Clinton (04)	3
	Midtown Business District (05)	0
	Murray Hill (06)	4
	Upper West Side (07)	1
	Upper East Side (08)	1
	Manhattanville (09)	2
	Central Harlem (10)	1
	East Harlem (11)	11
	Washington Heights (12)	4
Bronx	Total	23
	Mott Haven (01)	1
	Hunts Point (02)	5
	Morrisania (03)	2
	Concourse, Highbridge (04)	5
	University/Morris Heights (05)	2
	East Tremont (06)	5
	Fordham (07)	1
	Riverdale (08)	0
	Unionport, Soundview (09)	2
	Throgs Neck (10)	0
	Pelham Parkway (11)	0
	Williamsbridge (12)	0
Brooklyn	Total	35
	Williamsburg, Greenpoint (01)	4
	Fort Greene, Brooklyn Heights (02)	2
	Bedford Stuyvesant (03)	0
	Bushwick (04)	3
	East New York (05)	9
	Park Slope (06)	1
	Sunset Park (07)	0
	Crown Heights North (08)	0
	Crown Heights South (09)	3
	Bay Ridge (10)	0
	Bensonhurst (11)	0
	Borough Park (12)	0
	Coney Island (13)	0
	Flatbush, Midwood (14)	1
	Sheepshead Bay (15)	0
	Brownsville (16)	6
	East Flatbush (17)	3
Canarsie (18)	3	

Table 3 (continued): Sheltered Homeless Decedents by Community District of Shelter, July 1, 2013 – June 30, 2014

Borough	Community District	Deaths of Sheltered Homeless Persons Reported by OCME, DHS, and HPD
Queens	Total	11
	Astoria, Long Island City (01)	0
	Sunnyside, Woodside (02)	3
	Jackson Heights (03)	0
	Elmhurst, Corona (04)	0
	Ridgewood, Glendale (05)	0
	Rego Park, Forest Hills (06)	0
	Flushing (07)	2
	Fresh Meadows, Briarwood (08)	0
	Woodhaven (09)	0
	Howard Beach (10)	1
	Bayside (11)	0
	Jamaica, St. Albans (12)	5
	Queens Village (13)	0
The Rockaways (14)	0	
Staten Island	Total	1
	Port Richmond (01)	1
	Willowbrook, South Beach (02)	0
	Tottenville (03)	0

Table 4a: Homeless Decedents by Location of Death, July 1, 2013 – June 30, 2014

Borough		Community District		Deaths Reported by OCME, DHS, and HPD														
				Total					Shelter Residency Status									
									Sheltered					Non-Sheltered				
				Total	Shelter	Hospital	Outdoors	Other	Location of Death					Location of Death				
Total	Shelter	Hospital	Outdoors						Other	Total	Shelter	Hospital	Outdoors	Other				
All Boroughs																		
Manhattan	Total	90	12	51	14	13	45	12	24	3	6	45	0	27	11	7		
	Battery Park, Tribeca (01)	6	0	4	1	1	2	0	0	1	1	4	0	4	0	0		
	Greenwich Village, SOHO (02)	2	0	0	1	1	0	0	0	0	0	2	0	0	1	1		
	Lower East Side (03)	6	1	0	2	3	3	1	0	0	2	3	0	0	2	1		
	Chelsea, Clinton (04)	12	1	6	1	4	3	1	1	0	1	9	0	5	1	3		
	Midtown Business District (05)	2	0	0	1	1	1	0	0	1	0	1	0	0	0	1		
	Murray Hill (06)	18	2	15	1	0	10	2	8	0	0	8	0	7	1	0		
	Upper West Side (07)	2	1	0	1	0	1	1	0	0	0	1	0	0	1	0		
	Upper East Side (08)	9	1	7	1	1	3	1	1	0	1	6	0	5	1	0		
	Manhattanville (09)	3	0	0	1	2	1	0	0	0	1	2	0	0	1	1		
	Central Harlem (10)	12	1	10	1	0	9	1	8	0	0	3	0	2	1	0		
	East Harlem (11)	7	4	2	1	0	5	4	1	0	0	2	0	1	1	0		
	Washington Heights (12)	8	1	7	0	0	6	1	5	0	0	2	0	2	0	0		
Unknown Community District	3	0	1	2	0	1	0	0	1	0	2	0	1	1	0			
Bronx	Total	42	3	17	7	15	19	3	12	2	2	23	0	5	5	13		
	Mott Haven (01)	9	0	4	2	3	3	0	3	0	0	6	0	1	2	3		
	Hunts Point (02)	2	1	0	0	1	2	1	0	0	1	0	0	0	0	0		
	Morrisania (03)	0	0	0	0	0	0	0	0	0	0	0	0	0	0	0		
	Concourse, Highbridge (04)	7	1	2	1	3	4	1	2	0	1	3	0	0	1	2		
	University/Morris Heights (05)	5	1	0	1	3	2	1	0	1	0	3	0	0	0	3		
	East Tremont (06)	9	0	7	1	1	4	0	4	0	0	5	0	3	1	1		
	Fordham (07)	4	0	3	0	1	2	0	2	0	0	2	0	1	0	1		
	Riverdale (08)	0	0	0	0	0	0	0	0	0	0	0	0	0	0	0		
	Unionport, Soundview (09)	1	0	0	1	0	1	0	0	1	0	0	0	0	0	0		
	Throgs Neck (10)	2	0	0	1	1	0	0	0	0	0	2	0	0	1	1		
	Pelham Parkway (11)	2	0	1	0	1	1	0	1	0	0	1	0	0	0	1		
Williamsbridge (12)	1	0	0	0	1	0	0	0	0	0	1	0	0	0	1			

Table 4a (continued): Homeless Decedents by Location of Death, July 1, 2013 – June 30, 2014

Borough		Community District		Deaths Reported by OCME, DHS, and HPD												
				Total					Shelter Residency Status							
									Sheltered					Non-Sheltered		
									Location of Death					Location of Death		
Total	Shelter	Hospital	Outdoors	Other	Total	Shelter	Hospital	Outdoors	Other	Total	Shelter	Hospital	Outdoors	Other		
Brooklyn	Total	47	11	25	7	4	30	11	19	0	0	17	0	6	7	4
	Williamsburg, Greenpoint (01)	1	1	0	0	0	1	1	0	0	0	0	0	0	0	0
	Fort Greene, Brooklyn Heights (02)	4	0	3	1	0	2	0	2	0	0	2	0	1	1	0
	Bedford Stuyvesant (03)	5	0	4	0	1	3	0	3	0	0	2	0	1	0	1
	Bushwick (04)	2	2	0	0	0	2	2	0	0	0	0	0	0	0	0
	East New York (05)	2	2	0	0	0	2	2	0	0	0	0	0	0	0	0
	Park Slope (06)	2	1	1	0	0	1	1	0	0	0	1	0	1	0	0
	Sunset Park (07)	0	0	0	0	0	0	0	0	0	0	0	0	0	0	0
	Crown Heights North (08)	1	0	0	0	1	0	0	0	0	0	1	0	0	0	1
	Crown Heights South (09)	7	0	6	1	0	4	0	4	0	0	3	0	2	1	0
	Bay Ridge (10)	0	0	0	0	0	0	0	0	0	0	0	0	0	0	0
	Bensonhurst (11)	0	0	0	0	0	0	0	0	0	0	0	0	0	0	0
	Borough Park (12)	1	0	1	0	0	1	0	1	0	0	0	0	0	0	0
	Coney Island (13)	2	0	0	1	1	0	0	0	0	0	2	0	0	1	1
	Flatbush, Midwood (14)	1	0	0	0	1	0	0	0	0	0	1	0	0	0	1
	Sheepshead Bay (15)	2	0	0	2	0	0	0	0	0	0	2	0	0	2	0
	Brownsville (16)	2	2	0	0	0	2	2	0	0	0	0	0	0	0	0
	East Flatbush (17)	13	2	10	1	0	11	2	9	0	0	2	0	1	1	0
	Canarsie (18)	2	1	0	1	0	1	1	0	0	0	1	0	0	1	0
Unknown Community District	0	0	0	0	0	0	0	0	0	0	0	0	0	0	0	
Queens	Total	29	5	13	4	7	10	5	4	0	1	19	0	9	4	6
	Astoria, Long Island City (01)	2	0	1	0	1	1	0	1	0	0	1	0	0	0	1
	Sunnyside, Woodside (02)	2	1	0	1	0	1	1	0	0	0	1	0	0	1	0
	Jackson Heights (03)	2	0	0	1	1	0	0	0	0	2	0	0	1	1	
	Elmhurst, Corona (04)	3	0	2	1	0	0	0	0	0	3	0	2	1	0	
	Ridgewood, Glendale (05)	0	0	0	0	0	0	0	0	0	0	0	0	0	0	
	Rego Park, Forest Hills (06)	0	0	0	0	0	0	0	0	0	0	0	0	0	0	
	Flushing (07)	6	2	4	0	0	2	2	0	0	0	4	0	4	0	0
	Fresh Meadows, Briarwood (08)	4	0	3	0	1	2	0	1	0	1	2	0	2	0	0
	Woodhaven (09)	3	0	3	0	0	2	0	2	0	0	1	0	1	0	0
	Howard Beach (10)	1	0	0	0	1	0	0	0	0	0	1	0	0	0	1
	Bayside (11)	0	0	0	0	0	0	0	0	0	0	0	0	0	0	0
	Jamaica, St. Albans (12)	6	2	0	1	3	2	2	0	0	0	4	0	0	1	3
	Queens Village (13)	0	0	0	0	0	0	0	0	0	0	0	0	0	0	0
The Rockaways (14)	0	0	0	0	0	0	0	0	0	0	0	0	0	0	0	
Staten Island	Total	5	0	3	0	2	1	0	1	0	0	4	0	2	0	2
	Port Richmond (01)	2	0	2	0	0	1	0	1	0	0	1	0	1	0	0
	Willowbrook, South Beach (02)	2	0	1	0	1	0	0	0	0	0	2	0	1	0	1
	Tottenville (03)	0	0	0	0	0	0	0	0	0	0	0	0	0	0	0
	Unknown Community District	1	0	0	0	1	0	0	0	0	0	1	0	0	0	1

Table 4b. HRA Homeless Decedents by Location of Death, July 1, 2013 – June 30, 2014 *

Borough	Deaths Reported by HRA*			
	Sheltered			
	Total	Location of Death		
Shelter		Hospital	Other	
All Boroughs	39	11	24	0
Manhattan	23	7	12	0
Bronx	10	3	7	0
Brooklyn	5	1	4	0
Queens	0	0	0	0
Staten Island	0	0	0	0
Unknown	1	0	1	0

Tables 5: Homeless Decedents by Age, Reporting Agency and Sex, July 1, 2013 – June 30, 2014 *

Age Category	Deaths Reported by OCME, DHS, and HPD			Deaths Reported by HRA*		
	Total	Male	Female	Total	Male	Female
	213	167	46	39	31	8
<1	5	1	4	0	0	0
1-24	9	5	4	0	0	0
25-44	56	39	17	10	7	3
45-64	127	109	18	25	21	4
>=65	16	13	3	4	3	1

* All HRA deaths occurred to homeless placed in Single Room Occupancy (SRO). SROs are not considered homeless shelters by HRA, but they are included in this report because they are homeless shelter residents according to Local Law No. 63 of 2005 (codified at New York City Administrative Code Section 17-190) definitions #2 "Homeless shelter resident" and #3 "Homeless shelter". See: <http://webdocs.nycouncil.info/attachments/66681.htm>

HRA homeless sheltered deaths are reported separately and should not be added to other homeless sheltered deaths as there may be duplication. To comply with Article 27-F of the New York state Public Health Law which prohibits disclosure of any information that could reasonably identify someone having an HIV related illness or AIDS, personal identifiers on HRA homeless deaths were not provided, including community district of death.

**Female includes transgender females

Tables 6a: Leading Cause of Death among homeless decedents by Sex, July 1, 2013 – June 30, 2014

Cause of Death		Sex					
		Total		Male		Female	
		All	%	All	%	All	%
Rank	Total	213	100	167	100	46	100
1	PSYCH. SUBSTANCE USE & ACCIDENTAL DRUG POISONING	43	20	31	19	12	26
2	DISEASES OF HEART	41	19	35	21	6	13
3	ACCIDENTS EXCEPT DRUG POISONING	33	15	28	17	5	11
4	MENTAL DISORDERS DUE TO USE OF ALCOHOL	17	8	16	10	1	2
5	INTENTIONAL SELF-HARM (SUICIDE)	7	3	7	4	0	0
6	CHRONIC LIVER DISEASE AND CIRRHOSIS	6	3	5	3	1	2
6	ASSAULT (HOMICIDE)	6	3	6	4	0	0
8	INFLUENZA AND PNEUMONIA	5	2	4	2	1	2
8	AORTIC ANEURYSM AND DISSECTION	5	2	4	2	1	2
10	CHRONIC LOWER RESPIRATORY DISEASES	4	2	1	1	3	7
10	MALIGNANT NEOPLASMS	4	2	2	1	2	4
12	DIABETES MELLITUS	3	1	1	1	2	4
12	CEREBROVASCULAR DISEASE	3	1	1	1	2	4
14	PREGNANCY, CHILDBIRTH AND THE PUEPERIUM	1	0	0	0	1	2
14	LEGAL INTERVENTION	1	0	1	1	0	0
14	ESSENTIAL HYPERTENSION AND RENAL DISEASES	1	0	1	1	0	0
14	CHOLELITHIASIS AND DISORDERS OF THE GALLBLADDER	1	0	0	0	1	2
14	CONGENITAL MALFORMATIONS, DEFORMATIONS	1	0	0	0	1	2
14	HUMAN IMMUNODEFICIENCY VIRUS DISEASE	1	0	1	1	0	0
14	SEPTICEMIA	1	0	1	1	0	0
-	ALL OTHER CAUSES	29	14	22	13	7	15

Tables 6b: Leading Cause of Death among homeless decedents by Shelter Residency Status, July 1, 2013 – June 30, 2014

Cause of Death		Shelter Residency Status					
		Total		Sheltered		Non-Sheltered	
		All	%	All	%	All	%
Rank	Total	213	100	105	100	108	100
1	PSYCH. SUBSTANCE USE & ACCIDENTAL DRUG POISONING	43	20	25	24	18	17
2	DISEASES OF HEART	41	19	23	22	18	17
3	ACCIDENTS EXCEPT DRUG POISONING	33	15	9	9	24	22
4	MENTAL DISORDERS DUE TO USE OF ALCOHOL	17	8	1	1	16	15
5	INTENTIONAL SELF-HARM (SUICIDE)	7	3	4	4	3	3
6	CHRONIC LIVER DISEASE AND CIRRHOSIS	6	3	1	1	5	5
6	ASSAULT (HOMICIDE)	6	3	4	4	2	2
8	INFLUENZA AND PNEUMONIA	5	2	2	2	3	3
8	AORTIC ANEURYSM AND DISSECTION	5	2	3	3	2	2
10	CHRONIC LOWER RESPIRATORY DISEASES	4	2	3	3	1	1
10	MALIGNANT NEOPLASMS	4	2	2	2	2	2
12	DIABETES MELLITUS	3	1	3	3	0	0
12	CEREBROVASCULAR DISEASE	3	1	3	3	0	0
14	PREGNANCY, CHILDBIRTH AND THE PUEPERIUM	1	0	1	1	0	0
14	LEGAL INTERVENTION	1	0	1	1	0	0
14	ESSENTIAL HYPERTENSION AND RENAL DISEASES	1	0	1	1	0	0
14	CHOLELITHIASIS AND DISORDERS OF THE GALLBLADDER	1	0	1	1	0	0
14	CONGENITAL MALFORMATIONS, DEFORMATIONS	1	0	1	1	0	0
14	HUMAN IMMUNODEFICIENCY VIRUS DISEASE	1	0	1	1	0	0
14	SEPTICEMIA	1	0	1	1	0	0
-	ALL OTHER CAUSES	29	14	15	14	14	13

Tables 6c: External Causes of Death among homeless decedents by Sex, July 1, 2013 – June 30, 2014

Rank	Cause of Death	All	Gender	
			Male	Female
	Total	93	74	19
1	POISONING BY PSYCHOACTIVE SUBSTANCE	33	23	10
2	UNDETERMINED INTENT	13	9	4
3	RAILWAY	7	5	2
3	SUICIDE	7	7	0
3	EXPOSURE TO EXCESSIVE NATURAL COLD	7	7	0
6	HOMICIDE	6	6	0
7	POISONING BY OTHER NOXIOUS SUBSTANCE	5	5	0
8	SMOKE, FIRE AND FLAMES	4	4	0
8	MOTOR VEHICLE	3	2	1
9	OTHER NON-TRANSPORT ACCIDENT	3	2	1
9	FALL	2	2	0
11	OTHER LAND TRANSPORT	1	1	0
11	DROWNING AND SUBMERSION	1	0	1
11	LEGAL INTERVENTION	1	1	0

Tables 6d: External Causes of Death among homeless decedents by Shelter Residency Status, July 1, 2013 – June 30, 2014

Rank	Cause of Death	All	Shelter Residency Status	
			Sheltered	Non-Sheltered
	Total	93	41	52
1	POISONING BY PSYCHOACTIVE SUBSTANCE	33	17	16
2	UNDETERMINED INTENT	13	6	7
3	RAILWAY	7	3	4
3	SUICIDE	7	4	3
3	EXPOSURE TO EXCESSIVE NATURAL COLD	7	1	6
6	HOMICIDE	6	4	2
7	POISONING BY OTHER NOXIOUS SUBSTANCE	5	0	5
8	SMOKE, FIRE AND FLAMES	4	0	4
8	MOTOR VEHICLE	3	2	1
9	OTHER NON-TRANSPORT ACCIDENT	3	2	1
9	FALL	2	0	2
11	OTHER LAND TRANSPORT	1	0	1
11	DROWNING AND SUBMERSION	1	1	0
11	LEGAL INTERVENTION	1	1	0