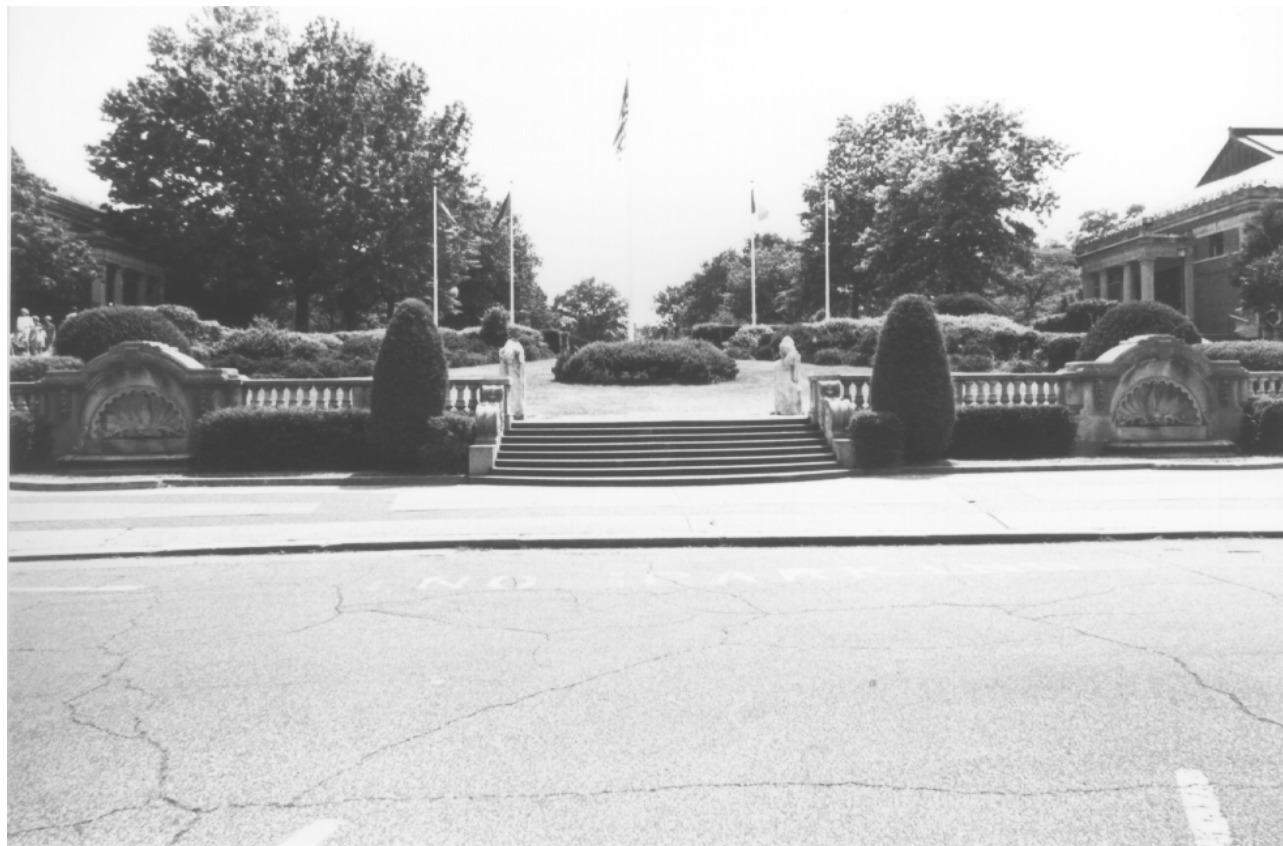




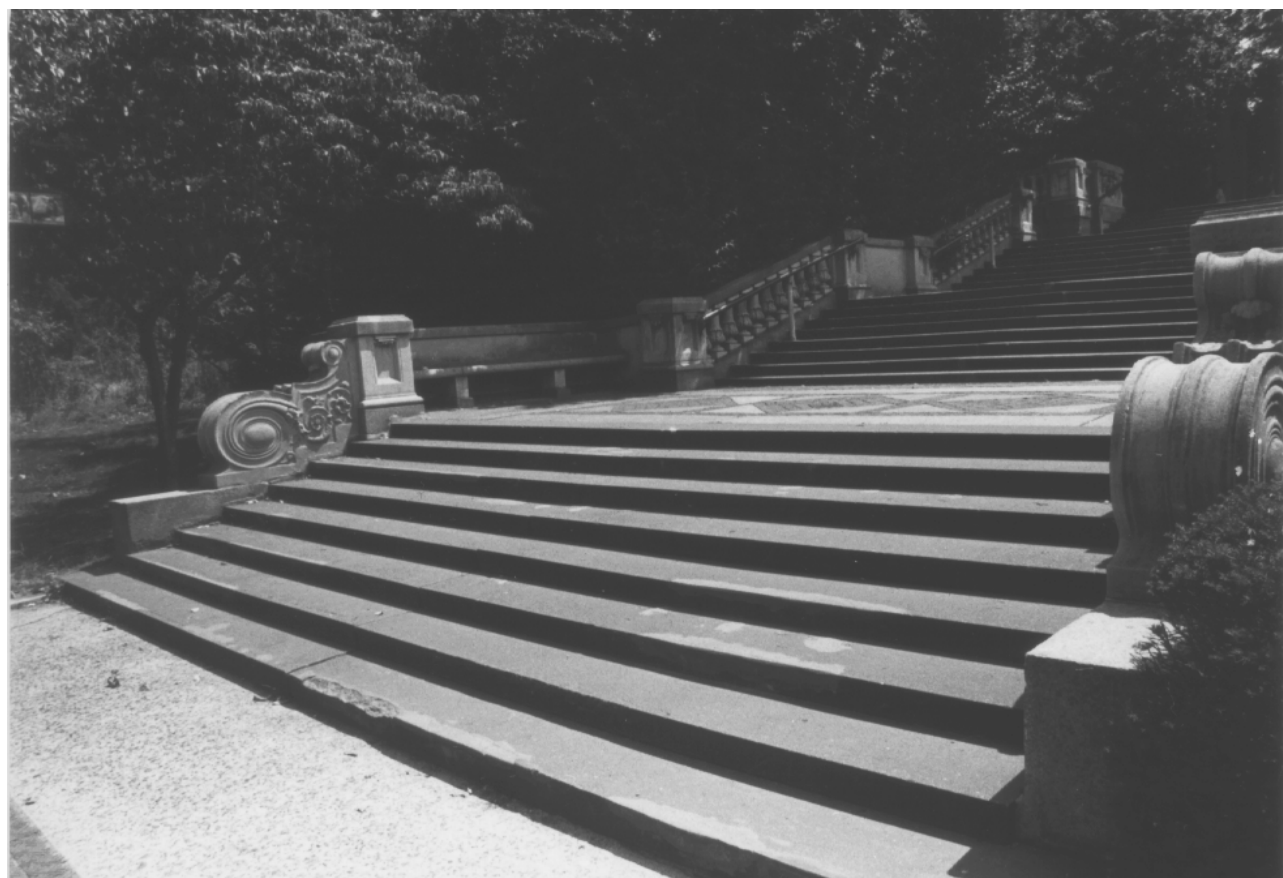
West side of north approach to Elephant Building (now Zoo Center)
 Photo: Carl Forster



Terra cotta balustrade, west side of north approach to Elephant House
 Photo: Carl Forster



North Stairs of Baird (now Astor) Court
Photo: Carl Forster

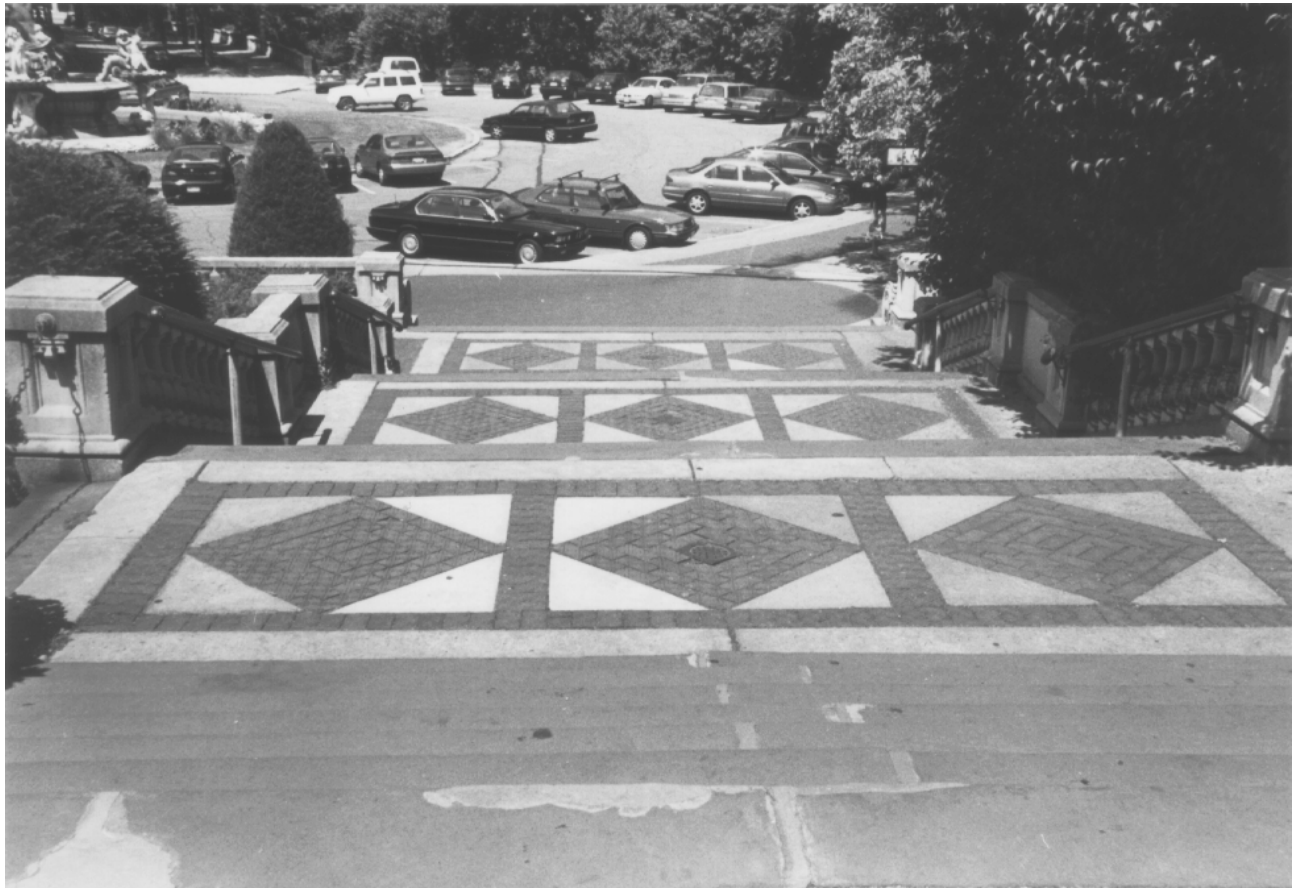


East side of North Stairs
Photo: Carl Forster



East side of North Stairs, facing northwest

Photo: Carl Forster



East side of North Stairs, facing north

Photo: Carl Forster



East side of North Stairs, and northeast retaining wall
 Photo: Carl Forster



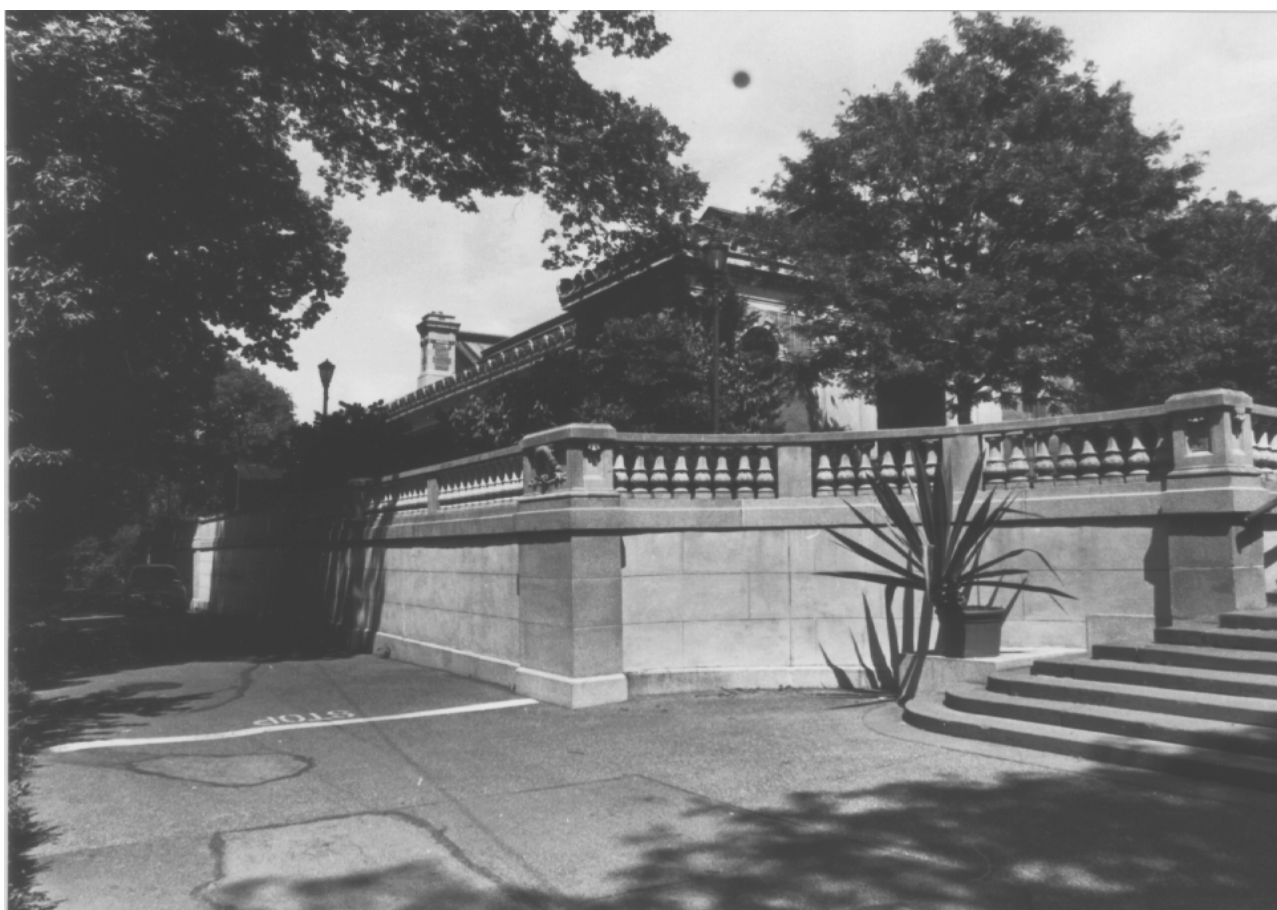
East side of North Stairs facing Administration Building
 Photo: Carl Forster



West Stairs
Photo: Carl Forster



West Stairs, facing south
Photo: Carl Forster



West Stairs, facing north
Photo: Carl Forster

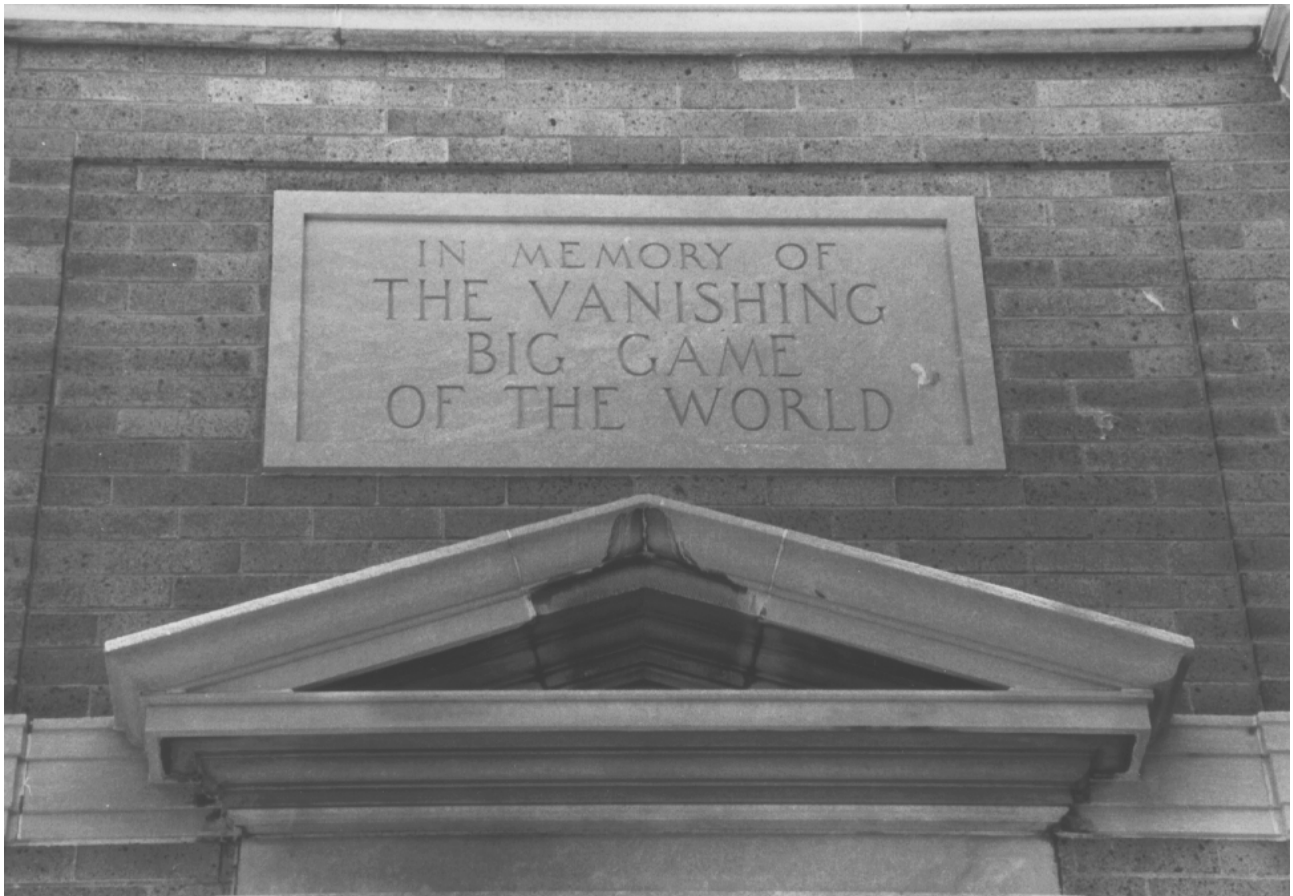


View toward National Collection of Heads & Horns (now Security, Education, & International Conservation Offices)
Photo: Carl Forster



West facade, National Collection of Heads & Horns

Photo: Carl Forster

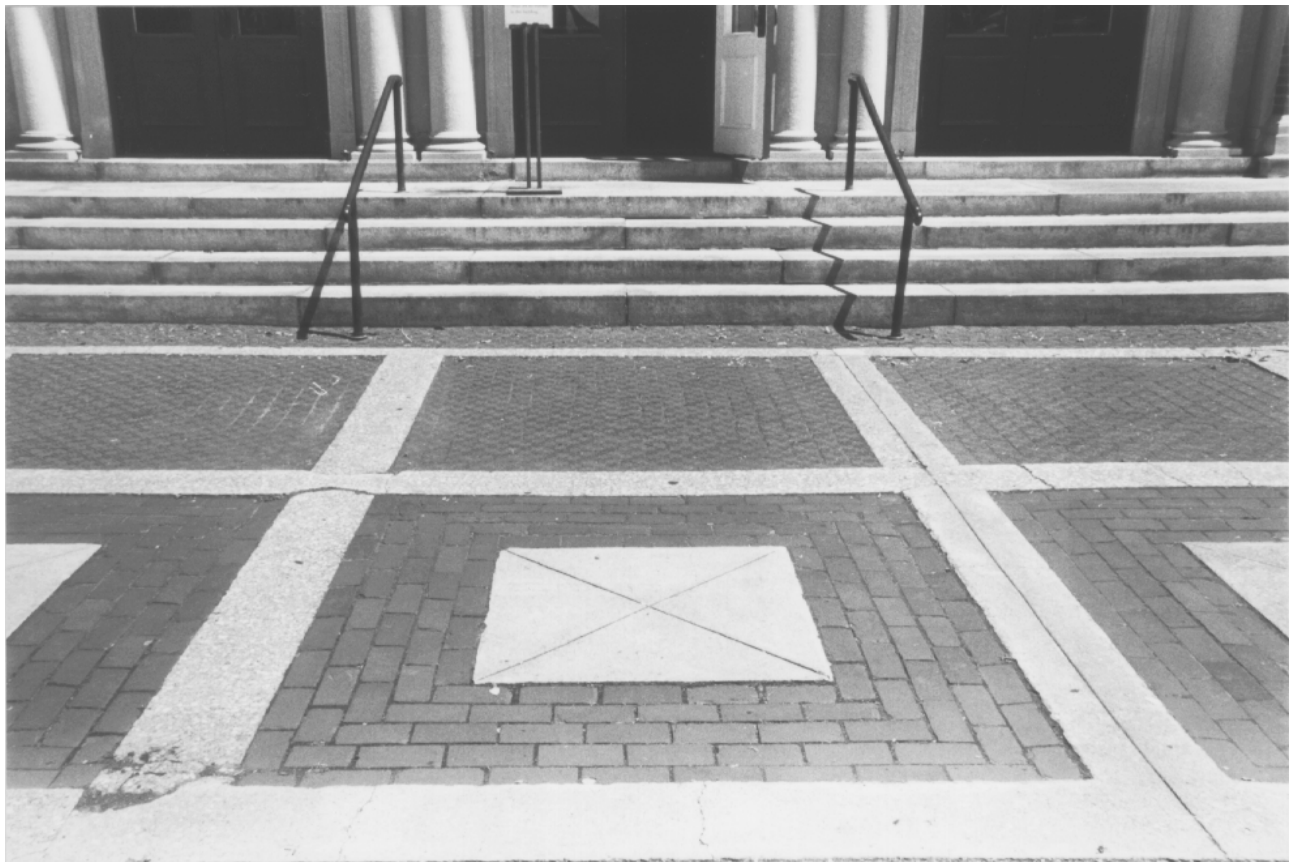


Detail, tablet, west facade of National Collection of Heads and Horns

Photo: Carl Forster



Detail, west facade, National Collection of Heads and Horns
Photo: Carl Forster



Brick paving in front of National Collection of Heads and Horns
Photo: Carl Forster



Northwest corner, National Collection of Heads and Horns

Photo: Carl Forster

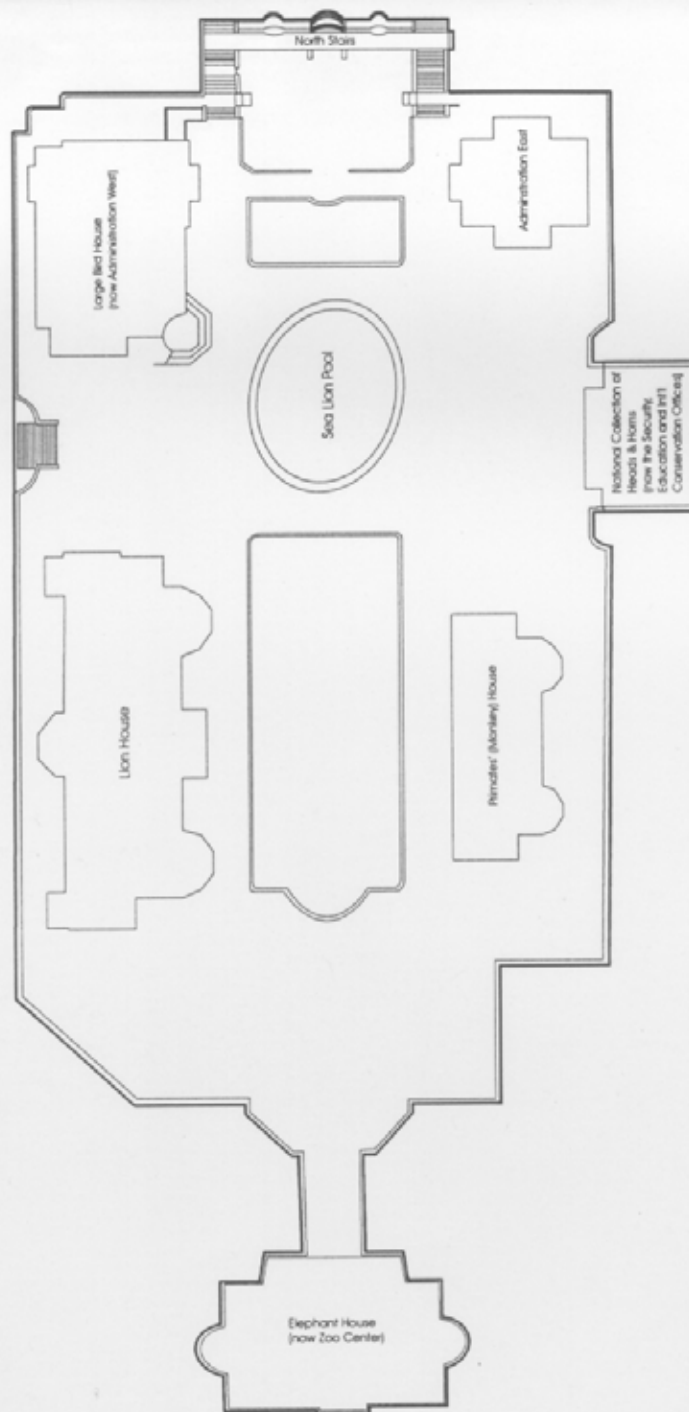


Southwest corner, National Collection of Heads and Horns

Photo: Carl Forster



North facade, National Collection of Heads and Horns
Photo: Carl Forster



Baird (now Astor) Court, New York Zoological Park (Bronx Zoo)
Individual Landmark
LP-1888

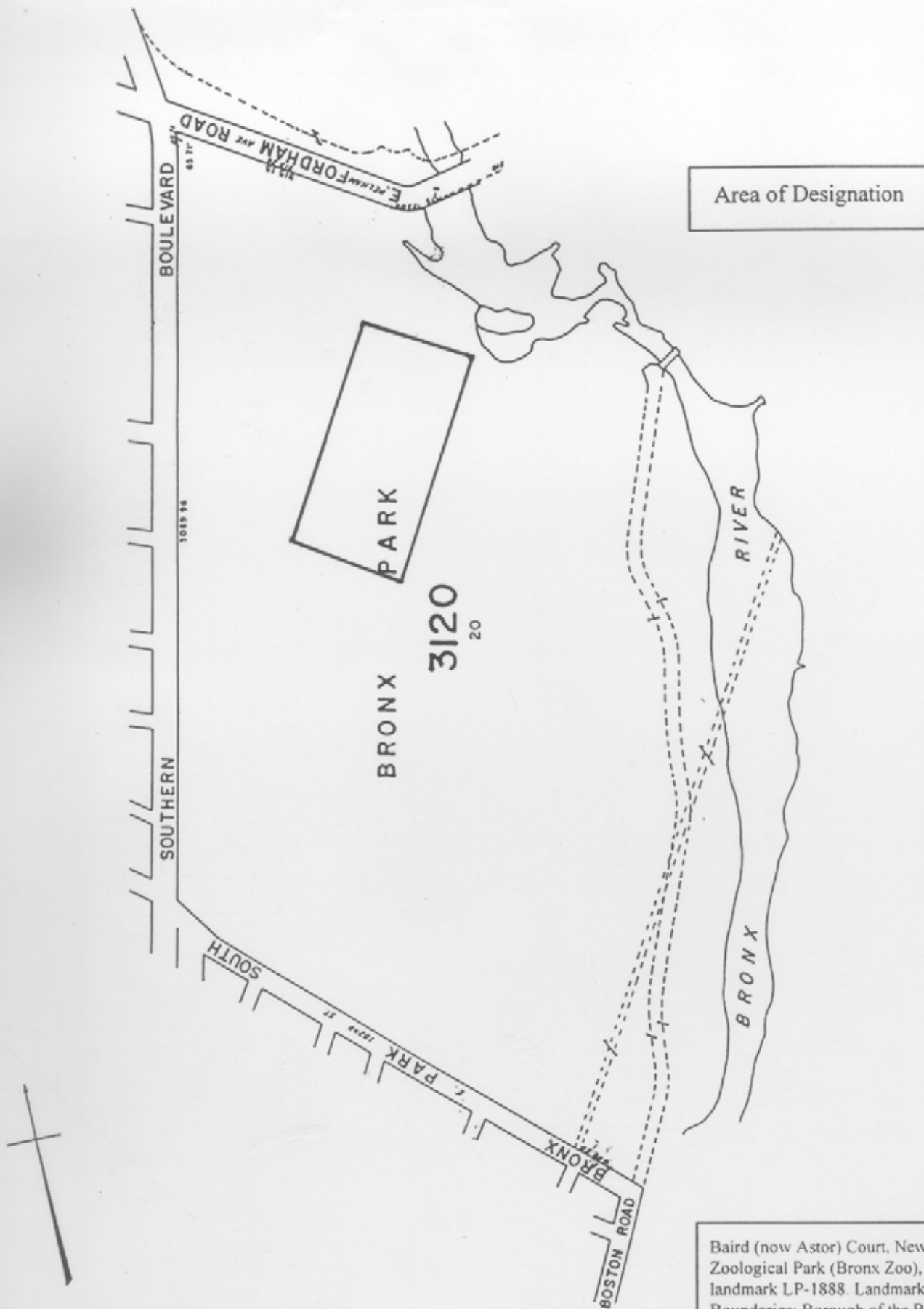
Landmark Site/Boundaries: Borough of the Bronx Tax Map Block 3120, Lot 20, in part.
 For complete description, see page one of designation report.

Designated June 20, 2000
 Landmarks Preservation Commission

— Site Boundaries

Map for Illustrative Purposes Only





Baird (now Astor) Court, New York
Zoological Park (Bronx Zoo), individual
landmark LP-1888. Landmark Site/
Boundaries: Borough of the Bronx Tax Map
Block 3120. Lot 20, in part. For complete
description, please see map in designation
report. Source: New York City Department
of Finance, City Surveyor, Tax Map.